

# TECHNICAL SUPPORT MANUAL

## Split System Heat Pump

### (C,H,T)4H(5,7) Two-Stage

#### Safety Labeling and Signal Words

##### DANGER, WARNING, CAUTION, and NOTE

The signal words **DANGER**, **WARNING**, **CAUTION**, and **NOTE** are used to identify levels of hazard seriousness. The signal word **DANGER** is only used on product labels to signify an immediate hazard. The signal words **WARNING**, **CAUTION**, and **NOTE** will be used on product labels and throughout this manual and other manuals that may apply to the product.

**DANGER** - Immediate hazards which **will** result in severe personal injury or death.

**WARNING** - Hazards or unsafe practices which **could** result in severe personal injury or death.

**CAUTION** - Hazards or unsafe practices which **may** result in minor personal injury or product or property damage.

**NOTE** - Used to highlight suggestions which **will** result in enhanced installation, reliability, or operation.

##### Signal Words in Manuals

The signal word **WARNING** is used throughout this manual in the following manner:



The signal word **CAUTION** is used throughout this manual in the following manner:



##### Signal Words on Product Labeling

Signal words are used in combination with colors and/or pictures on product labels.

#### TABLE OF CONTENTS

Wiring Diagrams .....	2 - 3
Charging Chart .....	4
Tech Labels (Expanded Data) .....	5 - 13
Cooling Multiplying Factors .....	14 - 18
Heating Multiplying Factors .....	19 - 23
Exploded Drawings .....	24 - 26
C4H(5,7) Parts List .....	27 - 29
H4H(5,7) Parts List .....	30 - 32
T4H(5,7) Parts List .....	33 - 35
Model Number Identification .....	36

WARNING

**PERSONAL INJURY, AND/OR PROPERTY DAMAGE HAZARD**

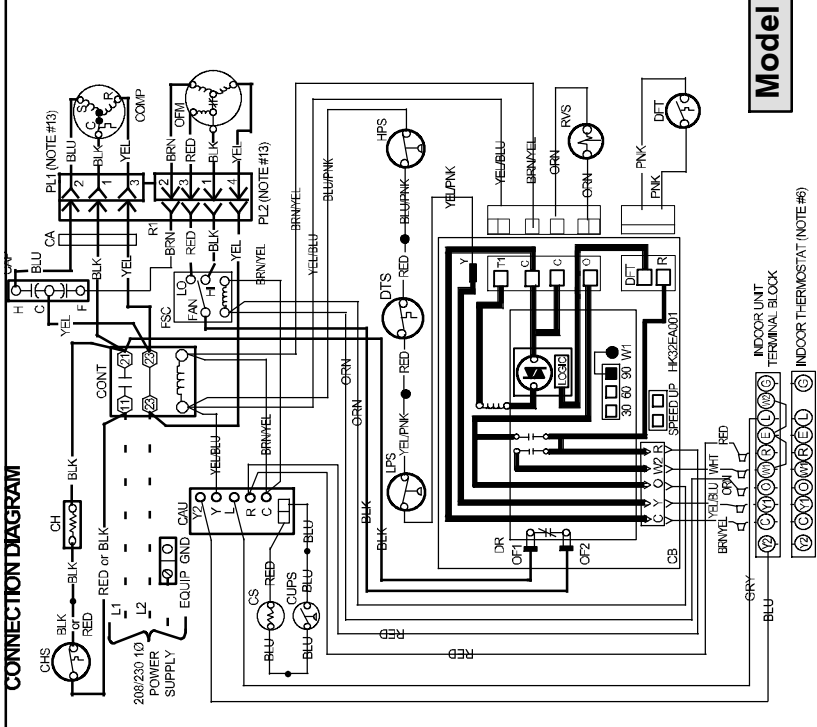
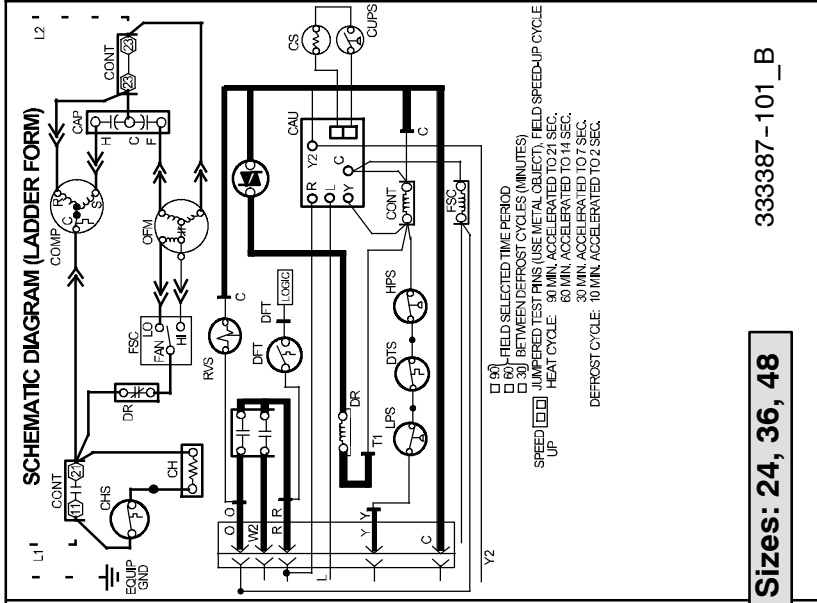
**Failure to carefully read and follow this warning could result in equipment malfunction, property damage, personal injury and/or death.**

**Installation or repairs made by unqualified persons could result in equipment malfunction, property damage, personal injury and/or death.**

**The information contained in this manual is intended for use by a qualified service technician familiar with safety procedures and equipped with the proper tools and test instruments.**

**Installation must conform with local building codes and with the National Electrical Code NFPA70 current edition or Canadian Electrical Code Part 1 CSA C.22.1.**

- LEGEND-**
- FACTORY POWER WIRING
  - FACTORY CONTROL WIRING
  - - - FIELD CONTROL WIRING
  - - - FIELD POWER WIRING
  - CONDUCTOR ON CIRCUIT BOARD
  - COMPONENT CONNECTION
  - FIELD SPICE
  - ⊕ JUNCTION
  - ⊕ PLUG RECEPTACLE
  - ⊕ COMFORT ALERT
  - ⊕ CAPACITOR (DUAL RUN)
  - ⊕ CIRCUIT BOARD
  - \*CH CRANKCASE HEATER
  - \*CHS CRANKCASE HEATER SWITCH
  - CS COMPRESSOR SOLENOID
  - CAU COMFORT ALERT ULTRATECH
  - CUPS COMPRESSOR UNLOADER
  - COMP COMPRESSOR
  - CONT CONTACTOR
  - DFT DEFROST THERMOSTAT
  - DR DEFROST RELAY AND CIRCUITRY
  - \*DTS DISCHARGE TEMP SWITCH
  - FSC FAN SPEED CONTROL
  - \*HPS HIGH PRESSURE SWITCH
  - \*LLS LIQ LINE SOLENOID VALVE
  - \*LPS LOW PRESSURE SWITCH
  - OFM OUTDOOR FAN MOTOR
  - PL1 COMPRESSOR PLUG
  - PL2 OUTDOOR FAN PLUG
  - R1 RECEPTACLE
  - RVS REVERSING VALVE SOLENOID
  - \*SC START CAPACITOR
  - \*SR START RELAY
  - \*ST START THERMISTOR
- \* MAY BE FACTORY INSTALLED

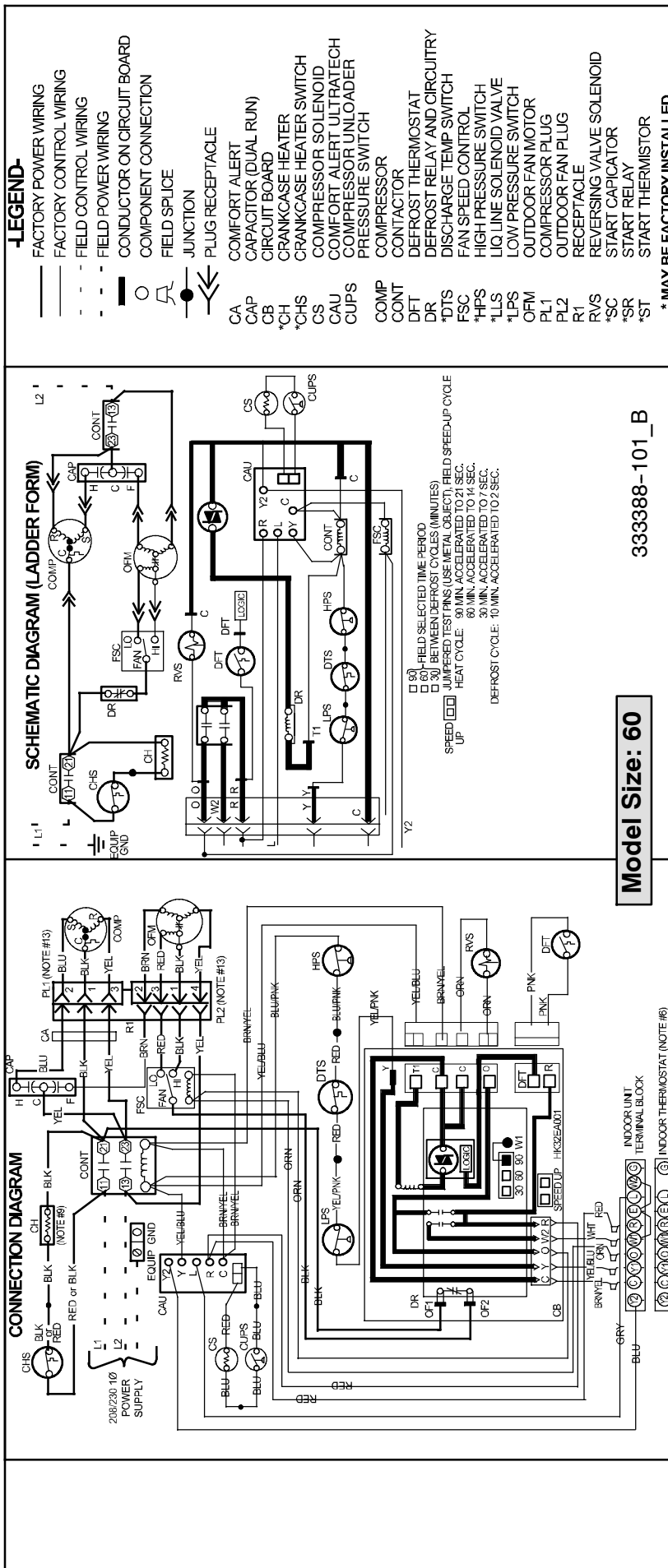


**Model Sizes: 24, 36, 48**

**333387-101\_B**

**NOTES:**

1. Symbols are electrical representation only.
2. Compressor and fan motor furnished with inherent thermal protection.
3. To be wired in accordance with National Electric N.E.C. and local codes.
4. N.E.C. class 2, 24 V circuit, min. 40 VA required. 60 VA on units installed with LLS.
5. Use copper conductors only. Use conductors suitable for at least 75°C (167°F).
6. Must use thermostat and sub-base as stated in pre-sale literature.
7. If indoor section has a transformer with a grounded secondary, connect the grounded side to the BRN/YEL lead.
8. When start relay and start capacitor are installed, start thermistor is not used.
9. If any of the original wire, as supplied, must be replaced, use the same or equivalent wire.
10. Check all electrical connections inside control box for tightness.
11. Do not attempt to operate unit until service valves have been opened.
12. Do not rapid cycle compressor. Compressor must be off 3 minutes to allow pressures to equalize between high and low side before starting.
13. Not for interrupting current.



Model Size: 60

333388-101\_B

**NOTES:**

1. Symbols are electrical representation only.
2. Compressor and fan motor furnished with inherent thermal protection.
3. To be wired in accordance with National Electric N.E.C. and local codes.
4. N.E.C. class 2, 24 V circuit, min. 40 VA required, 60 VA on units installed with LLS.
5. Use copper conductors only. Use conductors suitable for at least 75°C (167°F).
6. Must use thermostat and sub-base as stated in pre-sale literature.
7. If indoor section has a transformer with a grounded secondary, connect the grounded side to the BRN/YEL lead.
8. When start relay and start capacitor are installed, start thermistor is not used.
9. If any of the original wire, as supplied, must be replaced, use the same or equivalent wire.
10. Check all electrical connections inside control box for tightness.
11. Do not attempt to operate unit until service valves have been opened.
12. Do not rapid cycle compressor. Compressor must be off 3 minutes to allow pressures to equalize between high and low side before starting.
13. Not for interrupting current.

<b>R-410A CHARGING CHART</b>												
Measured Liquid Pressure (psig)	Rating Plate (required) Subcooling Temperature °F (°C)											
	°F	(°C)	°F	(°C)	°F	(°C)	°F	(°C)	F	(°C)	F	(°C)
	6	3	8	4	10	6	12	7	14	8	16	9
R-410A Required Liquid Line Temperature °F (°C)												
251	78	26	76	24	74	23	72	22	70	21	68	20
259	80	27	78	26	76	24	74	23	72	22	70	21
266	82	28	80	27	78	26	76	24	74	23	72	22
274	84	29	82	28	80	27	78	26	76	24	74	23
283	86	30	84	29	82	28	80	27	78	26	76	24
291	88	31	86	30	84	29	82	28	80	27	78	26
299	90	32	88	31	86	30	84	29	82	28	80	27
308	92	33	90	32	88	31	86	30	84	29	82	28
317	94	34	92	33	90	32	88	31	86	30	84	29
326	96	36	94	34	92	33	90	32	88	31	86	30
335	98	37	96	36	94	34	92	33	90	32	88	31
345	100	38	98	37	96	36	94	34	92	33	90	32
364	104	40	102	39	100	38	98	37	96	36	94	34
374	106	41	104	40	102	39	100	38	98	37	96	36
384	108	42	106	41	104	40	102	39	100	38	98	37
395	110	43	108	42	106	41	104	40	102	39	100	38
406	112	44	110	43	108	42	106	41	104	40	102	39
416	114	46	112	44	110	43	108	42	106	41	104	40
427	116	47	114	46	112	44	110	43	108	42	106	41
439	118	48	116	47	114	46	112	44	110	43	108	42
450	120	49	118	48	116	47	114	46	112	44	110	43
462	122	50	120	49	118	48	116	47	114	46	112	44
474	124	51	122	50	120	49	118	48	116	47	114	46

## MULTIPLYING FACTORS

### (Refer to pages 6-13)

- † Total capacities are net (I.D. blower heat subtracted) system capacities based on 25 foot (7.62m) line set. If additional tubing length and/or indoor unit is located above outdoor unit, a slight variation in capacity may occur.
- †† At TVA rating indoor condition (75° F db, 63° F wb), all other indoor air temperatures are at 80° F db. If additional tubing length and/or indoor unit is located above outdoor unit, a slight variation in capacity may occur.
- \* System amps are total of indoor and outdoor amps.
- ‡ Chart data is for 80° F indoor dry bulb. For indoor db temperatures other than 80° F, measure Indoor db and Indoor CFM, and plug these into the formula below. Measure outdoor db and indoor wet bulb, apply these to the chart above, find MBh and S/T, and plug these into the formula below. (Note: if indoor db is the only thing changing, total capacity, MBh, stays the same.)

$$\text{Sensible Capacity at Indoor db LOWER than } 80^{\circ}\text{ F} = (\text{MBh} \times \text{S/T}) - \left( \frac{(\text{80} - \text{Indoor db}) \times 835 \times \text{Indoor CFM}}{1000} \right)$$

$$\text{Sensible Capacity at Indoor db HIGHER than } 80^{\circ}\text{ F} = (\text{MBh} \times \text{S/T}) + \left( \frac{(\text{Indoor db} - 80) \times 835 \times \text{Indoor CFM}}{1000} \right)$$

COOLING		24 Size Outdoor With FVM4X36*** Indoor Cooling - Low Stage																				
		Outdoor Ambient Temperature - Degrees F, Dry Bulb																				
		85					95					105					115					
CFM	72	67	63††	62	57	72	67	63††	62	57	72	67	63††	62	57	72	67	63††	62	57		
480	MBH†	20.73	18.55	17.00	16.60	15.82	19.97	17.85	16.34	15.95	15.22	14.85	18.16	16.16	14.75	14.41	14.25	17.06	15.14	13.78	13.55	
	S/††	0.49	0.66	0.69	0.87	1.00	0.50	0.67	0.70	0.88	1.00	0.50	0.68	0.71	0.90	1.00	0.51	0.71	0.75	1.00	1.00	
	AMPS*	4.72	4.65	4.60	4.59	4.57	5.36	5.30	5.25	5.24	5.23	6.08	6.02	5.98	5.97	5.96	6.92	6.86	6.82	6.81	6.81	
	HI PR	253	250	248	247	246	294	291	288	287	286	339	335	333	332	331	390	385	382	382	381	446
	LO PR	156	144	134	132	127	158	146	137	134	131	161	148	139	137	134	164	151	141	140	138	167
560	MBH†	21.46	19.20	17.60	17.21	16.80	20.64	18.45	16.99	16.52	16.30	19.73	17.60	16.09	15.78	15.73	18.70	16.65	15.20	15.08	15.08	
	S/††	0.51	0.69	0.72	0.91	1.00	0.51	0.70	0.73	0.93	1.00	0.52	0.72	0.75	0.99	1.00	0.52	0.73	0.77	1.00	1.00	
	AMPS*	4.77	4.70	4.65	4.64	4.63	5.41	5.34	5.30	5.29	5.28	6.12	6.07	6.02	6.01	6.01	6.96	6.91	6.86	6.86	6.86	
	HI PR	254	251	249	248	248	295	292	289	288	288	340	336	334	333	333	391	387	383	383	383	443
	LO PR	160	148	138	136	134	163	150	140	138	137	165	152	142	141	140	168	155	145	144	144	170
640	MBH†	22.01	19.70	18.07	17.73	17.63	21.15	18.91	17.32	17.09	17.09	20.19	18.02	16.48	16.49	16.49	19.12	17.02	15.54	15.79	15.79	
	S/††	0.52	0.72	0.75	0.95	1.00	0.53	0.74	0.77	1.00	1.00	0.53	0.75	0.78	1.00	1.00	0.54	0.77	0.80	1.00	1.00	
	AMPS*	4.82	4.74	4.69	4.68	4.68	5.45	5.38	5.34	5.33	5.33	6.16	6.10	6.06	6.06	6.06	7.00	6.94	6.90	6.91	6.91	
	HI PR	255	252	250	249	249	296	292	290	289	289	341	337	334	335	335	392	387	384	385	385	
	LO PR	164	151	141	139	139	166	153	143	142	142	168	155	145	146	146	170	157	147	149	149	
720	MBH†	22.45	20.10	18.44	18.35	18.36	21.56	19.27	17.66	17.78	17.78	20.56	18.35	16.79	17.13	17.13	19.45	17.32	15.82	16.39	16.39	
	S/††	0.54	0.75	0.79	1.00	1.00	0.54	0.77	0.80	1.00	1.00	0.55	0.79	0.82	1.00	1.00	0.56	0.81	0.84	1.00	1.00	
	AMPS*	4.86	4.79	4.73	4.73	4.73	5.49	5.42	5.38	5.38	5.38	6.20	6.14	6.10	6.11	6.11	7.04	6.98	6.94	6.95	6.95	
	HI PR	256	253	250	250	250	297	293	290	291	291	342	338	336	336	336	392	388	385	386	386	
	LO PR	166	153	144	143	143	168	155	145	146	146	170	157	147	150	150	173	160	149	154	154	

COOLING		24 Size Outdoor With FVM4X36*** Indoor Cooling - High Stage																			
		Outdoor Ambient Temperature - Degrees F, Dry Bulb																			
		85					95					105					115				
CFM	72	67	63††	62	57	72	67	63††	62	57	72	67	63††	62	57	72	67	63††	62	57	
600	MBH†	27.30	24.74	22.91	22.44	21.25	26.28	23.80	22.03	21.57	20.63	25.16	22.77	21.06	20.63	19.93	23.94	21.64	20.00	19.59	19.15
	S/††	0.50	0.67	0.70	0.87	1.00	0.51	0.68	0.71	0.89	1.00	0.52	0.70	0.73	0.91	1.00	0.52	0.71	0.74	0.94	1.00
	AMPS*	6.36	6.28	6.21	6.20	6.16	7.24	7.15	7.08	7.07	7.03	8.22	8.12	8.05	8.03	8.00	9.35	9.24	9.16	9.14	9.12
	HI PR	264	260	258	257	255	306	302	299	298	297	352	348	345	344	343	404	400	397	396	395
	LO PR	152	139	130	128	122	154	142	132	130	125	157	144	134	132	128	160	147	137	135	132
700	MBH†	28.14	25.50	23.63	23.16	22.43	27.04	24.49	22.68	22.24	21.74	25.86	23.40	21.65	21.25	20.98	24.57	22.20	20.53	20.19	20.13
	S/††	0.52	0.70	0.73	0.91	1.00	0.52	0.71	0.74	0.93	1.00	0.53	0.73	0.76	0.96	1.00	0.54	0.75	0.78	0.99	1.00
	AMPS*	6.44	6.35	6.28	6.27	6.24	7.32	7.22	7.15	7.14	7.12	8.30	8.20	8.12	8.11	8.09	9.42	9.31	9.23	9.22	9.21
	HI PR	265	261	259	258	257	307	303	300	299	299	354	349	346	345	345	406	401	398	397	397
	LO PR	156	144	134	132	128	159	146	136	134	131	161	148	138	136	135	164	150	140	139	138
800	MBH†	28.78	26.09	24.18	23.74	23.42	27.63	25.03	23.18	22.81	22.68	26.39	23.88	22.11	21.86	21.86	25.04	22.63	20.93	20.96	20.96
	S/††	0.53	0.73	0.76	0.95	1.00	0.54	0.75	0.77	0.98	1.00	0.55	0.77	0.79	1.00	1.00	0.56	0.79	0.82	1.00	1.00
	AMPS*	6.51	6.41	6.34	6.33	6.32	7.38	7.29	7.21	7.20	7.20	8.37	8.26	8.19	8.18	8.18	9.49	9.38	9.30	9.30	9.30
	HI PR	266	262	260	259	259	308	304	301	300	300	355	350	347	347	347	407	402	399	399	399
	LO PR	160	147	137	135	133	162	149	139	137	137	164	151	141	140	140	167	153	143	144	144
900	MBH†	29.28	26.55	24.61	24.27	24.26	28.09	25.44	23.57	23.47	23.48	26.80	24.25	22.46	22.61	22.61	25.41	22.97	21.25	21.66	21.66
	S/††	0.55	0.76	0.79	1.00	1.00	0.56	0.78	0.81	1.00	1.00	0.57	0.80	0.83	1.00	1.00	0.58	0.83	0.86	1.00	1.00
	AMPS*	6.57	6.47	6.40	6.39	6.39	7.45	7.35	7.27	7.27	7.27	8.43	8.32	8.25	8.26	8.26	9.56	9.44	9.36	9.38	9.38
	HI PR	267	263	260	260	260	309	305	302	302	302	355	351	348	348	348	408	403	399	400	400
	LO PR	162	149	139	138	138	165	151	141	141	141	167	153	143	145	145	169	156	145	148	148

HEATING		24 Size Outdoor With FVM4X36*** Indoor Heating - Low Stage																				
		Outdoor Ambient Temperature - Degrees F, Dry Bulb										Entering Indoor Temperature - Degrees F, Dry Bulb										
		7	17	27	37	47	57	67	75	75	75	65	70	75	65	70	75	65	70	75	65	70
480	CFM	65	70	75	65	70	75	65	70	75	65	70	75	65	70	75	65	70	75	65	70	75
	MBHt	6.17	5.93	5.75	8.49	8.27	7.99	11.30	10.96	10.62	14.41	14.07	13.68	17.85	17.45	17.04	21.80	21.35	20.90	26.33	25.82	25.32
	T/R	13.90	13.50	13.20	19.30	19.00	18.50	26.00	25.40	24.80	33.50	33.00	32.30	42.10	41.50	40.80	52.30	51.60	50.90	64.40	63.60	62.80
	AMPS*	5.33	5.69	6.13	5.53	5.97	6.36	5.89	6.24	6.62	6.26	6.65	7.04	6.67	7.07	7.50	7.14	7.55	7.98	7.76	8.16	8.59
	HI PR	234	251	269	256	273	292	285	303	322	321	341	361	364	385	407	415	437	459	479	501	523
LO PR	55	55	55	69	70	70	85	86	86	103	104	104	123	124	124	145	146	146	169	170	171	
560	CFM	65	70	75	65	70	75	65	70	75	65	70	75	65	70	75	65	70	75	65	70	75
	MBHt	6.28	6.04	5.86	8.66	8.35	8.14	11.53	11.20	10.86	14.68	14.36	13.97	18.19	17.80	17.41	22.25	21.81	21.36	26.93	26.44	25.94
	T/R	12.10	11.70	11.50	16.80	16.30	16.10	22.60	22.10	21.60	29.10	28.70	28.10	36.40	35.90	35.40	45.20	44.60	44.10	55.60	55.00	54.40
	AMPS*	5.23	5.60	6.04	5.40	5.74	6.20	5.69	6.05	6.41	5.99	6.36	6.75	6.32	6.70	7.09	6.77	7.13	7.52	7.31	7.67	8.06
	HI PR	228	245	263	247	264	283	273	291	310	305	324	344	343	363	384	392	412	432	453	473	493
LO PR	55	55	55	69	69	70	85	85	86	103	103	104	123	123	124	145	145	146	169	169	170	
640	CFM	65	70	75	65	70	75	65	70	75	65	70	75	65	70	75	65	70	75	65	70	75
	MBHt	6.36	6.13	5.86	8.79	8.48	8.27	11.69	11.37	11.04	14.85	14.51	14.17	18.40	18.02	17.64	22.49	22.06	21.64	27.26	26.78	26.31
	T/R	10.70	10.40	10.00	14.90	14.50	14.20	20.00	19.60	19.20	25.60	25.20	24.80	32.00	31.60	31.20	39.60	39.10	38.70	48.70	48.20	47.70
	AMPS*	5.17	5.54	5.91	5.31	5.65	6.09	5.56	5.91	6.28	5.81	6.17	6.55	6.14	6.48	6.85	6.59	6.90	7.27	7.13	7.44	7.78
	HI PR	224	240	258	241	258	276	265	282	301	293	312	332	331	349	369	380	397	417	442	458	476
LO PR	55	55	55	69	69	70	85	85	86	103	103	104	123	123	123	145	145	145	168	169	169	
720	CFM	65	70	75	65	70	75	65	70	75	65	70	75	65	70	75	65	70	75	65	70	75
	MBHt	6.43	6.19	5.93	8.90	8.59	8.28	11.82	11.51	11.17	14.96	14.64	14.31	18.51	18.16	17.79	22.61	22.21	21.80	27.44	26.97	26.52
	T/R	9.60	9.30	9.00	13.40	13.00	12.60	17.90	17.50	17.20	22.80	22.50	22.20	28.40	28.10	27.80	35.10	34.70	34.40	43.10	42.70	42.30
	AMPS*	5.13	5.50	5.87	5.24	5.59	5.94	5.46	5.81	6.18	5.69	6.04	6.41	6.04	6.37	6.72	6.54	6.83	7.14	7.08	7.34	7.65
	HI PR	220	237	254	236	253	271	258	276	294	286	304	323	323	341	360	376	391	408	438	452	468
LO PR	55	55	55	69	69	70	85	85	85	103	103	103	123	123	123	144	145	145	168	169	169	

HEATING		24 Size Outdoor With FVM4X36*** Indoor Heating - High Stage																				
		Outdoor Ambient Temperature - Degrees F, Dry Bulb										Entering Indoor Temperature - Degrees F, Dry Bulb										
		-3	7	17	27	37	47	57	67	75	75	65	70	75	65	70	75	65	70	75	65	70
600	CFM	65	70	75	65	70	75	65	70	75	65	70	75	65	70	75	65	70	75	65	70	75
	MBHt	8.62	8.35	8.07	11.07	10.77	10.45	13.78	13.44	13.09	16.69	16.34	15.98	20.00	19.61	19.21	23.78	23.36	22.93	28.15	27.70	27.22
	T/R	16.40	16.00	15.60	21.20	20.80	20.40	26.80	26.30	25.90	32.80	32.40	32.00	39.90	39.50	39.00	48.30	47.80	47.30	58.30	57.80	57.20
	AMPS*	5.41	5.66	5.92	5.91	6.19	6.47	6.47	6.76	7.07	7.09	7.41	7.74	7.85	8.18	8.53	8.81	9.15	9.51	9.97	10.32	10.70
	HI PR	246	264	282	269	287	306	296	315	335	329	349	369	369	389	410	420	439	460	480	499	519
LO PR	41	41	41	53	53	53	67	67	67	82	82	83	99	99	100	118	119	119	139	140	140	
700	CFM	65	70	75	65	70	75	65	70	75	65	70	75	65	70	75	65	70	75	65	70	75
	MBHt	8.76	8.49	8.21	11.25	10.95	10.64	14.00	13.65	13.33	16.87	16.54	16.20	20.19	19.83	19.46	24.00	23.60	23.20	28.47	28.04	27.58
	T/R	14.20	13.90	13.50	18.40	18.10	17.70	23.20	22.80	22.40	28.20	27.90	27.60	34.20	33.90	33.50	41.30	40.90	40.50	49.80	49.40	49.00
	AMPS*	5.35	5.61	5.87	5.82	6.10	6.38	6.34	6.63	6.94	6.93	7.23	7.56	7.71	8.01	8.34	8.67	8.98	9.30	9.78	10.10	10.42
	HI PR	240	257	275	260	278	296	285	303	323	316	334	354	357	375	394	409	426	444	468	484	501
LO PR	41	41	41	53	53	53	66	67	67	82	82	82	99	99	100	118	119	119	139	140	140	
800	CFM	65	70	75	65	70	75	65	70	75	65	70	75	65	70	75	65	70	75	65	70	75
	MBHt	8.87	8.60	8.33	11.38	11.10	10.79	14.07	13.83	13.49	16.98	16.67	16.34	20.29	19.94	19.59	24.10	23.72	23.34	28.63	28.20	27.79
	T/R	12.50	12.30	12.00	16.20	16.00	15.70	20.30	20.10	19.80	24.70	24.50	24.20	29.90	29.60	29.30	35.90	35.60	35.40	43.30	43.00	42.70
	AMPS*	5.32	5.58	5.84	5.77	6.05	6.33	6.26	6.56	6.86	6.87	7.16	7.46	7.67	7.96	8.26	8.64	8.92	9.23	9.74	10.02	10.33
	HI PR	235	252	269	253	271	289	277	295	314	308	326	345	351	368	386	404	420	437	463	478	494
LO PR	41	41	41	53	53	53	66	67	67	82	82	82	99	99	100	118	119	119	139	139	140	
900	CFM	65	70	75	65	70	75	65	70	75	65	70	75	65	70	75	65	70	75	65	70	75
	MBHt	8.96	8.70	8.42	11.48	11.21	10.91	14.15	13.88	13.59	17.05	16.75	16.44	20.35	20.01	19.66	24.17	23.79	23.41	28.71	28.30	27.90
	T/R	11.20	11.00	10.70	14.50	14.30	14.00	18.00	17.80	17.60	21.90	21.70	21.50	26.40	26.20	26.00	31.80	31.50	31.30	38.30	38.00	37.80
	AMPS*	5.30	5.57	5.83	5.74	6.02	6.30	6.21	6.50	6.81	6.85	7.13	7.42	7.68	7.95	8.24	8.65	8.93	9.21	9.73	10.01	10.31
	HI PR	231	248	266	248	266	284	271	289	307	304	321	339	349	364	381	403	417	433	460	475	491
LO PR	41	41	41	53	53	53	66	67	67	82	82	82	99	99	100	118	119	119	139	139	140	

COOLING		36 Size Outdoor With FVM4X60*** Indoor Cooling - Low Stage																								
		Outdoor Ambient Temperature - Degrees F, Dry Bulb																								
		85					95					105					115									
CFM	72	67	63††	62	57	72	67	63††	62	57	72	67	63††	62	57	72	67	63††	62	57						
720	MBH†	30.87	27.68	25.41	24.81	23.91	29.26	26.20	24.03	23.45	22.89	27.59	24.67	22.60	22.06	21.83	25.86	23.07	21.10	20.71	20.71	24.04	21.39	19.53	19.50	
	S/††	0.50	0.68	0.71	0.89	1.00	0.51	0.70	0.73	0.92	1.00	0.52	0.72	0.75	0.96	1.00	0.54	0.75	0.78	1.00	1.00	0.55	0.78	0.81	1.00	
	AMPS*	5.93	5.96	6.00	6.01	6.02	6.76	6.81	6.86	6.88	6.89	7.68	7.76	7.83	7.84	7.85	8.74	8.84	8.93	8.94	8.94	9.97	10.10	10.21	10.21	
	HI PR	256	253	250	250	249	296	292	289	289	288	339	335	332	331	331	387	383	380	379	379	439	439	435	431	431
	LO PR	161	148	138	136	132	163	150	141	138	136	166	153	143	141	140	169	155	145	144	144	172	158	148	148	
840	MBH†	31.89	28.60	26.27	25.68	25.37	30.17	27.02	24.80	24.27	24.26	28.40	25.40	23.28	23.10	23.10	26.57	23.71	21.70	21.88	21.88	24.65	21.94	20.04	20.58	
	S/††	0.52	0.71	0.74	0.94	1.00	0.53	0.74	0.77	1.00	1.00	0.54	0.76	0.79	1.00	1.00	0.56	0.79	0.83	1.00	1.00	0.58	0.83	0.87	1.00	
	AMPS*	5.97	6.00	6.03	6.04	6.04	6.79	6.84	6.89	6.90	6.90	7.71	7.78	7.85	7.85	7.85	8.76	8.86	8.94	8.93	8.93	9.99	10.12	10.22	10.19	
	HI PR	258	254	251	251	250	297	293	290	290	290	341	337	333	333	333	388	384	381	381	381	440	436	432	433	
	LO PR	165	152	142	140	139	168	154	144	142	142	170	157	147	146	146	173	159	149	150	150	175	162	151	154	
960	MBH†	32.68	29.32	26.94	26.61	26.61	30.87	27.66	25.39	25.42	25.42	29.03	25.96	23.80	24.18	24.17	27.12	24.20	22.16	22.87	22.87	25.12	22.37	20.44	21.48	
	S/††	0.54	0.75	0.78	1.00	1.00	0.55	0.77	0.81	1.00	1.00	0.57	0.80	0.84	1.00	1.00	0.58	0.84	0.87	1.00	1.00	0.61	0.88	0.92	1.00	
	AMPS*	6.01	6.03	6.06	6.07	6.07	6.83	6.87	6.92	6.92	6.92	7.74	7.81	7.87	7.86	7.86	8.79	8.88	8.97	8.94	8.94	10.02	10.14	10.24	10.18	
	HI PR	259	255	252	252	252	298	294	291	291	291	342	337	334	335	335	389	385	381	383	383	441	437	433	435	
	LO PR	169	155	145	144	144	171	157	147	148	148	173	160	149	151	151	176	162	151	155	155	178	164	154	160	
1080	MBH†	33.30	29.88	27.46	27.68	27.68	31.42	28.16	25.86	26.41	26.41	29.51	26.40	24.22	25.09	25.09	27.54	24.59	22.53	23.71	23.71	25.48	22.71	20.78	22.25	
	S/††	0.55	0.78	0.81	1.00	1.00	0.57	0.81	0.84	1.00	1.00	0.59	0.85	0.88	1.00	1.00	0.61	0.88	0.92	1.00	1.00	0.63	0.93	0.97	1.00	
	AMPS*	6.05	6.07	6.10	6.10	6.10	6.86	6.91	6.95	6.94	6.94	7.78	7.84	7.91	7.88	7.88	8.82	8.91	9.00	8.95	8.95	10.04	10.16	10.27	10.19	
	HI PR	259	256	253	253	253	299	295	292	293	293	342	338	336	336	336	390	386	382	384	384	442	437	434	437	
	LO PR	172	158	148	149	149	174	160	150	152	152	176	162	152	152	156	178	164	154	160	160	180	166	156	164	

COOLING		36 Size Outdoor With FVM4X60*** Indoor Cooling - High Stage Both Y and Z2 must be energized																							
		Outdoor Ambient Temperature - Degrees F, Dry Bulb																							
		85					95					105					115								
CFM	72	67	63††	62	57	72	67	63††	62	57	72	67	63††	62	57	72	67	63††	62	57					
900	MBH†	42.57	38.47	35.54	34.76	32.82	40.37	36.44	33.64	32.89	31.36	38.11	34.35	31.68	30.97	29.85	35.77	32.20	29.65	28.99	28.28	33.34	29.95	27.54	26.93
	S/††	0.50	0.67	0.70	0.86	1.00	0.51	0.68	0.71	0.89	1.00	0.52	0.70	0.73	0.91	1.00	0.52	0.72	0.75	0.94	1.00	0.54	0.74	0.77	0.98
	AMPS*	9.60	9.42	9.30	9.27	9.19	10.63	10.45	10.32	10.29	10.22	11.75	11.56	11.42	11.39	11.34	12.98	12.78	12.64	12.60	12.56	14.36	14.15	13.99	13.96
	HI PR	272	268	264	263	261	314	309	305	304	302	359	354	350	349	347	409	403	398	397	396	463	457	452	451
	LO PR	154	141	132	129	123	156	143	134	131	126	159	146	136	134	130	161	148	138	136	133	164	151	141	139
1050	MBH†	43.99	39.76	36.75	35.96	34.76	41.65	37.61	34.73	33.98	33.18	39.26	35.40	32.66	31.97	31.55	36.80	33.13	30.52	29.92	29.86	34.24	30.76	28.30	28.08
	S/††	0.51	0.70	0.73	0.91	1.00	0.52	0.71	0.74	0.94	1.00	0.53	0.73	0.76	0.97	1.00	0.54	0.75	0.78	0.99	1.00	0.56	0.78	0.81	1.00
	AMPS*	9.75	9.56	9.43	9.40	9.35	10.77	10.59	10.45	10.42	10.39	11.89	11.70	11.55	11.52	11.50	13.12	12.92	12.77	12.74	12.74	14.50	14.28	14.12	14.11
	HI PR	274	269	266	265	263	316	310	306	306	304	361	355	351	350	350	411	405	400	399	399	465	458	454	453
	LO PR	158	145	136	133	130	161	148	138	136	133	163	150	140	138	136	165	152	142	140	140	168	155	144	144
1200	MBH†	45.07	40.75	37.68	36.92	36.40	42.63	38.50	35.56	34.89	34.72	40.14	36.19	33.40	32.98	32.98	37.58	33.83	31.18	31.18	31.18	34.92	32.16	28.87	29.29
	S/††	0.53	0.73	0.76	0.96	1.00	0.54	0.74	0.77	0.98	1.00	0.55	0.77	0.80	1.00	1.00	0.56	0.79	0.82	1.00	1.00	0.58	0.81	0.85	1.00
	AMPS*	9.88	9.69	9.56	9.53	9.50	10.90	10.71	10.57	10.55	10.54	12.02	11.82	11.68	11.66	11.66	13.25	13.04	12.89	12.89	12.89	14.62	12.72	14.24	14.27
	HI PR	275	271	267	266	266	317	312	308	307	307	363	357	352	352	352	412	406	401	402	402	466	459	455	456
	LO PR	162	149	139	137	135	164	151	141	139	138	166	153	143	142	142	169	155	145	145	145	171	157	147	149
1350	MBH†	45.92	41.52	38.41	37.84	37.81	43.40	39.19	36.22	36.03	36.03	40.82	36.81	33.99	34.20	34.20	38.18	34.37	31.70	32.31	32.31	35.43	32.67	29.32	30.32
	S/††	0.54	0.76	0.79	1.00	1.00	0.56	0.78	0.81	1.00	1.00	0.57	0.80	0.83	1.00	1.00	0.58	0.83	0.86	1.00	1.00	0.60	0.85	0.90	1.00
	AMPS*	10.00	9.81	9.67	9.66	9.65	11.03	10.83	10.69	10.68	10.68	12.14	11.94	11.79	11.80	11.80	13.37	13.16	13.00	13.04	13.04	14.74	12.82	14.35	14.42
	HI PR	277	272	268	267	267	318	313	309	309	309	364	358	353	354	354	413	407	402	404	404	467	458	456	458
	LO PR	165	152	142	140	140	167	154	143	143	143	169	156	145	147	147	171	158	147	150	150	173	159	149	154



HEATING		36 Size Outdoor With FVMAX60**** Indoor Heating - Low Stage																					
		Outdoor Ambient Temperature - Degrees F, Dry Bulb																					
		17				27				37				47				57				67	
CFM	65	70	75	65	70	75	65	70	75	65	70	75	65	70	75	65	70	75					
720	MBht	10.99	10.35	9.65	14.46	13.85	13.19	17.81	17.21	16.58	21.09	20.48	19.85	24.24	23.64	23.03	27.42	26.72	26.04				
	T/R	12.80	12.10	11.40	17.60	17.00	16.30	22.90	22.30	21.60	28.60	28.00	27.30	34.80	34.20	33.50	41.80	41.00	40.30				
	AMPS*	6.64	7.01	7.39	6.80	7.18	7.57	6.97	7.36	7.75	7.17	7.56	7.96	7.40	7.80	8.21	7.71	8.09	8.50				
	HI PR	226	241	256	242	258	275	261	278	295	283	301	319	309	328	347	340	359	379				
	LO PR	54	55	55	68	68	69	83	84	84	101	101	101	120	120	121	141	141	142				
840	MBht	11.23	10.59	9.89	14.76	14.15	13.50	18.18	17.59	16.96	21.55	20.95	20.33	24.81	24.20	23.58	28.25	27.49	26.77				
	T/R	11.10	10.60	10.00	15.30	14.80	14.30	19.90	19.40	18.90	24.90	24.40	23.80	30.30	29.70	29.20	36.60	35.80	35.20				
	AMPS*	6.56	6.94	7.33	6.68	7.07	7.46	6.80	7.19	7.58	6.94	7.33	7.73	7.11	7.50	7.91	7.36	7.73	8.13				
	HI PR	221	236	252	235	251	268	252	269	286	271	288	306	293	311	331	320	339	358				
	LO PR	54	55	55	68	68	69	83	84	84	100	100	101	119	120	120	140	141	141				
960	MBht	11.41	10.78	10.08	14.99	14.39	13.74	18.47	17.88	17.26	21.90	21.31	20.69	25.29	24.63	24.01	28.84	28.13	27.34				
	T/R	9.90	9.40	8.90	13.60	13.20	12.70	17.60	17.20	16.70	22.00	21.60	21.10	26.80	26.30	25.90	32.40	31.90	31.20				
	AMPS*	6.51	6.90	7.30	6.59	6.99	7.38	6.67	7.06	7.47	6.78	7.16	7.56	6.91	7.29	7.69	7.11	7.49	7.87				
	HI PR	217	233	248	230	246	263	244	261	279	261	279	297	281	299	318	305	324	343				
	LO PR	54	55	55	68	68	68	83	83	84	100	100	101	119	119	120	139	140	141				
1080	MBht	11.56	10.93	10.24	15.17	14.58	13.93	18.70	18.11	17.49	22.18	21.59	20.98	25.67	24.99	24.35	29.30	28.58	27.88				
	T/R	8.90	8.50	8.00	12.20	11.80	11.40	15.80	15.40	15.00	19.70	19.40	19.00	24.10	23.60	23.20	29.10	28.60	28.10				
	AMPS*	6.48	6.88	7.28	6.54	6.93	7.33	6.59	6.98	7.38	6.66	7.05	7.45	6.77	7.14	7.54	6.94	7.31	7.70				
	HI PR	214	230	246	226	242	259	239	256	273	254	272	290	272	290	309	293	312	332				
	LO PR	54	55	55	68	68	68	83	83	84	100	100	101	119	119	120	139	140	140				

HEATING		36 Size Outdoor With FVMAX60**** Indoor Heating - High Stage																									
		Outdoor Ambient Temperature - Degrees F, Dry Bulb																									
		7				17				27				37				47				57				67	
CFM	65	70	75	65	70	75	65	70	75	65	70	75	65	70	75	65	70	75									
900	MBht	13.44	12.96	12.43	17.27	16.80	16.29	21.34	20.86	20.35	25.69	25.16	24.65	30.62	30.03	29.33	35.95	35.27	34.61								
	T/R	14.40	14.00	13.50	18.80	18.40	18.00	23.60	23.30	22.90	29.00	28.70	28.30	35.30	34.90	34.40	42.40	42.00	41.50								
	AMPS*	7.68	8.10	8.51	8.22	8.66	9.10	8.79	9.25	9.72	9.42	9.90	10.40	10.18	10.68	11.19	11.06	11.60	12.16								
	HI PR	231	248	264	247	264	281	265	282	301	286	304	324	312	332	351	344	364	385								
	LO PR	40	40	40	51	51	52	64	64	64	78	79	79	94	95	95	112	113	113								
1050	MBht	13.65	13.19	12.67	17.53	17.07	16.57	21.66	21.20	20.69	26.13	25.58	25.06	31.18	30.58	29.99	36.70	36.00	35.31								
	T/R	12.50	12.10	11.80	16.30	16.00	15.60	20.40	20.20	19.90	25.10	24.80	24.50	30.60	30.20	29.90	36.80	36.40	35.90								
	AMPS*	7.62	8.04	8.46	8.10	8.54	8.99	8.60	9.07	9.54	9.17	9.64	10.14	9.84	10.34	10.86	10.64	11.15	11.70								
	HI PR	226	242	259	239	256	274	255	272	290	273	291	310	297	315	335	324	344	365								
	LO PR	40	40	40	51	51	52	64	64	64	78	79	79	94	95	95	111	112	113								
1200	MBht	13.83	13.37	12.86	17.74	17.29	16.80	21.91	21.46	20.97	26.47	25.93	25.38	31.62	31.00	30.41	37.07	36.56	35.88								
	T/R	11.00	10.70	10.40	14.30	14.10	13.80	18.00	17.80	17.50	22.20	21.90	21.60	27.00	26.70	26.40	32.20	32.10	31.70								
	AMPS*	7.58	8.01	8.43	8.02	8.47	8.92	8.48	8.95	9.42	9.00	9.47	9.96	9.62	10.11	10.62	10.27	10.88	11.40								
	HI PR	222	238	255	233	250	268	247	265	283	264	282	301	285	304	323	306	329	349								
	LO PR	40	40	40	51	51	51	64	64	64	78	78	79	94	94	95	111	112	112								
1350	MBht	13.97	13.53	13.02	17.91	17.47	16.99	22.11	21.67	21.19	26.76	26.20	25.64	31.96	31.34	30.74	37.13	36.65	36.16								
	T/R	9.90	9.60	9.40	12.80	12.60	12.40	16.10	15.90	15.70	19.80	19.60	19.30	24.10	23.80	23.60	28.50	28.40	28.20								
	AMPS*	7.57	8.00	8.43	7.98	8.43	8.88	8.41	8.87	9.34	8.89	9.36	9.85	9.49	9.97	10.47	10.02	10.55	11.14								
	HI PR	218	235	252	229	246	263	241	259	277	257	275	293	276	295	314	294	314	335								
	LO PR	40	40	40	51	51	51	64	64	64	78	78	79	94	94	94	110	111	112								

COOLING		48 Size Outdoor With FVM4X60*** Indoor Cooling - Low Stage																								
		Outdoor Ambient Temperature - Degrees F, Dry Bulb																								
		75								85								95	105							
CFM	72	67	63††	62	57	72	67	63††	62	57	72	67	63††	62	57	72	67	63††	62	57	72	67	63††	62	57	
960	MBH†	41.45	37.19	34.16	33.36	32.07	39.34	35.26	32.36	31.61	30.69	37.13	33.23	30.47	29.77	29.24	34.79	31.09	28.48	27.85	27.68	32.31	28.81	26.34	26.01	26.01
	S/††	0.51	0.69	0.73	0.91	1.00	0.52	0.71	0.74	0.94	1.00	0.53	0.73	0.76	0.97	1.00	0.54	0.75	0.79	1.00	1.00	0.56	0.78	0.82	1.00	1.00
	AMPS*	8.98	9.02	9.07	9.08	9.10	10.09	10.16	10.22	10.24	10.26	11.32	11.41	11.50	11.52	11.54	12.72	12.85	12.96	12.99	13.00	14.34	14.51	14.65	14.67	14.67
	HI PR	256	253	251	250	249	297	293	290	290	289	341	337	334	333	333	389	385	382	381	381	442	438	434	434	434
	LO PR	159	146	136	134	130	161	148	138	136	133	163	150	140	138	136	166	153	143	141	140	168	155	145	144	144
1120	MBH†	42.79	38.39	35.27	34.50	33.97	40.55	36.34	33.36	32.67	32.47	38.21	34.20	31.37	30.90	30.90	35.75	31.95	29.27	29.22	29.22	33.14	29.55	27.03	27.42	27.42
	S/††	0.53	0.73	0.76	0.96	1.00	0.54	0.75	0.78	0.99	1.00	0.55	0.77	0.80	1.00	1.00	0.57	0.80	0.83	1.00	1.00	0.58	0.83	0.86	1.00	1.00
	AMPS*	9.07	9.10	9.14	9.15	9.16	10.16	10.23	10.29	10.30	10.31	11.38	11.48	11.56	11.58	11.58	12.91	12.91	13.02	13.01	13.01	14.40	14.56	14.70	14.67	14.67
	HI PR	258	254	252	251	251	298	294	291	291	291	342	338	335	335	335	391	386	383	383	383	444	439	435	436	436
	LO PR	163	150	140	138	137	165	152	142	140	139	167	154	144	143	143	169	156	146	146	146	172	158	148	150	150
1280	MBH†	43.81	39.30	36.12	35.58	35.57	41.47	37.16	34.13	33.97	33.97	39.03	34.93	32.05	32.29	32.29	36.47	32.59	29.87	30.51	30.51	33.76	30.11	27.56	28.59	28.59
	S/††	0.55	0.76	0.79	1.00	1.00	0.56	0.78	0.82	1.00	1.00	0.57	0.81	0.84	1.00	1.00	0.59	0.84	0.87	1.00	1.00	0.61	0.88	0.91	1.00	1.00
	AMPS*	9.16	9.19	9.22	9.23	9.23	10.25	10.31	10.37	10.37	10.37	11.46	11.55	11.63	11.62	11.62	12.85	12.97	13.08	13.05	13.05	14.46	14.62	14.76	14.70	14.70
	HI PR	258	255	252	252	252	299	295	292	292	292	343	339	336	336	336	392	387	384	385	385	444	440	436	438	438
	LO PR	166	153	143	142	142	168	155	145	145	145	170	157	147	148	148	172	159	149	151	151	175	161	151	155	155
1440	MBH†	44.61	40.02	36.79	36.95	36.95	42.19	37.81	34.73	35.26	35.26	39.66	35.51	32.59	33.48	33.48	37.02	33.10	30.35	31.60	31.60	34.23	30.56	27.98	29.59	29.59
	S/††	0.56	0.80	0.83	1.00	1.00	0.58	0.82	0.85	1.00	1.00	0.59	0.85	0.88	1.00	1.00	0.61	0.88	0.92	1.00	1.00	0.63	0.93	0.96	1.00	1.00
	AMPS*	9.25	9.27	9.31	9.30	9.30	10.33	10.39	10.45	10.43	10.43	11.54	11.63	11.71	11.68	11.68	12.92	13.04	13.15	13.10	13.10	14.53	14.69	14.82	14.73	14.73
	HI PR	259	256	253	253	253	300	296	293	293	293	344	340	337	338	338	392	388	385	386	386	445	441	437	439	439
	LO PR	169	156	146	147	147	171	157	147	149	149	173	159	149	152	152	175	161	151	156	156	177	163	153	160	160

COOLING		48 Size Outdoor With FVM4X60*** Indoor Cooling - High Stage																								
		Outdoor Ambient Temperature - Degrees F, Dry Bulb																								
		75								85								95	105							
CFM	72	67	63††	62	57	72	67	63††	62	57	72	67	63††	62	57	72	67	63††	62	57	72	67	63††	62	57	
1200	MBH†	55.42	50.10	46.30	45.30	42.83	52.83	47.72	44.07	43.12	41.12	50.11	45.22	41.73	40.82	39.31	47.23	42.56	39.24	38.39	37.38	44.14	39.72	36.57	35.80	35.29
	S/††	0.50	0.67	0.70	0.87	1.00	0.51	0.68	0.71	0.89	1.00	0.51	0.69	0.73	0.91	1.00	0.52	0.71	0.74	0.93	1.00	0.53	0.73	0.76	0.97	1.00
	AMPS*	13.85	13.64	13.49	13.45	13.36	15.15	14.93	14.78	14.74	14.66	16.55	16.33	16.17	16.14	16.07	18.10	17.87	17.70	17.66	17.61	19.80	19.56	19.38	19.35	19.32
	HI PR	271	266	263	262	260	313	308	304	303	302	358	353	349	349	347	408	403	399	398	397	463	457	453	452	451
	LO PR	152	140	130	128	122	154	142	132	130	125	157	144	134	132	128	159	146	136	134	131	162	149	139	137	135
1400	MBH†	57.15	51.67	47.76	46.76	45.24	54.40	49.14	45.40	44.47	43.39	51.52	46.50	42.93	42.07	41.44	48.49	43.70	40.31	39.56	39.36	45.25	40.71	37.50	37.12	37.12
	S/††	0.52	0.70	0.73	0.92	1.00	0.52	0.71	0.74	0.94	1.00	0.53	0.73	0.76	0.96	1.00	0.54	0.75	0.78	0.99	1.00	0.55	0.77	0.80	1.00	1.00
	AMPS*	14.10	13.88	13.72	13.68	13.62	15.39	15.17	15.01	14.97	14.93	16.79	16.57	16.40	16.37	16.34	18.33	18.10	17.92	17.89	17.88	20.04	19.79	19.61	19.60	19.60
	HI PR	272	268	265	264	263	314	309	306	305	304	360	355	351	350	349	410	405	400	399	399	465	459	454	454	454
	LO PR	157	144	134	132	128	159	146	136	134	131	161	148	138	136	134	163	150	140	138	138	166	152	142	142	142
1600	MBH†	58.46	52.86	48.88	47.95	47.26	55.59	50.22	46.41	45.59	45.29	52.59	47.46	43.83	43.22	43.22	49.43	44.56	41.10	41.01	41.01	46.07	41.46	38.20	38.63	38.63
	S/††	0.53	0.73	0.76	0.96	1.00	0.54	0.74	0.77	0.98	1.00	0.55	0.76	0.79	1.00	1.00	0.56	0.78	0.82	1.00	1.00	0.57	0.81	0.84	1.00	1.00
	AMPS*	14.53	14.10	13.94	13.90	13.88	15.62	15.39	15.22	15.20	15.18	17.02	16.78	16.61	16.59	16.59	18.55	18.31	18.14	18.14	18.14	20.26	20.01	19.82	19.85	19.85
	HI PR	273	269	266	265	264	315	311	307	306	306	361	356	352	352	352	411	406	401	402	402	466	460	455	456	456
	LO PR	160	147	137	135	134	162	149	139	137	136	164	151	141	140	140	166	153	143	143	143	168	155	145	147	147
1800	MBH†	59.48	53.79	49.74	49.01	48.98	56.51	51.05	47.19	46.91	46.91	53.41	48.21	44.53	44.72	44.72	50.16	45.21	41.72	42.40	42.40	46.70	42.03	38.74	39.90	39.91
	S/††	0.54	0.76	0.79	1.00	1.00	0.55	0.78	0.81	1.00	1.00	0.56	0.80	0.83	1.00	1.00	0.58	0.82	0.85	1.00	1.00	0.59	0.85	0.88	1.00	1.00
	AMPS*	14.55	14.31	14.14	14.12	14.12	15.83	15.60	15.43	15.42	15.42	17.23	16.99	16.82	16.83	16.83	18.77	18.52	18.34	18.38	18.38	20.47	20.21	20.03	20.10	20.10
	HI PR	274	270	266	266	266	316	312	308	308	308	362	357	353	353	353	413	407	402	403	403	467	461	456	458	458
	LO PR	163	150	140	138	138	165	151	141	141	141	166	153	143	144	144	169	155	145	147	147	171	157	147	151	151

HEATING		48 Size Outdoor With FVMAX60**** Indoor Heating - Low Stage																				
		Outdoor Ambient Temperature - Degrees F, Dry Bulb																				
		7	17	27	37	47	57	67	7	17	27	37	47	57	67	7	17	27	37	47	57	67
960	CFM	65	70	75	65	70	75	65	70	75	65	70	75	65	70	75	65	70	75	65	70	75
	MBHt	18.92	18.29	17.58	23.23	22.65	22.02	27.26	26.70	26.09	30.95	30.40	29.82	34.60	33.85	33.17	37.87	37.17	36.48	40.63	39.99	39.29
	T/R	14.50	14.10	13.70	19.30	18.90	18.50	24.90	24.60	24.20	30.60	30.30	30.00	37.40	36.90	36.40	45.00	44.60	44.10	53.70	53.20	52.70
	AMPS*	10.92	11.56	12.21	10.96	11.60	12.26	11.02	11.65	12.31	11.11	11.74	12.40	11.31	11.90	12.55	11.60	12.22	12.87	11.90	12.62	13.33
	HI PR	231	248	264	248	265	283	268	286	305	292	311	331	322	341	361	357	378	399	396	421	445
1120	LO PR	54	54	54	67	67	67	82	82	83	99	99	100	118	118	119	139	139	140	161	162	162
	MBHt	19.20	18.59	17.90	23.55	23.00	22.38	27.65	27.11	26.52	31.42	30.88	30.31	35.24	34.60	33.83	38.70	37.97	37.25	41.24	40.61	39.97
	T/R	12.90	12.60	12.30	17.00	16.70	16.40	21.50	21.30	21.00	26.50	26.20	26.00	32.40	32.00	31.60	39.00	38.60	38.20	46.10	45.70	45.40
	AMPS*	10.81	11.45	12.10	10.77	11.41	12.07	10.75	11.38	12.03	10.76	11.38	12.03	10.88	11.48	12.08	11.07	11.66	12.28	11.13	11.73	12.38
	HI PR	226	242	259	241	258	275	258	276	294	278	297	317	304	324	343	336	356	377	365	387	410
1280	LO PR	53	54	54	67	67	67	82	82	83	99	99	100	118	118	118	138	138	139	159	160	161
	MBHt	19.43	18.84	18.16	23.82	23.27	22.67	27.95	27.43	26.86	31.82	31.24	30.69	35.73	35.09	34.36	39.05	38.49	37.86	41.50	40.96	40.37
	T/R	11.40	11.20	10.90	15.00	14.80	14.50	18.90	18.70	18.50	23.30	23.10	22.90	28.50	28.20	27.90	34.20	34.00	33.70	40.20	40.00	39.70
	AMPS*	10.75	11.39	12.05	10.65	11.30	11.95	10.58	11.20	11.85	10.53	11.14	11.78	10.59	11.18	11.78	10.59	11.23	11.90	10.70	11.26	11.86
	HI PR	222	238	255	235	252	269	250	268	286	268	287	306	292	311	330	316	338	361	346	367	389
1440	LO PR	53	54	54	67	67	67	82	82	82	99	99	99	117	118	118	137	138	139	157	159	160
	MBHt	19.63	19.04	18.37	24.03	23.50	22.91	28.19	27.68	27.13	32.14	31.54	30.99	36.11	35.46	34.82	39.19	38.67	38.11	40.59	40.96	40.50
	T/R	10.20	10.00	9.70	13.40	13.20	13.00	16.90	16.70	16.60	20.80	20.60	20.40	25.50	25.20	25.00	30.30	30.10	29.90	34.60	35.20	35.10
	AMPS*	10.72	11.37	12.04	10.58	11.23	11.89	10.46	11.09	11.73	10.39	10.98	11.61	10.41	10.98	11.59	10.34	10.90	11.51	10.34	10.97	11.55
	HI PR	219	235	252	230	247	265	244	262	280	261	279	298	283	301	321	304	324	345	327	352	373
LO PR	53	54	54	67	67	67	82	82	82	99	99	99	117	117	118	137	138	138	153	157	158	

HEATING		48 Size Outdoor With FVMAX60**** Indoor Heating - High Stage																				
		Outdoor Ambient Temperature - Degrees F, Dry Bulb																				
		7	17	27	37	47	57	67	7	17	27	37	47	57	67	7	17	27	37	47	57	67
1200	CFM	65	70	75	65	70	75	65	70	75	65	70	75	65	70	75	65	70	75	65	70	75
	MBHt	19.32	18.86	18.33	24.04	23.58	23.07	29.08	28.61	28.09	34.87	34.18	33.52	41.21	40.49	39.76	48.29	47.44	46.59	55.18	54.47	53.77
	T/R	15.70	15.40	15.10	19.90	19.70	19.40	24.50	24.30	24.10	30.00	29.70	29.40	36.30	36.00	35.60	43.70	43.20	42.80	51.10	50.90	50.60
	AMPS*	11.33	11.84	12.35	12.09	12.63	13.18	12.91	13.48	14.07	13.86	14.44	15.04	14.97	15.59	16.23	16.31	16.96	17.64	17.50	18.23	19.04
	HI PR	235	252	269	251	268	286	269	288	307	293	312	331	321	341	361	357	378	399	389	412	436
1400	LO PR	39	39	39	50	50	50	63	63	63	77	77	78	93	93	93	110	110	111	128	129	130
	MBHt	19.58	19.15	18.64	24.35	23.91	23.42	29.49	29.00	28.50	35.40	34.80	34.07	41.90	41.19	40.46	48.57	48.00	47.36	55.10	54.58	53.98
	T/R	13.60	13.40	13.10	17.20	17.00	16.80	21.20	21.00	20.80	26.00	25.70	25.40	31.40	31.10	30.80	37.20	37.10	36.90	43.20	43.10	43.00
	AMPS*	11.30	11.82	12.34	12.00	12.55	13.11	12.75	13.33	13.91	13.64	14.23	14.81	14.67	15.27	15.90	15.64	16.35	17.11	16.85	17.55	18.28
	HI PR	229	246	264	243	260	278	259	277	296	280	299	318	306	325	345	331	353	377	364	386	408
1600	LO PR	39	39	39	50	50	50	63	63	63	77	77	77	92	92	93	109	110	111	125	127	128
	MBHt	19.81	19.39	18.89	24.61	24.19	23.71	29.82	29.31	28.83	35.81	35.22	34.54	42.30	41.70	40.98	48.37	47.97	47.48	51.23	52.62	53.65
	T/R	12.00	11.80	11.60	15.10	15.00	14.80	18.70	18.50	18.40	22.80	22.70	22.40	27.50	27.40	27.10	32.10	32.20	32.10	34.60	35.90	37.00
	AMPS*	11.33	11.85	12.37	11.98	12.53	13.09	12.69	13.25	13.84	13.54	14.12	14.69	14.47	15.12	15.73	15.37	16.02	16.69	15.92	16.89	17.86
	HI PR	225	242	259	237	254	272	252	270	288	271	289	308	294	314	334	318	338	359	331	361	390
1800	LO PR	39	39	39	50	50	50	62	63	63	77	77	77	92	92	93	108	109	110	116	121	126
	MBHt	20.01	19.60	19.11	24.83	24.42	23.95	30.10	29.59	29.11	36.13	35.56	34.97	42.26	41.85	41.35	46.66	47.60	47.30	47.19	48.62	49.91
	T/R	10.70	10.60	10.40	13.50	13.40	13.30	16.70	16.50	16.40	20.40	20.30	20.10	24.30	24.30	24.20	27.30	28.20	28.20	28.00	29.20	30.20
	AMPS*	11.38	11.91	12.43	12.00	12.55	13.11	12.68	13.23	13.82	13.50	14.08	14.67	14.29	14.94	15.65	15.03	15.86	16.53	15.20	16.11	17.06
	HI PR	221	238	256	232	250	268	246	264	282	264	282	301	284	304	326	303	328	349	305	332	361
LO PR	39	39	39	50	50	50	62	63	63	76	77	77	92	92	92	103	107	108	106	111	116	

COOLING		60 Size Outdoor With FVM4X60*** Indoor Cooling - Low Stage																			
		Outdoor Ambient Temperature - Degrees F, Dry Bulb																			
		85					95					105					115				
CFM	72	67	63††	62	57	72	67	63††	62	57	72	67	63††	62	57	72	67	63††	62	57	
1200	MBH†	49.68	45.02	41.67	40.79	39.45	47.60	43.10	39.87	39.04	38.08	45.34	41.02	37.93	37.15	36.59	42.89	38.77	35.82	35.13	34.95
	S/††	0.51	0.69	0.72	0.90	1.00	0.52	0.71	0.74	0.93	1.00	0.53	0.73	0.76	0.96	1.00	0.54	0.75	0.78	0.99	1.00
	AMPS*	11.27	11.33	11.39	11.41	11.44	12.78	12.88	12.97	12.97	13.02	14.47	14.60	14.72	14.75	14.77	16.39	16.57	16.73	16.76	16.77
	HI PR	263	259	257	256	255	304	300	297	296	295	349	344	341	340	340	398	393	390	389	389
	LO PR	159	146	136	134	130	161	148	138	136	133	163	150	140	138	136	166	152	142	140	140
1400	MBH†	50.96	46.22	42.80	41.99	41.52	48.78	44.19	40.90	40.19	40.04	46.39	42.00	38.86	38.42	38.42	43.82	39.63	36.64	36.66	36.66
	S/††	0.53	0.73	0.75	0.95	1.00	0.54	0.74	0.77	0.98	1.00	0.55	0.77	0.80	1.00	1.00	0.56	0.79	0.82	1.00	1.00
	AMPS*	11.42	11.47	11.52	11.53	11.54	12.91	13.00	13.09	13.10	13.11	14.58	14.72	14.84	14.85	14.85	16.50	16.68	16.83	16.82	16.82
	HI PR	264	260	258	257	257	305	301	298	297	297	350	345	342	342	342	399	394	391	391	391
	LO PR	163	150	140	138	137	165	152	142	140	139	167	154	143	143	143	169	156	145	146	146
1600	MBH†	51.90	47.11	43.65	43.23	43.23	49.63	45.00	41.68	41.65	41.65	47.17	42.72	39.55	39.93	39.93	44.49	40.27	37.26	38.05	38.06
	S/††	0.54	0.76	0.79	1.00	1.00	0.56	0.78	0.81	1.00	1.00	0.57	0.81	0.84	1.00	1.00	0.59	0.84	0.87	1.00	1.00
	AMPS*	11.56	11.61	11.66	11.66	11.66	13.05	13.14	13.22	13.21	13.21	14.71	14.84	14.96	14.94	14.94	16.62	16.80	16.95	16.90	16.90
	HI PR	265	261	258	258	258	306	302	299	299	299	351	346	343	344	344	400	395	392	393	393
	LO PR	167	153	143	142	142	168	155	144	145	145	170	157	146	148	148	172	158	148	151	151
1800	MBH†	52.62	47.79	44.31	44.67	44.67	50.27	45.62	42.28	43.00	43.01	47.73	43.28	40.09	41.19	41.19	44.99	40.77	37.74	39.22	39.22
	S/††	0.56	0.80	0.82	1.00	1.00	0.58	0.82	0.85	1.00	1.00	0.59	0.85	0.88	1.00	1.00	0.61	0.88	0.91	1.00	1.00
	AMPS*	11.71	11.75	11.80	11.79	11.79	13.19	13.27	13.35	13.33	13.33	14.85	14.97	15.09	15.04	15.04	16.75	16.92	17.07	16.99	16.99
	HI PR	265	262	259	259	259	306	302	299	300	300	351	347	344	345	345	400	396	392	394	394
	LO PR	169	156	145	147	147	171	157	147	149	149	173	159	148	152	152	174	161	150	156	156

COOLING		60 Size Outdoor With FVM4X60*** Indoor Cooling - High Stage																			
		Outdoor Ambient Temperature - Degrees F, Dry Bulb																			
		85					95					105					115				
CFM	72	67	63††	62	57	72	67	63††	62	57	72	67	63††	62	57	72	67	63††	62	57	
1500	MBH†	66.60	60.61	56.26	55.11	52.09	64.00	58.22	54.02	52.92	50.43	61.19	55.64	51.61	50.56	48.63	58.11	52.82	48.98	47.99	46.64
	S/††	0.50	0.67	0.70	0.87	1.00	0.50	0.68	0.71	0.88	1.00	0.51	0.68	0.71	0.89	1.00	0.51	0.69	0.72	0.91	1.00
	AMPS*	18.08	17.73	17.48	17.41	17.25	19.64	19.29	19.04	18.98	18.83	21.30	20.95	20.69	20.63	20.51	23.09	22.74	22.47	22.41	22.32
	HI PR	282	277	273	272	270	325	319	315	314	312	372	366	361	360	358	423	416	412	411	409
	LO PR	150	138	128	126	119	153	140	130	128	122	155	142	132	130	125	157	144	134	132	129
1750	MBH†	68.38	62.27	57.85	56.71	54.79	65.62	59.74	55.47	54.40	52.99	62.64	57.00	52.91	51.93	51.03	59.39	54.02	50.13	49.27	48.87
	S/††	0.52	0.70	0.73	0.91	1.00	0.52	0.71	0.74	0.93	1.00	0.52	0.72	0.75	0.94	1.00	0.53	0.73	0.76	0.96	1.00
	AMPS*	18.48	18.12	17.86	17.81	17.69	20.03	19.68	19.42	19.36	19.28	21.68	21.33	21.06	21.01	20.95	23.47	23.10	22.83	22.79	22.76
	HI PR	284	279	275	274	272	327	321	317	316	315	374	368	363	362	361	425	418	413	412	412
	LO PR	155	142	132	130	126	157	144	134	132	129	159	146	136	134	132	161	148	138	136	135
2000	MBH†	69.70	63.52	59.03	57.98	57.03	66.82	60.85	56.54	55.61	55.10	63.70	57.99	53.87	53.12	53.00	60.32	54.89	50.97	50.70	50.70
	S/††	0.53	0.73	0.76	0.96	1.00	0.53	0.74	0.77	0.97	1.00	0.54	0.75	0.78	0.99	1.00	0.55	0.77	0.79	1.00	1.00
	AMPS*	18.86	18.49	18.23	18.18	18.12	20.40	20.04	19.77	19.73	19.70	22.04	21.68	21.41	21.37	21.37	23.82	23.46	23.18	23.17	23.17
	HI PR	285	280	276	275	274	328	323	318	318	317	375	369	364	364	364	426	420	415	415	415
	LO PR	158	145	135	133	131	160	147	137	135	134	162	149	139	137	137	164	151	141	141	141
2250	MBH†	70.70	64.45	59.94	59.11	58.90	67.71	61.69	57.35	56.85	56.86	64.49	58.73	54.59	54.64	54.64	61.00	55.53	51.60	52.21	52.21
	S/††	0.54	0.76	0.79	0.99	1.00	0.55	0.77	0.80	1.00	1.00	0.56	0.78	0.81	1.00	1.00	0.56	0.80	0.83	1.00	1.00
	AMPS*	19.22	18.85	18.58	18.54	18.53	20.75	20.38	20.11	20.09	20.09	22.38	22.02	21.75	21.76	21.76	24.15	23.78	23.50	23.56	23.56
	HI PR	286	281	277	276	276	329	324	319	319	319	376	370	366	366	366	427	421	416	417	417
	LO PR	161	148	138	136	136	163	149	139	139	139	165	151	141	142	142	167	153	143	145	145

HEATING		60 Size Outdoor With FVM4X60*** Indoor Heating - Low Stage																																			
		Outdoor Ambient Temperature - Degrees F, Dry Bulb						37						47						57						67											
		7	17	27	37	47	57	65	70	75	80	85	90	95	100	105	65	70	75	80	85	90	95	100	105	65	70	75	80	85	90	95	100	105			
1200	CFM	65	70	75	80	85	90	95	100	105	65	70	75	80	85	90	95	100	105	65	70	75	80	85	90	95	100	105	65	70	75	80	85	90	95	100	105
	MBHt	21.20	20.78	20.30	25.91	25.48	25.02	31.05	30.62	30.14	36.61	36.15	35.66	42.98	42.24	41.61	49.57	48.96	48.35	56.51	55.84	55.21															
	T/R	17.30	17.10	16.90	21.40	21.20	21.00	25.90	25.60	25.60	31.00	30.80	30.70	36.90	36.50	36.30	43.20	43.00	42.80	50.00	49.80	49.60															
	AMPS*	11.93	12.69	13.48	12.42	13.21	14.03	12.97	13.79	14.63	13.59	14.44	15.33	14.39	15.22	16.12	15.04	15.96	16.95	16.02	16.96	17.97															
	HI PR	240	257	274	255	273	291	273	292	311	295	314	334	321	341	362	346	368	391	379	401	425															
1400	LO PR	51	51	52	64	65	65	79	79	80	96	96	96	114	114	115	133	134	135	153	154	155															
	MBHt	21.45	21.05	20.59	26.20	25.80	25.35	31.41	30.99	30.53	37.03	36.59	36.11	43.53	43.00	42.24	50.06	49.47	48.88	57.07	56.38	55.66															
	T/R	14.90	14.80	14.60	18.40	18.30	18.20	22.30	22.20	22.10	26.70	26.60	26.40	31.70	31.60	31.30	37.00	36.80	36.70	42.70	42.60	42.40															
	AMPS*	11.78	12.55	13.34	12.19	12.98	13.79	12.65	13.46	14.29	13.16	13.99	14.86	13.79	14.67	15.52	14.33	15.19	16.10	15.16	16.04	16.98															
	HI PR	233	250	268	247	264	283	262	281	300	281	300	320	304	324	344	325	346	368	353	375	397															
1600	LO PR	51	51	52	64	64	65	79	79	79	95	95	96	113	114	114	132	133	134	151	152	153															
	MBHt	21.66	21.28	20.83	26.45	26.06	25.62	31.69	31.29	30.85	37.42	36.93	36.47	43.77	43.31	42.76	50.33	49.79	49.23	55.94	56.66	56.02															
	T/R	13.20	13.00	12.90	16.20	16.10	16.00	19.60	19.60	19.40	23.40	23.30	23.20	27.70	27.70	27.60	32.20	32.20	32.10	36.20	37.10	37.00															
	AMPS*	11.70	12.48	13.27	12.05	12.84	13.65	12.45	13.25	14.08	12.89	13.70	14.56	13.32	14.18	15.14	13.89	14.72	15.60	14.47	15.46	16.36															
	HI PR	228	245	263	240	258	276	254	272	291	271	290	310	289	309	332	310	331	352	330	356	379															
1800	LO PR	51	51	51	64	64	65	79	79	79	95	95	96	113	114	114	131	132	133	146	151	152															
	MBHt	21.85	21.48	21.04	26.67	26.28	25.85	31.93	31.51	31.11	37.73	37.23	36.77	43.95	43.50	42.99	50.38	49.92	49.42	53.47	54.48	55.19															
	T/R	11.80	11.70	11.50	14.50	14.40	14.30	17.50	17.40	17.40	20.90	20.80	20.70	24.60	24.60	24.50	28.50	28.50	28.50	30.50	31.40	32.10															
	AMPS*	11.68	12.45	13.24	11.98	12.76	13.58	12.34	13.13	13.95	12.73	13.52	14.36	13.08	13.89	14.77	13.62	14.42	15.28	13.92	14.87	15.86															
	HI PR	225	242	259	235	253	271	248	266	285	264	282	302	279	299	320	299	319	340	308	334	361															
2000	LO PR	51	51	51	64	64	65	79	79	79	95	95	96	112	113	114	130	131	132	139	144	148															

HEATING		60 Size Outdoor With FVM4X60*** Indoor Heating - High Stage																																			
		Outdoor Ambient Temperature - Degrees F, Dry Bulb						37						47						57						67											
		-3	7	17	27	37	47	65	70	75	80	85	90	95	100	105	65	70	75	80	85	90	95	100	105	65	70	75	80	85	90	95	100	105			
1500	CFM	65	70	75	80	85	90	95	100	105	65	70	75	80	85	90	95	100	105	65	70	75	80	85	90	95	100	105	65	70	75	80	85	90	95	100	105
	MBHt	24.79	24.41	23.96	30.30	29.91	29.46	36.38	35.96	35.52	43.50	42.95	42.24	51.51	50.78	50.09	59.49	58.85	58.20	68.41	67.69	66.99															
	T/R	17.40	17.30	17.10	21.30	21.20	21.10	25.60	25.60	25.50	30.80	30.70	30.40	36.70	36.50	36.30	42.60	42.50	42.40	49.30	49.20	49.10															
	AMPS*	14.25	14.98	15.72	15.30	16.07	16.85	16.42	17.25	18.09	17.72	18.58	19.43	19.16	20.12	21.05	20.48	21.45	22.46	22.26	23.29	24.38															
	HI PR	242	259	277	257	275	294	275	294	314	298	317	337	325	346	367	350	371	394	384	407	430															
1750	LO PR	36	36	36	47	47	47	59	59	59	72	73	73	88	88	88	103	104	104	119	120	121															
	MBHt	25.11	24.75	24.33	30.67	30.30	29.88	36.85	36.40	35.97	44.06	43.51	42.96	51.65	51.21	50.68	59.46	59.00	58.46	65.08	66.20	66.87															
	T/R	15.00	14.90	14.80	18.40	18.30	18.20	22.10	22.00	22.00	26.50	26.40	26.30	31.20	31.20	31.20	36.10	36.10	36.10	39.50	40.70	41.50															
	AMPS*	14.24	14.98	15.72	15.22	15.99	16.77	16.25	17.07	17.90	17.45	18.29	19.17	18.54	19.48	20.48	19.85	20.80	21.79	20.83	22.14	23.43															
	HI PR	235	253	271	249	267	285	264	283	303	285	304	324	307	326	348	330	351	373	347	376	404															
2250	LO PR	36	36	36	47	47	47	59	59	59	72	72	73	87	87	88	101	102	103	111	115	118															
	MBHt	25.40	25.05	24.65	30.99	30.64	30.23	37.25	36.78	36.36	44.53	43.98	43.42	51.67	51.29	50.91	58.31	58.72	58.38	60.10	61.59	62.73															
	T/R	13.20	13.20	13.10	16.20	16.10	16.10	19.50	19.40	19.30	23.30	23.20	23.10	27.10	27.20	27.20	30.70	31.20	31.30	31.50	32.60	33.60															
	AMPS*	14.30	15.04	15.79	15.23	16.00	16.78	16.21	17.01	17.84	17.34	18.17	19.03	18.29	19.18	20.11	19.37	20.43	21.40	19.62	20.88	22.16															
	HI PR	230	248	266	242	260	279	257	275	294	276	295	313	293	313	334	313	336	358	315	343	371															
2500	LO PR	36	36	36	47	47	47	59	59	59	72	72	73	86	87	87	98	100	101	101	105	109															
	MBHt	25.67	25.32	24.93	31.27	30.93	30.54	37.58	37.13	36.69	44.71	44.35	43.82	51.51	51.24	50.94	54.79	56.14	57.25	56.15	57.68	59.06															
	T/R	11.90	11.80	11.70	14.50	14.40	14.40	17.40	17.30	17.30	20.70	20.70	20.70	23.90	24.00	24.10	25.40	26.30	27.10	25.90	26.90	27.80															
	AMPS*	14.40	15.15	15.90	15.30	16.07	16.85	16.23	17.03	17.86	17.22	18.15	19.00	18.19	19.06	19.98	18.70	19.86	21.04	18.89	20.09	21.32															
	HI PR	227	244	262	238	255	274	251	269	288	268	288	308	285	304	325	293	318	344	294	320	347															
2750	LO PR	36	36	36	46	46	47	58	59	59	72	72	72	85	86	87	91	95	98	93	97	102															
	MBHt	26.10	25.75	25.40	31.74	31.39	31.04	38.06	37.61	37.16	45.18	44.73	44.28	52.00	51.65	51.20	55.12	56.47	57.82	56.73	58.24	59.75															
	T/R	10.80	10.70	10.60	13.40	13.30	13.20	16.20	16.10	16.00	19.20	19.10	19.00	22.20	22.10	22.00	25.20	25.10	25.00	28.20	28.10	28.00															
	AMPS*	14.50	15.25	16.00	15.40	16.17	16.95	16.33	17.13	17.92	17.28	18.11	19.00	18.19	19.06	19.98	18.70	19.86	21.04	18.99	20.09	21.32															
	HI PR	224	241	259	235	253	271	248	266	285	264	282	302	279	299	320	299	319	340	308	334	361															

COOLING Multiplying Factors for other Indoor Combinations																											
Indoor Model	Furnace Model	Low			High			Indoor Model	Furnace Model	Low			High														
		Capac. (MBh)	Power (AMPS)	Power (AMPS)	Capac. (MBh)	Power (AMPS)	Power (AMPS)			Capac. (MBh)	Power (AMPS)	Power (AMPS)	Capac. (MBh)	Power (AMPS)	Power (AMPS)												
<b>(C,H,T)4H524</b>																											
>FVM4X36***		1.00	1.00	1.00	1.00	1.00	1.00	ED*4X36**		0.98	1.12	0.97	1.11														
ED*4X30B**	*8MPV050	1.01	1.04	1.00	1.00	1.00	1.07	EHD4X30A**	*8MPV050	1.01	1.04	1.01	1.07														
ED*4X30B**	MV08B15**B*	1.00	1.01	0.99	0.99	1.00	1.00	EHD4X30A**	*8MPV075	1.01	1.02	1.01	1.04														
ED*4X30B**		0.97	1.12	0.97	0.97	1.11	1.11	EHD4X30A**	*8MPV100	1.02	1.02	1.03	1.04														
ED*4X30F**	*8MPV075	1.02	1.03	1.02	1.02	1.04	1.04	EHD4X30A**	*8MPV125	1.03	1.03	1.03	1.03														
ED*4X30F**	*9MPV050	1.00	1.02	1.00	1.00	1.04	1.04	EHD4X30A**	*9MPV050	1.00	1.03	1.00	1.05														
ED*4X30F**	*9MPV075	1.01	1.03	1.00	1.00	1.04	1.04	EHD4X30A**	*9MPV075	1.01	1.04	1.00	1.05														
ED*4X30F**	*9MVX040	1.00	1.03	1.00	1.00	1.05	1.05	EHD4X30A**	*9MPV100	1.01	1.03	1.02	1.05														
ED*4X30F**	*9MVX060	1.01	1.03	1.01	1.01	1.05	1.05	EHD4X30A**	*9MPV125	1.02	1.03	1.02	1.04														
ED*4X30F**	MV12F19**B*	1.00	1.01	1.00	1.00	1.00	1.00	EHD4X30A**	*9MVX040	1.00	1.03	1.00	1.05														
ED*4X30F**		0.97	1.12	0.97	0.97	1.11	1.11	EHD4X30A**	*9MVX060	1.01	1.04	1.01	1.05														
ED*4X36B**	*8MPV050	1.02	1.04	1.01	1.01	1.07	1.07	EHD4X30A**	*9MVX080	1.03	1.04	1.03	1.05														
ED*4X36B**	*8MPV075	1.02	1.03	1.01	1.01	1.03	1.03	EHD4X30A**	*9MVX100	1.02	1.03	1.02	1.04														
ED*4X36B**	*9MPV050	1.00	1.02	1.00	1.00	1.05	1.05	EHD4X30A**	MV08B15**B*	1.00	1.00	1.00	1.01														
ED*4X36B**	*9MPV075	1.01	1.04	1.00	1.00	1.05	1.05	EHD4X30A**	MV12F19**B*	1.00	1.01	1.00	1.00														
ED*4X36B**	MV08B15**B*	1.00	1.00	1.00	1.00	1.00	1.00	EHD4X30A**		0.98	1.12	0.97	1.10														
ED*4X36F**		0.98	1.12	0.97	0.97	1.11	1.11	EHD4X36A**	*8MPV050	1.03	1.04	1.03	1.07														
ED*4X36F**	*8MPV050	1.02	1.04	1.01	1.01	1.07	1.07	EHD4X36A**	*8MPV075	1.03	1.02	1.03	1.04														
ED*4X36F**	*8MPV075	1.02	1.02	1.02	1.02	1.04	1.04	EHD4X36A**	*9MPV050	1.01	1.02	1.02	1.04														
ED*4X36F**	*8MPV100	1.05	1.03	1.03	1.03	1.04	1.04	EHD4X36A**	*9MPV075	1.02	1.03	1.02	1.04														
ED*4X36F**	*9MPV050	1.01	1.03	1.00	1.00	1.04	1.04	EHD4X36A**	*9MPV100	1.03	1.04	1.03	1.04														
ED*4X36F**	*9MPV075	1.02	1.04	1.01	1.01	1.05	1.05	EHD4X36A**	*9MPV125	1.05	1.03	1.04	1.04														
ED*4X36F**	*9MPV100	1.02	1.03	1.03	1.03	1.05	1.05	EHD4X36A**	*9MVX040	1.01	1.03	1.02	1.05														
ED*4X36F**	*9MVX040	1.00	1.02	1.00	1.00	1.04	1.04	EHD4X36A**	*9MVX060	1.02	1.03	1.03	1.05														
ED*4X36F**	*9MVX060	1.02	1.04	1.01	1.01	1.04	1.04	EHD4X36A**	*9MVX080	1.06	1.04	1.04	1.04														

> Indicates Tested Indoor Model

- continued on next page -

**COOLING Multiplying Factors for other Indoor Combinations (continued)**

Indoor Model	Furnace Model	Low		High		Indoor Model	Furnace Model	Low		High	
		Capac. (MBh)	Power (AMPS)	Capac. (MBh)	Power (AMPS)			Capac. (MBh)	Power (AMPS)	Capac. (MBh)	Power (AMPS)
ED*4X36F**	MV12F19**B*	1.00	1.01	1.00	1.00	EHD4X36A**	*9MVX100	1.03	1.02	1.04	1.04
ED*4X36F**		0.98	1.12	0.97	1.11	EHD4X36A**	MV08B15**B*	1.01	1.00	1.01	1.00
ED*4X36J**	*8MPV075	1.03	1.03	1.03	1.04	EHD4X36A**	MV12F19**B*	1.01	1.01	1.02	1.00
ED*4X36J**	*9MPV050	1.01	1.02	1.01	1.04	EHD4X36A**		0.99	1.12	0.99	1.11
ED*4X36J**	*9MPV075	1.02	1.03	1.01	1.04	FVM4X24***		1.00	1.01	0.99	1.01
<b>(C,H,T)4H736</b>											
>FVM4X60****		1.00	1.00	1.00	1.00	ED*4X48L**		0.96	1.09	0.96	1.15
ED*4X36B**	*8MPV050	0.93	1.08	0.95	1.08	ED*4X48L**	*9MVX100	0.98	1.04	0.99	1.04
ED*4X36B**		0.94	1.09	0.94	1.15	ED*4X48L**	MV20L24**B*	0.98	1.00	0.98	1.02
ED*4X36B**	MV08B15**B*	0.95	1.02	0.97	1.03	EHD4X36A**	*8MPV050	0.96	1.08	0.97	1.07
ED*4X36F**	*8MPV075	0.95	1.05	0.97	1.05	EHD4X36A**	*8MPV075	0.98	1.06	0.98	1.05
ED*4X36F**	*9MPV050	0.94	1.08	0.95	1.06	EHD4X36A**	*8MPV100	0.99	1.05	0.99	1.04
ED*4X36F**	*9MPV075	0.94	1.07	0.95	1.06	EHD4X36A**	*8MPV125	0.99	1.04	0.98	1.03
ED*4X36F**		0.94	1.09	0.94	1.15	EHD4X36A**	*9MPV050	0.97	1.08	0.97	1.06
ED*4X36F**	*9MVX040	0.94	1.08	0.95	1.07	EHD4X36A**	*9MPV075	0.97	1.07	0.97	1.06
ED*4X36F**	*9MVX060	0.95	1.07	0.95	1.05	EHD4X36A**	*9MPV100	0.98	1.06	0.98	1.05
ED*4X36F**	MV12F19**B*	0.95	1.00	0.97	1.02	EHD4X36A**	*9MPV125	0.98	1.05	0.98	1.04
ED*4X36J**	*8MPV100	0.97	1.04	0.98	1.04	EHD4X36A**		0.96	1.09	0.96	1.15
ED*4X36J**	*9MPV100	0.96	1.05	0.98	1.05	EHD4X36A**	*9MVX040	0.96	1.08	0.97	1.07
ED*4X36J**		0.94	1.09	0.94	1.15	EHD4X36A**	*9MVX060	0.97	1.07	0.97	1.05
ED*4X36J**	*9MVX080	0.97	1.05	0.98	1.05	EHD4X36A**	*9MVX080	0.99	1.06	0.99	1.05
ED*4X36J**	MV16J22**B*	0.95	0.99	0.97	1.02	EHD4X36A**	*9MVX100	0.98	1.04	0.98	1.04
ED*4X42F**	*8MPV075	0.96	1.05	0.94	1.02	EHD4X36A**	MV08B15**B*	0.98	1.02	0.98	1.02
ED*4X42F**	*9MPV050	0.95	1.08	0.94	1.05	EHD4X36A**	MV12F19**B*	0.98	1.01	0.98	1.01
ED*4X42F**	*9MPV075	0.95	1.07	0.94	1.05	EHD4X36A**	MV16J22**B*	0.98	1.01	0.98	1.02

> Indicates Tested Indoor Model

- continued on next page -



**COOLING Multiplying Factors for other Indoor Combinations (continued)**

Indoor Model	Furnace Model	Low		High		Indoor Model	Furnace Model	Low		High	
		Capac. (MBh)	Power (AMPS)	Capac. (MBh)	Power (AMPS)			Capac. (MBh)	Power (AMPS)	Capac. (MBh)	Power (AMPS)
ED*4X42F**		0.94	1.09	0.94	1.14	EHD4X36A**	MV20L24**B*	0.98	1.01	0.98	1.03
ED*4X42F**	*9MVX040	0.95	1.08	0.96	1.07	EHD4X42A**	*8MPV050	0.97	1.08	0.98	1.07
ED*4X42F**	*9MVX060	0.95	1.07	0.96	1.05	EHD4X42A**	*8MPV075	0.98	1.06	0.99	1.05
ED*4X42F**	MV12F19**B*	0.97	1.00	0.98	1.02	EHD4X42A**	*8MPV100	0.99	1.04	1.00	1.04
ED*4X42J**	*8MPV100	0.98	1.05	0.98	1.04	EHD4X42A**	*8MPV125	0.99	1.03	0.99	1.03
ED*4X42J**	*8MPV125	0.98	1.03	0.98	1.03	EHD4X42A**	*9MPV050	0.97	1.09	0.98	1.06
ED*4X42J**	*9MPV100	0.97	1.05	0.98	1.05	EHD4X42A**	*9MPV075	0.97	1.07	0.98	1.06
ED*4X42J**		0.94	1.09	0.94	1.14	EHD4X42A**	*9MPV100	0.99	1.05	1.00	1.05
ED*4X42J**	*9MVX080	0.97	1.05	0.98	1.05	EHD4X42A**	*9MPV125	0.99	1.05	0.99	1.04
ED*4X42L**	MV16J22**B*	0.97	1.00	0.98	1.02	EHD4X42A**		0.97	1.09	0.96	1.14
ED*4X42L**	*9MPV125	0.97	1.03	0.98	1.04	EHD4X42A**	*9MVX040	0.97	1.09	0.98	1.07
ED*4X42L**		0.94	1.09	0.94	1.14	EHD4X42A**	*9MVX060	0.98	1.07	0.98	1.05
ED*4X42L**	*9MVX100	0.97	1.03	0.98	1.03	EHD4X42A**	*9MVX080	0.99	1.06	1.00	1.05
ED*4X42L**	MV20L24**B*	0.97	1.00	0.98	1.02	EHD4X42A**	*9MVX100	0.99	1.04	0.99	1.04
ED*4X48F**	*8MPV050	0.97	1.08	0.98	1.08	EHD4X42A**	MV08B15**B*	0.98	1.02	0.98	1.02
ED*4X48F**	*8MPV075	0.98	1.06	0.99	1.05	EHD4X42A**	MV12F19**B*	0.98	1.01	0.99	1.01
ED*4X48F**	*8MPV100	0.99	1.05	1.00	1.04	EHD4X42A**	MV16J22**B*	0.98	1.01	0.99	1.02
ED*4X48F**	*8MPV125	0.99	1.03	1.00	1.03	EHD4X42A**	MV20L24**B*	0.98	1.01	0.98	1.02
ED*4X48F**	*9MPV050	0.97	1.09	0.98	1.06	EHD4X48A**	*8MPV050	0.97	1.09	0.98	1.07
ED*4X48F**	*9MPV075	0.98	1.08	0.98	1.07	EHD4X48A**	*8MPV075	0.99	1.05	0.99	1.05
ED*4X48F**	*9MPV100	0.99	1.05	1.00	1.05	EHD4X48A**	*8MPV100	1.00	1.05	1.01	1.04
ED*4X48F**		0.97	1.09	0.97	1.15	EHD4X48A**	*8MPV125	1.00	1.04	1.00	1.03
ED*4X48F**	*9MVX040	0.97	1.09	0.98	1.07	EHD4X48A**	*9MPV050	0.97	1.08	0.98	1.06
ED*4X48F**	*9MVX060	0.98	1.07	0.98	1.04	EHD4X48A**	*9MPV075	0.98	1.07	0.98	1.06
ED*4X48F**	MV12F19**B*	0.99	1.01	0.99	1.01	EHD4X48A**	*9MPV100	0.99	1.06	1.00	1.05
ED*4X48J**	*8MPV075	0.98	1.05	0.99	1.05	EHD4X48A**	*9MPV125	0.99	1.04	1.00	1.04

> Indicates Tested Indoor Model  
 - continued on next page -



**COOLING Multiplying Factors for other Indoor Combinations (continued)**

Indoor Model	Furnace Model	Low		High		Indoor Model	Furnace Model	Low		High	
		Capac. (MBh)	Power (AMPS)	Capac. (MBh)	Power (AMPS)			Capac. (MBh)	Power (AMPS)	Capac. (MBh)	Power (AMPS)
ED*4X48J**	*8MPV100	0.99	1.05	1.00	1.04	EHD4X48A**		0.97	1.09	0.97	1.15
ED*4X48J**	*8MPV125	0.99	1.04	1.00	1.03	EHD4X48A**	*9MVX040	0.97	1.08	0.98	1.06
ED*4X48J**	*9MPV050	0.97	1.08	0.98	1.06	EHD4X48A**	*9MVX060	0.98	1.07	0.98	1.04
ED*4X48J**	*9MPV075	0.97	1.07	0.98	1.06	EHD4X48A**	*9MVX080	1.00	1.07	1.00	1.05
ED*4X48J**	*9MPV100	0.99	1.05	0.99	1.04	EHD4X48A**	*9MVX100	0.99	1.04	0.99	1.03
ED*4X48J**	*9MPV125	0.99	1.04	0.99	1.04	EHD4X48A**	MV08B15**B*	0.98	1.01	0.99	1.02
ED*4X48J**		0.96	1.09	0.96	1.15	EHD4X48A**	MV12F19**B*	0.99	1.00	0.99	1.01
ED*4X48J**	*9MVX080	0.99	1.05	1.00	1.05	EHD4X48A**	MV16J22**B*	0.99	1.00	0.99	1.02
ED*4X48J**	MV16J22**B*	0.98	1.00	0.98	1.01	EHD4X48A**	MV20L24**B*	0.99	1.00	0.99	1.02
ED*4X48L**	*8MPV100	0.99	1.05	1.00	1.04	FVM4X24****		0.95	1.04	0.96	1.04
ED*4X48L**	*8MPV125	0.99	1.03	0.99	1.03	FVM4X36****		0.95	1.01	0.97	1.02
ED*4X48L**	*9MPV100	0.99	1.05	0.99	1.04	FVM4X48****		0.99	1.00	0.99	1.01
ED*4X48L**	*9MPV125	0.99	1.04	0.99	1.04						
<b>(C,H,T)4H548</b>											
>FVM4X60****		1.00	1.00	1.00	1.00	ED*4X60L**		0.97	1.06	0.97	1.11
ED*4X48F**		0.96	1.06	0.96	1.11	EHD4X48A**	*8MPV100	0.98	1.05	0.98	1.04
ED*4X48J**	*8MPV100	0.97	1.04	0.98	1.04	EHD4X48A**	*8MPV125	0.98	1.04	0.98	1.02
ED*4X48J**	*8MPV125	0.97	1.04	0.97	1.02	EHD4X48A**	*9MPV100	0.97	1.06	0.98	1.04
ED*4X48J**	*9MPV100	0.96	1.06	0.97	1.05	EHD4X48A**	*9MPV125	0.97	1.04	0.98	1.04
ED*4X48J**	*9MVX080	0.96	1.06	0.97	1.04	EHD4X48A**	*9MVX080	0.97	1.05	0.98	1.05
ED*4X48J**	MV16J22**B*	0.97	1.01	0.98	1.01	EHD4X48A**	*9MVX100	0.97	1.04	0.98	1.04
ED*4X48L**		0.95	1.06	0.95	1.11	EHD4X48A**	MV16J22**B*	0.98	1.00	0.98	1.01
ED*4X48L**	*9MPV125	0.96	1.04	0.97	1.04	EHD4X48A**	MV20L24**B*	0.98	1.01	0.98	1.01
ED*4X48L**	*9MVX100	0.96	1.04	0.97	1.04	EHD4X48A**		0.96	1.06	0.96	1.11
ED*4X48L**	MV20L24**B*	0.97	1.00	0.98	1.01	EHD4X60A**	*8MPV100	1.00	1.05	1.00	1.03

> Indicates Tested Indoor Model

- continued on next page -

**COOLING Multiplying Factors for other Indoor Combinations (continued)**

Indoor Model	Furnace Model	Low		High		Indoor Model	Furnace Model	Low		High	
		Capac. (MBh)	Power (AMPS)	Capac. (MBh)	Power (AMPS)			Capac. (MBh)	Power (AMPS)	Capac. (MBh)	Power (AMPS)
ED*4X48L**		0.95	1.06	0.95	1.11	EHD4X60A**	*8MPV125	1.00	1.04	0.99	1.02
ED*4X60J**	*8MPV100	0.99	1.04	1.00	1.03	EHD4X60A**	*9MPV100	0.99	1.06	0.99	1.04
ED*4X60J**	*8MPV125	0.99	1.03	0.99	1.02	EHD4X60A**	*9MPV125	0.99	1.05	0.99	1.03
ED*4X60J**	*9MPV100	0.99	1.06	0.99	1.04	EHD4X60A**	*9MVX080	0.99	1.06	1.00	1.04
ED*4X60J**	*9MVX080	0.99	1.06	0.99	1.04	EHD4X60A**	*9MVX100	0.99	1.05	0.99	1.03
ED*4X60J**	MV16J22**B*	0.99	1.00	0.99	1.00	EHD4X60A**	MV16J22**B*	0.99	1.00	0.99	1.00
ED*4X60J**		0.97	1.06	0.97	1.11	EHD4X60A**	MV20L24**B*	0.99	0.99	0.99	1.00
ED*4X60L**	*9MPV125	0.99	1.05	0.99	1.03	EHD4X60A**		0.98	1.07	0.97	1.11
ED*4X60L**	*9MVX100	0.98	1.04	0.99	1.03	FVM4X48****		0.98	1.00	0.99	1.01
ED*4X60L**	MV20L24**B*	0.99	1.00	0.99	1.00						
<b>(C,H,T)4H560</b>											
>FVM4X60****		1.00	1.00	1.00	1.00	ED*4X60L**		0.98	1.04	0.96	1.08
ED*4X60J**	*8MPV100	0.99	1.06	0.99	1.04	EHD4X60A**	*8MPV100	0.99	1.05	0.99	1.04
ED*4X60J**	*8MPV125	0.99	1.04	0.99	1.02	EHD4X60A**	*8MPV125	0.99	1.04	0.99	1.02
ED*4X60J**	*9MPV100	0.98	1.08	0.99	1.06	EHD4X60A**	*9MPV100	0.99	1.07	0.99	1.05
ED*4X60J**	*9MVX080	0.99	1.08	0.99	1.05	EHD4X60A**	*9MPV125	0.99	1.06	0.99	1.04
ED*4X60J**	MV16J22**B*	1.00	1.01	0.99	0.99	EHD4X60A**	*9MVX080	0.99	1.07	0.99	1.05
ED*4X60J**		0.98	1.04	0.96	1.08	EHD4X60A**	*9MVX100	0.99	1.06	0.99	1.04
ED*4X60L**	*9MPV125	0.98	1.07	0.98	1.04	EHD4X60A**	MV16J22**B*	1.00	1.00	0.99	0.99
ED*4X60L**	*9MVX100	0.98	1.06	0.98	1.03	EHD4X60A**	MV20L24**B*	1.00	1.00	0.99	0.99
ED*4X60L**	MV20L24**B*	0.99	1.00	0.99	1.00	EHD4X60A**		0.99	1.05	0.98	1.09

> Indicates Tested Indoor Model

HEATING Multiplying Factors for other Indoor Combinations															
Indoor Model	Furnace Model	Low			High			Indoor Model	Furnace Model	Low			High		
		Capac. (MBh)	Power (AMPS)	Power (AMPS)	Capac. (MBh)	Power (AMPS)	Power (AMPS)			Capac. (MBh)	Power (AMPS)	Power (AMPS)	Capac. (MBh)	Power (AMPS)	Power (AMPS)
<b>(C,H,T)4H524</b>															
>FV4X36****		1.00	1.00	1.00	1.00	1.00	1.00	ED*4X36J**		1.00	1.07	1.00	1.00	1.03	
ED*4X30B**	*8MPV050	1.01	1.03	1.06	1.02	1.06	1.01	EHD4X30A**	*8MPV050	1.01	1.02	1.02	1.02	1.06	
ED*4X30B**	MV08B15**B*	0.99	1.01	1.01	0.99	1.01	1.01	EHD4X30A**	*8MPV075	1.00	1.01	1.01	1.01	1.03	
ED*4X30B**		1.01	1.08	1.03	1.00	1.03	1.00	EHD4X30A**	*8MPV100	1.00	1.00	1.00	1.01	1.03	
ED*4X30F**	*8MPV075	1.00	1.00	1.03	1.01	1.03	1.01	EHD4X30A**	*8MPV125	1.01	1.00	1.01	1.01	1.03	
ED*4X30F**	*9MPV050	1.00	1.02	1.04	1.01	1.04	1.00	EHD4X30A**	*9MPV050	1.00	1.02	1.01	1.01	1.04	
ED*4X30F**	*9MPV075	1.00	1.01	1.04	1.01	1.04	1.00	EHD4X30A**	*9MPV075	1.00	1.02	1.01	1.01	1.04	
ED*4X30F**	*9MVX040	1.00	1.02	1.04	1.01	1.04	1.00	EHD4X30A**	*9MPV100	1.00	1.01	1.01	1.01	1.04	
ED*4X30F**	*9MVX060	1.00	1.01	1.04	1.01	1.04	1.00	EHD4X30A**	*9MPV125	1.00	1.00	1.01	1.01	1.03	
ED*4X30F**	MV12F19**B*	0.99	1.01	1.01	0.99	1.01	1.00	EHD4X30A**	*9MVX040	1.00	1.03	1.01	1.01	1.04	
ED*4X30F**		1.00	1.08	1.03	1.00	1.03	1.00	EHD4X30A**	*9MVX060	1.00	1.02	1.01	1.01	1.04	
ED*4X36B**	*8MPV050	1.01	1.02	1.06	1.02	1.06	1.01	EHD4X30A**	*9MVX080	1.01	1.01	1.01	1.01	1.03	
ED*4X36B**	*8MPV075	1.00	1.00	1.03	1.01	1.03	1.01	EHD4X30A**	*9MVX100	1.01	1.01	1.01	1.01	1.03	
ED*4X36B**	*9MPV050	1.00	1.01	1.04	1.01	1.04	1.00	EHD4X30A**	MV08B15**B*	0.99	1.01	1.00	1.00	1.01	
ED*4X36B**	*9MPV075	1.00	1.01	1.04	1.01	1.04	1.00	EHD4X30A**	MV12F19**B*	0.99	1.01	1.00	1.00	1.01	
ED*4X36B**	MV08B15**B*	0.99	1.00	1.01	1.00	1.01	1.00	EHD4X30A**		1.00	1.07	1.00	1.00	1.03	
ED*4X36B**		1.00	1.07	1.03	1.00	1.03	1.00	EHD4X36A**	*8MPV050	1.01	1.00	1.00	1.02	1.04	
ED*4X36F**	*8MPV050	1.01	1.01	1.05	1.02	1.05	1.01	EHD4X36A**	*8MPV075	1.01	0.99	1.01	1.01	1.02	
ED*4X36F**	*8MPV075	1.01	1.00	1.03	1.01	1.03	1.01	EHD4X36A**	*9MPV050	1.01	1.00	1.01	1.01	1.02	
ED*4X36F**	*8MPV100	1.01	0.99	1.02	1.01	1.02	1.01	EHD4X36A**	*9MPV075	1.01	1.00	1.00	1.02	1.03	
ED*4X36F**	*9MPV050	1.00	1.01	1.04	1.01	1.04	1.00	EHD4X36A**	*9MPV100	1.01	0.99	1.00	1.02	1.03	
ED*4X36F**	*9MPV075	1.01	1.02	1.04	1.01	1.04	1.01	EHD4X36A**	*9MPV125	1.01	0.98	1.01	1.01	1.02	
ED*4X36F**	*9MPV100	1.01	1.01	1.03	1.01	1.03	1.01	EHD4X36A**	*9MVX040	1.01	1.00	1.01	1.01	1.03	
ED*4X36F**	*9MVX040	1.00	1.01	1.04	1.01	1.04	1.00	EHD4X36A**	*9MVX060	1.01	1.00	1.01	1.02	1.03	
ED*4X36F**	*9MVX060	1.01	1.01	1.04	1.01	1.04	1.01	EHD4X36A**	*9MVX080	1.02	0.99	1.02	1.02	1.03	

> Indicates Tested Indoor Model  
 - continued on next page -

HEATING Multiplying Factors for other Indoor Combinations (continued)

Indoor Model	Furnace Model	Low		High		Indoor Model	Furnace Model	Low		High	
		Capac. (MBh)	Power (AMPS)	Capac. (MBh)	Power (AMPS)			Capac. (MBh)	Power (AMPS)	Capac. (MBh)	Power (AMPS)
ED*4X36F**	MV12F19**B*	0.99	1.00	1.00	1.01	EHD4X36A**	*9MVX100	1.01	0.98	1.01	1.02
ED*4X36F**		1.00	1.07	1.00	1.03	EHD4X36A**	MV08B15**B*	1.00	0.98	1.00	0.99
ED*4X36J**	*8MPV075	1.01	1.00	1.01	1.03	EHD4X36A**	MV12F19**B*	1.00	0.99	1.00	0.99
ED*4X36J**	*9MPV050	1.00	1.00	1.01	1.03	EHD4X36A**		1.01	1.05	1.01	1.02
ED*4X36J**	*9MPV075	1.01	1.01	1.01	1.03	FVM4X24****		0.99	0.97	0.98	0.94
<b>(C,H,T)4H736</b>											
>FVM4X60****		1.00	1.00	1.00	1.00	ED*4X48L**		1.00	1.10	1.02	1.16
ED*4X36B**	*8MPV050	1.00	1.16	1.00	1.12	ED*4X48L**	*9MVX100	1.02	1.05	1.01	1.03
ED*4X36B**		1.00	1.15	1.02	1.18	ED*4X48L**	MV20L24**B*	0.99	1.03	1.00	1.03
ED*4X36B**	MV08B15**B*	0.99	1.09	0.99	1.06	EHD4X36A**	*8MPV050	1.01	1.12	1.01	1.09
ED*4X36F**	*8MPV075	1.00	1.11	1.00	1.07	EHD4X36A**	*8MPV075	1.01	1.08	1.01	1.06
ED*4X36F**	*9MPV050	1.01	1.15	0.99	1.10	EHD4X36A**	*8MPV100	1.02	1.06	1.02	1.04
ED*4X36F**	*9MPV075	1.00	1.13	1.00	1.11	EHD4X36A**	*8MPV125	1.01	1.05	1.01	1.04
ED*4X36F**		1.00	1.15	1.02	1.18	EHD4X36A**	*9MPV050	1.02	1.12	1.00	1.08
ED*4X36F**	*9MVX040	1.01	1.15	0.99	1.11	EHD4X36A**	*9MPV075	1.01	1.10	1.01	1.09
ED*4X36F**	*9MVX060	1.01	1.13	0.98	1.09	EHD4X36A**	*9MPV100	1.02	1.07	1.01	1.05
ED*4X36F**	MV12F19**B*	0.98	1.07	0.98	1.04	EHD4X36A**	*9MPV125	1.01	1.06	1.01	1.05
ED*4X36J**	*8MPV100	1.01	1.07	1.01	1.04	EHD4X36A**		1.00	1.11	1.02	1.16
ED*4X36J**	*9MPV100	1.01	1.09	1.01	1.06	EHD4X36A**	*9MVX040	1.02	1.12	1.00	1.09
ED*4X36J**		1.00	1.15	1.02	1.18	EHD4X36A**	*9MVX060	1.02	1.09	0.99	1.08
ED*4X36J**	*9MVX060	1.01	1.09	1.01	1.06	EHD4X36A**	*9MVX080	1.02	1.07	1.02	1.05
ED*4X36J**	MV16J22**B*	0.98	1.06	0.98	1.04	EHD4X36A**	*9MVX100	1.01	1.07	1.01	1.05
ED*4X42F**	*8MPV075	1.00	1.09	1.01	1.07	EHD4X36A**	MV08B15**B*	1.00	1.06	1.00	1.04
ED*4X42F**	*9MPV050	1.00	1.12	1.00	1.09	EHD4X36A**	MV12F19**B*	0.99	1.04	0.99	1.03
ED*4X42F**	*9MPV075	1.00	1.11	1.00	1.09	EHD4X36A**	MV16J22**B*	0.99	1.04	1.00	1.04

> Indicates Tested Indoor Model

- continued on next page -

HEATING Multiplying Factors for other Indoor Combinations (continued)

Indoor Model	Furnace Model	Low		High		Indoor Model	Furnace Model	Low		High	
		Capac. (MBh)	Power (AMPS)	Capac. (MBh)	Power (AMPS)			Capac. (MBh)	Power (AMPS)	Capac. (MBh)	Power (AMPS)
ED*4X42F**		1.00	1.14	1.02	1.17	EHD4X36A**	MV20L24**B*	0.99	1.04	1.00	1.04
ED*4X42F**	*9MVX040	1.01	1.13	1.00	1.10	EHD4X42A**	*8MPV050	1.02	1.11	1.01	1.08
ED*4X42F**	*9MVX060	1.01	1.11	0.99	1.09	EHD4X42A**	*8MPV075	1.02	1.06	1.02	1.05
ED*4X42F**	MV12F19**B*	0.99	1.06	0.99	1.04	EHD4X42A**	*8MPV100	1.02	1.04	1.02	1.03
ED*4X42J**	*8MPV100	1.01	1.07	1.01	1.04	EHD4X42A**	*8MPV125	1.02	1.04	1.01	1.03
ED*4X42J**	*8MPV125	1.01	1.06	1.00	1.03	EHD4X42A**	*9MPV050	1.02	1.10	1.01	1.08
ED*4X42J**	*9MPV100	1.01	1.08	1.01	1.05	EHD4X42A**	*9MPV075	1.02	1.09	1.01	1.08
ED*4X42J**		1.00	1.14	1.02	1.17	EHD4X42A**	*9MPV100	1.02	1.06	1.02	1.04
ED*4X42J**	*9MVX080	1.01	1.07	1.01	1.05	EHD4X42A**	*9MPV125	1.02	1.04	1.02	1.04
ED*4X42J**	MV16J22**B*	0.99	1.06	0.99	1.04	EHD4X42A**		1.00	1.10	1.02	1.15
ED*4X42L**	*9MPV125	1.01	1.06	1.01	1.04	EHD4X42A**	*9MVX040	1.02	1.11	1.01	1.08
ED*4X42L**		1.00	1.14	1.02	1.17	EHD4X42A**	*9MVX060	1.02	1.08	1.00	1.08
ED*4X42L**	*9MVX100	1.01	1.07	1.00	1.04	EHD4X42A**	*9MVX080	1.02	1.05	1.02	1.04
ED*4X42L**	MV20L24**B*	0.99	1.05	0.99	1.05	EHD4X42A**	*9MVX100	1.01	1.05	1.01	1.04
ED*4X48F**	*8MPV050	1.02	1.11	1.02	1.08	EHD4X42A**	MV08B15**B*	1.00	1.04	1.00	1.03
ED*4X48F**	*8MPV075	1.02	1.06	1.02	1.04	EHD4X42A**	MV12F19**B*	1.00	1.03	1.00	1.03
ED*4X48F**	*8MPV100	1.03	1.04	1.02	1.02	EHD4X42A**	MV16J22**B*	1.00	1.03	1.00	1.03
ED*4X48F**	*8MPV125	1.02	1.03	1.02	1.03	EHD4X42A**	MV20L24**B*	1.00	1.03	1.00	1.03
ED*4X48F**	*9MPV050	1.02	1.10	1.01	1.07	EHD4X48A**	*8MPV050	1.02	1.10	1.02	1.08
ED*4X48F**	*9MPV075	1.02	1.08	1.02	1.07	EHD4X48A**	*8MPV075	1.02	1.06	1.02	1.05
ED*4X48F**	*9MPV100	1.02	1.05	1.02	1.03	EHD4X48A**	*8MPV100	1.02	1.04	1.02	1.02
ED*4X48F**		1.00	1.09	1.03	1.15	EHD4X48A**	*8MPV125	1.02	1.03	1.01	1.02
ED*4X48F**	*9MVX040	1.02	1.10	1.01	1.08	EHD4X48A**	*9MPV050	1.02	1.10	1.01	1.07
ED*4X48F**	*9MVX060	1.02	1.07	1.00	1.06	EHD4X48A**	*9MPV075	1.02	1.08	1.01	1.07
ED*4X48F**	MV12F19**B*	1.01	1.03	1.00	1.01	EHD4X48A**	*9MPV100	1.02	1.05	1.02	1.03
ED*4X48J**	*8MPV075	1.02	1.06	1.02	1.04	EHD4X48A**	*9MPV125	1.02	1.04	1.02	1.03

> Indicates Tested Indoor Model

- continued on next page -

HEATING Multiplying Factors for other Indoor Combinations (continued)

Indoor Model	Furnace Model	Low			High			Furnace Model	Low			High		
		Capac. (MBh)	Power (AMPS)	Power (AMPS)	Capac. (MBh)	Power (AMPS)	Power (AMPS)		Indoor Model	Capac. (MBh)	Power (AMPS)	Power (AMPS)	Capac. (MBh)	Power (AMPS)
ED*4X48J**	*8MPV100	1.02	1.04	1.02	1.02	1.02	EHD4X48A**		1.00	1.09	1.02	1.02	1.15	
ED*4X48J**	*8MPV125	1.02	1.03	1.02	1.02	1.02	EHD4X48A**	*9MVX040	1.02	1.10	1.01	1.01	1.08	
ED*4X48J**	*9MPV050	1.02	1.11	1.01	1.01	1.07	EHD4X48A**	*9MVX060	1.02	1.08	1.00	1.00	1.07	
ED*4X48J**	*9MPV075	1.02	1.09	1.01	1.01	1.07	EHD4X48A**	*9MVX080	1.03	1.05	1.02	1.02	1.04	
ED*4X48J**	*9MPV100	1.02	1.05	1.02	1.02	1.03	EHD4X48A**	*9MVX100	1.02	1.05	1.01	1.01	1.03	
ED*4X48J**	*9MPV125	1.02	1.04	1.02	1.02	1.03	EHD4X48A**	MV08B15**B*	1.01	1.04	1.00	1.00	1.03	
ED*4X48J**		1.00	1.10	1.02	1.02	1.16	EHD4X48A**	MV12F19**B*	1.00	1.03	1.00	1.00	1.02	
ED*4X48J**	*9MVX080	1.02	1.05	1.02	1.02	1.03	EHD4X48A**	MV16J22**B*	1.00	1.02	1.00	1.00	1.02	
ED*4X48J**	MV16J22**B*	0.99	1.03	1.00	1.00	1.03	EHD4X48A**	MV20L24**B*	1.00	1.03	1.00	1.00	1.03	
ED*4X48L**	*8MPV100	1.02	1.04	1.02	1.02	1.02	FVM4X24***		0.99	1.09	0.99	0.99	1.07	
ED*4X48L**	*8MPV125	1.02	1.03	1.01	1.01	1.02	FVM4X36***		0.98	1.07	0.98	0.98	1.05	
ED*4X48L**	*9MPV100	1.02	1.05	1.02	1.02	1.03	FVM4X48***		1.00	1.03	1.00	1.00	1.02	
ED*4X48L**	*9MPV125	1.02	1.04	1.02	1.02	1.03								
<b>(C,H,T)4H548</b>														
>FVM4X60****		1.00	1.00	1.00	1.00	1.00	ED*4X60L**		1.00	1.07	1.02	1.02	1.12	
ED*4X48F**		1.00	1.07	1.02	1.02	1.12	EHD4X48A**	*8MPV100	1.03	1.08	1.01	1.01	1.04	
ED*4X48J**	*8MPV100	1.02	1.08	1.01	1.01	1.05	EHD4X48A**	*8MPV125	1.02	1.07	1.00	1.00	1.04	
ED*4X48J**	*8MPV125	1.02	1.07	1.00	1.00	1.04	EHD4X48A**	*9MPV100	1.03	1.10	1.01	1.01	1.06	
ED*4X48J**	*9MPV100	1.03	1.10	1.01	1.01	1.06	EHD4X48A**	*9MPV125	1.03	1.09	1.01	1.01	1.05	
ED*4X48J**	*9MVX080	1.02	1.09	1.01	1.01	1.06	EHD4X48A**	*9MVX080	1.02	1.08	1.01	1.01	1.05	
ED*4X48J**	MV16J22**B*	1.01	1.05	0.99	0.99	1.03	EHD4X48A**	*9MVX100	1.02	1.08	1.01	1.01	1.06	
ED*4X48J**		1.00	1.09	1.02	1.02	1.13	EHD4X48A**	MV16J22**B*	1.01	1.04	1.00	1.00	1.02	
ED*4X48L**	*9MPV125	1.02	1.08	1.01	1.01	1.05	EHD4X48A**	MV20L24**B*	1.01	1.04	1.00	1.00	1.02	
ED*4X48L**	*9MPV100	1.02	1.09	1.00	1.00	1.05	EHD4X48A**		1.00	1.08	1.02	1.02	1.12	
ED*4X48L**	MV20L24**B*	1.01	1.05	0.99	0.99	1.02	EHD4X60A**	*8MPV100	1.03	1.05	1.01	1.01	1.03	

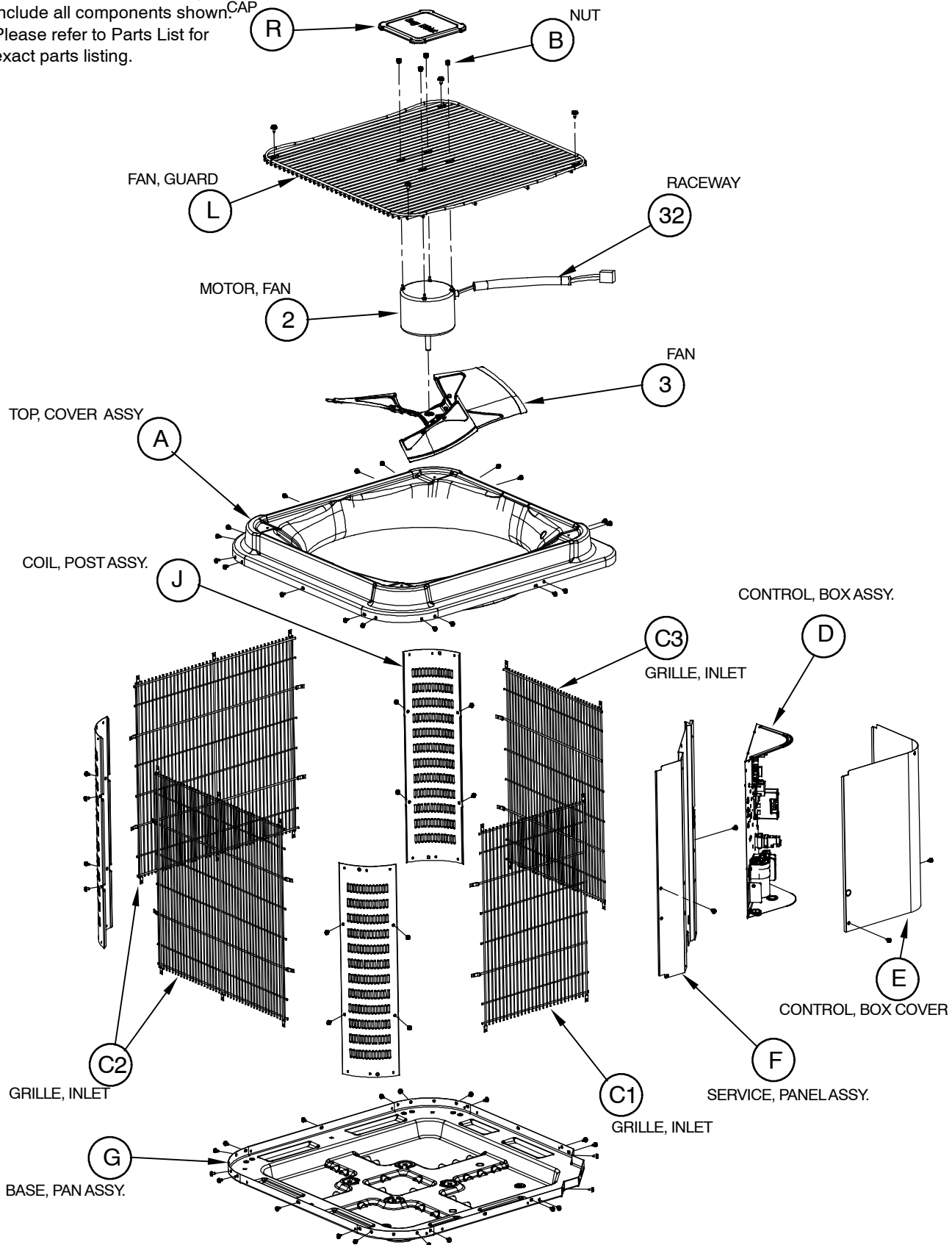
> Indicates Tested Indoor Model

- continued on next page -

HEATING Multiplying Factors for other Indoor Combinations (continued)													
Indoor Model	Furnace Model	Low			High			Indoor Model	Furnace Model	Low			High
		Capac. (MBh)	Power (AMPS)	Power (AMPS)	Capac. (MBh)	Power (AMPS)	Power (AMPS)			Capac. (MBh)	Power (AMPS)	Power (AMPS)	
ED*4X48L**		1.00	1.09	1.13	1.02	1.02	EHD4X60A**	*8MPV125	1.03	1.05	1.02	1.01	
ED*4X60J**	*8MPV100	1.02	1.06	1.03	1.01	1.01	EHD4X60A**	*9MPV100	1.03	1.07	1.04	1.01	
ED*4X60J**	*8MPV125	1.02	1.05	1.02	1.01	1.01	EHD4X60A**	*9MPV125	1.03	1.07	1.03	1.01	
ED*4X60J**	*9MPV100	1.02	1.07	1.04	1.01	1.01	EHD4X60A**	*9MVX080	1.02	1.06	1.04	1.01	
ED*4X60J**	*9MVX080	1.02	1.07	1.04	1.02	1.02	EHD4X60A**	*9MVX100	1.02	1.06	1.03	1.01	
ED*4X60J**	MV16J22**B*	1.01	1.03	1.01	1.00	1.00	EHD4X60A**	MV16J22**B*	1.02	1.04	1.01	1.01	
ED*4X60J**		1.00	1.07	1.12	1.02	1.02	EHD4X60A**	MV20L24**B*	1.02	1.03	1.01	1.01	
ED*4X60L**	*9MPV125	1.02	1.07	1.04	1.01	1.01	EHD4X60A**		1.00	1.07	1.11	1.01	
ED*4X60L**	*9MVX100	1.02	1.07	1.04	1.01	1.01	FVM4X48***		1.00	1.04	1.03	1.01	
ED*4X60L**	MV20L24**B*	1.01	1.03	1.02	1.00	1.00							
<b>(C,H,T)4H560</b>													
>FVM4X60****		1.00	1.00	1.00	1.00	1.00	ED*4X60L**		1.00	1.05	1.01	1.09	
ED*4X60J**	*8MPV100	1.01	1.06	1.04	1.01	1.01	EHD4X60A**	*8MPV100	1.02	1.05	1.01	1.03	
ED*4X60J**	*8MPV125	1.00	1.04	1.03	1.00	1.00	EHD4X60A**	*8MPV125	1.02	1.04	1.00	1.02	
ED*4X60J**	*9MPV100	1.01	1.07	1.06	1.01	1.01	EHD4X60A**	*9MPV100	1.03	1.07	1.01	1.05	
ED*4X60J**	*9MVX080	1.01	1.07	1.05	1.01	1.01	EHD4X60A**	*9MPV125	1.02	1.06	1.01	1.04	
ED*4X60J**	MV16J22**B*	0.99	1.01	1.00	0.99	0.99	EHD4X60A**	*9MVX080	1.03	1.07	1.01	1.04	
ED*4X60J**		1.00	1.05	1.09	1.01	1.01	EHD4X60A**	*9MVX100	1.02	1.05	1.01	1.04	
ED*4X60L**	*9MPV125	1.01	1.07	1.04	1.00	1.00	EHD4X60A**	MV16J22**B*	1.01	1.01	1.00	1.01	
ED*4X60L**	*9MVX100	1.01	1.07	1.04	1.00	1.00	EHD4X60A**	MV20L24**B*	1.01	1.01	1.00	1.00	
ED*4X60L**	MV20L24**B*	0.99	1.01	1.00	0.99	0.99	EHD4X60A**		1.02	1.05	1.01	1.08	

> Indicates Tested Indoor Model

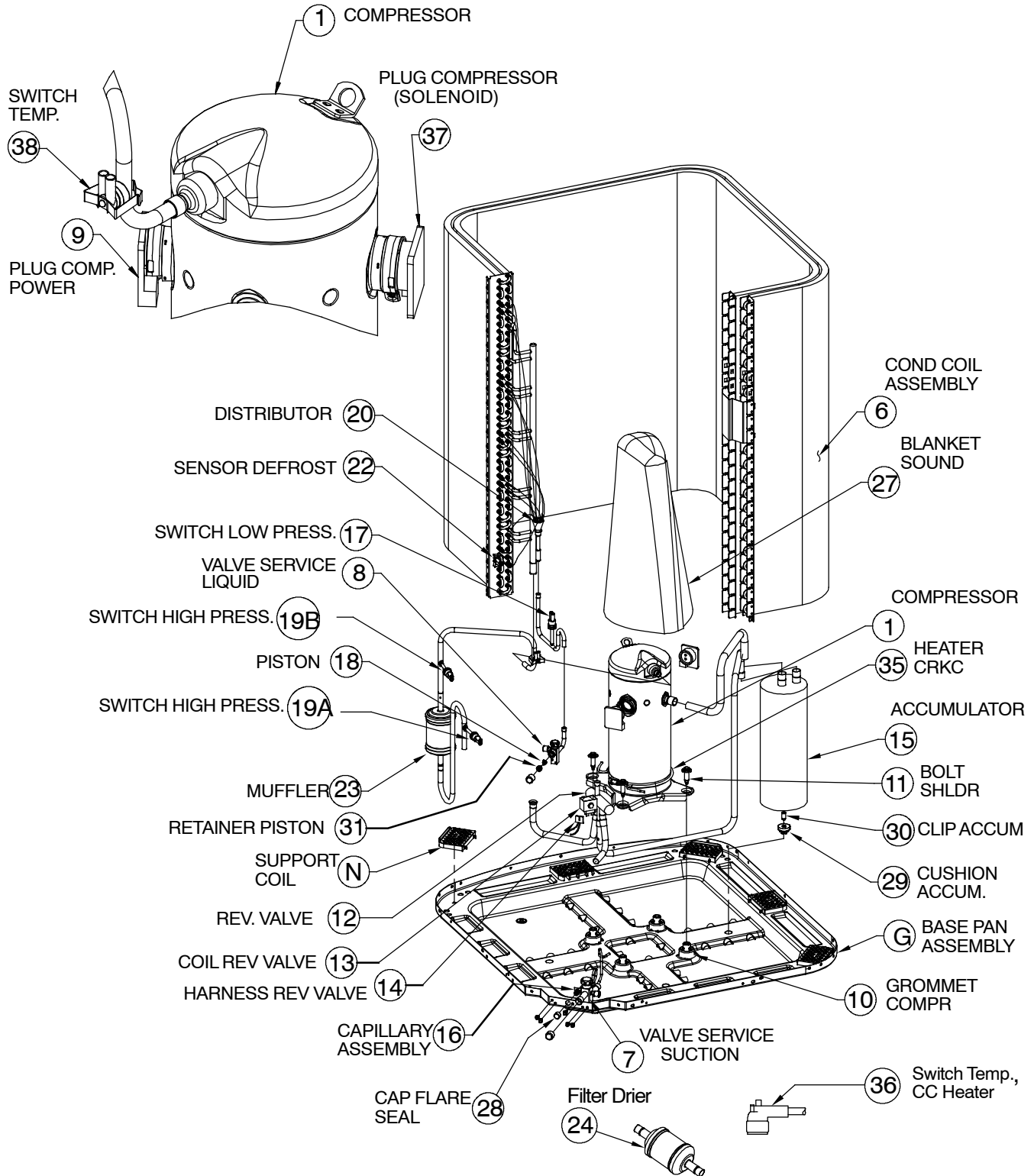
NOTE: This illustration is for reference only. Your unit may differ in appearance or may not include all components shown. Please refer to Parts List for exact parts listing.



H4H(5,7)\*\*GKD100  
cabinet

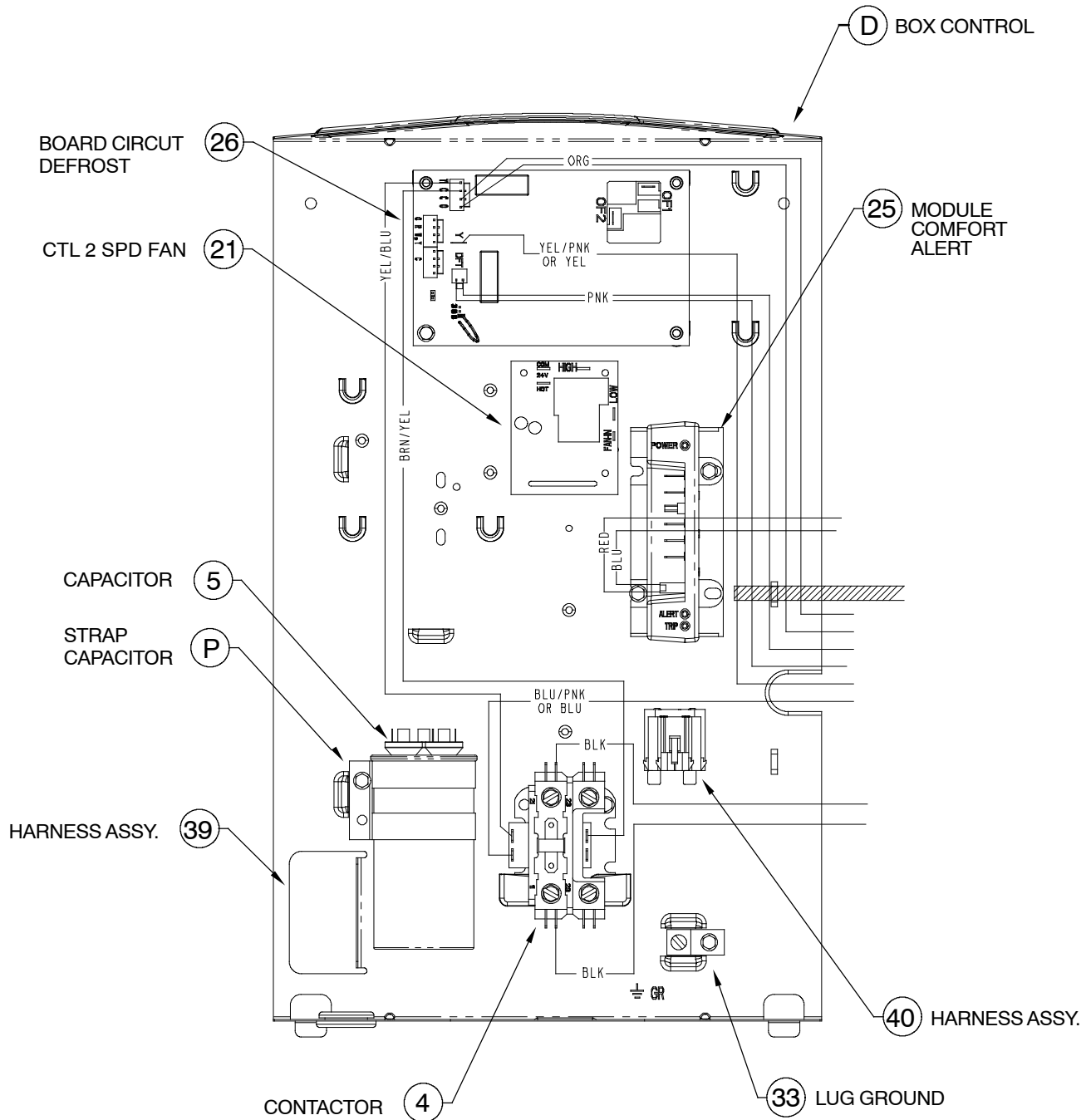


NOTE: This illustration is for reference only. Your unit may differ in appearance or may not include all components shown. Please refer to Parts List for exact parts listing.



H4H(5,7)\*\*GKD100  
refrig components

NOTE: This illustration is for reference only. Your unit may differ in appearance or may not include all components shown. Please refer to Parts List for exact parts listing.



H4H(5,7)\*\*GKD100 control box

C4H(5,7) PARTS LIST						
KEY NO.	DESCRIPTION	PART NO.	C4H524GKD100	C4H736GKD100	C4H548GKD100	C4H560GKD100
1	Compressor ZPS20K4E-PFV-130	ZPS20K4EPFV130	1	-	-	-
1	ZPS30K4E-PFV-130	ZPS30K4EPFV130	-	1	-	-
1	ZPS40K4E-PFV-130	ZPS40K4EPFV130	-	-	1	-
1	ZPS51K4E-PFV-130	ZPS51K4EPFV130	-	-	-	1
2	Motor, Condenser Fan 1/10 HP	1173774	1	1	-	-
2	1/4 HP	1173779	-	-	1	1
3	Fan Blade, 26" Dia.	1173790	1	1	-	-
3		1172716	-	-	1	1
4	Contactora, 30 Amp	1172472	1	1	1	-
4	40 Amp	1172786	-	-	-	1
5	Capacitor, 370V 35+5 MFD	1172110	1	-	-	-
5	370V 40+5 MFD	1172147	-	1	-	-
5	370V 45+7.5 MFD	1172291	-	-	1	-
5	370V 80+7.5 MFD	1172296	-	-	-	1
6	Condenser Coil	1178642	1	-	-	-
6		1174093	-	1	1	1
7	Service Valve, Suction	1172725	1	-	-	-
7		1172726	-	1	-	-
7		1172727	-	-	1	1
8	Service Valve, Liquid	1173629	1	1	1	1
9	Plug, Compressor Harness	1174685	1	1	1	-
9		1174686	-	-	-	1
10	Grommet, Compressor	1171270	4	4	4	4
11	Bolt, Compressor Mounting	1173630	4	4	4	4
12	Valve, Reversing with 24V Coil	1173715	1	-	-	-
12		1175622	-	1	1	1
13	Coil, Rev. Valve 24V	1172574	1	1	1	1
14	Harness Assy., Rev. Valve Coil	1173988	1	1	1	1
15	Accumulator	1174702	1	-	-	-
15		1174703	-	1	-	-
15		1172313	-	-	1	1
16	Capillary Assy.	1174096	1	-	-	-
16		1174096	-	1	1	1
17	Switch, Low Pressure	1177594	1	1	1	1
18	Piston, .040	1173990	1	-	-	-
18	.059	1173871	-	1	-	-
18	.061	1173663	-	-	1	-
18	.067	1173867	-	-	-	1
19a	Switch, High Pressure	1177826	1	1	1	1
19b	Switch, High Pressure	1175138	1	1	1	1
20	Distributor	1174007	1	1	1	1
21	Control, 2 Speed Fan	1088977	1	1	1	1
22	Sensor, Defrost	1173637	1	1	1	1
23	Muffler	1177828	1	1	1	1
24	Drier	1174010	1	1	1	1

- continued on next page -

C4H(5,7) PARTS LIST (continued)						
KEY NO.	DESCRIPTION	PART NO.	C4H524GKD100	C4H736GKD100	C4H548GKD100	C4H560GKD100
25	Module, Ultratech Control Alert	1178623	1	1	1	1
26	Board, Defrost Control	1173636	1	1	1	1
27	Blanket, Compressor Sound	1175144	1	1	1	-
27		1176272	-	-	-	1
28	Cap Flare	1172410	1	1	1	1
29	Cushion, Accumulator	1172806	1	1	1	1
30	Clip, Accumulator	1173640	1	1	1	1
31	Retainer, Piston	1173641	1	1	1	1
32	Raceway	1175919	1	1	1	1
33	Lug, Ground	1172300	1	1	1	1
35	Heater, Crankcase 40W 240V	1173944	1	1	1	-
35		1173670	-	-	-	1
36	Switch, Temp. CC Htr.	1173669	1	1	1	1
37	Plug, Compressor Solenoid	1175690	1	1	1	1
38	Switch, Temp Discharge	1178621	1	1	1	1
39	Harness Assy, Ultratech HP	1178622	1	1	1	1
40	Harness Assy, Plug & Play	1173920	1	1	1	-
40		1173951	-	-	-	1
)	Adapter Assy.	1174192	1	1	1	1
)	Washer, Teflon	1174012	1	1	1	1
)	Cap Service Kit 11/16-20	1175650	1	1	1	1
)	Cap Service Kit 1 1/16-20	1175652	1	1	1	1
A	Panel, Top	1177471	1	1	1	1
B	Nut, Hex #8-32 Motor Mounting	1172217	1	1	1	1
C1	Grille Inlet	1177723	1	-	-	-
C1		1177476	-	1	1	1
C2	Grille Inlet	1176420	2	-	-	-
C2		1176673	-	2	2	2
C3	Grille, Inlet	1177724	1	-	-	-
C3		1177477	-	1	1	1
D	Box, Control	1173643	1	1	1	1
E	Cover, Control Box	1175141	1	-	-	-
E		1175156	-	1	-	-
E		1175142	-	-	1	-
E		1175143	-	-	-	1
F	Panel, Service	1174080	1	-	-	-
F		1174077	-	1	1	1
G	Pan, Base	1177470	1	1	1	1
J	Post, Corner	1175930	3	-	-	-
J		1175931	-	3	3	3
L	Guard, Fan	1173934	1	1	1	1
N	Support, Coil	1174068	5	5	5	5
P	Strap, Capacitor	1172734	1	1	1	-
P		1172735	-	-	-	1
R	Cap Assy, Comfortmaker	1175140	1	1	1	1

- continued on next page -

C4H(5,7) PARTS LIST (continued)						
KEY NO.	DESCRIPTION	PART NO.	C4H524GKD100	C4H736GKD100	C4H548GKD100	C4H560GKD100
) (	Paint Touch-up	1174415	1	1	1	1
) (	Piston Tool Re-sizer Kit	1175477	1	1	1	1
) (	Screw Hex Head #10 X 3/8" Gray	1174676	27	27	27	27
) (	Screw Hex Head #10 X 1/2" Gray	1174677	20	20	20	20
) (	Screw Hex Head #12 X 5/8" Gray	1174678	4	4	4	4

H4H(5,7) PARTS LIST						
KEY NO.	DESCRIPTION	PART NO.	H4H524GKD100	H4H736GKD100	H4H548GKD100	H4H560GKD100
1	Compressor ZPS20K4E-PFV-130	ZPS20K4EPFV130	1	-	-	-
1	ZPS30K4E-PFV-130	ZPS30K4EPFV130	-	1	-	-
1	ZPS40K4E-PFV-130	ZPS40K4EPFV130	-	-	1	-
1	ZPS51K4E-PFV-130	ZPS51K4EPFV130	-	-	-	1
2	Motor, Condenser Fan 1/10 HP	1173774	1	1	-	-
2	1/4 HP	1173779	-	-	1	1
3	Fan Blade, 26" Dia.	1173790	1	1	-	-
3		1172716	-	-	1	1
4	Contactora, 30 Amp	1172472	1	1	1	-
4	40 Amp	1172786	-	-	-	1
5	Capacitor, 370V 35+5 MFD	1172110	1	-	-	-
5	370V 40+5 MFD	1172147	-	1	-	-
5	370V 45+7.5 MFD	1172291	-	-	1	-
5	370V 80+7.5 MFD	1172296	-	-	-	1
6	Condenser Coil	1178642	1	-	-	-
6		1174093	-	1	1	1
7	Service Valve, Suction	1172725	1	-	-	-
7		1172726	-	1	-	-
7		1172727	-	-	1	1
8	Service Valve, Liquid	1173629	1	1	1	1
9	Plug, Compressor Harness	1174685	1	1	1	-
9		1174686	-	-	-	1
10	Grommet, Compressor	1171270	4	4	4	4
11	Bolt, Compressor Mounting	1173630	4	4	4	4
12	Valve, Reversing with 24V Coil	1173715	1	-	-	-
12		1175622	-	1	1	1
13	Coil, Rev. Valve 24V	1172574	1	1	1	1
14	Harness Assy., Rev. Valve Coil	1173988	1	1	1	1
15	Accumulator	1174702	1	-	-	-
15		1174703	-	1	-	-
15		1172313	-	-	1	1
16	Capillary Assy.	1174096	1	-	-	-
16		1174096	-	1	1	1
17	Switch, Low Pressure	1177594	1	1	1	1
18	Piston, .040	1173990	1	-	-	-
18	.059	1173871	-	1	-	-
18	.061	1173663	-	-	1	-
18	.067	1173867	-	-	-	1
19a	Switch, High Pressure	1177826	1	1	1	1
19b	Switch, High Pressure	1175138	1	1	1	1
20	Distributor	1174007	1	1	1	1
21	Control, 2 Speed Fan	1088977	1	1	1	1
22	Sensor, Defrost	1173637	1	1	1	1
23	Muffler	1177828	1	1	1	1
24	Drier	1174010	1	1	1	1

- continued on next page -

H4H(5,7) PARTS LIST (continued)						
KEY NO.	DESCRIPTION	PART NO.	H4H524GKD100	H4H736GKD100	H4H548GKD100	H4H560GKD100
25	Module, Ultratech Control Alert	1178623	1	1	1	1
26	Board, Defrost Control	1173636	1	1	1	1
27	Blanket, Compressor Sound	1175144	1	1	1	-
27		1176272	-	-	-	1
28	Cap Flare	1172410	1	1	1	1
29	Cushion, Accumulator	1172806	1	1	1	1
30	Clip, Accumulator	1173640	1	1	1	1
31	Retainer, Piston	1173641	1	1	1	1
32	Raceway	1175919	1	1	1	1
33	Lug, Ground	1172300	1	1	1	1
35	Heater, Crankcase 40W 240V	1173944	1	1	1	-
35		1173670	-	-	-	1
36	Switch, Temp. CC Htr.	1173669	1	1	1	1
37	Plug, Compressor Solenoid	1175690	1	1	1	1
38	Switch, Temp Discharge	1178621	1	1	1	1
39	Harness Assy, Ultratech HP	1178622	1	1	1	1
40	Harness Assy, Plug & Play	1173920	1	1	1	-
40		1173951	-	-	-	1
)	Adapter Assy.	1174192	1	1	1	1
)	Washer, Teflon	1174012	1	1	1	1
)	Cap Service Kit 11/16-20	1175650	1	1	1	1
)	Cap Service Kit 1 1/16-20	1175652	1	1	1	1
A	Panel, Top	1177489	1	1	1	1
B	Nut, Hex #8-32 Motor Mounting	1172217	1	1	1	1
C1	Grille Inlet	1177733	1	-	-	-
C1		1177491	-	1	1	1
C2	Grille Inlet	1175797	2	-	-	-
C2		1176702	-	2	2	2
C3	Grille, Inlet	1177734	1	-	-	-
C3		1177494	-	1	1	1
D	Box, Control	1173643	1	1	1	1
E	Cover, Control Box	1175141	1	-	-	-
E		1175156	-	1	-	-
E		1175142	-	-	1	-
E		1175143	-	-	-	1
F	Panel, Service	1174080	1	-	-	-
F		1174077	-	1	1	1
G	Pan, Base	1177470	1	1	1	1
J	Post, Corner	1175811	3	-	-	-
J		1175812	-	3	3	3
L	Guard, Fan	1174032	1	1	1	1
N	Support, Coil	1174068	5	5	5	5
P	Strap, Capacitor	1172734	1	1	1	-
P		1172735	-	-	-	1
R	Cap Assy, Heil	1175157	1	1	1	1

- continued on next page -

H4H(5,7) PARTS LIST (continued)						
KEY NO.	DESCRIPTION	PART NO.	H4H524GKD100	H4H736GKD100	H4H548GKD100	H4H560GKD100
) (	Paint Touch-up	1174415	1	1	1	1
) (	Piston Tool Re-sizer Kit	1175477	1	1	1	1
) (	Screw Hex Head #10 X 3/8" Gray	1174676	27	27	27	27
) (	Screw Hex Head #10 X 1/2" Gray	1174677	20	20	20	20
) (	Screw Hex Head #12 X 5/8" Gray	1174678	4	4	4	4



T4H(5,7) PARTS LIST						
KEY NO.	DESCRIPTION	PART NO.	T4H524GKD100	T4H736GKD100	T4H548GKD100	T4H560GKD100
1	Compressor ZPS20K4E-PFV-130	ZPS20K4EPFV130	1	-	-	-
1	ZPS30K4E-PFV-130	ZPS30K4EPFV130	-	1	-	-
1	ZPS40K4E-PFV-130	ZPS40K4EPFV130	-	-	1	-
1	ZPS51K4E-PFV-130	ZPS51K4EPFV130	-	-	-	1
2	Motor, Condenser Fan 1/10 HP	1173774	1	1	-	-
2	1/4 HP	1173779	-	-	1	1
3	Fan Blade, 26" Dia.	1173790	1	1	-	-
3		1172716	-	-	1	1
4	Contactora, 30 Amp	1172472	1	1	1	-
4	40 Amp	1172786	-	-	-	1
5	Capacitor, 370V 35+5 MFD	1172110	1	-	-	-
5	370V 40+5 MFD	1172147	-	1	-	-
5	370V 45+7.5 MFD	1172291	-	-	1	-
5	370V 80+7.5 MFD	1172296	-	-	-	1
6	Condenser Coil	1178642	1	-	-	-
6		1174093	-	1	1	1
7	Service Valve, Suction	1172725	1	-	-	-
7		1172726	-	1	-	-
7		1172727	-	-	1	1
8	Service Valve, Liquid	1173629	1	1	1	1
9	Plug, Compressor Harness	1174685	1	1	1	-
9		1174686	-	-	-	1
10	Grommet, Compressor	1171270	4	4	4	4
11	Bolt, Compressor Mounting	1173630	4	4	4	4
12	Valve, Reversing with 24V Coil	1173715	1	-	-	-
12		1175622	-	1	1	1
13	Coil, Rev. Valve 24V	1172574	1	1	1	1
14	Harness Assy., Rev. Valve Coil	1173988	1	1	1	1
15	Accumulator	1174702	1	-	-	-
15		1174703	-	1	-	-
15		1172313	-	-	1	1
16	Capillary Assy.	1174096	1	-	-	-
16		1174096	-	1	1	1
17	Switch, Low Pressure	1177594	1	1	1	1
18	Piston, .040	1173990	1	-	-	-
18	.059	1173871	-	1	-	-
18	.061	1173663	-	-	1	-
18	.067	1173867	-	-	-	1
19a	Switch, High Pressure	1177826	1	1	1	1
19b	Switch, High Pressure	1175138	1	1	1	1
20	Distributor	1174007	1	1	1	1
21	Control, 2 Speed Fan	1088977	1	1	1	1
22	Sensor, Defrost	1173637	1	1	1	1
23	Muffler	1177828	1	1	1	1
24	Drier	1174010	1	1	1	1

- continued on next page -

T4H(5,7) PARTS LIST (continued)						
KEY NO.	DESCRIPTION	PART NO.	T4H524GKD100	T4H736GKD100	T4H548GKD100	T4H560GKD100
25	Module, Ultratech Control Alert	1178623	1	1	1	1
26	Board, Defrost Control	1173636	1	1	1	1
27	Blanket, Compressor Sound	1175144	1	1	1	-
27		1176272	-	-	-	1
28	Cap Flare	1172410	1	1	1	1
29	Cushion, Accumulator	1172806	1	1	1	1
30	Clip, Accumulator	1173640	1	1	1	1
31	Retainer, Piston	1173641	1	1	1	1
32	Raceway	1175919	1	1	1	1
33	Lug, Ground	1172300	1	1	1	1
35	Heater, Crankcase 40W 240V	1173944	1	1	1	-
35		1173670	-	-	-	1
36	Switch, Temp. CC Htr.	1173669	1	1	1	1
37	Plug, Compressor Solenoid	1175690	1	1	1	1
38	Switch, Temp Discharge	1178621	1	1	1	1
39	Harness Assy, Ultratech HP	1178622	1	1	1	1
40	Harness Assy, Plug & Play	1173920	1	1	1	-
40		1173951	-	-	-	1
)	Adapter Assy.	1174192	1	1	1	1
)	Washer, Teflon	1174012	1	1	1	1
)	Cap Service Kit 11/16-20	1175650	1	1	1	1
)	Cap Service Kit 1 1/16-20	1175652	1	1	1	1
A	Panel, Top	1177471	1	1	1	1
B	Nut, Hex #8-32 Motor Mounting	1172217	1	1	1	1
C1	Grille Inlet	1177795	1	-	-	-
C1		1177575	-	1	1	1
C2	Grille Inlet	1176446	2	-	-	-
C2		1176717	-	2	2	2
C3	Grille, Inlet	1177796	1	-	-	-
C3		1177578	-	1	1	1
D	Box, Control	1173643	1	1	1	1
E	Cover, Control Box	1175141	1	-	-	-
E		1175156	-	1	-	-
E		1175142	-	-	1	-
E		1175143	-	-	-	1
F	Panel, Service	1174080	1	-	-	-
F		1174077	-	1	1	1
G	Pan, Base	1177470	1	1	1	1
J	Post, Corner	1175936	3	-	-	-
J		1175937	-	3	3	3
L	Guard, Fan	1177572	1	1	1	1
N	Support, Coil	1174068	5	5	5	5
P	Strap, Capacitor	1172734	1	1	1	-
P		1172735	-	-	-	1
R	Cap Assy, Tempstar	1175158	1	1	1	1

- continued on next page -

T4H(5,7) PARTS LIST (continued)						
KEY NO.	DESCRIPTION	PART NO.	T4H524GKD100	T4H736GKD100	T4H548GKD100	T4H560GKD100
) (	Paint Touch-up	1174415	1	1	1	1
) (	Piston Tool Re-sizer Kit	1175477	1	1	1	1
) (	Screw Hex Head #10 X 3/8" Gray	1174676	27	27	27	27
) (	Screw Hex Head #10 X 1/2" Gray	1174677	20	20	20	20
) (	Screw Hex Head #12 X 5/8" Gray	1174678	4	4	4	4

<b>OUTDOOR UNIT MODEL NUMBER IDENTIFICATION GUIDE (single phase)</b>											
Digit Position:	1	2	3	4	5, 6	7	8	9	10	11	12
Example Part Number:	<b>H</b>	<b>4</b>	<b>H</b>	<b>5</b>	<b>24</b>	<b>G</b>	<b>K</b>	<b>D</b>	<b>1</b>	<b>0</b>	<b>0</b>
Product Family											
2 = R-22											
4 = R-410A											
<b>REFRIGERANT</b>											
A = Air Conditioner											
H = Heat Pump											
<b>TYPE</b>											
4 = 14 SEER											
5 = 15 SEER											
6 = 16 SEER											
7 = 17 SEER											
8 = 18 SEER											
<b>NOMINAL EFFICIENCY</b>											
24 = 24,000 BTUH = 2 tons											
36 = 36,000 BTUH = 3 tons											
48 = 48,000 BTUH = 4 tons											
60 = 60,000 BTUH = 5 tons											
<b>NOMINAL CAPACITY</b>											
A = Standard Grille											
G = Coil Guard Grille											
<b>FEATURES</b>											
K = 208/230-1-60											
<b>VOLTAGE</b>											
Sales Code											
Engineering Revision											
Extra Digit											
Extra Digit											

<b>ACCESSORIES PART NUMBER IDENTIFICATION GUIDE</b>									
Digit Position:	1	2	3	4	5	6, 7	8, 9	10, 11	
Example Part Number:	<b>N</b>	<b>A</b>	<b>S</b>	<b>A</b>	<b>0</b>	<b>01</b>	<b>01</b>	<b>CH</b>	
N = Non-Branded									
<b>BRANDING</b>									
A = Accessory									
<b>PRODUCT GROUP</b>									
S = Split System (AC & HP)									
<b>KIT USAGE</b>									
A = Original									
B = 2nd Generation									
<b>MAJOR SERIES</b>									
0 = Generic or Not Applicable									
2 = R-22									
4 = R-410A									
<b>REFRIGERANT</b>									
Product Identifier Number									
Package Quantity									
Type of Kit (Example: CH = Crankcase Heater)									