

# TECHNICAL SUPPORT MANUAL

## Split System Heat Pump

### R2HM, R2H3, WCH3\*\*2

#### Safety Labeling and Signal Words

##### DANGER, WARNING, CAUTION, and NOTE

The signal words **DANGER**, **WARNING**, **CAUTION**, and **NOTE** are used to identify levels of hazard seriousness. The signal word **DANGER** is only used on product labels to signify an immediate hazard. The signal words **WARNING**, **CAUTION**, and **NOTE** will be used on product labels and throughout this manual and other manuals that may apply to the product.

**DANGER** – Immediate hazards which **will** result in severe personal injury or death.

**WARNING** – Hazards or unsafe practices which **could** result in severe personal injury or death.

**CAUTION** – Hazards or unsafe practices which **may** result in minor personal injury or product or property damage.

**NOTE** – Used to highlight suggestions which **will** result in enhanced installation, reliability, or operation.

##### Signal Words in Manuals

The signal word **WARNING** is used throughout this manual in the following manner:



The signal word **CAUTION** is used throughout this manual in the following manner:



##### Signal Words on Product Labeling

Signal words are used in combination with colors and/or pictures on product labels.

#### TABLE OF CONTENTS

Model Number Identification .....	2 – 3
Wiring Diagrams .....	4 – 7
Charging Chart .....	8
Tech Labels (Expanded Data) .....	9 – 16
R2HM Cooling and Heating Multiplying Factors ....	17
R2H3 Cooling Multiplying Factors .....	18 – 19
R2H3 Heating Multiplying Factors .....	20 – 21
WCH3**2 Cooling and Heating Multiplying Factors .	22
Exploded Drawings .....	23
R2HM Parts List .....	24 – 27
R2H3 Parts List .....	28 – 29
WCH3**2 Parts List .....	30– 31



##### DEATH, PERSONAL INJURY, AND/OR PROPERTY DAMAGE HAZARD

Failure to carefully read and follow this warning could result in equipment malfunction, property damage, personal injury and/or death.

Installation or repairs made by unqualified persons could result in equipment malfunction, property damage, personal injury and/or death.

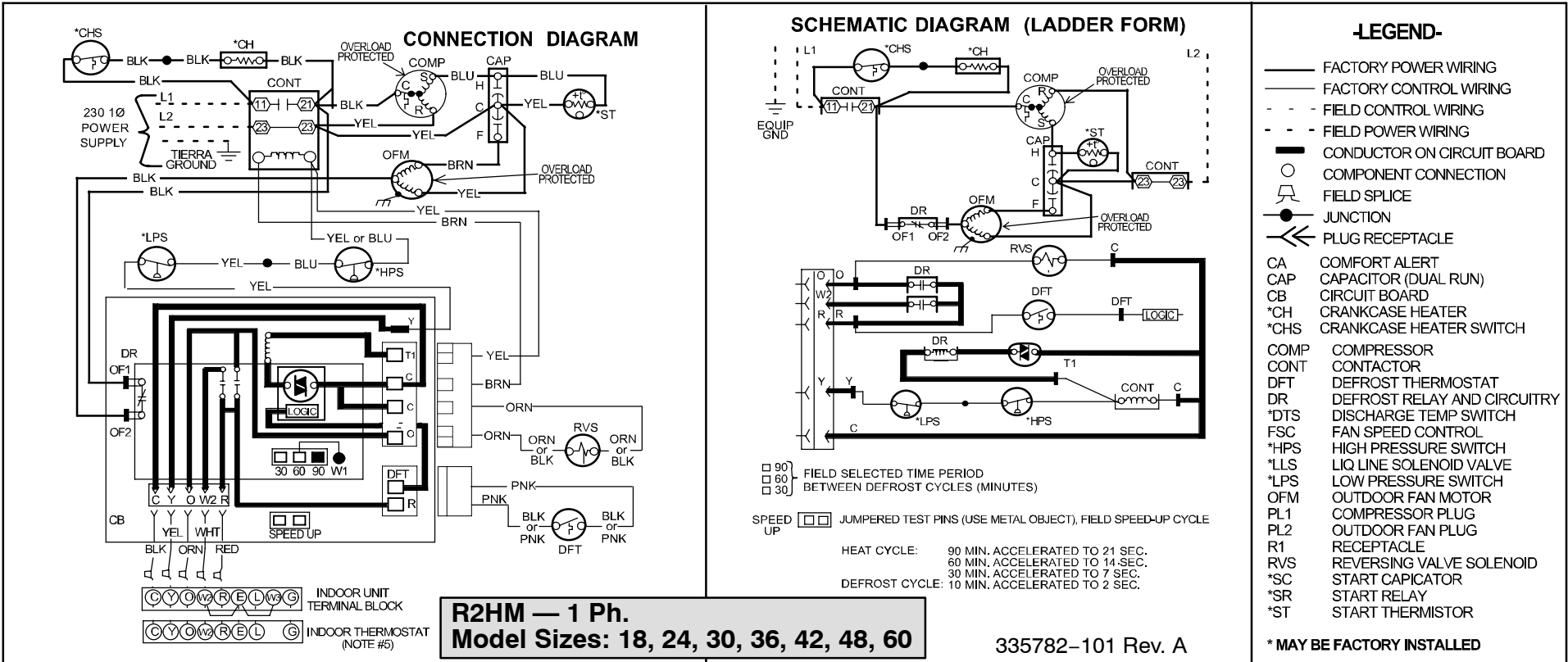
The information contained in this manual is intended for use by a qualified service technician familiar with safety procedures and equipped with the proper tools and test instruments.

Installation must conform with local building codes and with the National Electrical Code NFPA70 current edition or Canadian Electrical Code Part 1 CSA C.22.1.

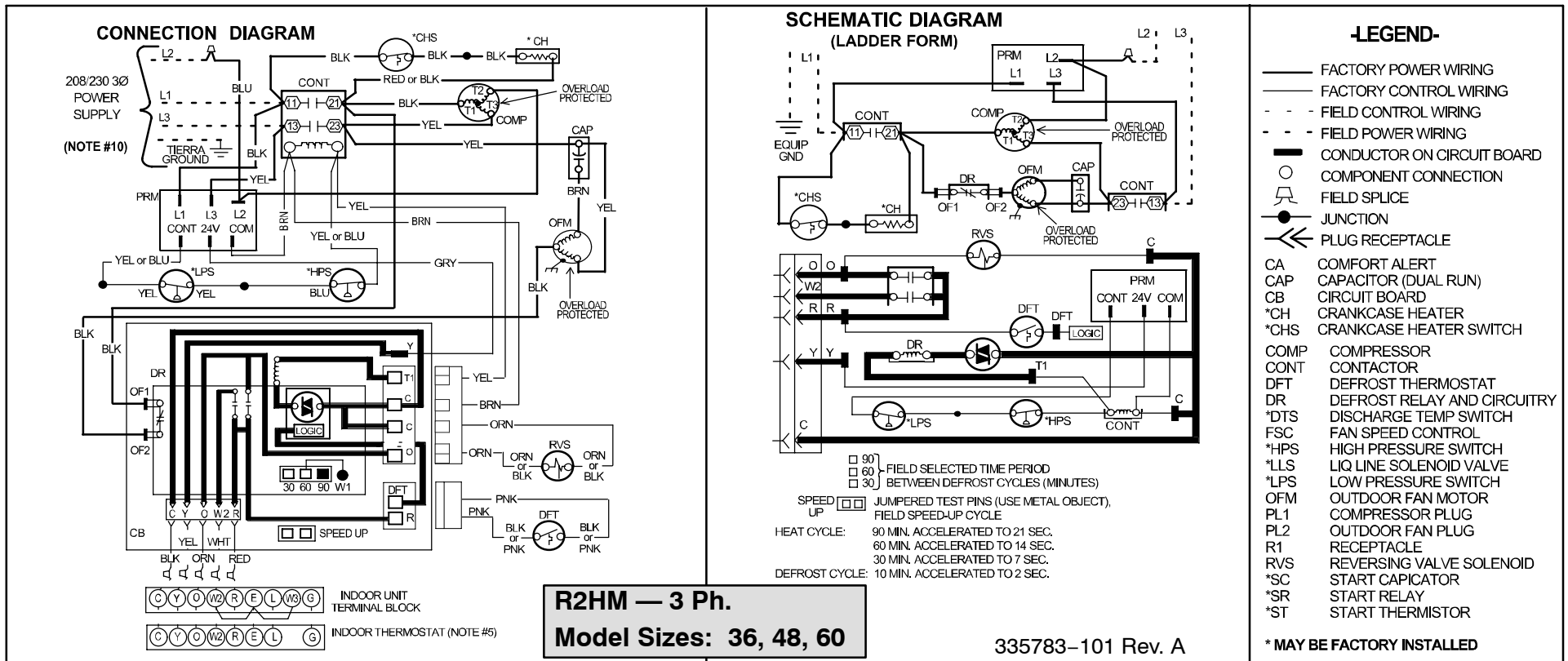
<b>OUTDOOR UNIT MODEL NUMBER IDENTIFICATION GUIDE (single phase)</b>											
Digit Position:	1	2	3	4	5, 6	7	8	9	10	11	12
Example Part Number:	<b>R</b>	<b>2</b>	<b>H</b>	<b>3</b>	<b>18</b>	<b>A</b>	<b>K</b>	<b>C</b>	<b>1</b>	<b>0</b>	<b>0</b>
Product Family	<b>REFRIGERANT</b>		<b>TYPE</b>								
2 = R-22											
4 = R-410A											
A = Air Conditioner											
H = Heat Pump											
3 = 13 SEER	<b>NOMINAL EFFICIENCY</b>										
4 = 14 SEER											
M = 14 SEER											
18 = 18,000 BTUH = 1½ tons	<b>NOMINAL CAPACITY</b>										
24 = 24,000 BTUH = 2 tons											
30 = 30,000 BTUH = 2½ tons											
36 = 36,000 BTUH = 3 tons											
42 = 42,000 BTUH = 3½ tons											
48 = 48,000 BTUH = 4 tons											
60 = 60,000 BTUH = 5 tons											
A = Standard Grille	<b>FEATURES</b>										
G = Coil Guard Grille											
K = 208/230-1-60	<b>VOLTAGE</b>										
Sales Code											
Engineering Revision											
Extra Digit											
Extra Digit											

<b>OUTDOOR UNIT MODEL NUMBER IDENTIFICATION GUIDE (single phase)</b>										
Digit Position:	1,2	3	4	5,6	7	8	9	10	11	
Example Part Number:	<b>WC</b>	<b>H</b>	<b>3</b>	<b>24</b>	<b>2</b>	<b>G</b>	<b>K</b>	<b>A</b>	<b>1</b>	
WC = Condensing Unit	<b>TYPE</b>									
A = Air Conditioner										
H = Heat Pump										
3 = 13 SEER	<b>SEER</b>									
4 = 14 SEER										
18 = 18,000 BTUH = 1½ tons	<b>NOMINAL CAPACITY</b>									
24 = 24,000 BTUH = 2 tons										
30 = 30,000 BTUH = 2½ tons										
36 = 36,000 BTUH = 3 tons										
42 = 42,000 BTUH = 3½ tons										
48 = 48,000 BTUH = 4 tons										
60 = 60,000 BTUH = 5 tons										
2 = R-22	<b>REFRIGERANT</b>									
4 = R-410A										
A = Standard Grille	<b>FEATURE</b>									
G = Coil Guard Grille										
K = 208/230-1-60	<b>VOLTAGE</b>									
Sales Code										
Extra Digit										

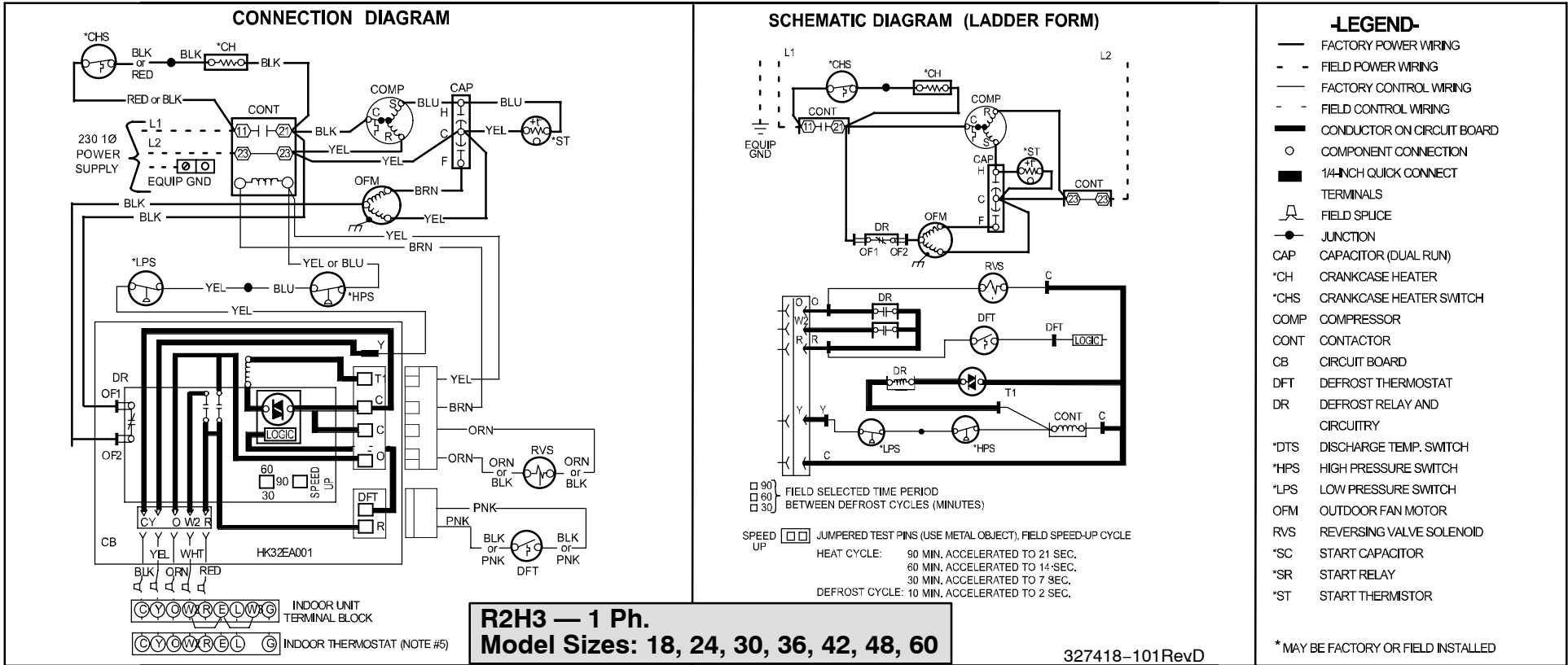
<b>ACCESSORIES PART NUMBER IDENTIFICATION GUIDE</b>									
Digit Position:	1	2	3	4	5	6, 7	8, 9	10, 11	
Example Part Number:	<b>N</b>	<b>A</b>	<b>S</b>	<b>A</b>	<b>0</b>	<b>01</b>	<b>01</b>	<b>CH</b>	
N = Non-Branded	<b>BRANDING</b>								
A = Accessory	<b>PRODUCT GROUP</b>								
S = Split System (AC & HP)	<b>KIT USAGE</b>								
A = Original									
B = 2nd Generation	<b>MAJOR SERIES</b>								
0 = Generic or Not Applicable									
2 = R-22									
4 = R-410A				<b>REFRIGERANT</b>					
Product Identifier Number									
Package Quantity									
Type of Kit (Example: CH = Crankcase Heater)									



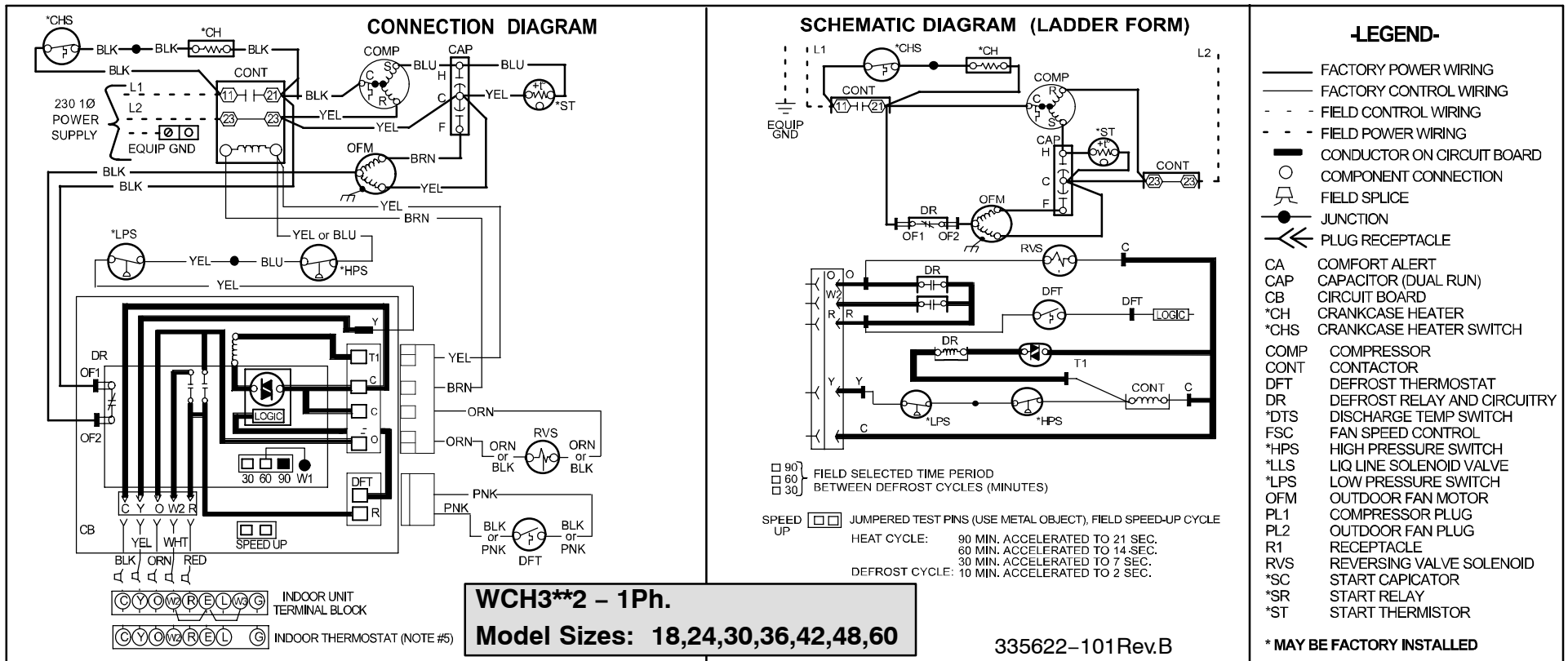
1. Symbols are electrical representation only.
2. Compressor and fan motor furnished with inherent thermal protection.
3. To be wired in accordance with National Electric N.E.C. and local codes.
4. N.E.C. class 2, 24 V circuit, min. 40 VA required, 60 VA on units installed with LLS.
5. Connection for typical heat pump thermostat. For other arrangements see installation instructions.
6. Use copper conductors only. Use conductors suitable for at least 75°C (167°F).
7. If indoor section has a transformer with a grounded secondary, connect the grounded side to "C" on the circuit board.
8. When start capacitor and relay are installed, start thermistor (PTC) is not used.
9. CH not used on all units.
10. If any of the original wire, as supplied, must be replaced, use the same or equivalent wire.
11. Check all electrical connections inside control box for tightness.
12. Do not attempt to operate unit until service valves have been opened.
13. Do not rapid cycle compressor. Compressor must be off 3 minutes to allow pressures to equalize between high and low side before starting.
14. It is imperative to connect 3-phase field power to unit with correct phasing. If phasing is reversed, interchange any two of the three power connections on field side.



1. Symbols are electrical representation only.
2. Compressor and fan motor furnished with inherent thermal protection.
3. To be wired in accordance with National Electric N.E.C. and local codes.
4. N.E.C. class 2, 24 V circuit, min. 40 VA required, 60 VA on units installed with LLS.
5. Connection for typical heat pump thermostat. For other arrangements see installation instructions.
6. Use copper conductors only. Use conductors suitable for at least 75°C (167°F).
7. If indoor section has a transformer with a grounded secondary, connect the grounded side to "C" on the circuit board.
8. When start capacitor and relay are installed, start thermistor (PTC) is not used.
9. CH not used on all units.
10. If any of the original wire, as supplied, must be replaced, use the same or equivalent wire.
11. Check all electrical connections inside control box for tightness.
12. Do not attempt to operate unit until service valves have been opened.
13. Do not rapid cycle compressor. Compressor must be off 3 minutes to allow pressures to equalize between high and low side before starting.
14. It is imperative to connect 3-phase field power to unit with correct phasing. If phasing is reversed, interchange any two of the three power connections on field side.



1. Symbols are electrical representation only.
2. Compressor and fan motor furnished with inherent thermal protection.
3. To be wired in accordance with National Electric N.E.C. and local codes.
4. N.E.C. class 2, 24 V circuit, min. 40 VA required, 60 VA on units installed with LLS.
5. Connection for typical heat pump thermostat. For other arrangements see installation instructions.
6. Use copper conductors only. Use conductors suitable for at least 75°C (167°F).
7. If indoor section has a transformer with a grounded secondary, connect the grounded side to "C" on the circuit board.
8. When start capacitor and relay are installed, start thermistor (PTC) is not used.
9. CH not used on all units.
10. If any of the original wire, as supplied, must be replaced, use the same or equivalent wire.
11. Check all electrical connections inside control box for tightness.
12. Do not attempt to operate unit until service valves have been opened.
13. Do not rapid cycle compressor. Compressor must be off 3 minutes to allow pressures to equalize between high and low side before starting.



1. Symbols are electrical representation only.
2. Compressor and fan motor furnished with inherent thermal protection.
3. To be wired in accordance with National Electric N.E.C. and local codes.
4. N.E.C. class 2, 24 V circuit, min. 40 VA required, 60 VA on units installed with LLS.
5. Connection for typical heat pump thermostat. For other arrangements see installation instructions.
6. Use copper conductors only. Use conductors suitable for at least 75°C (167°F).
7. If indoor section has a transformer with a grounded secondary, connect the grounded side to "C" on the circuit board.
8. When start capacitor and relay are installed, start thermistor (PTC) is not used.
9. CH not used on all units.
10. If any of the original wire, as supplied, must be replaced, use the same or equivalent wire.
11. Check all electrical connections inside control box for tightness.
12. Do not attempt to operate unit until service valves have been opened.
13. Do not rapid cycle compressor. Compressor must be off 3 minutes to allow pressures to equalize between high and low side before starting.
14. It is imperative to connect 3-phase field power to unit with correct phasing. If phasing is reversed, interchange any two of the three power connections on field side.

**R-22 CHARGING CHART**

- Find the required Subcooling Temperature on the unit Rating Plate. Use the closest column on the chart below (5, 10, 15, or 20) .
- Add or remove refrigerant until both the Liquid Line Temperature and Liquid Pressure agree with chart data.

Measured Liquid Pressure (psig)	Rating Plate (required) Subcooling Temperature (° F)			
	5	10	15	20
R-22 Required Liquid Line Temperature (° F)				
163	83	78	73	68
171	86	81	76	71
179	89	84	79	74
187	92	87	82	77
196	95	90	85	80
205	98	93	88	83
214	101	96	91	86
223	104	99	94	89
233	107	102	97	92
243	110	105	100	95
253	113	108	103	98
264	116	111	106	101
274	119	114	109	104
285	122	117	112	107
297	125	120	115	110
309	128	123	118	113



## MULTIPLYING FACTORS

### (Refer to pages 5–11)

- † Total capacities are net (I.D. blower heat subtracted) system capacities based on 25' line set.  
If additional tubing length and/or indoor unit is located above outdoor unit, a slight variation in capacity may occur.
- †† At TVA rating indoor condition (75 °F db, 63 °F wb), all other indoor air temperatures are at 80 °F db  
If additional tubing length and/or indoor unit is located above outdoor unit, a slight variation in capacity may occur.
- \* System amps are total of indoor and outdoor amps.
- ‡ Chart data is for 80° F indoor dry bulb. For indoor db temperatures other than 80° F, measure Indoor db and Indoor CFM, and plug these into the formula below. Measure outdoor db and indoor wet bulb, apply these to the chart above, find MBh and S/T, and plug these into the formula below.  
(Note: if indoor db is the only thing changing, total capacity, MBh, stays the same.)

$$\text{Sensible Capacity at Indoor db LOWER than } 80^{\circ}\text{F} = (\text{MBh} \times \text{S/T}) - \left( \frac{(80 - \text{Indoor db}) \times 835 \times \text{Indoor CFM}}{1000} \right)$$

$$\text{Sensible Capacity at Indoor db HIGHER than } 80^{\circ}\text{F} = (\text{MBh} \times \text{S/T}) + \left( \frac{(\text{Indoor db} - 80) \times 835 \times \text{Indoor CFM}}{1000} \right)$$

COOLING		18 Size Outdoor With FEM2X18**** Indoor Cooling																			
		Outdoor Ambient Temperature - Degrees F, Dry Bulb																			
		75				85				95				105				115			
		Entering Indoor Temperature - Degrees F, Wet Bulb																			
CFM		57	62	67	72	57	62	67	72	57	62	67	72	57	62	67	72	57	62	67	72
525	MBh†	16.62	17.09	18.72	20.58	16.10	16.44	18.02	19.83	15.55	15.77	17.28	19.05	14.97	15.08	16.51	18.23	14.36	14.36	15.71	17.38
	S/T‡	1.00	0.92	0.70	0.52	1.00	0.93	0.71	0.52	1.00	0.95	0.73	0.53	1.00	0.97	0.74	0.54	1.00	1.00	0.76	0.54
	AMPS*	5.27	5.29	5.35	5.43	6.00	6.02	6.08	6.16	6.80	6.81	6.88	6.96	7.69	7.69	7.77	7.86	8.66	8.66	8.74	8.84
	HI PR	172	173	175	177	202	202	205	207	234	235	237	240	270	270	273	276	309	309	312	316
	LO PR	72	74	81	89	73	75	82	90	75	76	83	92	77	78	85	93	79	79	86	94
600	MBh†	17.29	17.50	19.09	20.98	16.74	16.85	18.36	20.20	16.16	16.16	17.60	19.40	15.55	15.55	16.81	18.55	14.91	14.91	15.98	17.67
	S/T‡	1.00	0.96	0.73	0.53	1.00	0.97	0.75	0.54	1.00	1.00	0.76	0.55	1.00	1.00	0.78	0.55	1.00	1.00	0.80	0.56
	AMPS*	5.36	5.37	5.43	5.50	6.09	6.09	6.16	6.23	6.89	6.89	6.96	7.04	7.78	7.78	7.84	7.93	8.75	8.75	8.81	8.91
	HI PR	173	173	175	177	203	203	205	208	235	235	238	241	271	271	273	277	311	311	313	316
	LO PR	75	76	83	91	77	77	84	92	78	78	85	94	80	80	86	95	82	82	88	96
675	MBh†	17.86	17.87	19.38	21.29	17.28	17.27	18.63	20.49	16.67	16.67	17.85	19.66	16.04	16.03	17.04	18.79	15.37	15.37	16.19	17.89
	S/T‡	1.00	1.00	0.77	0.55	1.00	1.00	0.78	0.56	1.00	1.00	0.80	0.56	1.00	1.00	0.81	0.57	1.00	1.00	0.83	0.58
	AMPS*	5.44	5.44	5.50	5.57	6.17	6.17	6.23	6.30	6.97	6.97	7.03	7.11	7.86	7.86	7.91	8.00	8.84	8.84	8.89	8.99
	HI PR	174	174	176	178	204	204	206	208	236	236	238	241	272	272	274	277	312	312	313	317
	LO PR	78	78	85	93	79	79	86	94	81	81	87	95	83	83	88	96	85	85	89	97

HEATING		18 Size Outdoor With FEM2X18**** Indoor Heating																															
		Outdoor Ambient Temperature - Degrees F, Dry Bulb																															
		-3				7				17				27				37				47				57				67			
		Entering Indoor Temperature - Degrees F, Dry Bulb																															
CFM		65	70	75	65	70	75	65	70	75	65	70	75	65	70	75	65	70	75	65	70	75	65	70	75								
525	MBh†	6.59	6.40	6.20	8.43	8.23	8.06	10.53	10.31	10.10	12.88	12.66	12.42	15.24	15.17	14.99	16.74	16.87	16.95	17.47	18.11	18.48	17.23	18.08	18.79								
	T/R	12.20	11.90	11.60	15.60	15.40	15.20	19.70	19.40	19.20	24.30	24.10	23.80	29.00	29.10	29.00	32.00	32.60	33.00	33.50	35.10	36.20	33.00	35.10	36.90								
	AMPS*	4.12	4.35	4.58	4.36	4.61	4.87	4.63	4.90	5.18	4.98	5.25	5.53	5.31	5.65	6.00	5.56	5.92	6.29	5.68	6.15	6.59	5.62	6.12	6.62								
	HI PR	138	149	160	147	158	170	157	169	181	171	183	195	184	199	213	195	210	225	200	219	238	197	218	239								
	LO PR	17	17	17	24	24	24	31	31	31	40	40	40	49	49	50	54	56	57	56	60	63	55	60	64								
600	MBh†	6.68	6.49	6.27	8.54	8.33	8.14	10.66	10.44	10.22	13.04	12.81	12.58	15.05	15.14	15.08	16.23	16.50	16.66	16.09	16.93	17.53	15.63	16.68	17.32								
	T/R	10.70	10.50	10.30	13.80	13.60	13.40	17.40	17.10	16.90	21.40	21.20	21.00	24.90	25.20	25.40	26.90	27.60	28.20	26.70	28.40	29.70	25.90	27.90	29.30								
	AMPS*	4.11	4.35	4.58	4.33	4.59	4.85	4.58	4.85	5.12	4.90	5.17	5.45	5.16	5.49	5.83	5.35	5.71	6.08	5.32	5.78	6.23	5.25	5.73	6.17								
	HI PR	136	147	158	143	155	166	153	164	176	165	177	189	176	190	204	184	199	214	183	202	220	179	199	218								
	LO PR	17	17	17	23	24	24	31	31	31	40	40	40	47	49	50	51	53	55	50	55	58	48	53	57								
675	MBh†	6.76	6.56	6.35	8.63	8.43	8.23	10.77	10.55	10.33	13.16	12.94	12.71	14.83	14.97	15.06	15.43	16.09	16.36	15.04	15.92	16.63	14.37	15.46	16.44								
	T/R	9.60	9.40	9.20	12.40	12.20	12.00	15.50	15.40	15.20	19.10	19.00	18.80	21.60	22.10	22.40	22.60	23.80	24.40	22.00	23.50	24.80	20.90	22.80	24.50								
	AMPS*	4.12	4.36	4.59	4.33	4.58	4.84	4.55	4.81	5.09	4.86	5.12	5.40	5.06	5.38	5.72	5.15	5.56	5.93	5.10	5.53	5.97	5.02	5.46	5.93								
	HI PR	134	144	156	141	152	163	149	160	172	161	172	184	169	183	197	173	190	206	171	189	207	167	186	206								
	LO PR	17	17	17	23	24	24	31	31	31	40	40	40	46	47	49	48	51	53	46	50	54	43	48	53								

COOLING		24 Size Outdoor With FEM2X24**** Indoor Cooling																			
		Outdoor Ambient Temperature – Degrees F, Dry Bulb																			
		75				85				95				105				115			
		Entering Indoor Temperature – Degrees F, Wet Bulb																			
CFM		57	62	67	72	57	62	67	72	57	62	67	72	57	62	67	72	57	62	67	72
700	MBh†	21.76	22.35	24.45	26.84	21.08	21.53	23.55	25.88	20.38	20.67	22.62	24.89	19.63	19.79	21.64	23.85	18.85	18.86	20.60	22.75
	S/T‡	1.00	0.92	0.70	0.52	1.00	0.93	0.71	0.52	1.00	0.95	0.73	0.53	1.00	0.97	0.74	0.53	1.00	1.00	0.76	0.54
	AMPS*	7.03	7.04	7.07	7.11	7.93	7.94	7.98	8.02	8.95	8.95	9.00	9.05	10.06	10.07	10.12	10.18	11.28	11.28	11.35	11.42
	HI PR	177	178	180	183	206	207	210	213	239	239	242	246	275	275	278	282	314	314	318	322
	LO PR	71	73	80	88	72	74	81	89	74	75	82	90	76	76	83	92	78	78	85	93
800	MBh†	22.59	22.86	24.90	27.32	21.88	22.03	23.96	26.33	21.14	21.15	23.00	25.31	20.36	20.35	21.99	24.24	19.53	19.53	20.93	23.11
	S/T‡	1.00	0.96	0.73	0.53	1.00	0.97	0.75	0.54	1.00	1.00	0.76	0.55	1.00	1.00	0.78	0.55	1.00	1.00	0.80	0.56
	AMPS*	7.13	7.13	7.17	7.20	8.04	8.04	8.07	8.12	9.05	9.05	9.09	9.14	10.17	10.17	10.22	10.28	11.40	11.40	11.44	11.52
	HI PR	178	179	181	183	208	208	210	214	240	240	243	247	276	276	279	283	316	316	319	323
	LO PR	74	75	82	90	75	76	83	91	77	77	84	92	79	79	85	93	81	81	86	95
900	MBh†	23.29	23.31	25.24	27.69	22.55	22.54	24.28	26.67	21.77	21.77	23.30	25.63	20.96	20.96	22.26	24.53	20.10	20.10	21.18	23.37
	S/T‡	1.00	1.00	0.76	0.55	1.00	1.00	0.78	0.55	1.00	1.00	0.79	0.56	1.00	1.00	0.81	0.57	1.00	1.00	0.83	0.58
	AMPS*	7.23	7.23	7.26	7.29	8.13	8.13	8.16	8.21	9.15	9.15	9.18	9.24	10.28	10.28	10.31	10.37	11.51	11.51	11.54	11.61
	HI PR	179	179	181	184	209	209	211	214	241	241	244	247	278	278	280	284	317	317	319	323
	LO PR	77	77	83	92	78	78	84	93	80	80	85	94	82	82	86	95	84	84	88	96

HEATING		24 Size Outdoor With FEM2X24**** Indoor Heating																							
		Outdoor Ambient Temperature – Degrees F, Dry Bulb																							
		-3			7			17			27			37			47			57			67		
		Entering Indoor Temperature – Degrees F, Dry Bulb																							
CFM		65	70	75	65	70	75	65	70	75	65	70	75	65	70	75	65	70	75	65	70	75			
700	MBh†	8.84	8.57	8.28	11.15	10.91	10.65	13.62	13.40	13.17	16.37	16.12	15.86	19.37	19.12	18.86	22.52	22.35	22.11	25.23	25.24	25.19	27.80	27.90	27.94
	T/R	12.50	12.30	11.90	15.90	15.70	15.50	19.60	19.40	19.30	23.70	23.60	23.40	28.30	28.20	28.00	33.20	33.20	33.20	37.50	37.80	38.10	41.60	42.10	42.60
	AMPS*	6.06	6.35	6.64	6.34	6.66	7.00	6.62	6.98	7.35	6.96	7.33	7.71	7.39	7.78	8.18	7.80	8.26	8.74	8.19	8.67	9.16	8.61	9.13	9.66
	HI PR	139	150	161	148	159	171	158	170	182	170	182	194	185	198	211	200	215	230	215	231	246	231	247	264
	LO PR	16	16	17	23	23	23	30	30	30	38	39	39	47	48	48	57	58	58	65	67	68	73	75	77
800	MBh†	8.96	8.70	8.40	11.28	11.05	10.79	13.76	13.55	13.32	16.55	16.30	16.04	19.57	19.32	19.06	22.45	22.40	22.26	24.83	24.93	24.97	27.00	27.25	27.43
	T/R	11.10	10.90	10.60	14.00	13.90	13.70	17.20	17.10	17.00	20.90	20.70	20.60	24.90	24.80	24.60	28.70	28.90	29.00	32.00	32.40	32.70	34.90	35.60	36.20
	AMPS*	6.07	6.36	6.66	6.32	6.65	6.98	6.57	6.93	7.29	6.87	7.24	7.61	7.27	7.65	8.04	7.58	8.02	8.48	7.90	8.37	8.85	8.22	8.73	9.25
	HI PR	137	147	158	144	156	167	153	165	177	164	176	188	179	191	203	190	205	219	203	218	233	215	231	248
	LO PR	16	16	17	23	23	23	30	30	30	38	38	39	47	48	48	56	57	58	63	65	66	69	72	74
900	MBh†	9.07	8.81	8.52	11.39	11.16	10.91	13.89	13.67	13.44	16.70	16.45	16.20	19.74	19.48	19.22	22.25	22.32	22.28	24.36	24.57	24.69	25.97	26.55	26.84
	T/R	10.00	9.80	9.50	12.60	12.40	12.30	15.40	15.30	15.20	18.60	18.50	18.40	22.20	22.10	22.00	25.10	25.50	25.70	27.60	28.20	28.60	29.60	30.60	31.20
	AMPS*	6.10	6.39	6.69	6.33	6.65	6.99	6.55	6.90	7.27	6.83	7.18	7.56	7.20	7.57	7.95	7.43	7.86	8.31	7.71	8.17	8.64	7.92	8.45	8.96
	HI PR	135	145	156	142	153	164	150	161	173	160	172	184	173	185	198	183	197	211	193	208	224	201	219	236
	LO PR	16	16	17	23	23	23	30	30	30	38	38	39	47	47	48	55	56	57	61	63	64	65	69	71

COOLING		30 Size Outdoor With FEM2X30**** Indoor Cooling																			
		Outdoor Ambient Temperature - Degrees F, Dry Bulb																			
		75				85				95				105				115			
		Entering Indoor Temperature - Degrees F, Wet Bulb																			
CFM		57	62	67	72	57	62	67	72	57	62	67	72	57	62	67	72	57	62	67	72
875	MBh†	27.33	28.23	30.97	34.11	26.44	27.11	29.71	32.70	25.58	26.06	28.51	31.37	24.71	25.01	27.33	30.08	23.81	23.96	26.14	28.79
	S/T‡	1.00	0.91	0.70	0.52	1.00	0.93	0.71	0.52	1.00	0.95	0.73	0.53	1.00	0.96	0.74	0.54	1.00	0.98	0.75	0.54
	AMPS*	9.16	9.18	9.25	9.33	10.14	10.16	10.22	10.29	11.28	11.29	11.33	11.39	12.56	12.56	12.60	12.65	13.99	13.99	14.03	14.08
	HI PR	173	174	176	179	202	203	205	208	234	234	237	240	269	269	272	276	308	308	311	315
	LO PR	69	72	79	87	71	73	80	88	73	74	81	89	75	75	82	91	76	77	84	92
1000	MBh†	28.41	28.88	31.58	34.76	27.46	27.74	30.26	33.30	26.53	26.66	29.00	31.91	25.61	25.62	27.78	30.56	24.67	24.66	26.55	29.22
	S/T‡	1.00	0.95	0.73	0.53	1.00	0.97	0.74	0.54	1.00	0.98	0.76	0.55	1.00	1.00	0.77	0.55	1.00	1.00	0.79	0.56
	AMPS*	9.31	9.32	9.39	9.48	10.29	10.29	10.35	10.43	11.42	11.42	11.46	11.53	12.70	12.70	12.73	12.78	14.13	14.13	14.16	14.20
	HI PR	174	175	177	179	203	203	206	209	235	235	238	241	270	270	273	276	309	309	312	315
	LO PR	72	74	80	89	74	75	82	90	76	76	83	91	78	78	84	92	79	79	85	94
1125	MBh†	29.32	29.48	32.06	35.28	28.30	28.32	30.69	33.76	27.33	27.32	29.39	32.32	26.36	26.36	28.13	30.93	25.37	25.37	26.87	29.55
	S/T‡	1.00	0.98	0.76	0.55	1.00	1.00	0.78	0.55	1.00	1.00	0.79	0.56	1.00	1.00	0.81	0.57	1.00	1.00	0.83	0.58
	AMPS*	9.45	9.46	9.52	9.61	10.43	10.43	10.48	10.56	11.55	11.55	11.59	11.66	12.83	12.83	12.86	12.91	14.26	14.26	14.28	14.33
	HI PR	175	175	177	180	204	204	206	209	236	236	238	242	271	271	274	277	310	310	312	316
	LO PR	75	75	82	90	77	77	83	91	79	79	84	93	80	80	86	94	82	82	87	95

HEATING		30 Size Outdoor With FEM2X30**** Indoor Heating																							
		Outdoor Ambient Temperature - Degrees F, Dry Bulb																							
		-3			7			17			27			37			47			57			67		
		Entering Indoor Temperature - Degrees F, Dry Bulb																							
CFM		65	70	75	65	70	75	65	70	75	65	70	75	65	70	75	65	70	75	65	70	75	65	70	75
875	MBh†	11.40	11.17	10.92	14.23	13.96	13.69	17.28	17.03	16.76	20.65	20.37	20.09	24.37	24.09	23.76	27.60	27.63	27.56	30.57	30.65	30.69	33.42	33.63	33.78
	T/R	13.20	13.00	12.80	16.50	16.40	16.20	20.20	20.10	20.00	24.30	24.20	24.10	29.00	28.90	28.70	33.00	33.40	33.60	36.80	37.30	37.70	40.50	41.20	41.80
	AMPS*	7.83	8.19	8.58	8.16	8.52	8.90	8.50	8.90	9.31	8.91	9.33	9.76	9.43	9.88	10.33	9.75	10.27	10.82	10.17	10.72	11.29	10.60	11.19	11.81
	HI PR	140	151	163	149	161	172	159	171	184	173	185	197	189	202	215	201	216	231	215	231	247	229	246	264
	LO PR	15	15	16	21	22	22	29	29	29	37	37	37	46	46	46	54	55	55	61	62	63	67	69	71
1000	MBh†	11.55	11.31	11.07	14.40	14.13	13.85	17.46	17.21	16.95	20.86	20.58	20.30	24.54	24.33	24.01	27.32	27.40	27.44	29.97	30.17	30.30	31.45	32.43	33.01
	T/R	11.60	11.50	11.40	14.60	14.40	14.30	17.80	17.70	17.60	21.40	21.30	21.20	25.40	25.40	25.20	28.40	28.70	29.00	31.30	31.80	32.30	32.90	34.40	35.30
	AMPS*	7.86	8.22	8.60	8.16	8.52	8.90	8.46	8.85	9.26	8.83	9.24	9.67	9.24	9.75	10.19	9.53	10.03	10.56	9.87	10.40	10.96	10.05	10.72	11.37
	HI PR	138	149	160	146	157	169	155	167	179	167	179	191	180	194	207	191	205	220	202	218	234	209	228	247
	LO PR	15	15	15	21	22	22	28	29	29	36	37	37	45	46	46	52	53	54	58	60	61	62	65	68
1125	MBh†	11.69	11.43	11.20	14.55	14.28	14.00	17.63	17.37	17.11	21.04	20.77	20.49	24.52	24.48	24.25	26.99	27.16	27.25	29.33	29.65	29.87	29.52	30.65	31.61
	T/R	10.40	10.30	10.20	13.10	12.90	12.80	15.90	15.80	15.70	19.10	19.00	18.90	22.40	22.60	22.60	24.80	25.20	25.50	27.00	27.60	28.10	27.20	28.60	29.80
	AMPS*	7.91	8.26	8.64	8.18	8.54	8.92	8.45	8.85	9.25	8.80	9.21	9.63	9.13	9.61	10.13	9.39	9.88	10.40	9.67	10.20	10.74	9.68	10.31	10.97
	HI PR	136	147	158	143	154	166	151	163	175	163	174	187	174	188	202	183	197	212	193	208	224	193	212	232
	LO PR	15	15	15	21	22	22	28	29	29	36	37	37	45	46	46	51	52	53	56	58	59	56	60	63

COOLING		36 Size Outdoor With FEM2X35**** Indoor Cooling																			
		Outdoor Ambient Temperature – Degrees F, Dry Bulb																			
		75				85				95				105				115			
		Entering Indoor Temperature – Degrees F, Wet Bulb																			
CFM		57	62	67	72	57	62	67	72	57	62	67	72	57	62	67	72	57	62	67	72
1050	MBh†	32.17	33.09	36.17	39.68	31.17	31.87	34.84	38.25	30.13	30.62	33.46	36.78	29.04	29.33	32.02	35.24	27.90	28.00	30.51	33.64
	S/T‡	1.00	0.93	0.72	0.53	1.00	0.95	0.73	0.53	1.00	0.97	0.74	0.54	1.00	0.98	0.75	0.54	1.00	0.99	0.77	0.55
	AMPS*	10.74	10.76	10.83	10.90	11.89	11.91	11.98	12.06	13.18	13.19	13.27	13.36	14.59	14.60	14.68	14.78	16.13	16.13	16.23	16.34
	HI PR	173	173	176	178	201	202	205	207	233	234	236	240	268	268	271	275	306	306	309	313
	LO PR	68	70	77	85	70	71	78	86	72	73	80	88	73	74	81	89	75	76	82	90
1200	MBh†	33.37	33.81	36.81	40.36	32.32	32.58	35.42	38.89	31.22	31.32	34.00	37.37	30.08	30.08	32.52	35.78	28.87	28.87	30.97	34.12
	S/T‡	1.00	0.97	0.75	0.54	1.00	0.99	0.76	0.55	1.00	0.99	0.77	0.55	1.00	1.00	0.79	0.56	1.00	1.00	0.81	0.57
	AMPS*	10.92	10.93	11.00	11.08	12.08	12.08	12.15	12.24	13.37	13.37	13.44	13.53	14.78	14.78	14.86	14.96	16.32	16.32	16.40	16.52
	HI PR	174	174	176	179	203	203	205	208	234	235	237	240	269	269	272	276	308	308	310	314
	LO PR	71	72	79	87	73	73	80	88	75	75	81	89	76	76	83	91	78	78	84	92
1350	MBh†	34.37	34.48	37.31	40.90	33.27	33.28	35.89	39.38	32.13	32.12	34.43	37.82	30.93	30.93	32.91	36.19	29.68	29.67	31.32	34.49
	S/T‡	1.00	0.99	0.78	0.56	1.00	1.00	0.79	0.56	1.00	1.00	0.81	0.57	1.00	1.00	0.83	0.58	1.00	1.00	0.85	0.59
	AMPS*	11.10	11.10	11.16	11.25	12.26	12.26	12.32	12.41	13.55	13.55	13.61	13.70	14.97	14.97	15.03	15.13	16.51	16.51	16.57	16.69
	HI PR	175	175	177	179	204	204	206	209	236	236	238	241	271	271	273	276	309	309	311	315
	LO PR	74	74	81	89	75	75	82	90	77	77	83	91	79	79	84	92	81	81	85	93

HEATING		36 Size Outdoor With FEM2X35**** Indoor Heating																															
		Outdoor Ambient Temperature – Degrees F, Dry Bulb																															
		-3				7				17				27				37				47				57				67			
		Entering Indoor Temperature – Degrees F, Dry Bulb																															
CFM		65	70	75	65	70	75	65	70	75	65	70	75	65	70	75	65	70	75	65	70	75	65	70	75	65	70	75					
1050	MBh†	14.43	14.05	13.64	17.90	17.56	17.19	21.61	21.30	20.97	25.70	25.33	24.98	30.24	29.83	29.43	33.90	33.82	33.74	37.45	37.47	37.43	41.05	41.01	41.09	44.58	44.54	44.50					
	T/R	13.40	13.20	12.90	16.80	16.60	16.40	20.40	20.30	20.10	24.40	24.30	24.20	29.00	28.80	28.70	32.70	32.90	33.10	36.40	36.70	37.00	40.30	40.50	40.90	44.20	44.40	44.60					
	AMPS*	9.65	10.04	10.43	10.06	10.49	10.94	10.48	10.96	11.45	11.01	11.50	12.01	11.60	12.17	12.70	12.03	12.62	13.25	12.53	13.17	13.82	14.43	15.07	15.72	16.37	17.01	17.66					
	HI PR	141	152	163	150	161	173	160	172	184	173	185	198	188	202	215	200	214	230	214	229	245	258	274	290	306	322	338					
	LO PR	15	15	16	21	22	22	28	29	29	36	37	37	45	46	46	53	54	55	60	61	62	68	69	70	77	78	79					
1200	MBh†	14.64	14.26	13.85	18.12	17.78	17.42	21.85	21.54	21.21	25.98	25.62	25.25	30.29	30.15	29.78	33.55	33.60	33.58	36.76	36.93	37.01	40.24	40.10	40.26	43.73	43.59	43.45					
	T/R	11.90	11.70	11.50	14.80	14.70	14.50	18.00	17.90	17.70	21.50	21.40	21.30	25.20	25.30	25.20	28.10	28.40	28.60	30.90	31.40	31.70	32.60	33.80	34.70	35.60	36.70	37.50					
	AMPS*	9.71	10.10	10.50	10.08	10.51	10.96	10.45	10.92	11.41	10.94	11.42	11.92	11.40	11.98	12.57	11.78	12.37	12.98	12.20	12.82	13.47	14.22	14.84	15.47	16.09	16.71	17.34					
	HI PR	138	149	160	146	158	169	155	167	180	168	180	192	180	194	208	190	204	219	201	217	232	247	263	279	294	310	326					
	LO PR	15	15	15	21	21	22	28	29	29	36	37	37	45	46	46	51	52	53	57	59	60	61	64	67	70	73	76					
1350	MBh†	14.82	14.45	14.05	18.31	17.98	17.63	22.06	21.75	21.43	26.22	25.87	25.50	30.21	30.23	30.04	33.16	33.32	33.38	35.99	36.33	36.54	39.26	39.59	39.81	42.93	43.26	43.48					
	T/R	10.70	10.50	10.30	13.30	13.10	13.00	16.10	16.00	15.90	19.20	19.10	19.00	22.20	22.50	22.50	24.50	24.90	25.20	26.70	27.20	27.70	28.00	28.20	28.30	29.30	29.50	29.60					
	AMPS*	9.78	10.18	10.58	10.12	10.56	11.01	10.46	10.93	11.42	10.93	11.40	11.89	11.30	11.86	12.45	11.64	12.22	12.82	11.98	12.60	13.24	13.82	14.44	15.07	15.70	16.32	16.94					
	HI PR	136	147	158	144	155	167	152	164	176	164	175	187	174	187	201	183	197	211	192	207	223	238	253	269	284	299	314					
	LO PR	15	15	15	21	21	22	28	29	29	36	37	37	44	45	46	50	51	52	55	57	58	61	64	67	70	73	76					

COOLING		42 Size Outdoor With FEM2X42**** Indoor Cooling																			
		Outdoor Ambient Temperature - Degrees F, Dry Bulb																			
		75				85				95				105				115			
		Entering Indoor Temperature - Degrees F, Wet Bulb																			
CFM		57	62	67	72	57	62	67	72	57	62	67	72	57	62	67	72	57	62	67	72
1225	MBh†	37.73	38.87	42.59	46.70	36.54	37.41	40.98	44.97	35.32	35.93	39.35	43.23	34.07	34.43	37.67	41.43	32.80	32.93	35.96	39.58
	S/T‡	1.00	0.94	0.72	0.53	1.00	0.95	0.73	0.53	1.00	0.97	0.74	0.54	1.00	0.99	0.75	0.54	1.00	1.01	0.77	0.55
	AMPS*	12.69	12.72	12.82	12.92	13.98	14.01	14.12	14.24	15.44	15.46	15.58	15.71	17.05	17.07	17.19	17.34	18.85	18.86	18.99	19.15
	HI PR	175	176	178	181	204	204	207	211	236	236	239	243	271	271	274	279	309	309	313	317
	LO PR	69	71	78	86	71	72	80	88	72	74	81	89	74	75	82	90	76	76	83	91
1400	MBh†	39.18	39.73	43.36	47.49	37.92	38.24	41.70	45.71	36.63	36.75	40.00	43.90	35.31	35.31	38.26	42.04	33.95	33.95	36.49	40.13
	S/T‡	1.00	0.98	0.75	0.54	1.00	0.99	0.76	0.55	1.00	0.99	0.78	0.56	1.00	1.00	0.79	0.56	1.00	1.00	0.81	0.57
	AMPS*	12.94	12.95	13.05	13.15	14.24	14.25	14.35	14.48	15.69	15.70	15.81	15.95	17.31	17.32	17.43	17.58	19.12	19.12	19.23	19.38
	HI PR	176	176	179	182	205	205	208	212	237	237	240	244	272	272	275	279	311	311	314	318
	LO PR	72	73	80	88	74	75	81	89	76	76	83	91	77	77	84	92	79	79	85	93
1575	MBh†	40.39	40.51	43.94	48.09	39.07	39.07	42.22	46.25	37.72	37.71	40.49	44.40	36.33	36.33	38.70	42.49	34.91	34.91	36.89	40.53
	S/T‡	1.00	0.99	0.78	0.56	1.00	1.00	0.79	0.56	1.00	1.00	0.81	0.57	1.00	1.00	0.83	0.58	1.00	1.00	0.85	0.59
	AMPS*	13.18	13.18	13.27	13.37	14.48	14.48	14.58	14.70	15.94	15.94	16.04	16.17	17.56	17.56	17.66	17.81	19.37	19.37	19.45	19.61
	HI PR	177	177	180	182	206	206	209	212	238	238	241	245	273	273	276	280	312	312	314	319
	LO PR	75	75	82	90	77	77	83	91	78	78	84	92	80	80	85	93	82	82	86	94

HEATING		42 Size Outdoor With FEM2X42**** Indoor Heating																															
		Outdoor Ambient Temperature - Degrees F, Dry Bulb																															
		-3				7				17				27				37				47				57				67			
		Entering Indoor Temperature - Degrees F, Dry Bulb																															
CFM		65	70	75	65	70	75	65	70	75	65	70	75	65	70	75	65	70	75	65	70	75	65	70	75	65	70	75					
1225	MBh†	17.53	17.16	16.75	21.57	21.25	20.92	25.94	25.63	25.33	30.84	30.45	30.07	36.11	35.84	35.44	40.46	40.40	40.28	44.73	44.81	44.81	47.92	48.92	49.14								
	T/R	14.10	13.90	13.70	17.40	17.30	17.20	21.10	21.10	21.00	25.30	25.20	25.10	29.90	29.90	29.80	33.70	34.00	34.20	37.50	37.90	38.30	40.40	41.70	42.30								
	AMPS*	11.13	11.59	12.05	11.58	12.08	12.61	12.06	12.59	13.16	12.66	13.22	13.80	13.25	13.90	14.58	13.76	14.43	15.13	14.33	15.05	15.79	14.75	15.65	16.46								
	HI PR	141	152	163	149	161	173	160	172	184	173	185	198	186	200	215	198	213	228	212	227	243	221	241	258								
	LO PR	16	16	16	22	22	22	29	30	30	37	38	38	46	47	47	53	54	55	60	61	63	65	68	70								
1400	MBh†	17.78	17.41	17.01	21.83	21.51	21.18	26.23	25.91	25.60	31.19	30.79	30.41	36.04	35.93	35.75	39.90	40.00	40.01	43.57	43.90	44.07	44.19	45.48	46.58								
	T/R	12.50	12.30	12.10	15.40	15.30	15.20	18.60	18.50	18.50	22.30	22.20	22.10	25.90	26.10	26.20	28.80	29.20	29.50	31.60	32.20	32.60	32.10	33.40	34.60								
	AMPS*	11.22	11.67	12.14	11.62	12.12	12.65	12.05	12.58	13.13	12.61	13.15	13.72	13.07	13.68	14.35	13.50	14.15	14.84	13.93	14.64	15.37	13.96	14.81	15.69								
	HI PR	138	149	160	146	157	169	155	167	179	167	179	192	178	191	205	188	202	217	198	214	229	199	217	237								
	LO PR	16	16	16	22	22	22	29	29	30	37	38	38	45	46	47	51	53	54	57	59	60	58	61	64								
1575	MBh†	18.00	17.63	17.24	22.06	21.74	21.41	26.49	26.16	25.85	31.49	31.09	30.70	35.83	35.84	35.81	39.27	39.51	39.64	40.85	42.17	43.20	41.07	42.71	43.97								
	T/R	11.20	11.10	10.90	13.80	13.70	13.60	16.60	16.60	16.50	19.90	19.80	19.70	22.80	23.00	23.20	25.10	25.40	25.80	26.10	27.20	28.20	26.30	27.60	28.70								
	AMPS*	11.33	11.79	12.25	11.70	12.20	12.72	12.10	12.62	13.16	12.63	13.15	13.72	12.99	13.59	14.23	13.35	13.99	14.66	13.50	14.29	15.10	13.49	14.31	15.15								
	HI PR	136	147	158	143	154	166	151	163	175	163	175	187	171	185	198	180	194	209	184	201	219	183	202	220								
	LO PR	16	16	16	22	22	22	29	29	30	37	37	38	44	45	46	50	51	52	52	55	58	52	56	59								

COOLING		48 Size Outdoor With FEM2X48**** Indoor Cooling																			
		Outdoor Ambient Temperature – Degrees F, Dry Bulb																			
		75				85				95				105				115			
		Entering Indoor Temperature – Degrees F, Wet Bulb																			
CFM		57	62	67	72	57	62	67	72	57	62	67	72	57	62	67	72	57	62	67	72
1400	MBh†	43.79	45.44	49.80	54.68	42.41	43.73	47.93	52.67	40.99	41.98	46.00	50.60	39.52	40.18	44.01	48.45	37.99	38.34	41.96	46.22
	S/T‡	1.00	0.92	0.70	0.52	1.00	0.93	0.71	0.53	1.00	0.95	0.73	0.53	1.00	0.97	0.74	0.54	1.00	0.99	0.75	0.54
	AMPS*	14.42	14.53	14.84	15.19	16.01	16.11	16.42	16.78	17.78	17.86	18.18	18.56	19.73	19.79	20.12	20.51	21.87	21.90	22.24	22.65
	HI PR	171	172	175	179	199	200	204	208	230	231	235	240	265	265	270	275	302	302	307	312
	LO PR	69	72	79	87	71	73	80	89	73	74	82	90	74	76	83	91	76	77	84	92
1600	MBh†	45.56	46.48	50.80	55.76	44.10	44.73	48.85	53.67	42.59	42.94	46.84	51.52	41.03	41.14	44.78	49.28	39.41	39.40	42.65	46.96
	S/T‡	1.00	0.96	0.73	0.53	1.00	0.97	0.74	0.54	1.00	0.99	0.76	0.55	1.00	0.99	0.77	0.55	1.00	1.00	0.79	0.56
	AMPS*	14.76	14.83	15.13	15.49	16.36	16.41	16.72	17.08	18.13	18.16	18.48	18.86	20.09	20.10	20.41	20.81	22.23	22.23	22.54	22.94
	HI PR	172	173	176	179	201	201	205	209	232	233	236	241	267	267	271	276	304	304	308	313
	LO PR	72	74	81	90	74	75	82	91	76	76	84	92	78	78	85	93	80	80	86	94
1800	MBh†	47.04	47.40	51.56	56.59	45.51	45.64	49.55	54.44	43.93	43.93	47.49	52.22	42.29	42.29	45.36	49.91	40.59	40.59	43.17	47.52
	S/T‡	1.00	0.99	0.76	0.55	1.00	0.99	0.78	0.56	1.00	1.00	0.79	0.56	1.00	1.00	0.81	0.57	1.00	1.00	0.83	0.58
	AMPS*	15.09	15.11	15.41	15.77	16.69	16.70	16.99	17.36	18.46	18.46	18.75	19.14	20.42	20.42	20.69	21.09	22.57	22.57	22.81	23.22
	HI PR	173	174	177	180	202	202	206	210	234	234	237	242	268	268	272	277	306	306	309	314
	LO PR	75	76	83	91	77	77	84	92	79	79	85	93	80	80	86	95	82	82	87	96

HEATING		48 Size Outdoor With FEM2X48**** Indoor Heating																							
		Outdoor Ambient Temperature – Degrees F, Dry Bulb																							
		-3			7			17			27			37			47			57			67		
		Entering Indoor Temperature – Degrees F, Dry Bulb																							
CFM		65	70	75	65	70	75	65	70	75	65	70	75	65	70	75	65	70	75	65	70	75			
1400	MBh†	19.78	19.40	19.00	24.28	23.93	23.59	29.16	28.83	28.51	34.55	34.18	33.81	40.08	39.91	39.67	45.03	45.00	44.86	46.35	47.54	48.48	45.69	48.16	49.33
	T/R	14.00	13.90	13.70	17.30	17.20	17.10	20.90	20.90	20.80	25.00	24.90	24.90	29.20	29.30	29.40	33.00	33.30	33.50	34.10	35.30	36.40	33.50	35.80	37.10
	AMPS*	12.07	12.70	13.34	12.64	13.31	14.00	13.28	13.98	14.70	14.06	14.78	15.54	14.70	15.49	16.33	15.44	16.29	17.16	15.57	16.64	17.73	15.39	16.66	17.79
	HI PR	140	151	163	149	160	172	158	170	183	170	183	196	180	194	208	193	207	221	195	213	231	192	213	232
	LO PR	14	14	14	20	20	20	27	27	27	35	35	35	42	43	44	49	50	51	51	54	56	50	54	57
1600	MBh†	20.02	19.65	19.25	24.54	24.20	23.86	29.43	29.13	28.80	34.90	34.51	34.12	39.87	39.88	39.75	42.99	44.11	44.55	43.14	44.64	45.72	43.09	45.03	45.84
	T/R	12.40	12.30	12.10	15.20	15.20	15.10	18.40	18.40	18.30	22.00	21.90	21.90	25.20	25.50	25.60	27.30	28.30	28.90	27.40	28.70	29.70	27.40	28.90	29.80
	AMPS*	12.12	12.75	13.38	12.63	13.30	13.98	13.21	13.90	14.61	13.89	14.65	15.38	14.45	15.23	16.04	14.84	15.82	16.76	14.80	15.83	16.87	14.74	15.82	16.81
	HI PR	138	148	160	145	156	168	154	165	178	164	177	189	173	186	199	179	196	211	178	196	213	177	195	212
	LO PR	14	14	14	20	20	20	27	27	27	35	35	35	41	42	43	46	48	50	46	49	51	45	49	51
1800	MBh†	20.24	19.87	19.48	24.77	24.45	24.10	29.69	29.38	29.04	35.14	34.81	34.44	39.66	39.75	39.71	40.59	41.93	43.13	40.90	42.44	43.84	40.53	42.57	44.32
	T/R	11.10	11.00	10.90	13.60	13.60	13.50	16.40	16.40	16.40	19.60	19.60	19.50	22.20	22.50	22.60	22.70	23.70	24.70	22.90	24.00	25.10	22.70	24.10	25.40
	AMPS*	12.21	12.83	13.47	12.67	13.33	14.02	13.21	13.89	14.60	13.78	14.56	15.33	14.31	15.08	15.88	14.39	15.34	16.34	14.38	15.35	16.37	14.29	15.32	16.38
	HI PR	135	146	158	142	153	165	150	162	174	158	171	184	167	180	193	168	184	201	168	184	201	167	184	201
	LO PR	14	14	14	20	20	20	27	27	27	34	35	35	41	42	42	42	44	47	42	45	48	41	45	48

COOLING		60 Size Outdoor With FEM2X60**** Indoor Cooling																			
		Outdoor Ambient Temperature - Degrees F, Dry Bulb																			
		75				85				95				105				115			
		Entering Indoor Temperature - Degrees F, Wet Bulb																			
CFM		57	62	67	72	57	62	67	72	57	62	67	72	57	62	67	72	57	62	67	72
1750	MBh†	52.86	53.65	58.46	63.81	51.21	51.70	56.27	61.46	49.49	49.68	54.00	59.01	47.68	47.68	51.63	56.46	45.77	45.77	49.15	53.77
	S/T‡	1.00	0.96	0.73	0.53	1.00	0.98	0.75	0.54	1.00	0.99	0.76	0.55	1.00	1.00	0.77	0.55	1.00	1.00	0.79	0.56
	AMPS*	17.19	17.23	17.43	17.66	19.05	19.08	19.29	19.52	21.12	21.13	21.34	21.59	23.39	23.39	23.61	23.87	25.86	25.86	26.07	26.35
	HI PR	172	173	176	179	201	201	205	209	232	232	236	241	267	267	271	275	304	304	308	313
	LO PR	69	71	78	86	71	72	79	87	73	73	80	88	74	74	81	89	76	76	82	90
2000	MBh†	54.74	54.76	59.33	64.68	52.99	52.99	57.06	62.26	51.17	51.16	54.72	59.73	49.25	49.25	52.28	57.10	47.23	47.23	49.72	54.33
	S/T‡	1.00	1.00	0.77	0.55	1.00	1.00	0.78	0.56	1.00	1.00	0.80	0.57	1.00	1.00	0.82	0.57	1.00	1.00	0.84	0.59
	AMPS*	17.60	17.60	17.79	18.02	19.46	19.46	19.65	19.89	21.53	21.53	21.71	21.96	23.80	23.80	23.97	24.23	26.28	26.28	26.44	26.72
	HI PR	174	174	177	180	202	202	206	209	234	234	237	241	268	268	271	276	306	306	309	314
	LO PR	73	73	79	88	74	74	80	88	76	76	81	90	78	78	83	91	79	79	84	92
2250	MBh†	56.28	56.28	59.97	65.30	54.44	54.43	57.65	62.82	52.53	52.53	55.25	60.23	50.52	50.52	52.75	57.54	48.41	48.40	50.14	54.71
	S/T‡	1.00	1.00	0.80	0.57	1.00	1.00	0.82	0.58	1.00	1.00	0.84	0.59	1.00	1.00	0.86	0.60	1.00	1.00	0.88	0.61
	AMPS*	17.99	17.99	18.15	18.37	19.86	19.86	20.00	20.24	21.93	21.93	22.07	22.31	24.21	24.21	24.33	24.59	26.69	26.69	26.80	27.07
	HI PR	175	175	177	180	204	204	206	210	236	236	238	242	270	270	272	277	308	308	309	314
	LO PR	75	75	81	89	77	77	82	90	79	79	83	91	80	80	84	92	82	82	85	93

HEATING		60 Size Outdoor With FEM2X60**** Indoor Heating																															
		Outdoor Ambient Temperature - Degrees F, Dry Bulb																															
		-3				7				17				27				37				47				57				67			
		Entering Indoor Temperature - Degrees F, Dry Bulb																															
CFM		65	70	75	65	70	75	65	70	75	65	70	75	65	70	75	65	70	75	65	70	75	65	70	75	65	70	75					
1750	MBh†	25.07	24.57	24.07	30.45	30.04	29.62	36.25	35.86	35.48	42.92	42.40	41.85	49.71	49.56	49.25	53.85	55.00	55.86	55.00	56.84	58.34	55.33	57.40	59.16								
	T/R	13.40	13.20	13.10	16.30	16.30	16.20	19.60	19.50	19.50	23.30	23.20	23.10	27.20	27.40	27.40	29.60	30.50	31.30	30.30	31.60	32.80	30.40	31.90	33.30								
	AMPS*	15.81	16.49	17.17	16.41	17.17	17.94	17.05	17.86	18.70	17.86	18.69	19.53	18.43	19.35	20.34	18.88	20.02	21.17	18.94	20.17	21.43	18.90	20.15	21.44								
	HI PR	138	149	160	145	157	169	154	166	178	164	177	190	174	187	200	181	197	213	182	200	218	181	199	218								
	LO PR	14	14	14	20	20	20	26	27	27	34	34	34	42	42	43	46	49	51	48	51	53	48	51	54								
2000	MBh†	25.41	24.94	24.44	30.81	30.41	30.00	36.65	36.24	35.86	43.39	42.91	42.38	49.44	49.48	49.38	51.16	52.84	53.88	50.79	53.26	54.77	51.09	53.40	54.94								
	T/R	11.80	11.70	11.60	14.40	14.30	14.30	17.20	17.20	17.20	20.50	20.50	20.40	23.50	23.70	23.90	24.40	25.40	26.20	24.20	25.70	26.70	24.30	25.70	26.70								
	AMPS*	15.97	16.66	17.34	16.51	17.27	18.04	17.10	17.89	18.72	17.77	18.69	19.52	18.29	19.21	20.15	18.41	19.54	20.66	18.32	19.52	20.69	18.29	19.46	20.64								
	HI PR	135	146	158	142	153	165	150	161	174	158	171	184	167	180	193	169	185	201	168	185	202	167	184	201								
	LO PR	14	14	14	20	20	20	26	26	27	34	34	34	41	42	42	43	45	47	42	46	48	42	46	48								
2250	MBh†	25.74	25.28	24.78	31.14	30.75	30.35	37.02	36.61	36.22	43.69	43.32	42.84	47.79	49.35	49.31	48.10	50.23	51.57	48.16	50.26	52.12	48.18	50.52	52.33								
	T/R	10.60	10.50	10.40	12.90	12.90	12.80	15.40	15.40	15.40	18.30	18.30	18.30	20.10	20.90	21.10	20.20	21.30	22.10	20.20	21.40	22.40	20.20	21.50	22.50								
	AMPS*	16.17	16.86	17.55	16.66	17.42	18.19	17.21	17.99	18.82	17.75	18.67	19.60	18.13	19.18	20.11	18.11	19.21	20.32	18.07	19.17	20.31	18.02	19.13	20.27								
	HI PR	133	144	156	139	150	162	147	158	170	154	166	179	160	175	188	160	175	191	159	175	191	158	174	191								
	LO PR	14	14	14	20	20	20	26	26	27	34	34	34	38	41	42	38	42	44	38	42	45	38	42	44								



<b>COOLING</b> Multiplying Factors for other Indoor Combinations		
Indoor Model	Capac. (MBh)	Power (AMPS)
<b>R2HM18</b>		
> FEM2X18****	1.00	1.00
<b>R2HM24</b>		
> FEM2X24****	1.00	1.00
FVM2X24****	1.00	1.00
<b>R2HM30</b>		
> FEM2X30****	1.00	1.00
FVM2X24****	0.99	0.99
<b>R2HM36</b>		
> FEM2X35****	1.00	1.00
FVM2X36****	0.99	0.99
<b>R2HM42</b>		
> FEM2X42****	1.00	1.00
FEM2X48****	0.98	0.98
FVM2X36****	0.98	0.98
<b>R2HM48</b>		
> FEM2X48****	1.00	1.00
FVM2X48****	1.00	1.00
<b>R2HM60</b>		
> FEM2X60****	1.00	1.00
FVM2X60****	1.00	1.00
<b>HEATING</b> Multiplying Factors for other Indoor Combinations		
Indoor Model	Capac. (MBh)	Power (AMPS)
<b>R2HM18</b>		
> FEM2X18****	1.00	1.00
<b>R2HM24</b>		
> FEM2X24****	1.00	1.00
FVM2X24****	0.98	0.96
<b>R2HM30</b>		
> FEM2X30****	1.00	1.00
FVM2X24****	0.95	0.93
<b>R2HM36</b>		
> FEM2X35****	1.00	1.00
FVM2X36****	0.98	0.98
<b>R2HM42</b>		
> FEM2X42****	1.00	1.00
FEM2X48****	0.95	0.95
FVM2X36****	0.98	0.99
<b>R2HM48</b>		
> FEM2X48****	1.00	1.00
FVM2X48****	0.99	1.01
<b>R2HM60</b>		
> FEM2X60****	1.00	1.00
FVM2X60****	0.98	0.99

**COOLING** Multiplying Factors for other Indoor Combinations

Indoor Model	Furnace Model	Capac. (MBh)	Power (AMPS)	Indoor Model	Furnace Model	Capac. (MBh)	Power (AMPS)	Indoor Model	Furnace Model	Capac. (MBh)	Power (AMPS)
<b>R2H318</b>											
>FEM2X18****		1.00	1.00								
<b>R2H324</b>											
>FEM2X24****		1.00	1.00	ED*2X24B**	MV08B15**B*	1.00	1.00	EHD2X24A**	*8MPV125	1.00	1.00
EB*2X24B**	*8MPV050	1.00	1.00	ED*2X24F**	*8MPV075	1.00	1.00	EHD2X24A**	*9MPV100	1.00	1.00
EB*2X24B**	MV08B15**B*	1.00	1.00	ED*2X24F**	*9MPV050	1.00	1.00	EHD2X24A**	*9MPV125	1.00	1.00
EB*2X24F**	*8MPV075	1.00	1.00	ED*2X24F**	*9MPV075	1.00	1.00	EHD2X24A**	MV08B15**B*	1.00	1.00
EB*2X24F**	*9MPV050	1.00	1.00	ED*2X24F**	MV12F19**B*	1.00	1.00	EHD2X24A**	MV12F19**B*	1.00	1.00
EB*2X24F**	*9MPV075	1.00	1.00	EHD2X24A**	*8MPV050	1.00	1.00	FVM2X24****		1.00	1.00
EB*2X24F**	MV12F19**B*	1.00	1.00	EHD2X24A**	*8MPV075	1.00	1.00				
ED*2X24B**	*8MPV050	1.00	1.00	EHD2X24A**	*8MPV100	1.00	1.00				
<b>R2H330</b>											
>FEM2X30****		1.00	1.00	EB*2X36J**	*9MPV100	0.99	0.99	ED*2X36J**	*9MPV100	0.99	0.99
EB*2X30B**	MV08B15**B*	0.99	0.99	ED*2X30B**	MV08B15**B*	0.99	0.99	EHD2X30A**	*8MPV075	0.99	0.99
EB*2X30F**	*8MPV075	0.99	0.99	ED*2X30F**	*8MPV075	0.99	0.99	EHD2X30A**	*8MPV100	0.99	0.99
EB*2X30F**	MV12F19**B*	0.99	0.99	ED*2X30F**	MV12F19**B*	0.99	0.99	EHD2X30A**	*8MPV125	0.99	0.99
EB*2X36B**	MV08B15**B*	0.99	0.99	ED*2X36B**	MV08B15**B*	0.99	0.99	EHD2X30A**	*9MPV100	0.99	0.99
EB*2X36F**	*8MPV075	0.99	0.99	ED*2X36F**	*8MPV075	0.99	0.99	EHD2X30A**	*9MPV125	0.99	0.99
EB*2X36F**	MV12F19**B*	0.99	0.99	ED*2X36F**	MV12F19**B*	0.99	0.99	EHD2X30A**	MV08B15**B*	0.99	0.99
EB*2X36J**	*8MPV100	0.99	0.99	ED*2X36J**	*8MPV100	0.99	0.99	EHD2X30A**	MV12F19**B*	0.99	0.99
EB*2X36J**	*8MPV125	0.99	0.99	ED*2X36J**	*8MPV125	0.99	0.99	FVM2X24****		0.99	0.99
<b>R2H336</b>											
>FEM2X35****		1.00	1.00	EB*2X42J**	*9MPV100	0.99	0.99	ED*2X42F**	MV12F19**B*	0.99	0.99
EB*2X36B**	MV08B15**B*	0.99	0.99	EB*2X42J**	MV16J22**B*	0.99	0.99	ED*2X42J**	*8MPV100	0.99	0.99
EB*2X36F**	MV12F19**B*	0.99	0.99	EB*2X42L**	*9MPV125	0.99	0.99	ED*2X42J**	*8MPV125	0.99	0.99
EB*2X36J**	*8MPV100	0.99	0.99	EB*2X42L**	MV20L24**B*	0.99	0.98	ED*2X42J**	*9MPV100	0.99	0.99
EB*2X36J**	*8MPV125	0.99	0.99	ED*2X36B**	MV08B15**B*	0.99	0.99	ED*2X42J**	MV16J22**B*	0.99	0.99
EB*2X36J**	*9MPV100	0.99	0.99	ED*2X36F**	MV12F19**B*	0.99	0.99	ED*2X42L**	*9MPV125	0.99	0.99
EB*2X36J**	MV16J22**B*	0.99	0.99	ED*2X36J**	*8MPV100	0.99	0.99	ED*2X42L**	MV20L24**B*	0.99	0.98

> Indicates Tested Indoor Model

- continued on next page -

COOLING Multiplying Factors for other Indoor Combinations (continued)											
Indoor Model	Furnace Model	Capac. (MBh)	Power (AMPS)	Indoor Model	Furnace Model	Capac. (MBh)	Power (AMPS)	Indoor Model	Furnace Model	Capac. (MBh)	Power (AMPS)
EB*2X42F**	*8MPV075	0.99	0.99	ED*2X36J**	*8MPV125	0.99	0.99	EHD2X36A**	*8MPV075	0.99	0.99
EB*2X42F**	MV12F19**B*	0.99	0.98	ED*2X36J**	*9MPV100	0.99	0.99	FVM2X36****		0.99	0.99
EB*2X42J**	*8MPV100	0.99	0.99	ED*2X36J**	MV16J22**B*	0.99	0.99				
EB*2X42J**	*8MPV125	0.99	0.99	ED*2X42F**	*8MPV075	0.99	0.99				
R2H342											
>FEM2X42****		1.00	1.00	ED*2X42J**	*8MPV100	0.98	0.98	EHD2X42A**	MV12F19**B*	0.98	0.98
EB*2X42F**	MV12F19**B*	0.98	0.98	ED*2X42J**	*8MPV125	0.98	0.98	EHD2X42A**	MV16J22**B*	0.98	0.98
EB*2X42J**	*8MPV100	0.98	0.98	ED*2X42J**	MV16J22**B*	0.98	0.98	EHD2X42A**	MV20L24**B*	0.98	0.98
EB*2X42J**	*8MPV125	0.98	0.98	ED*2X42L**	*9MPV125	0.98	0.98	EHD2X48A**	*8MPV075	0.98	0.98
EB*2X42J**	MV16J22**B*	0.98	0.98	ED*2X42L**	MV20L24**B*	0.98	0.98	EHD2X48A**	*8MPV100	0.98	0.98
EB*2X42L**	*9MPV125	0.98	0.98	ED*2X48J**	*8MPV100	0.98	0.98	EHD2X48A**	*8MPV125	0.98	0.98
EB*2X42L**	MV20L24**B*	0.98	0.98	ED*2X48J**	*8MPV125	0.98	0.98	EHD2X48A**	*9MPV100	0.98	0.98
EB*2X48F**	MV12F19**B*	0.98	0.98	ED*2X48J**	*9MPV100	0.98	0.98	EHD2X48A**	*9MPV125	0.98	0.98
EB*2X48J**	*8MPV100	0.98	0.98	ED*2X48J**	MV16J22**B*	0.98	0.98	EHD2X48A**	MV12F19**B*	0.98	0.98
EB*2X48J**	*8MPV125	0.98	0.98	ED*2X48L**	*9MPV125	0.98	0.98	EHD2X48A**	MV16J22**B*	0.98	0.98
EB*2X48J**	*9MPV100	0.98	0.98	ED*2X48L**	MV20L24**B*	0.98	0.98	EHD2X48A**	MV20L24**B*	0.98	0.98
EB*2X48J**	MV16J22**B*	0.98	0.98	EHD2X42A**	*8MPV100	0.98	0.98	FEM2X48****		0.98	0.98
EB*2X48L**	*9MPV125	0.98	0.98	EHD2X42A**	*8MPV125	0.98	0.98	FVM2X36****		0.98	0.98
EB*2X48L**	MV20L24**B*	0.98	0.98	EHD2X42A**	*9MPV100	0.98	0.98				
ED*2X42F**	MV12F19**B*	0.98	0.98	EHD2X42A**	*9MPV125	0.98	0.98				
R2H348											
>FEM2X48****		1.00	1.00	ED*2X48J**	MV16J22**B*	1.00	1.00	EHD2X48A**	MV20L24**B*	1.00	1.00
EB*2X48J**	MV16J22**B*	1.00	1.00	ED*2X48L**	MV20L24**B*	1.00	1.00	FVM2X48****		1.00	1.00
EB*2X48L**	MV20L24**B*	1.00	1.00	EHD2X48A**	MV16J22**B*	1.00	1.00				
R2H360											
>FEM2X60****		1.00	1.00	EHD2X60A**	MV20L24**B*	1.00	1.00	FVM2X60****		1.00	1.00
EHD2X60A**	MV16J22**B*	1.00	1.00								

> Indicates Tested Indoor Model

**HEATING** Multiplying Factors for other Indoor Combinations

Indoor Model	Furnace Model	Capac. (MBh)	Power (AMPS)	Indoor Model	Furnace Model	Capac. (MBh)	Power (AMPS)	Indoor Model	Furnace Model	Capac. (MBh)	Power (AMPS)
<b>R2H318</b>											
>FEM2X18****		1.00	1.00								
<b>R2H324</b>											
>FEM2X24****		1.00	1.00	ED*2X24B**	MV08B15**B*	0.98	0.97	EHD2X24A**	*8MPV125	0.98	0.95
EB*2X24B**	*8MPV050	0.98	0.98	ED*2X24F**	*8MPV075	0.98	0.96	EHD2X24A**	*9MPV100	0.98	0.97
EB*2X24B**	MV08B15**B*	0.98	0.97	ED*2X24F**	*9MPV050	0.98	0.98	EHD2X24A**	*9MPV125	0.98	0.96
EB*2X24F**	*8MPV075	0.98	0.96	ED*2X24F**	*9MPV075	0.98	0.98	EHD2X24A**	MV08B15**B*	0.98	0.96
EB*2X24F**	*9MPV050	0.98	0.98	ED*2X24F**	MV12F19**B*	0.98	0.97	EHD2X24A**	MV12F19**B*	0.98	0.96
EB*2X24F**	*9MPV075	0.98	0.98	EHD2X24A**	*8MPV050	0.98	0.98	FVM2X24****		0.98	0.96
EB*2X24F**	MV12F19**B*	0.98	0.97	EHD2X24A**	*8MPV075	0.98	0.97				
ED*2X24B**	*8MPV050	0.98	0.98	EHD2X24A**	*8MPV100	0.98	0.95				
<b>R2H330</b>											
>FEM2X30****		1.00	1.00	EB*2X36J**	*9MPV100	0.95	0.95	ED*2X36J**	*9MPV100	0.95	0.95
EB*2X30B**	MV08B15**B*	0.97	0.97	ED*2X30B**	MV08B15**B*	0.97	0.97	EHD2X30A**	*8MPV075	0.95	0.97
EB*2X30F**	*8MPV075	0.97	0.98	ED*2X30F**	*8MPV075	0.97	0.98	EHD2X30A**	*8MPV100	0.95	0.96
EB*2X30F**	MV12F19**B*	0.97	0.96	ED*2X30F**	MV12F19**B*	0.97	0.96	EHD2X30A**	*8MPV125	0.95	0.96
EB*2X36B**	MV08B15**B*	0.97	0.97	ED*2X36B**	MV08B15**B*	0.95	0.95	EHD2X30A**	*9MPV100	0.95	0.97
EB*2X36F**	*8MPV075	0.97	0.98	ED*2X36F**	*8MPV075	0.95	0.96	EHD2X30A**	*9MPV125	0.95	0.96
EB*2X36F**	MV12F19**B*	0.95	0.94	ED*2X36F**	MV12F19**B*	0.95	0.94	EHD2X30A**	MV08B15**B*	0.95	0.95
EB*2X36J**	*8MPV100	0.95	0.94	ED*2X36J**	*8MPV100	0.95	0.94	EHD2X30A**	MV12F19**B*	0.95	0.95
EB*2X36J**	*8MPV125	0.95	0.94	ED*2X36J**	*8MPV125	0.95	0.94	FVM2X24****		0.95	0.93
<b>R2H336</b>											
>FEM2X35****		1.00	1.00	EB*2X42J**	*9MPV100	0.98	0.97	ED*2X42F**	MV12F19**B*	0.98	0.96
EB*2X36B**	MV08B15**B*	0.98	0.98	EB*2X42J**	MV16J22**B*	0.98	0.95	ED*2X42J**	*8MPV100	0.98	0.96
EB*2X36F**	MV12F19**B*	0.98	0.96	EB*2X42L**	*9MPV125	0.98	0.96	ED*2X42J**	*8MPV125	0.98	0.96
EB*2X36J**	*8MPV100	0.98	0.97	EB*2X42L**	MV20L24**B*	0.98	0.95	ED*2X42J**	*9MPV100	0.98	0.97
EB*2X36J**	*8MPV125	0.98	0.96	ED*2X36B**	MV08B15**B*	0.98	0.98	ED*2X42J**	MV16J22**B*	0.98	0.95
EB*2X36J**	*9MPV100	0.98	0.97	ED*2X36F**	MV12F19**B*	0.98	0.96	ED*2X42L**	*9MPV125	0.98	0.96
EB*2X36J**	MV16J22**B*	0.98	0.96	ED*2X36J**	*8MPV100	0.98	0.97	ED*2X42L**	MV20L24**B*	0.98	0.95

> Indicates Tested Indoor Model

- continued on next page -

HEATING Multiplying Factors for other Indoor Combinations (continued)											
Indoor Model	Furnace Model	Capac. (MBh)	Power (AMPS)	Indoor Model	Furnace Model	Capac. (MBh)	Power (AMPS)	Indoor Model	Furnace Model	Capac. (MBh)	Power (AMPS)
EB*2X42F**	*8MPV075	0.98	0.98	ED*2X36J**	*8MPV125	0.98	0.96	EHD2X36A**	*8MPV075	0.98	0.97
EB*2X42F**	MV12F19**B*	0.98	0.96	ED*2X36J**	*9MPV100	0.98	0.97	FVM2X36****		0.98	0.98
EB*2X42J**	*8MPV100	0.98	0.96	ED*2X36J**	MV16J22**B*	0.98	0.96				
EB*2X42J**	*8MPV125	0.98	0.96	ED*2X42F**	*8MPV075	0.98	0.98				
R2H342											
>FEM2X42****		1.00	1.00	ED*2X42J**	*8MPV100	0.98	0.97	EHD2X42A**	MV12F19**B*	0.98	0.94
EB*2X42F**	MV12F19**B*	0.98	0.97	ED*2X42J**	*8MPV125	0.98	0.97	EHD2X42A**	MV16J22**B*	0.98	0.94
EB*2X42J**	*8MPV100	0.98	0.97	ED*2X42J**	MV16J22**B*	0.98	0.96	EHD2X42A**	MV20L24**B*	0.98	0.94
EB*2X42J**	*8MPV125	0.98	0.97	ED*2X42L**	*9MPV125	0.98	0.97	EHD2X48A**	*8MPV075	0.98	0.97
EB*2X42J**	MV16J22**B*	0.98	0.96	ED*2X42L**	MV20L24**B*	0.98	0.96	EHD2X48A**	*8MPV100	0.98	0.95
EB*2X42L**	*9MPV125	0.98	0.97	ED*2X48J**	*8MPV100	0.98	0.97	EHD2X48A**	*8MPV125	0.98	0.95
EB*2X42L**	MV20L24**B*	0.98	0.96	ED*2X48J**	*8MPV125	0.98	0.97	EHD2X48A**	*9MPV100	0.98	0.96
EB*2X48F**	MV12F19**B*	0.95	0.94	ED*2X48J**	*9MPV100	0.98	0.98	EHD2X48A**	*9MPV125	0.98	0.96
EB*2X48J**	*8MPV100	0.98	0.97	ED*2X48J**	MV16J22**B*	0.98	0.95	EHD2X48A**	MV12F19**B*	0.98	0.94
EB*2X48J**	*8MPV125	0.98	0.97	ED*2X48L**	*9MPV125	0.98	0.97	EHD2X48A**	MV16J22**B*	0.98	0.94
EB*2X48J**	*9MPV100	0.98	0.98	ED*2X48L**	MV20L24**B*	0.98	0.95	EHD2X48A**	MV20L24**B*	0.98	0.94
EB*2X48J**	MV16J22**B*	0.98	0.95	EHD2X42A**	*8MPV100	0.98	0.95	FEM2X48****		0.95	0.95
EB*2X48L**	*9MPV125	0.98	0.97	EHD2X42A**	*8MPV125	0.98	0.95	FVM2X36****		0.98	0.99
EB*2X48L**	MV20L24**B*	0.98	0.95	EHD2X42A**	*9MPV100	0.98	0.96				
ED*2X42F**	MV12F19**B*	0.98	0.97	EHD2X42A**	*9MPV125	0.98	0.96				
R2H348											
>FEM2X48****		1.00	1.00	ED*2X48J**	MV16J22**B*	1.00	1.00	EHD2X48A**	MV20L24**B*	1.00	0.99
EB*2X48J**	MV16J22**B*	1.00	1.00	ED*2X48L**	MV20L24**B*	1.00	1.00	FVM2X48****		0.99	1.01
EB*2X48L**	MV20L24**B*	1.00	1.00	EHD2X48A**	MV16J22**B*	1.00	0.99				
R2H360											
>FEM2X60****		1.00	1.00	EHD2X60A**	MV20L24**B*	1.00	0.99	FVM2X60****		0.98	0.99
EHD2X60A**	MV16J22**B*	1.00	0.99								

> Indicates Tested Indoor Model

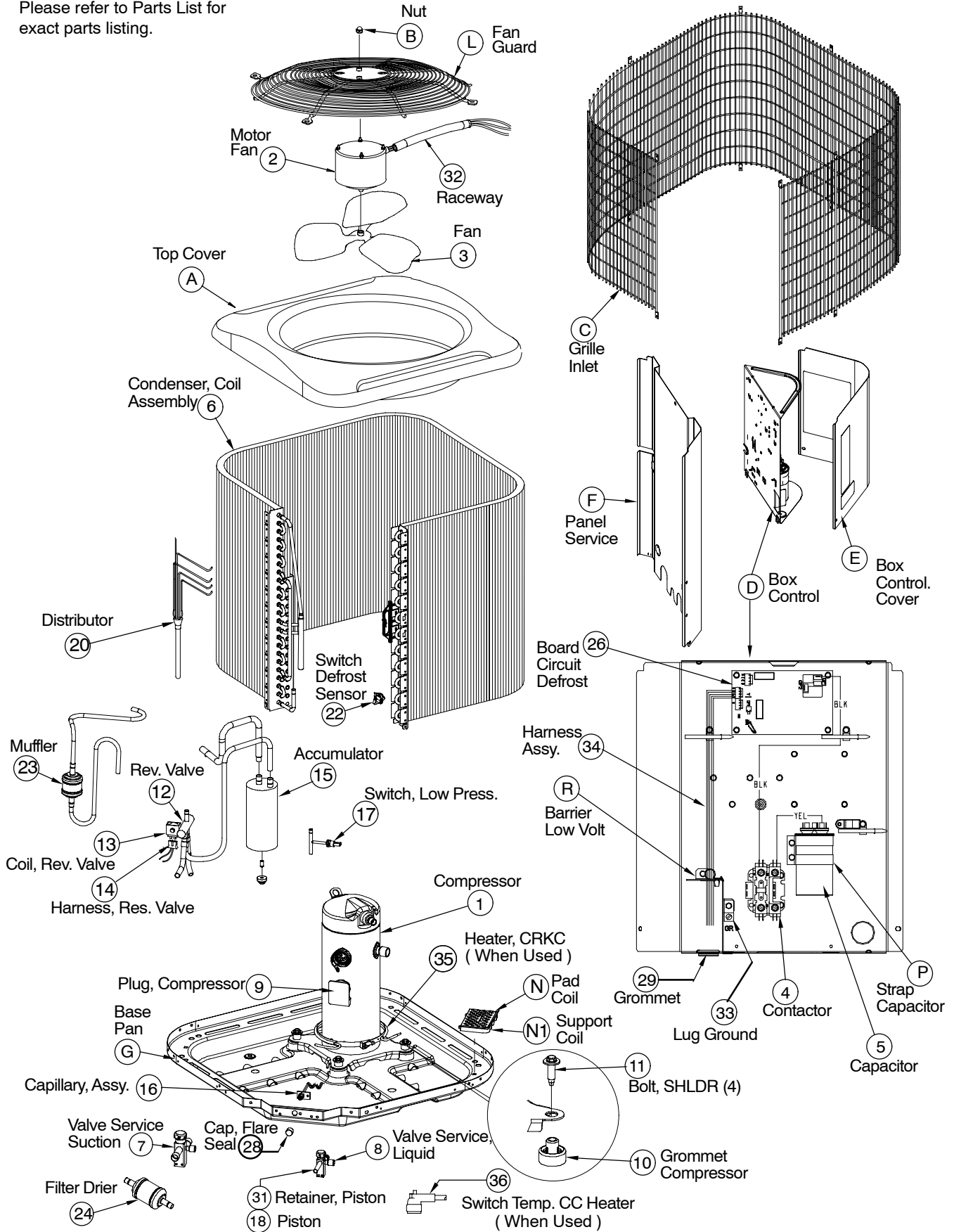
<b>COOLING</b> Multiplying Factors for other Indoor Combinations		
Indoor Model	Capac. (MBh)	Power (AMPS)
<b>WCH3182</b>		
>WAH*182A*	1.00	1.00
<b>WCH3242</b>		
>WAH*242A*	1.00	1.00
<b>WCH3302</b>		
>WAH*302A*	1.00	1.00
WAH*362A*	1.01	1.01
<b>WCH3362</b>		
>WAH*362A*	1.00	1.00
<b>WCH3422</b>		
>WAH*422A*	1.00	1.00
WAH*482A*	1.01	1.01
<b>WCH3482</b>		
>WAH*482A*	1.00	1.00
<b>WCH3602</b>		
>WAH*602A*	1.00	1.00

> Indicates Tested Indoor Model

<b>HEATING</b> Multiplying Factors for other Indoor Combinations		
Indoor Model	Capac. (MBh)	Power (AMPS)
<b>WCH3182</b>		
>WAH*182A*	1.00	1.00
<b>WCH3242</b>		
>WAH*242A*	1.00	1.00
<b>WCH3302</b>		
>WAH*302A*	1.00	1.00
WAH*362A*	0.97	1.00
<b>WCH3362</b>		
>WAH*362A*	1.00	1.00
<b>WCH3422</b>		
>WAH*422A*	1.00	1.00
WAH*482A*	0.95	0.95
<b>WCH3482</b>		
>WAH*482A*	1.00	1.00
<b>WCH3602</b>		
>WAH*602A*	1.00	1.00

> Indicates Tested Indoor Model

NOTE: This illustration is for reference only. Your unit may differ in appearance or may not include all components shown. Please refer to Parts List for exact parts listing.



R2HM - 1 Ph PARTS LIST									
KEY NO.	DESCRIPTION	FAST PARTS NO.							
			R2HM18AKA100	R2HM24AKA100	R2HM30AKA100	R2HM36AKA100	R2HM42AKA100	R2HM48AKA100	R2HM60AKA100
01	COMP ZR16K4-PFV-130	ZR16K4PFV130	1	-	-	-	-	-	-
01	COMP ZR22K4-PFV-130	ZR22K4PFV130	-	1	-	-	-	-	-
01	COMP ZR28K3-PFV-130	ZR28K3PFV130	-	-	1	-	-	-	-
01	COMP ZR34K3-PFV-130	ZR34K3PFV130	-	-	-	1	-	-	-
01	COMP ZR40K3-PFV-130	ZR40K3PFV130	-	-	-	-	1	-	-
01	COMP ZR54K3-PFV-130	ZR47K3PFV135	-	-	-	-	-	1	-
01	COMP ZR54K3-PFV-130	ZR54K3PFV130	-	-	-	-	-	-	1
02	MTR CND 1/230 1/12 1100	1172706	1	-	-	-	-	-	-
02	MTR CND 1/230 1/10 1100	1172707	-	1	-	-	-	-	-
02	MTR CND 1/230 1/10 1100	1173646	-	-	1	-	-	-	-
02	MTR CND 1/230 1/5	1172775	-	-	-	1	-	-	-
02	MTR CND 1/230 1/4	1172709	-	-	-	-	1	1	1
03	FAN C 18" 2B 1/2" 23 INT	1172027	1	-	-	-	-	-	-
03	FAN C 18" 3B 1/2" 26 INT	1174760	-	1	-	-	-	-	-
03	FAN C 24" 2B 1/2" 16 INT	1173874	-	-	1	-	-	-	-
03	FAN C 24" 2B 1/2" 18 INT	1172713	-	-	-	1	-	-	-
03	FAN C 24" 3B 1/2" 19 INT	1173854	-	-	-	-	1	1	1
04	CONTACTOR 1P 30A 24V W/SHUNT	1172472	1	1	1	1	1	1	-
04	CONTACTOR 1P 40A	1176763	-	-	-	-	-	-	1
05	CAP RN RD 370V 5+30	1172109	1	-	-	-	-	-	-
05	CAP RN RD 370V 5+35	1172110	-	1	-	-	-	-	-
05	CAP RN RD 370V 5+45	1172124	-	-	1	-	-	-	-
05	CAP RN RD 370V 5+50	1172111	-	-	-	1	-	-	-
05	CAP RN RD 370V 5+55	1172123	-	-	-	-	1	-	-
05	CAP RN RD 440V 5+60	1172144	-	-	-	-	-	1	-
05	CAP RN RD 370V 5+80	1172113	-	-	-	-	-	-	1
06	COIL ASY COND	1179260	1	-	-	-	-	-	-
06	COIL ASY COND	1179261	-	1	-	-	-	-	-
06	COIL ASY COND	1179262	-	-	1	-	-	-	-
06	COIL ASY COND	1179263	-	-	-	1	-	-	-
06	COIL ASY COND	1179264	-	-	-	-	1	-	-
06	COIL ASY COND	1179265	-	-	-	-	-	1	-
06	COIL ASY COND	1179266	-	-	-	-	-	-	1
07	VALVE SVC PARK SUC 12S-12S	1172726	1	1	1	-	-	-	-
07	VALVE SVC PARK SUC 14S-14S	1172727	-	-	-	1	1	1	1
08	VALVE SVC PARK LIQ 06S-06F	1173681	1	1	1	1	1	1	1
09	PLUG COMP WIRE (SM) 14GAx38"	1172729	1	-	1	-	-	-	-
09	PLUG COMP WIRE (SM) 52"	1174930	-	1	-	-	-	-	-
09	PLUG COMP WIRE (SM) 12GAx38"	1172730	-	-	-	1	-	-	-
09	PLUG COMP WIRE (SM) 12GAx44"	1172731	-	-	-	-	1	1	-
09	PLUG COMP WIRE (SM) 10GAx54"	1172732	-	-	-	-	-	-	1
10	GROMMET COMPRESSOR 1.62"DIA S	1171270	4	4	4	4	4	4	4
11	BOLT COMPRESSOR	1179201	4	4	4	4	4	4	4
12	VALVE REV W/COIL 24V	1173715	1	1	-	-	-	-	-
12	VALVE REVERSING	1175621	-	-	1	1	-	-	-
12	VALVE REVERSING	1175622	-	-	-	-	1	1	1
13	COIL REV VLV 24V	1172574	1	1	1	1	1	1	1
14	HARNESS ASSY 40" RVS PLUG	1175100	1	1	1	1	1	1	1
15	ACCUMULATOR	1173718	1	1	-	-	-	-	-
15	ACCUMULATOR 120 3/4 NH	1172018	-	-	1	-	-	-	-
15	ACCUMULATOR	1173713	-	-	-	1	-	-	-
15	ACCUMULATOR 174 IN3 7/8	1173714	-	-	-	-	1	-	-
15	ACCUMULATOR	1173719	-	-	-	-	-	1	-
15	ACCUMULATOR 247 7/8 5" DIA	1174939	-	-	-	-	-	-	1
16	CAPILLARY ASSY	1176766	1	1	-	-	-	-	-
16	CAPILLARY ASSY FORMED	1174096	-	-	1	1	1	1	1
17	SWITCH PRESSURE LOW	1175858	1	1	1	1	1	1	1
18	PISTON CHATLEFF .042	1173634	1	-	-	-	-	-	-
18	PISTON .052	1174060	-	1	-	-	-	-	-
18	PISTON CHATLEFF .057	1173658	-	-	1	-	-	-	-
18	PISTON .063	1174003	-	-	-	1	-	-	-



R2HM - 1 Ph PARTS LIST (continued)									
KEY NO.	DESCRIPTION	FAST PARTS NO.	R2HM18AKA100	R2HM24AKA100	R2HM30AKA100	R2HM36AKA100	R2HM42AKA100	R2HM48AKA100	R2HM60AKA100
18	PISTON CHATLEFF .067	1173867	-	-	-	-	1	-	-
18	PISTON CHATLEFF .073	1174017	-	-	-	-	-	1	-
18	PISTON .076	1173673	-	-	-	-	-	-	1
20	DISTRIBUTOR	1172020	1	-	-	-	-	-	-
20	DISTRIBUTOR	1172021	-	1	1	-	-	-	-
20	DISTRIBUTOR	1172022	-	-	-	1	-	-	-
20	DISTRIBUTOR	1173667	-	-	-	-	1	1	-
20	DISTRIBUTOR	1174007	-	-	-	-	-	-	1
22	SENSOR DEFROST O65 C32	1173637	1	1	1	1	1	1	1
23	MUFFLER	1173638	1	1	1	1	1	-	-
23	MUFFLER	1173668	-	-	-	-	-	1	1
24	DRIER BIFLOW 05 CI 3/8 SWEAT	1173639	1	1	1	1	1	1	1
26	CIRCUIT BOARD DEFROST	1177927	1	1	1	1	1	1	1
28	CAP FLARE	1172410	1	1	1	1	1	1	1
29	GROMMET	1171737	1	1	1	1	1	1	1
31	RETAINER PISTON	1173993	1	1	1	1	1	1	1
32	RACEWAY CARFLEX 7.5"	1174769	1	1	-	-	-	-	-
32	RACEWAY	1171428	-	-	1	1	1	1	1
33	LUG GROUND	1172300	1	1	1	1	1	1	1
34	HARNESS ASSY	1175084	1	1	1	1	1	1	1
35	HTR CC WP 40W240V	1172357	-	-	-	-	-	1	-
35	HTR CC WP 40W240V	1172358	-	-	-	-	-	-	1
36	SWITCH TEMP DISC O85 C65	1172359	-	-	-	-	-	1	1
A	TOP COVER ASSY	1176739	1	1	-	-	-	-	-
A	TOP COVER ASSY	1176738	-	-	1	1	1	1	1
B	NUT CAP HEX	1172740	1	1	1	1	1	1	1
C	INLET GRILLE MINI	1177080	1	-	-	-	-	-	-
C	GRILLE INLET MINI	1177791	-	1	-	-	-	-	-
C	GRILLE INLET MEDIUM	1177792	-	-	1	-	-	1	-
C	INLET GRILLE MEDIUM	1177082	-	-	-	1	-	-	-
C	GRILLE INLET MEDIUM	1177793	-	-	-	-	1	-	-
C	INLET GRILLE MEDIUM	1177084	-	-	-	-	-	-	1
D	BOX CONTROL	1179268	1	1	1	1	1	1	1
E	KIT CONTROL BOX COVER	1179267	1	1	1	1	1	1	1
F	SERVICE PANEL	1176740	1	-	1	-	-	1	-
F	SERVICE PANEL	1176742	-	1	-	-	-	-	-
F	SERVICE PANEL	1176741	-	-	-	1	-	-	-
F	SERVICE PANEL	1176743	-	-	-	-	1	-	-
F	PANEL SERVICE	1176780	-	-	-	-	-	-	1
G	BASE PAN ASSY	1176737	1	1	-	-	-	-	-
G	BASE PAN	1176764	-	-	1	1	1	1	1
L	GUARD FAN	1179199	1	1	-	-	-	-	-
L	GUARD FAN	1179200	-	-	1	1	1	1	1
N	SUPPORT COIL	1174068	3	3	5	5	5	5	5
P	CLAMP CAPACITOR ROUND 2.0"D	1172734	1	1	1	1	-	-	-
P	CLAMP CAPACITOR ROUND 2.5"D	1172735	-	-	-	-	1	1	1
R	BARRIER LOW VOLTAGE	1176762	1	1	1	1	1	1	1
Parts Not Shown									
)	CLIP ACCUM	1173640	1	1	1	1	1	1	1
)	STRAINER	1171768	1	1	1	1	1	1	1
)	CAP SERVICE KIT 11/16-20	1175650	1	1	1	1	1	1	1
)	CAP SERVICE KIT 15/16-20	1175651	1	1	1	1	-	-	-
)	CAP SERVICE KIT 1-1/16-20	1175652	-	-	-	-	1	1	1
)	GROMMET ACCUMULATOR CUSHION	1172806	1	1	1	1	1	1	1
)	SCREW 10 X 1/2 25 PACK	1174880	1	1	1	1	1	1	1
)	SCREW HEX HD 10AB X 3/8	1176782	10	10	10	10	10	10	10
)	SCREW HEX HD 12AB X 5/8	1176781	4	4	4	4	4	4	4
)	KIT PISTON TOOL BODY RESIZER	1175477	1	1	1	1	1	1	1
)	PAINT TOUCH UP 1 PT DARK GRAY	1174762	1	1	1	1	1	1	1

R2HM - 3 Ph PARTS LIST					
KEY NO.	DESCRIPTION	FAST PARTS NO.	R2HM36AHA100	R2HM48AHA100	R2HM60AHA100
01	COMP ZR34K3-TF5-130	ZR34K3TF5130	1	-	-
01	COMP ZR47K3-TF5-130	ZR47K3TF5135	-	1	-
01	COMP ZR54K3-TF5-130	ZR54K3TF5130	-	-	1
02	MTR CND 1/230 1/5	1172775	1	-	-
02	MTR CND 1/230 1/4	1172709	-	1	1
03	FAN C 24" 2B 1/2" 18 INT	1172713	1	-	-
03	FAN C 24" 3B 1/2" 19 INT	1173854	-	1	1
04	CONTACTOR 2P 30A 24V	1173785	1	1	1
05	CAP RN OV 370V 5	1171727	1	1	1
06	COIL ASY COND	1179263	1	-	-
06	COIL ASY COND	1179265	-	1	-
06	COIL ASY COND	1179266	-	-	1
07	VALVE SVC PARK SUC 14S-14S	1172727	1	1	1
08	VALVE SVC PARK LIQ 06S-06F	1173681	1	1	1
09	PLUG COMPRESSOR 3PH MONITOR	1174082	1	1	1
10	GROMMET COMPRESSOR 1.62"DIA S	1171270	4	4	4
11	BOLT COMPRESSOR	1179201	4	4	4
12	VALVE REVERSING	1175621	1	-	-
12	VALVE REVERSING	1175622	-	1	1
13	COIL REV VLV 24V	1172574	1	1	1
14	HARNESS ASSY 40" RVS PLUG	1175100	1	1	1
15	ACCUMULATOR	1173713	1	-	-
15	ACCUMULATOR	1173719	-	1	-
15	ACCUMULATOR 247 7/8 5" DIA	1174939	-	-	1
16	CAPILLARY ASSY FORMED	1174096	1	1	1
17	SWITCH PRESSURE LOW	1175858	1	1	1
18	PISTON .063	1174003	1	-	-
18	PISTON CHATLEFF .073	1174017	-	1	-
18	PISTON .076	1173673	-	-	1
20	DISTRIBUTOR	1172022	1	-	-
20	DISTRIBUTOR	1173667	-	1	-
20	DISTRIBUTOR	1174007	-	-	1
22	SENSOR DEFROST O65 C32	1173637	1	1	1
23	MUFFLER	1173638	1	-	-
23	MUFFLER	1173668	-	1	1
24	DRIER BIFLOW 05 CI 3/8 SWEAT	1173639	1	1	1
26	CIRCUIT BOARD DEFROST	1177927	1	1	1
28	CAP FLARE	1172410	1	1	1
29	GROMMET	1171737	1	1	1
31	RETAINER PISTON	1173993	1	1	1
32	RACEWAY	1171428	1	1	1
33	LUG GROUND	1172300	1	1	1
34	HARNESS ASSY	1175084	1	1	1
35	HTR CC WP 40W240V	1172357	-	1	-
35	HTR CC WP 40W240V	1172358	-	-	1
36	SWITCH TEMP DISC O85 C65	1172359	-	1	1
37	RELAY PHASE MONITOR	1173408	1	1	1
A	TOP COVER ASSY	1176738	1	1	1
B	NUT CAP HEX	1172740	1	1	1
C	GRILLE INLET MEDIUM	1177792	-	1	-
C	INLET GRILLE MEDIUM	1177082	1	-	-
C	INLET GRILLE MEDIUM	1177084	-	-	1
D	BOX CONTROL	1179268	1	1	1

R2HM - 3 Ph PARTS LIST (continued)					
KEY NO.	DESCRIPTION	FAST PARTS NO.	R2HM36AHA100	R2HM48AHA100	R2HM60AHA100
E	KIT CONTROL BOX COVER	1179300	1	1	1
F	SERVICE PANEL	1176740	-	1	-
F	SERVICE PANEL	1176741	1	-	-
F	PANEL SERVICE	1176780	-	-	1
G	BASE PAN	1176764	1	1	1
L	GUARD FAN	1179200	1	1	1
N	SUPPORT COIL	1174068	5	5	5
P	STRAP CAPACITOR	1174073	1	1	1
R	BARRIER LOW VOLTAGE	1176762	1	1	1
<b>Parts Not Shown</b>					
)	CLIP ACCUM	1173640	1	1	1
)	STRAINER	1171768	1	1	1
)	CAP SERVICE KIT 11/16-20	1175650	1	1	1
)	CAP SERVICE KIT 15/16-20	1175651	1	-	-
)	CAP SERVICE KIT 1-1/16-20	1175652	-	1	1
)	GROMMET ACCUMULATOR CUSHION	1172806	1	1	1
)	SCREW 10 X 1/2 25 PACK	1174880	1	1	1
)	SCREW HEX HD 10AB X 3/8	1176782	10	10	10
)	SCREW HEX HD 12AB X 5/8	1176781	4	4	4
)	KIT PISTON TOOL BODY RESIZER	1175477	1	1	1
)	PAINT TOUCH UP 1 PT DARK GRAY	1174762	1	1	1

R2H3 PARTS LIST																
KEY NO.	DESCRIPTION	PART NO.	R2H318AKC100	R2H318GKC100	R2H324AKC100	R2H324GKC100	R2H330AKC100	R2H330GKC100	R2H336AKC100	R2H336GKC100	R2H342AKC100	R2H342GKC100	R2H348AKC100	R2H348GKC100	R2H360AKC100	R2H360GKC100
01	COMPRESSOR	ZR16KAPFV130	1	1	-	-	-	-	-	-	-	-	-	-	-	-
01	COMPRESSOR	ZR21KAPFV130	-	-	1	1	-	-	-	-	-	-	-	-	-	-
01	COMPRESSOR	ZR26KAPFV130	-	-	-	-	1	1	-	-	-	-	-	-	-	-
01	COMPRESSOR	ZR32KAPFV130	-	-	-	-	-	-	1	1	-	-	-	-	-	-
01	COMPRESSOR	ZR38KAPFV130	-	-	-	-	-	-	-	-	1	1	-	-	-	-
01	COMPRESSOR	ZR44KAPFV130	-	-	-	-	-	-	-	-	-	-	1	1	-	-
01	COMPRESSOR	ZR54KAPFV130	-	-	-	-	-	-	-	-	-	-	-	-	1	1
02	MOTOR CONDENSER FAN	1172706	1	1	1	1	-	-	-	-	-	-	-	-	-	-
02	MOTOR CONDENSER FAN	1172707	-	-	-	-	1	1	-	-	-	-	-	-	-	-
02	MOTOR CONDENSER FAN	1172775	-	-	-	-	-	-	1	1	-	-	-	-	-	-
02	MOTOR CONDENSER FAN	1172709	-	-	-	-	-	-	-	-	1	1	1	1	1	1
03	FAN BLADE	1172027	1	1	1	1	-	-	-	-	-	-	-	-	-	-
03	FAN BLADE	1174760	-	-	-	-	1	1	-	-	-	-	-	-	-	-
03	FAN BLADE	1172713	-	-	-	-	-	-	1	1	-	-	-	-	-	-
03	FAN BLADE	1173854	-	-	-	-	-	-	-	-	1	1	1	1	1	1
04	CONTACTOR 30 AMP	1172472	1	1	1	1	1	1	1	1	1	1	1	1	-	-
04	40 AMP	1176763	-	-	-	-	-	-	-	-	-	-	-	-	1	1
04	CAPACITOR 370V 30+5 MFD	1172109	1	1	-	-	-	-	-	-	-	-	-	-	-	-
05	CAPACITOR 370V 35+5 MFD	1172110	-	-	1	1	-	-	-	-	-	-	-	-	-	-
05	CAPACITOR 370V 45+5 MFD	1172124	-	-	-	-	1	1	-	-	-	-	-	-	-	-
05	50+5 MFD 370V	1172111	-	-	-	-	-	-	1	1	-	-	-	-	-	-
05	55+5 MFD 370V	1172123	-	-	-	-	-	-	-	-	1	1	-	-	-	-
05	60+5 MFD 370V	1172112	-	-	-	-	-	-	-	-	-	-	1	1	-	-
05	80+5 MFD 370V	1172113	-	-	-	-	-	-	-	-	-	-	-	-	1	1
06	KIT CONDENSER COIL	1176754	1	1	-	-	-	-	-	-	-	-	-	-	-	-
06	KIT CONDENSER COIL	1176755	-	-	1	1	-	-	-	-	-	-	-	-	-	-
06	KIT CONDENSER COIL	1176756	-	-	-	-	1	1	-	-	-	-	-	-	-	-
06	KIT CONDENSER COIL	1176757	-	-	-	-	-	-	1	1	-	-	-	-	-	-
06	KIT CONDENSER COIL	1176758	-	-	-	-	-	-	-	-	1	1	-	-	-	-
06	KIT CONDENSER COIL	1176759	-	-	-	-	-	-	-	-	-	-	1	1	-	-
06	KIT CONDENSER COIL	1176760	-	-	-	-	-	-	-	-	-	-	-	-	1	1
07	SERVICE VALVE SUCTION	1172726	1	1	1	1	1	1	-	-	-	-	-	-	-	-
07	SERVICE VALVE SUCTION	1172727	-	-	-	-	-	-	1	1	1	1	1	1	1	1
08	SERVICE VALVE LIQUID	1172792	1	1	1	1	1	1	1	1	1	1	1	1	1	1
09	PLUG COMPRESSOR	1172729	1	1	1	1	1	1	-	-	-	-	-	-	-	-
09	PLUG COMPRESSOR	1172730	-	-	-	-	-	-	1	1	1	1	-	-	-	-
09	PLUG COMPRESSOR	1172731	-	-	-	-	-	-	-	-	-	-	1	1	-	-
09	PLUG COMPRESSOR	1172732	-	-	-	-	-	-	-	-	-	-	-	-	1	1
10	GROMMET COMPRESSOR	1171270	4	4	4	4	4	4	4	4	4	4	4	4	4	4
11	BOLT COMPRESSOR	1173630	4	4	4	4	4	4	4	4	4	4	4	4	4	4
32	RACEWAY	1174769	1	1	1	1	1	1	-	-	-	-	-	-	-	-
32	RACEWAY	1171428	-	-	-	-	-	-	1	1	1	1	1	1	1	1
33	LUG GROUND	1172300	1	1	1	1	1	1	1	1	1	1	1	1	1	1
A	PANEL TOP	1176739	1	1	1	1	1	1	-	-	-	-	-	-	-	-
A	PANEL TOP	1176738	-	-	-	-	-	-	1	1	1	1	1	1	1	1

- continued on next page -

R2H3 PARTS LIST (continued)																
KEY NO.	DESCRIPTION	PART NO.	R2H318AKC100	R2H318GKC100	R2H324AKC100	R2H324GKC100	R2H330AKC100	R2H330GKC100	R2H336AKC100	R2H336GKC100	R2H342AKC100	R2H342GKC100	R2H348AKC100	R2H348GKC100	R2H360AKC100	R2H360GKC100
B	NUT HEX	1172740	4	4	4	4	4	4	4	4	4	4	4	4	4	4
C	GRILLE INLET	1176986	-	1	-	-	-	-	-	-	-	-	-	-	-	-
C	GRILLE INLET	1176988	-	-	-	-	-	1	-	-	-	-	-	1	-	-
C	GRILLE INLET	1176989	-	-	-	-	-	-	-	1	-	-	-	-	-	-
C	GRILLE INLET	1176990	-	-	-	-	-	-	-	-	-	1	-	-	-	-
C	GRILLE INLET	1176991	-	-	-	-	-	-	-	-	-	-	-	-	-	1
C	GRILLE INLET	1176992	-	-	-	1	-	-	-	-	-	-	-	-	-	-
C	GRILLE INLET	1177080	1	-	-	-	-	-	-	-	-	-	-	-	-	-
C	GRILLE INLET	1177082	-	-	-	-	-	-	1	-	-	-	-	-	-	-
C	GRILLE INLET	1177084	-	-	-	-	-	-	-	-	-	-	-	-	1	-
C	GRILLE INLET	1177791	-	-	1	-	-	-	-	-	-	-	-	-	-	-
C	GRILLE INLET	1177792	-	-	-	-	1	-	-	-	-	-	1	-	-	-
C	GRILLE INLET	1177793	-	-	-	-	-	-	-	-	1	-	-	-	-	-
D	BOX CONTROL	1176761	1	1	1	1	1	1	1	1	1	1	1	1	1	1
E	KIT COVER CONTROL BOX	1176753	1	1	1	1	1	1	1	1	1	1	1	1	1	1
F	PANEL SERVICE	1176740	1	1	-	-	-	-	1	1	-	-	-	-	-	-
F	PANEL SERVICE	1176741	-	-	1	1	1	1	-	-	-	-	-	-	-	-
F	PANEL SERVICE	1176742	-	-	-	-	-	-	-	-	1	1	-	-	-	-
F	PANEL SERVICE	1176744	-	-	-	-	-	-	-	-	-	-	1	1	-	-
F	PANEL SERVICE	1176743	-	-	-	-	-	-	-	-	-	-	-	-	1	1
G	PAN BASE	1176737	1	1	1	1	1	1	-	-	-	-	-	-	-	-
G	PAN BASE	1176764	-	-	-	-	-	-	1	1	1	1	1	1	1	1
L	GUARD FAN	1176745	1	1	1	1	1	1	-	-	-	-	-	-	-	-
L	GUARD FAN	1176746	-	-	-	-	-	-	1	1	1	1	1	1	1	1
N	SUPPORT COIL	1174068	3	3	3	3	3	3	5	5	5	5	5	5	5	5
P	STRAP CAPACITOR	1172734	1	1	1	1	1	1	1	1	-	-	-	-	-	-
P	STRAP CAPACITOR	1172735	-	-	-	-	-	-	-	-	1	1	1	1	1	1
R	GROMMET	1171737	1	1	1	1	1	1	1	1	1	1	1	1	1	1
T	BARRIER LOW VOLTAGE	1176762	1	1	1	1	1	1	1	1	1	1	1	1	1	1
Parts Not Shown																
)	( PAINT TOUCH UP 1PT	1174762	1	1	1	1	1	1	1	1	1	1	1	1	1	1
)	( CAP SERVICE KIT 11/16-20	1175650	1	1	1	1	1	1	1	1	1	1	1	1	1	1
)	( CAP SERVICE KIT 15/16-20	1175651	1	1	1	1	1	1	1	1	-	-	-	-	-	-
)	( CAP SERVICE KIT 1-1/16-20	1175652	-	-	-	-	-	-	-	-	1	1	1	1	1	1
)	( DISTRUBITOR	1172021	-	-	-	-	-	-	-	-	1	1	-	-	-	-
)	( DISTRUBITOR	1172022	-	-	-	-	-	-	-	-	-	-	1	1	-	-
)	( DISTRUBITOR	1173667	-	-	-	-	-	-	-	-	-	-	-	-	1	1
)	( SCREW 10 X 1/2 25 PACK	1174880	1	1	1	1	1	1	1	1	1	1	1	1	1	1
)	( SCREW HEX HD 10AB 3/8	1176782	10	10	10	10	10	10	10	10	10	10	10	10	10	10
)	( SCREW HEX HD 12AB 5/8	1176781	4	4	4	4	4	4	4	4	4	4	4	4	4	4

WCH3**2 PARTS LIST									
KEY NO.	DESCRIPTION	PART NO.	WCH3182GKA1	WCH3242GKA1	WCH3302GKA1	WCH3362GKA1	WCH3422GKA1	WCH3482GKA1	WCH3602GKA1
01	COMPRESSOR	ZR16KAPFV130	1	-	-	-	-	-	-
01	COMPRESSOR	ZR21KAPFV130	-	1	-	-	-	-	-
01	COMPRESSOR	ZR26KAPFV130	-	-	1	-	-	-	-
01	COMPRESSOR	ZR32KAPFV130	-	-	-	1	-	-	-
01	COMPRESSOR	ZR38KAPFV130	-	-	-	-	1	-	-
01	COMPRESSOR	ZR44KAPFV130	-	-	-	-	-	1	-
01	COMPRESSOR	ZR54KAPFV130	-	-	-	-	-	-	1
02	MOTOR CONDENSER FAN	1172706	1	1	-	-	-	-	-
02	MOTOR CONDENSER FAN	1172707	-	-	1	-	-	-	-
02	MOTOR CONDENSER FAN	1172775	-	-	-	1	-	-	-
02	MOTOR CONDENSER FAN	1172709	-	-	-	-	1	1	1
03	FAN BLADE	1172027	1	1	-	-	-	-	-
03	FAN BLADE	1174760	-	-	1	-	-	-	-
03	FAN BLADE	1172713	-	-	-	1	-	-	-
03	FAN BLADE	1173854	-	-	-	-	1	1	1
04	CONTACTOR 30 AMP	1172472	1	1	1	1	1	1	-
04	40 AMP	1176763	-	-	-	-	-	-	1
04	CAPACITOR 370V 30+5 MFD	1172109	1	-	-	-	-	-	-
05	CAPACITOR 370V 35+5 MFD	1172110	-	1	-	-	-	-	-
05	CAPACITOR 370V 45+5 MFD	1172124	-	-	1	-	-	-	-
05	50+5 MFD 370V	1172111	-	-	-	1	-	-	-
05	55+5 MFD 370V	1172123	-	-	-	-	1	-	-
05	60+5 MFD 370V	1172112	-	-	-	-	-	1	-
05	80+5 MFD 370V	1172113	-	-	-	-	-	-	1
06	KIT CONDENSER COIL	1176754	1	-	-	-	-	-	-
06	KIT CONDENSER COIL	1176755	-	1	-	-	-	-	-
06	KIT CONDENSER COIL	1176756	-	-	1	-	-	-	-
06	KIT CONDENSER COIL	1176757	-	-	-	1	-	-	-
06	KIT CONDENSER COIL	1176758	-	-	-	-	1	-	-
06	KIT CONDENSER COIL	1176759	-	-	-	-	-	1	-
06	KIT CONDENSER COIL	1176760	-	-	-	-	-	-	1
07	SERVICE VALVE SUCTION	1172726	1	1	1	-	-	-	-
07	SERVICE VALVE SUCTION	1172727	-	-	-	1	1	1	1
08	SERVICE VALVE LIQUID	1172792	1	1	1	1	1	1	1
09	PLUG COMPRESSOR HARNESS	1172729	1	1	1	-	-	-	-
09	PLUG COMPRESSOR HARNESS	1172730	-	-	-	1	1	-	-
09	PLUG COMPRESSOR HARNESS	1172731	-	-	-	-	-	1	-
09	PLUG COMPRESSOR HARNESS	1172732	-	-	-	-	-	-	1
10	GROMMET COMPRESSOR	1171270	4	4	4	4	4	4	4
11	BOLT COMPRESSOR MOUNTING	1173630	4	4	4	4	4	4	4
32	RACEWAY	1174769	1	1	1	-	-	-	-
32	RACEWAY	1171428	-	-	-	1	1	1	1
33	LUG GROUND	1172300	1	1	1	1	1	1	1
A	PANEL TOP	1176739	1	1	1	-	-	-	-

- continued on next page -

WCH3**2 PARTS LIST (continued)									
KEY NO.	DESCRIPTION	PART NO.	WCH3182GKA1	WCH3242GKA1	WCH3302GKA1	WCH3362GKA1	WCH3422GKA1	WCH3482GKA1	WCH3602GKA1
A	PANEL TOP	1176738	-	-	-	1	1	1	1
B	NUT HEX	1172740	4	4	4	4	4	4	4
C	GRILLE INLET	1176986	1	-	-	-	-	-	-
C	GRILLE INLET	1176988	-	-	1	-	-	1	-
C	GRILLE INLET	1176989	-	-	-	1	-	-	-
C	GRILLE INLET	1176990	-	-	-	-	1	-	-
C	GRILLE INLET	1176991	-	-	-	-	-	-	1
C	GRILLE INLET	1176992	-	1	-	-	-	-	-
D	BOX CONTROL	1176761	1	1	1	1	1	1	1
E	KIT COVER CONTROL BOX	1176753	1	1	1	1	1	1	1
F	PANEL SERVICE	1176740	1	-	-	1	-	-	-
F	PANEL SERVICE	1176741	-	1	1	-	-	-	-
F	PANEL SERVICE	1176742	-	-	-	-	1	-	-
F	PANEL SERVICE	1176744	-	-	-	-	-	1	-
F	PANEL SERVICE	1176743	-	-	-	-	-	-	1
G	PAN BASE	1176737	1	1	1	-	-	-	-
G	PAN BASE	1176764	-	-	-	1	1	1	1
L	GUARD FAN	1176745	1	1	1	-	-	-	-
L	GUARD FAN	1176746	-	-	-	1	1	1	1
N	SUPPORT COIL	1174068	3	3	3	5	5	5	5
P	STRAP CAPACITOR	1172734	1	1	1	1	-	-	-
P	STRAP CAPACITOR	1172735	-	-	-	-	1	1	1
R	GROMMET	1171737	1	1	1	1	1	1	1
T	BARRIER LOW VOLTAGE	1176762	1	1	1	1	1	1	1
Parts Not Shown									
)	CAP SERVICE KIT 11/16-20	1175650	1	1	1	1	1	1	1
)	CAP SERVICE KIT 15/16-20	1175651	1	1	1	1	-	-	-
)	CAP SERVICE KIT 1-1/16-20	1175652	-	-	-	-	1	1	1
)	DISTRUBITOR	1172021	-	-	-	-	1	-	-
)	DISTRUBITOR	1172022	-	-	-	-	-	1	-
)	DISTRUBITOR	1173667	-	-	-	-	-	-	1
)	PAINT TOUCH UP 1PT	1174762	1	1	1	1	1	1	1
)	SCREW 10 X 1/2 25 PACK	1174880	1	1	1	1	1	1	1
)	SCREW HEX HD 10AB 3/8	1176782	10	10	10	10	10	10	10
)	SCREW HEX HD 12AB 5/8	1176781	4	4	4	4	4	4	4