

Parts List, Tech Labels, Wiring Diagrams

PHE072 - 120 SERIES

PACKAGE HEAT PUMP UNITS



TABLE OF CONTENTS

PARTS LIST-----	2-10
PARTS DRAWING-----	11-14
CHARGING CHARTS--	15-18
WIRING DIAGRAMS---	19-26



PHE072 PARTS LIST

KEY NO.	DESCRIPTION	FAST PARTS NO.	PHE072H000AA	PHE072L000AA
01	CONTACTOR	1171554	1	1
02	TRANSFORMER	1171496	1	1
03	CAPACITOR	1171807	1	1
04	RELAY	1171809	1	1
05	TERMINAL BOARD	1171488	1	1
06	BLOWER ASY	1175283	1	1
07	BEARING	1175424	2	2
08	WHEEL,BLOWER	1175318	1	1
09	KEY	1175493	1	1
10	MOTOR,INDOOR	1175478	1	1
11	PULLEY,BLOWER	1175314	1	1
12	PULLEY,MOTOR	1175494	1	1
13	BELT	1170556	1	1
14	COIL ASY,FORMED	1175349	1	1
15	COIL ASY	1175346	1	1
16	CONDUIT	1171428	1	1
17	FILTER	1175312	4	4
18	MOTOR,OUTDOOR	1171335	1	1
19	PROPELLER,FAN	1171220	1	1
20	SWITCH,LIMIT	1171483	1	1
21	COMP SRY752AE	1172107	1	1
22	SWITCH,THERMAL	1171252	1	1
52	SWITCH,PRESSURE	1171805	1	1
53	SWITCH,PRESSURE	1175321	1	1
55	CIRCUIT BREAKER	1171114	1	1
56	RELAY	1171433	1	1
58	TERMINAL BLOCK	1171487	1	1
59	CIRCUIT BOARD	1171190	1	1
62	SWITCH,TEMP	1171481	1	1
63	VALVE,4WAY	1173709	1	1
64	ACCUMULATOR	1171556	1	1
67	COIL, 4-WAY VLV	1172619	1	1
68	VALVE,CHECK	1171113	1	1
69	STRAINER	1171463	1	1
A	SCROLL,FAN	1175260	1	1
B	STRAP,CAPACITOR	1171552	1	1
C	CONTROL BOX	1175257	1	1
D	PLATE,WIRING	1171373	1	1
E	SUPPORT BRACKET	1175483	1	1
F	BRACKET ASY	1175423	2	2
G	PANEL ASY	1175229	1	1
H	POST,CORNER	1175230	2	2
J	POST,CORNER	1175255	1	1
K	PAN ASY	1175243	1	1
L	POST,CORNER	1175256	1	1
M	DECK,FAN	1175259	1	1
N	BRACKET, COIL	1171070	1	1
P	PLATE,MOUNTING	1175270	1	1
Q	COVER ASY	1175280	1	1
R	BASE PAN ASY	1175231	1	1
S	BRACKET,BASE	1171071	2	2
T	GUARD,BASERAIL	1175263	1	1
U	RAIL,BASE	1175265	1	1

PHE072 PARTS LIST (continued)

KEY NO.	DESCRIPTION	FAST PARTS NO.	PHE072H000AA	PHE072L000AA
V	RAIL,BASE	1175266	1	1
W	RAIL,BASE	1175279	1	1
Y	GRILLE,OUTLET	1171267	1	1
Z	COVER,CONTROL	1171169	1	1
AB	PANEL ASY	1175226	1	1
AC	COVER ASY	1175227	1	1
AD	COVER,SUPPLY	1175228	1	1
AE	PANEL,ACCESS	1175293	1	1
AF	POST,CENTER	1175331	1	1
AG	PARTITION,GAS	1175292	1	1
AH	BRACKET,COIL	1175262	1	1
AJ	PANEL,OUTDOOR	1171846	1	1
AK	GROMMET	1171270	4	4
AL	PANEL ASY	1175241	1	1
AM	PANEL ASY	1175242	1	1
BF	PANEL,ACCESS	1175341	1	1
BK	POST,CENTER	1175254	1	1
BL	FRAME ASY	1175238	1	1
BP	PLATE ASY, MTR MTG	1175664	1	1
BQ	BRACKET,MOUNT	1175335	1	1
BR	PANEL,BLOCKOFF	1175337	1	1
BS	COVER,HEAT	1175332	2	2
BT	BRACKET,HEAT	1175333	1	1
BU	PANEL,COIL	1175327	1	1
BV	BASE PAN ASY	1175328	1	1
CA	PLATE,BLOCKOFF	1175294	1	1
PARTS NOT SHOWN				
)	HARNESS ASY	1175343	1	1
)	HARNESS ASY	1175344	1	1
)	PLUG,WIRING ASY	1175342	1	1
)	HARNESS ASY	1175663	1	1
)	PLUG ASY	1171405	1	1

PHE090 PARTS LIST				
KEY NO.	DESCRIPTION	FAST PART NO.	PHE090H000AA	PHE090L000AA
1	PANEL INDOOR END	1171375	1	1
2	COVER SUPPLY AIR	1171182	1	1
3	COVER RETURN AIR	1171181	1	1
4	PANEL INDOOR FAN ACCESS	1171004	1	1
5	POST CORNER	1171175	2	2
6	POST CENTER FILTER ACCESS	1171406	1	1
7	PANEL FILTER ACCESS LOWER	1171382	*	1
8	POST CORNER	1171173	1	1
9	POST CORNER	1171177	1	1
10	POST CENTER COMP ACCESS	1171110	1	1
11	COVER ASY TOP	1171365	1	1
12	PANEL OUTDOOR ACCESS	1171003	1	1
12	VALVE REV W/COIL 24V	1171509	2	*
13	PANEL CONTROL BOX ACCESS	1171362	1	1
14	PANEL FILTER ACCESS	1171386	1	1
15	PANEL END SKIRT	1171206	1	1
16	RAIL BASE	1171031	1	1
17	SEAL DRAIN LINE ROUND	1171447	1	1
18	SEAL DRAIN LINE SQUARE	1171202	1	1
19	RAIL BASE	1171033	1	1
20	RAIL BASE	1171032	1	1
21	BRACKET BASE (CORNER)	1171071	2	2
25	FRAME FILTER ASY	1171234	1	1
26	RETAINER FILTER	1171239	1	1
27	RETAINER FILTER	1171238	1	1
28	RETAINER FILTER	1171240	2	2
29	SUPPORT TRACK	1171472	1	1
30	FILTER AIR 16X20X2 DISP	1171230	4	4
31	PAN CONDENSATE	1171359	1	1
32	FREEZE STAT O30 C45	1171252	1	1
33	DECK FAN	1171214	1	1
34	HARNESS	1171884	1	1
35	INDOOR BASE PAN	1171307	1	1
36	BRACKET COIL (HEADER END)	1171070	1	1
37	COIL EVAP	1171549	1	1
40	MTR CND 1/230 1/4	1171335	2	2
41	RACEWAY	1171428	2	2
42	GRILLE OUTLET	1171267	2	2
43	FAN C 22" 3B 1/2" 24 INT	1171220	2	2
44	PAINT DARK GREY 16OZ AEROSOL	1171357	1	1
45	PANEL	1171373	1	1
46	CLAMP	1171537	1	1
47	CAP RN OV 370V 10+10	1171105	1	1
48	BREAKER 3.2A 1 POLE 250V	1171114	1	1
49	DEFROST CONTROL BOARD	1171190	1	1
50	RELAY 24V DPST 9400-03Q228	1171436	1	1
51	TRANS 200/230/460>24 75VA	1171496	1	1
52	BOARD TERMINAL LO VOLT 8P	1171488	1	1
53	RELAY 24V 3PDT KU93-4267-1	1171433	1	1
54	CONTACTOR 2P 20A 24V	1171160	3	3
55	RELAY 24V DPDT R8222D1121	1171435	1	1
56	COMP ZR42K3- TF5-230	ZR42K3TF5230	2	*
56	COMP ZR42K3- TFD-230	ZR42K3TFD230	*	2

PHE090 PARTS LIST (continued)

KEY NO.	DESCRIPTION	FAST PART NO.	PHE090H000AA	PHE090L000AA
57	GROMMET COMPRESSOR 1.25"DIA	1171269	8	8
58	BOLT HEX HEAD COMPRESSOR MTG	1171056	8	8
59	SENSOR DEFROST O80 C30	1171481	2	2
60	SWITCH PRESS HI O426 C320	1171303	2	2
61	SWITCH PRESS LO O07 C22	1171412	2	2
62	COIL COND	1171548	1	1
63	VALVE REV W/COIL 24V	1171509	*	2
64	STRAINER 3/8 IN & OUT	1171463	4	4
65	VALVE CHECK 3/8 X 3/8	1171113	4	4
66	ACCUMULATOR 124 3/4	1171007	2	2
67	FITTING ACCESS	1171507	2	1
70	MTR BLT 3/208-460 3.0 1750	1171338	1	1
71	PULLEY 1 X 8.25 AK84	1171415	1	1
72	PULLEY 7/8 X 5.00	1171425	1	1
73	BELT V 4L510 51"	1171515	1	1
75	WHEEL BD15x15x1 REV CV DBL	1171050	1	1
76	BRACKET ASY	1171062	2	2
77	PLATE FAN	1171395	1	1
78	PLATE FAN	1171396	1	1
79	SCROLL FAN	1171445	1	1
80	SHAFT BLR	1171452	1	1
81	PLATE MOTOR	1171388	1	1
82	BRACKET ASY MOTOR MOUNT	1171345	1	1
83	PLATE	1171391	1	1
84	BRACKET MOTOR	1171077	1	1
85	BOLT CARRIAGE 5/16-18 X 10	1171057	1	1
86	KEY SHAFT 1/4X1/4X1-3/4	1171322	1	1
87	BEARING BALL 1"	1171037	2	2
PARTS NOT SHOWN				
II	VALVE CHECK	1170602	4	4
II	BASE PAN OUTDOOR	1171024	1	1
II	PLATE BLOCKOFF	1171040	1	1
II	BLOWER ASY	1171043	1	1
II	CONTROL BOX	1171059	1	1
II	CAP FLARE	1171101	4	4
II	COVER CONTROL	1171169	1	1
II	PANEL	1171372	2	2
II	PLUG	1171401	1	1
II	PLUG FUSIBLE 210F	1171402	2	2
II	PLUG ASSEMBLY ECONOMIZER	1171405	1	1
II	RACEWAY-24VT	1171429	1	1
II	RECEPTACLE	1171430	1	*
II	RELAY SENSING	1171434	2	2
II	TERMINAL BLOCK 2P 25A 125V	1171487	1	1
II	CORE VALVE	1171508	8	8
II	BELT DRIVE FAN PARTS (STD)	1171550	1	1
II	DRIER 08 CI 3/8" IN & OUT	1171555	2	2
II	PANEL FILTER ACCESS	1171784	*	1
II	PANEL FILTER ACCESS	1171796	1	*
II	COIL REV VALVE 24V	1171826	2	2

PHE102 PARTS LIST

KEY NO.	DESCRIPTION	FAST PART NO.	PHE102H000AA	PHE102L000AA
01	CONTACTOR	1171160	3	3
02	TRANSFORMER	1171496	1	1
03	CAPACITOR	1175708	1	1
04	RELAY	1171809	1	1
05	TERMINAL BOARD	1171488	1	1
06	BLOWER ASY	1175411	1	1
07	BEARING	1175709	2	2
08	WHEEL, BLOWER	1171050	1	1
09	KEY	1171322	1	1
10	MOTOR, INDOOR	1175721	1	1
11	PULLEY	1175315	1	1
12	PULLEY	1175720	1	1
13	BELT	1175710	1	1
14	COIL ASY, COND	1171893	1	1
15	COIL ASY, EVAP	1175412	1	1
16	CONDUIT	1171428	2	2
17	FILTER	1171230	4	4
18	MOTOR, OUTDOOR	1171335	2	2
19	PROPELLER	1171220	2	2
20	SWITCH	1171483	1	1
21	COMP GC06XN007	1175409	2	2
22	SWITCH	1171252	1	1
47	DRIER, FILTER	1171555	2	2
48	RELAY	1171433	1	1
49	RELAY, LOCK OUT	1171434	2	2
50	VALVE, CHECK	1171113	4	4
51	STRAINER	1171463	2	2
52	SWITCH	1171805	2	2
53	SWITCH	1175308	2	2
54	SWITCH, TEMP	1171481	1	1
55	CIRCUIT BREAKER	1171114	1	1
56	RELAY	1171436	1	1
57	VALVE, REVERSING	1175367	2	2
58	TERMINAL BLOCK	1175339	1	1
59	CIRCUIT BOARD	1171190	1	1
60	ACCUMULATOR	1171556	1	1
61	COIL, SOLENOID	1172619	2	2
A	SCROLL, BLOWER	1171223	1	1
B	STRAP, FORMED	1171537	1	1
C	CONTROL BOX	1171059	1	1
D	PLATE, WIRING	1171373	1	1
F	BRACKET ASY	1175712	2	2
G	PANEL ASY	1171004	1	1
H	CORNER POST, ASY	1171175	2	2
J	POST, CORNER	1171173	1	1
K	BASE PAN ASY	1171359	1	1
L	POST, CORNER	1171177	1	1
M	DECK, FAN	1171214	1	1
N	BRACKET, COIL	1171070	1	1
P	PLATE, MOUNTING	1171393	1	1
Q	COVER ASY	1171365	1	1
R	BASE PAN ASY	1171307	1	1
S	BRACKET, BASE	1171071	1	1

PHE102 PARTS LIST (continued)

KEY NO.	DESCRIPTION	FAST PART NO.	PHE102H000AA	PHE102L000AA
T	GUARD	1171206	1	1
U	RAIL, BASE	1171031	1	1
V	RAIL, BASE	1171033	1	1
W	RAIL, BASE	1175313	1	1
X	PLATE, BLOCK OFF	1171040	1	1
Y	GRILLE	1171267	2	2
Z	COVER, CONTROL	1171169	1	1
AB	PANEL ASY	1171308	1	1
AC	COVER ASY	1171180	1	1
AD	COVER ASY	1171182	1	1
AF	POST, CENTER	1171407	1	1
AH	BRACKET, COIL	1175722	1	1
AJ	PANEL, OUTDOOR	1171368	1	1
AK	GROMMET	1171270	8	8
AL	PANEL, ASY DOOR	1171386	1	1
AM	PANEL ASY	1171382	1	1
BF	PANEL, ACCESS	1171363	1	1
BK	POST, CENTER	1171406	1	1
BL	FRAME ASY	1171234	1	1
BM	BASE PAN ASY	1171025	1	1
BS	COVER, HEATER	1171372	2	2
BT	BRACKET, HEATER	1171304	1	1
PARTS NOT SHOWN				
)	HARNESS ASY	1175304	1	1
)	PLUG, WIRING ASY	1175366	1	1
)	HARNESS ASY	1175408	1	1
)	HARNESS ASY	1175150	1	1
)	HARNESS ASY	1175707	1	1
)	PLUG ASY	1171405	1	1

PHE120 PARTS LIST

KEY NO.	DESCRIPTION	FAST PART NO.	PHE120H000AA	PHE120L000AA
1	PANEL INDOOR END	1171308	1	1
2	COVER SUPPLY AIR	1171182	1	1
3	COVER RETURN AIR	1171180	1	1
4	PANEL INDOOR FAN ACCESS	1171364	1	1
5	POST CORNER	1171309	2	2
6	POST CENTER FILTER ACCESS	1171109	1	1
7	PANEL FILTER ACCESS LOWER	1171382	1	1
8	POST CORNER	1171172	1	1
9	POST CORNER	1171174	1	1
10	POST CENTER COMP ACCESS	1171407	1	1
11	COVER ASY TOP	1171365	1	1
12	PANEL OUTDOOR ACCESS	1171368	1	1
12	VALVE REV W/COIL 24V	1171509	2	2
13	PANEL CONTROL BOX ACCESS	1171363	1	1
14	PANEL FILTER ACCESS	1171385	1	1
15	PANEL END SKIRT	1171206	1	1
16	RAIL BASE	1171031	1	1
17	SEAL DRAIN LINE ROUND	1171447	1	1
18	SEAL DRAIN LINE SQUARE	1171202	1	1
19	RAIL BASE	1171033	1	1
20	RAIL BASE	1171032	1	1
21	BRACKET BASE (CORNER)	1171071	2	2
25	FRAME ASY ECON TRACK	1171205	1	1
26	RETAINER FILTER	1171239	1	1
27	RETAINER FILTER	1171238	1	1
28	FILTER RETAINER	1171536	2	2
29	SUPPORT TRACK	1171472	1	1
30	FILTER AIR 20X20X2 DISP	1171231	4	4
31	PAN CONDENSATE	1171359	1	1
32	FREEZE STAT O30 C45	1171252	1	1
33	DECK FAN	1171214	1	1
34	HARNES	1171884	1	1
35	INDOOR BASE PAN	1171307	1	1
36	BRACKET COIL (HEADER END)	1171070	1	1
37	COIL EVAP	1171126	*	1
37	COIL EVAP	1171544	1	*
40	MTR CND 1/460 1/4	1171334	*	2
40	MTR CND 1/230 1/4	1171335	2	*
41	RACEWAY	1171428	2	2
42	GRILLE OUTLET	1171267	2	2
43	FAN C 22" 3B 1/2" 24 INT	1171220	2	2
44	PAINT DARK GREY 16OZ AEROSOL	1171357	1	1
45	PANEL	1171373	1	1
46	CLAMP	1171537	1	1
47	CAP RN OV 370V 10+10	1171105	1	1
48	BREAKER 3.2A 1 POLE 250V	1171114	1	1
49	DEFROST CONTROL BOARD	1171190	1	1
50	RELAY 24V DPST 9400-03Q228	1171436	1	1
51	TRANS 200/230/460>24 75VA	1171496	1	1
52	BOARD TERMINAL LO VOLT 8P	1171488	1	1
53	RELAY 24V 3PDT KU93-4267-1	1171433	1	1
54	CONTACTOR 2P 20A 24V	1171160	3	3
55	RELAY 24V DPDT R8222D1121	1171435	1	1

PHE120 PARTS LIST (continued)

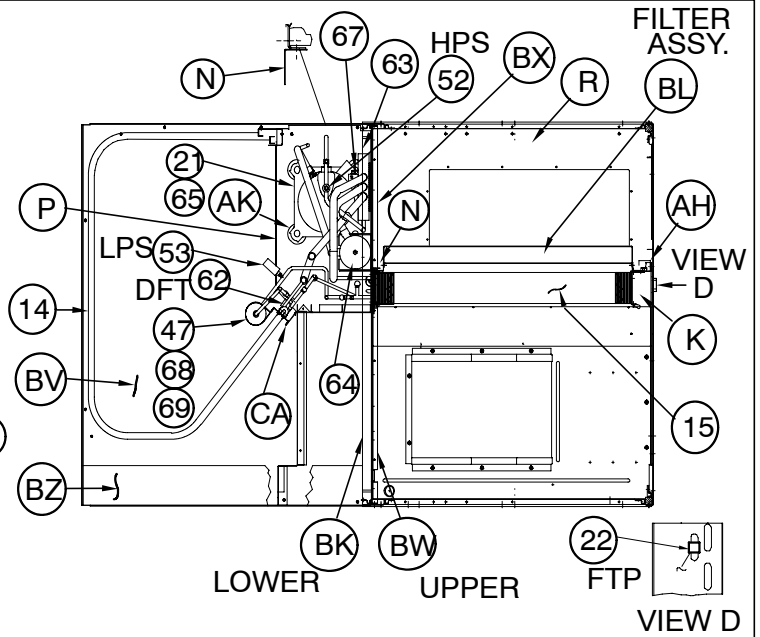
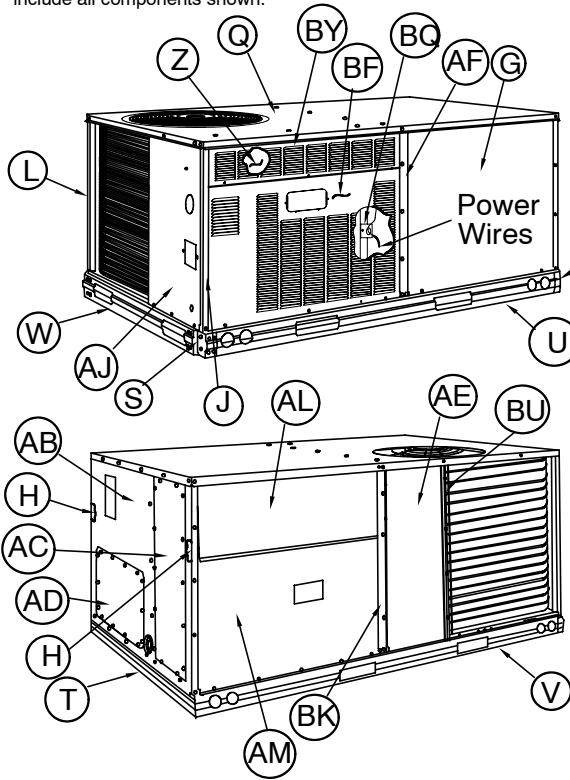
KEY NO.	DESCRIPTION	FAST PART NO.	PHE120H000AA	PHE120L000AA
56	COMP ZR57K3-TF5-250	ZR57K3TF5250	2	*
56	COMP ZR57K3-TFD-250	ZR57K3TFD250	*	2
57	GROMMET COMPRESSOR 1.62"DIA	1171270	8	8
58	BOLT HEX HEAD COMPRESSOR MTG	1171056	8	8
59	SENSOR DEFROST O80 C30	1171481	2	1
60	SWITCH PRESS HI O426 C320	1171303	2	2
61	SWITCH PRESS LO O07 C22	1171412	2	2
62	COIL COND	1171120	*	1
62	COND PHE120	1171893	1	*
64	STRAINER 3/8 IN & OUT	1171463	2	1
65	VALVE CHECK 3/8 X 3/8	1171113	4	1
66	ACCUMULATOR 191 7/8	1171008	2	1
67	FITTING ACCESS	1171507	1	1
70	MTR BLT 3/208-460 2.5 1725	1171337	*	1
70	MTR BLT 3/208-460 3.5 1750	1171340	1	*
71	PULLEY 1 X 8.25 AK84	1171415	1	*
71	PULLEY 1 X 6.93 AM74	1171422	*	1
72	PULLEY 5/8 X 4.25	1171420	*	1
72	PULLEY 7/8 X 5.38 1VP56	1171562	1	*
73	BELT V A49 51"	1171513	*	1
73	BELT V A53 55"	1171514	1	*
75	WHEEL BD15x15x1 REV CV DBL	1171050	1	1
76	BRACKET ASY	1171062	2	2
77	PLATE FAN DRIVE SIDE	1171227	1	1
78	PLATE FAN	1171218	1	1
79	SCROLL FAN	1171223	1	1
80	SHAFT BLR	1171452	1	1
81	PLATE MOTOR	1171388	1	1
82	BRACKET ASY MOTOR MOUNT	1171078	1	1
83	PLATE	1171399	1	1
84	BRACKET MOTOR	1171077	1	1
85	BOLT CARRIAGE 5/16-18 X 10	1171057	1	1
86	KEY SHAFT 1/4X1/4X1-3/4	1171322	1	1
87	BEARING BALL 1"	1171037	2	2
PARTS NOT SHOWN				
	VALVE CHECK	1170602	4	*
	BASE PAN OUTDOOR	1171025	1	1
	CONTROL BOX	1171059	1	1
	CAP FLARE	1171101	4	4
	BRACKET COIL (HAIRPIN END)	1171119	1	*
	COVER CONTROL	1171169	1	1
	HEADER ASY	1171277	*	2
	HEADER ASY	1171280	*	2
	HTR BRACKET	1171304	1	1
	RACEWAY 24V	1171326	1	1
	PANEL	1171372	2	2
	PLUG	1171401	*	1
	PLUG FUSIBLE 210F	1171402	2	2
	PLUG ASSEMBLY ECONOMIZER	1171405	1	1
	RECEPTACLE	1171430	*	1
	RELAY SENSING	1171434	2	*
	TERMINAL BLOCK 2P 25A 125V	1171487	1	1
	TERMINAL BLOCK 2P 25A 125V	1171487	*	1

PHE120 PARTS LIST (continued)

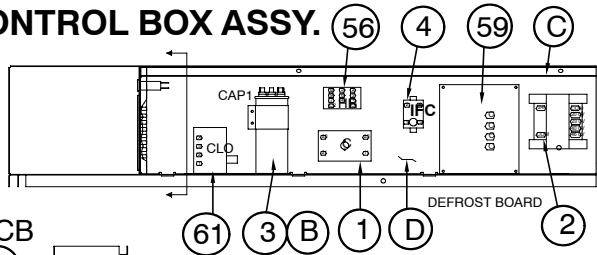
KEY NO.	DESCRIPTION	FAST PART NO.	PHE120H000AA	PHE120L000AA
II	CORE VALVE	1171508	8	8
II	BELT DRIVE FAN PARTS (STD)	1171532	*	1
II	BELT DRIVE FAN PARTS (STD)	1171533	1	*
II	HEADER ASY LOWER	1171542	1	*
II	HEADER ASY UPPER	1171543	1	*
II	DRIER 08 CI 3/8" IN & OUT	1171555	2	*
II	PANEL FILTER ACCESS	1171785	*	1
II	PANEL FILTER ACCESS	1171786	1	*
II	COIL REV VALVE 24V	1171826	2	2

PHE072

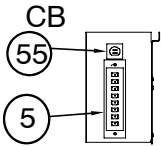
NOTE: This illustration is for reference only. Your unit may differ in appearance or may not include all components shown.



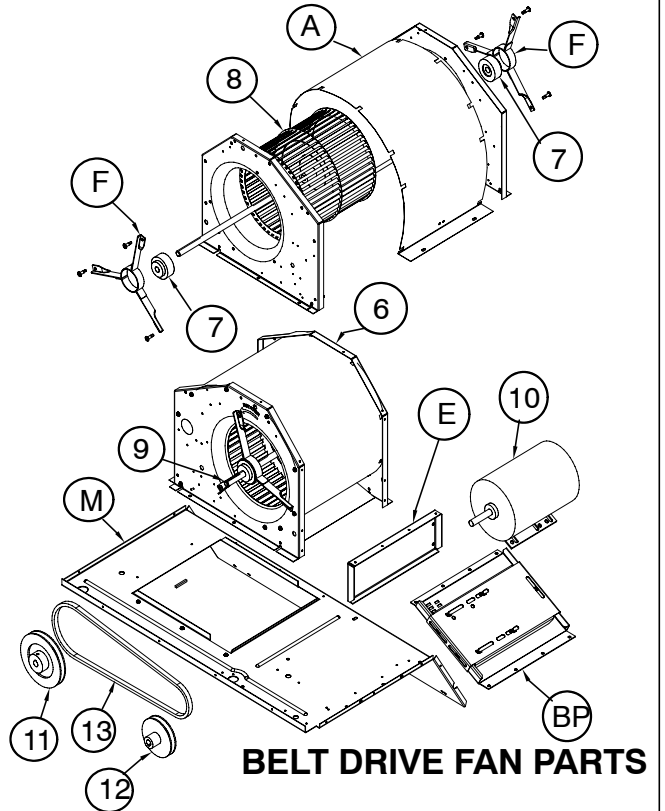
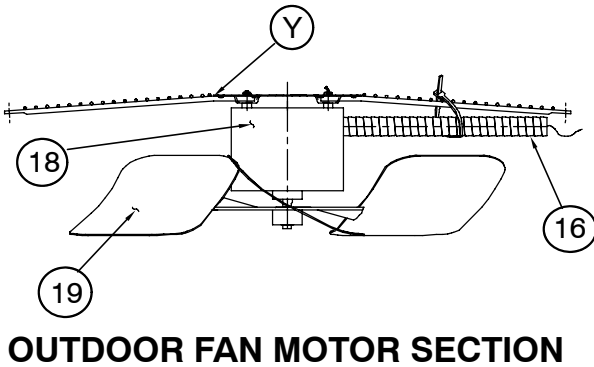
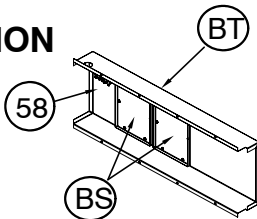
CONTROL BOX ASSY.



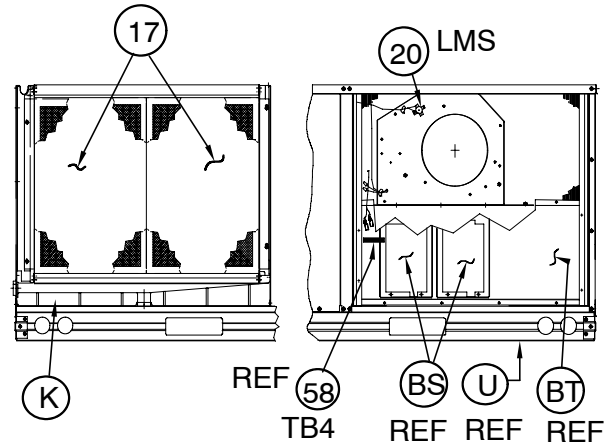
CONNECTION BOARD



ELECTRIC HEAT

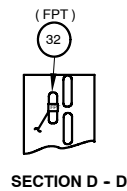
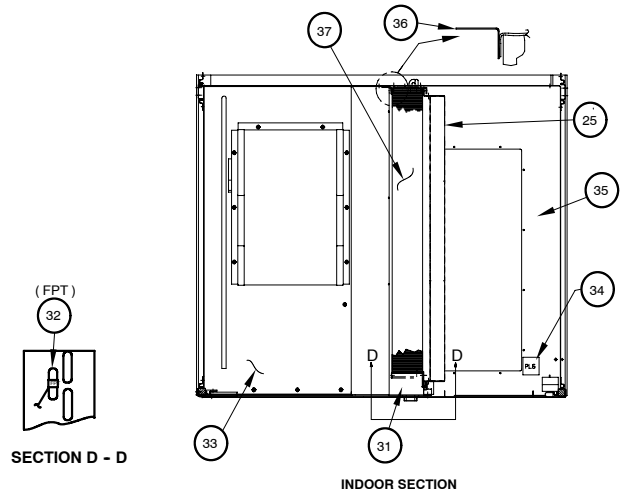
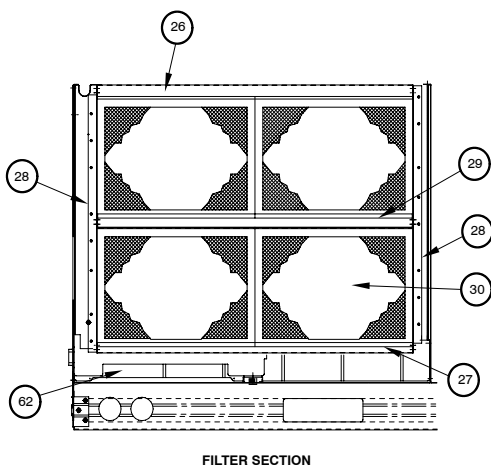
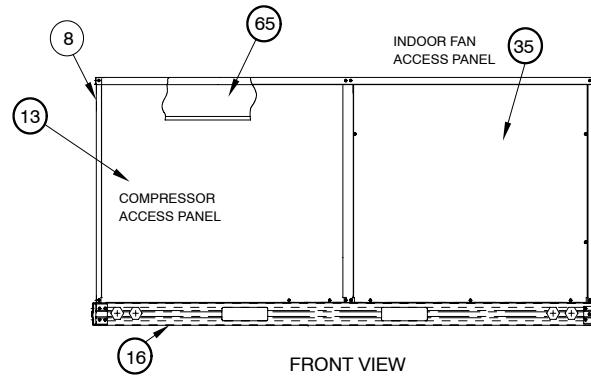
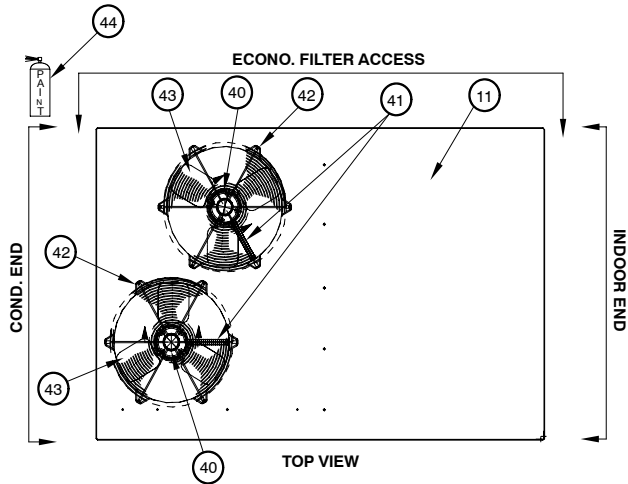
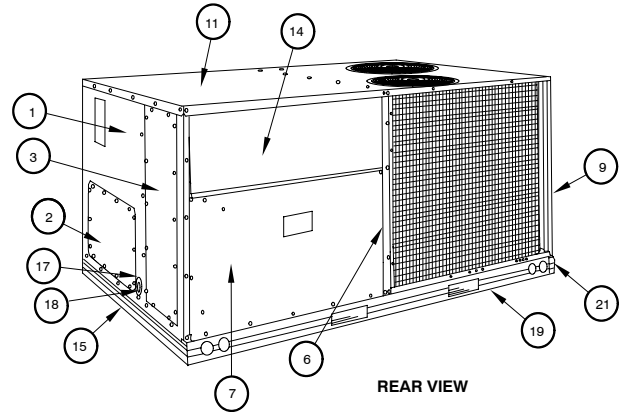
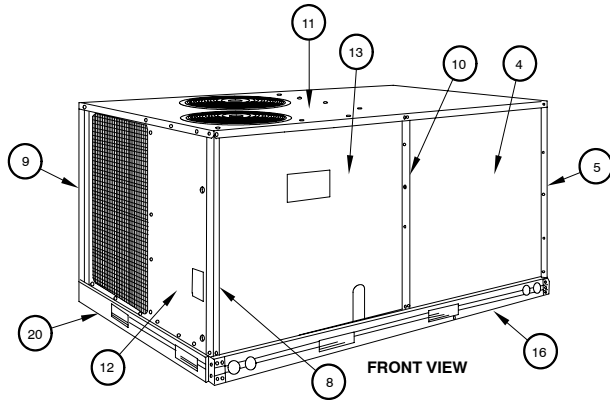
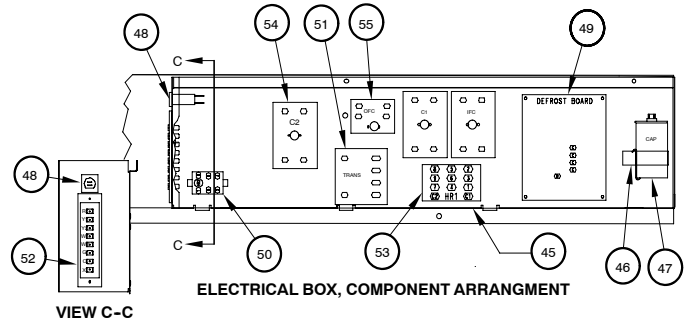


BELT DRIVE FAN PARTS

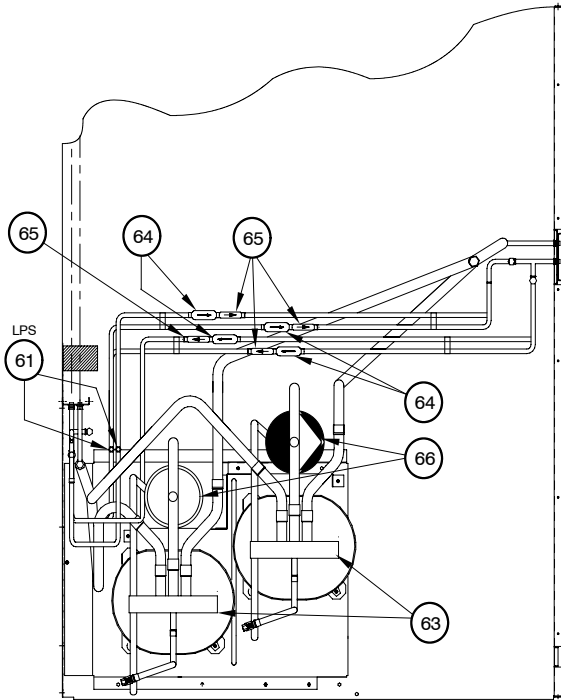


PGE090,120

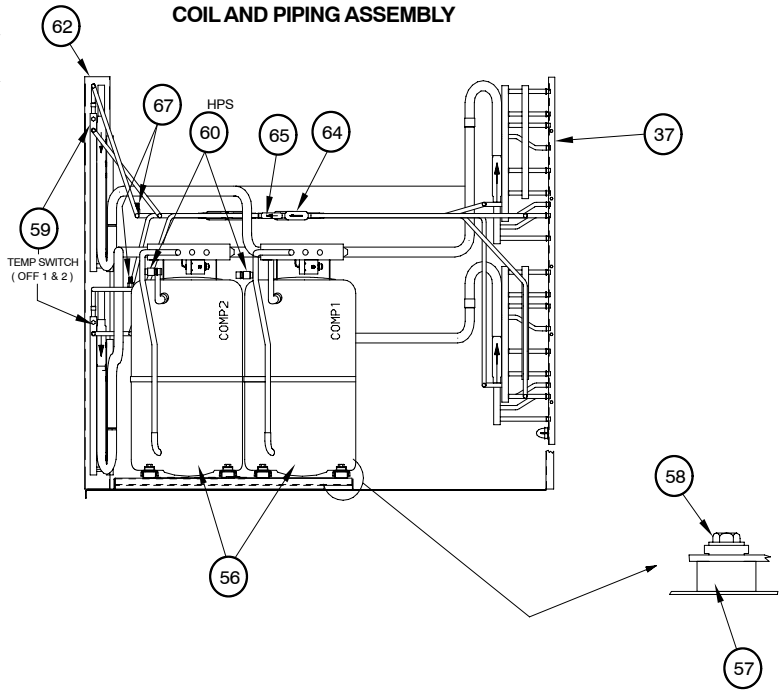
NOTE: This illustration is for reference only. Your unit may differ in appearance or may not include all components shown.



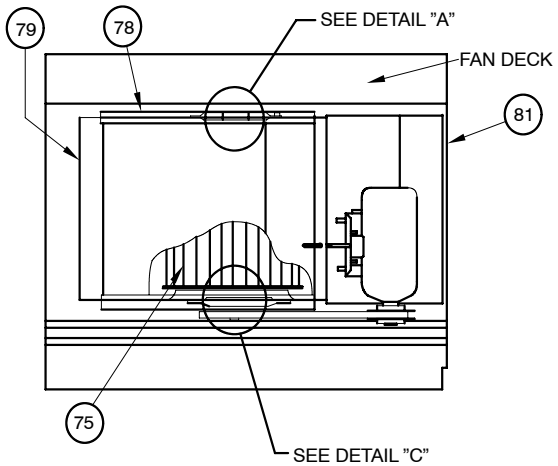
NOTE: This illustration is for reference only. Your unit may differ in appearance or may not include all components shown.



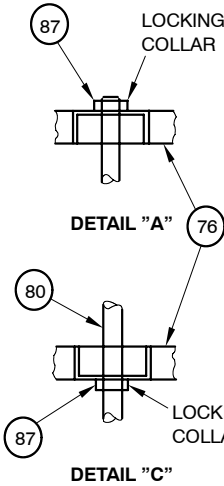
**COIL AND PIPING ASSEMBLY
TOP VIEW**



COIL AND PIPING ASSEMBLY

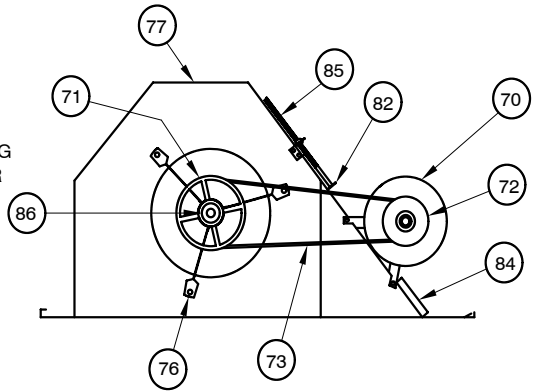


FAN DECK



DETAIL "A"

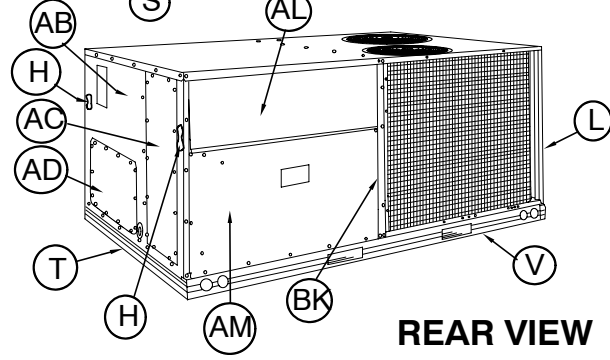
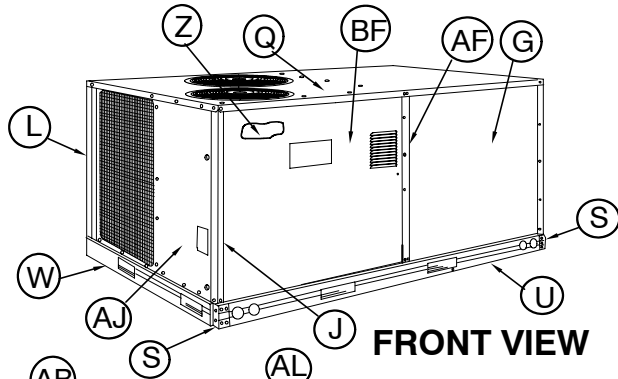
DETAIL "C"



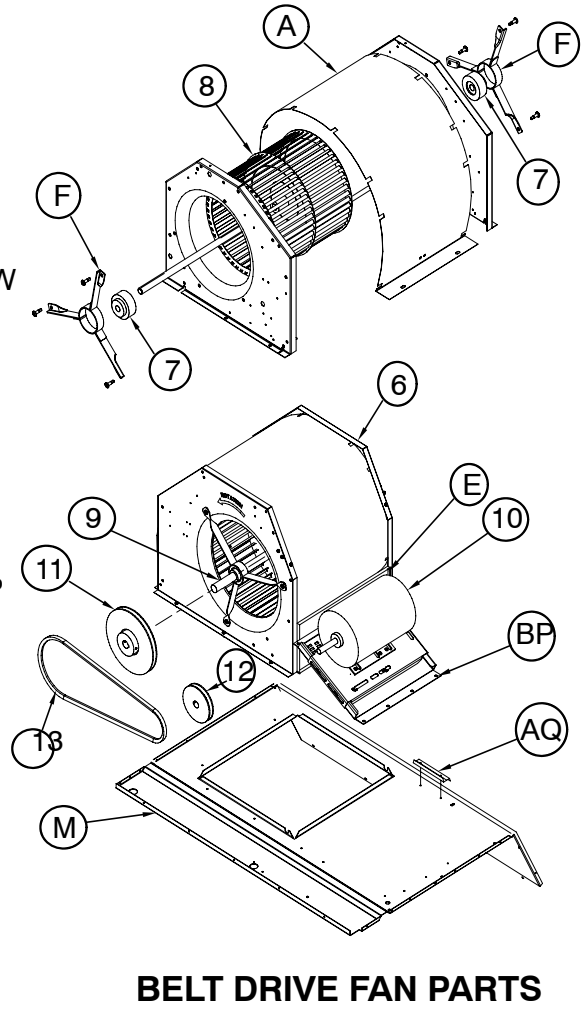
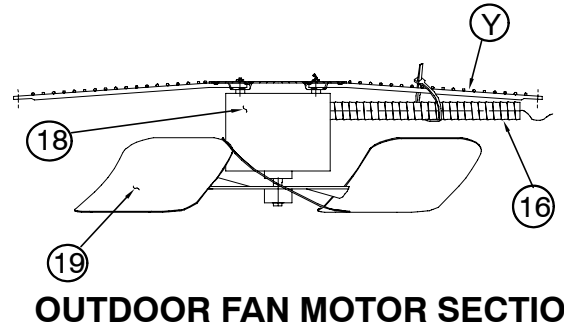
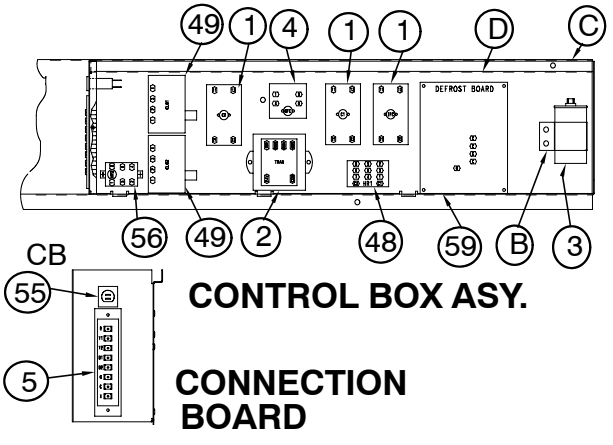
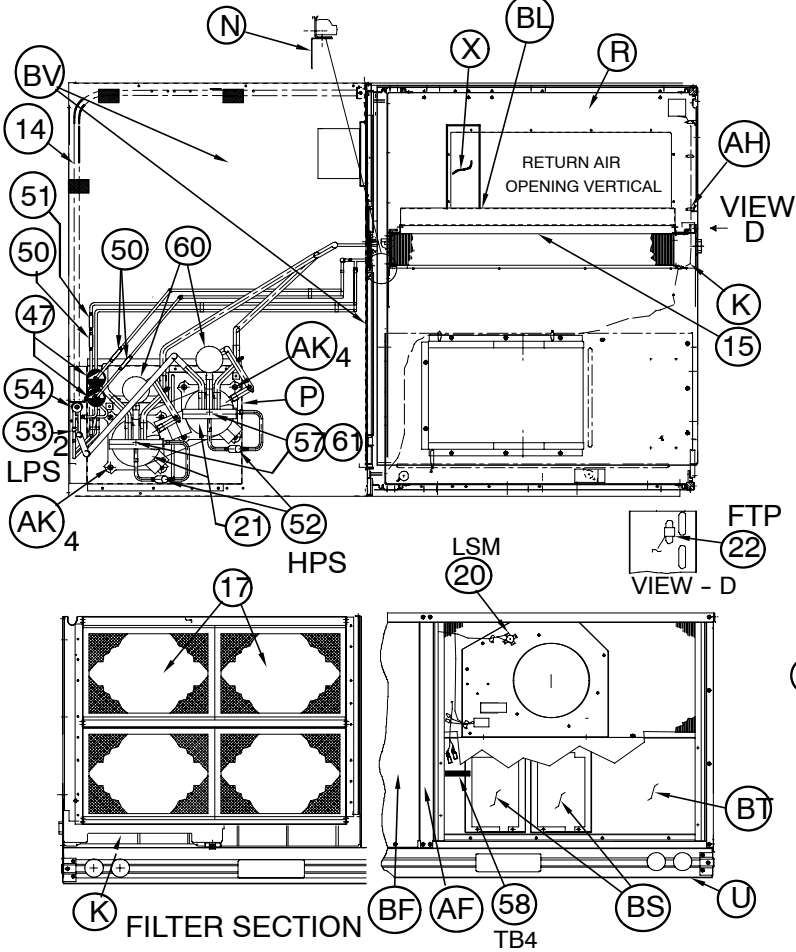
INDOOR FAN SECTION

PHE102

NOTE: This illustration is for reference only. Your unit may differ in appearance or may not include all components shown.



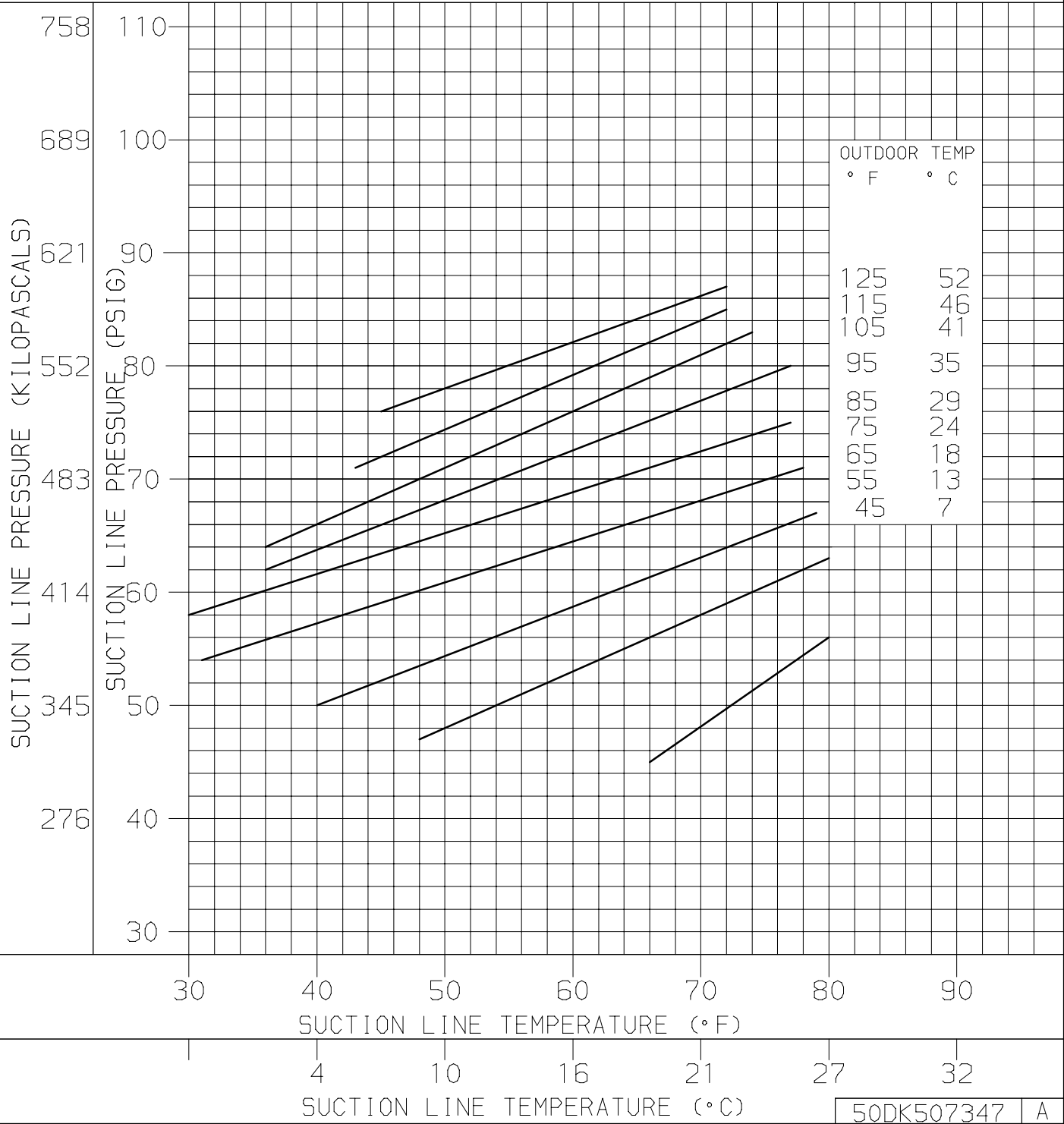
FILTER ASY.



PHE072

6 TON, CIRCUIT 1, 60HZ

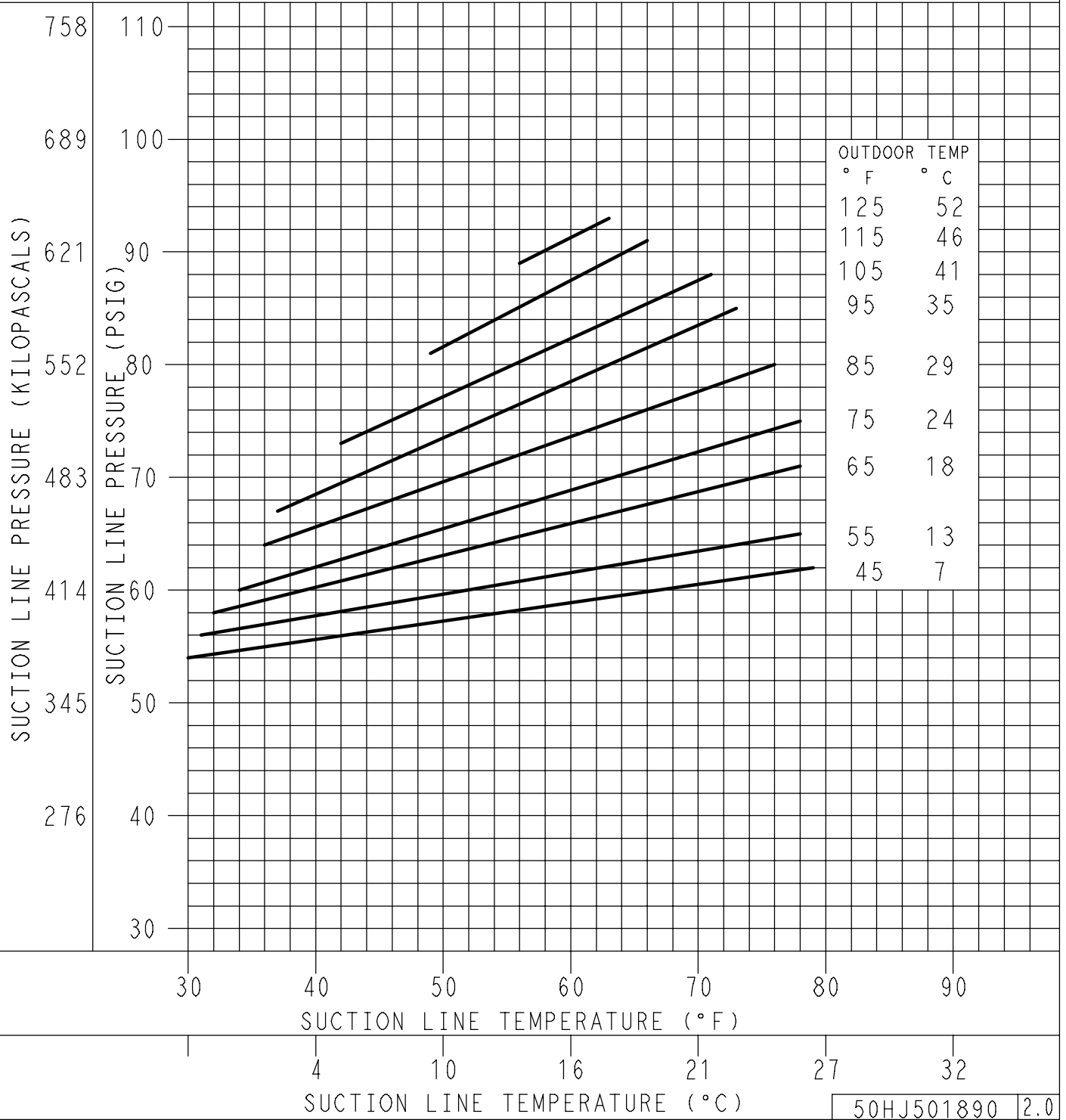
CHARGING CHART



PHE090

7.5 TON, CIRCUIT 1 AND 2, 60HZ

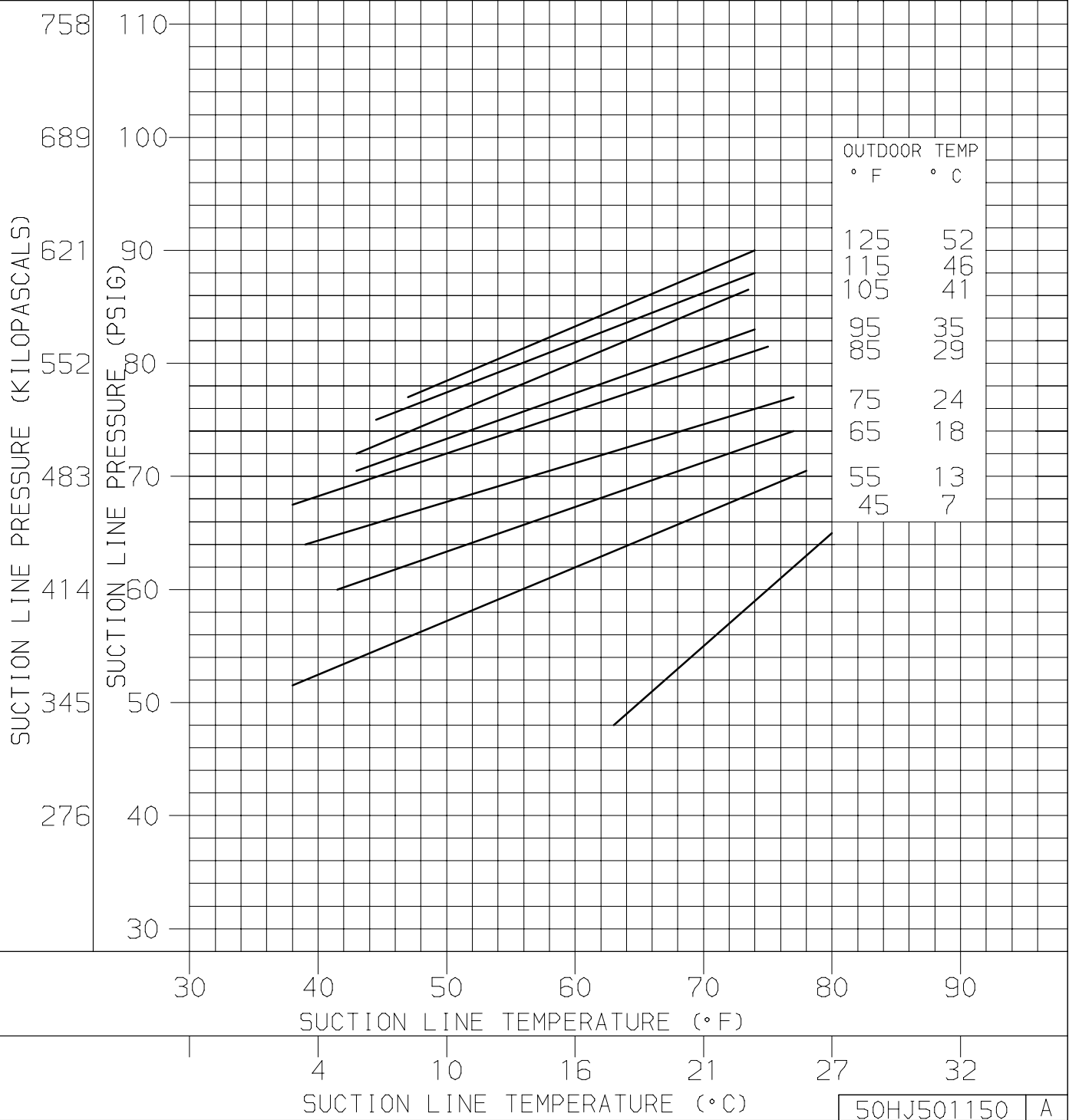
CHARGING CHART



PHE102

8.5 TON, CIRCUIT 1 AND 2, 60HZ

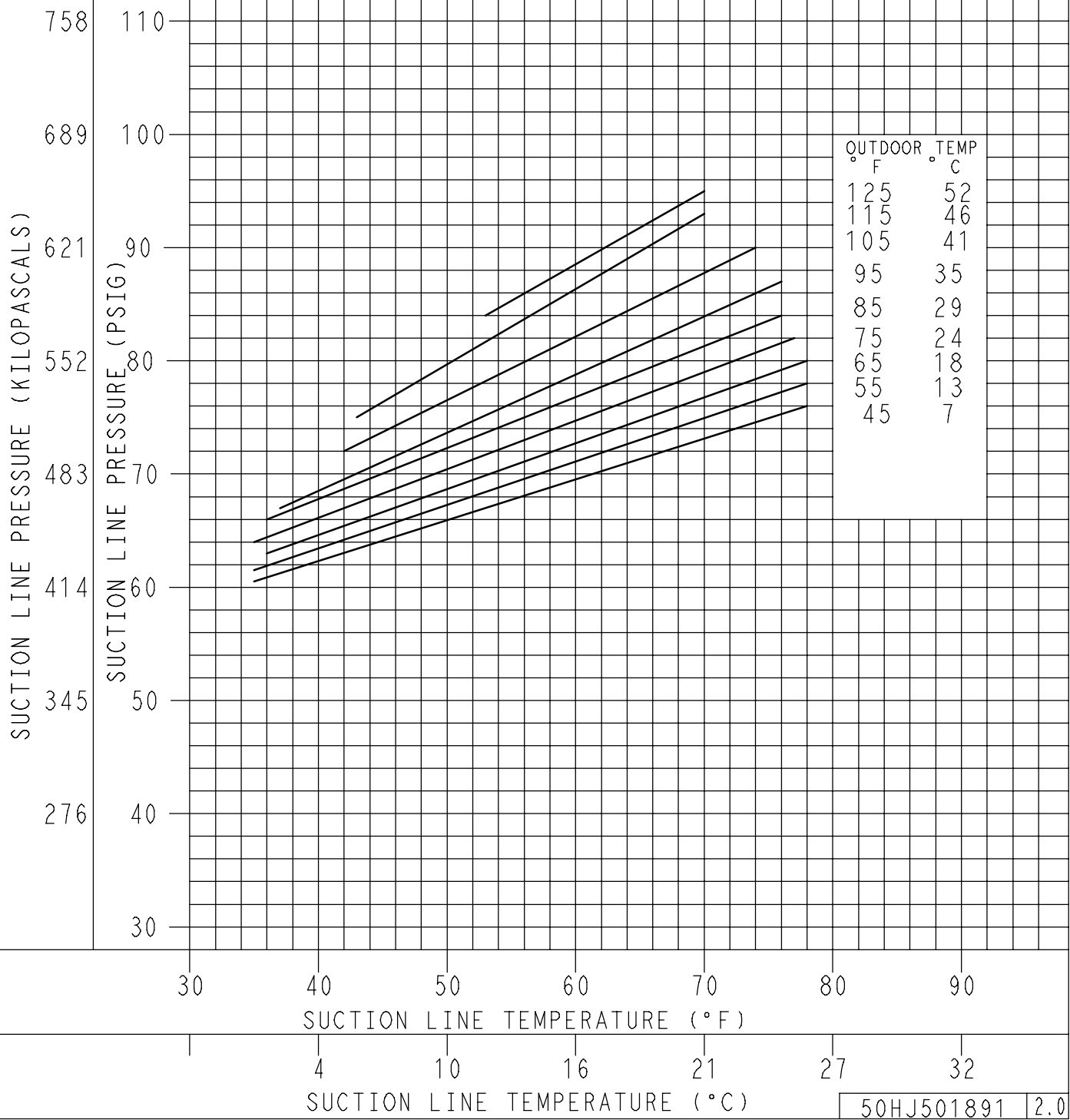
CHARGING CHART



PHE120

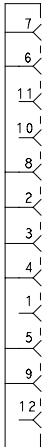
10 TON, CIRCUIT 1 AND 2, 60HZ

CHARGING CHART



ECONOMIZER WIRING (FIELD CONNECTED)

PL6-R
FOR ECON
UNIT



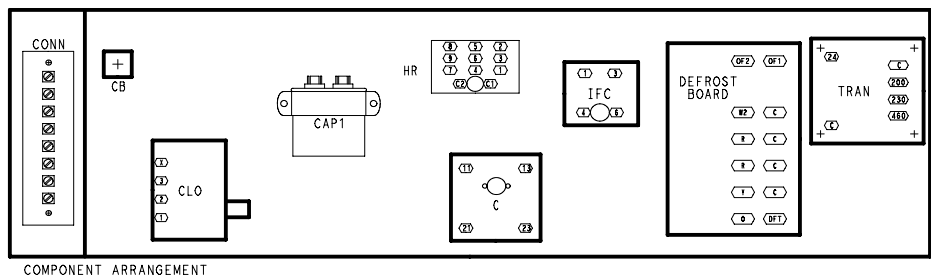
- NOTES**
- IF ANY OF THE ORIGINAL WIRE FURNISHED MUST BE REPLACED. IT MUST BE REPLACED WITH TYPE 90 C WIRE OR ITS EQUIVALENT.
 - COMPRESSOR AND FAN MOTORS ARE THERMALLY PROTECTED. THREE PHASE MOTORS ARE PROTECTED AGAINST PRIMARY SINGLE PHASING CONDITIONS.
 - TRAN IS WIRED FOR 230V UNIT. IF UNIT IS TO BE RUN WITH 208V POWER SUPPLY DISCONNECT BLK WIRE FROM 230V TAP (ORN) AND CONNECT TO 208V TAP (RED). INSULATE END OF 230V WIRE.
 - USE COPPER, COPPER CLAD, ALUMINUM OR ALUMINUM CONNECTORS.
 - USE COPPER CONDUCTOR ONLY.

VOLTAGE RATING	CB	MUST TRIP
	MFG. PT. NO.	AMPS
24V	POTTER & BRUMFIELD W28X-1024-3.2	3.2

- C CONTACTOR, COMPRESSOR
- CAP CAPACITOR
- CB CIRCUIT BREAKER
- CC COOLING COMPENSATOR
- CLO COMPRESSOR LOCKOUT
- COMP COMPRESSOR MOTOR
- DB DEFROST BOARD
- DFT DEFROST THERMOSTAT
- FPT FREEZE UP PROTECTION THERMOSTAT
- FU FUSE
- GND GROUND
- HC HEATER CONTACTOR (STRIP HEAT)
- HP HEAT PUMP
- HPS HIGH PRESSURE SWITCH
- HR HEATER RELAY
- IAQ INDOOR AIR QUALITY SENSORS
- IARH INDOOR AIR RELATIVE HUMIDITY SEN
- IFC INDOOR FAN CONTACTOR
- IFM INDOOR FAN MOTOR
- LA LOW AMBIENT LOCKOUT
- LPS LOW PRESSURE SWITCH
- LSM LIMIT SWITCH (MANUAL RESET)
- OARH OUTDOOR AIR RELATIVE HUMIDITY SEN
- OAT OUTDOOR AIR TEMP. SEN
- OFM OUTDOOR FAN MOTOR
- OLR OVERLOAD RELAY
- P PLUG
- PL PLUG ASSEMBLY
- POT POTENTIOMETER
- QT QUADRUPLE TERMINAL
- R RELAY
- RAT RETURN AIR TEMP. SEN
- RVS REVERSING VALVE SOLENOID
- SAT SUPPLY AIR TEMP. SEN
- TB TERMINAL BLOCK
- TDR TIME DELAY RELAY
- TRAN TRANSFORMER

LEGEND

- FIELD SPLICE
- MARKED WIRE
- TERMINAL (MARKED)
- TERMINAL (UNMARKED)
- TERMINAL BLOCK
- SPLICE
- SPLICE (MARKED)
- FACTORY WIRING
- FIELD CONTROL WIRING
- FIELD POWER WIRING
- ACCESSORY OR OPTIONAL WIRING
- TO INDICATE COMMON POTENTIAL ONLY;
- NOT TO REPRESENT WIRING

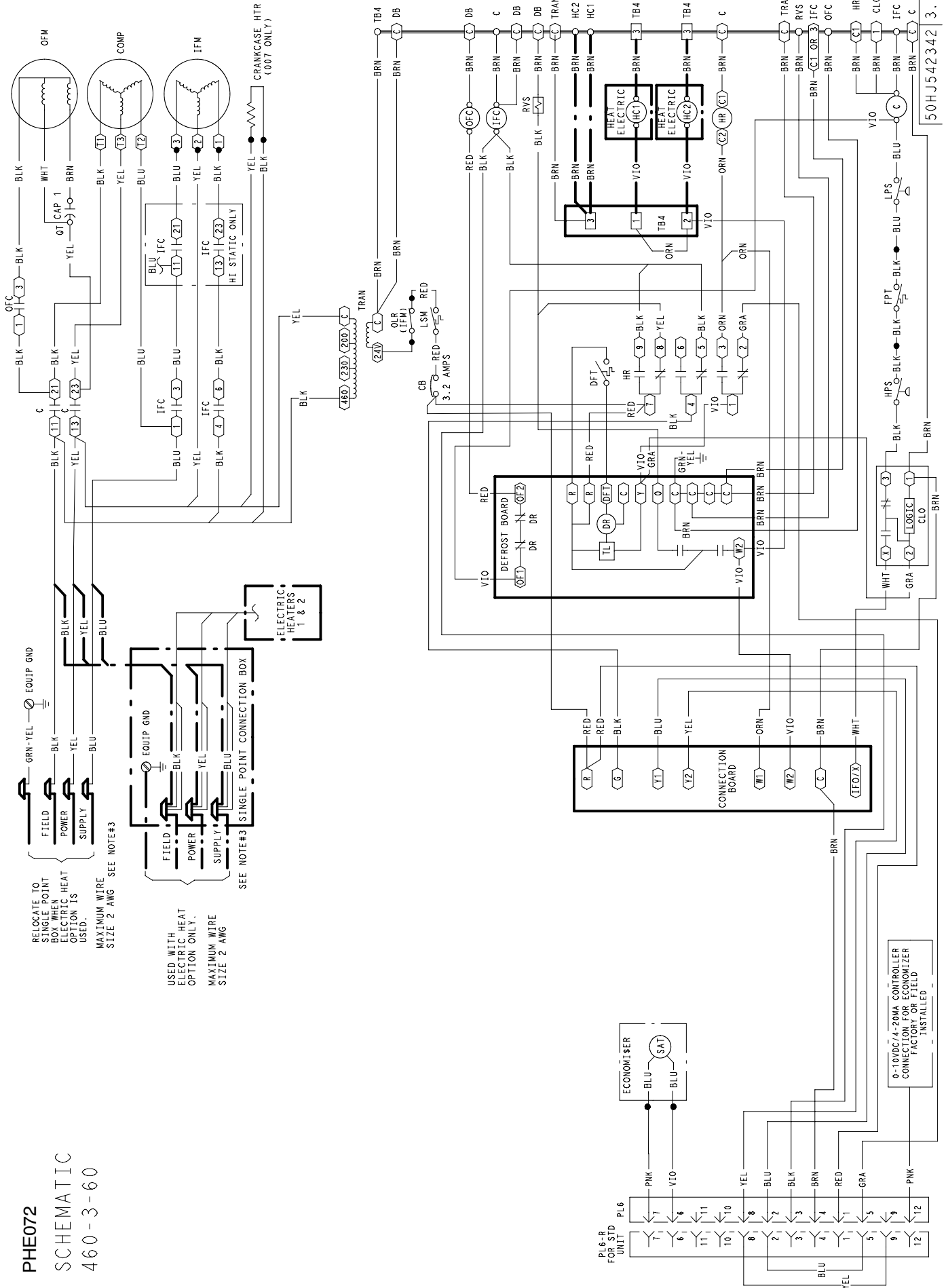


COMPONENT ARRANGEMENT

PHE072

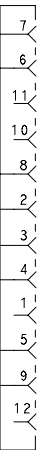
SCHEMATIC

460-3-60



ECONOMIZER WIRING (FIELD CONNECTED)

PL 6 - R
FOR ECON
UNIT



NOTES

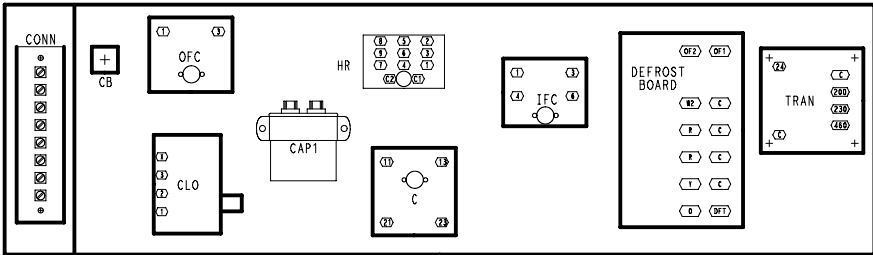
1. IF ANY OF THE ORIGINAL WIRE FURNISHED MUST BE REPLACED. IT MUST BE REPLACED WITH TYPE 90 C WIRE OR ITS EQUIVALENT.
2. COMPRESSOR AND FAN MOTORS ARE THERMALLY PROTECTED. THREE PHASE MOTORS ARE PROTECTED AGAINST PRIMARY SINGLE PHASING CONDITIONS.
3. USE COPPER CONDUCTOR ONLY.

VOLTAGE RATING	CB	MUST TRIP
	MFG. PT. NO.	
24V	POTTER & BRUMFIELD	AMPS
	W28X-1024-3.2	

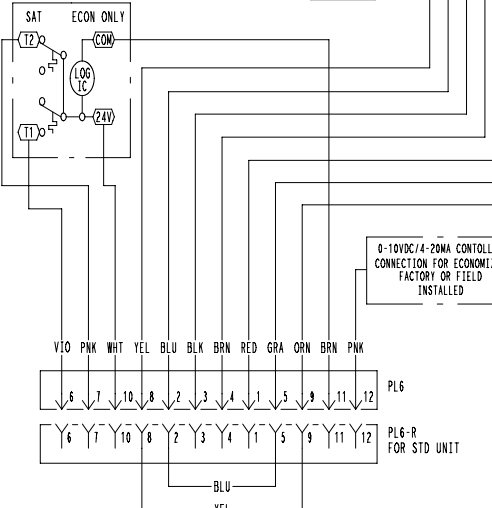
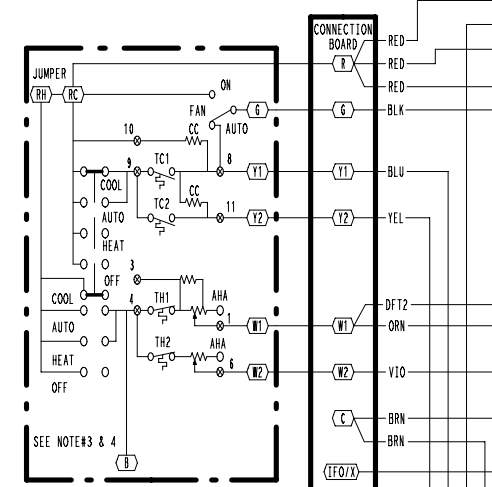
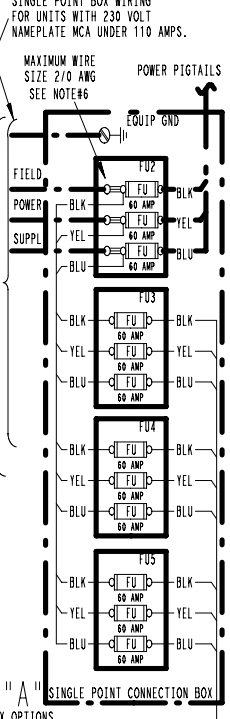
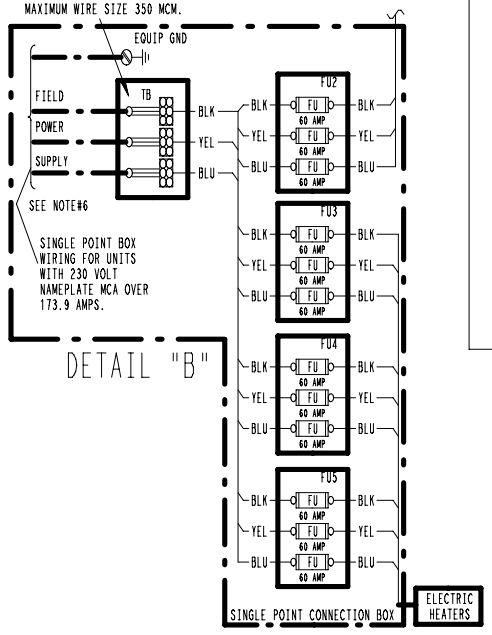
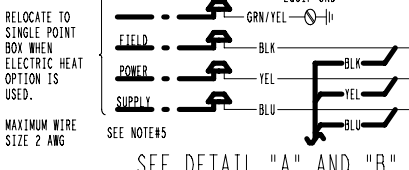
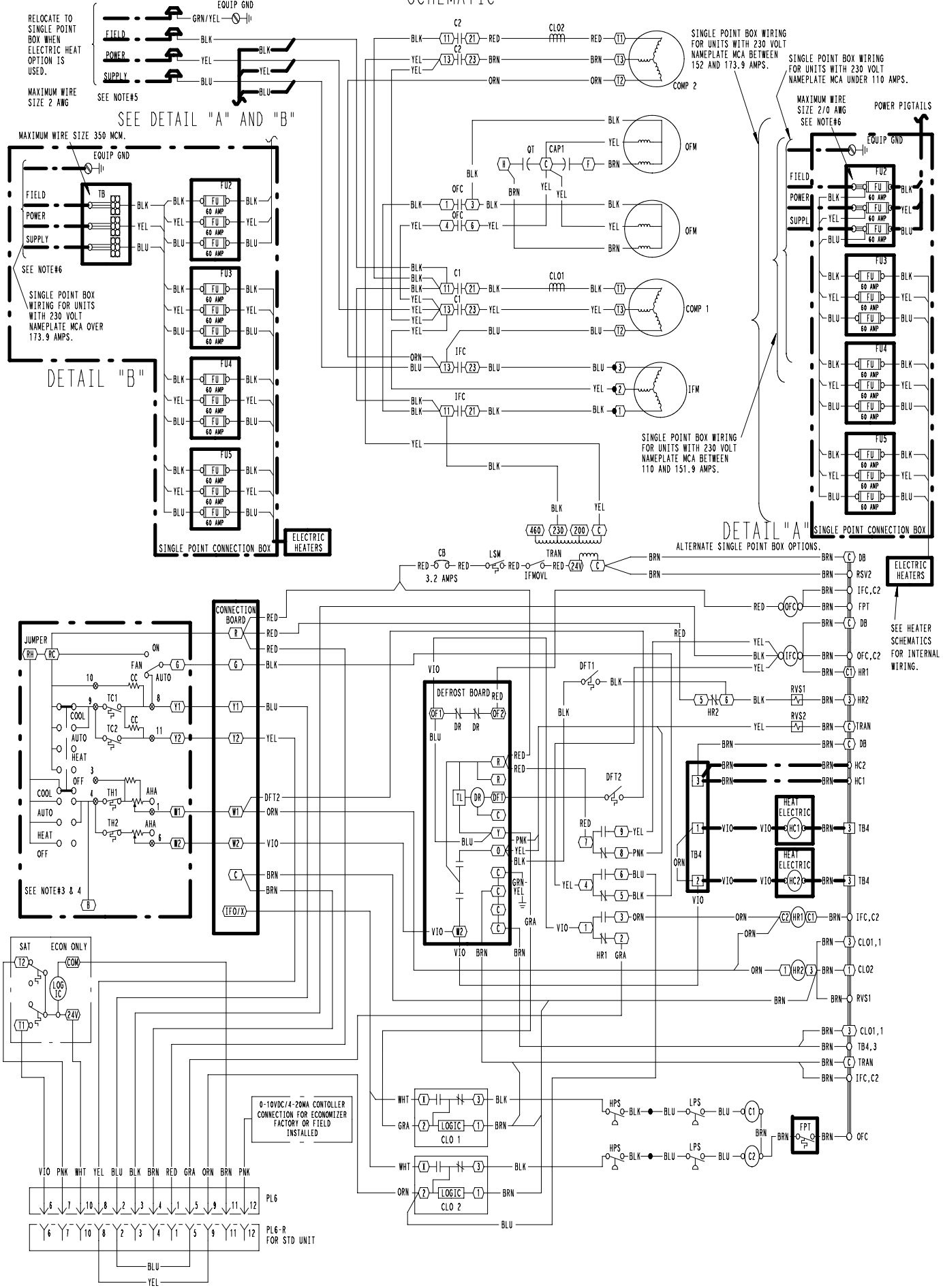
- C CONTACTOR, COMPRESSOR
- CAP CAPACITOR
- CB CIRCUIT BREAKER
- CC COOLING COMPENSATOR
- CLO COMPRESSOR LOCKOUT
- COMP COMPRESSOR MOTOR
- DB DEFROST BOARD
- DFT DEFROST THERMOSTAT
- FPT FREEZE UP PROTECTION THERMOSTAT
- FU FUSE
- GND GROUND
- HC HEATER CONTACTOR (STRIP HEAT)
- HP HEAT PUMP
- HPS HIGH PRESSURE SWITCH
- HR HEATER RELAY
- IAQ INDOOR AIR QUALITY SENSORS
- IARH INDOOR AIR RELATIVE HUMIDITY SEN
- IFC INDOOR FAN CONTACTOR
- IFM INDOOR FAN MOTOR
- LA LOW AMBIENT LOCKOUT
- LPS LOW PRESSURE SWITCH
- LSM LIMIT SWITCH (MANUAL RESET)
- OARH OUTDOOR AIR RELATIVE HUMIDITY SEN
- OAT OUTDOOR AIR TEMP. SEN
- OFM OUTDOOR FAN MOTOR
- OLR OVERLOAD RELAY
- P PLUG
- PL PLUG ASSEMBLY
- POT POTENTIOMETER
- QT QUADRUPLE TERMINAL
- R RELAY
- RAT RETURN AIR TEMP. SEN
- RVS REVERSING VALVE SOLENOID
- SAT SUPPLY AIR TEMP. SEN
- TB TERMINAL BLOCK
- TDR TIME DELAY RELAY
- TRAN TRANSFORMER

LEGEND

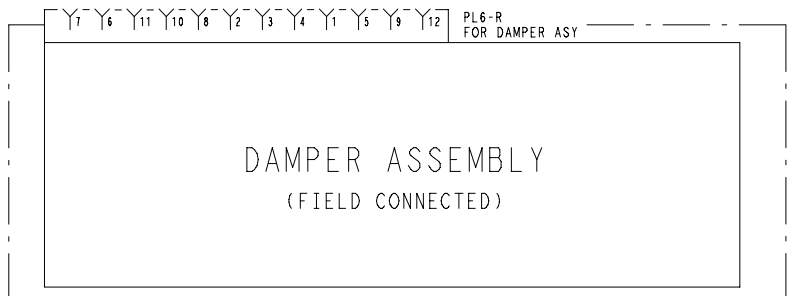
- FIELD SPLICE
- MARKED WIRE
- TERMINAL (MARKED)
- TERMINAL (UNMARKED)
- TERMINAL BLOCK
- SPLICE
- SPLICE (MARKED)
- FACTORY WIRING
- FIELD CONTROL WIRING
- FIELD POWER WIRING
- ACCESSORY OR OPTIONAL WIRING
- TO INDICATE COMMON POTENTIAL ONLY: NOT TO REPRESENT WIRING



SCHEMATIC



NOTES



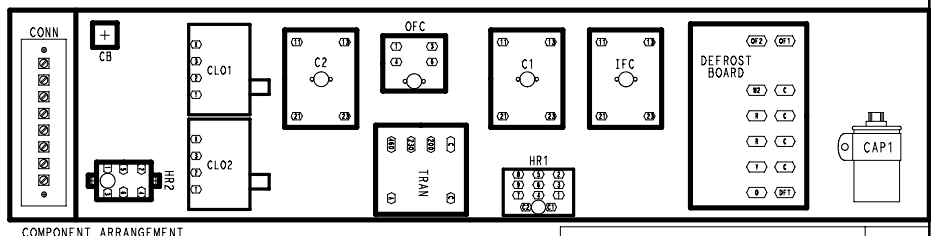
1. IF ANY OF THE ORIGINAL WIRE FUP MUST BE REPLACED, IT MUST BE REPLACED WITH TYPE 90° C WIRE OR ITS EQUIVALENT.
2. THREE PHASE MOTORS ARE PROTECTED UNDER PRIMARY SINGLE PHASING CONDITIONS.
3. FOR THERMOSTAT AND SUBBASE PART NO. SEE PRICE PAGES.
4. SET HEAT ANTICIPATOR AT .8 AMP FOR 1ST STAGE & .3 AMP FOR 2ND STAGE.
5. USE COPPER CONDUCTORS ONLY.
6. USE COPPER, COPPER CLAD ALUMINUM OR ALUMINUM CONDUCTORS.

VOLTAGE RATING	CB	MUST TRIP
	MFG. PT. NO.	AMPS
24V	POTTER & BRUMFIELD W28X-1024-3.2	3.2

- AHA ADJUSTABLE HEAT ANTICIPATOR
- C CONTACTOR, COMPRESSOR
- CAP CAPACITOR
- CB CIRCUIT BREAKER
- CC COOLING CAPACITOR
- CLO COMPRESSOR LOCKOUT
- COMP COMPRESSOR MOTOR
- D DIODE
- DB DEFROST BOARD
- DFT DEFROST THERMOSTAT
- EC ENTHALPY CONTROL
- ECON ECONOMIZER
- EPS EMERGENCY POWER SUPPLY (NINE VOLT BATTERY)
- EQUIP EQUIPMENT
- ER ECONOMIZER RELAY
- FPT FREEZE UP PROTECTION THERMOSTAT
- FU FUSE
- GND GROUND
- HC HEATER CONTACTOR (STRIP HEAT)
- HP HEAT PUMP
- HPS HIGH PRESSURE SWITCH
- HR HEATER RELAY
- IFC INDOOR FAN CONTACTOR
- IFM INDOOR FAN MOTOR
- IFMOVL INDOOR FAN MOTOR OVERLOAD SWITCH
- LPS LOW PRESSURE SWITCH
- LSM LIMIT SWITCH (MANUAL RESET)
- MTR MOTOR
- OAT OUTDOOR AIR THERMOSTAT
- OFM OUTDOOR FAN MOTOR
- OFC OUTDOOR FAN CONTACTOR
- P PLUG
- PL PLUG ASSEMBLY
- R RELAY
- RVS REVERSING VALVE SOLENOID
- SAT SUPPLY AIR THERMOSTAT
- SW1 SWITCH FULLY OPEN
- SW2 SWITCH FULLY CLOSED
- SW3 SWITCH MIN. VENT POSITION
- SW4 SWITCH MAX. VENT POSITION
- TB TERMINAL BLOCK
- TC THERMOSTAT-COOLING
- TH THERMOSTAT-HEATING
- TRAN TRANSFORMER

LEGEND

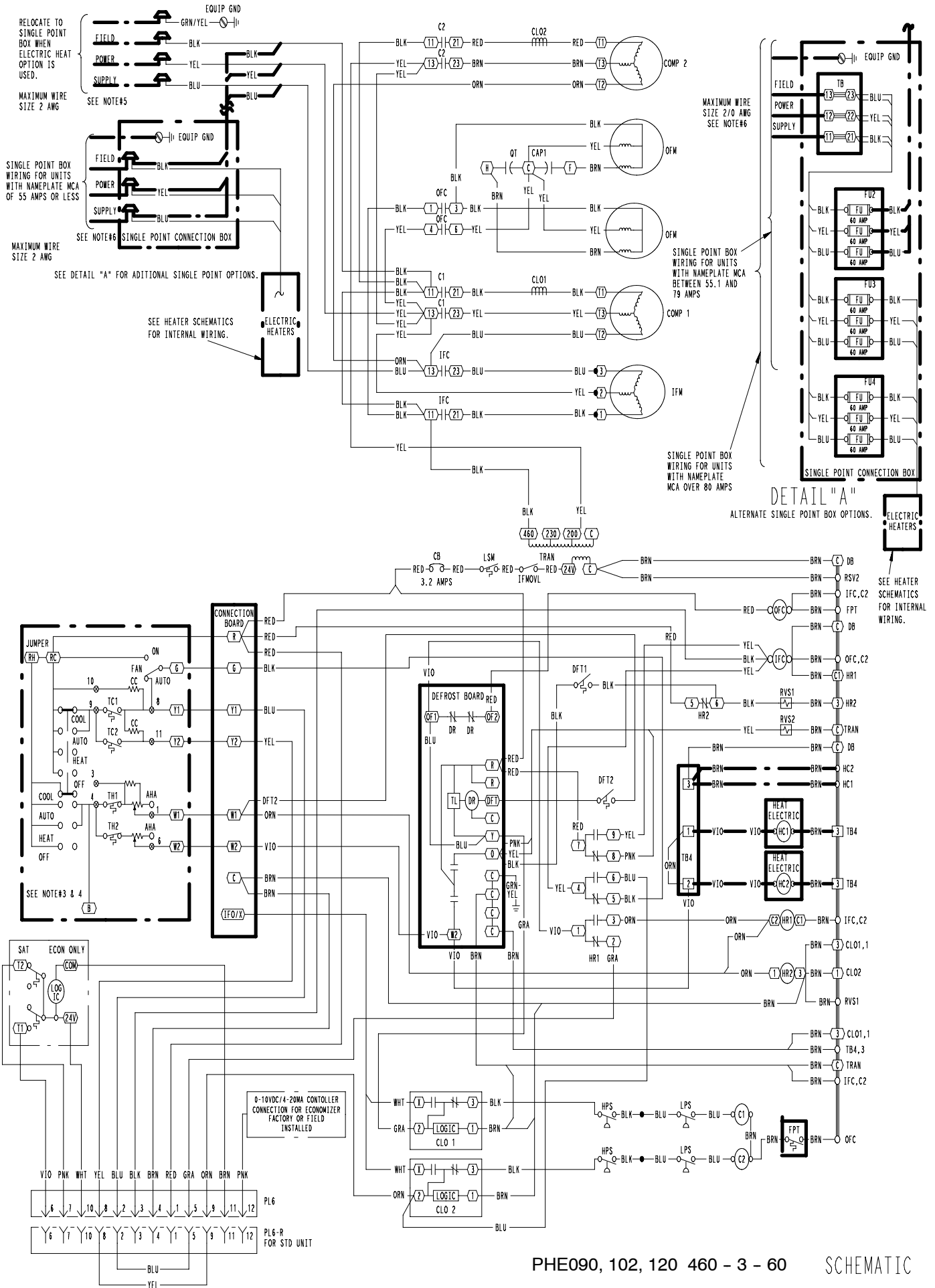
- FIELD SPLICE
- MARKED WIRE
- TERMINAL (MARKED)
- TERMINAL (UNMARKED)
- TERMINAL BLOCK
- TERMINAL ECON 2 POSITION BOARD
- SPLICE
- SPLICE (MARKED)
- FACTORY WIRING
- FIELD CONTROL WIRING
- FIELD POWER WIRING
- ACCESSORY OR OPTIONAL WIRING
- TO INDICATE COMMON POTENTIAL ONLY:
- NOT TO REPRESENT WIRING

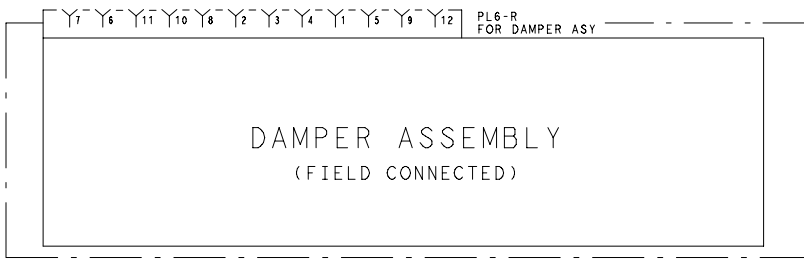
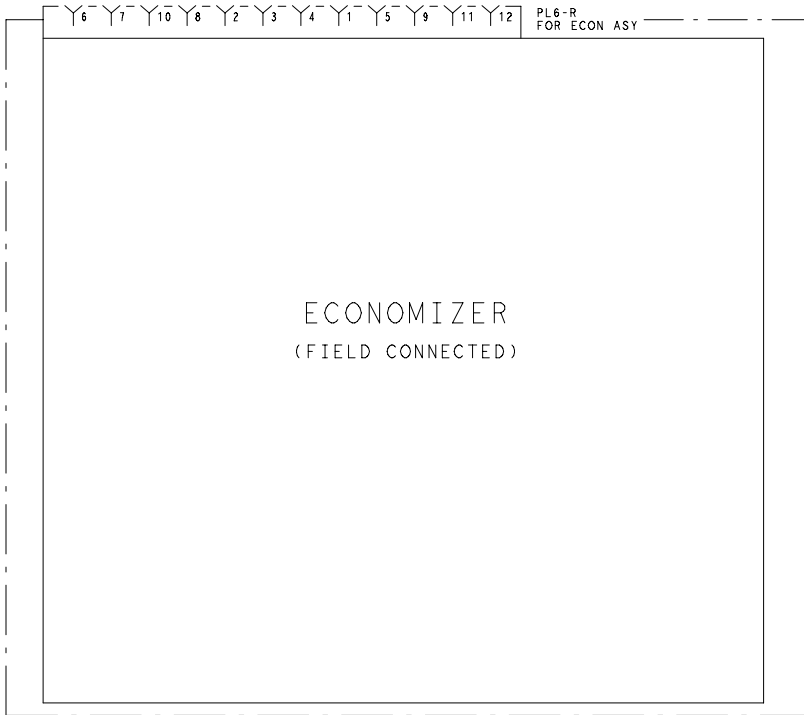


COMPONENT ARRANGEMENT

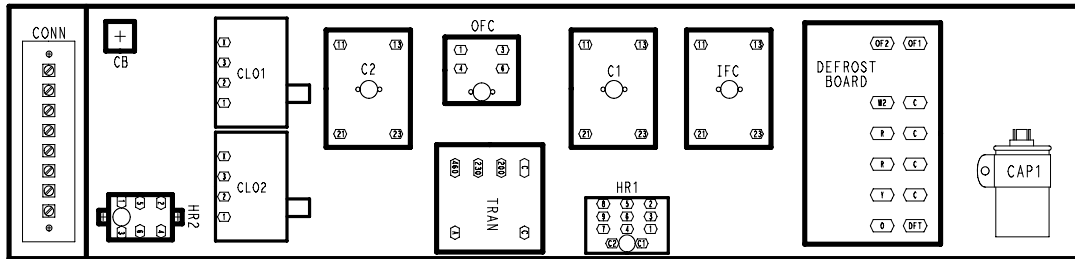
50HJ540584

3.0





- AHA ADJUSTABLE HEAT ANTICIPATOR
- C CONTACTOR, COMPRESSOR
- CAP CAPACITOR
- CB CIRCUIT BREAKER
- CC COOLING CAPACITOR
- CLO COMPRESSOR LOCKOUT
- COMP COMPRESSOR MOTOR
- D DIODE
- DB DEFROST BOARD
- DFT DEFROST THERMOSTAT
- EC ENTHALPY CONTROL
- ECON ECONOMIZER
- EPS EMERGENCY POWER SUPPLY (NINE VOLT BATTERY)
- EQUIP EQUIPMENT
- ER ECONOMIZER RELAY
- FPT FREEZE UP PROTECTION THERMOSTAT
- FU FUSE
- GND GROUND
- HC HEATER CONTACTOR (STRIP HEAT)
- HP HEAT PUMP
- HPS HIGH PRESSURE SWITCH
- HR HEATER RELAY
- IFC INDOOR FAN CONTACTOR
- IFM INDOOR FAN MOTOR
- IFMOVL INDOOR FAN MOTOR OVERLOAD SWITCH
- LPS LOW PRESSURE SWITCH
- LSM LIMIT SWITCH (MANUAL RESET)
- MTR MOTOR
- OAT OUTDOOR AIR THERMOSTAT
- OFM OUTDOOR FAN MOTOR
- OFC OUTDOOR FAN CONTACTOR
- P PLUG
- PL PLUG ASSEMBLY
- R RELAY
- RVS REVERSING VALVE SOLENOID
- SAT SUPPLY AIR THERMOSTAT
- SW1 SWITCH FULLY OPEN
- SW2 SWITCH FULLY CLOSED
- SW3 SWITCH MIN. VENT POSITION
- SW4 SWITCH MAX. VENT POSITION
- TB TERMINAL BLOCK
- TC THERMOSTAT-COOLING
- TH THERMOSTAT-HEATING
- TRAN TRANSFORMER



COMPONENT ARRANGEMENT

LEGEND

- FIELD SPLICE
- MARKED WIRE
- TERMINAL (MARKED)
- TERMINAL (UNMARKED)
- TERMINAL BLOCK
- TERMINAL ECON 2 POSITION BOARD
- SPLICE
- SPLICE (MARKED)
- FACTORY WIRING
- FIELD CONTROL WIRING
- FIELD POWER WIRING
- ACCESSORY OR OPTIONAL WIRING
- TO INDICATE COMMON POTENTIAL ONLY; NOT TO REPRESENT WIRING

NOTES

1. IF ANY OF THE ORIGINAL WIRE FURNISHED MUST BE REPLACED, IT MUST BE REPLACED WITH TYPE 90° C WIRE OR ITS EQUIVALENT.
2. THREE PHASE MOTORS ARE PROTECTED UNDER PRIMARY SINGLE PHASING CONDITIONS.
3. FOR THERMOSTAT AND SUBBASE PART NO. SEE PRICE PAGES.
4. SET HEAT ANTICIPATOR AT .8 AMP FOR 1ST STAGE & .3 AMP FOR 2ND STAGE.
5. USE COPPER CONDUCTORS ONLY.
6. USE COPPER, COPPER CLAD ALUMINUM OR ALUMINUM CONDUCTORS.

VOLTAGE RATING	CB	MUST TRIP AMPS
	MFG. PT. NO.	
24V	POTTER & BRUMFIELD	3.2
	W28X-1024-3.2	

50HJ540585