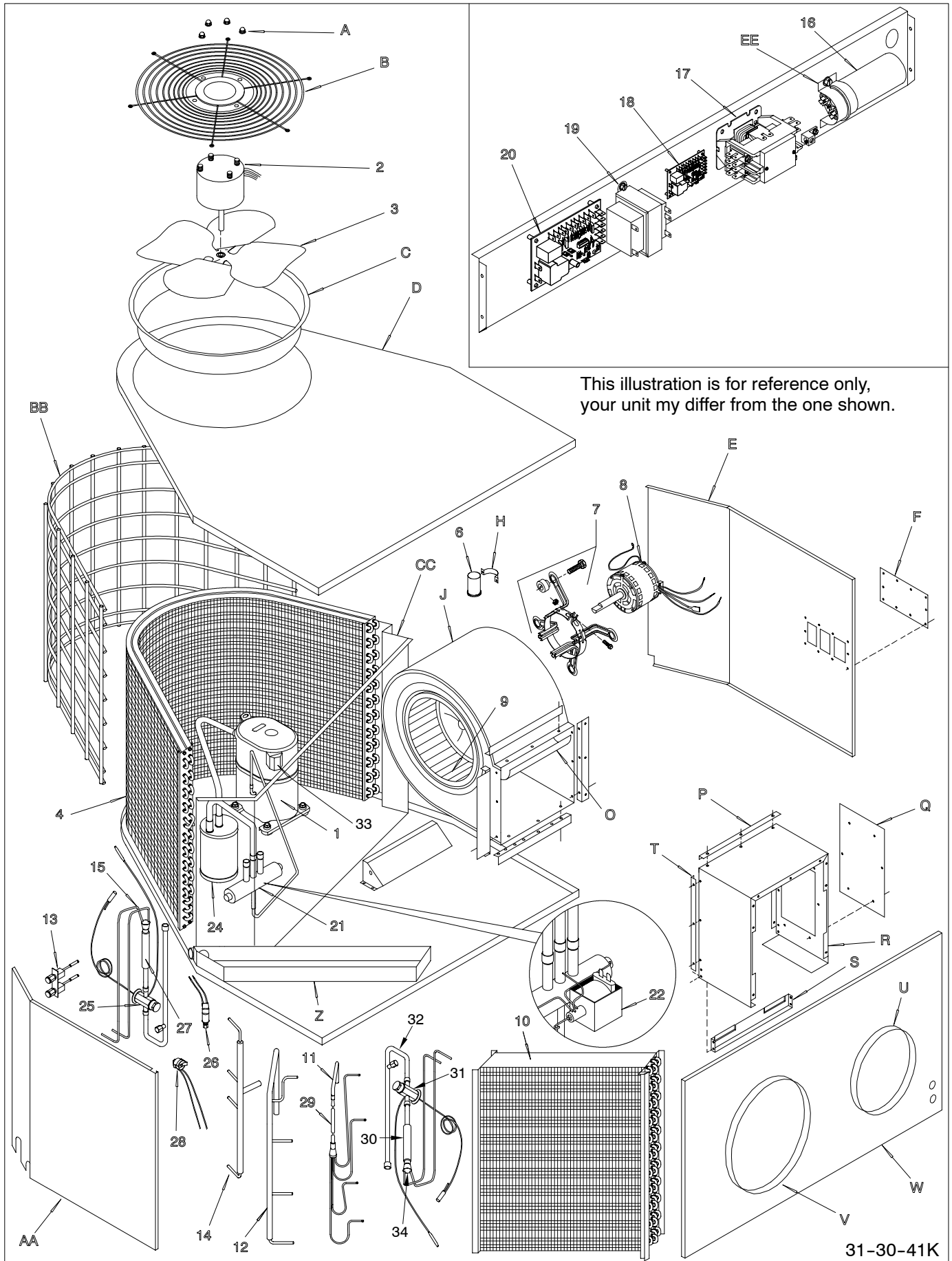


Parts List, Wiring Diagrams, Tech Labels - PH55/PYPA Series, Three Phase



31-30-41K

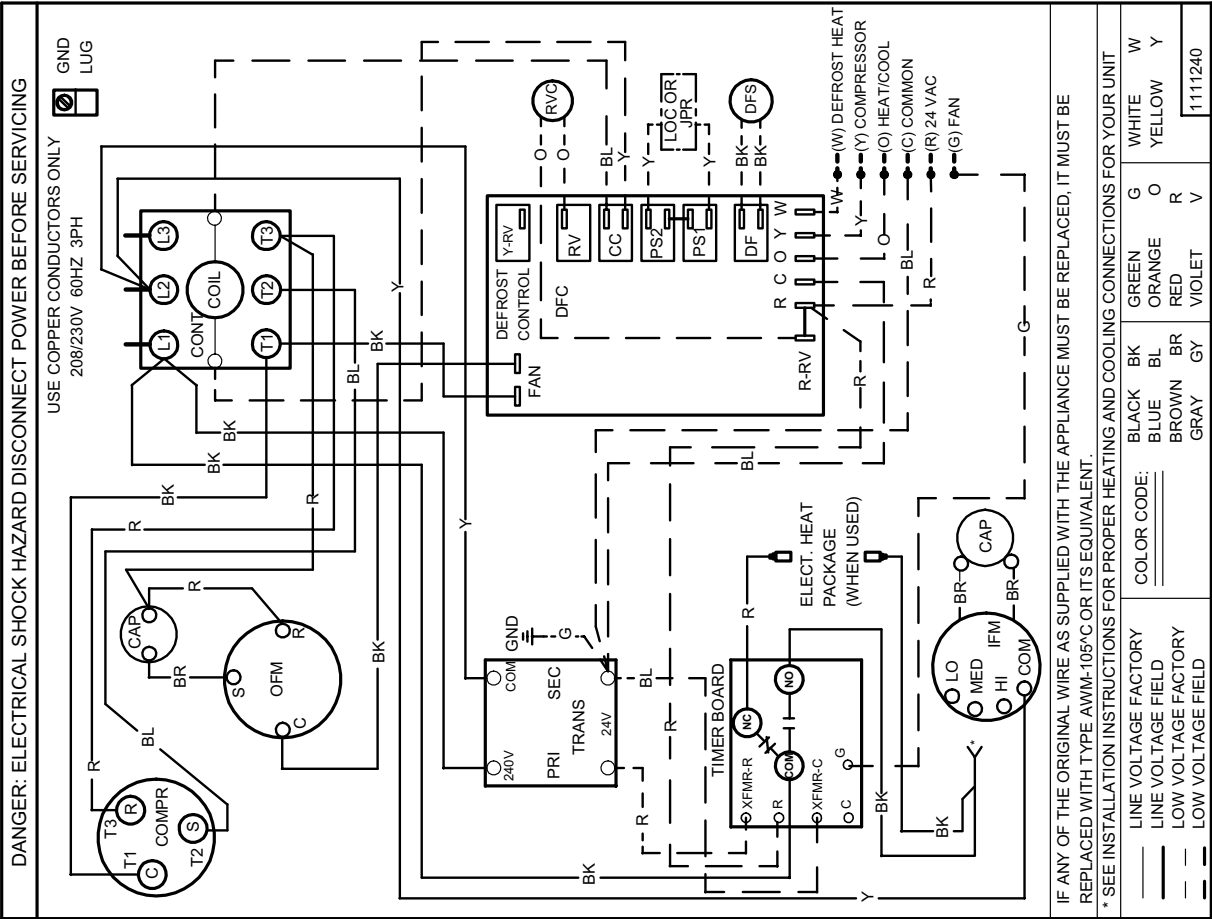
Parts List, Wiring Diagrams, Tech Labels - PH55/PYPA Series, Three Phase

KEY NO.	DESCRIPTION	PART NUMBER				KEY NO.	DESCRIPTION	PART NUMBER			
			PH5536AHAG PYPA36HA6	PH5548AHAG PYPA48HA6	PH5560AHAG PYPA60HA6				PH5536AHAG PYPA36HA6	PH5548AHAG PYPA48HA6	PH5560AHAG PYPA60HA6
1	Compressor, With Plug Connector	CR35K6TF5130	1			A	Nut, Cap	1067902	4	4	4
1		ZR45KCTF5135	*	1		AA	Panel, Side (Evaporator)	1110579	1	1	1
1		ZR57K3TF5130	*	*	1	B	Grille, Top	1084490	1	1	*
2	Motor, Condenser Fan	1085926	1	1	1	B		1072868	*	*	1
3	Fan Blade, Condenser	1096902	1	1	1	BB	Grille, Inlet	1081378	1	1	1
4	Coil, Condenser	1110860	1	*	*	C	Orifice, Condenser Fan	1065724	1	1	1
4		1110854	*	1		CC	Panel Center	1097342	1	1	1
4		1110825	*	*	1	D	Panel, Top	1068344	1	1	1
6	Capacitor, 5Mfd / 370Volt	1094954	1	*	*	E	Panel, Side (Blower)	1110577	1	1	1
6	20Mfd / 370Volt	1094961	*	1	1	EE	Capacitor mounting strap comp/cond mtr.	1171552	1	1	1
7	Mount, Blower Motor Kit	1057955	1	1	*	F	Cover, Side (Blower)	1081375	1	1	1
7		522020024	*	*	1	H	Capacitor mounting strap	1095020	1	*	*
8	Motor, Blower	1081399	1	*	*	H		1095022	*	1	1
8		1081194	*	1	*	J	Housing, Blower	1110940	1	1	*
8		1082177	*	*	1	J		1099246	*	*	1
9	Wheel, Blower	706038	1	*	*	O	Panel, Blower Cutoff	95143	1	1	*
9		1082068	*	1	*	O		1082176	*	*	1
9		1082069	*	*	1	P	Bracket, Heater Box	1081114	1	1	1
10	Coil, Evaporator	1097604M	1	*	*	Q	Plate, Cover	1083655	1	1	1
10		1097609M	*	1	*	R	Heater Box	1081111	1	1	1
10		1097615M	*	*	1	S	Bracket, Heater Box	1081112	1	1	1
11	Feeder Tube Assembly (Evaporator)	1111168	1	*	*	T	Bracket, Heater Box	1081113	1	1	*
11		1081299	*	1	*	T	Bracket, Heater Box	1082179	*	*	1
11		1113848	*	*	1	U	Ring, Air Duct 12"	1066734	1	1	1
12	Manifold, Included with Evap. Coil					V	Ring, Air Duct 14"	1066735	1	1	1
13	Port Assembly, (Test)	1083656	1	1	1	W	Panel, Rear	1110986	1	1	1
14	Manifold Included with Cond. Coil					Z	Pan, Drain	1081120	1	1	1
15	Distributor (Condenser)	1065873	1	*	*)	Clip, Accumulator Mounting	1053480	1	1	1
15		1065884	*	1	*)	Grommet, Compressor Mounting	1053188	4	*	*
15		1063218	*	*	1)	Grommet, Compressor Mounting	1052060	*	4	4
16	Capacitor, 5Mfd / 370Volt	1172149	1	1	1)	Manual, Parts List	42704101000	1	1	1
17	Contact, 20 Amp	1114069	1	1	*						
17	30 Amp	1114066	*	*	1						
18	Control, Blower T.D.	1110752	1	1	1						
19	Transformer	1082611	1	1	1						
20	Control, Defrost	1087562	1	1	1						
21	Valve, Reversing	34329000	1	*	*						
21		34329002	*	1	1						
22	Coil, Reversing, Valve (24V)	34329055	1	1	1						
24	Accumulator	1053427	1	*	*						
24		1053428	*	1	1						
25	Valve, Expansion (Condenser)	1082032	1	*	*						
25		1082034	*	1	*						
25		1083407	*	*	1						
26	Switch, Low Pressure	1085492	*	1	1						
27	Tube W/Strainer (Condenser)	1068116	1	1	1						
28	Sensor, Defrost	1098065	1	*	*						
28		1170890	*	1	1						
29	Restrictor, Flow Control .069 (Evaporator)	1082045	1	*	*						
29	.081	1082047	*	1	*						
30	Tube W/Strainer (Evaporator)	1083529	*	*	1						
31	Valve, Expansion (Evaporator)	1082295	*	*	1						
32	Tube W/Strainer / TXV	1083428	*	*	1						
33	Plug, Compressor Harness	1083654	1	1	1						
34	Distributor (Evaporator)	1063218	*	*	1						

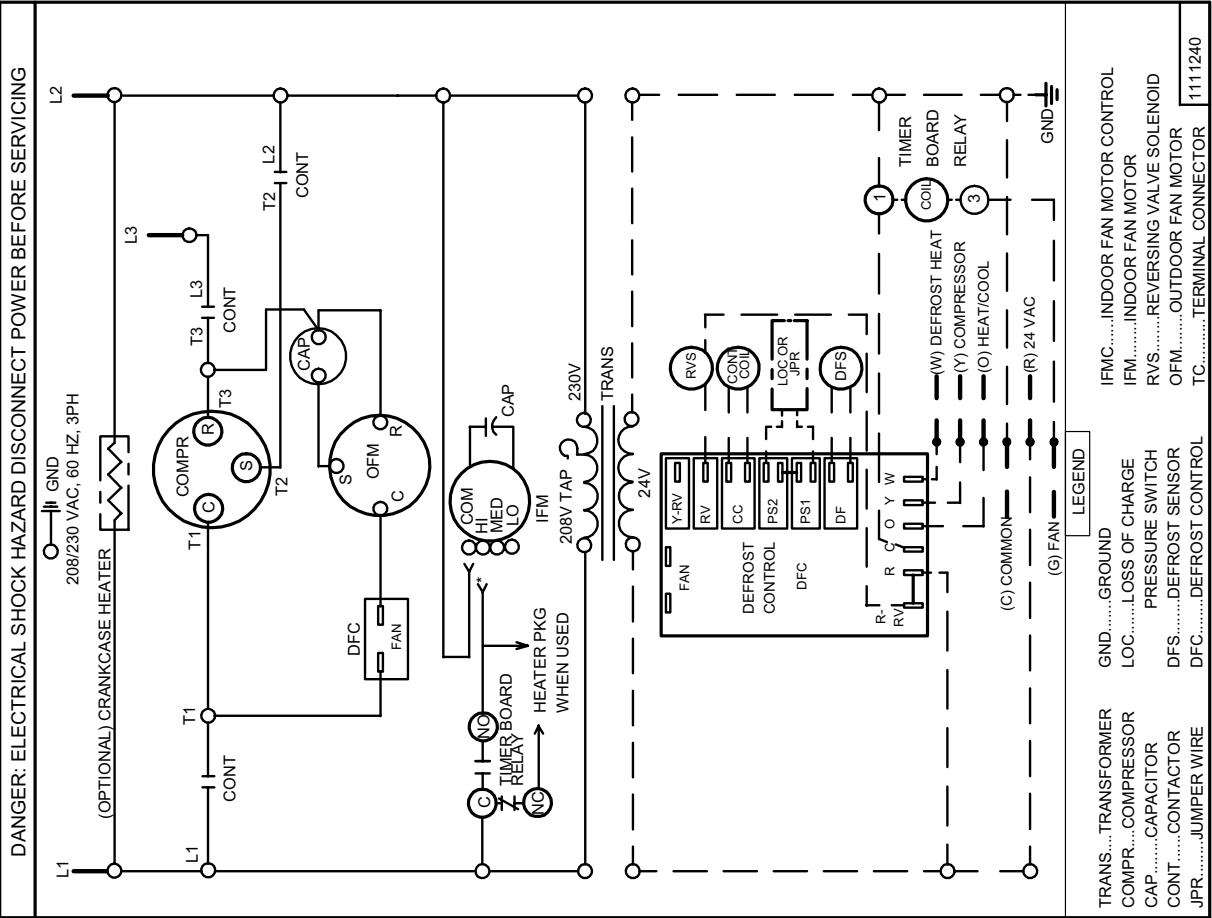
Parts List, Wiring Diagrams, Tech Labels - PH55/PYPA Series, Three Phase

Wiring Diagram - All Units

CONNECTION WIRING DIAGRAM



LADDER WIRING DIAGRAM



Parts List, Wiring Diagrams, Tech Labels - PH55/PYPA Series, Three Phase

5 TON TECH LABEL

Style No:	5 Ton Pkg Heat Pump / 3 Ph		Outdoor Ambient Temperature - Degrees F. Dry Bulb																				
			75				85				95				105				115				
			Entering Indoor Temperature - Degrees F. Wet Bulb																				
Voltage	208 / 230		IDB	59	63	67	71	59	63	67	71	59	63	67	71	59	63	67	71	59	63	67	71
Phase/Cycles	3			MBh	52.0	53.5	57.9	62.2	50.7	52.2	56.5	60.7	49.5	51.0	55.2	59.2	47.0	48.4	52.4	56.2	43.6	44.8	48.5
Ampacity	31.8		S/T	0.88	0.79	0.60	0.38	0.90	0.81	0.61	0.39	0.93	0.83	0.63	0.41	0.97	0.86	0.65	0.42	0.98	0.87	0.66	0.42
Wire Ga/Length	NEC		AMPS	18.6	18.9	19.4	19.9	19.8	20.2	20.7	21.3	20.9	21.3	21.8	22.5	21.9	22.4	23.0	23.7	23.0	23.4	24.1	24.9
Delay Fuse	40		HI PR	213	229	242	252	242	260	275	286	275	296	313	326	310	333	352	367	342	368	389	406
Max. Fuse/HACR	50		LO PR	61	65	71	75	63	67	74	78	66	71	77	82	70	74	81	86	72	77	84	89
Compressor	COPELAND		MBh	52.9	54.1	57.8	61.7	51.6	52.8	56.4	60.3	50.4	51.5	55.0	58.8	47.9	48.9	52.3	55.9	44.3	45.3	48.4	51.7
RLA	19.3		S/T	0.97	0.91	0.74	0.55	0.99	0.93	0.76	0.56	1.00	0.96	0.78	0.58	1.00	0.99	0.81	0.61	1.00	1.00	0.82	0.61
LRA	123		AMPS	18.7	19.0	19.5	20.1	19.9	20.3	20.9	21.5	21.0	21.4	22.0	22.7	22.1	22.5	23.1	23.9	23.2	23.6	24.3	25.0
Cap MFD/V			HI PR	215	231	244	254	244	263	277	289	278	299	316	330	313	337	356	371	346	372	393	410
CC Heater			LO PR	62	65	71	76	64	68	74	79	67	71	78	83	70	75	82	87	73	77	85	90
Start Kit			MBh	53.8	54.9	57.5	61.3	52.5	53.6	56.1	59.8	51.3	52.3	54.7	58.4	48.7	49.6	52.0	55.5	45.1	46.0	48.2	51.4
Cond & Evap	Cond	Evap	S/T	1.00	0.98	0.88	0.72	1.00	1.00	0.90	0.73	1.00	1.00	0.93	0.76	1.00	1.00	0.97	0.79	1.00	1.00	0.98	0.79
Type	Fan	Blower	AMPS	18.8	19.2	19.7	20.2	20.1	20.5	21.0	21.6	21.2	21.6	22.2	22.8	22.3	22.7	23.3	24.1	23.3	23.8	24.5	25.2
Size	20	DD10-8	HI PR	217	233	246	257	247	265	280	292	281	302	319	333	316	340	359	374	349	376	397	414
Motor-HP	1/3	1	LO PR	62	66	72	77	65	69	75	80	68	72	79	84	71	76	83	88	74	78	85	91
Type	PSC	PSC	Heating																				
FLA	1.7	4.5	Outdoor Ambient Temperature - Degrees F. Dry Bulb																				
LRA	5	13	IDB	65	60	55	50	47	45	40	35	30	25	20	17	15	10	5	0	-5	-10		
RPM	1140	1075	MBh	76.4	72.1	67.3	62.8	60.0	58.1	53.5	49.1	46.9	42.0	37.0	34.0	32.7	29.4	26.0	22.7	19.4	15.9		
Cap MFD/V	7.5/370	20/370	T/R	37.3	35.1	32.8	30.6	29.2	28.3	26.1	23.9	22.8	20.4	18.0	16.6	16.0	14.3	12.7	11.1	9.4	7.7		
PTCR	N/A		KW	5.37	5.27	5.17	5.08	5.02	4.98	4.88	4.78	4.79	4.68	4.58	4.52	4.48	4.38	4.28	4.18	4.08	3.98		
Hi Press	N/A		AMPS	20.5	19.4	18.4	17.6	17.1	16.9	16.2	15.6	15.1	14.6	14.1	13.9	13.8	13.3	12.7	12.2	11.6	10.9		
Low Press	N/A		COP	4.16	4.00	3.80	3.62	3.50	3.42	3.21	3.00	2.87	2.62	2.36	2.20	2.14	1.96	1.78	1.59	1.39	1.17		
Low Amb	N/A		EER	14.2	13.7	13.0	12.4	12.0	11.7	11.0	10.3	9.8	9.0	8.1	7.5	7.3	6.7	6.1	5.4	4.8	4.0		
LOC Press	YES		HI PR	236	226	217	208	203	199	191	184	176	168	161	158	155	149	143	137	132	128		
Defrost	Timed		LO PR	61	57	53	49	46	44	41	36	33	29	26	24	23	19	17	14	12	10		
Sensor	31 / 51		Air Delivery in CFM - Dry Coil (Add .08 static W/Internal Filters - Subtract 25 CFM for Wet Coil)																				
Operating Chg	(R-22 Oz)		230 Volt								208 Volt								Part No: 1083750				
	121		External Static Pressure (Inch Water Column)								External Static Pressure (Inch Water Column)												
Service Driers			Motor Speed	0.15	0.25	0.35	0.45	0.55	0.65	0.75	Speed Tap	0.15	0.25	0.35	0.45	0.55	0.65	0.75					
Liquid/Chg	30 Cu In / 17 oz		HI	-	2214	2139	2050	1948	1866	1808	HI	-	1881	1818	1742	1655	1586	1536					
Suction	30 Sq In		MD HI	-	1919	1878	1837	1789	1737	1692	MD HI	-	1631	1596	1561	1520	1476	1438					
Unit Weight	442		MD LO	-	-	-	-	-	-	-	MD LO	-	-	-	-	-	-	-					
			LO	-	-	-	-	-	-	-	LO	-	-	-	-	-	-	-					