

# Parts List, Charging Charts, Wiring Diagrams

**PGS072 - PGS150 SERIES**

**PACKAGE GAS ELECTRIC UNITS**



## TABLE OF CONTENTS

PARTS LIST-----	2-9
PARTS DRAWING-----	10-24
CHARGING CHARTS--	25-27
WIRING DIAGRAMS---	28-39

PGS072 PARTS LIST					
KEY NO.	DESCRIPTION	FAST PARTS NO.	PGS072H150AA	PGS072L150AA	PGS072S150AA
1	CONTACTOR 2P 20A 24V	1171160	*	1	1
1	CONTACTOR 2P 30A 24V	1171554	1	*	*
2	TRANS 208/230>24 40VA	1173691	1	*	*
2	TRANSFORMER	1175310	*	1	*
2	TRANSFORMER 575V	1175311	*	*	1
3	CAP RN OV 370V 10 AERO	1171807	1	1	*
3	CAP RN OV 370V 5	1172149	*	*	1
4	RELAY 24V DPST 9100-211Q28	1171809	1	1	*
4	RELAY	1175309	*	*	1
5	BOARD TERMINAL LO VOLT 8P	1171488	1	1	1
6	BLOWER ASY	1175283	1	1	1
7	BEARING	1175424	2	2	2
8	BLOWER WHEEL	1175318	1	1	1
9	KEY	1175493	1	1	1
10	MOTOR BLW 575 3 1725	1175305	*	*	1
10	MOTOR BLW 230/460 3 1750	1175478	1	1	*
11	PULLEY	1175314	1	1	1
12	PULLEY 5/8 X 4.25	1175494	1	1	1
13	BELT V A39 41"	1170556	1	1	1
14	COIL	1175247	1	1	1
15	COIL	1175251	1	1	1
16	RACEWAY	1171428	1	1	1
17	FILTER AIR	1175312	2	2	2
18	MTR CND 1/460 1/4	1171334	*	1	*
18	MTR CND 1/230 1/4	1171335	1	*	*
18	MOTOR CND 575 1 1100	1175303	*	*	1
19	FAN C 22" 3B 1/2" 24 INT	1171220	1	1	1
20	TEMP ACT SWITCH	1175306	1	1	1
21	COMP SRJ752AC 575/3/60	1172106	*	*	1
21	COMP SRY752AC 230/3/60	1172107	1	*	*
21	COMP SRH752AC 460/3/60	1172108	*	1	*
22	FREEZE STAT O30 C45	1171252	1	1	1
23	MODULE IGN UT 1068-12	1171165	*	1	1
23	MODULE IGN UT 1068-11	1171166	1	*	*
23	SWITCH PRESS LO O07 C22	1171412	*	*	1
24	HEAT EXCHANGER	1175236	1	1	1
25	BURNER ASSY	1175239	1	1	1
26	MANIFOLD ASY	1175234	1	1	1
27	BURNER ASY	1171087	1	1	1
28	BURNER ASY	1171095	2	2	2
29	SENSOR FLAME	1171449	1	1	1
30	IGNITOR	1171306	1	1	1
31	VALVE GAS (NAT)	1175302	1	1	1
32	ORIFICE MAIN 30	1171461	3	3	3
33	INDUCER MOTOR ASY 230V	1171314	1	*	*
33	INDUCER MOTOR ASY 460V	1171315	*	1	1
34	SENSOR HALL EFFECT	1171450	1	1	1
35	MTR VNT 1/460 1/16	1171347	*	1	1
35	MTR VNT 1/230 1/16HP	1171348	1	*	*
36	FAN C 3.25" 12B 5/16" INT	1171222	1	1	1
37	WHEEL SI5.75x.938x5/16 CCW	1171049	1	1	1

**PGS072 PARTS LIST (continued)**

KEY NO.	DESCRIPTION	FAST PARTS NO.	PGS072S150AA		
			PGS072H150AA	PGS072L150AA	PGS072S150AA
38	GASKET	1175268	1	1	1
39	HOOD EXHAUST	1171518	1	1	1
40	ROD BAFFLE	1171441	1	1	1
41	REGULATOR	1175288	1	1	1
42	BAFFLE	1175290	1	1	1
43	INSULATION ASY	1175237	1	1	1
44	CAP RN OV 370V 4	1175500	1	1	1
45	BOOT CAPACITOR	1171842	1	1	1
46	SWITCH LMT 195-80	1171325	1	1	1
47	FILTER DRIER	1175499	1	1	1
52	SWITCH PRESS HI O426 C320	1171553	1	1	1
53	SWITCH PRESS LO O07 C22	1171412	1	1	*
54	TRANS 575>460 250VA	1174450	*	*	1
55	CIRCUIT BREAKER	1175307	*	*	1
59	SHAFT	1175422	1	1	1
AA	PANEL	1175295	1	1	1
AB	PANEL ASY	1175226	1	1	1
AC	COVER ASY	1175227	1	1	1
AD	COVER ASY	1175228	1	1	1
AE	PANEL	1175293	1	1	1
AF	POST	1175269	1	1	1
AG	PARTITION	1175292	1	1	1
AH	BRACKET	1175262	1	1	1
AJ	PANEL	1175277	1	1	1
AK	GROMMET COMPRESSOR 1.62"DIA	1171270	4	4	4
AL	PANEL	1175241	1	1	1
AM	PANEL	1175242	1	1	1
AN	BRACKET	1175296	1	1	1
AP	GUARD LIMIT SWITCH	1171271	1	1	1
BA	INSULATION	1171317	1	1	1
BA	INSULATION	1175272	1	1	1
BB	HOUSING FAN	1171301	1	1	1
BC	CHANNEL DUCT	1171112	1	1	1
BD	FLAME RETAINER	1175287	1	1	1
BE	BRACKET	1175291	1	1	1
BF	PANEL	1175276	1	1	1
BK	POST. CENTER	1175254	1	1	1
BL	FRAME ASY	1175238	1	1	1
BM	BASE PAN ASY	1175232	1	1	1
BN	PLATE	1175267	1	1	1
BP	PLATE ASY	1175664	1	1	1
BS	COVER	1175233	1	1	1
BT	WIRE	1175258	1	1	1
A	SCROLL	1175260	1	1	1
B	CLAMP CAPACITOR OVAL	1171552	2	2	2
C	CONTROL BOX	1175257	1	1	1
D	PANEL	1171373	1	1	1
E	BRACKET	1175483	1	1	1
F	BRACKET ASY	1175423	2	2	2
G	PANEL ASY	1175229	1	1	1
H	POST ASY	1175230	2	2	2

**PGS072 PARTS LIST (continued)**

KEY NO.	DESCRIPTION	FAST PARTS NO.	PGS072H150AA	PGS072L150AA	PGS072S150AA
J	POST	1175255	1	1	1
K	PAN ASY	1175243	1	1	1
L	POST	1175256	1	1	1
M	DECK	1175259	1	1	1
N	BRACKET COIL (HEADER END)	1171070	1	1	1
P	PLATE	1175270	1	1	1
Q	COVER ASY	1175280	1	1	1
R	BASE PAN ASY	1175231	1	1	1
S	BRACKET BASE (CORNER)	1171071	2	2	2
T	RAIL	1175263	1	1	1
U	RAIL	1175265	1	1	1
V	RAIL	1175266	1	1	1
W	RAIL	1175279	1	1	1
X	PLATE	1175294	1	1	1
Y	GRILLE OUTLET	1171267	1	1	1
Z	COVER CONTROL	1171169	1	1	1
<b>PARTS NOT SHOWN</b>					
]]	PLUG ASSEMBLY ECONOMIZER	1171405	1	1	1
]]	WIRE HARNESS	1172171	1	1	1
]]	HARNESS ASY (YAC)	1175244	1	1	1
]]	BURNER WIRING KIT	1175246	1	1	1
]]	HARNESS ASY (COM WIRING)	1175281	1	1	*
]]	HARNESS ASY (COM WIRING)	1175282	*	*	1
]]	HARNESS ASY (PL6)	1175284	1	1	1
]]	CABLE	1175498	3	3	3
]]	HARNESS ASY (IFM)	1175663	1	1	1

PGS090 - 150 PARTS LIST

KEY NO.	DESCRIPTION	FAST PARTS NO.									
			PGS090H224AA	PGS090L224AA	PGS090S224AA	PGS120H250AA	PGS120L250AA	PGS120S250AA	PGS150H250AA	PGS150L250AA	PGS150S250AA
1	MTR BLT 3/208-460 5.0 1740	1171312	*	*	*	*	*	*	1	1	1
1	MTR BLT 3/208-460 2.5 1725	1171337	1	1	1	1	1	1	*	*	*
2A	KEY SHAFT 1/4X1/4X1-3/4	1171322	1	1	1	1	1	1	1	1	1
2	PULLEY 1 X 6.25 BK65	1171417	*	*	*	*	*	*	1	1	1
2	PULLEY 1 X 6.93 AM74	1171422	1	1	1	1	1	1	*	*	*
3	PULLEY 5/8 X 4.25	1171420	*	*	*	1	1	1	*	*	*
3	PULLEY 5/8 X 4.00	1171426	1	1	1	*	*	*	*	*	*
3	PULLEY 7/8 X 3.75 1VL40	1171557	*	*	*	*	*	*	1	1	1
4	BELT V A49 51"	1171513	*	*	*	1	1	1	*	*	*
4	BELT V A48 50"	1171516	1	1	1	*	*	*	*	*	*
4	BELT V BX46 49"	1171558	*	*	*	*	*	*	1	1	1
5	BRACKET ASY	1171062	2	2	2	2	2	2	2	2	2
6	PLATE FAN DRIVE SIDE	1171227	*	*	*	1	1	1	1	1	1
6	PLATE FAN	1171395	1	1	1	*	*	*	*	*	*
7	PLATE FAN	1171218	*	*	*	1	1	1	1	1	1
7	PLATE FAN	1171396	1	1	1	*	*	*	*	*	*
8	SCROLL FAN	1171223	*	*	*	1	1	1	1	1	1
8	SCROLL FAN	1171445	1	1	1	*	*	*	*	*	*
9	SHAFT BLR	1171452	1	1	1	1	1	1	1	1	1
10	PLATE MOTOR	1171388	1	1	1	1	1	1	1	1	1
11	BRACKET ASY MOTOR MOUNT	1171078	*	*	*	1	1	1	1	1	1
11	BRACKET ASY MOTOR MOUNT	1171345	1	1	1	*	*	*	*	*	*
12	PLATE	1171391	1	1	1	*	*	*	*	*	*
12	PLATE	1171399	*	*	*	1	1	1	1	1	1
13	BRACKET MOTOR	1171077	1	1	1	1	1	1	1	1	1
14	BOLT CARRIAGE 5/16-18 X 10	1171057	1	1	1	1	1	1	1	1	1
16	WHEEL BD15x15x1 REV CV DBL	1171050	1	1	1	1	1	1	1	1	*
16	VALVE N DSI 2STG WR 36C76470	1171263	*	*	*	*	*	*	*	*	1
17	BEARING BALL 1"	1171037	2	2	2	2	2	2	2	2	2
18	DECK FAN	1171214	1	1	1	1	1	1	1	1	1
19	BREAKER 7.4A 3 POLE 480V	1171079	*	*	*	*	*	*	*	1	1
19	BREAKER 15A 3 POLE 240V	1171080	*	*	*	*	*	*	1	*	*
20	BRACKET	1171063	*	*	*	*	*	*	1	1	1
26	RAIL BASE	1171031	1	1	1	1	1	1	1	1	1
28	RAIL BASE	1171032	1	1	1	1	1	1	1	1	1
29	PANEL OUTDOOR ACCESS	1171003	1	1	1	*	*	*	*	*	*
29	PANEL OUTDOOR ACCESS	1171356	*	*	*	1	1	1	*	*	*
29	PANEL OUTDOOR ACCESS	1171368	*	*	*	*	*	*	1	1	1
30	POST CORNER	1171172	*	*	*	1	1	1	1	1	1
30	POST CORNER	1171173	1	1	1	*	*	*	*	*	*
31	POST CORNER	1171174	*	*	*	1	1	1	1	1	1
31	POST CORNER	1171177	1	1	1	*	*	*	*	*	*
32	HOOD EXHAUST	1171518	1	1	1	1	1	1	1	1	1
33	ROD BAFFLE	1171441	1	1	1	1	1	1	1	1	1
34	POST CENTER COMP ACCESS	1171409	1	1	1	*	*	*	*	*	*
34	POST CENTER COMP ACCESS	1171410	*	*	*	1	1	1	1	1	1
35	PANEL INDOOR FAN ACCESS	1171004	1	1	1	*	*	*	*	*	*
35	PANEL INDOOR FAN ACCESS	1171364	*	*	*	1	1	1	1	1	1
36	BRACKET BASE (CORNER)	1171071	2	2	2	2	2	2	2	2	2
37	COVER ASY TOP	1171365	1	1	1	1	1	1	1	1	1
38	PANEL COMP ACCESS	1171139	1	1	1	*	*	*	*	*	*

**PGS090 - 150 PARTS LIST (continued)**

KEY NO.	DESCRIPTION	FAST PARTS NO.	PGS090H224AA	PGS090L224AA	PGS090S224AA	PGS120H250AA	PGS120L250AA	PGS120S250AA	PGS150H250AA	PGS150L250AA	PGS150S250AA
38	PANEL COMP ACCESS	1171383	*	*	*	1	1	1	1	1	1
40	PANEL FILTER ACCESS	1171385	*	*	*	1	1	1	1	1	1
40	PANEL FILTER ACCESS	1171386	1	1	1	*	*	*	*	*	*
41	PANEL INDOOR END	1171308	*	*	*	1	1	1	1	1	1
41	PANEL INDOOR END	1171375	1	1	1	*	*	*	*	*	*
42	COVER RETURN AIR	1171180	*	*	*	1	1	1	1	1	1
42	COVER RETURN AIR	1171181	1	1	1	*	*	*	*	*	*
43	COVER SUPPLY AIR	1171182	1	1	1	1	1	1	1	1	1
44A	SEAL DRAIN LINE SQUARE	1171202	1	1	1	1	1	1	1	1	1
44	SEAL DRAIN LINE ROUND	1171447	1	1	1	1	1	1	1	1	1
45	PANEL END SKIRT	1171206	1	1	1	1	1	1	1	1	1
46	PANEL FILTER ACCESS LOWER	1171382	1	1	1	1	1	1	1	1	1
47	POST CENTER FILTER ACCESS	1171109	*	*	*	1	1	1	1	1	1
47	POST CENTER FILTER ACCESS	1171406	1	1	1	*	*	*	*	*	*
48	RAIL BASE	1171033	1	1	1	1	1	1	1	1	1
49	POST CORNER	1171175	2	2	2	*	*	*	*	*	*
49	POST CORNER	1171309	*	*	*	2	2	2	2	2	2
56	PAINT DARK GREY 16OZ AEROSOL	1171357	1	1	1	1	1	1	1	1	1
58	RACEWAY	1171428	2	2	2	2	2	2	2	2	2
59	GRILLE OUTLET	1171267	2	2	2	2	2	2	2	2	2
60	MTR CND 1/460 1/4	1171334	*	2	2	*	2	2	*	2	2
60	MTR CND 1/230 1/4	1171335	2	*	*	2	*	*	2	*	*
61	FAN C 22" 3B 1/2" 24 INT	1171220	2	2	2	2	2	2	2	2	2
64	RACEWAY 24V	1171326	*	*	*	1	1	1	1	1	1
64	RACEWAY-24VT	1171429	1	1	1	*	*	*	*	*	*
65	CONTROL BOX ASY COMPLETE	1171524	*	*	1	*	*	*	*	*	*
66	PANEL GAS	1171260	1	1	1	1	1	1	1	1	1
71	BASE PAN OUTDOOR	1171023	1	1	1	*	*	*	*	*	*
71	BASE PAN OUTDOOR	1171026	*	*	*	1	1	*	*	*	*
71	PAN CONDENSATE	1171156	*	*	*	*	1	*	*	*	*
71	PLATE COMP MOUNTING	1171393	*	*	*	*	1	*	*	*	*
72	BASE PAN OUTDOOR	1171026	*	*	*	*	*	1	*	*	*
72	PAN CONDENSATE	1171156	*	*	*	1	*	*	*	*	*
72	INDOOR BASE PAN	1171307	1	1	1	1	1	1	*	*	*
73	BRACKET (575V)	1171069	*	*	1	*	*	1	*	*	1
74	TRANS 240/480>120/240 .75KVA	1171497	*	*	2	*	*	2	*	*	*
75	COVER ASY HEAT	1171394	1	1	1	1	1	1	1	1	1
77	SWITCH LMT 135-40	1171324	1	1	1	1	1	1	1	1	1
78	GUARD LIMIT SWITCH	1171271	1	1	1	1	1	1	1	1	1
80	FREEZE STAT O30 C45	1171252	1	1	1	1	1	1	1	1	1
81	BRACKET COIL (HEADER END)	1171070	1	1	1	1	1	1	1	1	1
82	PAN CONDENSATE	1171359	1	1	1	1	1	1	1	1	1
83	BRACKET COIL (HAIRPIN END)	1171065	*	*	*	1	1	1	*	*	*
83	BRACKET COIL (HAIRPIN END)	1171119	*	*	*	*	*	*	1	1	1
84	FRAME ASY ECON TRACK	1171205	*	*	*	1	1	1	1	1	1
84	FRAME FILTER ASY	1171234	1	1	1	*	*	*	*	*	*
85	RETAINER FILTER	1171238	1	1	1	1	1	1	1	1	1
86	RETAINER FILTER	1171240	2	2	2	*	*	*	*	*	*
86	FILTER RETAINER	1171536	*	*	*	2	2	2	2	2	2
87	SUPPORT TRACK	1171472	1	1	1	1	1	1	1	1	1
88	FILTER AIR 16X20X2 DISP	1171230	4	4	4	*	*	*	*	*	*

PGS090 - 150 PARTS LIST (continued)

KEY NO.	DESCRIPTION	FAST PARTS NO.	PGS090H224AA	PGS090L224AA	PGS090S224AA	PGS120H250AA	PGS120L250AA	PGS120S250AA	PGS150H250AA	PGS150L250AA	PGS150S250AA
88	FILTER AIR 20X20X2 DISP	1171231	*	*	*	4	4	4	4	4	4
89	RETAINER FILTER	1171239	1	1	1	1	1	1	1	1	1
91	SENSOR FLAME	1171449	1	1	1	1	1	1	1	1	1
92	IGNITOR	1171306	1	1	1	1	1	1	1	1	1
93	SUPPORT BURNER	1171094	1	1	1	1	1	1	1	1	1
94	BURNER ASY	1171095	2	2	2	2	2	2	2	2	2
95	BURNER ASY	1171087	3	3	3	3	3	3	3	3	3
96	ORIFICE MAIN 30	1171461	*	*	*	5	5	5	5	5	5
96	ORIFICE MAIN 31	1171462	5	5	5	*	*	*	*	*	*
97	MANIFOLD ASY	1171328	1	1	1	1	1	1	1	1	1
98	VALVE N DSI 2STG WR 36C76470	1171263	1	1	1	1	1	1	1	1	*
98	TRANS 240/480>120/240 1KVA	1171495	*	*	*	*	*	*	*	*	2
99	BURNER ASY	1171089	1	1	1	*	*	*	*	*	*
99	BURNER ASY	1171090	*	*	*	1	1	1	1	1	1
100	BRACKET GAS VALVE	1171064	1	1	1	1	1	1	1	1	1
101	CHANNEL DUCT	1171112	1	1	1	1	1	1	1	1	1
102	INDUCER MOTOR ASY 230V	1171314	1	*	*	1	*	*	1	*	*
102	INDUCER MOTOR ASY 460V	1171315	*	1	1	*	1	1	*	1	1
103	HOUSING FAN	1171301	1	1	1	1	1	1	1	1	1
103A	INSULATION	1171317	1	1	1	1	1	1	1	1	1
104	SWITCH LMT 195-80	1171325	1	1	1	1	1	1	1	1	1
105	SUPPORT BURNER	1171473	1	1	1	1	1	1	1	1	1
106	MTR VNT 1/460 1/16	1171347	*	1	1	*	1	1	*	1	1
106	MTR VNT 1/230 1/16HP	1171348	1	*	*	1	*	*	1	*	*
107	FAN C 3.25" 12B 5/16" INT	1171222	1	1	1	1	1	1	1	1	1
108	WHEEL SI5.75x.938x5/16 CCW	1171049	1	1	1	1	1	1	1	1	*
108	WHEEL BD15x15x1 REV CV DBL	1171050	*	*	*	*	*	*	*	*	1
109	ANGLE	1171012	1	1	1	1	1	1	1	1	1
110A	SUPPORT HEAT EXCH	1171469	1	1	1	1	1	1	1	1	1
110	HT EX	1171287	1	1	1	*	*	*	*	*	*
110	HT EX	1171288	*	*	*	1	1	1	1	1	1
111	GASKET	1171264	1	1	1	1	1	1	1	1	1
112	REGULATOR EXHAUST	1171432	1	1	1	1	1	1	1	1	1
112A	GASKET REGULATOR	1171265	1	1	1	1	1	1	1	1	1
113	RETAINER FLAME	1171247	1	1	1	1	1	1	1	1	1
116	DRIER 08 CI 3/8"IN & OUT	1171232	1	1	1	*	*	*	*	*	*
116	DRIER 08 CI 3/8"IN & OUT	1171233	1	1	1	2	2	2	2	2	2
117	COIL COND	1171121	1	1	1	*	*	*	*	*	*
117	COIL COND	1171128	*	*	*	1	1	1	*	*	*
117	COIL COND	1171129	*	*	*	*	*	*	1	1	1
118	COIL EVAP	1171123	*	*	*	*	*	*	1	1	1
118	COIL EVAP	1171124	1	1	1	*	*	*	*	*	*
118	COIL EVAP	1171134	*	*	*	1	1	1	*	*	*
119	HEADER ASY UPPER	1171275	*	*	*	*	*	*	1	1	1
119	HEADER ASY UPPER	1171281	*	*	*	1	1	1	*	*	*
119	HEADER ASY UPPER	1171282	1	1	1	*	*	*	*	*	*
120	HEADER ASY LOWER	1171276	*	*	*	1	1	1	*	*	*
120	HEADER ASY LOWER	1171278	*	*	*	*	*	*	1	1	1
120	HEADER ASY LOWER	1171279	1	1	1	*	*	*	*	*	*
121	SWITCH PRESS HI O426 C320	1171303	2	2	2	2	2	2	2	2	2
122	SWITCH PRESS LO O07 C22	1171412	2	2	2	2	2	2	2	2	2

PGS090 - 150 PARTS LIST (continued)

KEY NO.	DESCRIPTION	FAST PARTS NO.	PGS090H224AA	PGS090L224AA	PGS090S224AA	PGS120H250AA	PGS120L250AA	PGS120S250AA	PGS150H250AA	PGS150L250AA	PGS150S250AA
123	BOLT HEX HEAD COMPRESSOR MTG	1171056	8	8	8	8	8	8	8	8	8
124	GROMMET COMPRESSOR 1.25"DIA	1171269	8	8	8	8	8	8	*	*	*
124	GROMMET COMPRESSOR 1.62"DIA	1171270	*	*	*	*	*	*	8	8	8
125	COMP CR42K6-TFD-960	1171141	*	2	*	*	*	*	*	*	*
125	COMP CR42K6-TF5-960	1171142	2	*	*	*	*	*	*	*	*
125	COMP CR42K6-TFE-960	1171146	*	*	2	*	*	*	*	*	*
125	COMP H28A583DBFA 704205	1171149	*	*	*	*	*	2	*	*	*
125	COMP H28A583DBEA 704248	1171150	*	*	*	*	2	*	*	*	*
125	COMP H28A583DBLA 704246	1171151	*	*	*	2	*	*	*	*	*
125	COMP SRH752AE 460-3-60	1171442	*	*	*	*	*	*	*	2	*
125	COMP SRY752AE 230/3/60	1171443	*	*	*	*	*	*	2	*	*
125	COMP SRJ752AE	1171444	*	*	*	*	*	*	*	*	2
127	CONTROL BOX	1171059	1	1	1	1	1	1	1	1	1
128	BREAKER 3.2A 1 POLE 250V	1171114	1	1	1	1	1	1	1	1	1
129	PANEL	1171373	1	1	1	1	1	1	1	1	1
130	CONTACTOR 2P 20A 24V	1171160	2	2	2	2	2	2	*	2	2
130	CONTACTOR 2P 30A 24V	1171163	*	*	*	*	*	*	3	*	*
131	RELAY 24V DPDT R8222D1121	1171435	1	1	1	1	1	1	1	1	1
132	CONTACTOR 2P 30A 24V	1171163	1	1	1	1	1	1	*	1	1
133	MODULE IGN UT 1068-12	1171165	*	1	1	*	1	1	*	1	1
133	MODULE IGN UT 1068-11	1171166	1	*	*	1	*	*	1	*	*
134	FUSE	1171099	1	1	1	1	1	1	1	1	1
135	BOARD TERMINAL LO VOLT 8P	1171488	1	1	1	1	1	1	1	1	1
137	TRANS 200/230/460>24 75VA	1171496	1	1	1	1	1	1	1	1	1
138	CLAMP	1171537	1	1	1	1	1	1	1	1	1
139	CAP RN OV 370V 10+10	1171105	1	1	1	1	1	1	1	1	1
PARTS NOT SHOWN											
]]	PLATE BLOCKOFF	1171040	1	1	1	*	*	*	*	*	*
]]	BLOWER ASY	1171043	1	1	1	*	*	*	*	*	*
]]	WHEEL SI5.75x.938x5/16 CCW	1171049	*	*	*	*	*	*	*	*	1
]]	BURNER ASY OUTER W/DIMPLE	1171088	1	1	1	1	1	1	1	1	1
]]	CAP FLARE	1171101	4	4	4	8	8	8	8	8	8
]]	CAP SEAL	1171102	*	*	*	4	4	4	*	*	*
]]	BOOT CAPACITOR SINGLE OVAL	1171106	1	1	1	1	1	1	1	1	1
]]	CAP RN OV 370V 4	1171107	1	1	1	1	1	1	1	1	1
]]	CONTROL BOX ASY COMPLETE	1171135	*	1	*	*	*	*	*	*	*
]]	PAN CONDENSATE	1171156	*	*	*	*	*	1	*	*	*
]]	CONTROL BOX ASY COMPLETE	1171168	1	1	1	1	1	1	1	1	1
]]	COVER CONTROL	1171169	1	1	1	1	1	1	1	1	1
]]	CORE VALVE	1171170	*	*	*	4	4	4	*	*	*
]]	PANEL FILTER ACCESS	1171200	*	*	1	*	*	*	*	*	*
]]	PARTITION GAS	1171261	1	1	1	1	1	1	1	1	1
]]	HOUSING PLUG	1171302	1	1	1	1	1	1	1	1	1
]]	INSULATION	1171318	1	1	1	1	1	1	1	1	1
]]	PANEL	1171374	*	*	*	1	1	1	1	1	1
]]	PANEL	1171384	1	1	1	*	*	*	*	*	*
]]	PANEL	1171387	*	*	*	*	*	1	*	*	1
]]	PLATE COMP MOUNTING	1171393	1	1	1	1	*	1	*	*	*
]]	PLUG	1171401	1	1	1	1	1	1	1	1	1
]]	PLUG ASSEMBLY ECONOMIZER	1171405	1	1	1	1	1	1	1	1	1
]]	RECEPTACLE	1171430	1	1	1	1	1	1	1	1	1

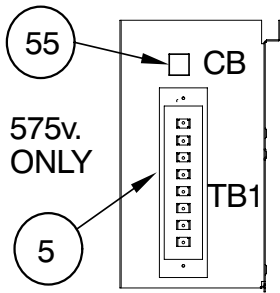
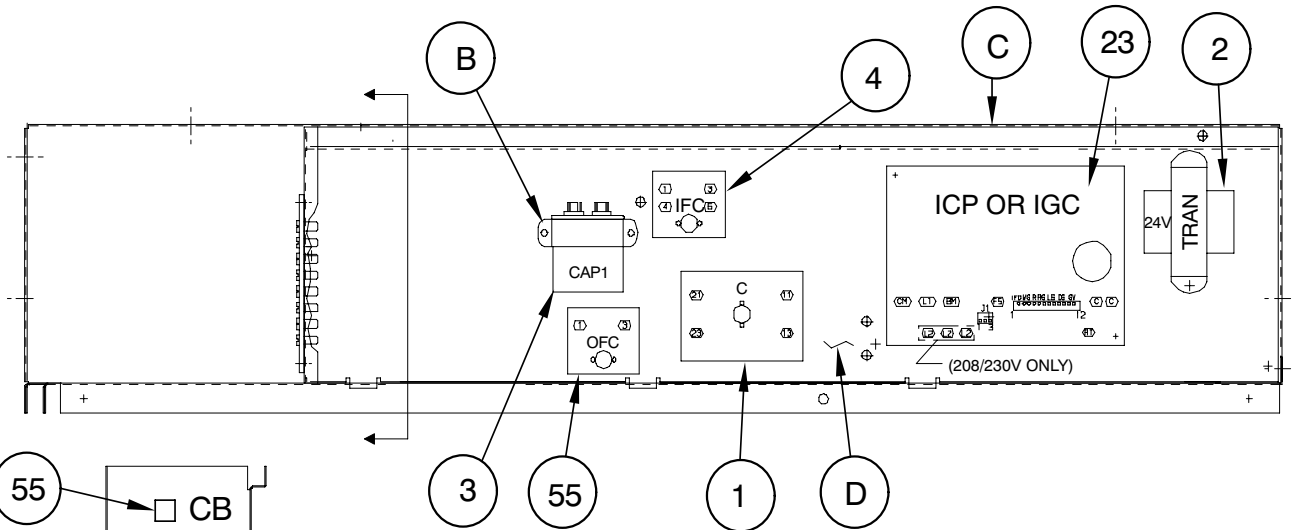


PGS090 - 150 PARTS LIST (continued)

KEY NO.	DESCRIPTION	FAST PARTS NO.	PGS090H224AA	PGS090L224AA	PGS090S224AA	PGS120H250AA	PGS120L250AA	PGS120S250AA	PGS150H250AA	PGS150L250AA	PGS150S250AA
]]	SENSOR HALL EFFECT	1171450	1	1	1	1	1	1	1	1	1
]]	SHIELD	1171453	2	2	2	2	2	2	2	2	2
]]	SUPPORT	1171466	1	1	1	1	1	1	1	1	1
]]	FITTING ACCESS	1171507	2	2	2	2	2	2	2	2	2
]]	CORE VALVE	1171508	8	8	8	8	8	8	8	8	8
]]	WIRE HARNESS	1171520	*	*	*	1	1	*	1	1	*
]]	WIRING ASS'Y. PLUG	1171523	1	1	1	1	1	1	1	1	1
]]	WIRING HARNESS	1171525	1	1	1	1	1	1	1	1	1
]]	WIRE HARNESS ASY PL6	1171526	1	1	1	1	1	1	1	1	1
]]	BELT DRIVE FAN PARTS (STD)	1171531	1	1	1	*	*	*	*	*	*
]]	BELT DRIVE FAN PARTS (STD)	1171532	*	*	*	1	1	1	*	*	*
]]	CLAMP CAPACITOR OVAL	1171552	1	1	1	1	1	1	1	1	1
]]	PANEL FILTER ACCESS	1171789	*	*	*	*	*	*	1	*	*
]]	PANEL FILTER ACCESS	1171790	*	*	*	*	1	*	*	1	*
]]	PANEL FILTER ACCESS	1171791	*	1	*	*	*	*	*	*	*
]]	BELT DRIVE FAN PARTS (ALT)	1171794	*	*	*	*	*	*	*	1	1
]]	BELT DRIVE FAN PARTS (ALT)	1171795	*	*	*	*	*	*	1	*	*
]]	PANEL FILTER ACCESS	1171797	*	*	*	1	*	*	*	*	*
]]	CONTROL BOX ASY	1171880	*	*	*	*	*	*	1	*	*
]]	WIR1NG KIT	1171894	1	1	1	1	1	1	1	1	1
]]	WIRE HARNESS	1172171	1	*	*	1	*	*	*	*	*
]]	WIRE HARNESS ASY	1173199	1	1	1	1	1	1	1	1	1
]]	CONV KIT NAT>LP	AXB345LPA	1	1	1	1	1	1	1	1	1

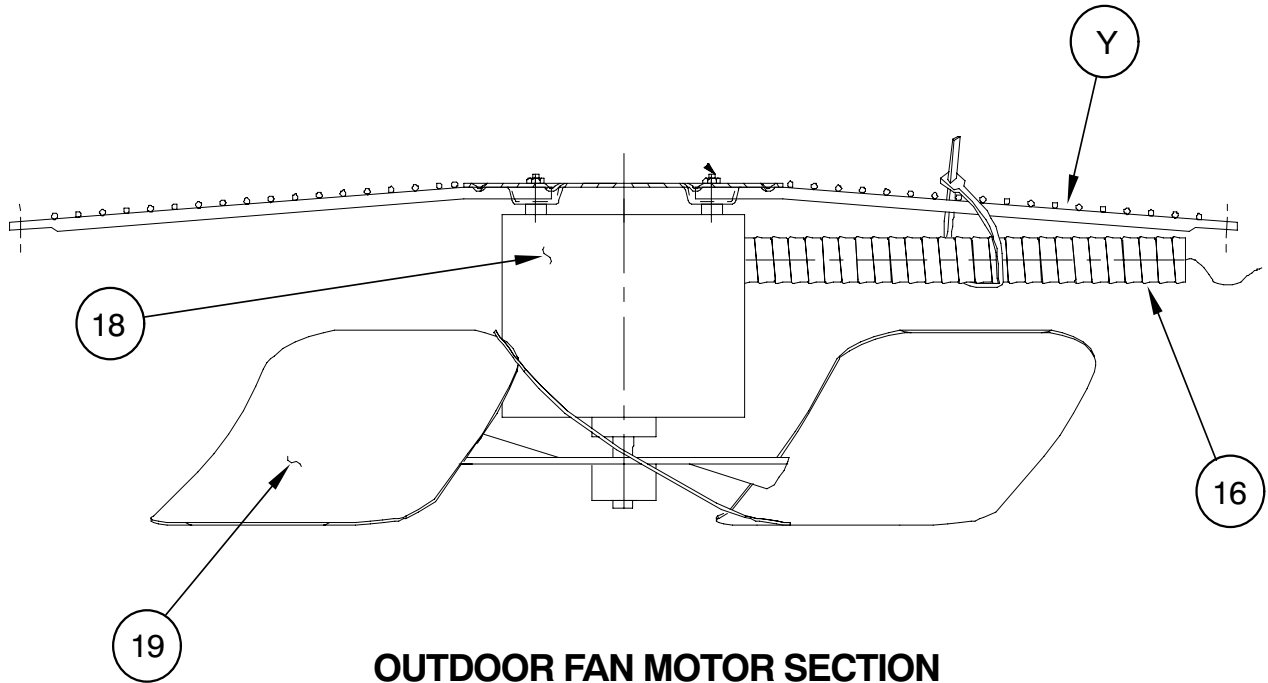
PGS072

NOTE: This illustration is for reference only. Your unit may differ in appearance or may not include all components shown.



VIEW C-C

CONTROL BOX ASY.

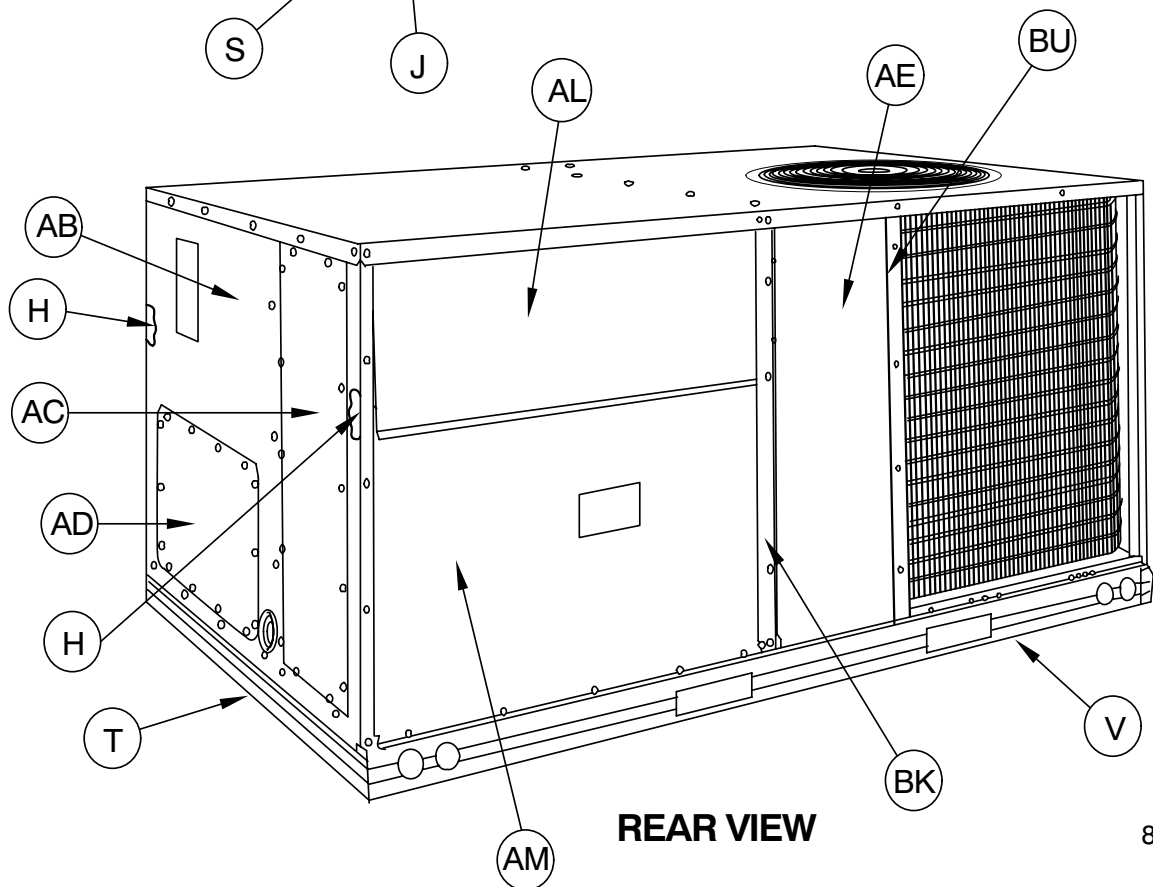
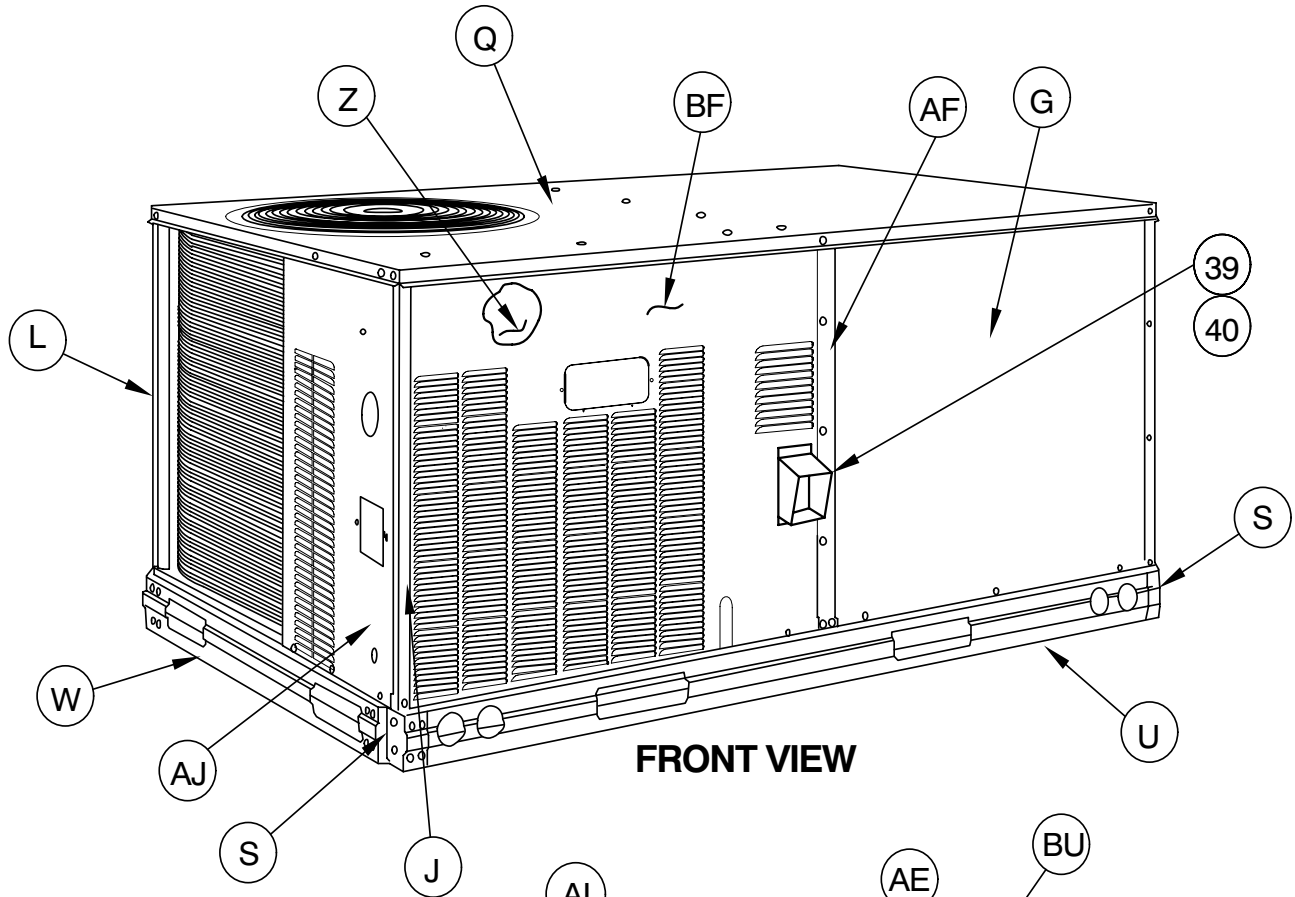


OUTDOOR FAN MOTOR SECTION

80-50-56

PGS072

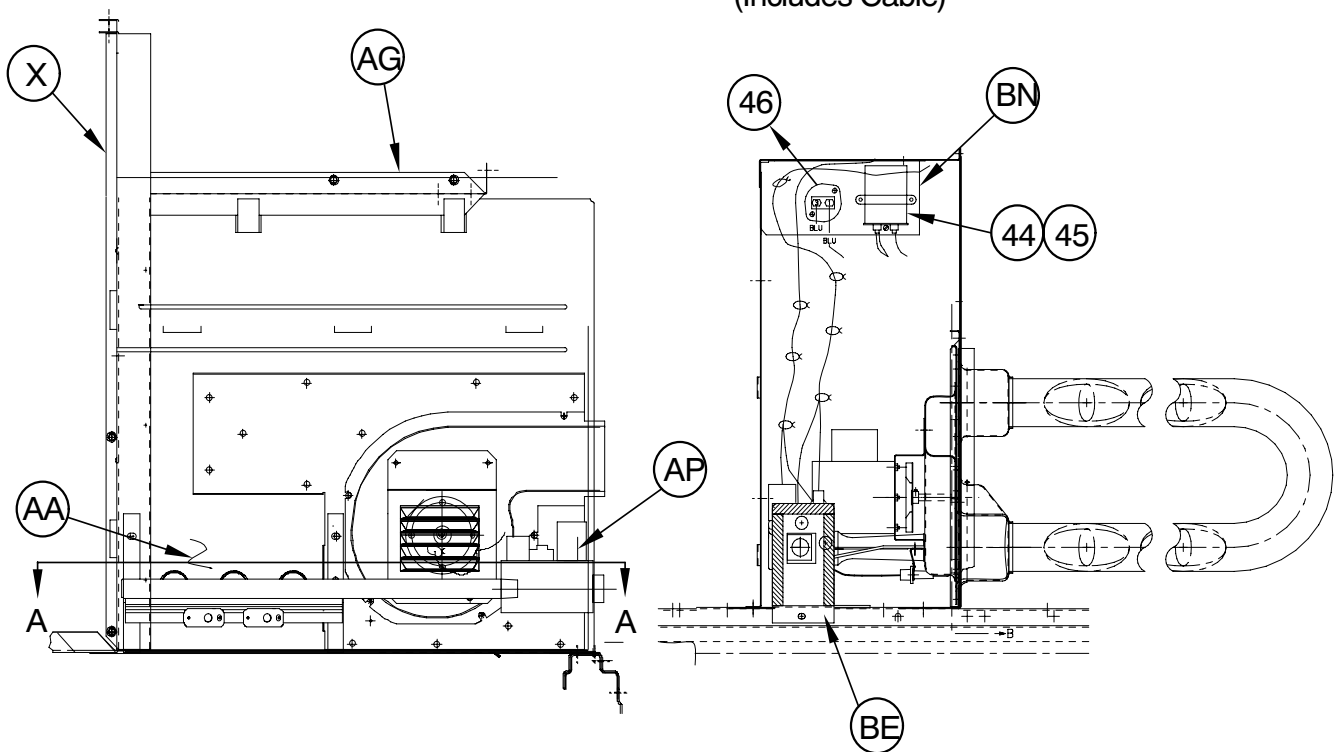
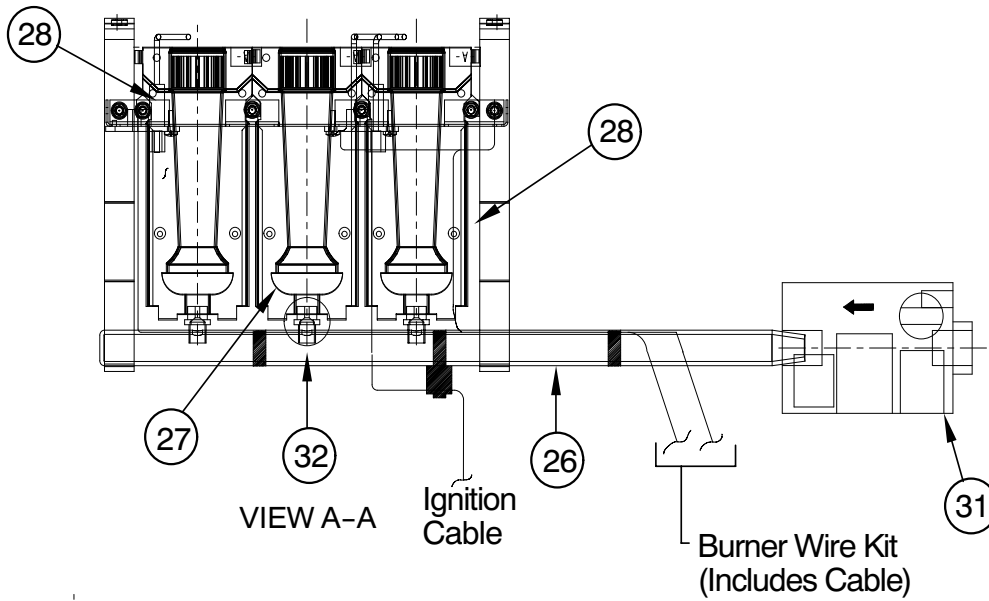
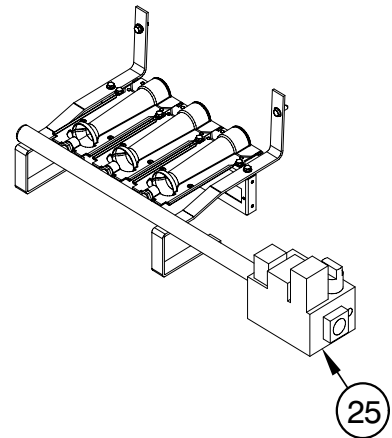
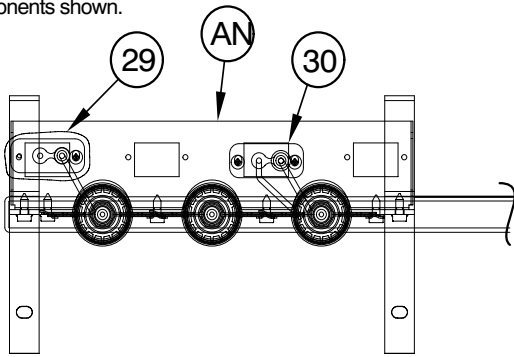
NOTE: This illustration is for reference only. Your unit may differ in appearance or may not include all components shown.



80-50-53

PGS072

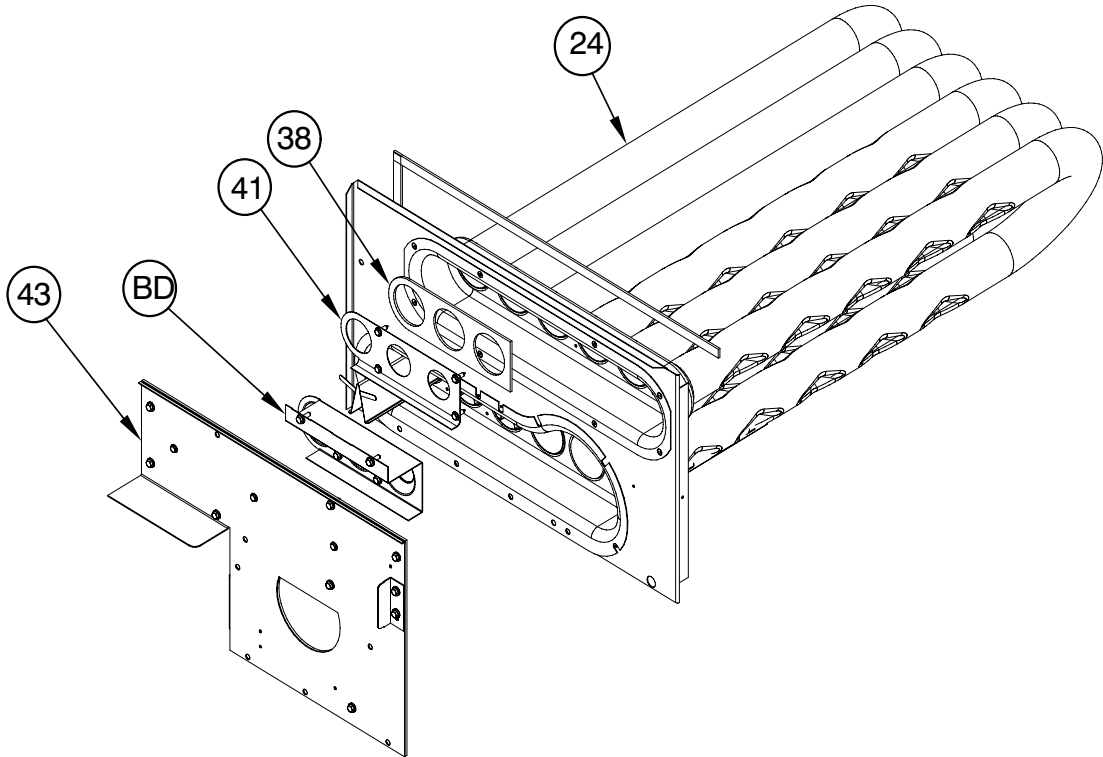
NOTE: This illustration is for reference only. Your unit may differ in appearance or may not include all components shown.



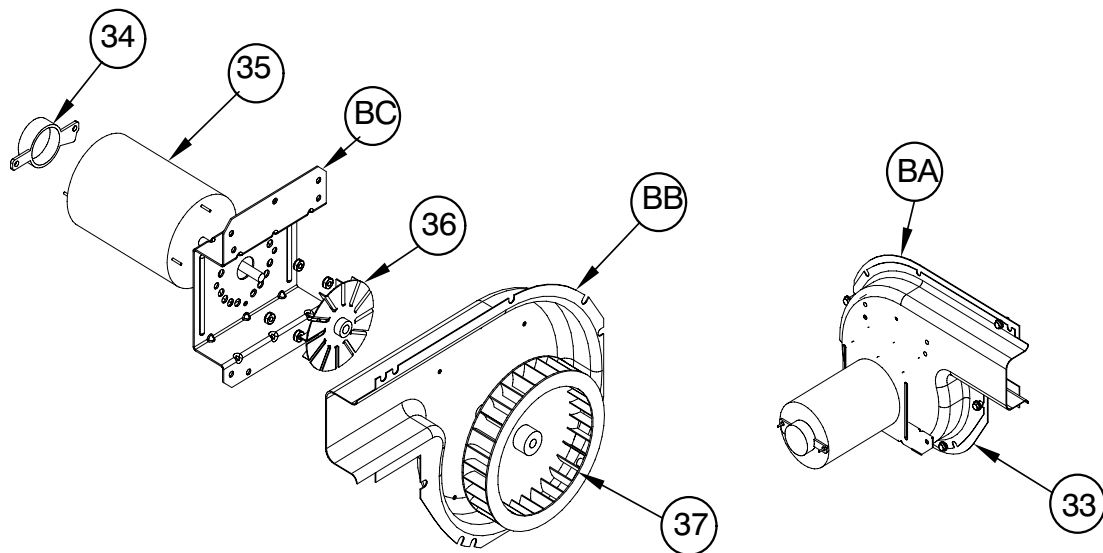
80-50-58

PGS072

NOTE: This illustration is for reference only. Your unit may differ in appearance or may not include all components shown.



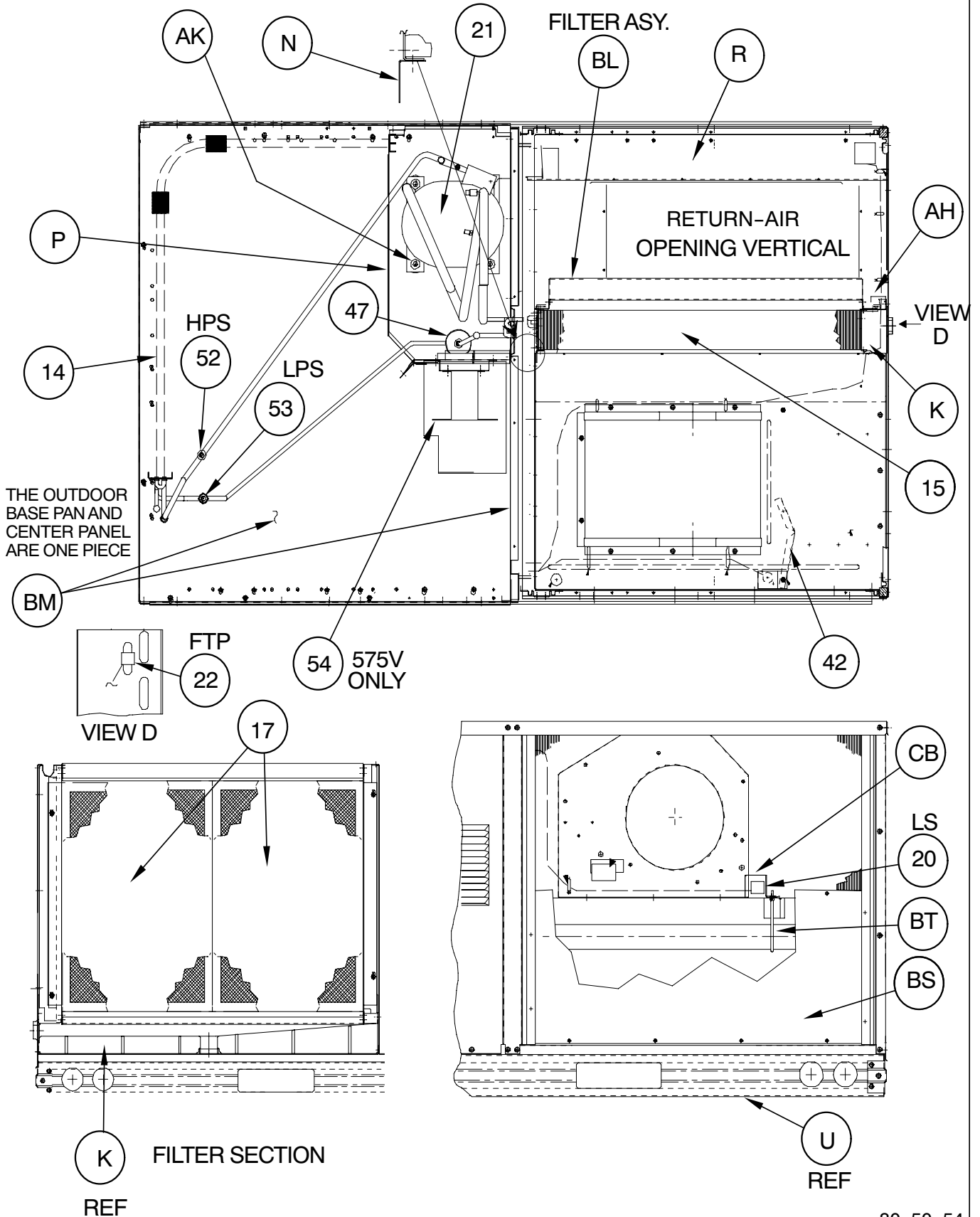
**HEAT EXCHANGER**



**INDUCED DRAFT MOTOR**

PGS072

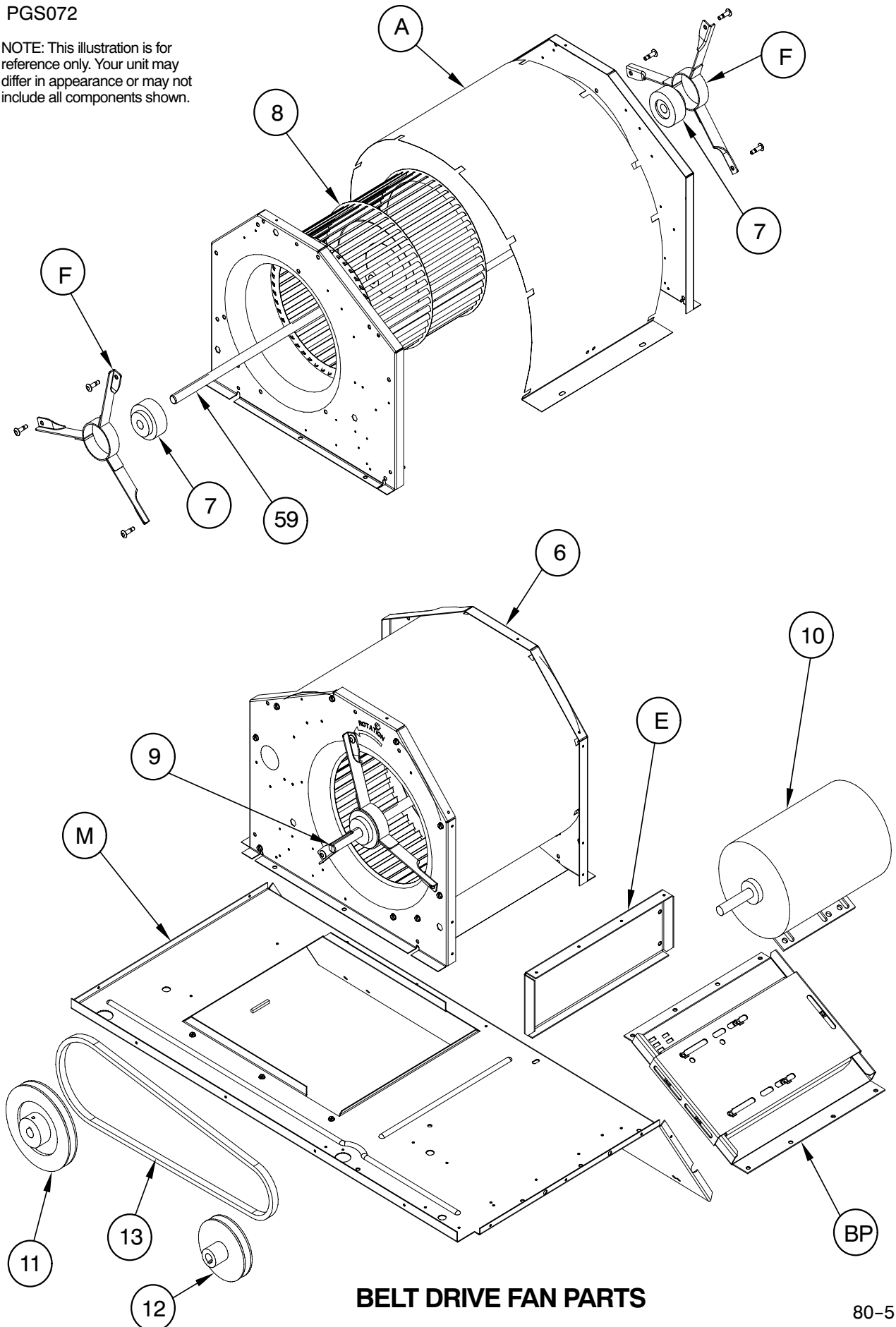
NOTE: This illustration is for reference only. Your unit may differ in appearance or may not include all components shown.



80-50-54

PGS072

NOTE: This illustration is for reference only. Your unit may differ in appearance or may not include all components shown.

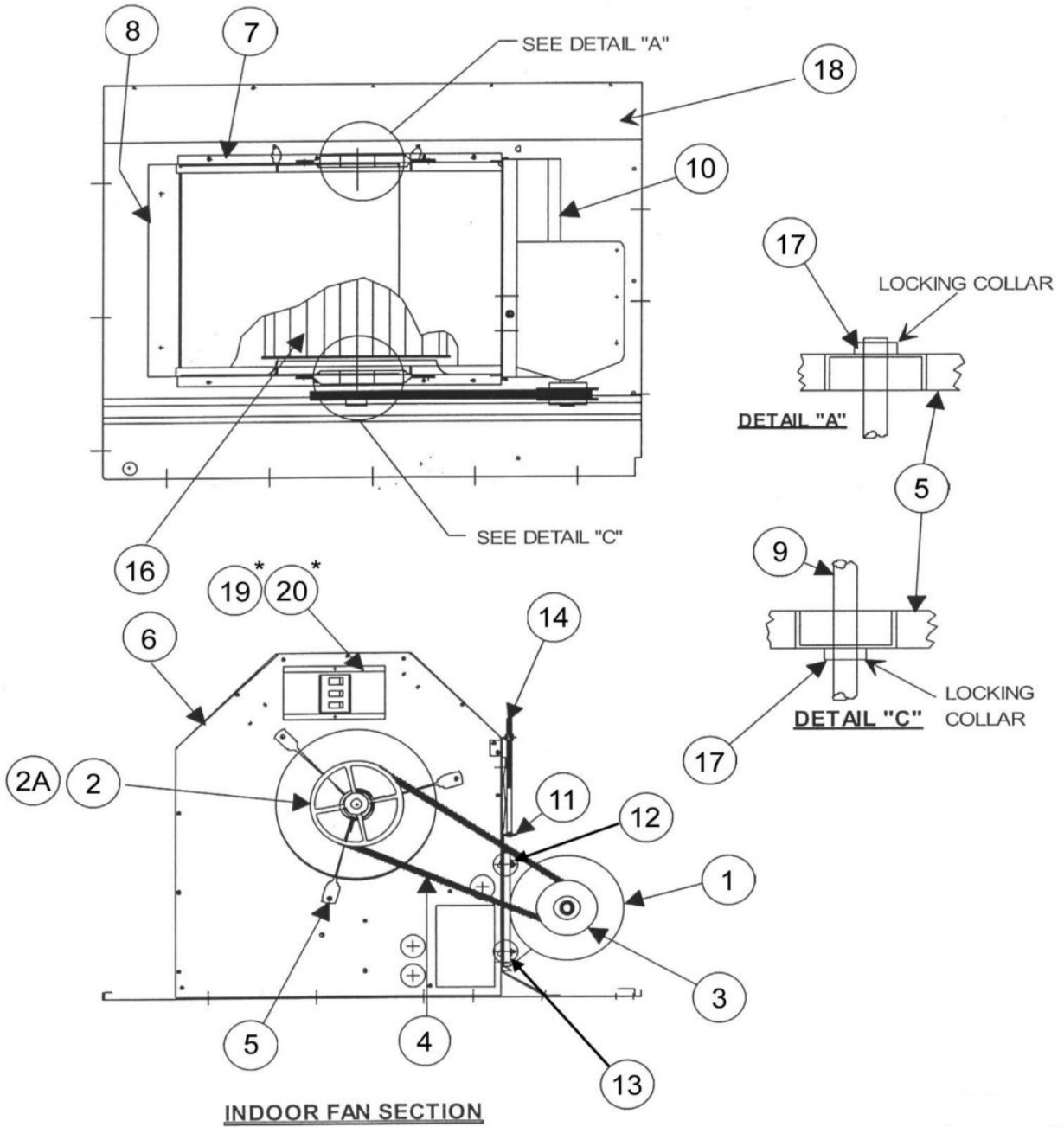


**BELT DRIVE FAN PARTS**

80-51-47

NOTE: This illustration is for reference only. Your unit may differ in appearance or may not include all components shown.

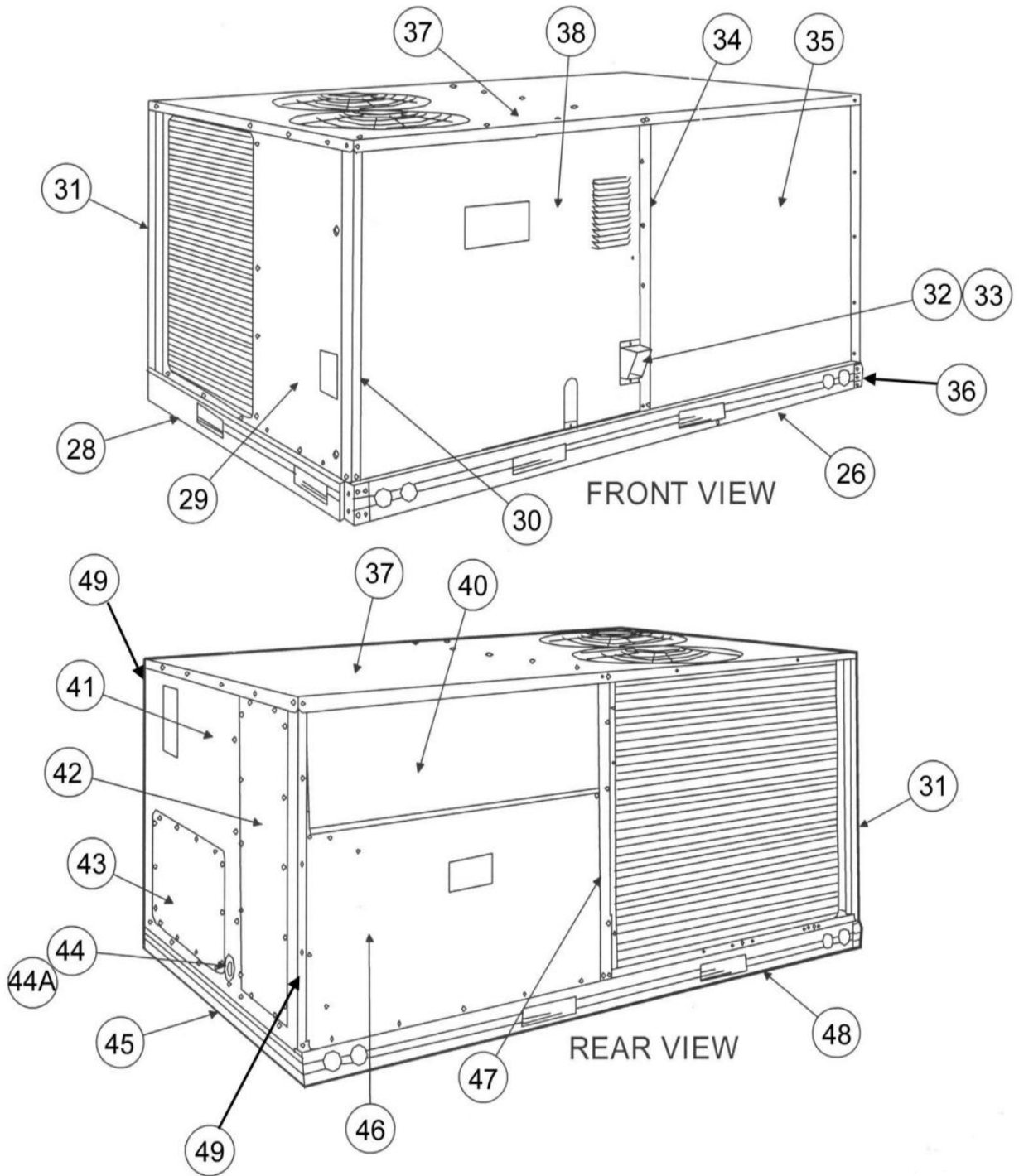
\*MAY NOT BE USED ON ALL UNITS





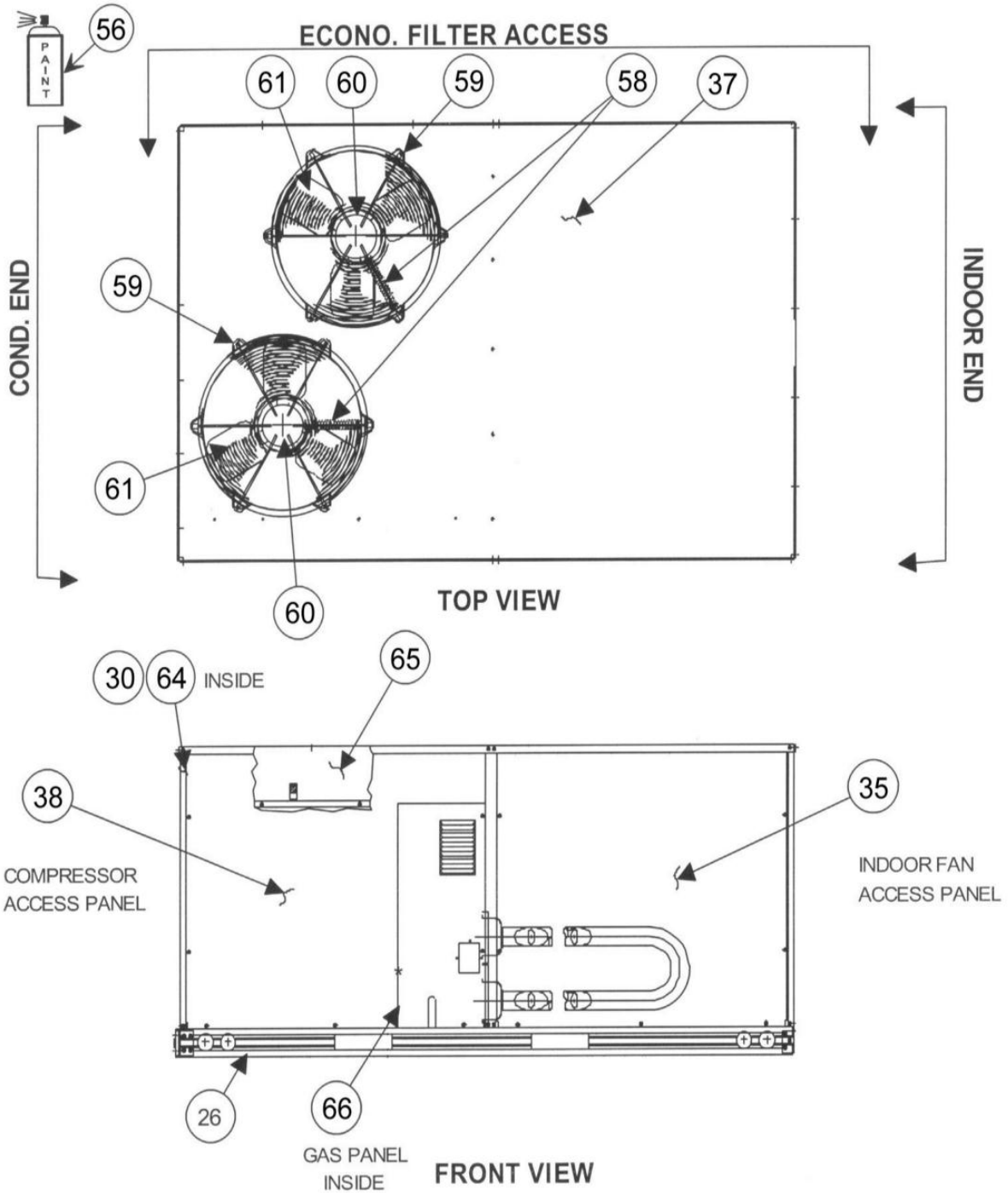
PGS090 - 150

NOTE: This illustration is for reference only. Your unit may differ in appearance or may not include all components shown.



PGS090 - 150

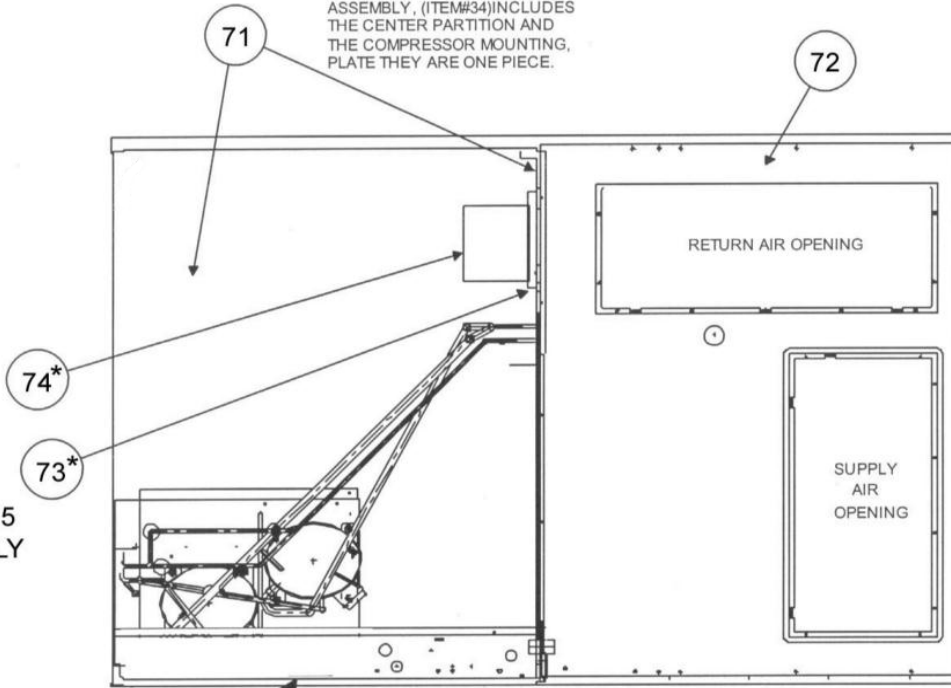
NOTE: This illustration is for reference only. Your unit may differ in appearance or may not include all components shown.



PGS090 - 150

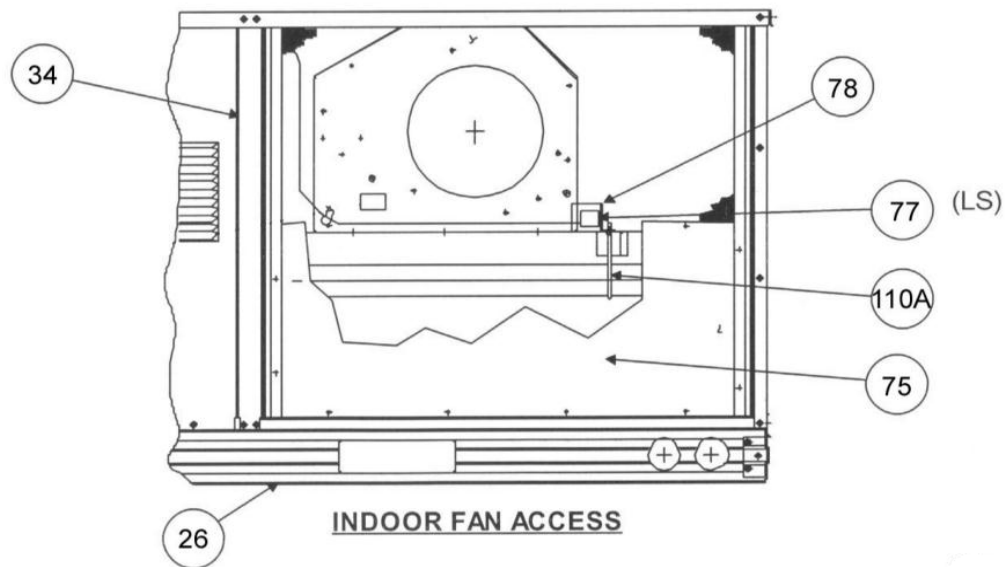
NOTE: This illustration is for reference only. Your unit may differ in appearance or may not include all components shown.

OUTDOOR BASE PAN ASSEMBLY, (ITEM#34) INCLUDES THE CENTER PARTITION AND THE COMPRESSOR MOUNTING PLATE THEY ARE ONE PIECE.



\*NOTE: 575 VOLT ONLY

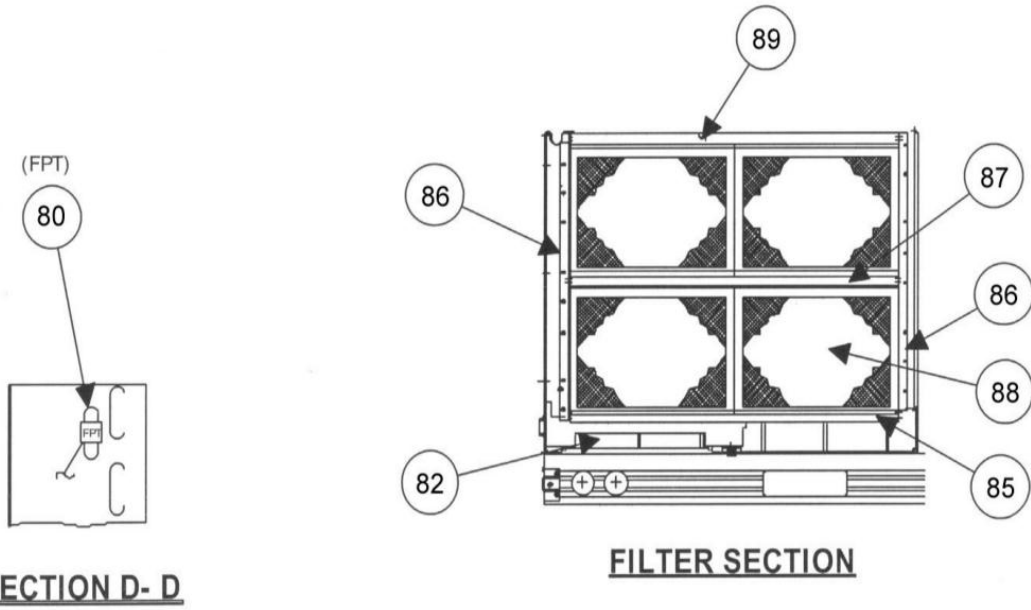
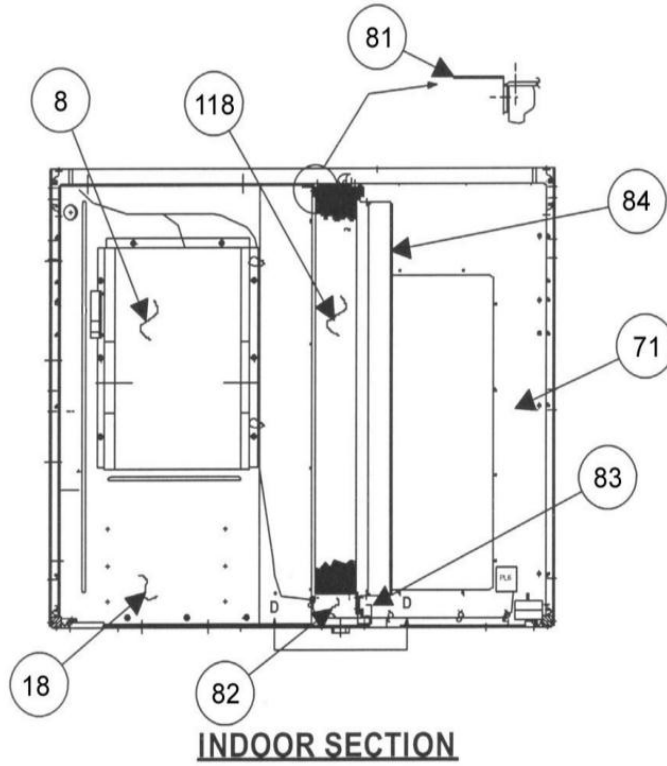
**OVERALL VIEW**



**INDOOR FAN ACCESS**

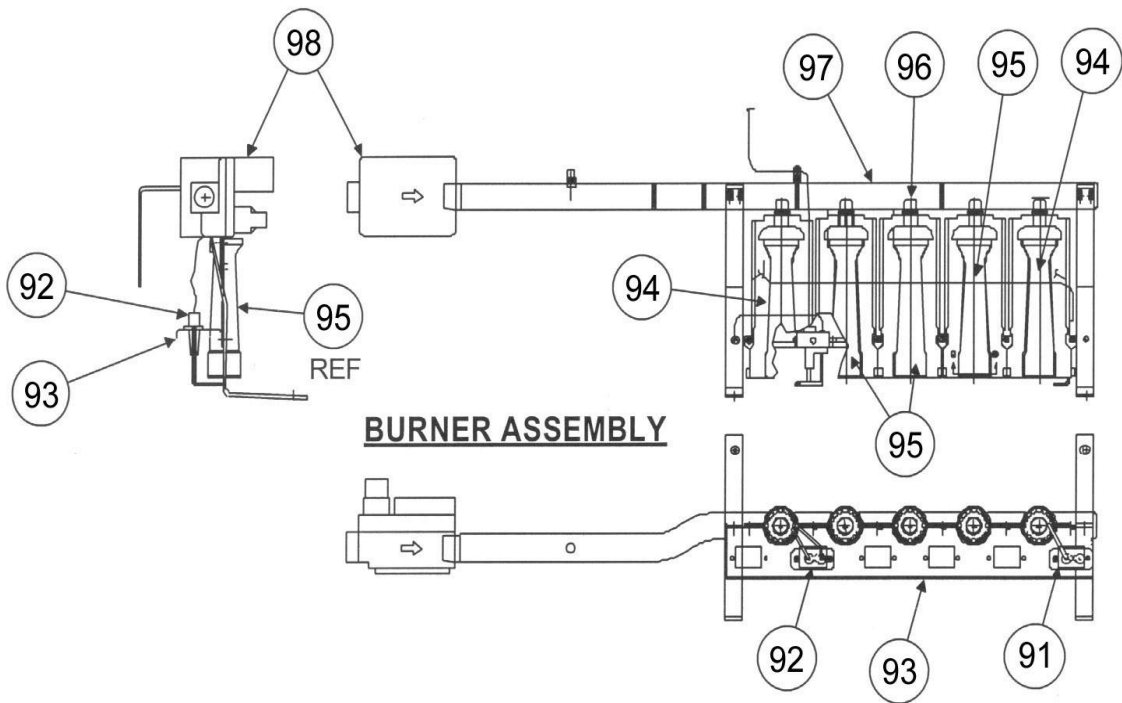
PGS090 - 150

NOTE: This illustration is for reference only. Your unit may differ in appearance or may not include all components shown.



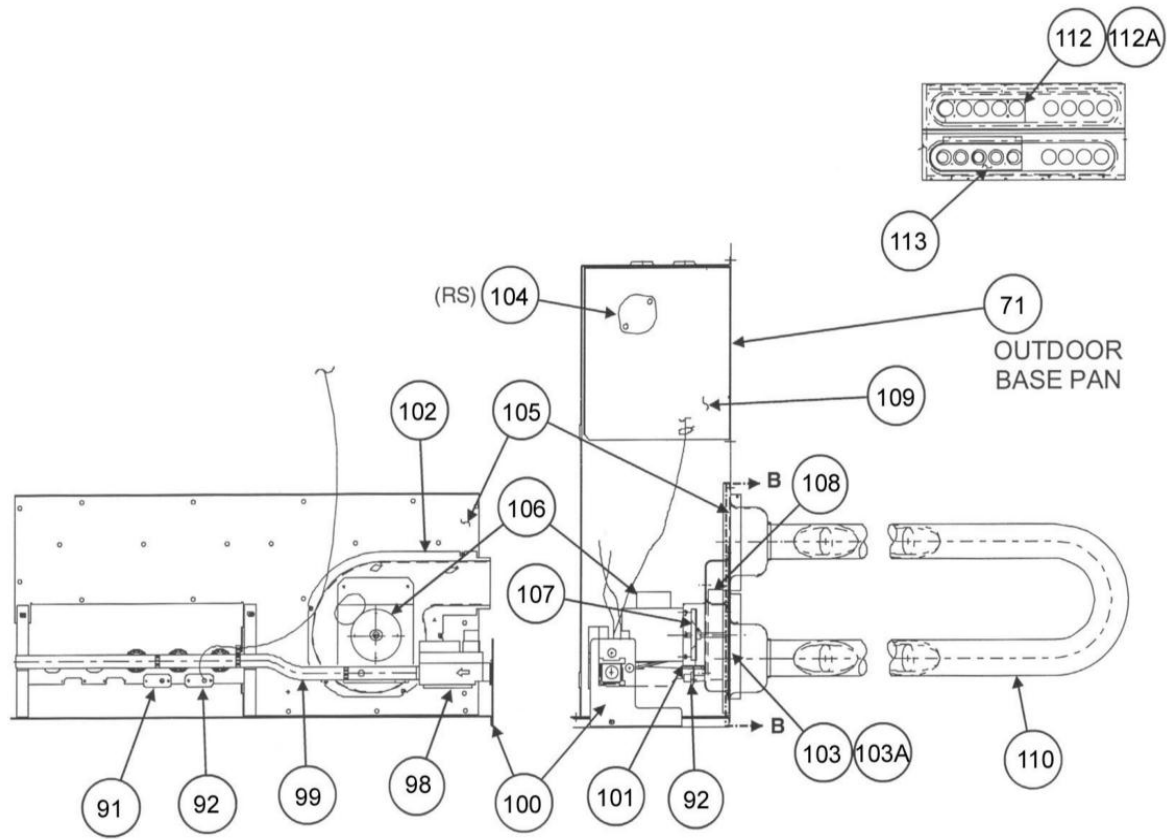
PGS090 - 150

NOTE: This illustration is for reference only. Your unit may differ in appearance or may not include all components shown.

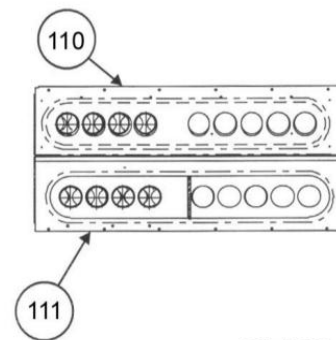


PGS090 - 150

NOTE: This illustration is for reference only. Your unit may differ in appearance or may not include all components shown.

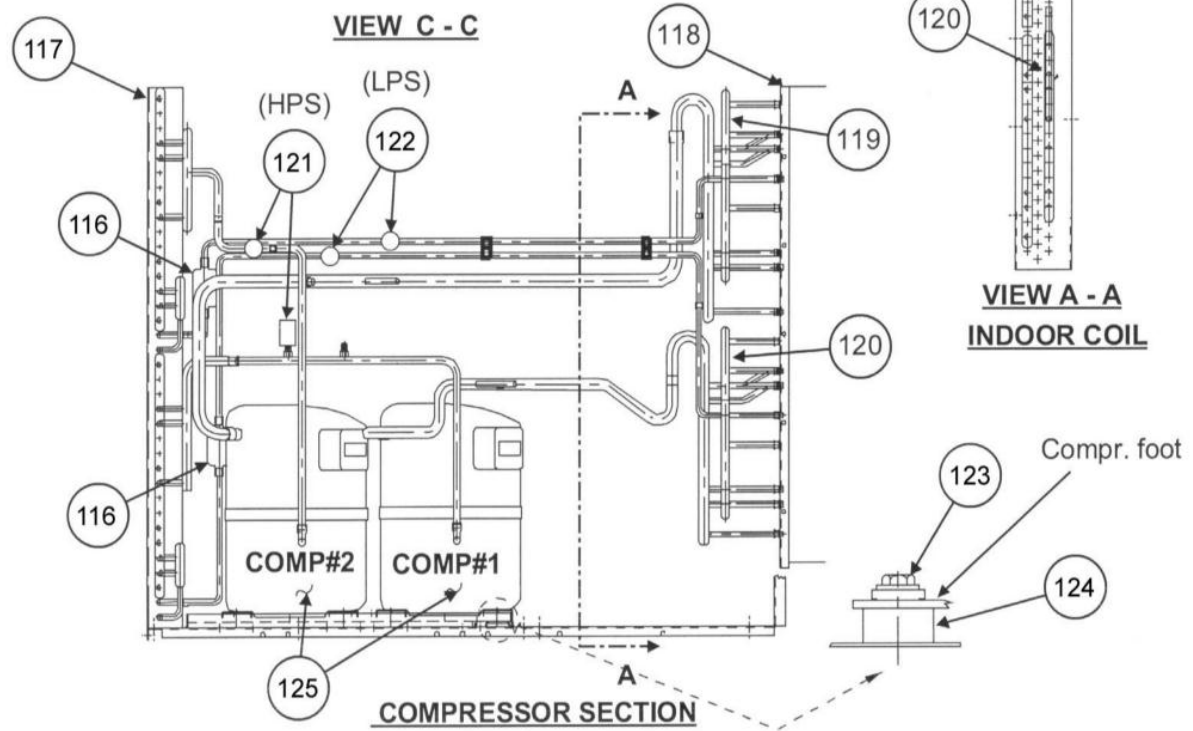
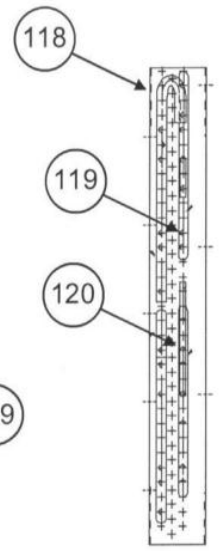
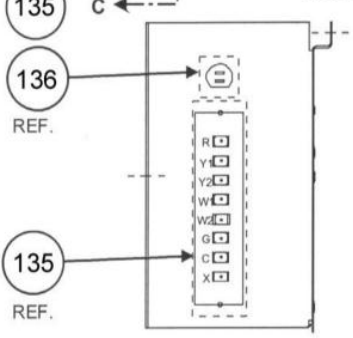
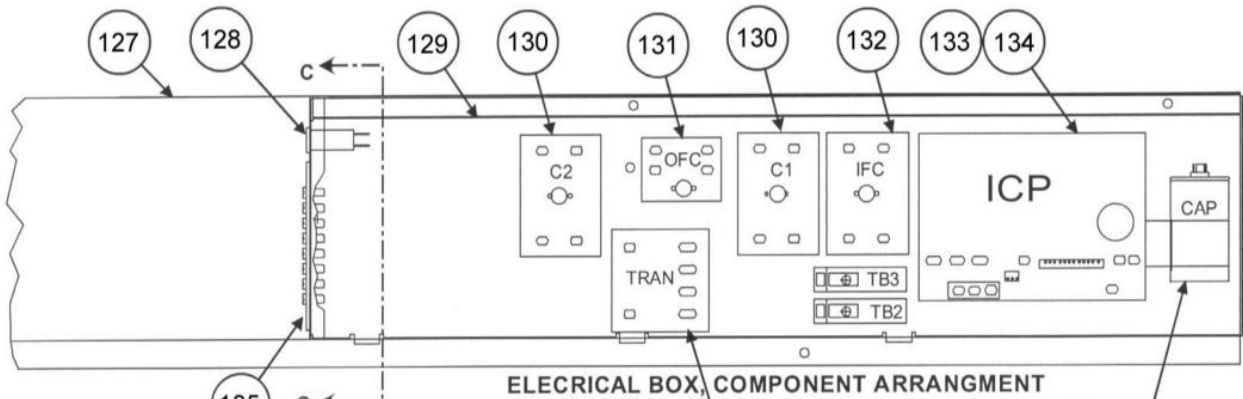


**HEAT EXCHANGER ASSEMBLY**



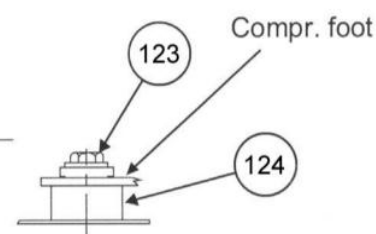
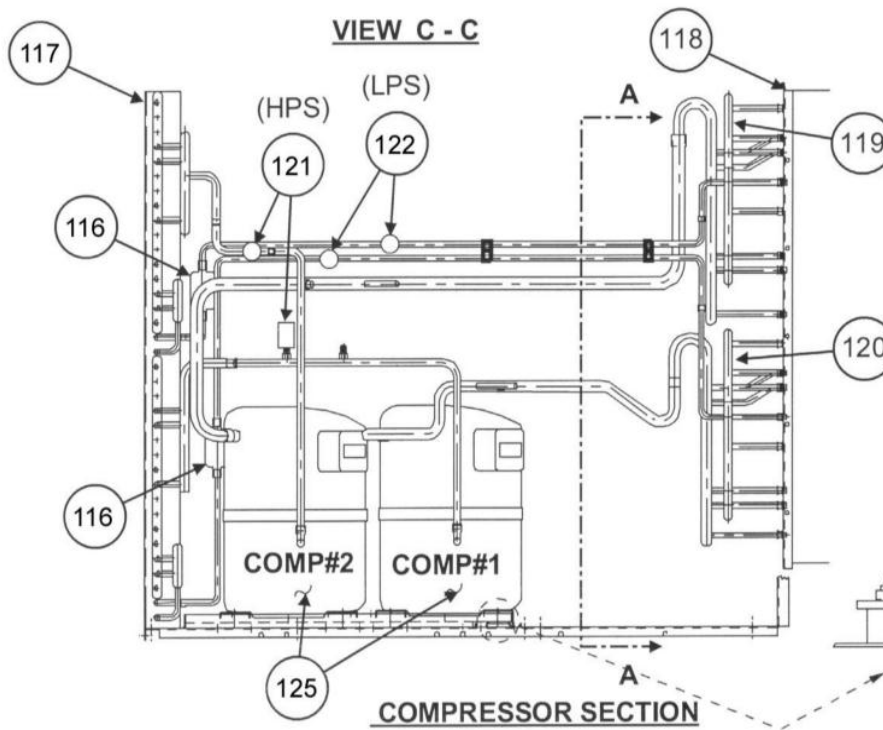
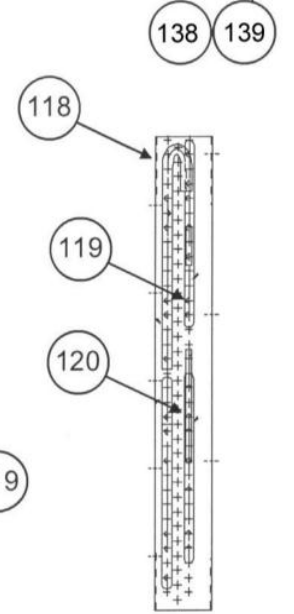
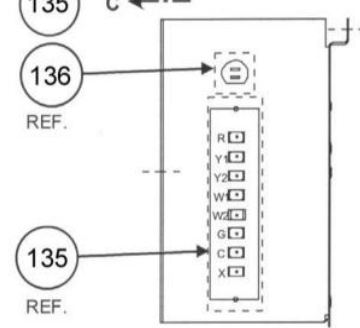
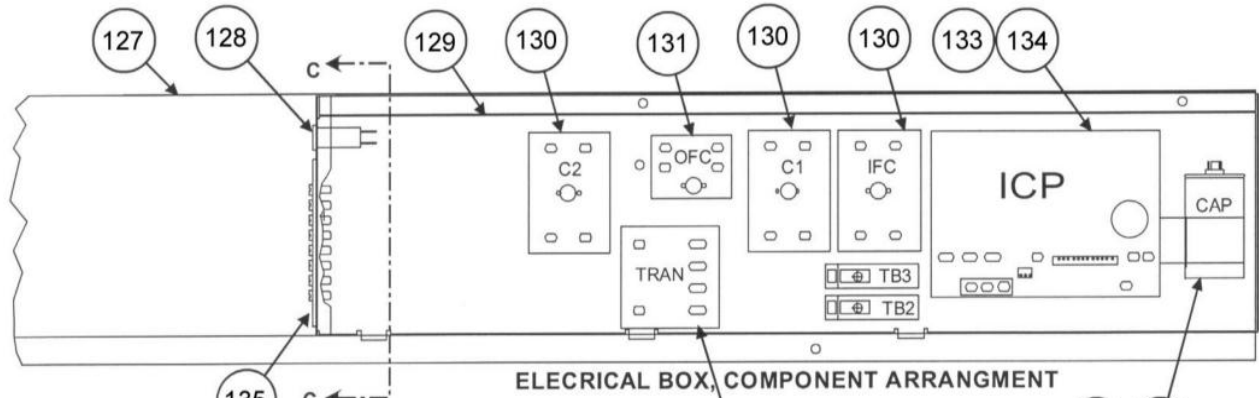
PGS090 - 120

NOTE: This illustration is for reference only. Your unit may differ in appearance or may not include all components shown.



PGS 150

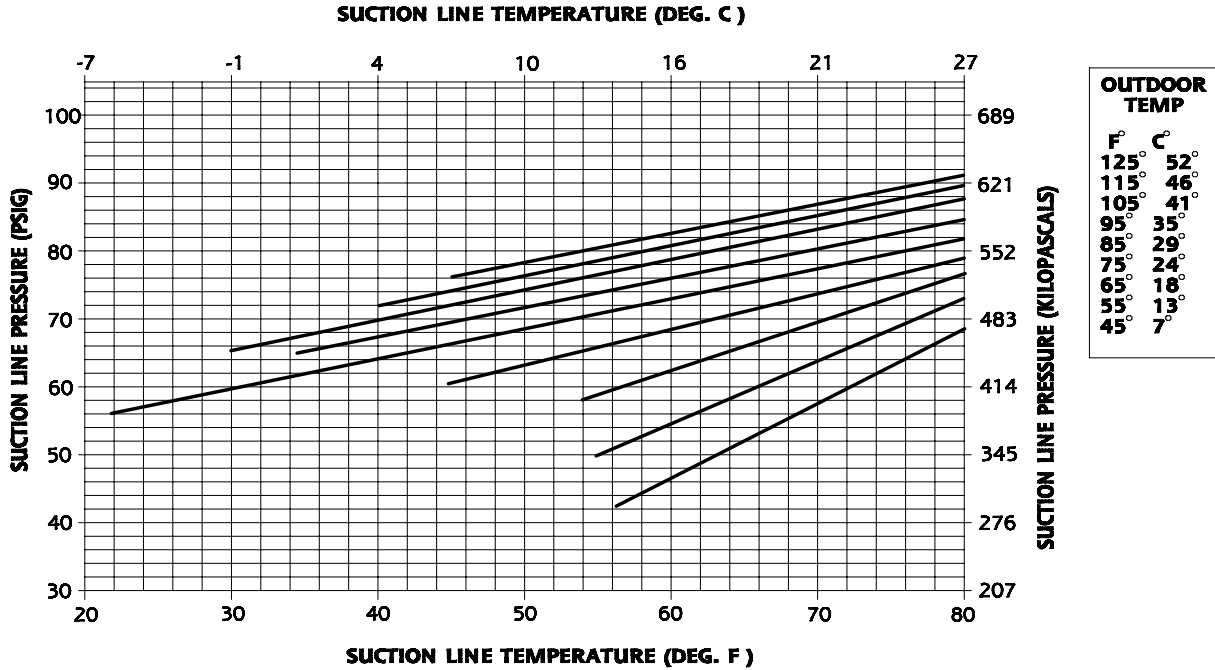
NOTE: This illustration is for reference only. Your unit may differ in appearance or may not include all components shown.





PGS072

### 6 TON UNIT (60 Hz) CHARGING CHART

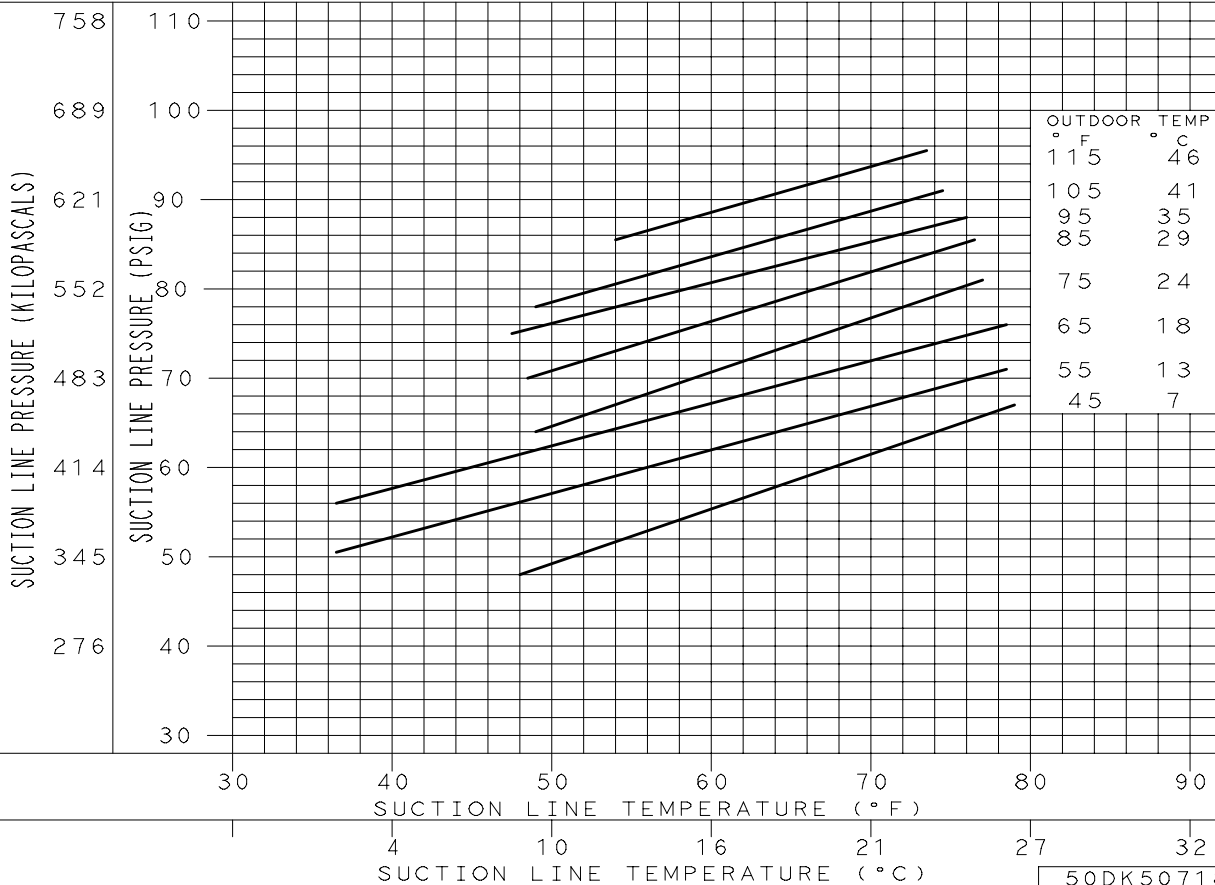


50DK508721 REV 2

PGS090

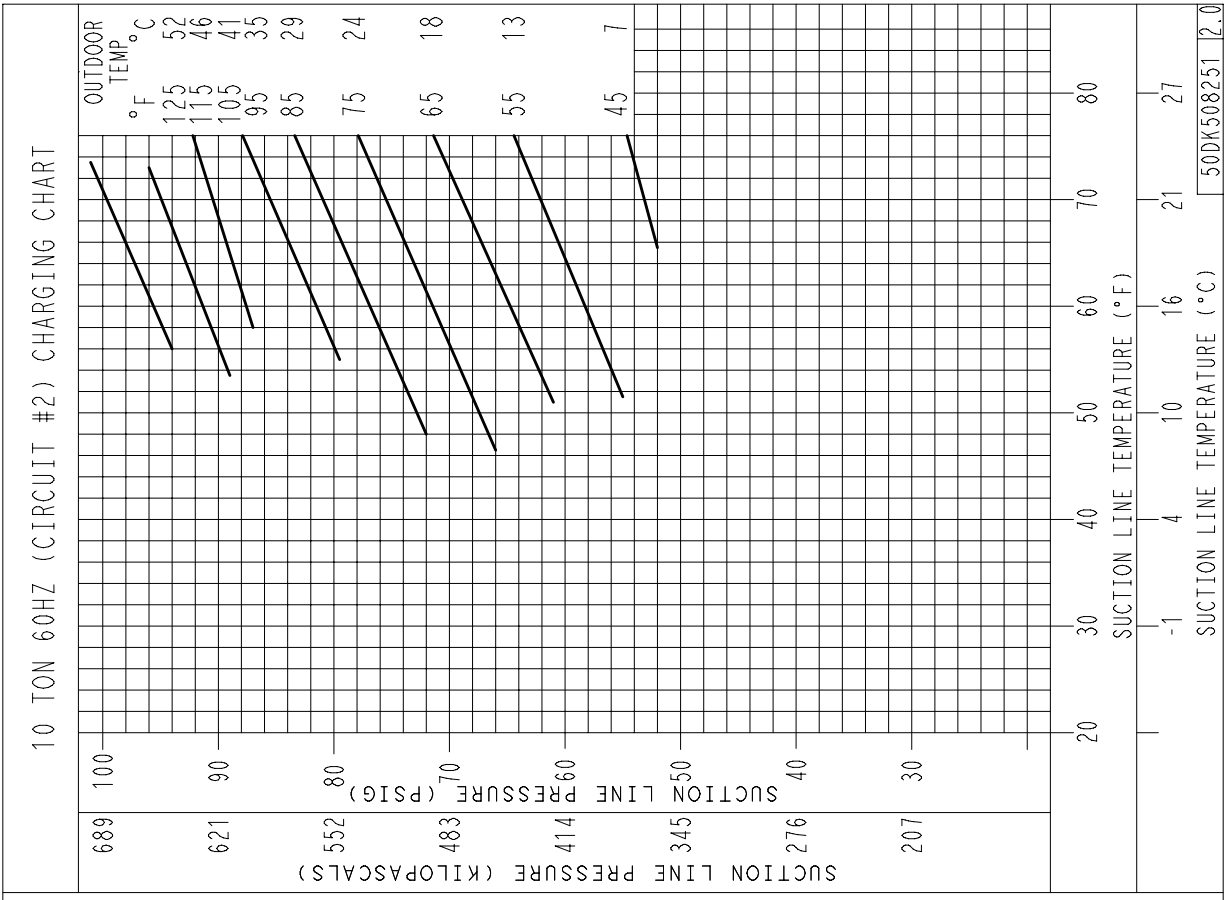
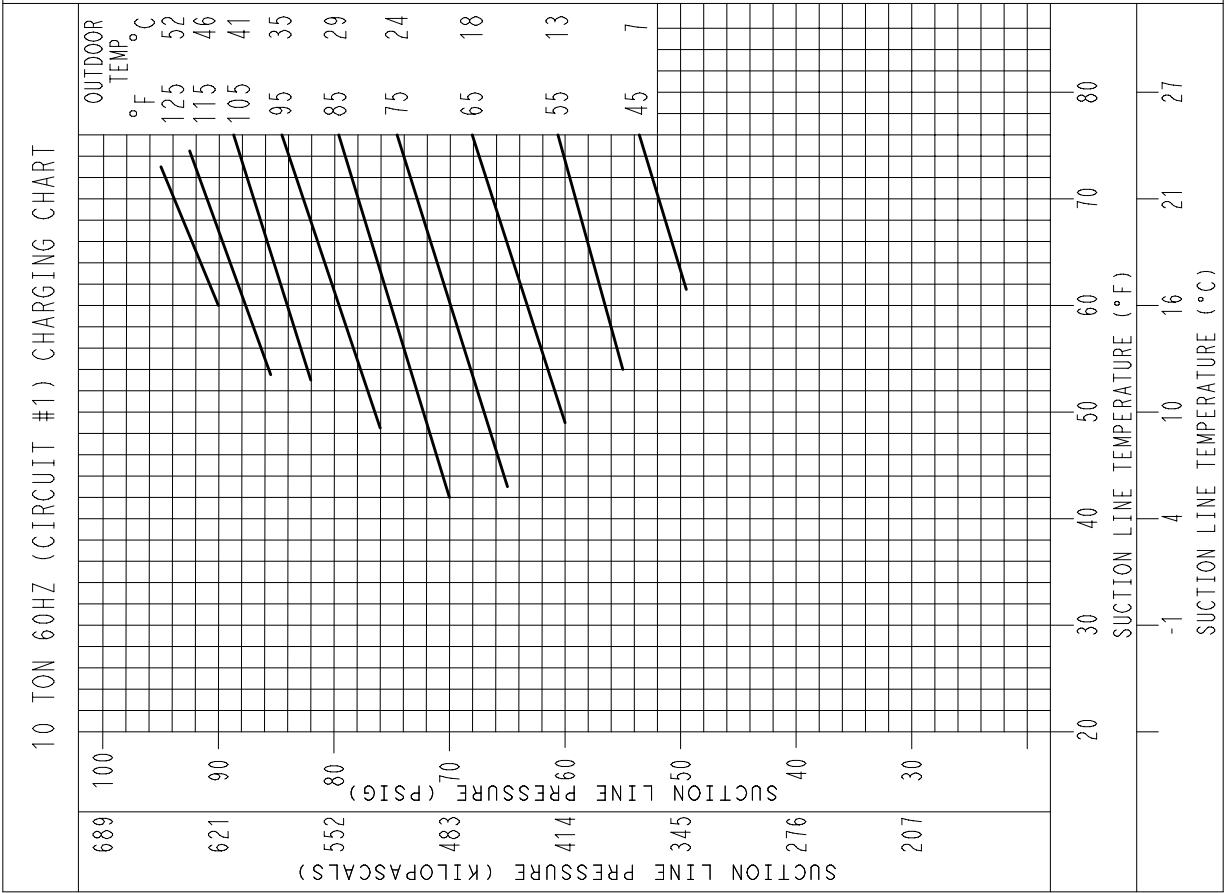
7.5 TON, CIRCUIT 1 AND 2, 60HZ

CHARGING CHART



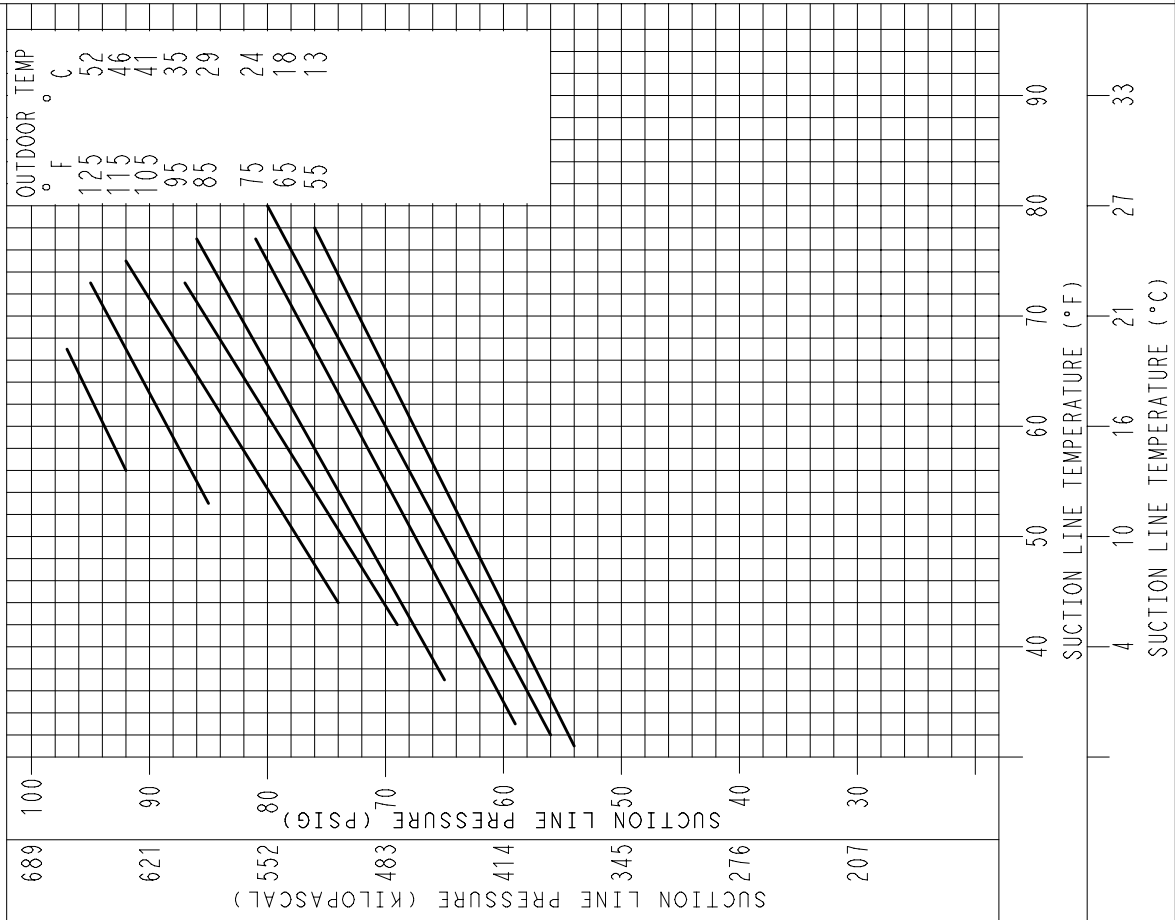
50DK507185 2.0

PGS120

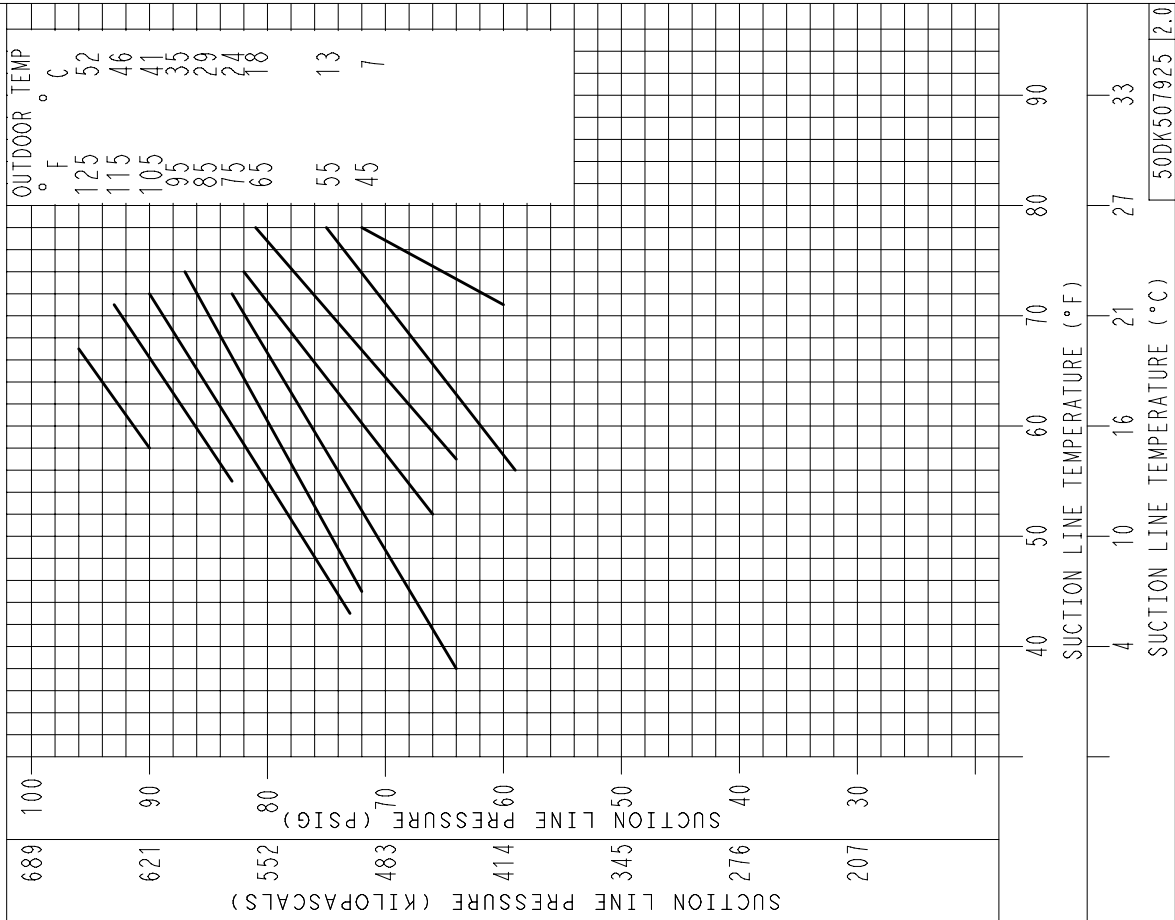


PGS150

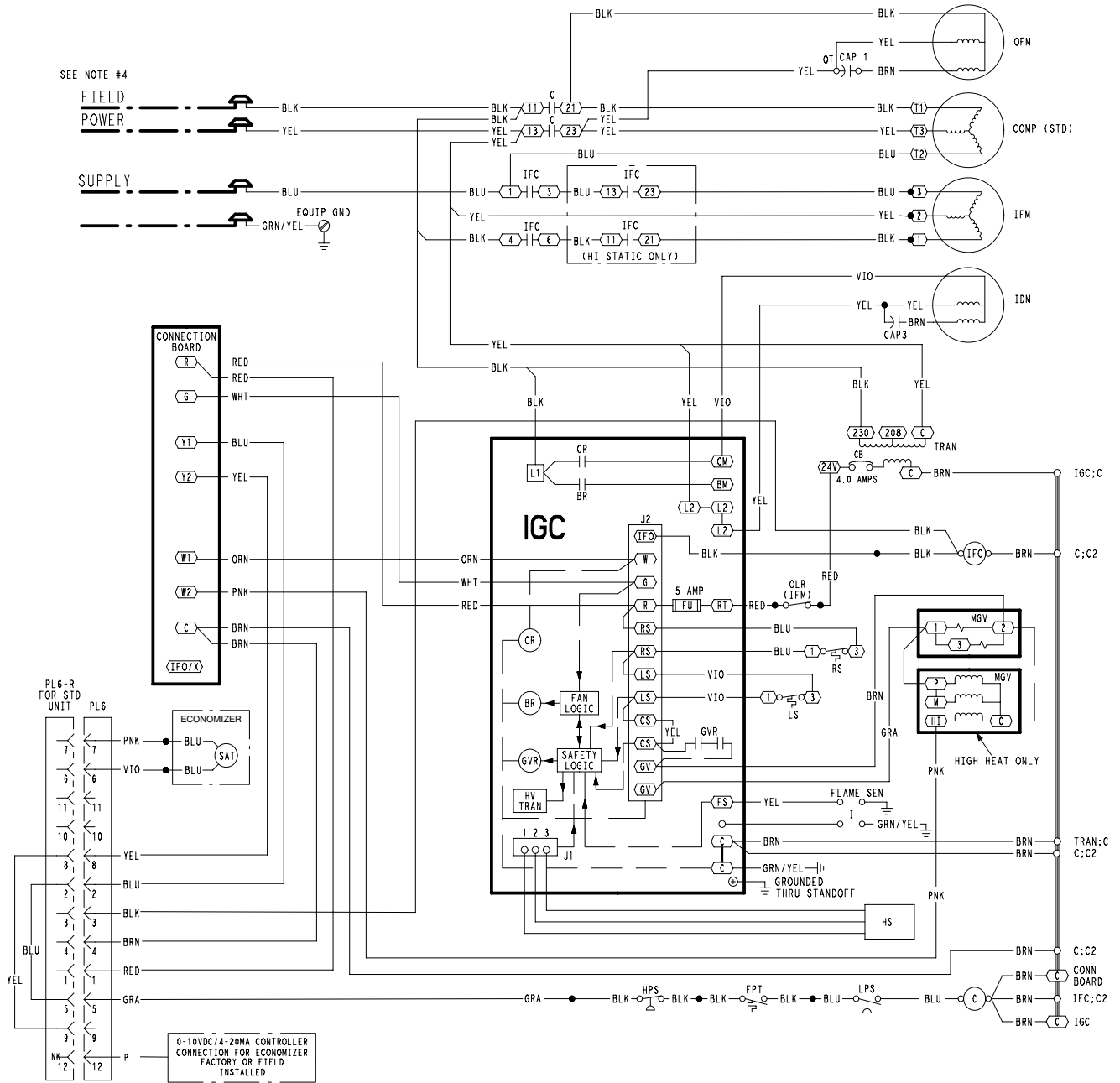
12.5 TON UNIT 60Hz (CIRCUIT #1) CHARGING CHART



12.5 TON UNIT 60Hz (CIRCUIT #2) CHARGING CHART

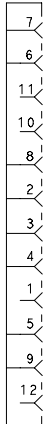


SCHEMATIC



# ECONOMIZER WIRING (FIELD CONNECTED)

PL6-R  
FOR ECON  
UNIT



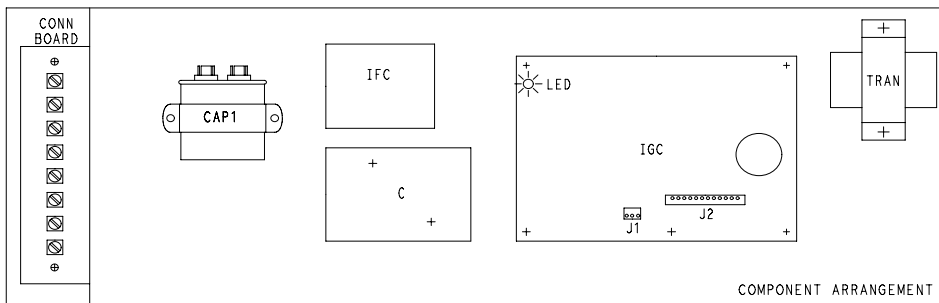
**NOTES**

1. IF ANY OF THE ORIGINAL WIRE FURNISHED MUST BE REPLACED. IT MUST BE REPLACED WITH TYPE 90 C WIRE OR ITS EQUIVALENT.
2. COMPRESSOR AND FAN MOTORS ARE THERMALLY PROTECTED. THREE PHASE MOTORS ARE PROTECTED AGAINST PRIMARY SINGLE PHASING CONDITIONS.
3. TRAN IS WIRED FOR 230V UNIT. IF UNIT IS TO BE RUN WITH 208V POWER SUPPLY DISCONNECT BLK WIRE FROM 230V TAP (ORN) AND CONNECT TO 208V TAP (RED). INSULATE END OF 230V WIRE.
4. USE COPPER CONDUCTORS ONLY.

- C CONTACTOR, COMPRESSOR
- CAP CAPACITOR
- CLO COMPRESSOR LOCKOUT
- COMP COMPRESSOR MOTOR
- EQUIP EQUIPMENT
- FPT FREEZE UP PROTECTION THERMOSTAT
- FSS FILTER STATUS SWITCH
- FU FUSE
- GND GROUND
- HPS HIGH PRESSURE SWITCH
- HS HALL EFFECT SENSOR
- I IGNITOR
- IAQ INDOOR AIR QUALITY SENSOR
- IARH INDOOR AIR RELATIVE HUMIDITY SEN.
- IDM INDUCED DRAFT MOTOR
- IFM INDOOR FAN MOTOR
- IGC INTEGRATED GAS UNIT CONTROLLER
- LA LOW AMBIENT LOCKOUT
- LPS LOW PRESSURE SWITCH
- LS LIMIT SWITCH
- MGV MAIN GAS VALVE
- OARH OUTDOOR AIR RELATIVE HUMIDITY SEN.
- OAT OUTDOOR AIR TEMP. SEN.
- OFM OUTDOOR FAN MOTOR
- OLR OVERLOAD RELAY
- P PLUG
- PL PLUG ASSEMBLY
- POT POTENTIOMETER
- QT QUADRUPLE TERMINAL
- RAT RETURN AIR TEMP. SEN.
- RS ROLLOUT SWITCH
- SAT SUPPLY AIR TEMP. SEN.
- TRAN TRANSFORMER

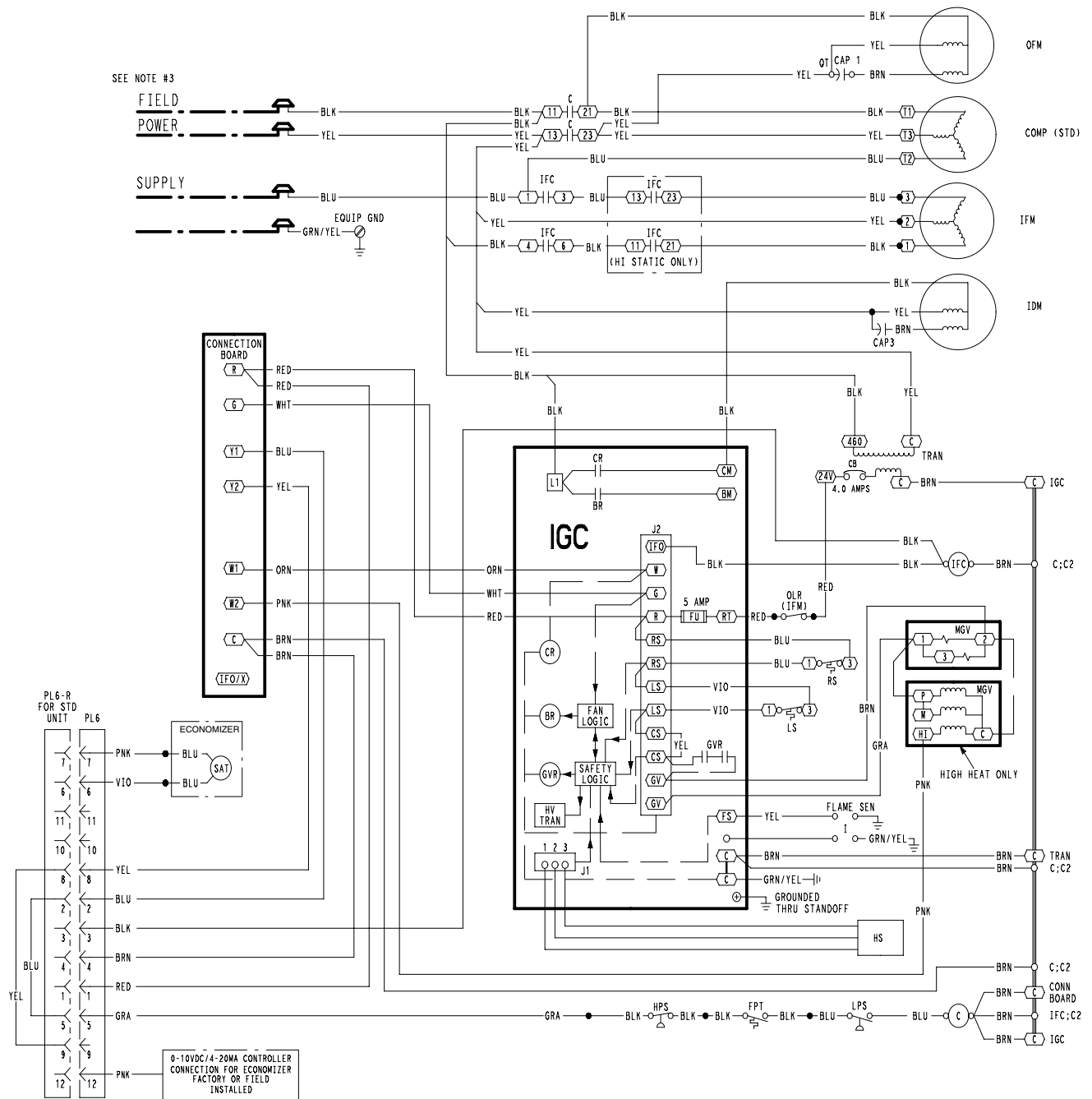
**LEGEND**

- FIELD SPLICE
- MARKED WIRE
- TERMINAL (MARKED)
- TERMINAL (UNMARKED)
- TERMINAL BLOCK
- SPLICE
- SPLICE (MARKED)
- FACTORY WIRING
- FIELD CONTROL WIRING
- FIELD POWER WIRING
- ACCESSORY OR OPTIONAL WIRING
- TO INDICATE COMMON POTENTIAL ONLY:  
NOT TO REPRESENT WIRING



50DK509543 4.0

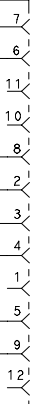
SCHEMATIC



50DK509544 | 4.0

# ECONOMIZER WIRING (FIELD CONNECTED)

PL 6-R  
FOR ECON  
UNIT



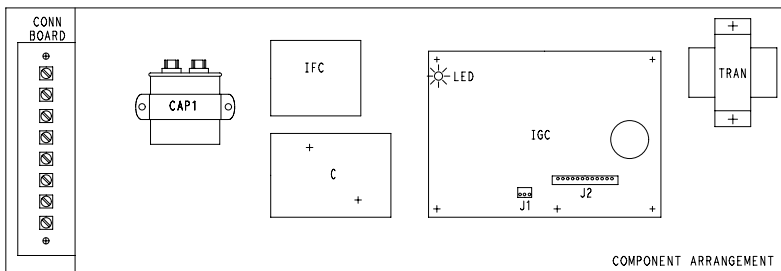
NOTES

1. IF ANY OF THE ORIGINAL WIRE FURNISHED MUST BE REPLACED. IT MUST BE REPLACED WITH TYPE 90 C WIRE OR ITS EQUIVALENT.
2. COMPRESSOR AND FAN MOTORS ARE THERMALLY PROTECTED. THREE PHASE MOTORS ARE PROTECTED AGAINST PRIMARY SINGLE PHASING CONDITIONS.
3. USE COPPER CONDUCTORS ONLY.

C	CONTACTOR, COMPRESSOR
CAP	CAPACITOR
CLO	COMPRESSOR LOCKOUT
COMP	COMPRESSOR MOTOR
EQUIP	EQUIPMENT
FPT	FREEZE UP PROTECTION THERMOSTAT
FSS	FILTER STATUS SWITCH
FU	FUSE
GND	GROUND
HPS	HIGH PRESSURE SWITCH
HS	HALL EFFECT SENSOR
I	IGNITOR
IAQ	INDOOR AIR QUALITY SENSOR
IARH	INDOOR AIR RELATIVE HUMIDITY SEN.
IDM	INDUCED DRAFT MOTOR
IFM	INDOOR FAN MOTOR
IGC	INTEGRATED GAS UNIT CONTROLLER
LA	LOW AMBIENT LOCKOUT
LPS	LOW PRESSURE SWITCH
LS	LIMIT SWITCH
MGV	MAIN GAS VALVE
OARH	OUTDOOR AIR RELATIVE HUMIDITY SEN.
OAT	OUTDOOR AIR TEMP. SEN.
OFM	OUTDOOR FAN MOTOR
OLR	OVERLOAD RELAY
P	PLUG
PL	PLUG ASSEMBLY
POT	POTENTIOMETER
QT	QUADRUPLE TERMINAL
RAT	RETURN AIR TEMP. SEN.
RS	ROLLOUT SWITCH
SAT	SUPPLY AIR TEMP. SEN.
TRAN	TRANSFORMER

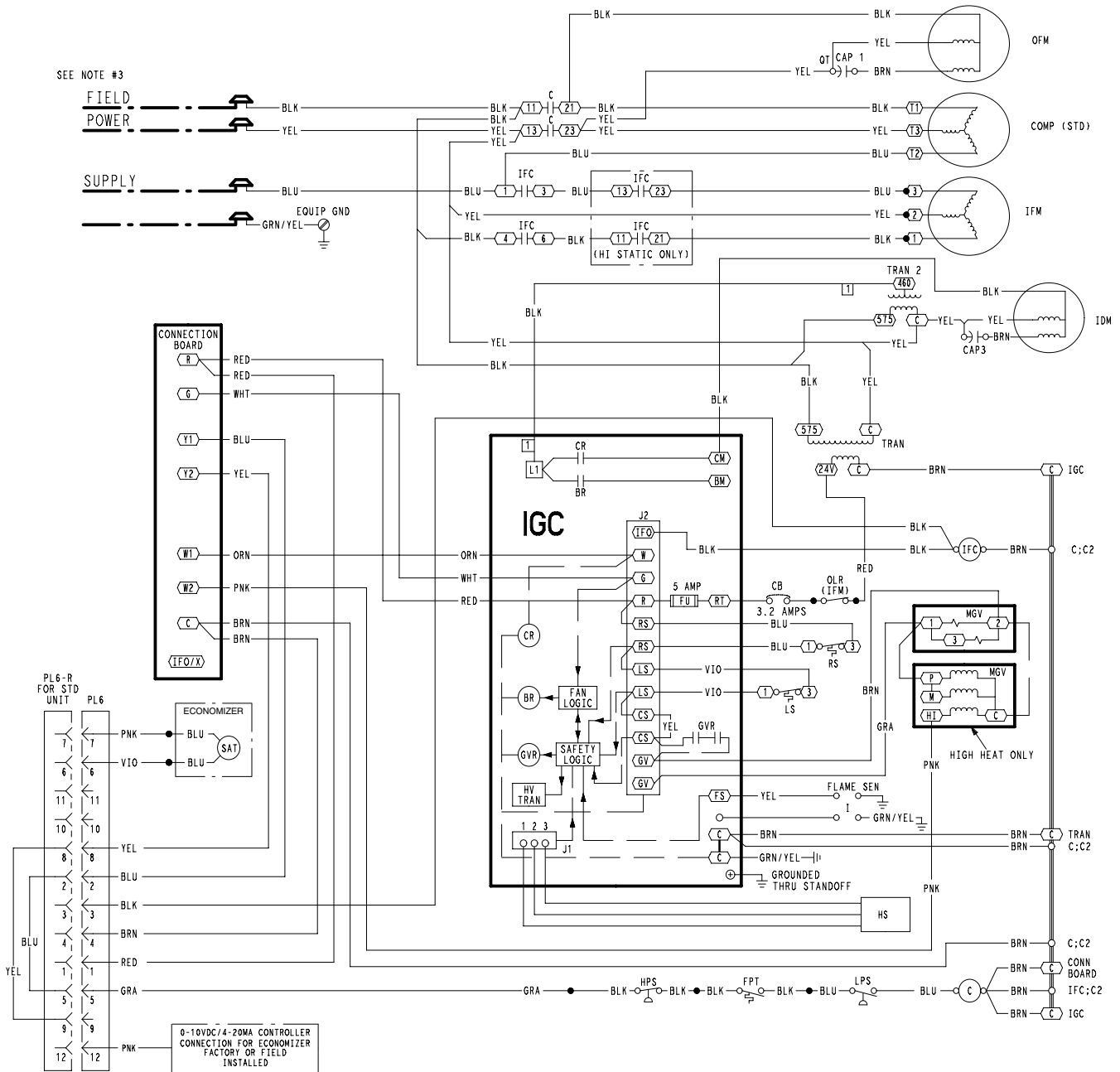
LEGEND

	FIELD SPLICE
	MARKED WIRE
	TERMINAL (MARKED)
	TERMINAL (UNMARKED)
	TERMINAL BLOCK
	SPLICE
	SPLICE (MARKED)
	FACTORY WIRING
	FIELD CONTROL WIRING
	FIELD POWER WIRING
	ACCESSORY OR OPTIONAL WIRING
	TO INDICATE COMMON POTENTIAL ONLY:
	NOT TO REPRESENT WIRING



50DK509544 4.0

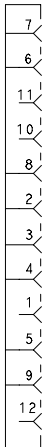
SCHEMATIC





# ECONOMIZER WIRING (FIELD CONNECTED)

PL6-R  
FOR ECON  
UNIT



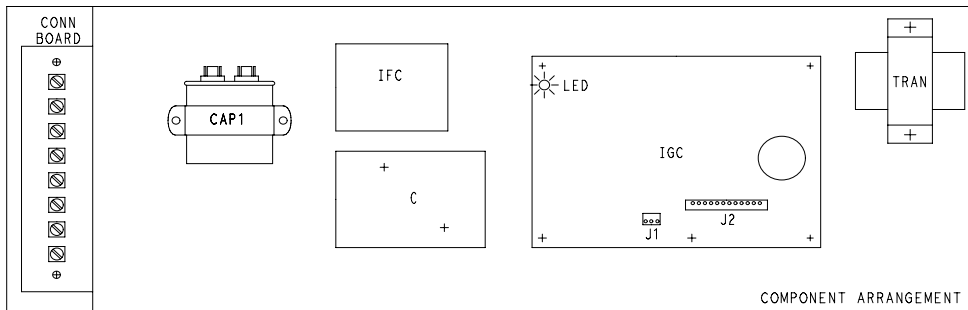
- NOTES**
1. IF ANY OF THE ORIGINAL WIRE FURNISHED MUST BE REPLACED. IT MUST BE REPLACED WITH TYPE 90 C WIRE OR ITS EQUIVALENT.
  2. COMPRESSOR AND FAN MOTORS ARE THERMALLY PROTECTED. THREE PHASE MOTORS ARE PROTECTED AGAINST PRIMARY SINGLE PHASING CONDITIONS.
  3. USE COPPER CONDUCTOR ONLY.

CIRCUIT BREAKER	VOLTS	MFG. PT. NO.	MUST TRIP AMPS
CB	24V	POTTER & BRUMFIELD W28-X1075-3.2	3.2

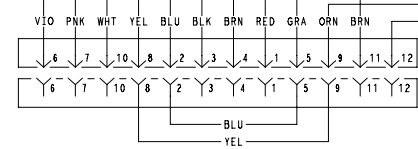
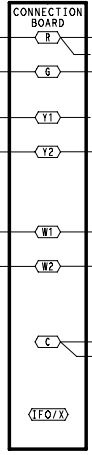
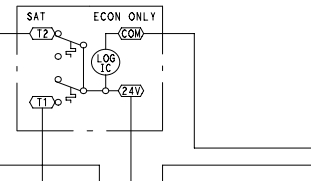
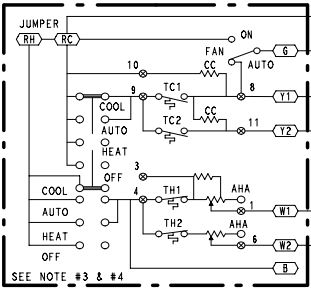
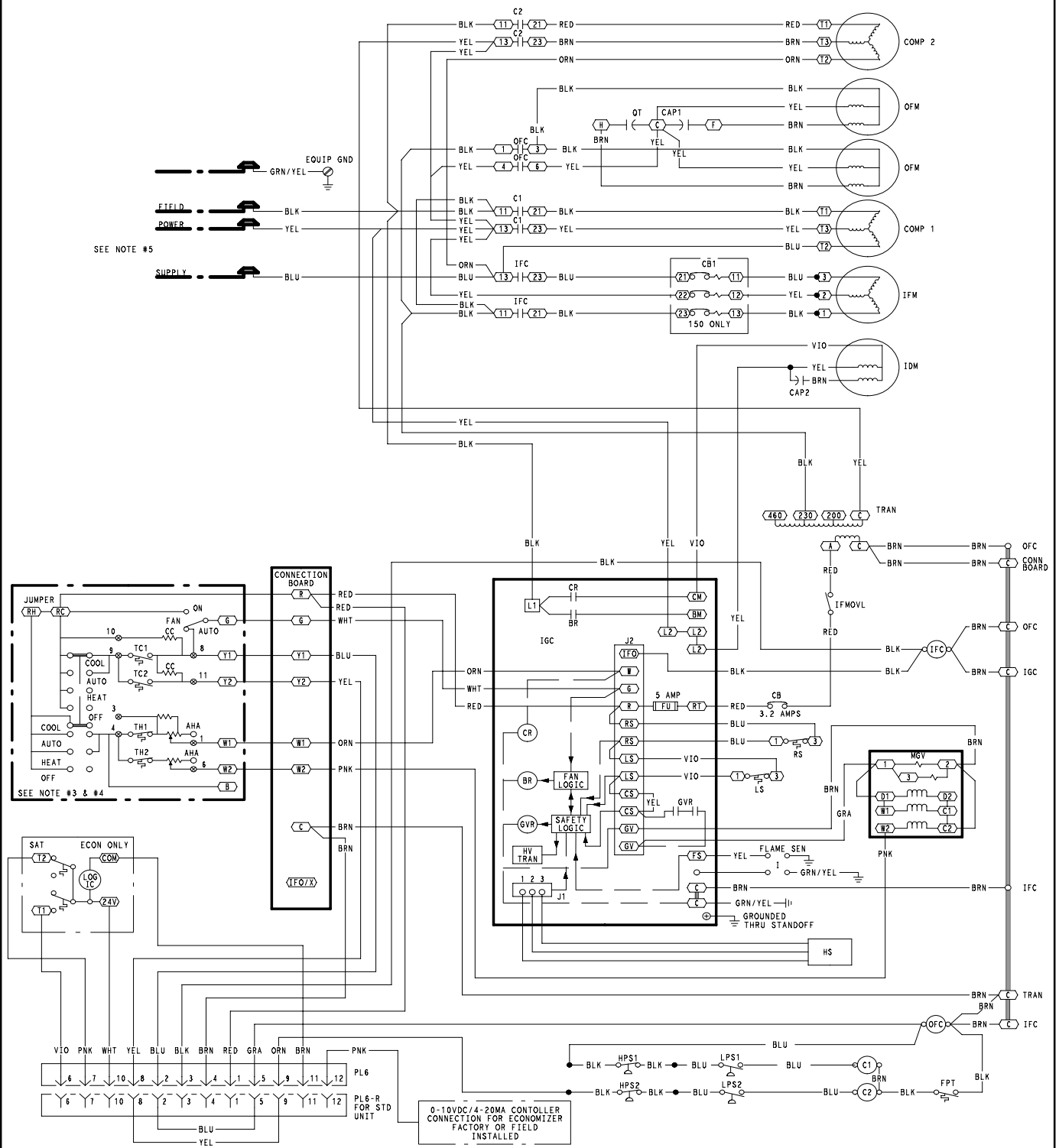
- C CONTACTOR, COMPRESSOR
- CAP CAPACITOR
- CLO COMPRESSOR LOCKOUT
- COMP COMPRESSOR MOTOR
- EQUIP EQUIPMENT
- FPT FREEZE UP PROTECTION THERMOSTAT
- FSS FILTER STATUS SWITCH
- FU FUSE
- GND GROUND
- HPS HIGH PRESSURE SWITCH
- HS HALL EFFECT SENSOR
- I IGNITOR
- IAQ INDOOR AIR QUALITY SENSOR
- IARH INDOOR AIR RELATIVE HUMIDITY SEN.
- IDM INDUCED DRAFT MOTOR
- IFM INDOOR FAN MOTOR
- IGC INTEGRATED GAS UNIT CONTROLLER
- LA LOW AMBIENT LOCKOUT
- LPS LOW PRESSURE SWITCH
- LS LIMIT SWITCH
- MGV MAIN GAS VALVE
- OARH OUTDOOR AIR RELATIVE HUMIDITY SEN.
- OAT OUTDOOR AIR TEMP. SEN.
- OFM OUTDOOR FAN MOTOR
- OLR OVERLOAD RELAY
- P PLUG
- PL PLUG ASSEMBLY
- POT POTENTIOMETER
- QT QUADRUPLE TERMINAL
- RAT RETURN AIR TEMP. SEN.
- RS ROLLOUT SWITCH
- SAT SUPPLY AIR TEMP. SEN.
- TRAN TRANSFORMER

## LEGEND

- FIELD SPLICE
- MARKED WIRE
- TERMINAL (MARKED)
- TERMINAL (UNMARKED)
- TERMINAL BLOCK
- SPLICE
- SPLICE (MARKED)
- FACTORY WIRING
- FIELD CONTROL WIRING
- FIELD POWER WIRING
- ACCESSORY OR OPTIONAL WIRING
- TO INDICATE COMMON POTENTIAL ONLY:  
NOT TO REPRESENT WIRING



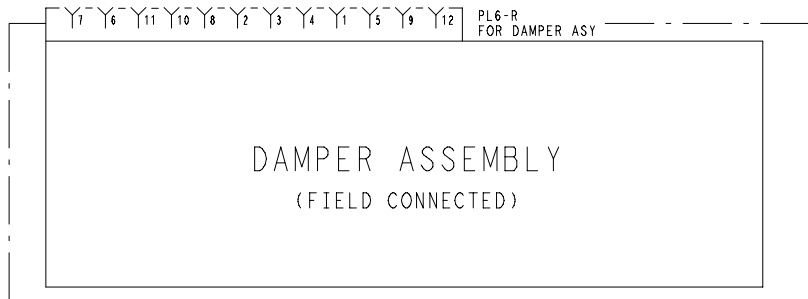
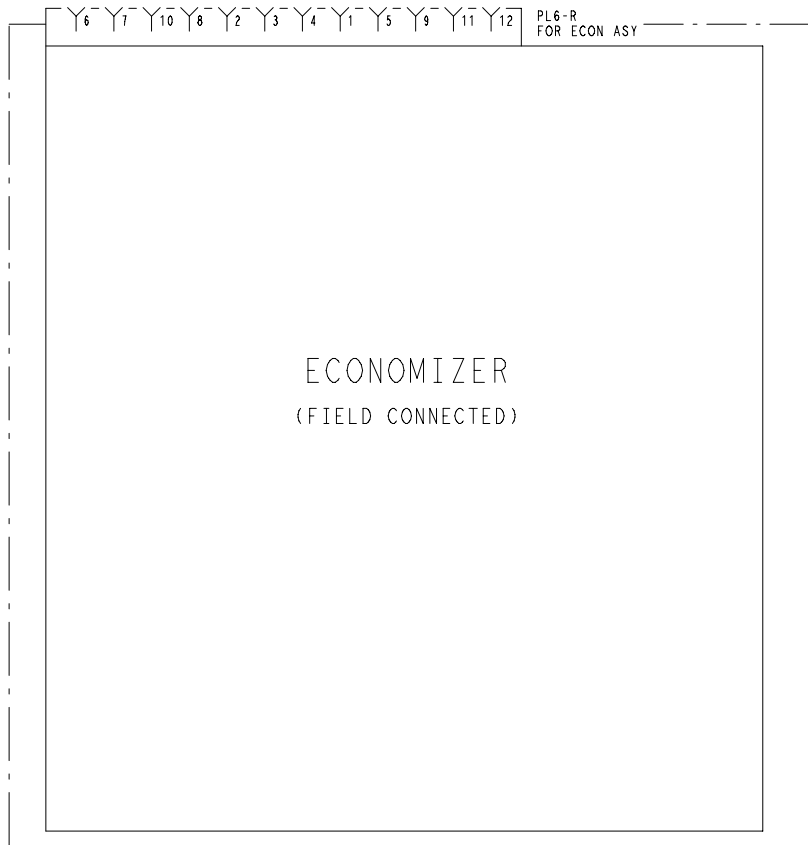
50DK509545 | 3.0



0-10VDC/4-20MA CONTROLLER CONNECTION FOR ECONOMIZER  
 FACTORY OR FIELD INSTALLED

CIRCUIT BREAKER	VOLTS	MFG. PT. NO.	MUST TRIP AMPS
CB	24V	POTTER & BRUMFIELD W28X-1024-3.2	3.2

50DK509337 3.0



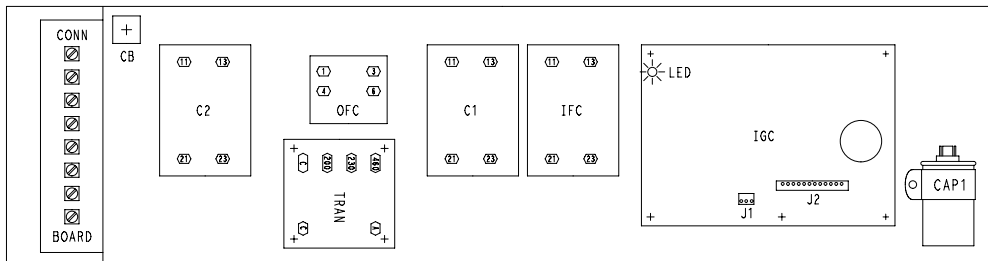
LEGEND

- FIELD SPlice
- MARKED WIRE
- TERMINAL (MARKED)
- TERMINAL (UNMARKED)
- TERMINAL BLOCK
- SPLICE
- SPLICE (MARKED)
- FACTORY WIRING
- FIELD CONTROL WIRING
- FIELD POWER WIRING
- ACCESSORY OR OPTIONAL WIRING
- TO INDICATE COMMON POTENTIAL ONLY:
- NOT TO REPRESENT WIRING

- AHA ADJUSTABLE HEAT ANTICIPATOR
- C CONTACTOR, COMPRESSOR
- CB CIRCUIT BREAKER
- CC COOLING COMPENSATOR
- CH CRANKCASE HEATER
- COMP COMPRESSOR MOTOR
- D DIODE
- EC ENTHALPY CONTROL
- ECON ECONOMIZER
- EPS EMERGENCY POWER SUPPLY (NINE VOLT BATTERY)
- EQUIP EQUIPMENT
- ER ECONOMIZER RELAY
- FPT FREEZE PROTECTION THERMOSTAT
- GND GROUND
- HPS HIGH PRESSURE SWITCH
- HS HALL EFFECT SENSOR
- I IGNITOR
- IGC INTEGRATED GAS UNIT CONTROLLER
- IDM INDUCED DRAFT MOTOR
- IFC INDOOR FAN CONTACTOR
- IFM INDOOR FAN MOTOR
- IFMOVL INDOOR FAN MOTOR OVERLOAD
- LPS LOW PRESSURE SWITCH
- LS LIMIT SWITCH
- MGV MAIN GAS VALVE
- MTR MOTOR
- OAT OUTDOOR AIR THERMOSTAT
- OFM OUTDOOR FAN MOTOR
- P PLUG
- PL PLUG ASSEMBLY
- QT QUADRUPLE TERMINAL RELAY
- R RELAY
- RS ROLLOUT SWITCH
- SAT SUPPLY AIR THERMOSTAT
- SEN SENSOR
- SW1 SWITCH FULLY OPEN
- SW2 SWITCH FULLY CLOSED
- SW3 SWITCH MIN. VENT POSITION
- SW4 SWITCH MAX. VENT POSITION
- TC THERMOSTAT-COOLING
- TH THERMOSTAT-HEATING
- TRAN TRANSFORMER

NOTES

1. IF ANY OF THE ORIGINAL WIRE FURNISHED MUST BE REPLACED, IT MUST BE REPLACED WITH TYPE 90 C WIRE OR ITS EQUIVALENT.
2. THREE PHASE MOTORS ARE PROTECTED UNDER PRIMARY SINGLE PHASING CONDITIONS.
3. FOR THERMOSTAT AND SUBBASE PART NO. SEE PRICE PAGES.
4. SET HEAT ANTICIPATOR FOR FIRST STAGE AT 0.14 AMPS, SECOND STAGE AT 0.2 AMPS.
5. USE COPPER CONDUCTORS ONLY.
6. TRAN IS WIRED FOR 230V UNIT. IF UNIT IS TO BE RUN WITH 208V POWER SUPPLY DISCONNECT BLK WIRE FROM 230V TAP (ORN) AND CONNECT TO 200V TAP (RED). INSULATE END OF 230V TAP.

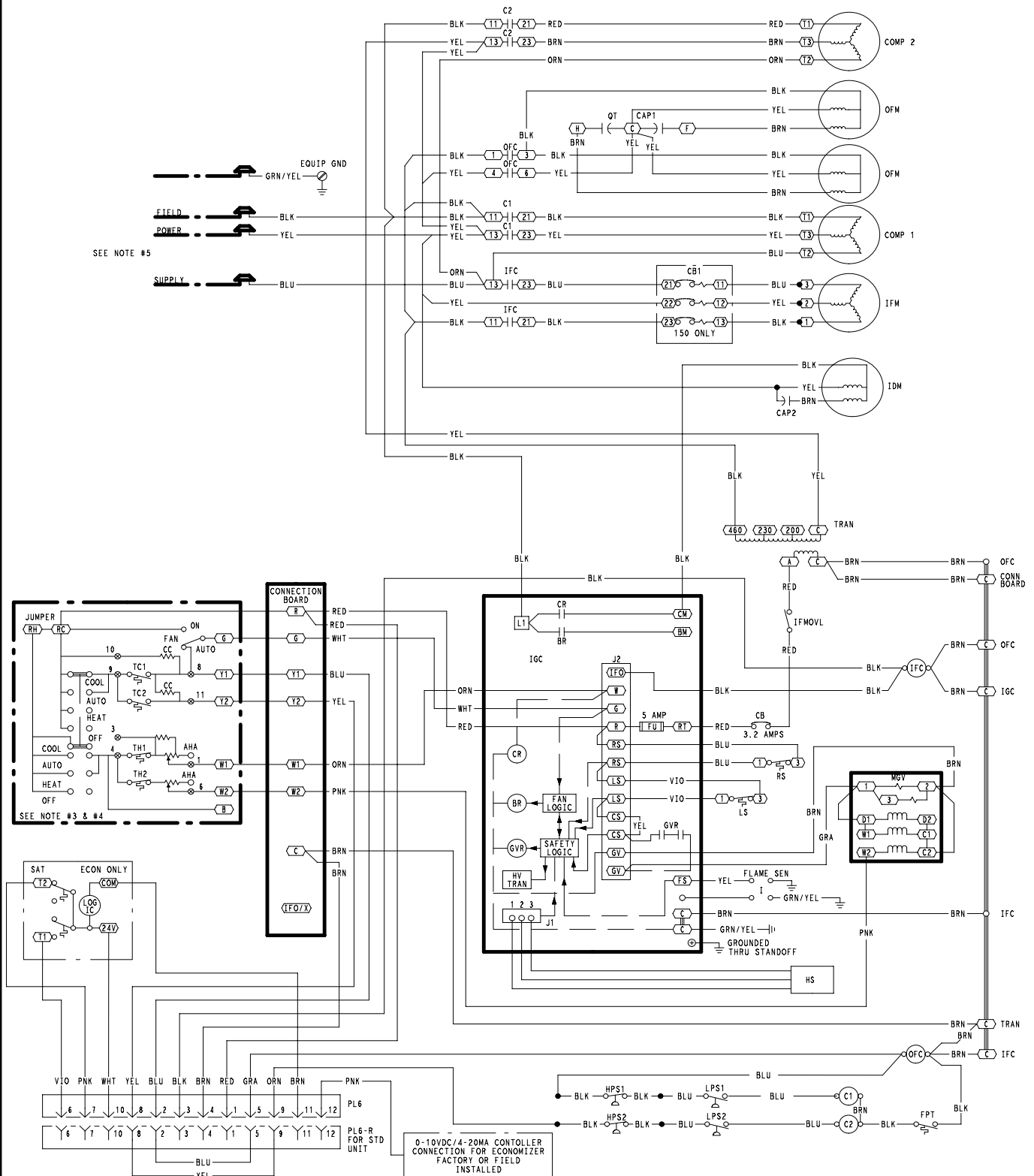


COMPONENT ARRANGEMENT

50DK509337 3.0

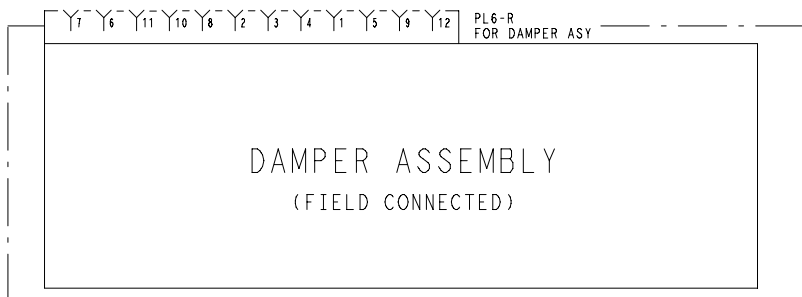
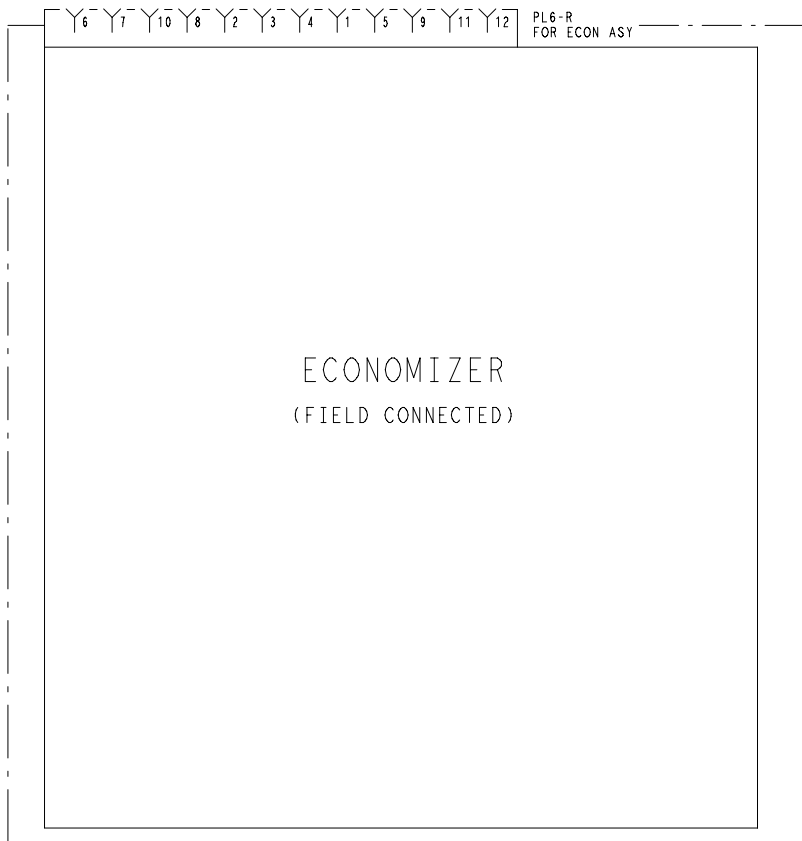
PGS090 - 150 460 - 3 - 60

SCHEMATIC



CIRCUIT BREAKER	VOLTS	MFG. PT. NO.	MUST TRIP AMPS
CB	24V	POTTER & BRUMFIELD	3.2
		W28X-1024-3.2	
CB1 014	460-3-60	HEINEMANN	8.5
		AIRPAX	
		CF3-Z228-41	219-3-2600-486

50DK509338 3.0



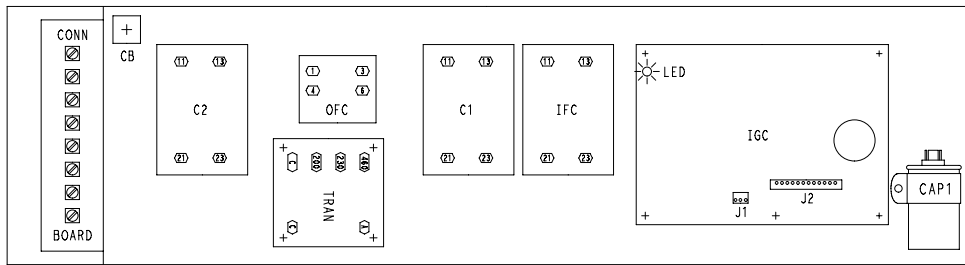
LEGEND

- FIELD SPLICE
- MARKED WIRE
- TERMINAL (MARKED)
- TERMINAL (UNMARKED)
- TERMINAL BLOCK
- SPLICE
- SPLICE (MARKED)
- FACTORY WIRING
- FIELD CONTROL WIRING
- FIELD POWER WIRING
- ACCESSORY OR OPTIONAL WIRING
- TO INDICATE COMMON POTENTIAL ONLY:
- NOT TO REPRESENT WIRING

- AHA ADJUSTABLE HEAT ANTICIPATOR
- C CONTACTOR, COMPRESSOR
- CB CIRCUIT BREAKER
- CC COOLING COMPENSATOR
- CH CRANKCASE HEATER
- COMP COMPRESSOR MOTOR
- D DIODE
- EC ENTHALPY CONTROL
- ECON ECONOMIZER
- EPS EMERGENCY POWER SUPPLY (NINE VOLT BATTERY)
- EQUIP EQUIPMENT
- ER ECONOMIZER RELAY
- FPT FREEZE PROTECTION THERMOSTAT
- GND GROUND
- HPS HIGH PRESSURE SWITCH
- HS HALL EFFECT SENSOR
- I IGNITOR
- IGC INTEGRATED GAS UNIT CONTROLLER
- IDM INDUCED DRAFT MOTOR
- IFC INDOOR FAN CONTACTOR
- IFM INDOOR FAN MOTOR
- IFMOVL INDOOR FAN MOTOR OVERLOAD
- LPS LOW PRESSURE SWITCH
- LS LIMIT SWITCH
- MGV MAIN GAS VALVE
- MTR MOTOR
- OAT OUTDOOR AIR THERMOSTAT
- OFM OUTDOOR FAN MOTOR
- P PLUG
- PL PLUG ASSEMBLY
- QT QUADRUPLE TERMINAL
- R RELAY
- RS ROLLOUT SWITCH
- SAT SUPPLY AIR THERMOSTAT
- SEN SENSOR
- SW1 SWITCH FULLY OPEN
- SW2 SWITCH FULLY CLOSED
- SW3 SWITCH MIN. VENT POSITION
- SW4 SWITCH MAX. VENT POSITION
- TC THERMOSTAT-COOLING
- TH THERMOSTAT-HEATING
- TRAN TRANSFORMER

NOTES

1. IF ANY OF THE ORIGINAL WIRE FURNISHED MUST BE REPLACED, IT MUST BE REPLACED WITH TYPE 90 C WIRE OR ITS EQUIVALENT.
2. THREE PHASE MOTORS ARE PROTECTED UNDER PRIMARY SINGLE PHASING CONDITIONS.
3. FOR THERMOSTAT AND SUBBASE PART NO. SEE PRICE PAGES.
4. SET HEAT ANTICIPATOR FOR FIRST STAGE AT 0.14 AMPS, SECOND STAGE AT 0.2 AMPS.
5. USE COPPER CONDUCTORS ONLY.

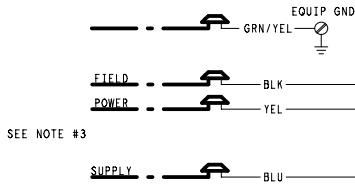


COMPONENT ARRANGEMENT

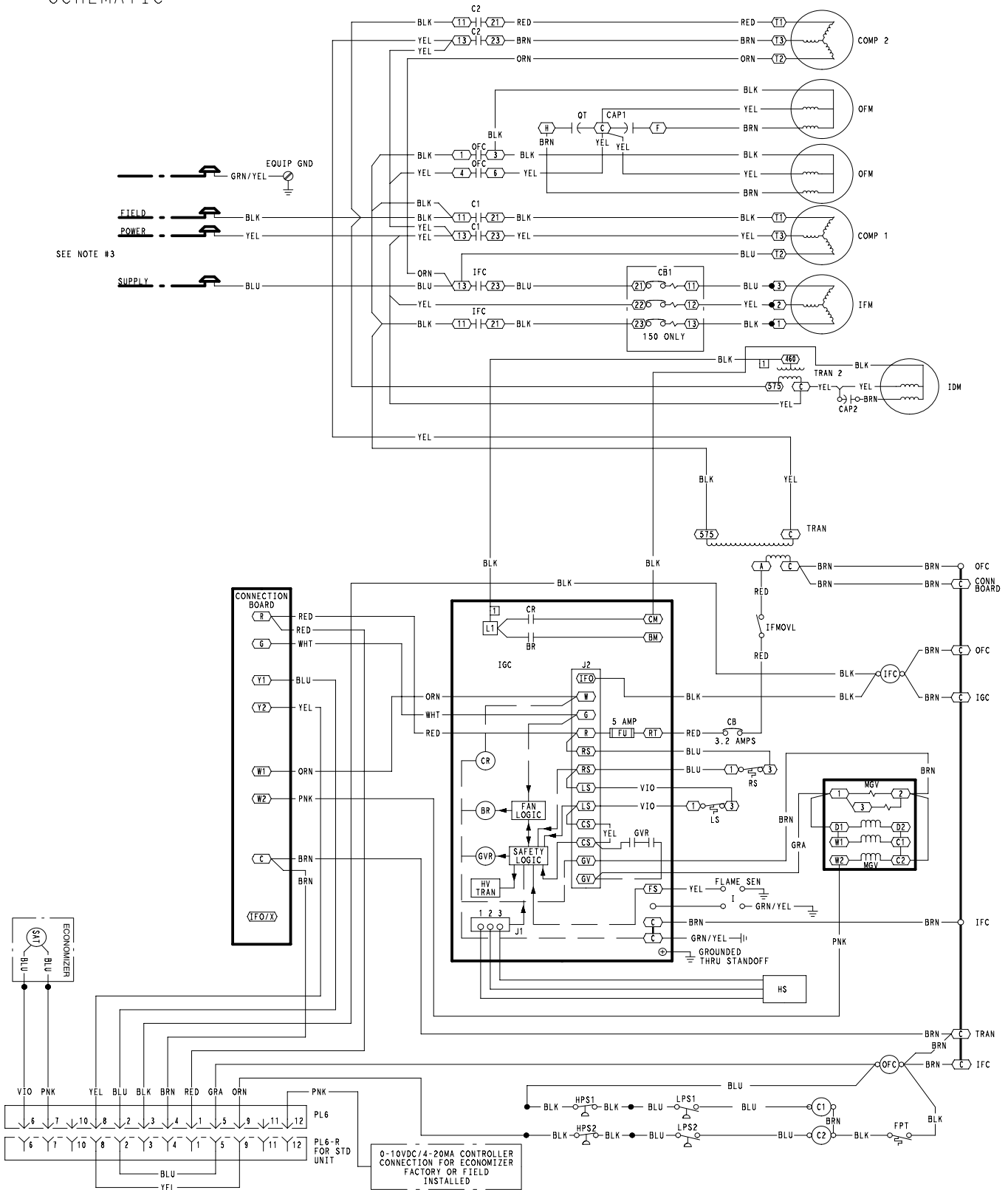
50DK509338 3.0

PGS090 - 150 575 - 3 - 60

SCHEMATIC

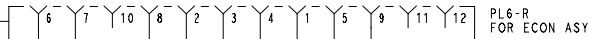


SEE NOTE #3



CIRCUIT BREAKER	VOLTS	MFG. PT. NO.	MUST TRIP AMPS
CB	24V	POTTER & BRUMFIELD W28-X1075-3.2	3.2
CB1 150	575-3-60	HEINEMANN AIRPAX CF3-Z229-1 219-3-2600-544	7.0

50DK509513 6.0



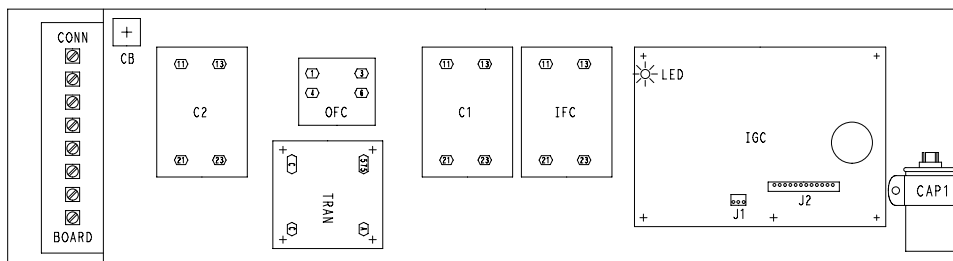
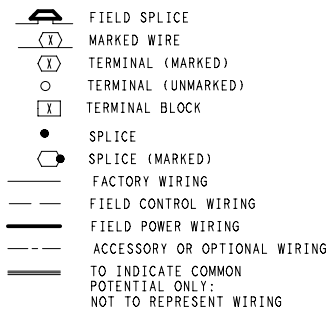
# ECONOMIZER WIRING (FIELD CONNECTED)

### NOTES

1. IF ANY OF THE ORIGINAL WIRE FURNISHED MUST BE REPLACED. IT MUST BE REPLACED WITH TYPE 90 C WIRE OR ITS EQUIVALENT.
2. COMPRESSOR AND FAN MOTORS ARE THERMALLY PROTECTED. THREE PHASE MOTORS ARE PROTECTED AGAINST PRIMARY SINGLE PHASING CONDITIONS.
3. USE COPPER CONDUCTOR ONLY.

C	CONTACTOR, COMPRESSOR
CB	CIRCUIT BREAKER
CH	CRANKCASE HEATER
CLO	COMPRESSOR LOCKOUT
COMP	COMPRESSOR MOTOR
EQUIP	EQUIPMENT
FPT	FREEZE UP PROTECTION THERMOSTAT
GND	GROUND
HPS	HIGH PRESSURE SWITCH
HS	HALL EFFECT SEN.
I	IGNITOR
IAO	INDOOR AIR QUALITY SEN.
IARH	INDOOR AIR RELATIVE HUMIDITY SEN.
IDM	INDUCED DRAFT MOTOR
IFC	INDOOR FAN CONTACTOR
IFM	INDOOR FAN MOTOR
IFMOVL	INDOOR FAN MOTOR OVERLOAD SWITCH
IGC	INTEGRATED GAS UNIT CONTROLLER
LPS	LOW PRESSURE SWITCH
LS	LIMIT SWITCH
MGV	MAIN GAS VALVE
MTR	MOTOR
OARH	OUTDOOR AIR RELATIVE HUMIDITY SEN.
OAT	OUTDOOR AIR TEMP. SEN.
OFC	OUTDOOR FAN CONTACTOR
OFM	OUTDOOR FAN MOTOR
P	PLUG
PL	PLUG ASSEMBLY
POT	POTENTIOMETER
QT	QUADRUPLE TERMINAL
RAT	RETURN AIR TEMP. SEN.
RS	ROLLOUT SWITCH
SAT	SUPPLY AIR TEMP. SEN.
SEN	SENSOR
TRAN	TRANSFORMER

### LEGEND



COMPONENT ARRANGEMENT

50DK509513 6.0