

Parts List, Charging Chart, Tech Labels, Wiring Diagrams

PGF3 3Phase SERIES

PACKAGE GAS ELECTRIC UNITS



TABLE OF CONTENTS

PARTS LIST -----	2-13
PARTS DRAWING -----	14
CHARGING CHARTS---	15-16
TECH LABELS	
PGF3 36 - 42 -----	17
PGF3 48 - 54 -----	18
WIRING DIAGRAMS ---	19-22



PGF3 3 PHASE PARTS LIST

KEY NO.	DESCRIPTION	FAST PART NO.	PGF336060H00A1	PGF336080H00A1	PGF336100H00A1	PGF342080H00A1	PGF342100H00A1	PGF348080H00A1	PGF348120H00A1	PGF354100H00A1	PGF354140H00A1
1	COMPRESSOR	1084533	1	1	1	*	*	*	*	*	*
1	COMPRESSOR	1084534	*	*	*	1	1	*	*	*	*
1	COMPRESSOR	ZRS43K4TF5130	*	*	*	*	*	1	1	*	*
1	COMPRESSOR	ZRS52K4TF5130	*	*	*	*	*	*	*	1	1
2	MOTOR, CONDENSER FAN	1173700	1	1	1	1	1	1	1	*	*
2	MOTOR, CONDENSER FAN	1173701	*	*	*	*	*	*	*	1	1
3	FAN, CONDENSER	1173706	1	1	1	1	1	1	1	*	*
3	FAN, CONDENSER	1173707	*	*	*	*	*	*	*	1	1
4	COIL, EVAPORATOR MANIFOLDS INCLUDED	1174223	1	1	1	*	*	*	*	*	*
4	COIL, EVAPORATOR MANIFOLDS INCLUDED	1174224	*	*	*	1	1	*	*	*	*
4	COIL, EVAPORATOR MANIFOLDS INCLUDED	1174225	*	*	*	*	*	1	1	*	*
4	COIL, EVAPORATOR MANIFOLDS INCLUDED	1174226	*	*	*	*	*	*	*	1	1
5	FLOW RESTRICTER (.082")	1173870	1	1	1	*	*	*	*	*	*
6	TAILPIECE KIT	1174325	1	1	1	*	*	*	*	*	*
7	DISTRIBUTOR (R-22)	1174242	1	1	1	*	*	*	*	*	*
7	DISTRIBUTOR (R-22)	1174243	*	*	*	1	1	1	1	*	*
7	DISTRIBUTOR (R-22)	1174244	*	*	*	*	*	*	*	1	1
8	BAFFLE, GAS (LOW NOX ONLY) 1 IN THE 12TH DIGIT	1014019	3	4	4	4	4	4	5	4	6
9	KIT, BLOWER MOTOR MOUNTING	1174295	1	1	1	1	1	*	*	*	*
9	KIT, BLOWER MOTOR MOUNTING	1114377	*	*	*	*	*	1	1	1	1
10	WHEEL, BLOWER (11-9DD)	1171742	1	1	1	1	1	*	*	*	*
10	WHEEL, BLOWER (11-11DD)	1097529	*	*	*	*	*	1	1	1	1
11	MOTOR, BLOWER (208-230 VAC, 6A, 1 PHASE, 3/4 HP)	1173817	1	1	1	1	1	*	*	*	*
11	MOTOR, BLOWER (208-230 VAC, 7.6A, 1 PHASE, 1 HP)	1173819	*	*	*	*	*	1	1	*	*
11	MOTOR, BLOWER (208-230 VAC, 7.6A, 1 PHASE, 1 HP)	1173820	*	*	*	*	*	*	*	1	1
12	CAPACITOR (5 MFD, 370V)	1172149	1	1	1	1	1	1	1	*	*
12	CAPACITOR (10 MFD, 370V)	1171807	*	*	*	*	*	*	*	1	1
13	CONTACTOR (SPST, NO, 20A, 24VAC)	1171160	1	1	1	1	1	*	*	*	*
13	CONTACTOR (SPST, NO, 25A, 24VAC)	1174905	*	*	*	*	*	1	1	1	1
14	CIRCUIT BREAKER (250VAC, 3.2A)	1171114	*	*	*	*	*	1	1	1	1
15	TRANSFORMER (208/230V-24V 40VA)	1173691	1	1	1	1	1	*	*	*	*
15	TRANSFORMER (200/230/460V-24V 75VA)	1171496	*	*	*	*	*	1	1	1	1
16	CONTROL BOARD (MOTOR)	1173823	1	1	1	1	1	*	*	*	*
16	CONTROL BOARD (MOTOR)	1174144	*	*	*	*	*	1	1	1	1
17	COIL, CONDENSER MANIFOLDS INCLUDED	1174248	1	1	1	*	*	*	*	*	*
17	COIL, CONDENSER MANIFOLDS INCLUDED	1174249	*	*	*	1	1	*	*	*	*
17	COIL, CONDENSER MANIFOLDS INCLUDED	1174250	*	*	*	*	*	1	1	*	*
17	COIL, CONDENSER MANIFOLDS INCLUDED	1174251	*	*	*	*	*	*	*	1	1
18	PLUG, COMPRESSOR	1174904	1	1	1	1	1	1	1	1	1
19	PLUG, SOLENOID	1173827	*	*	*	*	*	1	1	1	1
20	VALVE, SERVICE (HI/LO PORT)	1083939	1	1	1	1	1	1	1	1	1
23	HEATER, CRANKCASE (40W, 240V, FIT 17" DIA.)	1173825	1	1	1	1	1	1	1	1	1
25	SWITCH, HIGH PRESSURE CUT OUT	1173712	*	*	*	*	*	1	1	1	1
26	VALVE EXPANSION (3-TON)	1173833	*	*	*	1	1	*	*	*	*
26	VALVE EXPANSION (4-TON)	1173834	*	*	*	*	*	1	1	*	*

PGF3 3 PHASE PARTS LIST (continued)

KEY NO.	DESCRIPTION	FAST PART NO.	PGF336060H00A1	PGF336080H00A1	PGF336100H00A1	PGF342080H00A1	PGF342100H00A1	PGF348080H00A1	PGF348120H00A1	PGF354100H00A1	PGF354140H00A1
			*	*	*	*	*	*	*	*	*
26	VALVE EXPANSION (5-TON)	1173835	*	*	*	*	*	*	*	1	1
27	SWITCH, LIMIT (170 DEG.)	1095242	1	1	1	1	1	*	*	*	*
27	SWITCH, LIMIT (160 DEG.)	1065207	*	*	*	*	*	1	*	1	1
27	SWITCH, LIMIT (150 DEG.)	1065638	*	*	*	*	*	*	1	*	*
29	IGNITER CONTROL, REMOTE SPARK	1173831	1	1	1	1	1	1	1	1	1
30	TUBE, VACUUM	1013088	1	1	1	1	1	1	1	1	1
31	BURNER ASY (3 SECTION)	1008724	1	*	*	*	*	*	*	*	*
31	BURNER ASY (4 SECTION)	1008725	*	1	1	1	1	1	*	1	*
31	BURNER ASY (5 SECTION)	1008726	*	*	*	*	*	*	1	*	*
31	BURNER ASY (6 SECTION)	1009179	*	*	*	*	*	*	*	*	1
32	SWITCH, ROLLOUT (300 DEG.)	1013102	1	1	1	1	1	1	1	1	1
33	IGNITER CONTROL, SPARKER	1173828	1	1	1	1	1	1	1	1	1
34	SENSOR, FLAME	1173830	1	1	1	1	1	1	1	1	1
35	VALVE, GAS	1173845	1	1	1	1	1	1	1	1	1
36	ORIFICE, SPUD (#44)	1011352	3	4	4	4	*	4	*	*	*
36	ORIFICE, SPUD (#41)	1096942	*	*	*	*	4	*	*	4	*
36	ORIFICE, SPUD (#42)	1011351	*	*	*	*	*	*	5	*	6
37	MANIFOLD (3 SPUD)	1084113	1	*	*	*	*	*	*	*	*
37	MANIFOLD (4 SPUD)	1084114	*	1	1	1	1	1	*	1	*
37	MANIFOLD (5 SPUD)	1084115	*	*	*	*	*	*	1	*	*
37	MANIFOLD (6 SPUD)	1084116	*	*	*	*	*	*	*	*	1
38	SWITCH, TEMPERATURE (SECONDARY 120 DEG.)	1173822	1	1	1	1	1	1	1	1	1
39	BOX, COLLECTOR	1011046	1	*	*	*	*	*	*	*	*
39	BOX, COLLECTOR	1172352	*	1	1	1	*	1	*	*	*
39	BOX, COLLECTOR	1011052	*	*	*	*	1	*	*	1	*
39	BOX, COLLECTOR	1011055	*	*	*	*	*	*	1	*	*
39	BOX, COLLECTOR	1011057	*	*	*	*	*	*	*	*	1
40	GASKET, COLLECTOR	1093661	1	*	*	*	*	*	*	*	*
40	GASKET, COLLECTOR	1093662	*	1	1	1	1	1	*	1	*
40	GASKET, COLLECTOR	1093663	*	*	*	*	*	*	1	*	1
41	HEAT EXCHANGER (60K BTUH)	1012407	1	*	*	*	*	*	*	*	*
41	HEAT EXCHANGER (80K & 100 BTUH)	1011364	*	1	1	1	1	*	*	*	*
41	HEAT EXCHANGER (80K BTUH)	1011363	*	*	*	*	*	1	*	1	*
41	HEAT EXCHANGER (120K BTUH)	1012408	*	*	*	*	*	*	1	*	*
41	HEAT EXCHANGER (140K BTUH)	1011366	*	*	*	*	*	*	*	*	1
42	PANEL ASY, PARTITION (3 BURNER)	1012410	1	*	*	*	*	*	*	*	*
42	PANEL ASY, PARTITION (4 BURNER)	1008071	*	*	*	*	*	1	*	1	*
42	PANEL ASY, PARTITION (4 BURNER)	1008072	*	1	1	1	1	*	*	*	*
42	PANEL ASY, PARTITION (5 BURNER)	1012411	*	*	*	*	*	*	1	*	*
42	PANEL ASY, PARTITION (6 BURNER)	1008074	*	*	*	*	*	*	*	*	1
44	GASKET, COMBUSTION BLOWER	1110691	1	1	1	1	1	1	1	1	1
45	BLOWER, COMBUSTION	1110008	1	1	1	1	1	1	1	1	1
46	CONTROL BOARD (IGNITION)	1173838	1	1	1	1	1	1	1	1	1
56	SWITCH, VACUUM (BG & CG)	1172197	1	1	1	1	1	1	1	1	1
57	RAIL, BASE W/FORK HOLES	1098870	2	2	2	2	2	2	2	2	2

PGF3 3 PHASE PARTS LIST (continued)

KEY NO.	DESCRIPTION	FAST PART NO.	PGF336060H00A1	PGF336080H00A1	PGF336100H00A1	PGF342080H00A1	PGF342100H00A1	PGF348080H00A1	PGF348120H00A1	PGF354100H00A1	PGF354140H00A1
58	RAIL, BASE WO/FORK HOLES	1098868	2	2	2	2	2	2	2	2	2
A	PANEL, TOP	1174741	1	1	1	1	1	*	*	*	*
A	PANEL, TOP	1174460	*	*	*	*	*	1	1	1	1
B	GRILLE, OUTLET	1173832	1	1	1	1	1	1	1	1	1
C	GRILLE, INLET	1097528	1	1	1	1	1	1	1	1	1
F	NUT, CAP	1172740	4	4	4	4	4	4	4	4	4
G	PANEL, COMPRESSOR ACCESS	1111015	1	1	1	1	1	1	1	1	1
H	PLATE, HI/LO PORT	1085473	1	1	1	1	1	1	1	1	1
J	HOUSING, BLOWER	1174167	1	1	1	1	1	*	*	*	*
J	HOUSING, BLOWER	1099242	*	*	*	*	*	1	1	1	1
L	PIPE COMB BLR	1096959	1	1	1	1	1	*	*	*	*
L	PIPE COMB BLR	1084138	*	*	*	*	*	1	1	1	1
M	COVER, FLUE OR VENT	1096961	1	1	1	1	1	1	1	1	1
N	SHIELD, BURNER TOP	1084200	1	*	*	*	*	*	*	*	*
N	SHIELD, BURNER TOP	1084202	*	1	1	1	1	1	*	1	*
N	SHIELD, BURNER TOP	1084204	*	*	*	*	*	*	1	*	*
N	SHIELD, BURNER TOP	1084206	*	*	*	*	*	*	*	*	1
NN	SHIELD, BURNER BOTTOM	1084201	1	*	*	*	*	*	*	*	*
NN	SHIELD, BURNER BOTTOM	1084203	*	1	1	1	1	1	*	1	*
NN	SHIELD, BURNER BOTTOM	1084205	*	*	*	*	*	*	1	*	*
NN	SHIELD, BURNER BOTTOM	1084207	*	*	*	*	*	*	*	*	1
P	PANEL, REAR	1174309	1	1	1	1	1	*	*	*	*
P	PANEL, REAR	1114532	*	*	*	*	*	1	1	1	1
R	COVER, DUCTS	1114525	2	2	2	2	2	2	2	2	2
S	PANEL, ACCESS CONTROL BOX	1097977	1	1	1	1	1	*	*	*	*
S	PANEL, ACCESS CONTROL BOX	1084150	*	*	*	*	*	1	1	1	1
T	POST, CORNER	1174310	1	1	1	1	1	*	*	*	*
T	POST, CORNER	1114538	*	*	*	*	*	1	1	1	1
U	PANEL, ACCESS BLOWER	1114536	1	1	1	1	1	1	1	1	1
W	BRACKET, SUPPORT (MANIFOLD)	1011820	2	2	2	2	2	2	2	2	2
ZZ	PAN, DRAIN (EVAPORATOR)	1172243	1	1	1	1	1	1	1	1	1
PARTS NOT SHOWN											
)	(HARNESS, WIRE (DUAL CAPACITY ADAPTER)	1174320	*	*	*	*	*	1	1	1	1
)	(HARNESS, WIRE (DUAL CAPACITY YAC)	1174319	*	*	*	*	*	1	1	1	1
)	(HARNESS, WIRE (SINGLE CAPACITY YAC)	1174311	1	1	1	1	1	*	*	*	*
)	(HARNESS, WIRE (ECONOMIZER)	1174903	1	1	1	1	1	1	1	1	1
)	(CONV KIT NAT > LP PGF 100-140	1173855	*	*	1	*	1	*	1	1	1
)	(CONV KIT NAT > LP PGF 0-4000'	1173857	*	*	1	*	1	*	1	1	1
)	(CONV KIT NAT > LP PGF 4001-9000'	1173859	*	*	1	*	1	*	1	1	1
)	(CONV KIT NAT > LP PGF 0-4000'	1173857	1	1	*	1	*	1	*	*	*
)	(CONV KIT NAT > LP PGF 4001-9000'	1173859	1	1	*	1	*	1	*	*	*
)	(CONV KIT NAT > LP PGF 9001-10,000'	1173861	1	1	*	1	*	1	*	*	*
)	(CONV KIT LP > NAT	1173863	1	1	*	1	*	1	*	*	*
)	(CONV KIT LP > NAT	1173865	*	*	1	*	1	*	1	1	1

PGF3 3 PHASE PARTS LIST

KEY NO.	DESCRIPTION	FAST PART NO.	PGF336060H01A1	PGF336080H01A1	PGF336100H01A1	PGF342080H01A1	PGF342100H01A1	PGF348080H01A1	PGF348120H01A1	PGF354100H01A1	PGF354140H01A1
1	COMPRESSOR	1084533	1	1	1	*	*	*	*	*	*
1	COMPRESSOR	1084534	*	*	*	1	1	*	*	*	*
1	COMPRESSOR	ZRS43K4TF5130	*	*	*	*	*	1	1	*	*
1	COMPRESSOR	ZRS52K4TF5130	*	*	*	*	*	*	*	1	1
2	MOTOR, CONDENSER FAN	1173700	1	1	1	1	1	1	1	*	*
2	MOTOR, CONDENSER FAN	1173701	*	*	*	*	*	*	*	1	1
3	FAN, CONDENSER	1173706	1	1	1	1	1	1	1	*	*
3	FAN, CONDENSER	1173707	*	*	*	*	*	*	*	1	1
4	COIL, EVAPORATOR MANIFOLDS INCLUDED	1174223	1	1	1	*	*	*	*	*	*
4	COIL, EVAPORATOR MANIFOLDS INCLUDED	1174224	*	*	*	1	1	*	*	*	*
4	COIL, EVAPORATOR MANIFOLDS INCLUDED	1174225	*	*	*	*	*	1	1	*	*
4	COIL, EVAPORATOR MANIFOLDS INCLUDED	1174226	*	*	*	*	*	*	*	1	1
5	FLOW RESTRICTER (.082")	1173870	1	1	1	*	*	*	*	*	*
6	TAILPIECE KIT	1174325	1	1	1	*	*	*	*	*	*
7	DISTRIBUTOR (R-22)	1174242	1	1	1	*	*	*	*	*	*
7	DISTRIBUTOR (R-22)	1174243	*	*	*	1	1	1	1	*	*
7	DISTRIBUTOR (R-22)	1174244	*	*	*	*	*	*	*	1	1
8	BAFFLE, GAS (LOW NOX ONLY) 1 IN THE 12TH DIGIT	1014019	3	4	4	4	4	4	5	4	6
9	KIT, BLOWER MOTOR MOUNTING	1174295	1	1	1	1	1	*	*	*	*
9	KIT, BLOWER MOTOR MOUNTING	1114377	*	*	*	*	*	1	1	1	1
10	WHEEL, BLOWER (11-9DD)	1171742	1	1	1	1	1	*	*	*	*
10	WHEEL, BLOWER (11-11DD)	1097529	*	*	*	*	*	1	1	1	1
11	MOTOR, BLOWER (208-230 VAC, 6A, 1 PHASE, 3/4 HP)	1173817	1	1	1	1	1	*	*	*	*
11	MOTOR, BLOWER (208-230 VAC, 7.6A, 1 PHASE, 1 HP)	1173819	*	*	*	*	*	1	1	*	*
11	MOTOR, BLOWER (208-230 VAC, 7.6A, 1 PHASE, 1 HP)	1173820	*	*	*	*	*	*	*	1	1
12	CAPACITOR (5 MFD, 370V)	1172149	1	1	1	1	1	1	1	*	*
12	CAPACITOR (10 MFD, 370V)	1171807	*	*	*	*	*	*	*	1	1
13	CONTACTOR (SPST, NO, 20A, 24VAC)	1171160	1	1	1	1	1	*	*	*	*
13	CONTACTOR (SPST, NO, 25A, 24VAC)	1174905	*	*	*	*	*	1	1	1	1
14	CIRCUIT BREAKER (250VAC, 3.2A)	1171114	*	*	*	*	*	1	1	1	1
15	TRANSFORMER (208/230V-24V 40VA)	1173691	1	1	1	1	1	*	*	*	*
15	TRANSFORMER (200/230/460V-24V 75VA)	1171496	*	*	*	*	*	1	1	1	1
16	CONTROL BOARD (MOTOR)	1173823	1	1	1	1	1	*	*	*	*
16	CONTROL BOARD (MOTOR)	1174144	*	*	*	*	*	1	1	1	1
17	COIL, CONDENSER MANIFOLDS INCLUDED	1174248	1	1	1	*	*	*	*	*	*
17	COIL, CONDENSER MANIFOLDS INCLUDED	1174249	*	*	*	1	1	*	*	*	*
17	COIL, CONDENSER MANIFOLDS INCLUDED	1174250	*	*	*	*	*	1	1	*	*
17	COIL, CONDENSER MANIFOLDS INCLUDED	1174251	*	*	*	*	*	*	*	1	1
18	PLUG, COMPRESSOR	1174904	1	1	1	1	1	1	1	1	1
19	PLUG, SOLENOID	1173827	*	*	*	*	*	1	1	1	1
20	VALVE, SERVICE (HI/LO PORT)	1083939	1	1	1	1	1	1	1	1	1
23	HEATER, CRANKCASE (40W, 240V, FIT 17" DIA.)	1173825	1	1	1	1	1	1	1	1	1
25	SWITCH, HIGH PRESSURE CUT OUT	1173712	*	*	*	*	*	1	1	1	1
26	VALVE EXPANSION (3-TON)	1173833	*	*	*	1	1	*	*	*	*
26	VALVE EXPANSION (4-TON)	1173834	*	*	*	*	*	1	1	*	*

PGF3 3 PHASE PARTS LIST (continued)

KEY NO.	DESCRIPTION	FAST PART NO.	PGF336060H01A1	PGF336080H01A1	PGF336100H01A1	PGF342080H01A1	PGF342100H01A1	PGF348080H01A1	PGF348120H01A1	PGF354100H01A1	PGF354140H01A1
			*	*	*	*	*	*	*	*	*
26	VALVE EXPANSION (5-TON)	1173835	*	*	*	*	*	*	*	1	1
27	SWITCH, LIMIT (170 DEG.)	1095242	1	1	1	1	1	*	*	*	*
27	SWITCH, LIMIT (160 DEG.)	1065207	*	*	*	*	*	1	*	1	1
27	SWITCH, LIMIT (150 DEG.)	1065638	*	*	*	*	*	*	1	*	*
29	IGNITER CONTROL, REMOTE SPARK	1173831	1	1	1	1	1	1	1	1	1
30	TUBE, VACUUM	1013088	1	1	1	1	1	1	1	1	1
31	BURNER ASY (3 SECTION)	1008724	1	*	*	*	*	*	*	*	*
31	BURNER ASY (4 SECTION)	1008725	*	1	1	1	1	1	*	1	*
31	BURNER ASY (5 SECTION)	1008726	*	*	*	*	*	*	1	*	*
31	BURNER ASY (6 SECTION)	1009179	*	*	*	*	*	*	*	*	1
32	SWITCH, ROLLOUT (300 DEG.)	1013102	1	1	1	1	1	1	1	1	1
33	IGNITER CONTROL, SPARKER	1173828	1	1	1	1	1	1	1	1	1
34	SENSOR, FLAME	1173830	1	1	1	1	1	1	1	1	1
35	VALVE, GAS	1173845	1	1	1	1	1	1	1	1	1
36	ORIFICE, SPUD (#44)	1011352	3	4	4	4	*	4	*	*	*
36	ORIFICE, SPUD (#41)	1096942	*	*	*	*	4	*	*	4	*
36	ORIFICE, SPUD (#42)	1011351	*	*	*	*	*	*	5	*	6
37	MANIFOLD (3 SPUD)	1084113	1	*	*	*	*	*	*	*	*
37	MANIFOLD (4 SPUD)	1084114	*	1	1	1	1	1	*	1	*
37	MANIFOLD (5 SPUD)	1084115	*	*	*	*	*	*	1	*	*
37	MANIFOLD (6 SPUD)	1084116	*	*	*	*	*	*	*	*	1
38	SWITCH, TEMPERATURE (SECONDARY 120 DEG.)	1173822	1	1	1	1	1	1	1	1	1
39	BOX, COLLECTOR	1011046	1	*	*	*	*	*	*	*	*
39	BOX, COLLECTOR	1172352	*	1	1	1	*	1	*	*	*
39	BOX, COLLECTOR	1011052	*	*	*	*	1	*	*	1	*
39	BOX, COLLECTOR	1011055	*	*	*	*	*	*	1	*	*
39	BOX, COLLECTOR	1011057	*	*	*	*	*	*	*	*	1
40	GASKET, COLLECTOR	1093661	1	*	*	*	*	*	*	*	*
40	GASKET, COLLECTOR	1093662	*	1	1	1	1	1	*	1	*
40	GASKET, COLLECTOR	1093663	*	*	*	*	*	*	1	*	1
41	HEAT EXCHANGER (60K BTUH)	1012407	1	*	*	*	*	*	*	*	*
41	HEAT EXCHANGER (80K & 100 BTUH)	1011364	*	1	1	1	1	*	*	*	*
41	HEAT EXCHANGER (80K BTUH)	1011363	*	*	*	*	*	1	*	1	*
41	HEAT EXCHANGER (120K BTUH)	1012408	*	*	*	*	*	*	1	*	*
41	HEAT EXCHANGER (140K BTUH)	1011366	*	*	*	*	*	*	*	*	1
42	PANEL ASY, PARTITION (3 BURNER)	1012410	1	*	*	*	*	*	*	*	*
42	PANEL ASY, PARTITION (4 BURNER)	1008071	*	*	*	*	*	1	*	1	*
42	PANEL ASY, PARTITION (4 BURNER)	1008072	*	1	1	1	1	*	*	*	*
42	PANEL ASY, PARTITION (5 BURNER)	1012411	*	*	*	*	*	*	1	*	*
42	PANEL ASY, PARTITION (6 BURNER)	1008074	*	*	*	*	*	*	*	*	1
44	GASKET, COMBUSTION BLOWER	1110691	1	1	1	1	1	1	1	1	1
45	BLOWER, COMBUSTION	1110008	1	1	1	1	1	1	1	1	1
46	CONTROL BOARD (IGNITION)	1173838	1	1	1	1	1	1	1	1	1
56	SWITCH, VACUUM (BG & CG)	1172197	1	1	1	1	1	1	1	1	1
57	RAIL, BASE W/FORK HOLES	1098870	2	2	2	2	2	2	2	2	2

PGF3 3 PHASE PARTS LIST (continued)

KEY NO.	DESCRIPTION	FAST PART NO.	PGF336060H01A1	PGF336080H01A1	PGF336100H01A1	PGF342080H01A1	PGF342100H01A1	PGF348080H01A1	PGF348120H01A1	PGF354100H01A1	PGF354140H01A1
58	RAIL, BASE WO/FORK HOLES	1098868	2	2	2	2	2	2	2	2	2
A	PANEL, TOP	1174741	1	1	1	1	1	*	*	*	*
A	PANEL, TOP	1174460	*	*	*	*	*	1	1	1	1
B	GRILLE, OUTLET	1173832	1	1	1	1	1	1	1	1	1
C	GRILLE, INLET	1097528	1	1	1	1	1	1	1	1	1
F	NUT, CAP	1172740	4	4	4	4	4	4	4	4	4
G	PANEL, COMPRESSOR ACCESS	1111015	1	1	1	1	1	1	1	1	1
H	PLATE, HI/LO PORT	1085473	1	1	1	1	1	1	1	1	1
J	HOUSING, BLOWER	1174167	1	1	1	1	1	*	*	*	*
J	HOUSING, BLOWER	1099242	*	*	*	*	*	1	1	1	1
L	PIPE COMB BLR	1096959	1	1	1	1	1	*	*	*	*
L	PIPE COMB BLR	1084138	*	*	*	*	*	1	1	1	1
M	COVER, FLUE OR VENT	1096961	1	1	1	1	1	1	1	1	1
N	SHIELD, BURNER TOP	1084200	1	*	*	*	*	*	*	*	*
N	SHIELD, BURNER TOP	1084202	*	1	1	1	1	1	*	1	*
N	SHIELD, BURNER TOP	1084204	*	*	*	*	*	*	1	*	*
N	SHIELD, BURNER TOP	1084206	*	*	*	*	*	*	*	*	1
NN	SHIELD, BURNER BOTTOM	1084201	1	*	*	*	*	*	*	*	*
NN	SHIELD, BURNER BOTTOM	1084203	*	1	1	1	1	1	*	1	*
NN	SHIELD, BURNER BOTTOM	1084205	*	*	*	*	*	*	1	*	*
NN	SHIELD, BURNER BOTTOM	1084207	*	*	*	*	*	*	*	*	1
P	PANEL, REAR	1174309	1	1	1	1	1	*	*	*	*
P	PANEL, REAR	1114532	*	*	*	*	*	1	1	1	1
R	COVER, DUCTS	1114525	2	2	2	2	2	2	2	2	2
S	PANEL, ACCESS CONTROL BOX	1097977	1	1	1	1	1	*	*	*	*
S	PANEL, ACCESS CONTROL BOX	1084150	*	*	*	*	*	1	1	1	1
T	POST, CORNER	1174310	1	1	1	1	1	*	*	*	*
T	POST, CORNER	1114538	*	*	*	*	*	1	1	1	1
U	PANEL, ACCESS BLOWER	1114536	1	1	1	1	1	1	1	1	1
W	BRACKET, SUPPORT (MANIFOLD)	1011820	2	2	2	2	2	2	2	2	2
ZZ	PAN, DRAIN (EVAPORATOR)	1172243	1	1	1	1	1	1	1	1	1
PARTS NOT SHOWN											
)	(HARNESS, WIRE (DUAL CAPACITY ADAPTER)	1174320	*	*	*	*	*	1	1	1	1
)	(HARNESS, WIRE (DUAL CAPACITY YAC)	1174319	*	*	*	*	*	1	1	1	1
)	(HARNESS, WIRE (SINGLE CAPACITY YAC)	1174311	1	1	1	1	1	*	*	*	*
)	(HARNESS, WIRE (ECONOMIZER)	1174903	1	1	1	1	1	1	1	1	1
)	(CONV KIT NAT > LP PGF 100-140	1173855	*	*	1	*	1	*	1	1	1
)	(CONV KIT NAT > LP PGF 0-4000'	1173857	*	*	1	*	1	*	1	1	1
)	(CONV KIT NAT > LP PGF 4001-9000'	1173859	*	*	1	*	1	*	1	1	1
)	(CONV KIT NAT > LP PGF 0-4000'	1173857	1	1	*	1	*	1	*	*	*
)	(CONV KIT NAT > LP PGF 4001-9000'	1173859	1	1	*	1	*	1	*	*	*
)	(CONV KIT NAT > LP PGF 9001-10,000'	1173861	1	1	*	1	*	1	*	*	*
)	(CONV KIT LP > NAT	1173863	1	1	*	1	*	1	*	*	*
)	(CONV KIT LP > NAT	1173865	*	*	1	*	1	*	1	1	1

PGF3 3 PHASE PARTS LIST

KEY NO.	DESCRIPTION	FAST PART NO.	PGF336060L00A1	PGF336080L00A1	PGF336100L00A1	PGF342080L00A1	PGF342100L00A1	PGF348080L00A1	PGF348120L00A1	PGF354100L00A1	PGF354140L00A1
001	COMP	1096757	1	1	1	*	*	*	*	*	*
001	COMP	1085621	*	*	*	1	1	*	*	*	*
001	COMP	ZRS43K4TFD830	*	*	*	*	*	1	1	*	*
001	COMP	ZRS52K4TFD830	*	*	*	*	*	*	*	1	1
002	MTR, COND FAN	1175525	1	1	1	1	1	1	1	*	*
002	MTR, COND FAN	1175528	*	*	*	*	*	*	*	1	1
003	FAN, COND	1173706	1	1	1	1	1	1	1	*	*
003	FAN, COND	1173707	*	*	*	*	*	*	*	1	1
004	COIL, EVAP	1174223	1	1	1	*	*	*	*	*	*
004	COIL, EVAP	1174224	*	*	*	1	1	*	*	*	*
004	COIL, EVAP	1174225	*	*	*	*	*	1	1	*	*
004	COIL, EVAP	1174226	*	*	*	*	*	*	*	1	1
005	FLOW RESTRICTER	1173870	1	1	1	*	*	*	*	*	*
006	TAILPIECE KIT	1174325	1	1	1	*	*	*	*	*	*
007	DISTRIBUTOR	1174242	1	1	1	*	*	*	*	*	*
007	DISTRIBUTOR	1174243	*	*	*	1	1	1	1	*	*
007	DISTRIBUTOR	1174244	*	*	*	*	*	*	*	1	1
008	BAFFLE, GAS	1014019	3	4	4	4	4	4	5	5	6
009	KIT, MTR MOUNTING	1174295	1	1	1	1	1	*	*	*	*
009	KIT, MTR MOUNTING	1114377	*	*	*	*	*	1	1	1	1
10	WHEEL, BLOWER	1171742	1	1	1	1	1	*	*	*	*
10	WHEEL, BLOWER	1097529	*	*	*	*	*	1	1	1	1
11	MOTOR, BLOWER	1173817	1	1	1	1	1	*	*	*	*
11	MOTOR, BLOWER	1173819	*	*	*	*	*	1	1	*	*
11	MOTOR, BLOWER	1173820	*	*	*	*	*	*	*	1	1
12	CAPACITOR	1172149	1	1	1	1	1	1	1	*	*
12	CAPACITOR	1171807	*	*	*	*	*	*	*	1	1
13	CONTACTOR	1171160	1	1	1	1	1	1	1	1	1
14	CIRCUIT BREAKER	1171114	*	*	*	*	*	1	1	1	1
15	TRANSFORMER	1175310	1	1	1	1	1	*	*	*	*
15	TRANSFORMER	1171496	*	*	*	*	*	1	1	1	1
16	CONTROL BOARD	1173823	1	1	1	1	1	*	*	*	*
16	CONTROL BOARD	1174144	*	*	*	*	*	1	1	1	1
17	COIL, COND	1174248	1	1	1	*	*	*	*	*	*
17	COIL, COND	1174249	*	*	*	1	1	*	*	*	*
17	COIL, COND	1174250	*	*	*	*	*	1	1	*	*
17	COIL, COND	1174251	*	*	*	*	*	*	*	1	1
18	PLUG ASY	1173826	1	1	1	1	1	1	1	1	1
19	PLUG ASY	1173827	*	*	*	*	*	1	1	1	1
20	VALVE, SERVICE	1083939	1	1	1	1	1	1	1	1	1
23	HEATER, CRANKCASE	1175527	1	1	1	1	1	1	1	1	1
25	SWITCH, PRESSURE	1173712	*	*	*	*	*	1	1	1	1
26	VALVE EXPANSION	1173833	*	*	*	1	1	*	*	*	*
26	VALVE EXPANSION	1173834	*	*	*	*	*	1	1	*	*
26	VALVE EXPANSION	1173835	*	*	*	*	*	*	*	1	1
27	SWITCH, LIMIT	1095242	1	1	1	1	1	*	*	*	*
27	SWITCH, LIMIT	1065207	*	*	*	*	*	1	*	*	*
27	SWITCH, LIMIT	1065638	*	*	*	*	*	*	1	1	*

PGF3 3 PHASE PARTS LIST (continued)

KEY NO.	DESCRIPTION	FAST PART NO.	PGF336060L00A1	PGF336080L00A1	PGF336100L00A1	PGF342080L00A1	PGF342100L00A1	PGF348080L00A1	PGF348120L00A1	PGF354100L00A1	PGF354140L00A1
27	SWITCH, LIMIT	1065702	*	*	*	*	*	*	*	*	1
29	IGNITER ASY	1173831	1	1	1	1	1	1	1	1	1
30	TUBE, VACUUM	1013088	1	1	1	1	1	1	1	1	1
31	BURNER ASY	1008724	1	*	*	*	*	*	*	*	*
31	BURNER ASY	1008725	*	1	1	1	1	1	*	*	*
31	BURNER ASY	1008726	*	*	*	*	*	*	1	1	*
31	BURNER ASY	1009179	*	*	*	*	*	*	*	*	1
32	SWITCH, ROLLOUT	1013102	1	1	1	1	1	1	1	1	1
33	IGNITER ASY	1173828	1	1	1	1	1	1	1	1	1
34	SENSOR	1173830	1	1	1	1	1	1	1	1	1
35	VALVE, GAS	1173845	1	1	1	1	1	1	1	1	1
36	ORIFICE, SPUD	1011352	3	4	*	4	*	4	*	*	*
36	ORIFICE, SPUD	1096942	*	*	4	*	4	*	*	5	*
36	ORIFICE, SPUD	1011351	*	*	*	*	*	*	5	*	6
37	MANIFOLD ASY	1084113	1	*	*	*	*	*	*	*	*
37	MANIFOLD ASY	1084114	*	1	1	1	1	1	*	*	*
37	MANIFOLD ASY	1084115	*	*	*	*	*	*	1	1	*
37	MANIFOLD ASY	1084116	*	*	*	*	*	*	*	*	1
38	SWITCH, TEMP	1173822	1	1	1	1	1	1	1	1	1
39	BOX, COLLECTOR	1011046	1	*	*	*	*	*	*	*	*
39	BOX, COLLECTOR	1172352	*	1	*	1	*	1	*	*	*
39	BOX, COLLECTOR	1011052	*	*	1	*	1	*	*	1	*
39	BOX, COLLECTOR	1011055	*	*	*	*	*	*	1	*	*
39	BOX, COLLECTOR	1011057	*	*	*	*	*	*	*	*	1
40	GASKET	1093661	1	*	*	*	*	*	*	*	*
40	GASKET	1093662	*	1	1	1	1	1	*	1	*
40	GASKET	1093663	*	*	*	*	*	*	1	*	1
41	HEAT EXCHANGER	1012407	1	*	*	*	*	*	*	*	*
41	HEAT EXCHANGER	1011364	*	1	1	1	1	*	*	*	*
41	HEAT EXCHANGER	1011363	*	*	*	*	*	1	*	*	*
41	HEAT EXCHANGER	1012408	*	*	*	*	*	*	1	1	*
41	HEAT EXCHANGER	1011366	*	*	*	*	*	*	*	*	1
42	PANEL ASY	1012410	1	*	*	*	*	*	*	*	*
42	PANEL ASY	1008071	*	*	*	*	*	1	*	*	*
42	PANEL ASY	1008072	*	1	1	1	1	*	*	*	*
42	PANEL ASY	1012411	*	*	*	*	*	*	1	1	*
42	PANEL ASY	1008074	*	*	*	*	*	*	*	*	1
43	GASKET	2480905	2	*	*	*	*	*	*	*	*
43	GASKET	2480906	*	2	2	2	2	2	*	*	*
43	GASKET	2480907	*	*	*	*	*	*	2	2	*
43	GASKET	2480908	*	*	*	*	*	*	*	*	2
44	GASKET	1110691	1	1	1	1	1	1	1	1	1
45	BLOWER ASY	1110008	1	1	1	1	1	1	1	1	1
46	CONTROL BOARD	1173838	1	1	1	1	1	1	1	1	1
56	SWITCH	1172197	1	1	1	1	1	1	1	1	1
57	RAIL, BASE	1098870	2	2	2	2	2	2	2	2	2
58	RAIL, BASE	1098868	2	2	2	2	2	*	*	*	*
58	RAIL, BASE	1098869	*	*	*	*	*	2	2	2	2

PGF3 3 PHASE PARTS LIST (continued)

KEY NO.	DESCRIPTION	FAST PART NO.										
			PGF336060L00A1	PGF336080L00A1	PGF336100L00A1	PGF342080L00A1	PGF342100L00A1	PGF348080L00A1	PGF348120L00A1	PGF354100L00A1	PGF354140L00A1	
60	TRANSFORMER	1175526	1	1	1	1	1	1	1	1	1	
A	PANEL, TOP	1174741	1	1	1	1	1	*	*	*	*	
A	PANEL, TOP	1174460	*	*	*	*	*	1	1	1	1	
B	GRILLE, OUTLET	1173832	1	1	1	1	1	1	1	1	1	
C	GRILLE ASY	1097528	1	1	1	1	1	1	1	1	1	
F	NUT, CAP	1172740	4	4	4	4	4	4	4	4	4	
G	PANEL ASY	1111015	1	1	1	1	1	1	1	1	1	
H	PLATE	1085473	1	1	1	1	1	1	1	1	1	
J	HOUSING, BLOWER	1174167	1	1	1	1	1	*	*	*	*	
J	HOUSING, BLOWER	1099242	*	*	*	*	*	1	1	1	1	
L	PIPE, ELBOW	1096959	1	1	1	1	1	*	*	*	*	
L	PIPE, ELBOW	1084138	*	*	*	*	*	1	1	1	1	
M	COVER	1096970	1	1	1	1	1	1	1	1	1	
N	SHIELD	1084200	1	*	*	*	*	*	*	*	*	
N	SHIELD	1084202	*	1	1	1	1	1	*	*	*	
N	SHIELD	1084204	*	*	*	*	*	*	1	1	*	
N	SHIELD	1084206	*	*	*	*	*	*	*	*	1	
NN	SHIELD	1084201	1	*	*	*	*	*	*	*	*	
NN	SHIELD	1084203	*	1	1	1	1	1	*	*	*	
NN	SHIELD	1084205	*	*	*	*	*	*	1	1	*	
NN	SHIELD	1084207	*	*	*	*	*	*	*	*	1	
P	COVER ASY	1114525	2	2	2	2	2	2	2	2	2	
R	PANEL ASY	1174309	1	1	1	1	1	*	*	*	*	
R	PANEL ASY	1114532	*	*	*	*	*	1	1	1	1	
S	PANEL ASY	1097977	1	1	1	1	1	*	*	*	*	
S	PANEL ASY	1084150	*	*	*	*	*	1	1	1	1	
T	PANEL ASY	1174310	1	1	1	1	1	*	*	*	*	
T	PANEL ASY	1114538	*	*	*	*	*	1	1	1	1	
U	PANEL ASY	1114536	1	1	1	1	1	1	1	1	1	
W	BRACKET, SUPPORT	1011820	2	2	2	2	2	2	2	2	2	
ZZ	PAN, DRAIN	1172243	1	1	1	1	1	1	1	1	1	
PARTS NOT SHOWN												
)	HARNESS ASY	1175529	1	1	1	1	1	1	1	1	1	
)	HARNESS ASY	1174320	*	*	*	*	*	1	1	1	1	
)	HARNESS ASY	1174319	*	*	*	*	*	1	1	1	1	
)	HARNESS ASY	1174311	1	1	1	1	1	*	*	*	*	
)	HARNESS ASY	1174903	1	1	1	*	*	*	*	1	1	
)	CONV KIT NAT > LP	1173855	*	*	1	*	1	*	1	1	1	
)	CONV KIT NAT > LP	1173857	*	*	1	*	1	*	1	1	1	
)	CONV KIT NAT > LP	1173859	*	*	1	*	1	*	1	1	1	
)	CONV KIT NAT > LP	1173857	1	1	*	1	*	1	*	*	*	
)	CONV KIT NAT > LP	1173859	1	1	*	1	*	1	*	*	*	
)	CONV KIT NAT > LP	1173861	1	1	*	1	*	1	*	*	*	
)	CONV KIT LP > NAT	1173863	1	1	*	1	*	1	*	*	*	
)	CONV KIT LP > NAT	1173865	*	*	1	*	1	*	1	1	1	

PGF3 3 PHASE PARTS LIST

KEY NO.	DESCRIPTION	FAST PART NO.	PGF336060L01A1	PGF336080L01A1	PGF336100L01A1	PGF342080L01A1	PGF342100L01A1	PGF348080L01A1	PGF348120L01A1	PGF354100L01A1	PGF354140L01A1
001	COMP	1096757	1	1	1	*	*	*	*	*	*
001	COMP	1085621	*	*	*	1	1	*	*	*	*
001	COMP	ZRS43K4TFD830	*	*	*	*	*	1	1	*	*
001	COMP	ZRS52K4TFD830	*	*	*	*	*	*	*	1	1
002	MTR, COND FAN	1175525	1	1	1	1	1	1	1	*	*
002	MTR, COND FAN	1175528	*	*	*	*	*	*	*	1	1
003	FAN, COND	1173706	1	1	1	1	1	1	1	*	*
003	FAN, COND	1173707	*	*	*	*	*	*	*	1	1
004	COIL, EVAP	1174223	1	1	1	*	*	*	*	*	*
004	COIL, EVAP	1174224	*	*	*	1	1	*	*	*	*
004	COIL, EVAP	1174225	*	*	*	*	*	1	1	*	*
004	COIL, EVAP	1174226	*	*	*	*	*	*	*	1	1
005	FLOW RESTRICTER	1173870	1	1	1	*	*	*	*	*	*
006	TAILPIECE KIT	1174325	1	1	1	*	*	*	*	*	*
007	DISTRIBUTOR	1174242	1	1	1	*	*	*	*	*	*
007	DISTRIBUTOR	1174243	*	*	*	1	1	1	1	*	*
007	DISTRIBUTOR	1174244	*	*	*	*	*	*	*	1	1
008	BAFFLE, GAS	1014019	3	4	4	4	4	4	5	5	6
009	KIT, MTR MOUNTING	1174295	1	1	1	1	1	*	*	*	*
009	KIT, MTR MOUNTING	1114377	*	*	*	*	*	1	1	1	1
10	WHEEL, BLOWER	1171742	1	1	1	1	1	*	*	*	*
10	WHEEL, BLOWER	1097529	*	*	*	*	*	1	1	1	1
11	MOTOR, BLOWER	1173817	1	1	1	1	1	*	*	*	*
11	MOTOR, BLOWER	1173819	*	*	*	*	*	1	1	*	*
11	MOTOR, BLOWER	1173820	*	*	*	*	*	*	*	1	1
12	CAPACITOR	1172149	1	1	1	1	1	1	1	*	*
12	CAPACITOR	1171807	*	*	*	*	*	*	*	1	1
13	CONTACTOR	1171160	1	1	1	1	1	1	1	1	1
14	CIRCUIT BREAKER	1171114	*	*	*	*	*	1	1	1	1
15	TRANSFORMER	1175310	1	1	1	1	1	*	*	*	*
15	TRANSFORMER	1171496	*	*	*	*	*	1	1	1	1
16	CONTROL BOARD	1173823	1	1	1	1	1	*	*	*	*
16	CONTROL BOARD	1174144	*	*	*	*	*	1	1	1	1
17	COIL, COND	1174248	1	1	1	*	*	*	*	*	*
17	COIL, COND	1174249	*	*	*	1	1	*	*	*	*
17	COIL, COND	1174250	*	*	*	*	*	1	1	*	*
17	COIL, COND	1174251	*	*	*	*	*	*	*	1	1
18	PLUG ASY	1173826	1	1	1	1	1	1	1	1	1
19	PLUG ASY	1173827	*	*	*	*	*	1	1	1	1
20	VALVE, SERVICE	1083939	1	1	1	1	1	1	1	1	1
23	HEATER, CRANKCASE	1175527	1	1	1	1	1	1	1	1	1
25	SWITCH, PRESSURE	1173712	*	*	*	*	*	1	1	1	1
26	VALVE EXPANSION	1173833	*	*	*	1	1	*	*	*	*
26	VALVE EXPANSION	1173834	*	*	*	*	*	1	1	*	*
26	VALVE EXPANSION	1173835	*	*	*	*	*	*	*	1	1
27	SWITCH, LIMIT	1095242	1	1	1	1	1	*	*	*	*
27	SWITCH, LIMIT	1065207	*	*	*	*	*	1	*	*	*
27	SWITCH, LIMIT	1065638	*	*	*	*	*	*	1	1	*

PGF3 3 PHASE PARTS LIST (continued)

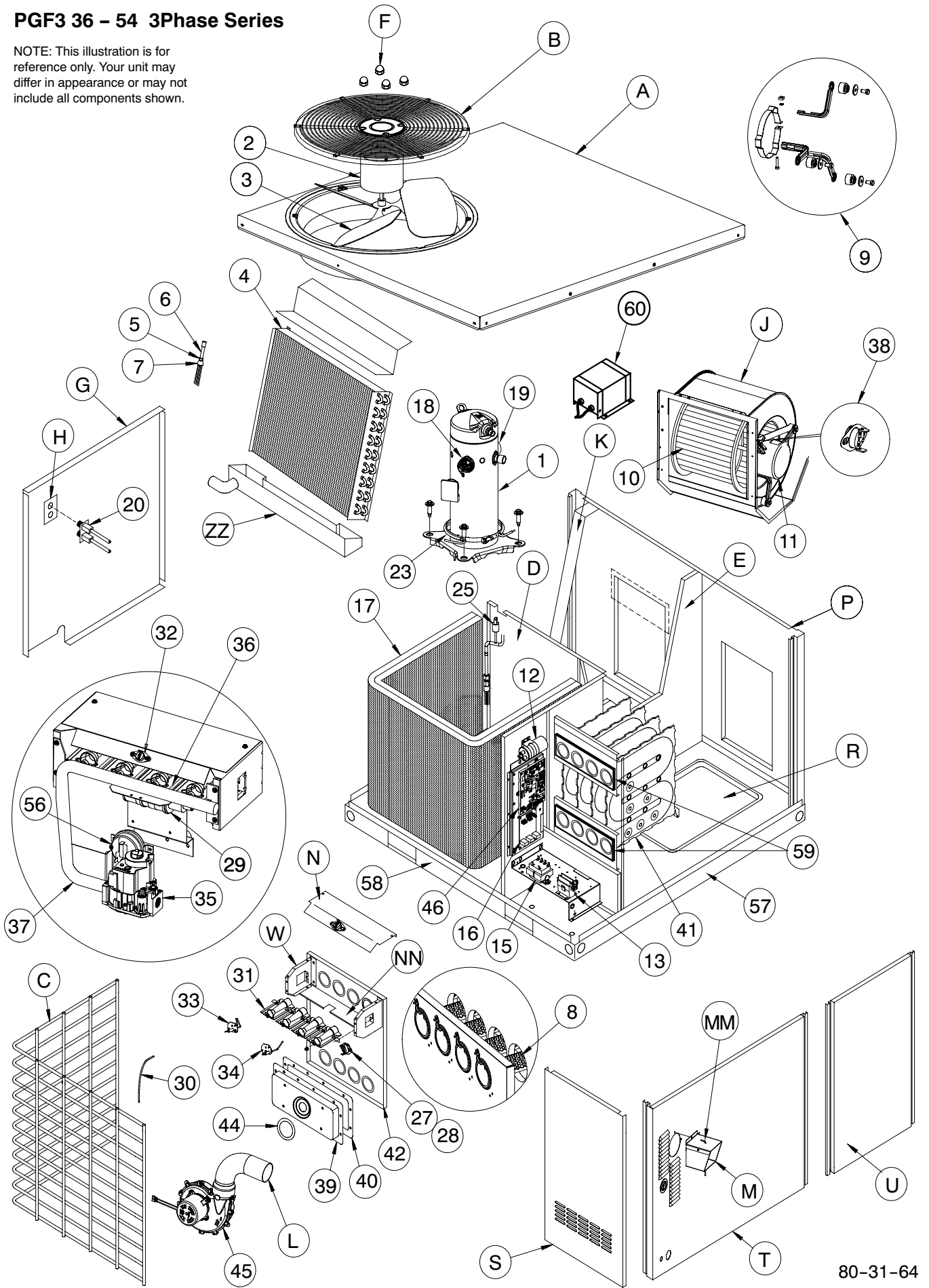
KEY NO.	DESCRIPTION	FAST PART NO.	PGF336060L01A1	PGF336080L01A1	PGF336100L01A1	PGF342080L01A1	PGF342100L01A1	PGF348080L01A1	PGF348120L01A1	PGF354100L01A1	PGF354140L01A1
27	SWITCH, LIMIT	1065702	*	*	*	*	*	*	*	*	1
29	IGNITER ASY	1173831	1	1	1	1	1	1	1	1	1
30	TUBE, VACUUM	1013088	1	1	1	1	1	1	1	1	1
31	BURNER ASY	1008724	1	*	*	*	*	*	*	*	*
31	BURNER ASY	1008725	*	1	1	1	1	1	*	*	*
31	BURNER ASY	1008726	*	*	*	*	*	*	1	1	*
31	BURNER ASY	1009179	*	*	*	*	*	*	*	*	1
32	SWITCH, ROLLOUT	1013102	1	1	1	1	1	1	1	1	1
33	IGNITER ASY	1173828	1	1	1	1	1	1	1	1	1
34	SENSOR	1173830	1	1	1	1	1	1	1	1	1
35	VALVE, GAS	1173845	1	1	1	1	1	1	1	1	1
36	ORIFICE, SPUD	1011352	3	4	*	4	*	4	*	*	*
36	ORIFICE, SPUD	1096942	*	*	4	*	4	*	*	5	*
36	ORIFICE, SPUD	1011351	*	*	*	*	*	*	5	*	6
37	MANIFOLD ASY	1084113	1	*	*	*	*	*	*	*	*
37	MANIFOLD ASY	1084114	*	1	1	1	1	1	*	*	*
37	MANIFOLD ASY	1084115	*	*	*	*	*	*	1	1	*
37	MANIFOLD ASY	1084116	*	*	*	*	*	*	*	*	1
38	SWITCH, TEMP	1173822	1	1	1	1	1	1	1	1	1
39	BOX, COLLECTOR	1011046	1	*	*	*	*	*	*	*	*
39	BOX, COLLECTOR	1172352	*	1	*	1	*	1	*	*	*
39	BOX, COLLECTOR	1011052	*	*	1	*	1	*	*	1	*
39	BOX, COLLECTOR	1011055	*	*	*	*	*	*	1	*	*
39	BOX, COLLECTOR	1011057	*	*	*	*	*	*	*	*	1
40	GASKET	1093661	1	*	*	*	*	*	*	*	*
40	GASKET	1093662	*	1	1	1	1	1	*	1	*
40	GASKET	1093663	*	*	*	*	*	*	1	*	1
41	HEAT EXCHANGER	1012407	1	*	*	*	*	*	*	*	*
41	HEAT EXCHANGER	1011364	*	1	1	1	1	*	*	*	*
41	HEAT EXCHANGER	1011363	*	*	*	*	*	1	*	*	*
41	HEAT EXCHANGER	1012408	*	*	*	*	*	*	1	1	*
41	HEAT EXCHANGER	1011366	*	*	*	*	*	*	*	*	1
42	PANEL ASY	1012410	1	*	*	*	*	*	*	*	*
42	PANEL ASY	1008071	*	*	*	*	*	1	*	*	*
42	PANEL ASY	1008072	*	1	1	1	1	*	*	*	*
42	PANEL ASY	1012411	*	*	*	*	*	*	1	1	*
42	PANEL ASY	1008074	*	*	*	*	*	*	*	*	1
43	GASKET	2480905	2	*	*	*	*	*	*	*	*
43	GASKET	2480906	*	2	2	2	2	2	*	*	*
43	GASKET	2480907	*	*	*	*	*	*	2	2	*
43	GASKET	2480908	*	*	*	*	*	*	*	*	2
44	GASKET	1110691	1	1	1	1	1	1	1	1	1
45	BLOWER ASY	1110008	1	1	1	1	1	1	1	1	1
46	CONTROL BOARD	1173838	1	1	1	1	1	1	1	1	1
56	SWITCH	1172197	1	1	1	1	1	1	1	1	1
57	RAIL, BASE	1098870	2	2	2	2	2	2	2	2	2
58	RAIL, BASE	1098868	2	2	2	2	2	*	*	*	*
58	RAIL, BASE	1098869	*	*	*	*	*	2	2	2	2

PGF3 3 PHASE PARTS LIST (continued)

KEY NO.	DESCRIPTION	FAST PART NO.										
			PGF336060L01A1	PGF336080L01A1	PGF336100L01A1	PGF342080L01A1	PGF342100L01A1	PGF348080L01A1	PGF348120L01A1	PGF354100L01A1	PGF354140L01A1	
60	TRANSFORMER	1175526	1	1	1	1	1	1	1	1	1	
A	PANEL, TOP	1174741	1	1	1	1	1	*	*	*	*	
A	PANEL, TOP	1174460	*	*	*	*	*	1	1	1	1	
B	GRILLE, OUTLET	1173832	1	1	1	1	1	1	1	1	1	
C	GRILLE ASY	1097528	1	1	1	1	1	1	1	1	1	
F	NUT, CAP	1172740	4	4	4	4	4	4	4	4	4	
G	PANEL ASY	1111015	1	1	1	1	1	1	1	1	1	
H	PLATE	1085473	1	1	1	1	1	1	1	1	1	
J	HOUSING, BLOWER	1174167	1	1	1	1	1	*	*	*	*	
J	HOUSING, BLOWER	1099242	*	*	*	*	*	1	1	1	1	
L	PIPE, ELBOW	1096959	1	1	1	1	1	*	*	*	*	
L	PIPE, ELBOW	1084138	*	*	*	*	*	1	1	1	1	
M	COVER	1096970	1	1	1	1	1	1	1	1	1	
N	SHIELD	1084200	1	*	*	*	*	*	*	*	*	
N	SHIELD	1084202	*	1	1	1	1	1	*	*	*	
N	SHIELD	1084204	*	*	*	*	*	*	1	1	*	
N	SHIELD	1084206	*	*	*	*	*	*	*	*	1	
NN	SHIELD	1084201	1	*	*	*	*	*	*	*	*	
NN	SHIELD	1084203	*	1	1	1	1	1	*	*	*	
NN	SHIELD	1084205	*	*	*	*	*	*	1	1	*	
NN	SHIELD	1084207	*	*	*	*	*	*	*	*	1	
P	COVER ASY	1114525	2	2	2	2	2	2	2	2	2	
R	PANEL ASY	1174309	1	1	1	1	1	*	*	*	*	
R	PANEL ASY	1114532	*	*	*	*	*	1	1	1	1	
S	PANEL ASY	1097977	1	1	1	1	1	*	*	*	*	
S	PANEL ASY	1084150	*	*	*	*	*	1	1	1	1	
T	PANEL ASY	1174310	1	1	1	1	1	*	*	*	*	
T	PANEL ASY	1114538	*	*	*	*	*	1	1	1	1	
U	PANEL ASY	1114536	1	1	1	1	1	1	1	1	1	
W	BRACKET, SUPPORT	1011820	2	2	2	2	2	2	2	2	2	
ZZ	PAN, DRAIN	1172243	1	1	1	1	1	1	1	1	1	
PARTS NOT SHOWN												
)	HARNESS ASY	1174320	*	*	*	*	*	1	1	1	1	
)	HARNESS ASY	1175529	1	1	1	1	1	1	1	1	1	
)	HARNESS ASY	1174319	*	*	*	*	*	1	1	1	1	
)	HARNESS ASY	1174311	1	1	1	1	1	*	*	*	*	
)	HARNESS ASY	1174903	1	1	1	*	*	*	*	1	1	
)	CONV KIT NAT > LP	1173855	*	*	1	*	1	*	1	1	1	
)	CONV KIT NAT > LP	1173857	*	*	1	*	1	*	1	1	1	
)	CONV KIT NAT > LP	1173859	*	*	1	*	1	*	1	1	1	
)	CONV KIT NAT > LP	1173857	1	1	*	1	*	1	*	*	*	
)	CONV KIT NAT > LP	1173859	1	1	*	1	*	1	*	*	*	
)	CONV KIT NAT > LP	1173861	1	1	*	1	*	1	*	*	*	
)	CONV KIT LP > NAT	1173863	1	1	*	1	*	1	*	*	*	
)	CONV KIT LP > NAT	1173865	*	*	1	*	1	*	1	1	1	

PGF3 36 - 54 3Phase Series

NOTE: This illustration is for reference only. Your unit may differ in appearance or may not include all components shown.



80-31-64

Suction Line Temperature (°F)															
OD Temp. (°F)	Suction Line Pressure (PSIG)														
	52	54	56	59	61	64	67	70	73	76	79	82	85	89	92
45	51	55	60	64	69	-	-	-	-	-	-	-	-	-	-
55	-	-	53	57	62	66	70	-	-	-	-	-	-	-	-
65	-	-	-	-	53	57	62	66	71	75	-	-	-	-	-
75	-	-	-	-	-	-	-	56	61	66	71	76	-	-	-
85	-	-	-	-	-	-	-	-	53	58	63	67	72	-	-
95	-	-	-	-	-	-	-	-	-	50	54	58	62	66	-
105	-	-	-	-	-	-	-	-	-	-	50	53	57	60	64
115	-	-	-	-	-	-	-	-	-	-	49	52	55	58	61
125	-	-	-	-	-	-	-	-	-	-	-	50	53	56	59

Suction Line Temperature (°C)															
OD Temp. (°C)	Suction Line Pressure (kPa)														
	361	370	387	405	423	442	462	482	502	523	544	566	589	612	636
7	11	13	15	18	21	-	-	-	-	-	-	-	-	-	-
13	-	-	12	14	16	19	21	-	-	-	-	-	-	-	-
18	-	-	-	-	12	14	17	19	21	24	-	-	-	-	-
24	-	-	-	-	-	-	-	13	16	19	22	24	-	-	-
29	-	-	-	-	-	-	-	-	12	14	17	20	22	-	-
35	-	-	-	-	-	-	-	-	-	10	12	14	17	19	-
41	-	-	-	-	-	-	-	-	-	-	10	12	14	16	18
46	-	-	-	-	-	-	-	-	-	-	9	11	13	14	16
52	-	-	-	-	-	-	-	-	-	-	-	10	11	13	15

Charging Procedure

- 1- Measure Discharge line pressure by attaching a gauge to the service port.
- 2- Measure the Liquid line temperature by attaching a temperature sensing device to it.
- 3- Insulate the temperature sensing device so that the Outdoor Ambient doesn't affect the reading.
- 4- Refer to the required Subcooling in the table to find the required Subcooling based on the model size and the Outdoor Ambient temperature.
- 5- Interpolate if the Outdoor temperature lies in between the table values. Extrapolate if the temperature lies beyond the table range.
- 6- Find the Pressure Value corresponding to the measured Pressure on the Compressor Discharge line.
- 7- Read across from the Pressure reading to obtain the Liquid line temperature for a required Subcooling.
- 8- Add Charge if the measured temperature is higher than the liquid line temperature value in the table.
- 9- Add Charge using the service connection on the Suction line of the Compressor.

Model Size	Required Subcooling oF (°C)				
	Outdoor Ambient Temperature				
	75 (24)	82 (28)	85 (29)	95 (35)	105 (41)
042	22.5 (12.5)	22.1 (12.3)	22 (12.2)	21.6 (12)	21.1 (11.7)
048	26.1 (14.5)	26.8 (14.9)	27 (15)	28 (15.5)	28.9 (16)
060	17.8 (9.9)	18.9 (10.5)	19.3 (10.7)	20.8 (11.6)	22.3 (12.4)

Required Liquid Line Temperature for a Specific Subcooling (R-22)

Pressure (psig)	Required Subcooling (°F)						Pressure (kPa)	Required Subcooling (°C)					
	5	10	15	20	25	30		3	6	8	11	14	17
174	87	82	77	72	67	62	1200	31	28	25	22	19	17
181	88	83	78	73	68	63	1248	31	28	26	23	20	17
188	92	87	82	77	72	67	1296	33	31	28	25	22	19
195	95	90	85	80	75	70	1344	35	32	29	27	24	21
202	97	92	87	82	77	72	1393	36	33	31	28	25	22
209	100	95	90	85	80	75	1441	38	35	32	29	27	24
216	102	97	92	87	82	77	1489	39	36	33	31	28	25
223	104	99	94	89	84	79	1537	40	37	34	32	29	26
134	71	66	61	56	51	46	924	22	19	16	13	11	8
141	74	69	64	59	54	49	972	23	21	18	15	12	10
156	80	75	70	65	60	55	1075	27	24	21	19	16	13
163	83	78	73	68	63	58	1124	28	26	23	20	17	15
170	86	81	76	71	66	61	1172	30	27	24	22	19	16
177	89	84	79	74	69	64	1220	31	29	26	23	20	18
184	91	86	81	76	71	66	1268	33	30	27	24	22	19
191	94	89	84	79	74	69	1317	34	31	29	26	23	20
198	96	91	86	81	76	71	1365	36	33	30	27	24	22
205	98	93	88	83	78	73	1413	37	34	31	29	26	23
213	101	96	91	86	81	76	1468	38	36	33	30	27	24
221	104	99	94	89	84	79	1524	40	37	34	31	29	26
229	106	101	96	91	86	81	1579	41	38	36	33	30	27
237	108	103	98	93	88	83	1634	42	40	37	34	31	29
245	111	106	101	96	91	86	1689	44	41	38	35	33	30
253	113	108	103	98	93	88	1744	45	42	40	37	34	31
262	116	111	106	101	96	91	1806	46	44	41	38	35	33
271	118	113	108	103	98	93	1868	48	45	42	40	37	34
280	121	116	111	106	101	96	1930	49	46	44	41	38	35
289	123	118	113	108	103	98	1992	51	48	45	42	39	37
298	125	120	115	110	105	100	2054	52	49	46	44	41	38
307	128	123	118	113	108	103	2116	53	50	48	45	42	39
317	130	125	120	115	110	105	2185	54	52	49	46	43	41
327	132	127	122	117	112	107	2254	56	53	50	47	45	42
337	130	125	120	115	110	105	2323	54	52	49	46	43	41
347	137	132	127	122	117	112	2392	58	56	53	50	47	45
357	139	134	129	124	119	114	2461	60	57	54	51	49	46
367	142	137	132	127	122	117	2530	61	58	55	53	50	47

PGF3 36

OD Ambient (°F)	ID Airflow (SCFM)	1050					1200					1350				
		Entering Indoor Temperature • Degrees F, Wet Bulb														
		57	62	63 †	67	72	57	62	63 †	67	72	57	62	63 †	67	72
75	MBH†	33.2	34.4	35.0	37.9	41.7	34.8	35.5	36.0	38.9	42.7	36.2	36.4	36.7	39.7	43.6
	SHT‡	1.00	0.91	0.72	0.69	0.50	1.00	0.95	0.75	0.72	0.52	1.00	0.99	0.78	0.76	0.54
	Total Unit Amps (230•1ϕ60/230•3ϕ60)	10.3 / 6.7	10.4 / 6.8	10.4 / 6.8	10.5 / 6.9	10.6 / 6.9	10.8 / 7	10.8 / 7.1	10.9 / 7.1	11.1 / 7.2	11.1 / 7.3	11.1 / 7.2	11.1 / 7.2	11.1 / 7.3	11.4 / 7.4	11.5 / 7.5
	HI PR	321	322	323	329	338	323	323	324	330	339	328	328	326	333	341
	LO PR	129	130	132	142	155	132	132	133	143	157	139	140	137	147	161
85	MBH†	31.9	32.8	33.3	36.1	39.7	33.4	33.8	34.2	37.0	40.7	34.7	34.8	34.9	37.7	41.4
	SHT‡	1.00	0.93	0.73	0.71	0.51	1.00	0.97	0.77	0.74	0.53	1.00	1.00	0.80	0.78	0.55
	Total Unit Amps (230•1ϕ60/230•3ϕ60)	11.4 / 7.4	11.5 / 7.5	11.6 / 7.5	11.7 / 7.6	11.7 / 7.7	12 / 7.8	12 / 7.8	12.1 / 7.9	12.2 / 8	12.3 / 8.1	12.2 / 8	12.2 / 8	12.2 / 8	12.6 / 8.2	12.7 / 8.3
	HI PR	364	364	365	371	380	366	366	366	372	381	371	371	368	375	384
	LO PR	132	132	133	144	157	135	135	135	145	159	142	142	139	149	162
95	MBH†	30.5	31.1	31.5	34.2	37.7	32.0	32.0	32.3	35.0	38.6	33.2	33.2	33.0	35.7	39.2
	SHT‡	1.00	0.95	0.75	0.72	0.52	1.00	1.00	0.79	0.76	0.54	1.00	1.00	0.82	0.80	0.56
	Total Unit Amps (230•1ϕ60/230•3ϕ60)	12.6 / 8.2	12.7 / 8.3	12.8 / 8.3	13 / 8.5	13 / 8.5	13.2 / 8.6	13.2 / 8.6	13.2 / 8.6	13.5 / 8.8	13.6 / 8.9	13.5 / 8.8	13.5 / 8.8	13.5 / 8.8	13.8 / 9	14 / 9.1
	HI PR	411	411	411	418	427	413	413	412	419	428	418	418	415	421	430
	LO PR	134	135	135	145	159	137	138	136	147	160	145	145	140	151	164
105	MBH†	29.1	29.3	29.7	32.2	35.6	30.4	30.5	30.4	33.0	36.3	31.6	31.6	31.0	33.6	36.9
	SHT‡	1.00	0.98	0.77	0.74	0.53	1.00	1.00	0.81	0.78	0.55	1.00	1.00	0.85	0.82	0.57
	Total Unit Amps (230•1ϕ60/230•3ϕ60)	13.9 / 9.1	14 / 9.1	14.1 / 9.2	14.3 / 9.3	14.4 / 9.4	14.6 / 9.5	14.6 / 9.5	14.6 / 9.5	14.9 / 9.7	15 / 9.8	14.9 / 9.7	14.9 / 9.7	14.9 / 9.7	15.2 / 9.9	15.4 / 10
	HI PR	463	463	462	469	478	465	465	463	470	479	470	470	466	472	481
	LO PR	137	138	137	147	161	140	141	138	149	162	148	148	142	152	166
115	MBH†	27.6	27.6	27.8	30.2	33.3	28.8	28.9	28.4	30.8	34.0	29.9	29.9	28.9	31.4	34.6
	SHT‡	1.00	1.00	0.79	0.77	0.54	1.00	1.00	0.84	0.81	0.56	1.00	1.00	0.88	0.85	0.59
	Total Unit Amps (230•1ϕ60/230•3ϕ60)	15.4 / 10	15.4 / 10	15.5 / 10.1	15.7 / 10.2	15.9 / 10.4	16 / 10.4	16 / 10.4	16 / 10.4	16.3 / 10.7	16.5 / 10.8	16.3 / 10.7	16.4 / 10.7	16.4 / 10.7	16.7 / 10.9	16.9 / 11
	HI PR	519	519	518	524	533	521	521	519	525	533	526	526	521	528	536
	LO PR	140	141	138	149	163	143	144	140	150	164	151	151	143	154	167
Air Delivery in CFM • Dry Coil • No Filter (Add .05 Static Press for Wet Coil)																
Speed Tap		External Static Pressure (Inch Water Col)														
		0.1	0.2	0.3	0.4	0.5	0.6	0.7	0.8	0.9	1.0					
1		876	841	794	756	694	651	598	543	499	464					
2		1026	994	949	913	871	841	793	735	683	638					
3		1276	1242	1209	1179	1150	1117	1086	1045	998	946					
4		1630	1588	1526	1477	1415	1354	1287	1216	1145	1070					
5		*	*	*	*	*	*	*	*	*						

Notes: † Net Capacity (BTU/HR / 1000)
‡ Sensible Heat Ratio (Sensible Capacity / Net Capacity)
†† At 75°F entering dry bulb • Tennessee Valley Authority [TVA] rating conditions; all others at 80°F entering dry bulb.

50CU500248 • 3.0

PGF3 42

OD Ambient (°F)	ID Airflow (SCFM)	1225					1400					1575				
		Entering Indoor Temperature • Degrees F, Wet Bulb														
		57	62	63 †	67	72	57	62	63 †	67	72	57	62	63 †	67	72
75	MBH†	38.4	39.6	40.2	43.3	47.2	40.2	40.7	41.2	44.3	48.2	41.7	41.8	42.0	45.1	49.0
	SHT‡	0.98	0.90	0.72	0.69	0.50	0.98	0.95	0.75	0.72	0.52	0.98	0.98	0.78	0.76	0.54
	Total Unit Amps (230•1ϕ60/230•3ϕ60)	12 / 7.9	12.2 / 8	12.2 / 8	12.4 / 8.1	12.6 / 8.3	12.3 / 8.1	12.4 / 8.2	12.6 / 8.2	12.8 / 8.4	13 / 8.5	12.7 / 8.3	12.7 / 8.3	12.9 / 8.4	13.2 / 8.7	13.5 / 8.8
	HI PR	316	317	318	324	333	318	318	319	325	334	323	323	321	328	336
	LO PR	127	128	130	140	153	130	130	131	141	155	137	138	135	145	159
85	MBH†	37.0	37.8	38.4	41.3	45.0	38.7	38.8	39.3	42.2	45.9	40.1	40.2	40.0	42.9	46.6
	SHT‡	0.98	0.92	0.73	0.70	0.51	0.98	0.97	0.77	0.74	0.53	0.98	0.98	0.80	0.78	0.55
	Total Unit Amps (230•1ϕ60/230•3ϕ60)	13.4 / 8.8	13.5 / 8.9	13.6 / 8.9	13.8 / 9.1	14 / 9.2	13.7 / 9	13.7 / 9	13.9 / 9.1	14.2 / 9.3	14.4 / 9.5	14.1 / 9.3	14.1 / 9.3	14.1 / 9.3	14.6 / 9.6	14.9 / 9.8
	HI PR	359	359	360	366	375	361	361	361	367	376	366	366	363	370	379
	LO PR	130	130	131	142	155	133	133	133	143	157	140	140	137	147	160
95	MBH†	35.4	35.9	36.4	39.2	42.7	37.0	37.1	37.3	40.0	43.5	38.4	38.4	37.9	40.7	44.1
	SHT‡	0.98	0.95	0.75	0.72	0.52	0.98	0.98	0.78	0.76	0.54	0.98	0.98	0.82	0.80	0.56
	Total Unit Amps (230•1ϕ60/230•3ϕ60)	14.9 / 9.8	15.1 / 9.9	15.1 / 9.9	15.4 / 10.1	15.6 / 10.2	15.3 / 10	15.3 / 10	15.4 / 10.1	15.7 / 10.3	16 / 10.5	15.7 / 10.3	15.7 / 10.3	15.7 / 10.3	16.2 / 10.6	16.4 / 10.8
	HI PR	406	406	406	413	422	408	408	407	414	423	413	413	410	416	425
	LO PR	132	133	133	143	157	135	136	134	145	158	143	143	138	149	162
105	MBH†	33.8	34.0	34.4	37.0	40.2	35.3	35.3	35.1	37.7	41.0	36.5	36.5	35.7	38.3	41.5
	SHT‡	0.98	0.97	0.76	0.74	0.53	0.98	0.98	0.81	0.78	0.55	0.98	0.98	0.85	0.83	0.58
	Total Unit Amps (230•1ϕ60/230•3ϕ60)	16.6 / 10.9	16.7 / 10.9	16.8 / 11	17 / 11.2	17.3 / 11.3	17 / 11.1	17 / 11.1	17 / 11.1	17.4 / 11.4	17.7 / 11.6	17.4 / 11.4	17.4 / 11.4	17.4 / 11.4	17.8 / 11.7	18.1 / 11.9
	HI PR	458	458	457	464	473	460	460	458	465	474	465	465	461	467	476
	LO PR	135	136	135	145	159	138	139	136	147	160	146	146	140	150	164
115	MBH†	32.0	32.1	32.2	34.6	37.6	33.4	33.4	32.8	35.2	38.2	34.4	34.5	33.3	35.7	38.7
	SHT‡	0.98	0.98	0.79	0.76	0.54	0.98	0.98	0.83	0.81	0.57	0.98	0.98	0.88	0.86	0.59
	Total Unit Amps (230•1ϕ60/230•3ϕ60)	18.5 / 12.1	18.5 / 12.1	18.6 / 12.2	18.9 / 12.4	19.1 / 12.5	18.8 / 12.4	18.8 / 12.4	18.9 / 12.4	19.3 / 12.6	19.5 / 12.8	19.2 / 12.6	19.2 / 12.6	19.2 / 12.6	19.7 / 12.9	20 / 13.1
	HI PR	514	514	513	519	528	516	516	514	520	528	521	521	516	523	531
	LO PR	138	139	136	147	161	141	142	138	148	162	149	149	141	152	165
Air Delivery in CFM • Dry Coil • No Filter (Add .05 Static Press for Wet Coil)																
Speed Tap		External Static Pressure (Inch Water Col)														
		0.1	0.2	0.3	0.4	0.5	0.6	0.7	0.8	0.9	1.0					
1		973	900	853	797	749	702	642	581	529	476					
2		1028	969	924	861	838	789	731	680	617	562					
3		1302	1260	1219	1179	1138	1103	1060	1015	963	923					
4		1481	1448	1412	1374	1336	1298	1263	1226	1186	1143					
5		1569	1537	1500	1463	1423	1389	1353	1317	1276	1208					

Notes: † Net Capacity (BTU/HR / 1000)
‡ Sensible Heat Ratio (Sensible Capacity / Net Capacity)
†† At 75°F entering dry bulb • Tennessee Valley Authority [TVA] rating conditions; all others at 80°F entering dry bulb.

50CU500253 • 3.0

PGF3 48

OD Ambient (°F)	ID Airflow (SCFM)	1400										1600					1800				
		Entering Indoor Temperature • Degrees F. Wet Bulb																			
		57	62	63 †	67	72	57	62	63 †	67	72	57	62	63 †	67	72					
75	MBH†	42.8	44.1	44.9	48.4	53.1	44.9	45.4	46.0	49.6	54.3	46.7	46.7	46.9	50.5	55.3					
	S/T‡	0.98	0.91	0.72	0.69	0.50	0.98	0.95	0.75	0.73	0.52	0.98	0.98	0.79	0.76	0.54					
	Total Unit Amps (230v1ϕ0/230ϕ3ϕ0)	15.6 / 10	15.6 / 10	15.6 / 10	15.7 / 10.1	15.9 / 10.2	15.9 / 10.2	15.9 / 10.2	15.9 / 10.3	16.1 / 10.4	16.2 / 10.4	16.3 / 10.5	16.3 / 10.5	16.3 / 10.5	16.4 / 10.5	16.6 / 10.6					
	HI PR	323	324	325	331	340	325	325	326	332	341	330	330	328	335	343					
	LO PR	125	126	128	138	151	128	128	129	139	153	135	136	133	143	157					
85	MBH†	41.3	42.1	42.8	46.3	50.7	43.2	43.4	43.9	47.3	51.9	44.9	44.9	44.7	48.2	52.7					
	S/T‡	0.98	0.93	0.73	0.70	0.51	0.98	0.97	0.77	0.74	0.53	0.98	0.98	0.80	0.78	0.55					
	Total Unit Amps (230v1ϕ0/230ϕ3ϕ0)	17.1 / 10.9	17.1 / 11	17.1 / 11	17.2 / 11.1	17.4 / 11.1	17.4 / 11.2	17.4 / 11.2	17.4 / 11.3	17.5 / 11.3	17.7 / 11.3	17.8 / 11.4	17.8 / 11.4	17.8 / 11.4	17.9 / 11.5	18.1 / 11.6					
	HI PR	366	366	367	373	382	368	368	368	374	383	373	373	370	377	386					
	LO PR	128	128	129	140	153	131	131	131	141	155	138	138	135	145	158					
95	MBH†	39.6	40.1	40.7	44.0	48.3	41.5	41.5	41.7	45.0	49.3	43.0	43.1	42.5	45.8	50.1					
	S/T‡	0.98	0.95	0.75	0.72	0.51	0.98	0.98	0.79	0.76	0.54	0.98	0.98	0.82	0.80	0.56					
	Total Unit Amps (230v1ϕ0/230ϕ3ϕ0)	18.7 / 12	18.7 / 12	18.7 / 12	18.9 / 12.1	19 / 12.2	19.1 / 12.2	19.1 / 12.2	19.1 / 12.3	19.2 / 12.4	19.3 / 12.4	19.5 / 12.5	19.5 / 12.5	19.4 / 12.5	19.6 / 12.5	19.7 / 12.6					
	HI PR	413	413	413	420	429	415	415	414	421	430	420	420	417	423	432					
	LO PR	130	131	131	141	155	133	134	132	143	156	141	141	136	147	160					
105	MBH†	37.9	38.0	38.5	41.7	45.7	39.6	39.7	39.4	42.6	46.6	41.1	41.1	40.1	43.3	47.4					
	S/T‡	0.98	0.98	0.77	0.74	0.52	0.98	0.98	0.81	0.78	0.55	0.98	0.98	0.85	0.82	0.57					
	Total Unit Amps (230v1ϕ0/230ϕ3ϕ0)	20.5 / 13.1	20.5 / 13.1	20.5 / 13.2	20.6 / 13.3	20.8 / 13.4	20.9 / 13.4	20.9 / 13.4	20.8 / 13.4	21 / 13.5	21.1 / 13.5	21.3 / 13.6	21.3 / 13.6	21.2 / 13.6	21.3 / 13.7	21.5 / 13.8					
	HI PR	465	465	464	471	480	467	467	465	472	481	472	472	468	474	483					
	LO PR	133	134	133	143	157	136	137	134	145	158	144	144	138	148	162					
115	MBH†	36.0	36.1	36.2	39.1	43.0	37.6	37.7	37.0	39.9	43.6	38.9	39.0	37.6	40.6	44.4					
	S/T‡	0.98	0.98	0.79	0.76	0.53	0.98	0.98	0.83	0.81	0.56	0.98	0.98	0.88	0.85	0.59					
	Total Unit Amps (230v1ϕ0/230ϕ3ϕ0)	22.4 / 14.4	22.4 / 14.4	22.4 / 14.4	22.6 / 14.5	22.7 / 14.6	22.8 / 14.6	22.8 / 14.6	22.8 / 14.6	22.9 / 14.7	23.1 / 14.8	23.2 / 14.9	23.2 / 14.9	23.1 / 14.8	23.3 / 14.9	23.4 / 15					
	HI PR	521	521	520	526	535	523	523	521	527	535	528	528	523	530	538					
	LO PR	136	137	134	145	159	139	140	136	146	160	147	147	139	150	163					
Air Delivery in CFM • Dry Coil • No Filter (Add .05 Static Press for Wet Coil)																					
Speed Tap		External Static Pressure (Inch Water Col)																			
		0.1	0.2	0.3	0.4	0.5	0.6	0.7	0.8	0.9	1.0										
1		1173	1127	1085	1027	983	927	881	821	764	710										
2		1304	1256	1216	1167	1126	1077	1026	979	921	875										
3		1680	1650	1614	1578	1544	1507	1470	1427	1373	1289										
4		1831	1797	1763	1732	1696	1661	1621	1589	1446	1339										
5		2103	2051	2001	1942	1878	1809	1723	1632	1526	1388										

Notes: † Net Capacity (BTU/HR / 1000)
‡ Sensible Heat Ratio (Sensible Capacity / Net Capacity)
†† At 75°F entering dry bulb • Tennessee Valley Authority [TVA] rating conditions; all others at 80°F entering dry bulb.

50CU500255 • 3,0

PGF3 54

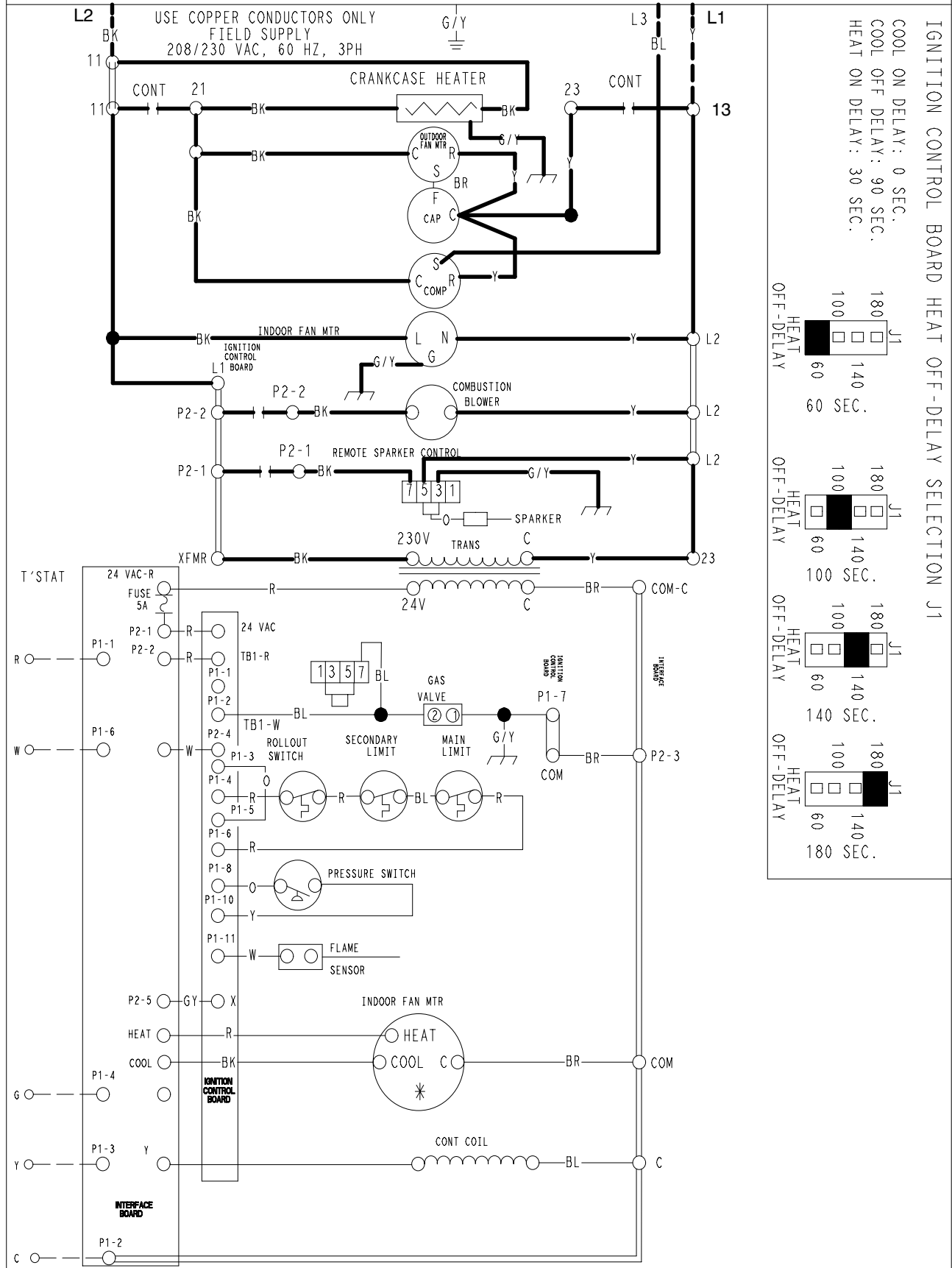
OD Ambient (°F)	ID Airflow (SCFM)	1750					2000					2250				
		Entering Indoor Temperature • Degrees F. Wet Bulb														
		57	62	63 †	67	72	57	62	63 †	67	72	57	62	63 †	67	72
75	MBH†	55.9	57.2	58.1	62.1	67.2	58.3	58.7	59.4	63.4	68.4	60.4	60.5	60.4	64.4	69.4
	S/T‡	0.96	0.90	0.71	0.68	0.49	0.96	0.95	0.74	0.72	0.51	0.96	0.96	0.78	0.76	0.53
	Total Unit Amps (230v1ϕ0/230ϕ3ϕ0)	19.1 / 12.6	19.4 / 12.9	19.6 / 13	20.3 / 13.4	21 / 13.9	19.5 / 12.9	19.8 / 13.1	20 / 13.2	20.7 / 13.7	21.4 / 14.2	19.9 / 13.2	20.1 / 13.3	20.3 / 13.5	21.1 / 14	21.9 / 14.5
	HI PR	325	326	327	333	342	327	327	328	334	343	332	332	330	337	345
	LO PR	125	126	128	138	151	128	128	129	139	153	135	136	133	143	157
85	MBH†	53.7	54.5	55.4	59.1	63.9	56.0	56.0	56.5	60.3	65.0	57.9	57.9	57.5	61.2	65.9
	S/T‡	0.96	0.92	0.72	0.70	0.50	0.96	0.96	0.76	0.74	0.52	0.96	0.96	0.80	0.78	0.55
	Total Unit Amps (230v1ϕ0/230ϕ3ϕ0)	21 / 13.9	21.3 / 14.1	21.5 / 14.3	22.2 / 14.7	22.9 / 15.1	21.4 / 14.2	21.6 / 14.3	21.9 / 14.5	22.6 / 14.9	23.3 / 15.4	21.9 / 14.5	21.9 / 14.5	22.2 / 14.7	23 / 15.2	23.8 / 15.7
	HI PR	368	368	369	375	384	370	370	370	376	385	375	375	372	379	388
	LO PR	128	128	129	140	153	131	131	131	141	155	138	138	135	145	158
95	MBH†	51.3	51.7	52.4	56.0	60.5	53.5	53.5	53.5	57.0	61.5	55.2	55.3	54.3	57.8	62.3
	S/T‡	0.96	0.95	0.74	0.72	0.51	0.96	0.96	0.78	0.76	0.53	0.96	0.96	0.82	0.80	0.56
	Total Unit Amps (230v1ϕ0/230ϕ3ϕ0)	23.7 / 15.4	23.5 / 15.5	23.7 / 15.7	24.3 / 16.1	25 / 16.6	23.7 / 15.7	23.7 / 15.7	24 / 15.9	24.7 / 16.4	25.4 / 16.8	24.1 / 16	24.1 / 16	24.3 / 16.1	25.1 / 16.6	25.9 / 17.2
	HI PR	415	415	415	422	431	417	417	416	423	432	422	422	419	425	434
	LO PR	130	131	131	141	155	133	134	132	143	156	141	141	136	147	160
105	MBH†	48.8	48.9	49.3	52.6	56.8	50.7	50.8	50.3	53.5	57.7	52.3	52.4	51.0	54.3	58.4
	S/T‡	0.96	0.96	0.76	0.74	0.52	0.96	0.96	0.80	0.79	0.55	0.96	0.96	0.85	0.83	0.57
	Total Unit Amps (230v1ϕ0/230ϕ3ϕ0)	25.7 / 17	25.8 / 17.1	26.1 / 17.3	26.7 / 17.7	27.4 / 18.1	26.1 / 17.3	26.2 / 17.3	26.4 / 17.5	27.1 / 18.4	27.8 / 18.4	26.6 / 17.6	26.6 / 17.6	26.8 / 17.6	27.5 / 18.2	28.3 / 18.7
	HI PR	467	467	466	473	482	469	469	467	474	483	474	474	470	476	485
	LO PR	133	134	133	143	157	136	137	134	145	158	144	144	138	148	162
115	MBH†	46.0	46.1	45.9	48.9	52.8	47.7	47.8	46.7	49.7	53.5	49.1	49.2	47.4	50.4	54.1
	S/T‡	0.96	0.96	0.78	0.77	0.53	0.96	0.96	0.83	0.82	0.56	0.96	0.96	0.88	0.87	0.59
	Total Unit Amps (230v1ϕ0/230ϕ3ϕ0)	28.4 / 18.8	28.5 / 18.8	28.7 / 19	29.3 / 19.4	30 / 19.9	28.8 / 19.1	28.9 / 19.1	28.9 / 19.2	29.7 / 19.7	30.5 / 20.2	29.3 / 19.4	29.3 / 19.4	29.3 / 19.4	30.1 / 19.9	30.9 / 20.5
	HI PR	523	523	522	528	537	525	525	523	529	537	530	530	525	532	540
	LO PR	136	137	134	145	159	139	140	136	146	160	147	147	139	150	163
Air Delivery in CFM • Dry Coil • No Filter (Add .05 Static Press for Wet Coil)																
Speed Tap		External Static Pressure (Inch Water Col)														
		0.1	0.2	0.3	0.4	0.5	0.6	0.7	0.8	0.9	1.0					
1		1300	1263	1214	1169	1117	1073	1026	975	926	862					
2		1369	1321	1283	1231	1177	1144	1095	1038	989	913					
3		1839	1807	1772	1735	1702	1667	1629	1590	1535	1460					
4		2091	2056	2023	1987	1935	1878	1811	1729	1640	1536					
5		2188	2140	2096	2039	1974	1905	1827	1745	1642	1537					

Notes: † Net Capacity (BTU/HR / 1000)
‡ Sensible Heat Ratio (Sensible Capacity / Net Capacity)
†† At 75°F entering dry bulb • Tennessee Valley Authority [TVA] rating conditions; all others at 80°F entering dry bulb.

50CU500257 • 3,0

LADDER WIRING DIAGRAM

DANGER: ELECTRICAL SHOCK HAZARD DISCONNECT POWER BEFORE SERVICING

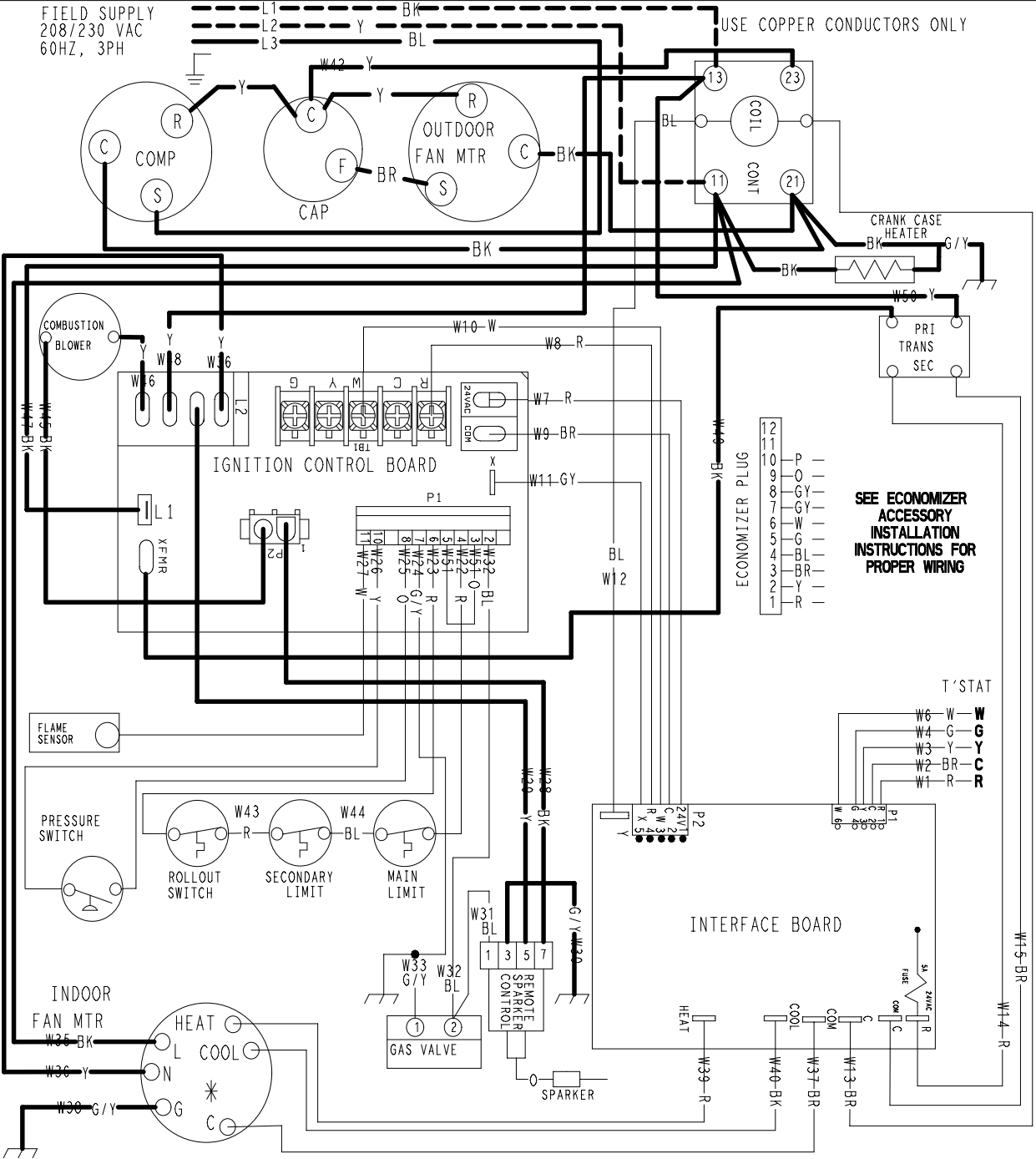


50CU500320

3.0

CONNECTION WIRING DIAGRAM

DANGER: ELECTRICAL SHOCK HAZARD DISCONNECT POWER BEFORE SERVICING



SEE ECONOMIZER ACCESSORY INSTALLATION INSTRUCTIONS FOR PROPER WIRING

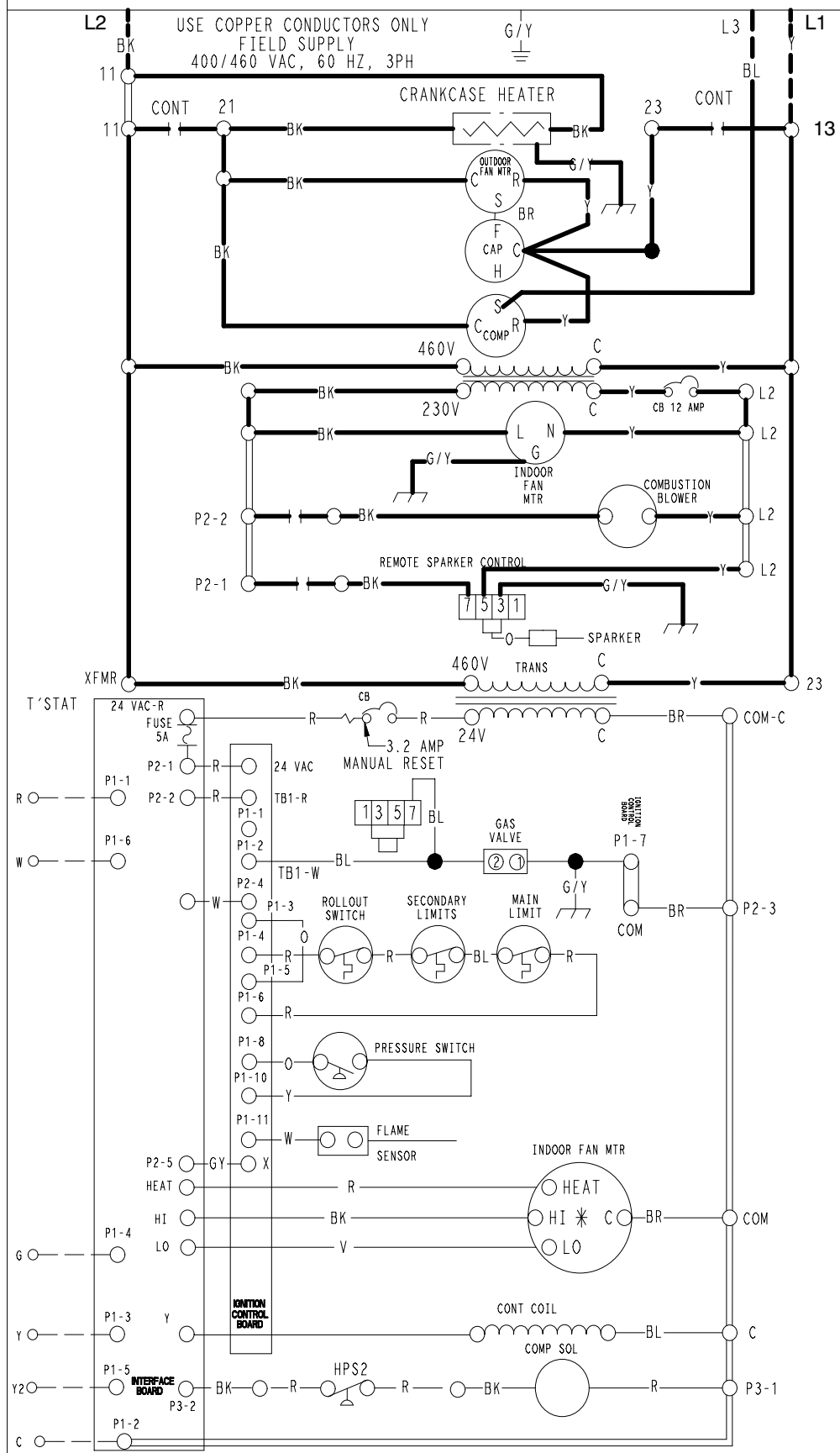
IF ANY OF THE ORIGINAL WIRE AS SUPPLIED WITH THE APPLIANCE MUST BE REPLACED, IT MUST BE REPLACED WITH TYPE AWM-105°C OR ITS EQUIVALENT.

* SEE INSTALLATION INSTRUCTIONS FOR PROPER HEATING AND COOLING CONNECTIONS FOR YOUR UNIT. INDOOR FAN MOTOR PLUGS- "Do Not Disconnect Under Load"

<p>— LINE VOLTAGE FACTORY</p> <p>- - - - - LOW VOLTAGE FIELD</p> <p>— LOW VOLTAGE FACTORY</p> <p>- - - - - LINE VOLTAGE FIELD</p> <p>— INTERNAL CIRCUIT BOARD WIRING</p>	<p>COLOR CODE :</p> <p>BLACK BK</p> <p>BLUE BL</p> <p>BROWN BR</p> <p>GRAY GY</p> <p>PINK P</p>	<p>GREEN G</p> <p>ORANGE O</p> <p>RED R</p> <p>VIOLET V</p>	<p>WHITE W</p> <p>YELLOW Y</p>
--	---	---	--------------------------------

LADDER WIRING DIAGRAM

DANGER: ELECTRICAL SHOCK HAZARD DISCONNECT POWER BEFORE SERVICING



IGNITION CONTROL BOARD HEAT OFF-DELAY SELECTION J1

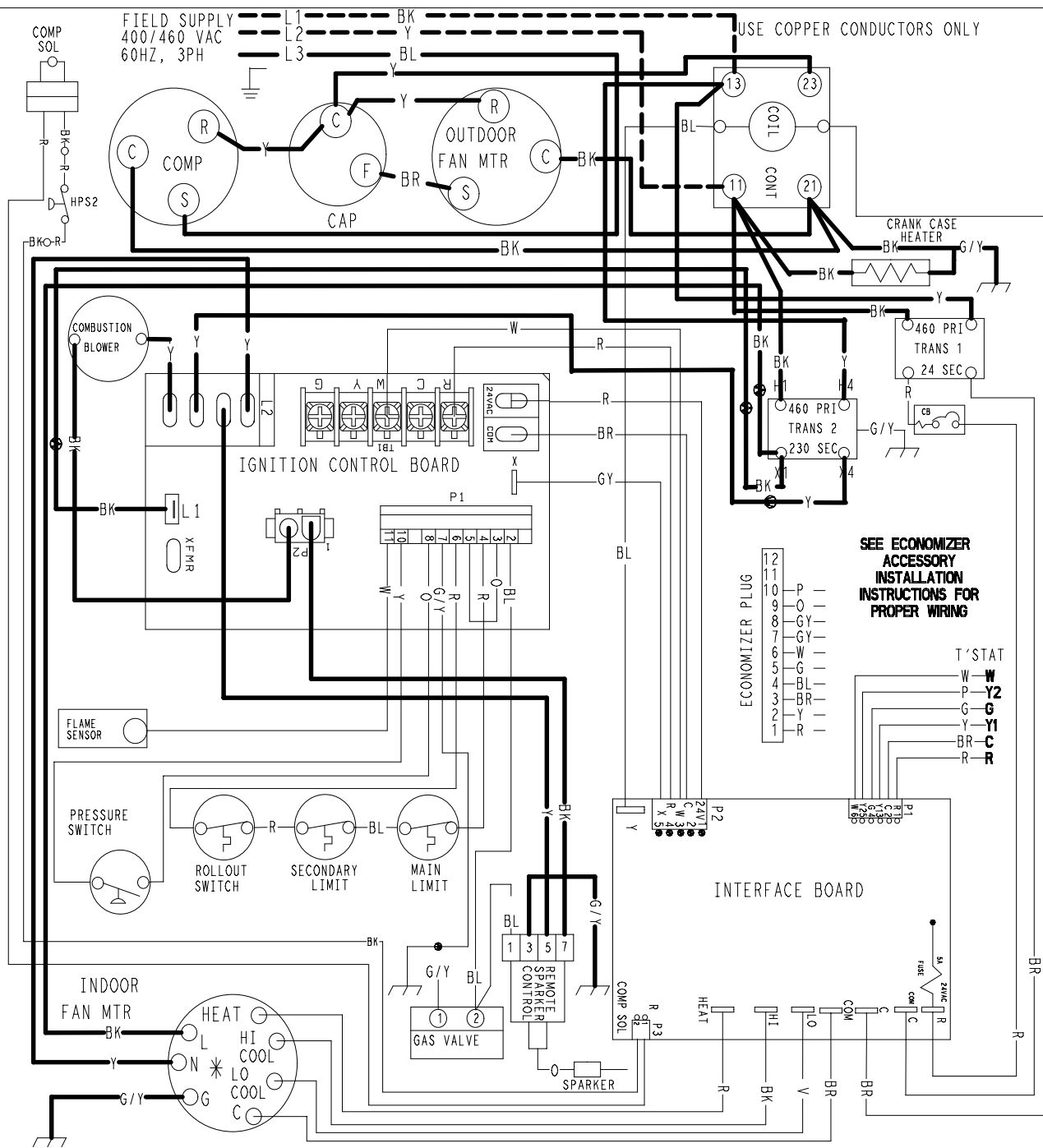
COOL ON DELAY: 0 SEC.
COOL OFF DELAY: 90 SEC.
HEAT ON DELAY: 30 SEC.

HEAT OFF-DELAY	60	140	180
HEAT OFF-DELAY	60	140	180
HEAT OFF-DELAY	60	140	180
HEAT OFF-DELAY	60	140	180

50CU500360 3.0

CONNECTION WIRING DIAGRAM

DANGER: ELECTRICAL SHOCK HAZARD DISCONNECT POWER BEFORE SERVICING



**SEE ECONOMIZER
ACCESSORY
INSTALLATION
INSTRUCTIONS
FOR
PROPER WIRING**

- ECONOMIZER PLUG**
- 12 P
 - 11 O
 - 10 GY
 - 9 GY
 - 8 GY
 - 7 W
 - 6 G
 - 5 G
 - 4 BL
 - 3 BR
 - 2 Y
 - 1 R

- T' STAT**
- W - W
 - P - Y2
 - G - G
 - Y - Y1
 - BR - C
 - R - R

IF ANY OF THE ORIGINAL WIRE AS SUPPLIED WITH THE APPLIANCE MUST BE REPLACED, IT MUST BE REPLACED WITH TYPE AWM-105°C OR ITS EQUIVALENT.

* SEE INSTALLATION INSTRUCTIONS FOR PROPER HEATING AND COOLING CONNECTIONS FOR YOUR UNIT. INDOOR FAN MOTOR PLUGS- "Do Not Disconnect Under Load"

- LINE VOLTAGE FACTORY
- - - - -** LOW VOLTAGE FIELD
- LOW VOLTAGE FACTORY
- - - - -** LINE VOLTAGE FIELD
- INTERNAL CIRCUIT BOARD WIRING

COLOR CODE		BLACK	BK	GREEN	G	WHITE	W
		BLUE	BL	ORANGE	O	YELLOW	Y
		BROWN	BR	RED	R		
		GRAY	GY	VIOLET	V		
		PINK	P				