

Parts List

Charging Charts & Wiring Diagrams

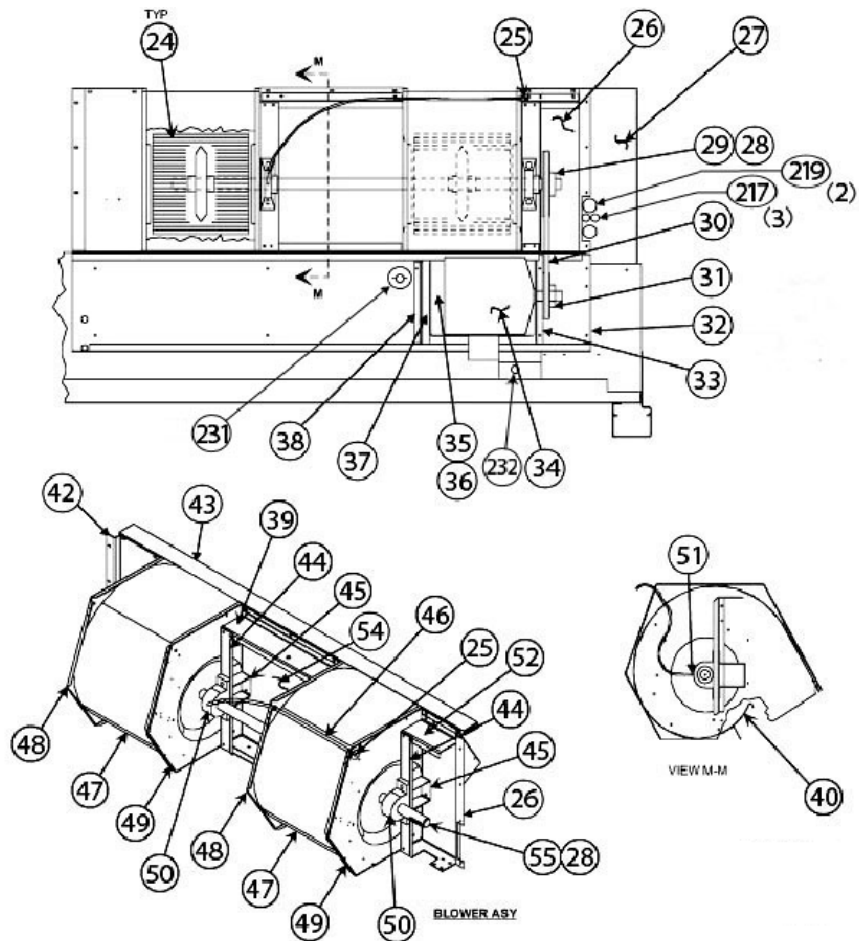
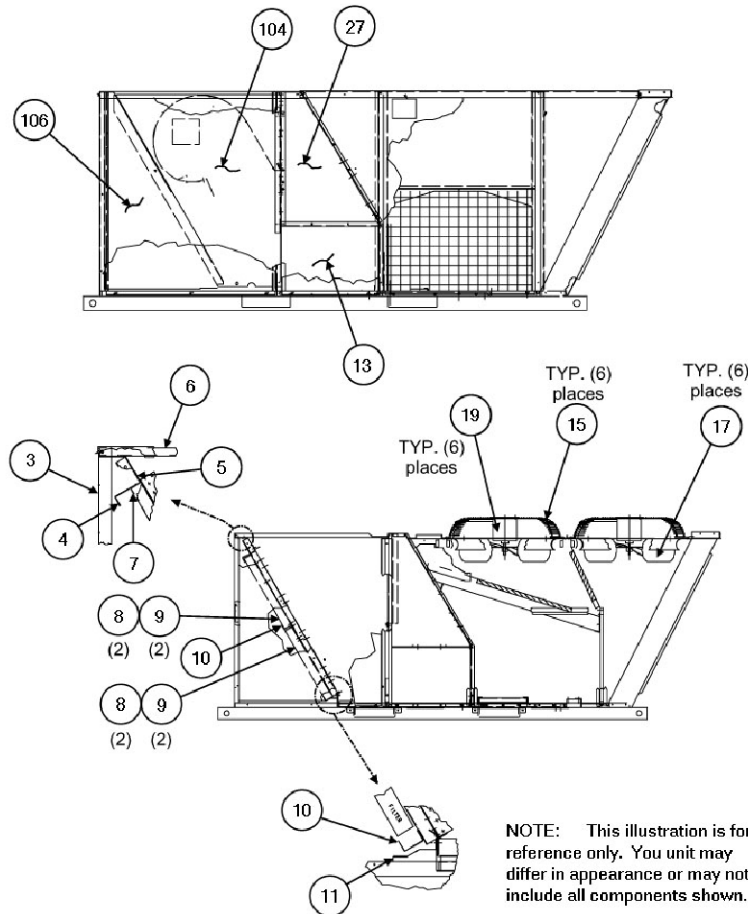
Models

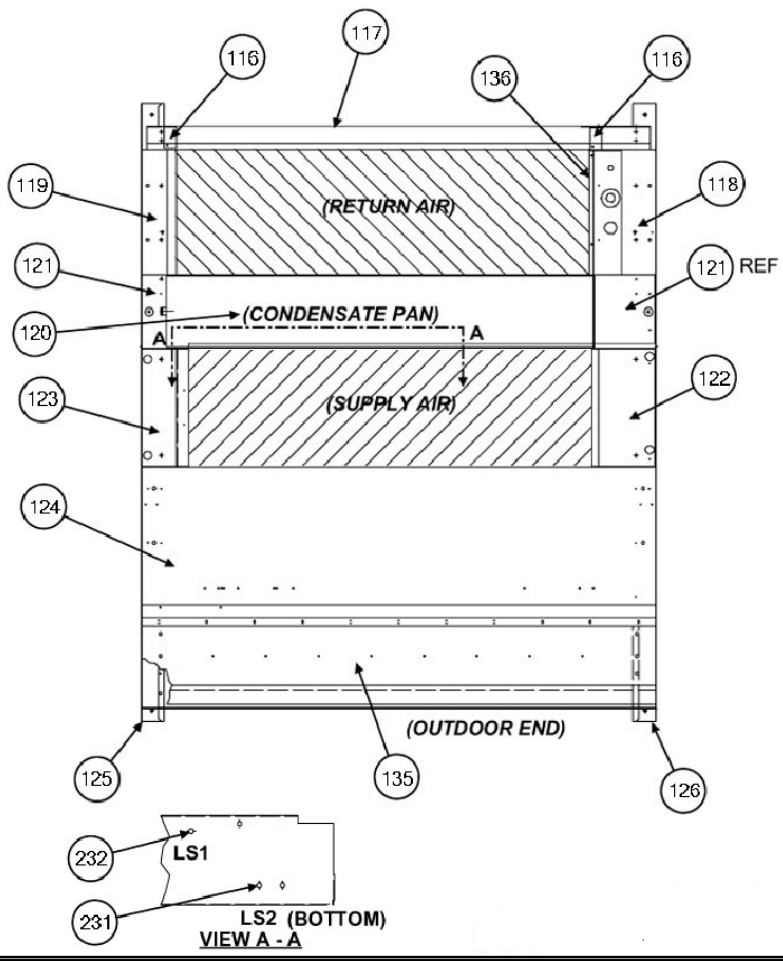
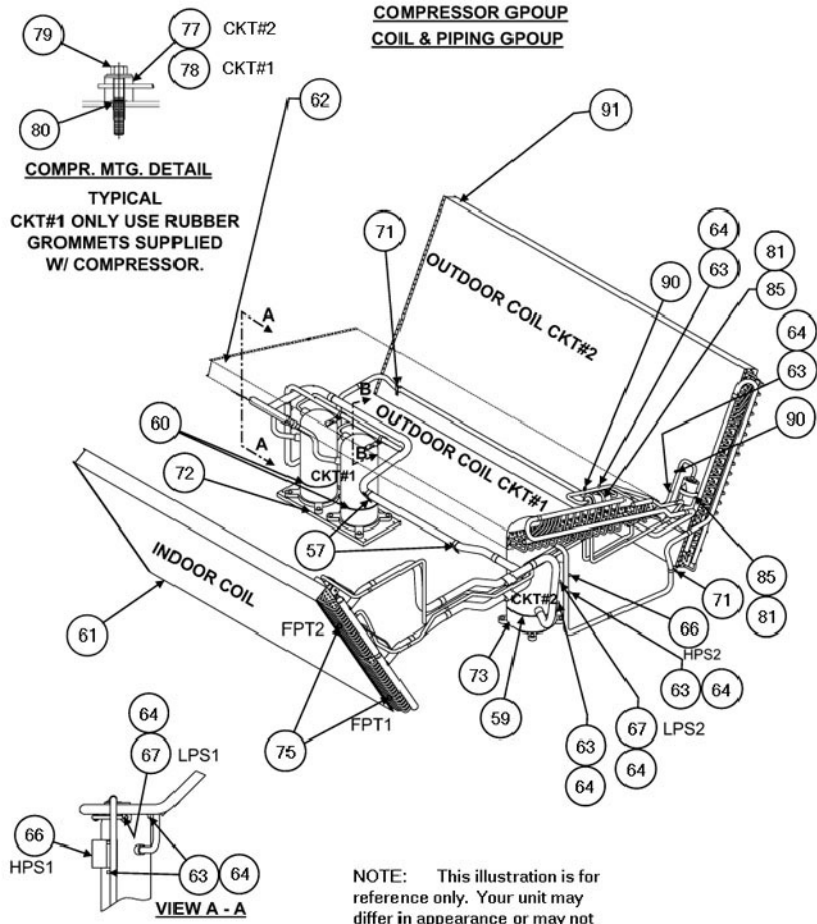
PGE300H275A
PGE300L275A
PGE300H360A
PGE300L360A
PGE300S360A

<u>Table of Contents</u>	<u>Page</u>
Parts Drawings -----	2 to 7
Parts list -----	8 to 13
Charging data -----	14 & 15
Wiring Diagrams -----	16

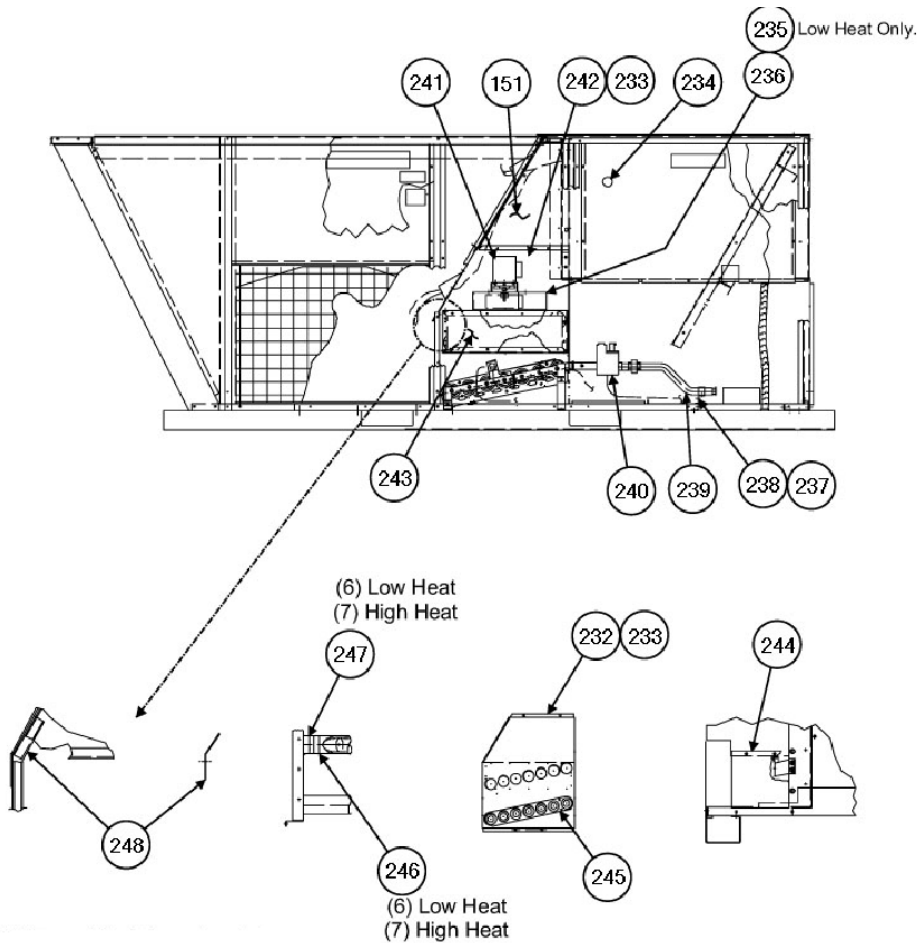
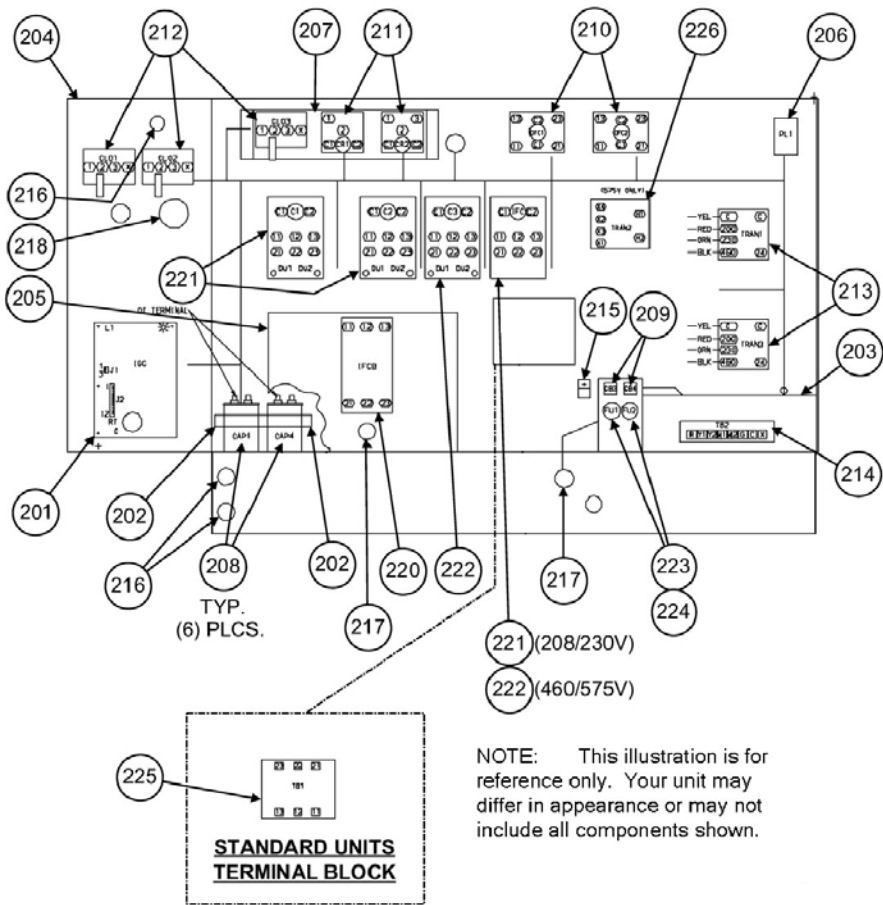
Three Phase Package Gas-Electric Combination Units

Save This Manual For Future Reference



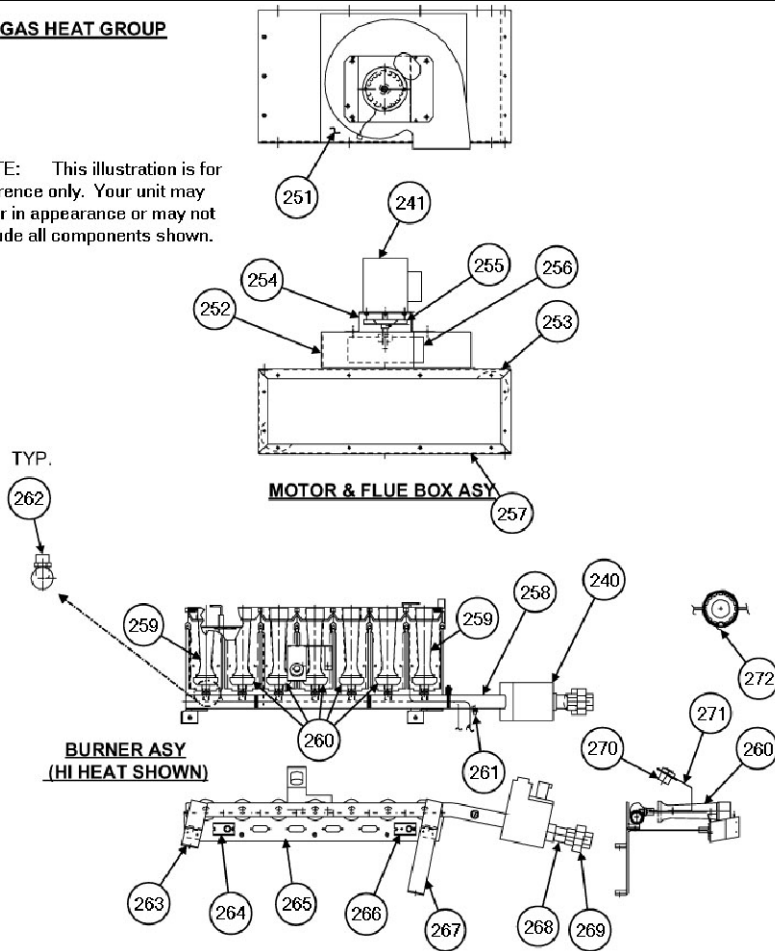


CONTROL BOX GROUP

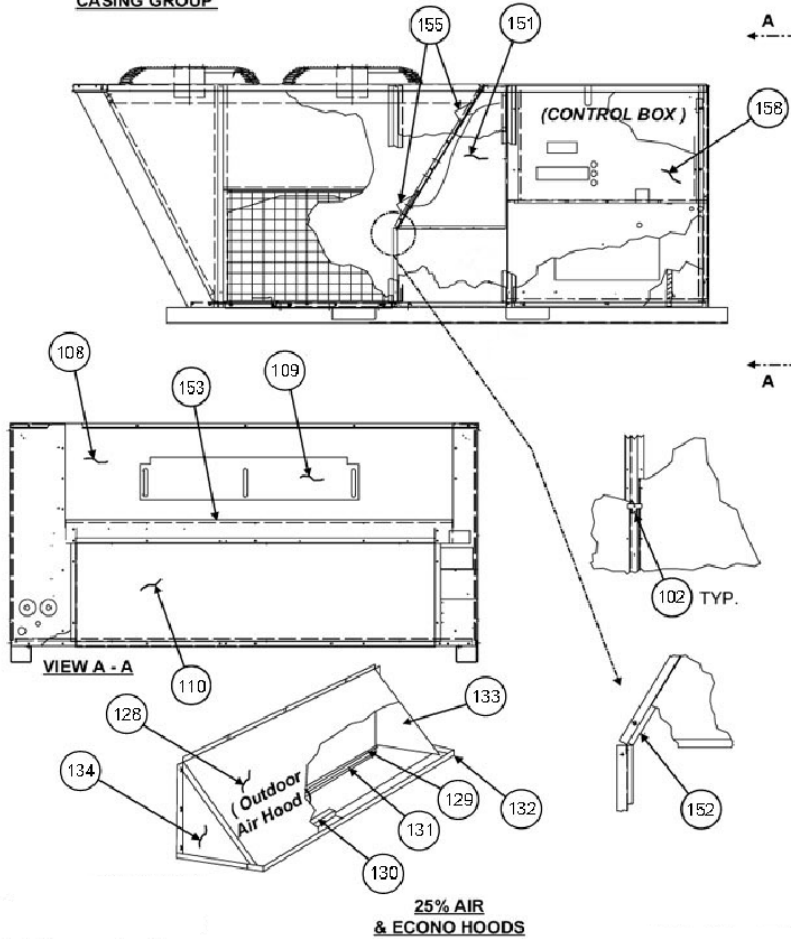


GAS HEAT GROUP

NOTE: This illustration is for reference only. Your unit may differ in appearance or may not include all components shown.

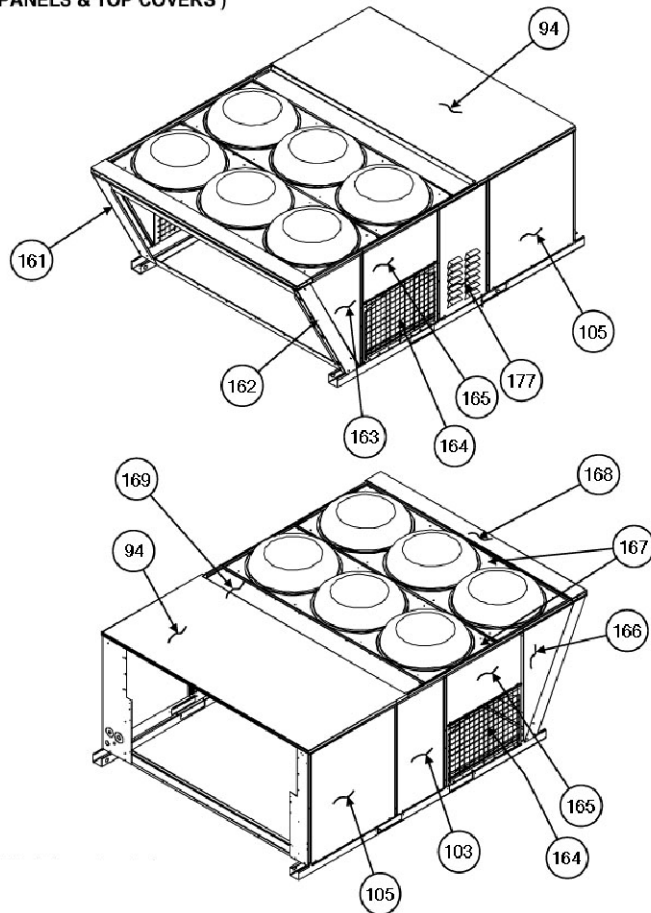


CASING GROUP

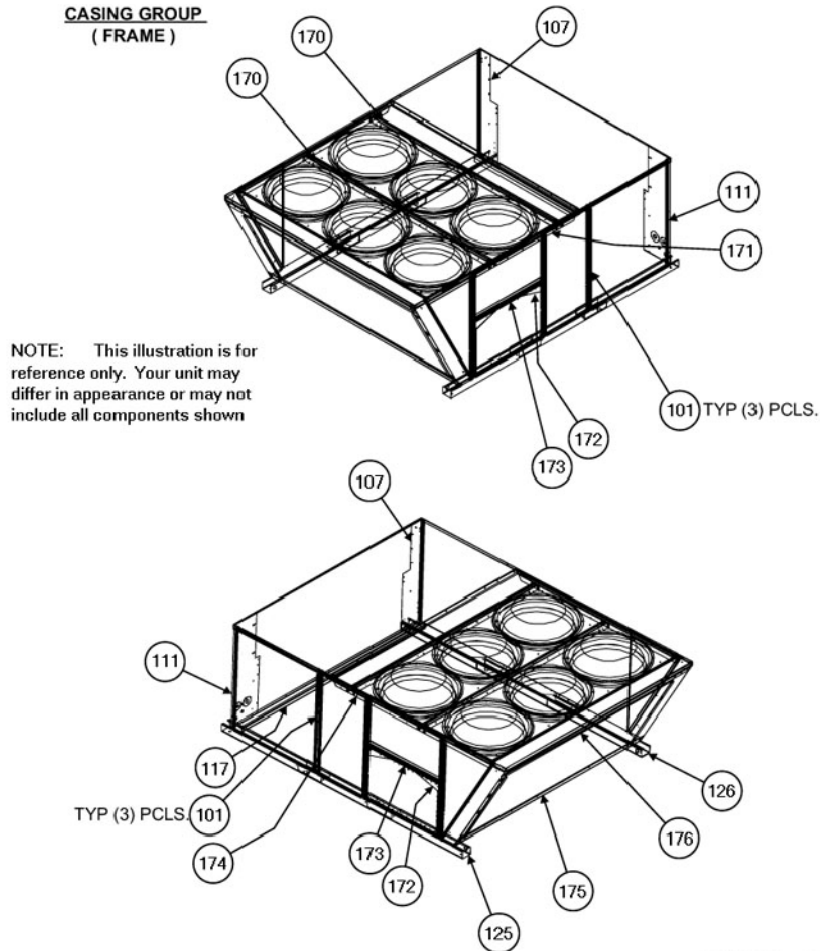


**25% AIR
& ECONO HOODS**

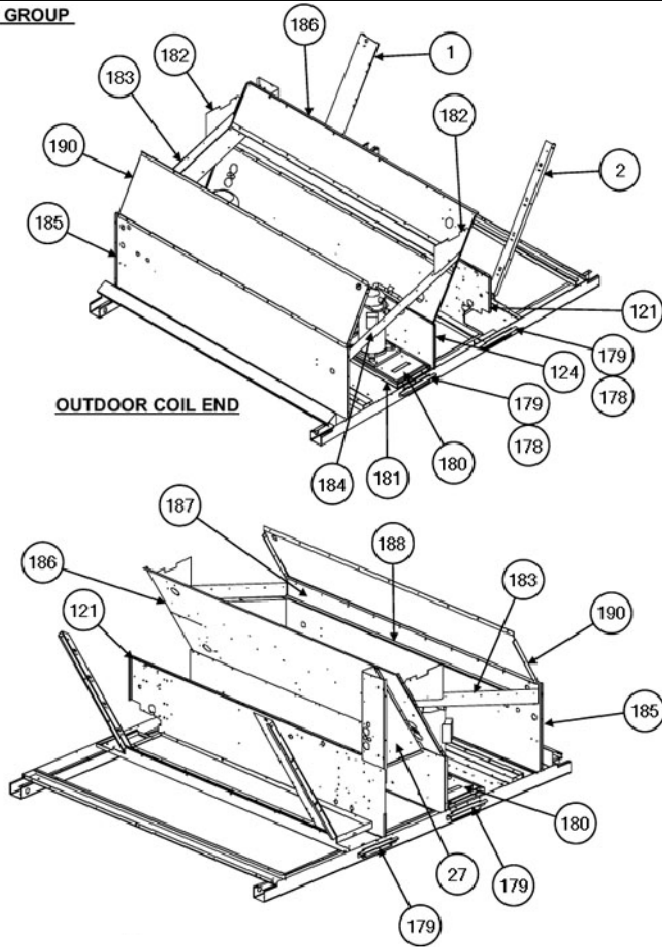
CASING GROUP
(SKIN PANELS & TOP COVERS)



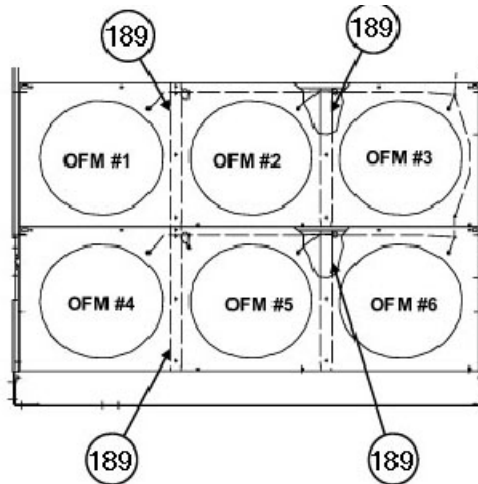
CASING GROUP
(FRAME)



CASING GROUP



FAN & MOTOR GROUP



NOTE: This illustration is for reference only. Your unit may differ in appearance or may not include all components shown.

KEY NO.	DESCRIPTION	FAST NUMBER	PGE300H275AA	PGE300H360AA
1	SUPPORT COIL	1172131	1	1
2	SUPPORT COIL	1171468	1	1
3	ANGLE	1171014	1	1
4	TRACK FILTER	1171491	1	1
5	ANGLE COIL	1171118	1	1
6	BRACE UPPER	1171060	1	1
7	PLATE BLOCKOFF	1171042	1	1
8	FILTER AIR 16X20X2 DISP	1171229	4	4
9	FILTER AIR 20X20X2 DISP	1171010	4	4
10	TRACK FILTER	1171492	3	3
11	SUPPORT LOWER	1171464	1	1
13	HEATER COVER	1171290	1	1
15	GUARD FAN	1171266	6	6
17	FAN C 22" 3B 1/2" 28 INT	1171219	6	6
19	MTR CND 1/230 1/2 1050/1	1173519	6	6
24	WHEEL BD12x12x1-7/16 REV CV	1171052	2	2
25	CONNECTOR FEMALE COMPRESSION	1171138	1	1
26	DECK FAN INDOOR	1171215	1	1
27	HEAT BAFFLE	1171283	1	1
28	KEY	1171321	1	1
29	PULLEY FAN 1 7/16 X 8.00 2B5V80 (STD)	1173194	1	1
29	PULLEY FAN 2BK70 X 1 7/16 (HIGH STATIC)	1173625	1	1
30	BELT V B50 53" (STD)	1171811	2	2
30	BELT V B47 (HIGH STATIC)	BLTB47	2	2
31	PULLEY 1 3/8 X 6.50 2VP65	1173193	1	1
32	UPRIGHT INDOOR FAN MOTOR	1171226	1	1
33	BRACKET EVAP MOTOR	1171076	1	1
34	MTR BLT 3/208-460 10.0 1745	1173180	1	1
35	MOTOR PLATE	1171346	1	1
36	BOLT BELT ADJ 5/16-18 X 15.5 S	1171055	2	2
37	BRACKET EVAP MOTOR	1171075	1	1
38	ANGLE MOTOR MOUNTING PLATE	1171013	1	1
39	BRACKET FAN 19"ZEE CHANNEL	1171212	1	1
40	PANEL CUTOFF BLWR	1171044	2	2
42	INDOOR FAN DECK	1171310	1	1
43	RAIL TOP	1171490	1	1
44	BRACKET ASY BEARING	1171036	2	2
45	BRACKET FAN 1.75"HAT CHANNEL	1171210	2	2
46	TUBE	1171501	1	1
47	SCROLL FAN	1171224	2	2
48	PLATE BLOWER SIDE	1171046	2	2
49	PLATE BLOWER SIDE	1171047	2	2
50	BEARING PILLOW BLOCK 1-7/16"	1171034	2	2
51	CONNECTOR MALE COMPRESSION	1171157	1	1
52	BRACKET FAN 7"ZEE CHANNEL	1171211	1	1
54	DECK FAN INDOOR	1171213	1	1
55	SHAFT BLR	1171225	1	1
59	HTR CC WP 70W240V CH354	1171859	1	1
60	HEATER CC WP 40W240V	1171850	2	2
61	COIL.EVAP AL/CU	1173443	1	1
62	COIL.COND AL/CU	1173451	1	1
63	CAP FLARE	1171101	7	7
64	CORE VALVE	1171508	9	9
66	SWITCH PRESS HI O426 C320	1171303	2	2
67	SWITCH PRESS LO O27 C44	1171868	2	2
71	CLAMP 7/8"ID	1171115	7	7
72	COMPRESSOR-S-	1173465	1	1
73	COMPRESSOR -S-	1173471	1	1
75	FREEZE STAT O30 C45	1171252	2	2

KEY NO.	DESCRIPTION	FAST NUMBER	PGE300H275AA	PGE300H360AA
79	SCREW	1173427	10	10
80	NUT, RIVET INSERT	1173527	10	10
81	DRIER 16 CI 1/2"IN & OUT	1171203	2	2
85	STRAP FILTER	1172133	2	2
90	PLUG FUSIBLE 170F	1171403	2	2
91	COIL.COND AL/CU	1173452	1	1
94	PANEL TOP EVAP	1171360	1	1
101	POST CENTER	1171083	6	6
102	LATCH ASSEMBLY	1171019	8	8
103	PANEL CENTER ACCESS	1171378	1	1
104	BAFFLE FAN	1171209	1	1
105	PANEL INDOOR ACCESS	1171379	2	2
106	COVER FILTER ACCESS S	1171319	1	1
107	CORNER POST IFM ACCESS SIDE	1171408	1	1
108	PLATE 25% AIR	1171392	1	1
109	SLIDER 25% AIR	1171457	1	1
110	PANEL	1171361	1	1
111	CORNER POST	1171171	1	1
116	ANGLE BASE RAIL	1171029	2	2
117	RAIL BASE	1171030	1	1
118	PAN FILTER	1171236	1	1
119	PAN FILTER	1171237	1	1
120	PAN CONDENSATE	1171517	1	1
121	BASE PAN	1171021	1	1
122	HEATER PAN	1171292	1	1
123	HEATER PAN	1171291	1	1
124	BASE PAN	1171022	1	1
128	COVER HOOD TOP	1171183	1	1
129	BRACKET FILTER	1171241	1	1
130	ANGLE FILTER RETAINER	1171015	1	1
131	BRACKET FILTER	1171084	1	1
132	PAN HOOD DRAIN	1171358	1	1
133	PANEL HOOD SIDE RIGHT	1171380	1	1
134	PANEL HOOD SIDE LEFT	1171381	1	1
136	SPACER PLATE	1171459	1	1
151	HEAT BAFFLE	1171284	1	1
153	CHANNEL DUCT	1171111	1	1
155	GUARD FAN	1171273	2	2
158	COVER INNER ELEC BOX	1171882	1	1
161	POST CONDENSER	1173534	1	1
162	POST CONDENSER	1173535	1	1
163	PANEL CONDENSER	1173529	1	1
164	GRILLE OUTDOOR COIL	1173498	2	2
165	PANEL OUTDOOR COIL	1173531	2	2
166	PANEL CONDENSER	1173530	1	1
167	OUTDOOR FAN DECK	1171354	2	2
168	CAP TOP	1173430	1	1
171	SUPPORT TOP	1173548	1	1
174	SUPPORT TOP	1173549	1	1
177	PANEL BURNER ACCESS	1171086	1	1
189	SUPPORT DECK	1171189	4	4
201	MODULE IGN UT 1068-12	1171165	1	1
202	STRAP FORMED	1172132	2	2
204	CONTROL BOX	1171167	1	1
205	BRACKET CIRCUIT BREAKER	1172140	1	1
208	CAP RN OV 370V 10	1171108	6	6
209	BREAKER 3.2A 1 POLE 250V	1171114	2	2
210	CONTACTOR 2P 20A 24V	1171160	2	2
211	RELAY DPDT 6FLA 24V	1171813	2	2
212	RELAY COMP LOCKOUT	1171437	3	3

KEY NO.	DESCRIPTION	FAST NUMBER	PGE300H275AA	PGE300H360AA
213	TRANS 200/230/460>24 75VA	1171498	2	2
214	TERMINAL BOARD	1173187	1	1
215	LUG GROUND 14-2/0	1171822	1	1
216	BUSHING HEYCO 7/8" 2126	1171828	4	4
217	BUSHING HEYCO 1-3/32" 2166	1171829	10	10
218	BUSHING HEYCO 2-1/2" 2420	1171824	5	5
219	BUSHING HEYCO 2" 2400	1171823	2	2
220	BREAKER CIRCUIT	1173182	1	1
221	CONTACTOR 3P 40A 24V	1171161	3	3
222	CONTACTOR 3P 50A 24V	1173477	1	1
223	FUSE	1173492	2	2
224	BUSSMANN FUSE	1173491	2	2
231	SWITCH TEMP DISC O120 C90	1173181	1	*
231	SWITCH LMT 140-30	1171475	*	1
232	SWITCH LMT 130-30	1171476	1	1
234	PLUG BUTTON 1-1/2" SS-50834	1171100	2	2
236	FLUE EXTENSION	1171251	1	1
237	CLAMP TUBE 1-1/8"ID	1171844	1	1
238	MANIFOLD BRACKET	1171332	1	1
239	MANIFOLD	1171329	1	1
240	VALVE N DSI 2STG WR 36C76472	1171262	1	1
241	MTR VNT 1/230 1/16	1171333	1	1
242	HT EX 6S	1171286	1	*
242	HT EX 7S	1171285	*	1
243	COVER FLUE BOX	1171250	1	1
244	PLATE BLOCKOFF	1171041	1	1
245	RETAINER	1171246	1	*
245	RETAINER	1171438	*	1
246	BAFFLE, GAS	1171018	6	7
247	CLIP RETAINING	1171117	6	7
248	RETAINER DRIP EDGE	1171204	1	1
251	GASKET INDUCED DRAFT HT EX	1171313	1	1
252	HOUSING	1171299	1	1
253	BOX FLUE (TOP/RIGHT)	1171248	1	1
254	MOTOR CHANNEL	1171344	1	1
255	FAN C 3.25" 12B 5/16" INT S	1171222	1	1
256	WHEEL DD6.3x2.0x5/16 CCW FL	1171051	1	1
257	BOX FLUE (BOTTOM/LEFT)	1171249	1	1
258	MANIFOLD ASS'Y.	1171330	1	*
258	MANIFOLD ASS'Y.	1171331	*	1

KEY NO.	DESCRIPTION	FAST NUMBER	PGE300H275AA	PGE300H360AA
259	BURNER ASY OUTER W/DIMPLE	1171088	2	2
260	BURNER ASY INNER	1171096	4	5
261	PLUG PIPE	1172135	1	1
262	ORIFICE MAIN 30	1171461	6	*
262	ORIFICE MAIN 29	1171460	*	7
263	BRACKET BURNER (LEFT/SHORT)	1171091	1	1
264	SENSOR FLAME	1171448	1	1
265	SUPPORT BURNER	1171092	1	1
266	IGNITOR	1171305	1	1
267	BRACKET BURNER (RIGHT/TALL)	1171093	1	1
268	NIPPLE BLACK 3/4 X 2 IN	1171855	1	1
269	UNION 3/4" NPT	1171840	1	1
270	SWITCH LMT 225-50	1171484	1	1
271	BRACKET ROLLOUT SWITCH	1171074	1	1
272	RING INSERT	1171439	6	7
)	PANEL ACCESS FLUE BAFFLE	1171005	1	1
)	PANEL ACCESS FLUE BAFFLE CVR	1171006	1	1
)	COUPLING HALF	1171009	2	2
)	BAFFLE	1171016	1	1
)	BAFFLE	1171017	1	1
)	BRACKET FILTER SUPPORT	1171085	1	1
)	BOLT HEX HEAD 3/8-16 X 2.5	1171103	5	5
)	CAP WIND	1171104	1	1
)	SCREEN EXHAUST	1171208	1	1
)	TUBE FEEDER	1171228	40	40
)	FILTER PACKAGE	1171235	1	1
)	FILTER AIR 20X20X1 WASHABLE	1171243	1	1
)	FILTER AIR 20X25X1 WASHABLE	1171244	2	2
)	HOOD, OUTSIDE AIR	1171298	1	1
)	PLATE MOTOR	1171400	1	1
)	PLUG ASSEMBLY	1171404	1	1
)	RECEPTACLE	1171430	1	1
)	SPACER	1171458	1	1
)	TERMINAL BLOCK	1171485	1	1
)	FITTING ACCESS	1171507	11	11
)	WIND CAP ASSEMBLY	1171519	1	1
)	GUARD FAN	1171799	1	1
)	PLUG BUTTON 7/8" SS-48155	1171830	1	1
)	PLUG BUTTON 1" SS-48143	1171831	2	2
)	PLUG BUTTON 5/16"	1171843	4	4
)	RETAINER OUTER FANSIDE PLATE	1172134	2	2
)	CONDUIT FLEXIBLE	1172138	1	1
)	CONDUIT	1172139	6	6
)	BRACKET	1172141	1	1
)	NOZZLE	1173175	2	2
)	CORE VALVE	1173177	4	4
)	DISTRIBUTOR	1173485	2	2
)	HARNESS ASY COMP	1173504	1	1
)	HARNESS ASY COMP	1173505	1	1
)	WIRE ASSEMBLY	1173507	1	1
)	HARNESS ASY COND FAN	1173508	6	6
)	SPEED NUT	1173528	2	2
)	VALVE 1XV 11.0 EBSVE-11-GA	1173561	2	2

KEY NO.	DESCRIPTION	FAST NUMBER	PGE300L275AA	PGE300L360AA
1	SUPPORT COIL	1172131	1	1
2	SUPPORT COIL	1171468	1	1
3	ANGLE	1171014	1	1
4	TRACK FILTER	1171491	1	1
5	ANGLE COIL	1171118	1	1
6	BRACE UPPER	1171060	1	1
7	PLATE BLOCKOFF	1171042	1	1
8	FILTER AIR 16X20X2 DISP	1171229	4	4
9	FILTER AIR 20X20X2 DISP	1171010	4	4
10	TRACK FILTER	1171492	3	3
11	SUPPORT LOWER	1171464	1	1
13	HEATER COVER	1171290	1	1
15	GUARD FAN	1171266	6	6
17	FAN C 22" 3B 1/2" 28 INT	1171219	6	6
19	MTR CND 1/460 1/2 1050/1	1173520	6	6
24	WHEEL BD12x12x1-7/16 REV CV	1171052	2	2
25	CONNECTOR FEMALE COMPRESSION	1171138	1	1
26	DECK FAN INDOOR	1171215	1	1
27	HEAT BAFFLE	1171283	1	1
28	KEY	1171321	1	1
29	PULLEY FAN 1 7/16 X 8.00 2B5V80 (STD)	1173194	1	1
29	PULLEY FAN 2BK70 X 1 7/16 (HIGH STATIC)	1173625	1	1
30	BELT V B50 53" (STD)	1171811	2	2
30	BELT V B47 (HIGH STATIC)	BLTB47	2	2
31	PULLEY 1 3/8 X 6.50 2VP65	1173193	1	1
32	UPRIGHT INDOOR FAN MOTOR	1171226	1	1
33	BRACKET EVAP MOTOR	1171076	1	1
34	MTR BLT 3/208-460 10.0 1/45	1173180	1	1
35	MOTOR PLATE	1171346	1	1
36	BOLT BELT ADJ 5/16-18 X 15.5	1171055	2	2
37	BRACKET EVAP MOTOR	1171075	1	1
38	ANGLE MOTOR MOUNTING PLATE	1171013	1	1
39	BRACKET FAN 19" ZEE CHANNEL	1171212	1	1
40	PANEL CUTOFF BLWR	1171044	2	2
42	INDOOR FAN DECK	1171310	1	1
43	RAIL TOP	1171490	1	1
44	BRACKET ASY BEARING	1171036	2	2
45	BRACKET FAN 1.75"HAT CHANNEL	1171210	2	2
46	TUBE	1171501	1	1
47	SCROLL FAN	1171224	2	2
48	PLATE BLOWER SIDE	1171046	2	2
49	PLATE BLOWER SIDE	1171047	2	2
50	BEARING PILLOW BLOCK 1-7/16"	1171034	2	2
51	CONNECTOR MALE COMPRESSION	1171157	1	1
52	BRACKET FAN 7" ZEE CHANNEL	1171211	1	1
54	DECK FAN INDOOR	1171213	1	1
55	SHAFT BLR	1171225	1	1
59	HTR CC WP 70W480V CH254-03	1171866	1	1
60	HEATER CRANKCASE - 460 VOLT	1173513	2	2
61	COIL.EVAP AL/CU	1173443	1	1
62	COIL.COND AL/CU	1173451	1	1
63	CAP FLARE	1171101	7	7
64	CORE VALVE	1171508	9	9
66	SWITCH PRESS HI O426 C320	1171303	2	2
67	SWITCH PRESS LO O27 C44	1171868	2	2
71	CLAMP 7/8"ID	1171115	7	7
72	COMPRESSOR-S-	1173466	1	1
73	COMPRESSOR -S-	1173472	1	1
75	FREEZE STAT O30 C45	1171252	2	2

KEY NO.	DESCRIPTION	FAST NUMBER	PGE300L275AA	PGE300L360AA
79	SCREW	1173427	10	10
80	NUT, RIVET INSERT	1173527	10	10
81	DRIER T6 CI 1/2"IN & OUT	1171203	2	2
85	STRAP FILTER	1172133	2	2
90	PLUG FUSIBLE 1/0F	1171403	2	2
91	COIL.COND AL/CU	1173452	1	1
94	PANEL TOP EVAP	1171360	1	1
101	POST CENTER	1171083	6	6
102	LATCH ASSEMBLY	1171019	8	8
103	PANEL CENTER ACCESS	1171378	1	1
104	BAFFLE FAN	1171209	1	1
105	PANEL INDOOR ACCESS	1171379	2	2
106	COVER FILTER ACCESS	1171319	1	1
107	CORNER POST IFM ACCESS SIDE	1171408	1	1
108	PLATE 25% AIR	1171392	1	1
109	SLIDER 25% AIR	1171457	1	1
110	PANEL	1171361	1	1
111	CORNER POST	1171171	1	1
116	ANGLE BASE RAIL	1171029	2	2
117	RAIL BASE	1171030	1	1
118	PAN FILTER	1171236	1	1
119	PAN FILTER	1171237	1	1
120	PAN CONDENSATE	1171517	1	1
121	BASE PAN	1171021	1	1
122	HEATER PAN	1171292	1	1
123	HEATER PAN	1171291	1	1
124	BASE PAN	1171022	1	1
128	COVER HOOD TOP	1171183	1	1
129	BRACKET FILTER	1171241	1	1
130	ANGLE FILTER RETAINER	1171015	1	1
131	BRACKET FILTER	1171084	1	1
132	PAN HOOD DRAIN	1171358	1	1
133	PANEL HOOD SIDE RIGHT	1171380	1	1
134	PANEL HOOD SIDE LEFT	1171381	1	1
136	SPACER PLATE	1171459	1	1
151	HEAT BAFFLE	1171284	1	1
153	CHANNEL DUCT	1171111	1	1
155	GUARD FAN	1171273	2	2
158	COVER INNER ELEC BOX	1171882	1	1
161	POST CONDENSER	1173534	1	1
162	POST CONDENSER	1173535	1	1
163	PANEL CONDENSER	1173529	1	1
164	GRILLE OUTDOOR COIL	1173498	2	2
165	PANEL OUTDOOR COIL	1173531	2	2
166	PANEL CONDENSER	1173530	1	1
167	OUTDOOR FAN DECK	1171354	2	2
168	CAP TOP	1173430	1	1
171	SUPPORT TOP	1173548	1	1
174	SUPPORT TOP	1173549	1	1
177	PANEL BURNER ACCESS	1171086	1	1
189	SUPPORT DECK	1171189	4	4
201	MODULE IGN UT 1068-12	1171165	1	1
202	STRAP FORMED	1172132	2	2
204	CONTROL BOX	1171167	1	1
205	BRACKET CIRCUIT BREAKER	1172140	1	1
208	CAP RN OV 370V 10	1171108	6	6
209	BREAKER 3.2A 1 POLE 250V	1171114	2	2
210	CONTACTOR 2P 20A 24V	1171160	2	2
211	RELAY DPDT 6FLA 24V	1171813	2	2
212	RELAY COMP LOCKOUT	1171437	3	3

KEY NO.	DESCRIPTION	FAST NUMBER	PGE300L275AA	PGE300L360AA
213	TRANS 200/230/460>24 75VA	1171498	2	2
214	TERMINAL BOARD	1173187	1	1
215	LUG GROUND 14-2/0	1171822	1	1
216	BUSHING HEYCO 7/8" 2126	1171828	4	4
217	BUSHING HEYCO 1-3/32" 2166	1171829	10	10
218	BUSHING HEYCO 2-1/2" 2420	1171824	5	5
219	BUSHING HEYCO 2" 2400	1171823	2	2
220	BREAKER 14.6A 3 POLE 48V	1171816	1	1
221	CONTACTOR 3P 40A 24V	1171161	2	2
222	CONTACTOR 3P 40A 24V	1172449	2	2
223	FUSE KTK-3 1/2 3.5A 600V	1171098	2	2
224	FUSE HOLDER HPF 30A 600V	1171258	2	2
231	SWITCH TMP DISC 0120 C90	1173181	1	*
231	SWITCH LMT 140-30	1171475	*	1
232	SWITCH LMT 130-30	1171476	1	1
234	PLUG BUTTON 1-1/2" SS-50834	1171100	2	2
236	FLUE EXTENSION	1171251	1	1
237	CLAMP TUBE 1-1/8"ID	1171844	1	1
238	MANIFOLD BRACKET	1171332	1	1
239	MANIFOLD	1171329	1	1
240	VALVE N DSI 2STG WR 36C76472	1171262	1	1
241	MTR VNT 1/460 1/16	1171339	1	1
242	HT EX 6S	1171286	1	*
242	HT EX 7S	1171285	*	1
243	COVER FLUE BOX	1171250	1	1
244	PLATE BLOCKOFF	1171041	1	1
245	RETAINER FLAME	1171246	1	*
245	RETAINER FLAME	1171438	*	1
246	BAFFLE, GAS	1171018	6	7
247	CLIP RETAINING	1171117	6	7
248	RETAINER DRIP EDGE	1171204	1	1
251	GASKET INDUCED DRAFT HT EX	1171313	1	1
252	HOUSING	1171299	1	1
253	BOX FLUE (TOP/RIGHT)	1171248	1	1
254	MOTOR CHANNEL	1171344	1	1
255	FAN C 3.25" 12B 5/16" INT	1171222	1	1
256	WHEEL DD6.3x2.0x5/16 CCW FL	1171051	1	1
257	BOX FLUE (BOTTOM/LEFT)	1171249	1	1
258	MANIFOLD ASS'Y.	1171330	1	*
258	MANIFOLD ASS'Y.	1171331	*	1
259	BURNER ASY OUTER W/DIMPLE	1171088	2	2
260	BURNER ASY INNER	1171096	4	5
261	PLUG PIPE	1172135	1	1
262	ORIFICE MAIN 29	1171460	6	7
263	BRACKET BURNER (LEFT/SHORT)	1171091	1	1
264	SENSOR FLAME	1171448	1	1
265	SUPPORT BURNER	1171092	1	1
266	IGNITOR	1171305	1	1
267	BRACKET BURNER (RIGHT/TALL)	1171093	1	1
268	NIPPLE BLACK 3/4 X 2 IN	1171855	1	1

KEY NO.	DESCRIPTION	FAST NUMBER	PGE300L275AA	PGE300L360AA
269	UNION 3/4" NPT	1171840	1	1
270	SWITCH LMT 225-50	1171484	1	1
271	BRACKET ROLLOUT SWITCH	1171074	1	1
272	RING INSERT	1171439	6	7
)	PANEL ACCESS FLUE BAFFLE	1171005	1	1
)	PANEL ACCESS FLUE BAFFLE CVR	1171006	1	1
)	COUPLING HALF	1171009	2	2
)	BAFFLE	1171016	1	1
)	BAFFLE	1171017	1	1
)	BRACKET FILTER SUPPORT	1171085	1	1
)	BOLT HEX HEAD 3/8-16 X 2.5	1171103	5	5
)	CAP WIND	1171104	1	1
)	SCREEN EXHAUST	1171208	1	1
)	TUBE FEEDER	1171228	40	40
)	FILTER PACKAGE	1171235	1	1
)	FILTER AIR 20X20X1 WASHABLE	1171243	1	1
)	FILTER AIR 20X25X1 WASHABLE	1171244	2	2
)	HOOD, OUTSIDE AIR	1171298	1	1
)	PLATE MOTOR	1171400	1	1
)	PLUG ASSEMBLY	1171404	1	1
)	RECEPTACLE	1171430	1	1
)	SPACER	1171458	1	1
)	TERMINAL BLOCK	1171485	1	1
)	FITTING ACCESS	1171507	11	11
)	WIND CAP ASSEMBLY	1171519	1	1
)	GUARD FAN	1171799	1	1
)	PLUG BUTTON 7/8" SS-48155	1171830	1	1
)	PLUG BUTTON 1" SS-48143	1171831	2	2
)	PLUG BUTTON 5/16"	1171843	4	4
)	RETAINER OUTER FANSIDE PLATE	1172134	2	2
)	CONDUIT FLEXIBLE	1172138	1	1
)	CONDUIT	1172139	6	6
)	BRACKET	1172141	1	1
)	WIRING HARNESS	1173171	1	1
)	NOZZLE	1173175	2	2
)	CORE VALVE	1173177	4	4
)	DISTRIBUTOR	1173485	2	2
)	HARNESS ASY COMP	1173504	1	1
)	HARNESS ASY COMP	1173505	1	1
)	HARNESS ASY COND FAN	1173508	6	6
)	SPEED NUT	1173528	2	2
)	VALVE TXV 11.0 EBSVE-11-GA	1173561	2	2

KEY NO.	DESCRIPTION	FAST NUMBER	PGE300S360AA
1	SUPPORT COIL	1172131	1
2	SUPPORT COIL	1171468	1
3	ANGLE	1171014	1
4	TRACK FILTER	1171491	1
5	ANGLE COIL	1171118	1
6	BRACE UPPER	1171060	1
7	PLATE BLOCKOFF	1171042	1
8	FILTER AIR 16X20X2 DISP	1171229	4
9	FILTER AIR 20X20X2 DISP	1171010	4
10	TRACK FILTER	1171492	3
11	SUPPORT LOWER	1171464	1
13	HEATER COVER	1171290	1
15	GUARD FAN	1171266	6
17	FAN C 22" 3B 1/2" 28 INT	1171219	6
19	MTR CND 1/5/5 1/2 1050/1	1173521	6
24	WHEEL BDT2X12X1-7/16 REV CV	1171052	2
25	CONNECTOR FEMALE COMPRESSION	1171138	1
26	DECK FAN INDOOR	1171215	1
27	HEAT BAFFLE	1171283	1
28	KEY	1171321	1
29	PULLEY FAN 1 7/16 X 8.00 2B5V80 (STD)	1173194	1
29	PULLEY FAN 2BK70 X 1 7/16 (HIGH STATIC)	1173625	1
30	BELT V B50 53" (STD)	1171811	2
30	BELT V B47 (HIGH STATIC)	BLTB47	2
31	PULLEY 1 3/8 X 6.50 2VP65	1173193	1
32	UPRIGHT INDOOR FAN MOTOR	1171226	1
33	BRACKET EVAP MOTOR	1171076	1
34	MTR BLT 3/5/5 10.0 1740	1173179	1
35	MOTOR PLATE	1171346	1
36	BOLT BELT ADJ 5/16-18 X 15.5 S	1171055	2
37	BRACKET EVAP MOTOR	1171075	1
38	ANGLE MOTOR MOUNTING PLATE	1171013	1
39	BRACKET FAN 19" ZEE CHANNEL	1171212	1
40	PANEL CUTOFF BLWR	1171044	2
42	INDOOR FAN DECK	1171310	1
43	RAIL TOP	1171490	1
44	BRACKET ASY BEARING	1171036	2
45	BRACKET FAN 1.75" HAT CHANNEL	1171210	2
46	TUBE	1171501	1
47	SCROLL FAN	1171224	2
48	PLATE BLOWER SIDE	1171046	2
49	PLATE BLOWER SIDE	1171047	2
50	BEARING PILLOW BLOCK 1-7/16"	1171034	2
51	CONNECTOR MALE COMPRESSION	1171157	1
52	BRACKET FAN 7" ZEE CHANNEL	1171211	1
54	DECK FAN INDOOR	1171213	1
55	SHAFT BLR	1171225	1
59	HTR CC WP 70W240V CH354	1171859	1
60	HEATER CC WP 40W240V	1171850	2
61	COIL.EVAP AL/CU	1173443	1
62	COIL.COND AL/CU	1173451	1
63	CAP FLARE	1171101	7
64	CORE VALVE	1171508	9
66	SWITCH PRESS HI 0426 C320	1171303	2
67	SWITCH PRESS LO 027 C44	1171868	2
71	CLAMP 7/8" ID	1171115	7
72	COMPRESSOR-S-	1173467	1
73	COMPRESSOR -S-	1173473	1
75	FREEZE STAT 030 C45	1171252	2

KEY NO.	DESCRIPTION	FAST NUMBER	PGE300S360AA
79	SCREW	1173427	10
80	NUT, RIVET INSERT	1173527	10
81	DRIER 16 CI 1/2" IN & OUT	1171203	2
85	STRAP FILTER	1172133	2
90	PLUG FUSIBLE 170F	1171403	2
91	COIL.COND AL/CU	1173452	1
94	PANEL TOP EVAP	1171360	1
101	POST CENTER	1171083	6
102	LATCH ASSEMBLY	1171019	8
103	PANEL CENTER ACCESS	1171378	1
104	BAFFLE FAN	1171209	1
105	PANEL INDOOR ACCESS	1171379	2
106	COVER FILTER ACCESS	1171319	1
107	CORNER POST IFM ACCESS SIDE	1171408	1
108	PLATE 25% AIR	1171392	1
109	SLIDER 25% AIR	1171457	1
110	PANEL	1171361	1
111	CORNER POST	1171171	1
116	ANGLE BASE RAIL	1171029	2
117	RAIL BASE	1171030	1
118	PAN FILTER	1171236	1
119	PAN FILTER	1171237	1
120	PAN CONDENSATE	1171517	1
121	BASE PAN	1171021	1
122	HEATER PAN	1171292	1
123	HEATER PAN	1171291	1
124	BASE PAN	1171022	1
128	COVER HOOD TOP	1171183	1
129	BRACKET FILTER	1171241	1
130	ANGLE FILTER RETAINER	1171015	1
131	BRACKET FILTER	1171084	1
132	PAN HOOD DRAIN	1171358	1
133	PANEL HOOD SIDE RIGHT	1171380	1
134	PANEL HOOD SIDE LEFT	1171381	1
136	SPACER PLATE	1171459	1
151	HEAT BAFFLE	1171284	1
153	CHANNEL DUCT	1171111	1
155	GUARD FAN	1171273	2
158	COVER INNER ELEC BOX	1171882	1
161	POST CONDENSER	1173534	1
162	POST CONDENSER	1173535	1
163	PANEL CONDENSER	1173529	1
164	GRILLE OUTDOOR COIL	1173498	2
165	PANEL OUTDOOR COIL	1173531	2
166	PANEL CONDENSER	1173530	1
167	OUTDOOR FAN DECK	1171354	2
168	CAP TOP	1173430	1
171	SUPPORT TOP	1173548	1
174	SUPPORT TOP	1173549	1
177	PANEL BURNER ACCESS	1171086	1
189	SUPPORT DECK	1171189	4
201	MODULE IGN UT 1068-12	1171165	1
202	STRAP FORMED	1172132	2
204	CONTROL BOX	1171167	1
205	BRACKET CIRCUIT BREAKER	1172140	1
208	CAP RN OV 370V 10	1171108	6
209	BREAKER 3.2A 1 POLE 250V	1171114	2
210	CONTACTOR 2P 20A 24V	1171160	2
211	RELAY DPDT 6FLA 24V	1171813	2
212	RELAY COMBLOCKOUT	1171437	3

KEY NO.	DESCRIPTION	FAST NUMBER	PGE300S360AA
213	TRANS 200/230/460>24 75VA	1171498	2
214	TERMINAL BOARD	1173187	1
215	LUG GROUND 14-2/0	1171822	1
216	BUSHING HEYCO 7/8" 2126	1171828	4
217	BUSHING HEYCO 1-3/32" 2166	1171829	10
218	BUSHING HEYCO 2-1/2" 2420	1171824	1
219	BUSHING HEYCO 2" 2400	1171823	2
220	BREAKER 12A 3 POLE 600V	1171081	1
221	CONTACTOR 3P 40A 24V	1171161	2
222	CONTACTOR 3P 40A 24V	1172449	2
223	FUSE KTK-3 1/2 3.5A 600V	1171098	2
224	FUSE HOLDER HPF 30A 600V	1171258	2
226	TRANS 600>120/240 500VA	1171837	1
231	SWITCH LMT 140-30	1171475	1
232	SWITCH LMT 130-30	1171476	1
234	PLUG BUTTON 1-1/2" SS-50834	1171100	2
236	FLUE EXTENSION	1171251	1
237	CLAMP TUBE 1-1/8" ID	1171844	1
238	MANIFOLD BRACKET	1171332	1
239	MANIFOLD	1171329	1
240	VALVE N DSI 2STG WR 36C/64/2	1171262	1
241	MTR VNT 1/230 1/16	1171333	1
242	HT EX 7S	1171285	1
243	COVER FLUE BOX	1171250	1
244	PLATE BLOCKOFF	1171041	1
245	RETAINER	1171438	1
246	BAFFLE, GAS	1171018	7
247	CLIP RETAINING	1171117	7
248	RETAINER DRIP EDGE	1171204	1
251	GASKET INDUCED DRAFT HT EX	1171313	1
252	HOUSING	1171299	1
253	BOX FLUE (TOP/RIGHT)	1171248	1
254	MOTOR CHANNEL	1171344	1
255	FAN C 3.25" 12B 5/16" IN1	1171222	1
256	WHEEL DD6.3x2.0x5/16 CCW FL	1171051	1
257	BOX FLUE (BOTTOM/LEFT)	1171249	1
258	MANIFOLD ASS'Y.	1171331	1
259	BURNER ASY OUTER W/DIMPLE	1171088	2
260	BURNER ASY INNER	1171096	5
261	PLUG PIPE	1172135	1
262	ORIFICE MAIN 29	1171460	7
263	BRACKET BURNER (LEFT/SHORT)	1171091	1
264	SENSOR FLAME	1171448	1
265	SUPPORT BURNER	1171092	1
266	IGNITOR	1171305	1
267	BRACKET BURNER (RIGHT/TALL)	1171093	1
268	NIPPLE BLACK 3/4 X 2 IN	1171855	1
269	UNION 3/4" NPT	1171840	1
270	SWITCH LMT 225-50	1171484	1
271	BRACKET ROLLOUT SWITCH	1171074	1
272	RING INSERT	1171439	7

KEY NO.	DESCRIPTION	FAST NUMBER	PGE300S360AA
)	PANEL ACCESS FLUE BAFFLE	1171005	1
)	PANEL ACCESS FLUE BAFFLE CVR	1171006	1
)	COUPLING HALF	1171009	2
)	BAFFLE	1171016	1
)	BAFFLE	1171017	1
)	BRACKET FILTER SUPPORT	1171085	1
)	BOLT HEX HEAD 3/8-16 X 2.5	1171103	5
)	CAP WIND	1171104	1
)	SCREEN EXHAUST	1171208	1
)	TUBE FEEDER	1171228	40
)	FILTER PACKAGE	1171235	1
)	FILTER AIR 20X20X1 WASHABLE	1171243	1
)	FILTER AIR 20X25X1 WASHABLE	1171244	2
)	HOOD, OUTSIDE AIR	1171298	1
)	PLATE MOTOR	1171400	1
)	PLUG ASSEMBLY	1171404	1
)	RECEPTACLE	1171430	1
)	SPACER	1171458	1
)	TERMINAL BLOCK	1171485	1
)	FITTING ACCESS	1171507	11
)	WIND CAP ASSEMBLY	1171519	1
)	GUARD FAN	1171799	1
)	PLUG BUTTON 7/8" SS-48155	1171830	1
)	PLUG BUTTON 1" SS-48143	1171831	2
)	PLUG BUTTON 5/16"	1171843	4
)	RETAINER OUTER FANSIDE PLATE	1172134	2
)	CONDUIT FLEXIBLE	1172138	1
)	CONDUIT	1172139	6
)	BRACKET	1172141	1
)	WIRING HARNESS	1173171	1
)	NOZZLE	1173175	2
)	CORE VALVE	1173177	4
)	DISTRIBUTOR	1173485	2
)	HARNESS ASY COMP	1173504	1
)	HARNESS ASY COMP	1173505	1
)	HARNESS ASY COND FAN	1173508	6
)	SPEED NUT	1173528	2
)	VALVE TXV 11.0 EBSVE-11-GA	1173561	2

PGE300 Cooling Charging Chart

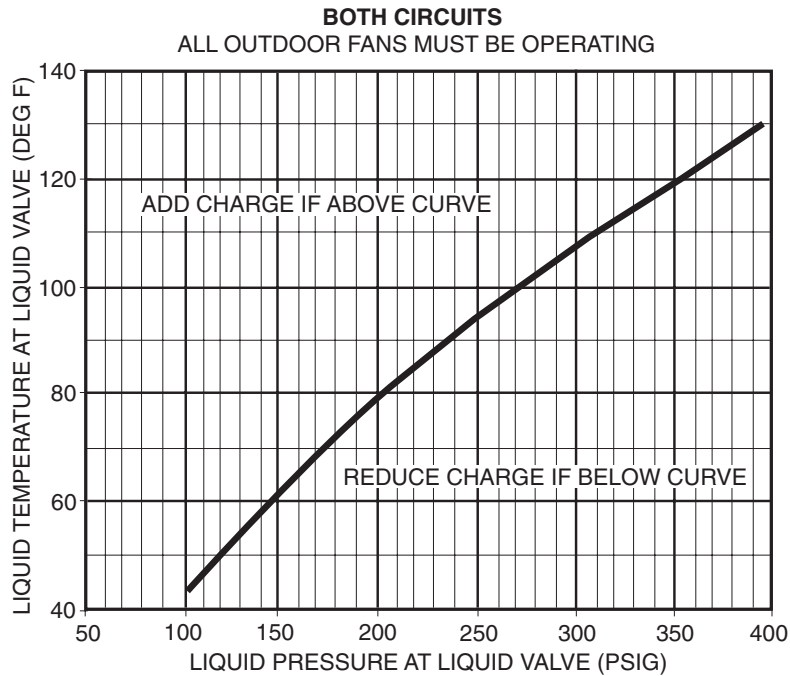


Fig. 41 — Cooling Charging Chart

TO USE THE COOLING CHARGING CHART - Use the above temperature and pressure readings, and find the intersection point on the cooling charging chart. If intersection point on chart is above line, add refrigerant. If intersection point on chart is below line, carefully recover some of the charge. Re-check suction pressure as charge is adjusted.

Note: Indoor-air cfm must be within normal operating range of unit. All outdoor fans must be operating.

The TXV is set to maintain between 15 and 20 degrees of superheat at the compressors. The valves are factory set and should not require re-adjustment.

PGE300 Expanded Performance Data (Cooling - gross capacity)

Temperature Air Entering Condenser - Edb (°F)		Air Entering Evaporator - Cfm/BF																			
		7,000/0.05				8,000/0.06				9,000/0.07				10,000/0.08				11,250/0.09			
		Temperature Air Entering Evaporator - Ewb (°F)																			
		57	62	67	72	57	62	67	72	57	62	67	72	57	62	67	72	57	62	67	72
75	TC	256	271	299	327	267	278	305	336	276	283	309	341	285	286	313	344	294	294	316	347
	SHC	256	232	196	159	267	249	208	166	276	265	220	173	285	281	232	182	294	294	252	198
	kW	18.0	18.3	18.9	19.6	18.3	18.5	19.1	19.8	18.5	18.7	19.2	19.9	18.7	18.8	19.4	20.1	19.0	19.0	19.5	20.2
85	TC	248	262	288	316	259	267	293	322	267	273	298	328	276	276	302	331	284	285	305	336
	SHC	248	228	192	154	259	244	204	161	267	259	216	169	276	274	228	175	284	284	244	187
	kW	20.0	20.4	20.9	21.5	20.3	20.4	21	21.7	20.6	20.6	21.2	21.9	20.8	20.8	21.3	22	21	21	21.5	22.1
95	TC	241	252	277	303	251	257	281	309	259	262	286	314	266	267	290	317	274	275	293	321
	SHC	241	223	187	149	251	239	198	157	259	254	210	164	266	265	222	171	274	275	238	180
	kW	22.4	22.6	23.1	23.7	22.6	22.7	23.3	23.9	22.8	22.9	23.4	24	23	23	23.5	24.2	23.2	23.2	23.6	24.2
105	TC	233	243	266	289	242	247	270	295	250	252	273	299	256	258	277	303	264	265	280	306
	SHC	233	218	182	145	242	233	194	152	250	248	206	159	256	257	217	166	264	265	232	176
	kW	24.9	25.1	25.6	26.2	25.2	25.3	25.8	26.3	25.4	25.4	25.9	26.5	25.6	25.6	26	26.6	25.8	25.8	26.1	26.7
115	TC	225	232	254	277	234	236	258	281	241	242	261	285	247	247	264	288	254	255	267	291
	SHC	225	214	178	140	234	228	189	148	241	241	201	155	247	247	211	162	253	255	227	171
	kW	27.9	27.9	28.5	29	28	28.1	28.6	29.2	28.2	28.2	28.7	29.2	28.4	28.4	28.8	29.3	28.7	28.7	28.9	29.5
125	TC	216	221	241	263	224	225	245	267	231	231	248	269	237	236	251	273	243	242	253	276
	SHC	216	208	173	136	223	221	184	142	230	231	196	149	236	236	206	157	243	242	221	166
	kW	30.9	31.1	31.6	32	31.2	31.2	31.7	32.2	31.4	31.4	31.7	32.3	31.6	31.6	31.9	32.3	31.7	31.7	31.9	32.5

FORMULAS AND NOTES FOR USING EXPANDED PERFORMANCE DATA

LEGEND

- BF - Bypass Factor
- edb - Entering Dry-Bulb
- ewb - Entering Wet-Bulb
- kW - Compressor Motor Power Input
- ldb - Leaving Dry-Bulb
- lwb - Leaving Wet-Bulb
- SHC - Sensible Heat capacity (1000 Btuh) Gross
- TC - Total Capacity (1000 Btuh) Gross

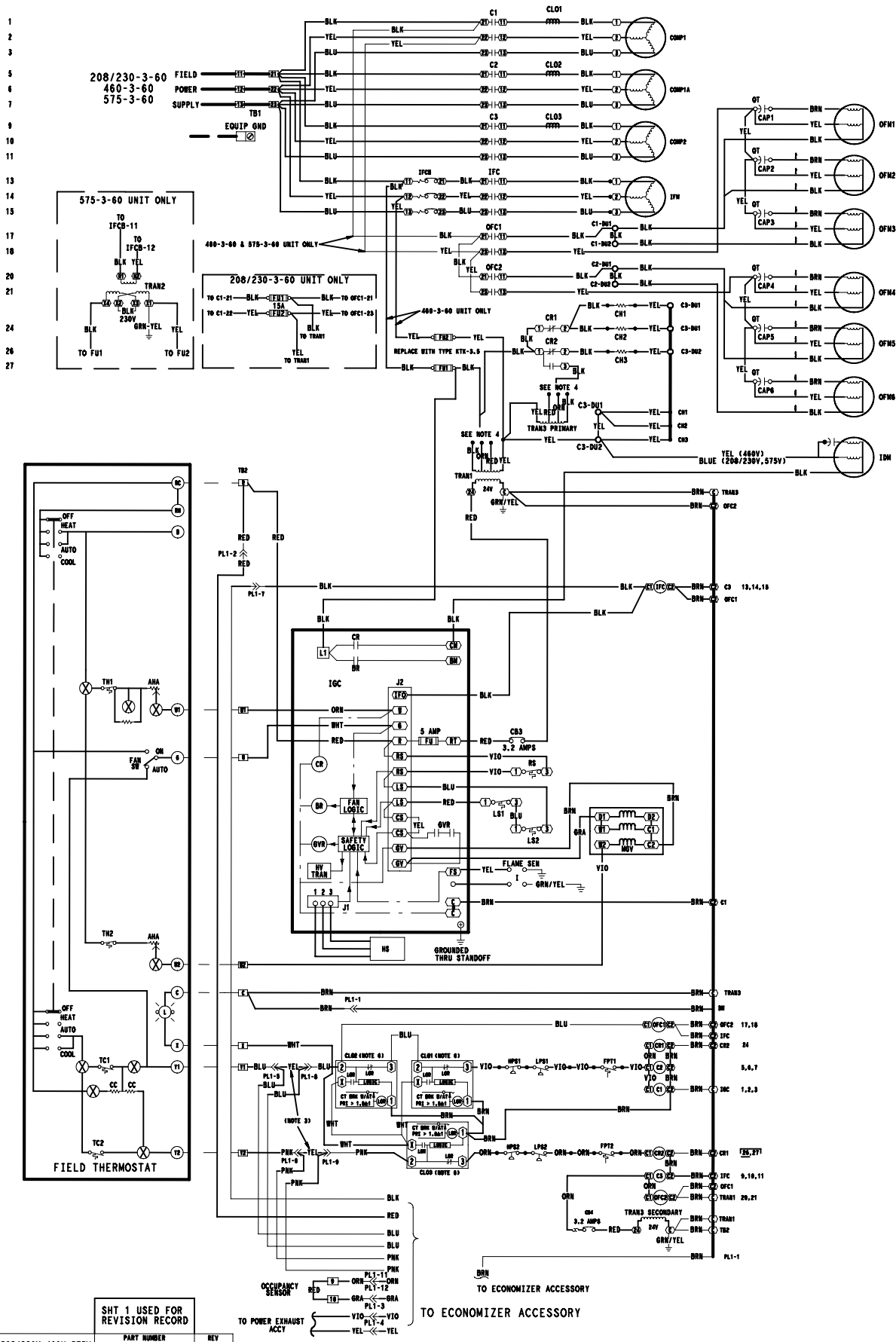
1. Direct interpolation is permissible. Do not extrapolate.
2. The following formulas may be used:
 - $t_{ldb} = t_{edb} - [\text{sensible capacity (Btuh)} / (1.10 \times \text{cfm})]$
 - $t_{lwb} = \text{Wet bulb temp corresponding to enthalpy of air leaving evaporator coil (h lwb)}.$
 - $h_{lwb} = h_{ewb} - [\text{total capacity Btuh} / (4.5 \times \text{cfm})]$
where h ewb = Enthalpy of air entering evapor. coil.

3. The SHC is based on 80° F edb temperature of air entering evaporator coil.
Below 80° F edb, subtract (corr factor x cfm) from SHC.
Above 80° F edb, add (corr factor x cfm) to SHC.

Bypass Factor (BF)	ENTERING AIR DRY-BULB TEMP (edb) (°F)						Use Formula Below
	79	78	77	76	75	under 75	
	81	82	83	84	85	over 85	
Correction Factor							
0.05	1.04	2.07	3.11	4.14	5.18		
0.10	0.98	1.96	2.94	3.92	4.91		
0.20	0.87	1.74	2.62	3.49	4.36		
0.30	0.76	1.53	2.29	3.05	3.82		
0.40	0.65	1.31	1.96	2.62	3.27		
0.50	0.55	1.09	1.64	2.18	2.73		
0.60	0.44	0.87	1.31	1.74	2.18		
0.70	0.33	0.65	0.98	1.31	1.64		

Interpolation is permissible.
Correction factor = $1.10 \times (1 - BF) \times (edb - 80)$.

SCHEMATIC



SHT 1 USED FOR REVISION RECORD

208/230V, 460V, 575V PGE300H, L, S	PART NUMBER 48TJ500895 SHT 2 OF 3	REV 2.0
---------------------------------------	--	-------------------

ALL VOLTS - ALL MODELS