

# Parts List, Charging Chart, Wiring Diagrams

**PGD3 30 – 60 SERIES**

**3 Phase**

**R-410A PACKAGE GAS ELECTRIC  
UNITS**



## TABLE OF CONTENTS

PARTS LIST	2-15
PARTS DRAWING	16-31
CHARGING CHART	32
WIRING DIAGRAM	33-38

**PGD3 30 & 36 ( 208 / 230 ) PARTS LIST**

KEY NO.	DESCRIPTION	FAST PARTS NO.	PGD330040H00A1	PGD330040H01A1	PGD330060H00A1	PGD330060H10A1	PGD336060H00A1	PGD336060H01A1	PGD336090H00A1	PGD336090H01A1
01	COMP ZP24K5E-TF5-130	ZP24K5ETF5130	1	1	1	1	*	*	*	*
01	COMP ZP29K5E-TF5-130	1176858	*	*	*	*	1	1	1	1
02	COIL ASY OUTDOOR 30 AL LF	1176847	1	1	1	1	*	*	*	*
02	COIL ASY OUTDOOR 36 AL LF	1176849	*	*	*	*	1	1	1	1
03	COIL ASY OUTDOOR 30 AL RT	1176848	1	1	1	1	*	*	*	*
03	COIL ASY OUTDOOR 36 AL RT	1176850	*	*	*	*	1	1	1	1
04	COIL ASY INDOOR 30	1176842	1	1	1	1	*	*	*	*
04	COIL ASY INDOOR 36	1176843	*	*	*	*	1	1	1	1
05	MTR BLW 1/3 1050 230V 1PH	1175967	1	1	1	1	*	*	*	*
05	MTR BLW 1/2 1075 230V 1PH	1176037	*	*	*	*	1	1	1	1
06	MTR CND 1/230 1/8 825/1	1173699	1	1	1	1	*	*	*	*
06	MTR CND 1/230 1/8 825/1	1175625	*	*	*	*	1	1	1	1
07	FAN C 22" 3B 1/2" 18 INT	1176866	1	1	1	1	*	*	*	*
07	FAN C 22" 3B 1/2" 28 INT	1171219	*	*	*	*	1	1	1	1
08	CAP RN OV 370V 5	1172149	1	1	1	1	1	1	1	1
09	CAP RN OV 370V 4	1175500	1	1	1	1	1	1	1	1
10	CONTACTOR 2P 20A 24V	1171160	1	1	1	1	1	1	1	1
11	CAP RN OV 370V 15	1172505	1	1	1	1	1	1	1	1
12	MODULE IGN UT 1068-11	1171166	1	1	1	1	1	1	1	1
13	TRANS 208/230>24 40VA	1173691	1	1	1	1	1	1	1	1
14	WHEEL DD 10X10 CW	1175970	1	1	1	1	1	1	1	1
15	WHEEL DD 5 1/4X1 CCW	1175971	1	1	1	1	1	1	1	1
16	DISTRIBUTOR 4 CKT	1174359	1	1	1	1	1	1	1	1
18	SWITCH LMT 225-50	1171484	2	2	2	2	2	2	2	2
20	SWITCH PRESS LO O20 C45	1174412	1	1	1	1	1	1	1	1
21	SENSOR ASY	1175973	1	1	1	1	1	1	1	1
22	INGNITER ASY	1175974	1	1	1	1	1	1	1	1
23	MANIFOLD 2 BURNER	1175975	1	1	1	1	1	1	*	*
23	MANIFOLD 3 BURNER	1176040	*	*	*	*	*	*	1	1
24	BURNER ASY	1171095	2	2	2	2	2	2	2	2
25	BURNER ASY	1171087	*	*	*	*	*	*	1	1
26	RING INSERT	1171439	2	2	2	2	2	2	3	3
27	VALVE GAS	1175976	1	1	1	1	1	1	1	1
28	ORIFICE MAIN 44	1175977	2	2	*	*	*	*	*	*
28	ORIFICE MAIN 38	1172235	*	*	2	2	2	2	3	3
29	MOTOR ASY IDF 230V	1175978	1	1	1	1	1	1	1	1
30	SENSOR HALL EFFECT	1171450	1	1	1	1	1	1	1	1
31	MOTOR IDF 1/16,3450,230V 1 PH	1175979	1	1	1	1	1	1	1	1
32	MOUNTING KIT BLW MTR	1175958	1	1	1	1	1	1	1	1
33	TUBE ASY HT EX 40K BTU	1175980	1	*	*	*	*	*	*	*
33	TUBE ASY HT EX 40K BTU LWNX	1175981	*	1	*	*	*	*	*	*
33	TUBE ASY HT EX 60K BTU	1175982	*	*	1	*	1	*	*	*
33	TUBE ASY HT EX 60K BTU LWNX	1175983	*	*	*	1	*	1	*	*
33	TUBE ASY HT EX 90K BTU	1176041	*	*	*	*	*	*	1	*
33	TUBE ASY HT EX 90K BTU LWNX	1176042	*	*	*	*	*	*	*	1
35	BAFFLE FLUE 40K	1175984	1	*	*	*	*	*	*	*

**PGD3 30 & 36 ( 208 / 230 ) PARTS LIST (continued)**

KEY NO.	DESCRIPTION	FAST PARTS NO.	PGD330040H00A1	PGD330040H01A1	PGD330060H00A1	PGD330060H10A1	PGD336060H00A1	PGD336060H01A1	PGD336090H00A1	PGD336090H01A1
			*	1	*	*	*	*	*	*
35	BAFFLE FLUE 40K LWNX	1175985	*	1	*	*	*	*	*	*
35	BAFFLE FLUE 60K	1175986	*	*	1	*	1	*	*	*
35	BAFFLE FLUE 60K LWNX	1175632	*	*	*	1	*	1	*	*
35	BAFFLE FLUE 80/90K BTU	1176043	*	*	*	*	*	*	1	*
35	BAFFLE FLUE 80/90K BTU LWNX	1176044	*	*	*	*	*	*	*	1
36	BAFFLE LOW NOX	1175987	*	2	*	2	*	2	*	3
37	PLUG COMPRESSOR	1176033	1	1	1	1	1	1	1	1
38	HTR CC WP 40W 240V TCH268	1176161	*	*	*	*	1	1	1	1
39	VALVE TXV 3.0 TON R410A	1176868	1	1	1	1	*	*	*	*
39	VALVE TXV 3.0 TON R410A	1176869	*	*	*	*	1	1	1	1
40	SWITCH PRESS HI O650 C420	1174407	1	1	1	1	1	1	1	1
41	DRIER LIQ 08 CU IN 3/8 SWEAT	1173679	1	1	1	1	1	1	1	1
50	SWITCH LMT 160-100	1175972	1	1	1	1	1	1	*	*
50	SWITCH TEMP 165F	1176039	*	*	*	*	*	*	1	1
A	RACEWAY	1171428	1	1	1	1	1	1	1	1
B	INSULATION ASY TOP EVAP	1175988	1	1	1	1	1	1	1	1
C	BASE PAN ASY	1175989	1	1	1	1	1	1	1	1
D	COVER ASY DUCT	1175990	2	2	2	2	2	2	2	2
E	TOP CONDENSER	1175991	1	1	1	1	1	1	1	1
F	PARTITION COIL	1175992	1	1	1	1	1	1	1	1
G	PARTITION FAN	1175993	1	1	1	1	1	1	1	1
H	PANEL REAR DUCT	1175994	1	1	1	1	1	1	1	1
J	PANEL COMP SIDE	1175995	1	1	1	1	1	1	1	1
K	PANEL ACCESS	1175996	1	1	1	1	1	1	1	1
L	INSULATION ACCESS PANEL	1175997	1	1	1	1	1	1	1	1
M	INSULATION PANEL COMP	1175998	1	1	1	1	1	1	1	1
N	GRILLE OUTLET	1171267	1	1	1	1	1	1	1	1
P	GROMMET COMPRESSOR 1.62"DIA	1171270	4	4	4	4	4	4	4	4
Q	CAP HOOD	1175999	1	1	1	1	1	1	1	1
R	PLATE INSULATION	1176000	1	1	1	1	1	1	1	1
S	INSULATION ASY FLUE BOX	1176001	1	1	1	1	1	1	1	1
T	INSULATION FLUE COVER	1176002	1	1	1	1	1	1	1	1
V	SHEILD	1176003	1	1	1	1	1	1	1	1
W	INSULATION FLUE COVER	1176004	1	1	1	1	1	1	1	1
X	PANEL GAS SIDE	1176005	1	1	1	1	1	1	1	1
Y	INSULATION PANEL GAS SIDE	1176006	1	1	1	1	1	1	1	1
Z	CONTROL BOX	1176007	1	1	1	1	1	1	1	1
AA	INSULATION FAN PARTITION	1176008	1	1	1	1	1	1	1	1
AD	SHEILD HEAT	1176009	1	1	1	1	1	1	1	1
AE	SCROLL BLW	1176010	1	1	1	1	1	1	1	1
AF	PLATE ASY BLW SIDE	1176011	1	1	1	1	1	1	1	1
AH	PLATE BLW	1176012	1	1	1	1	1	1	1	1
AJ	CLAMP CAPACITOR OVAL	1171552	2	2	2	2	2	2	2	2
AK	GRILLE ASY 14"	1176079	1	1	1	1	*	*	*	*
AK	GRILLE ASY 16"	1176017	*	*	*	*	1	1	1	1
AL	GRILLE ASY 14"	1176163	1	1	1	1	*	*	*	*

**PGD3 30 & 36 ( 208 / 230 ) PARTS LIST (continued)**

KEY NO.	DESCRIPTION	FAST PARTS NO.	PGD330040H00A1	PGD330040H01A1	PGD330060H00A1	PGD330060H10A1	PGD336060H00A1	PGD336060H01A1	PGD336090H00A1	PGD336090H01A1
AL	GRILLE ASY 16"	1176018	*	*	*	*	1	1	1	1
AM	GRILLE ASY 14"	1176164	1	1	1	1	*	*	*	*
AM	GRILLE ASY 16"	1176019	*	*	*	*	1	1	1	1
AN	GRILLE ASY 14"	1176165	1	1	1	1	*	*	*	*
AN	GRILLE ASY 16"	1176020	*	*	*	*	1	1	1	1
AP	PANEL CORNER 14" COND	1176022	3	3	3	3	*	*	*	*
AP	PANEL CORNER 16" COND	1176045	*	*	*	*	3	3	3	3
AQ	BRACKET SUPPORT	1176023	4	4	4	4	4	4	4	4
AR	PANEL CORNER 14" HEADER	1176025	1	1	1	1	*	*	*	*
AR	PANEL CORNER HEADER	1176046	*	*	*	*	1	1	1	1
AS	PARTION COIL EVAP	1176026	1	1	1	1	1	1	1	1
AT	SUPPORT BURNER	1176027	1	1	1	1	1	1	1	1
AV	BRACKET BURNER	1176028	1	1	1	1	1	1	*	*
AV	BRACKET BURNER	1176047	*	*	*	*	*	*	1	1
AW	ANGLE BLOCK OFF	1176029	1	1	*	*	*	*	*	*
AW	BRACKET SWITCH	1176031	*	*	1	1	1	1	1	1
AX	HOUSING FAN IDM	1176030	1	1	1	1	1	1	1	1
AZ	BARRIER 24V	1176032	1	1	1	1	1	1	1	1
BC	PARTION COIL EVAP	1176783	1	1	1	1	1	1	1	1
BD	SUPPORT BLOWER	1176784	1	1	1	1	1	1	1	1
BE	SHIELD BASEPAN	1176794	1	1	1	1	1	1	1	1
BF	INSULATION RETURN DUCT PANEL	1176151	1	1	1	1	1	1	1	1
BG	COMPRESSOR MTG BOLT	1176731	4	4	4	4	4	4	4	4
BH	INSULATION COIL PARTITION	1176152	1	1	1	1	1	1	1	1
BJ	INSULATION COIL PARTITION	1176785	1	1	1	1	1	1	1	1
BK	GROMMET	1176613	1	1	1	1	1	1	1	1
PARTS NOT SHOWN										
)	HARNESS ASY 208/230V	1175959	1	1	1	1	1	1	1	1
)	WIRE ASY INGNITION	1175969	1	1	1	1	1	1	1	1
)	WIRE IGNITION	1175498	1	1	1	1	1	1	1	1
)	STD ALTD LP CONV ( 0-2000 FT )	1177450	1	1	1	1	1	1	1	1
)	HIGH ALTD LP CONV ( ABOVE 2000 FT )	1177451	1	1	1	1	1	1	1	1
)	LP TO NG CONV	1177452	1	1	1	1	1	1	1	1

**PGD3 36 ( 460 ) PARTS LIST**

KEY NO.	DESCRIPTION	FAST PARTS NO.	PGD336060L00A1	PGD336060L01A1	PGD336090L00A1	PGD336090L01A1
01	COMP ZP29K5E-TFD-130	1176859	1	1	1	1
02	COIL ASY OUTDOOR 36 AL LF	1176849	1	1	1	1
03	COIL ASY OUTDOOR 36 AL RT	1176850	1	1	1	1
04	COIL ASY INDOOR 36	1176843	1	1	1	1
05	MTR BLW 1/2 1075 460V 1PH	1176049	1	1	1	1
06	MTR CND 1/8 825 460V 1 PH	1176050	1	1	1	1
07	FAN C 22" 3B 1/2" 28 INT	1171219	1	1	1	1
08	CAP RN OV 370V 5	1172149	1	1	1	1
09	CAP RN OV 370V 4	1175500	1	1	1	1
10	CONTACTOR 2P 20A 24V	1171160	1	1	1	1
11	CAP RN OV 370V 15	1172505	1	1	1	1
12	MODULE IGN UT 1068-12	1171165	1	1	1	1
13	TRANS 460>24 40VA	1175310	1	1	1	1
14	WHEEL DD 10X10 CW	1175970	1	1	1	1
15	WHEEL DD 5 1/4X1 CCW	1175971	1	1	1	1
16	DISTRIBUTOR 4 CKT	1174359	1	1	1	1
18	SWITCH LMT 225-50	1171484	2	2	2	2
20	SWITCH PRESS LO O20 C45	1174412	1	1	1	1
21	SENSOR ASY	1175973	1	1	1	1
22	IGNITER ASY	1175974	1	1	1	1
23	MANIFOLD 2 BURNER	1175975	1	1	*	*
23	MANIFOLD 3 BURNER	1176040	*	*	1	1
24	BURNER ASY	1171095	2	2	2	2
25	BURNER ASY	1171087	*	*	1	1
26	RING INSERT	1171439	2	2	3	3
27	VALVE GAS	1175976	1	1	1	1
28	ORIFICE MAIN 38	1172235	2	2	3	3
29	BLW ASY (IDF) 460V 1	1176051	1	1	1	1
30	SENSOR HALL EFFECT	1171450	1	1	1	1
31	MTR IDF 1/16 3450 460V 1 PH	1176052	1	1	1	1
32	MOUNTING KIT BLW MTR	1175958	1	1	1	1
33	TUBE ASY HT EX 60K BTU	1175982	1	*	*	*
33	TUBE ASY HT EX 60K BTU LWNX	1175983	*	1	*	*
33	TUBE ASY HT EX 90K BTU	1176041	*	*	1	*
33	TUBE ASY HT EX 90K BTU LWNX	1176042	*	*	*	1
35	BAFFLE FLUE 60K	1175986	1	*	*	*
35	BAFFLE FLUE 60K LWNX	1175632	*	1	*	*
35	BAFFLE FLUE 80/90K BTU	1176043	*	*	1	*
35	BAFFLE FLUE 80/90K BTU LWNX	1176044	*	*	*	1
36	BAFFLE LOW NOX	1175987	*	2	*	3
37	PLUG COMPRESSOR	1176033	1	1	1	1
38	HTR CC WP 40 480V TCH268-3	1176867	1	1	1	1
39	VALVE TXV 3.0 TON R410A	1176869	1	1	1	1
40	SWITCH PRESS HI O650 C420	1174407	1	1	1	1
41	DRIER LIQ 08 CU IN 3/8 SWEAT	1173679	1	1	1	1
50	SWITCH LMT 160-100	1175972	1	1	*	*

**PGD3 36 ( 460 ) PARTS LIST (continued)**

KEY NO.	DESCRIPTION	FAST PARTS NO.	PGD336060L00A1	PGD336060L01A1	PGD336090L00A1	PGD336090L01A1
50	SWITCH TEMP 165F	1176039	*	*	1	1
A	RACEWAY	1171428	1	1	1	1
B	INSULATION ASY TOP EVAP	1175988	1	1	1	1
C	BASE PAN ASY	1175989	1	1	1	1
D	COVER ASY DUCT	1175990	2	2	2	2
E	TOP CONDENSER	1175991	1	1	1	1
F	PARTITION COIL	1175992	1	1	1	1
G	PARTITION FAN	1175993	1	1	1	1
H	PANEL REAR DUCT	1175994	1	1	1	1
J	PANEL COMP SIDE	1175995	1	1	1	1
K	PANEL ACCESS	1175996	1	1	1	1
L	INSULATION ACCESS PANEL	1175997	1	1	1	1
M	INSULATION PANEL COMP	1175998	1	1	1	1
N	GRILLE OUTLET	1171267	1	1	1	1
P	GROMMET COMPRESSOR 1.62"DIA	1171270	4	4	4	4
Q	CAP HOOD	1175999	1	1	1	1
R	PLATE INSULATION	1176000	1	1	1	1
S	INSULATION ASY FLUE BOX	1176001	1	1	1	1
T	INSULATION FLUE COVER	1176002	1	1	1	1
V	SHEILD	1176003	1	1	1	1
W	INSULATION FLUE COVER	1176004	1	1	1	1
X	PANEL GAS SIDE	1176005	1	1	1	1
Y	INSULATION PANEL GAS SIDE	1176006	1	1	1	1
Z	CONTROL BOX	1176007	1	1	1	1
AA	INSULATION FAN PARTITION	1176008	1	1	1	1
AD	SHEILD HEAT	1176009	1	1	1	1
AE	SCROLL BLW	1176010	1	1	1	1
AF	PLATE ASY BLW SIDE	1176011	1	1	1	1
AH	PLATE BLW	1176012	1	1	1	1
AJ	CLAMP CAPACITOR OVAL	1171552	2	2	2	2
AK	GRILLE ASY 16"	1176017	1	1	1	1
AL	GRILLE ASY 16"	1176018	1	1	1	1
AM	GRILLE ASY 16"	1176019	1	1	1	1
AN	GRILLE ASY 16"	1176020	1	1	1	1
AP	PANEL CORNER 16" COND	1176045	3	3	3	3
AQ	BRACKET SUPPORT	1176023	4	4	4	4
AR	PANEL CORNER HEADER	1176046	1	1	1	1
AS	PARTION COIL EVAP	1176026	1	1	1	1
AT	SUPPORT BURNER	1176027	1	1	1	1
AV	BRACKET BURNER	1176028	1	1	*	*
AV	BRACKET BURNER	1176047	*	*	1	1
AW	BRACKET SWITCH	1176031	1	1	1	1
AX	HOUSING FAN IDM	1176030	1	1	1	1
AZ	BARRIER 24V	1176032	1	1	1	1
BC	PARTION COIL EVAP	1176783	1	1	1	1
BD	SUPPORT BLOWER	1176784	1	1	1	1

**PGD3 36 ( 460 ) PARTS LIST (continued)**

KEY NO.	DESCRIPTION	FAST PARTS NO.	PGD336060L00A1	PGD336060L01A1	PGD336090L00A1	PGD336090L01A1
BE	SHIELD BASEPAN	1176794	1	1	1	1
BF	INSULATION RETURN DUCT PANEL	1176151	1	1	1	1
BG	COMPRESSOR MTG BOLT	1176731	4	4	4	4
BH	INSULATION COIL PARTITION	1176152	1	1	1	1
BJ	INSULATION COIL PARTITION	1176785	1	1	1	1
BK	GROMMET	1176613	1	1	1	1
PARTS NOT SHOWN						
)	HARNESS ASY 460V	1176048	1	1	1	1
)	WIRE ASY INGNITION	1175969	1	1	1	1
)	WIRE IGNITION	1175498	1	1	1	1
)	STD ALTD LP CONV ( 0-2000 FT )	1177450	1	1	1	1
)	HIGH ALTD LP CONV ( ABOVE 2000 FT )	1177451	1	1	1	1
)	LP TO NG CONV	1177452	1	1	1	1

**PGD3 42 - 60 ( 208 / 230 ) PARTS LIST**

KEY NO.	DESCRIPTION	FAST PARTS NO.	PGD342060H00A1	PGD342060H01A1	PGD342090H00A1	PGD342090H01A1	PGD348090H00A1	PGD348090H01A1	PGD348115H00A1	PGD348115H01A1	PGD348130H00A1	PGD348130H01A1	PGD360090H00A1	PGD360090H01A1	PGD360115H00A1	PGD360115H01A1	PGD360130H00A1	PGD360130H01A1
01	COMP ZP36K5E-TF5-130	ZP36K5ETF5130	1	1	1	1	*	*	*	*	*	*	*	*	*	*	*	*
01	COMP ZP42K5E-TF5-130	ZP42K5ETF5130	*	*	*	*	1	1	1	1	1	1	*	*	*	*	*	*
01	COMP ZP51K5E-TF5-130	ZP51K5ETF5130	*	*	*	*	*	*	*	*	*	*	1	1	1	1	1	1
02	COIL ASY OUTDOOR 42 (LF) AL	1176851	1	1	1	1	*	*	*	*	*	*	*	*	*	*	*	*
02	COIL ASY OUTDOOR 48 (LF) AL	1176853	*	*	*	*	1	1	1	1	1	1	*	*	*	*	*	*
02	COIL ASY OUTDOOR 60 (LF) AL	1176855	*	*	*	*	*	*	*	*	*	*	1	1	1	1	1	1
03	COIL ASY OUTDOOR 42 (RT) AL	1176852	1	1	1	1	*	*	*	*	*	*	*	*	*	*	*	*
03	COIL ASY OUTDOOR 48 (RT) AL	1176854	*	*	*	*	1	1	1	1	1	1	*	*	*	*	*	*
03	COIL ASY OUTDOOR 60 (RT) AL	1176856	*	*	*	*	*	*	*	*	*	*	1	1	1	1	1	1
04	COIL ASY INDOOR (42)	1176844	1	1	1	1	*	*	*	*	*	*	*	*	*	*	*	*
04	COIL ASY INDOOR (48)	1176845	*	*	*	*	1	1	1	1	1	1	*	*	*	*	*	*
04	COIL ASY INDOOR (60)	1176846	*	*	*	*	*	*	*	*	*	*	1	1	1	1	1	1
05	MOTOR BLW 1/2,1075,230V 1PH	1176037	1	1	1	1	1	1	1	1	1	1	*	*	*	*	*	*
05	MOTOR BLW 1,1040/3SP,230V 1PH	1176130	*	*	*	*	*	*	*	*	*	*	1	1	1	1	1	1
06	MOTOR CND 1/230 1/8 825/1	1175625	1	1	1	1	*	*	*	*	*	*	*	*	*	*	*	*
06	MTR CND 1/230 1/4	1171335	*	*	*	*	1	1	1	1	1	1	1	1	1	1	1	1
07	FAN C 22" 3B 1/2" 28 INT	1171219	1	1	1	1	*	*	*	*	*	*	1	1	1	1	1	1
07	FAN C 22" 3B 1/2" 24 INT	1171220	*	*	*	*	1	1	1	1	1	1	*	*	*	*	*	*
08	CAP RN OV 370V 5	1172149	1	1	1	1	*	*	*	*	*	*	*	*	*	*	*	*
08	CAP RN OV 370V 10	1171807	*	*	*	*	1	1	1	1	1	1	1	1	1	1	1	1
09	CAPACITOR 370V	1175500	1	1	1	1	1	1	1	1	1	1	1	1	1	1	1	1
10	CONTACTOR 2P 20A 24V	1171160	1	1	1	1	*	*	*	*	*	*	*	*	*	*	*	*
10	CONTACTOR 2P 25A 24V	1174905	*	*	*	*	1	1	1	1	1	1	1	1	1	1	1	1
11	CAP RN OV 370V 15	1172505	1	1	1	1	1	1	1	1	1	1	*	*	*	*	*	*
11	CAP RN OV 370V 25	1176131	*	*	*	*	*	*	*	*	*	*	1	1	1	1	1	1
12	MODULE IGN UT 1068-11	1171166	1	1	1	1	1	1	1	1	1	1	1	1	1	1	1	1
13	TRANS 208/230>24 40VA	1173691	1	1	1	1	1	1	1	1	1	1	1	1	1	1	1	1
14	WHEEL BLW 11X10 CW	1176057	1	1	1	1	1	1	1	1	1	1	1	1	1	1	1	1
15	WHEEL DD 5 1/4X1 CCW	1175971	1	1	1	1	1	1	1	1	*	*	1	1	1	1	1	1
15	WHEEL DD 5 3/4X1 CCW	1175873	*	*	*	*	*	*	*	*	1	1	*	*	*	*	1	1
16	DISTRIBUTOR 6 CKT	1175220	1	1	1	1	1	1	1	1	1	1	*	*	*	*	*	*
16	DISTRIBUTOR 8 CKT	1174244	*	*	*	*	*	*	*	*	*	*	1	1	1	1	1	1
18	SWITCH LMT 225-50	1171484	1	1	1	1	1	1	1	1	1	1	1	1	1	1	1	1
20	SWITCH PRESS LO O20 C45	1174412	1	1	1	1	1	1	1	1	1	1	1	1	1	1	1	1
21	SENSOR ASY	1175973	1	1	1	1	1	1	1	1	1	1	1	1	1	1	1	1
22	INGNITER ASY	1175974	1	1	1	1	1	1	1	1	1	1	1	1	1	1	1	1
23	MANIFOLD 2 BURNER	1176059	1	1	*	*	*	*	*	*	*	*	*	*	*	*	*	*
23	MANIFOLD 3 BURNER	1176089	*	*	1	1	1	1	1	1	1	1	1	1	1	1	1	1
24	BURNER ASY	1171095	2	2	2	2	2	2	2	2	2	2	2	2	2	2	2	2
25	BURNER ASY	1171087	*	*	1	1	1	1	1	1	1	1	1	1	1	1	1	1
26	RING INSERT	1171439	2	2	3	3	3	3	3	3	3	3	3	3	3	3	3	3
27	VALVE GAS	1175976	1	1	1	1	1	1	1	1	1	1	1	1	1	1	1	1
28	ORIFICE MAIN 38	1172235	2	2	3	3	3	3	*	*	*	*	3	3	*	*	*	*
28	ORIFICE MAIN 33	1172226	*	*	*	*	*	*	3	3	*	*	*	*	3	3	*	*
28	ORIFICE MAIN 31	1171462	*	*	*	*	*	*	*	*	3	3	*	*	*	*	3	3
29	MOTOR ASY IDF 460V	1176051	1	1	1	1	1	1	1	1	*	*	1	1	1	1	*	*



**PGD3 42 - 60 ( 208 / 230 ) PARTS LIST (continued)**

KEY NO.	DESCRIPTION	FAST PARTS NO.	PGD342060H00A1	PGD342060H01A1	PGD342090H00A1	PGD342090H01A1	PGD348090H00A1	PGD348090H01A1	PGD348115H00A1	PGD348115H01A1	PGD348130H00A1	PGD348130H01A1	PGD360090H00A1	PGD360090H01A1	PGD360115H00A1	PGD360115H01A1	PGD360130H00A1	PGD360130H01A1
			*	*	*	*	*	*	*	*	*	*	*	*	*	*	*	*
29	MOTOR ASY IDF 460V	1176126	*	*	*	*	*	*	*	*	1	1	*	*	*	*	1	1
30	SENSOR HALL EFFECT	1171450	1	1	1	1	1	1	1	1	1	1	1	1	1	1	1	1
31	MOTOR IDF 1/16,3450,230V 1 PH	1175979	1	1	1	1	1	1	1	1	1	1	1	1	1	1	1	1
32	MOUNTING KIT BLW MTR (42-60)	1176088	1	1	1	1	1	1	1	1	1	1	1	1	1	1	1	1
33	TUBE ASY HT EX 60K BTU	1175982	1	*	*	*	*	*	*	*	*	*	*	*	*	*	*	*
33	TUBE ASY HT EX 60K BTU LWNX	1175981	*	1	*	*	*	*	*	*	*	*	*	*	*	*	*	*
33	TUBE ASY HT EX 90K BTU	1176041	*	*	1	*	1	*	*	*	*	1	*	*	*	*	*	
33	TUBE ASY HT EX 90K BTU LWNX	1176042	*	*	*	1	*	1	*	*	*	*	1	*	*	*	*	
33	TUBE ASY HT EX 115/130K BTU	1176118	*	*	*	*	*	*	1	*	1	*	*	*	1	*	1	*
33	TUBE ASY HT EX 115/130K BTU LWNX	1176119	*	*	*	*	*	*	1	*	1	*	*	*	1	*	1	*
35	BAFFLE FLUE 60K	1175986	1	*	*	*	*	*	*	*	*	*	*	*	*	*	*	*
35	BAFFLE FLUE 60K LWNX	1175632	*	1	*	*	*	*	*	*	*	*	*	*	*	*	*	*
35	BAFFLE FLUE 80/90K BTU	1176043	*	*	1	*	1	*	*	*	*	1	*	*	*	*	*	*
35	BAFFLE FLUE 80/90K BTU LWNX	1176044	*	*	*	1	*	1	*	*	*	*	1	*	*	*	*	*
35	BAFFLE FLUE 115K BTU	1176120	*	*	*	*	*	*	1	*	*	*	*	*	1	*	*	*
35	BAFFLE FLUE 115K BTU LWNX	1175629	*	*	*	*	*	*	1	*	*	*	*	*	*	1	*	*
35	BAFFLE FLUE 130K BTU	1176122	*	*	*	*	*	*	*	1	*	*	*	*	*	*	1	*
35	BAFFLE FLUE 130K BTU LWNX	1175602	*	*	*	*	*	*	*	*	1	*	*	*	*	*	*	1
36	BAFFLE LWNX	1175987	*	2	*	3	*	3	*	3	*	3	*	3	*	3	*	3
37	PLUG COMPRESSOR	1176033	1	1	1	1	1	1	1	1	1	1	1	1	1	1	1	1
38	HEATER CRANKCASE 40W 240V	1176105	*	*	*	*	1	1	1	1	1	1	1	1	1	1	1	1
39	VALVE TXV 4.0 TON R410A	1176870	1	1	1	1	1	1	1	1	1	1	*	*	*	*	*	
39	VALVE TXV 6.0 TON R410A	1176871	*	*	*	*	*	*	*	*	*	1	1	1	1	1	1	1
40	SWITCH PRESS HI O650 C420	1174407	1	1	1	1	1	1	1	1	1	1	1	1	1	1	1	1
41	DRIER LIQ 08 CU IN 3/8 SWEAT	1173679	1	1	1	1	1	1	1	1	1	1	1	1	1	1	1	1
50	SWITCH TEMP 160F	1175972	1	1	*	*	*	*	*	*	*	*	*	*	*	*	*	*
50	SWITCH TEMP 165F	1176039	*	*	1	1	*	*	*	*	*	*	*	*	*	*	*	*
50	SWITCH TEMP 155F	1176103	*	*	*	*	1	1	*	*	*	*	1	1	*	*	*	*
50	SWITCH TEMP 135F	1176115	*	*	*	*	*	*	1	1	*	*	*	*	1	1	*	*
50	SWITCH TEMP 140F	1176116	*	*	*	*	*	*	*	1	1	*	*	*	*	1	1	1
A	RACEWAY	1171428	1	1	1	1	1	1	1	1	1	1	1	1	1	1	1	1
B	INSULATION ASY TOP	1176083	1	1	1	1	1	1	1	1	1	1	1	1	1	1	1	1
C	BASE PAN ASY	1176061	1	1	1	1	1	1	1	1	1	1	1	1	1	1	1	1
D	COVER ASY DUCT	1176062	2	2	2	2	2	2	2	2	2	2	2	2	2	2	2	2
E	TOP COND	1176063	1	1	1	1	1	1	1	1	1	1	1	1	1	1	1	1
F	PARTITION COIL RETURN	1176064	1	1	1	1	1	1	1	1	1	1	1	1	1	1	1	1
G	PARTITION FAN	1176065	1	1	1	1	1	1	1	1	1	1	1	1	1	1	1	1
H	PANEL REAR DUCT	1176066	1	1	1	1	1	1	1	1	1	1	1	1	1	1	1	1
J	PANEL SIDE COMP	1176067	1	1	1	1	1	1	1	1	1	1	1	1	1	1	1	1
K	PANEL ACCESS	1176068	1	1	1	1	1	1	1	1	1	1	1	1	1	1	1	1
L	INSULATION PANEL ACCESS	1176069	1	1	1	1	1	1	1	1	1	1	1	1	1	1	1	1
M	INSULATION PANEL COMP SIDE	1176070	1	1	1	1	1	1	1	1	1	1	1	1	1	1	1	1
N	GRILLE OUTLET	1171267	1	1	1	1	1	1	1	1	1	1	1	1	1	1	1	1
P	GROMMET COMPRESSOR 1.62"DIA	1171270	4	4	4	4	4	4	4	4	4	4	4	4	4	4	4	4
Q	CAP HOOD	1175999	1	1	1	1	1	1	1	1	1	1	1	1	1	1	1	1
R	PLATE INSULATION	1176000	1	1	1	1	1	1	1	1	1	1	1	1	1	1	1	1

PGD3 42 - 60 ( 208 / 230 ) PARTS LIST (continued)

KEY NO.	DESCRIPTION	FAST PARTS NO.	PGD342060H00A1	PGD342060H01A1	PGD342090H00A1	PGD342090H01A1	PGD348090H00A1	PGD348090H01A1	PGD348115H00A1	PGD348115H01A1	PGD348130H00A1	PGD348130H01A1	PGD360090H00A1	PGD360090H01A1	PGD360115H00A1	PGD360115H01A1	PGD360130H00A1	PGD360130H01A1
S	INSULATION ASY FLUE BOX	1176001	1	1	1	1	1	1	*	*	*	*	*	*	*	*	*	*
S	INSULATION ASY FLUE BOX	1176124	*	*	*	*	*	*	1	1	1	1	1	1	1	1	1	1
T	INSULATION FLUE COVER	1176002	1	1	1	1	1	1	1	1	1	1	1	1	1	1	1	1
V	SHEILD	1176003	1	1	1	1	1	1	1	1	1	1	1	1	1	1	1	1
W	INSULATION FLUE COVER	1176004	1	1	1	1	1	1	1	1	1	1	1	1	1	1	1	1
X	PANEL SIDE GAS	1176071	1	1	1	1	1	1	1	1	1	1	1	1	1	1	1	1
Y	INSULATION PANEL GAS SIDE	1176072	1	1	1	1	1	1	1	1	1	1	1	1	1	1	1	1
Z	CONTROL BOX	1176007	1	1	1	1	1	1	1	1	1	1	1	1	1	1	1	1
AA	INSULATION FAN PARTITION	1176073	1	1	1	1	1	1	1	1	1	1	1	1	1	1	1	1
AE	SCROLL	1176074	1	1	1	1	1	1	1	1	1	1	1	1	1	1	1	1
AF	PLATE ASY FAN SIDE	1176075	1	1	1	1	1	1	1	1	1	1	1	1	1	1	1	1
AH	PLATE FAN BOTTOM	1176077	1	1	1	1	1	1	1	1	1	1	1	1	1	1	1	1
AJ	CLAMP CAPACITOR OVAL	1171552	2	2	2	2	2	2	2	2	2	2	1	1	1	1	1	1
AJ	CLAMP CAPACITOR OVAL	1176134	*	*	*	*	*	*	*	*	*	*	1	1	1	1	1	1
AK	GRILLE ASY 16"	1176173	1	1	1	1	1	1	1	1	1	1	*	*	*	*	*	*
AK	GRILLE ASY 20"	1176106	*	*	*	*	*	*	*	*	*	*	1	1	1	1	1	1
AL	GRILLE ASY 16"	1176017	2	2	2	2	2	2	2	2	2	2	*	*	*	*	*	*
AL	GRILLE ASY 20"	1176107	*	*	*	*	*	*	*	*	*	*	2	2	2	2	2	2
AM	GRILLE ASY 16"	1176174	1	1	1	1	1	1	1	1	1	1	*	*	*	*	*	*
AM	GRILLE ASY 20"	1176108	*	*	*	*	*	*	*	*	*	*	1	1	1	1	1	1
AP	PANEL CORNER 16" COND	1176045	2	2	2	2	2	2	2	2	2	2	*	*	*	*	*	*
AP	PANEL CORNER 20" COND	1176109	*	*	*	*	*	*	*	*	*	*	2	2	2	2	2	2
AQ	BRACKET SUPPORT 10"	1176023	4	4	4	4	4	4	4	4	4	4	*	*	*	*	*	*
AQ	BRACKET SUPPORT 16"	1176110	*	*	*	*	*	*	*	*	*	*	4	4	4	4	4	4
AR	PANEL CORNER 16" HEADER	1176046	1	1	1	1	1	1	1	1	1	1	*	*	*	*	*	*
AR	PANEL CORNER 20" HEADER	1176111	*	*	*	*	*	*	*	*	*	*	1	1	1	1	1	1
AS	PARTITION COIL EVAP	1176081	1	1	1	1	*	*	*	*	*	*	*	*	*	*	*	*
AS	PARTITION COIL EVAP	1176112	*	*	*	*	1	1	1	1	1	1	1	1	1	1	1	1
AT	SUPPORT BURNER	1176027	1	1	1	1	1	1	1	1	1	1	1	1	1	1	1	1
AV	BRACKET BURNER	1176028	1	1	*	*	*	*	*	*	*	*	*	*	*	*	*	*
AV	BRACKET BURNER	1176047	*	*	1	1	1	1	1	1	1	1	1	1	1	1	1	1
AX	HOUSING FAN IDM	1176030	1	1	1	1	1	1	1	1	1	1	1	1	1	1	1	1
AW	BRACKET SWITCH	1176031	1	1	1	1	1	1	1	1	1	1	1	1	1	1	1	1
AZ	BARRIER 24V	1176032	1	1	1	1	1	1	1	1	1	1	1	1	1	1	1	1
BA	PANEL CORNER 16"	1176734	1	1	1	1	1	1	1	1	1	1	*	*	*	*	*	*
BA	PANEL CORNER 20" HAIRPIN	1176113	*	*	*	*	*	*	*	*	*	*	1	1	1	1	1	1
BB	SUPPORT BLOWER	1176085	1	1	1	1	1	1	1	1	1	1	1	1	1	1	1	1
BC	PARTITION COIL SUPPLY	1176084	1	1	1	1	1	1	1	1	1	1	1	1	1	1	1	1
BD	SUPPORT BLOWER	1176784	1	1	1	1	1	1	1	1	1	1	1	1	1	1	1	1
BE	SHEILD BASE PAN	1176086	1	1	1	1	1	1	1	1	1	1	1	1	1	1	1	1
BF	INSULATION RETURN DUCT PANEL	1176087	1	1	1	1	1	1	1	1	1	1	1	1	1	1	1	1
BG	COMPRESSOR MTG BOLT	1176731	4	4	4	4	4	4	4	4	4	4	4	4	4	4	4	4
BH	INSULATION COIL PARTITION	1176153	1	1	1	1	1	1	1	1	1	1	1	1	1	1	1	1
BJ	INSULATION COIL PARTITION	1176786	1	1	1	1	1	1	1	1	1	1	1	1	1	1	1	1
BK	GROMMET	1176613	1	1	1	1	1	1	1	1	1	1	1	1	1	1	1	1
BL	PARTITION COIL EVAP	1176114	*	*	*	*	1	1	1	1	1	1	1	1	1	1	1	1

**PGD3 42 - 60 ( 208 / 230 ) PARTS LIST (continued)**

KEY NO.	DESCRIPTION	FAST PARTS NO.	PGD342060H00A1	PGD342060H01A1	PGD342090H00A1	PGD342090H01A1	PGD348090H00A1	PGD348090H01A1	PGD348115H00A1	PGD348115H01A1	PGD348130H00A1	PGD348130H01A1	PGD360090H00A1	PGD360090H01A1	PGD360115H00A1	PGD360115H01A1	PGD360130H00A1	PGD360130H01A1
PARTS NOT SHOWN																		
)	HARNESS ASY 208/230V	1175959	1	1	1	1	1	1	1	1	1	1	1	1	1	1	1	1
)	WIRE ASY INGNITION	1175969	1	1	1	1	1	1	1	1	1	1	1	1	1	1	1	1
)	WIRE IGNITION	1175498	1	1	1	1	1	1	1	1	1	1	1	1	1	1	1	1
)	STD ALTD LP CONV ( 0-2000 FT )	1177450	1	1	1	1	1	1	1	1	1	1	1	1	1	1	1	1
)	HIGH ALTD LP CONV ( ABOVE 2000 FT )	1177451	1	1	1	1	1	1	1	1	1	1	1	1	1	1	1	1
)	LP TO NG CONV	1177452	1	1	1	1	1	1	1	1	1	1	1	1	1	1	1	1

**PGD3 42 - 60 ( 460 ) PARTS LIST**

KEY NO.	DESCRIPTION	FAST PARTS NO.	PGD342060L00A1	PGD342060L01A1	PGD342090L00A1	PGD342090L01A1	PGD348090L00A1	PGD348090L01A1	PGD348115L00A1	PGD348115L01A1	PGD348130L00A1	PGD348130L01A1	PGD360090L00A1	PGD360090L01A1	PGD360115L00A1	PGD360115L01A1	PGD360130L00A1	PGD360130L01A1
01	COMP ZP36K5E-TFD-130	1176861	1	1	1	1	*	*	*	*	*	*	*	*	*	*	*	*
01	COMP ZP42K5E-TFD-130	1176863	*	*	*	*	1	1	1	1	1	1	*	*	*	*	*	*
01	COMP ZP51K5E-TFD-130	ZP51K5ETFD130	*	*	*	*	*	*	*	*	*	*	1	1	1	1	1	1
02	COIL ASY OUTDOOR 42 (LF) AL	1176851	1	1	1	1	*	*	*	*	*	*	*	*	*	*	*	*
02	COIL ASY OUTDOOR 48 (LF) AL	1176853	*	*	*	*	1	1	1	1	1	1	*	*	*	*	*	*
02	COIL ASY OUTDOOR 60 (LF) AL	1176855	*	*	*	*	*	*	*	*	*	*	1	1	1	1	1	1
03	COIL ASY OUTDOOR 42 (RT) AL	1176852	1	1	1	1	*	*	*	*	*	*	*	*	*	*	*	*
03	COIL ASY OUTDOOR 48 (RT) AL	1176854	*	*	*	*	1	1	1	1	1	1	*	*	*	*	*	*
03	COIL ASY OUTDOOR 60 (RT) AL	1176856	*	*	*	*	*	*	*	*	*	*	1	1	1	1	1	1
04	COIL ASY INDOOR (42)	1176844	1	1	1	1	*	*	*	*	*	*	*	*	*	*	*	*
04	COIL ASY INDOOR (48)	1176845	*	*	*	*	1	1	1	1	1	1	*	*	*	*	*	*
04	COIL ASY INDOOR (60)	1176846	*	*	*	*	*	*	*	*	*	*	1	1	1	1	1	1
05	MTR BLW 1/460 1/2 1075	1176049	1	1	1	1	1	1	1	1	1	1	*	*	*	*	*	*
05	MTR BLW 1/460 1 3SP/1040	1176135	*	*	*	*	*	*	*	*	*	*	1	1	1	1	1	1
06	MTR CND 1/460 1/8 825	1176050	1	1	1	1	*	*	*	*	*	*	*	*	*	*	*	*
06	MTR CND 1/460 1/4 1100	1175525	*	*	*	*	1	1	1	1	1	1	1	1	1	1	1	1
07	FAN C 22" 3B 1/2" 28 INT	1171219	1	1	1	1	*	*	*	*	*	*	1	1	1	1	1	1
07	FAN C 22" 3B 1/2" 24 INT	1171220	*	*	*	*	1	1	1	1	1	1	*	*	*	*	*	*
08	CAP RN OV 370V 5	1172149	1	1	1	1	1	1	1	1	1	1	*	*	*	*	*	*
08	CAP RN OV 370V 7.5	1176150	*	*	*	*	*	*	*	*	*	*	1	1	1	1	1	1
09	CAPACITOR 370V	1175500	1	1	1	1	1	1	1	1	1	1	1	1	1	1	1	1
10	CONTACTOR 2P 20A 24V	1171160	1	1	1	1	*	*	*	*	*	*	*	*	*	*	*	*
10	CONTACTOR 2P 25A 24V	1174905	*	*	*	*	1	1	1	1	1	1	1	1	1	1	1	1
11	CAP RN OV 370V 15	1172505	1	1	1	1	1	1	1	1	1	1	*	*	*	*	*	*
11	CAP RN OV 370V 25	1176131	*	*	*	*	*	*	*	*	*	*	1	1	1	1	1	1
12	MODULE IGN UT 1068-12	1171165	1	1	1	1	1	1	1	1	1	1	1	1	1	1	1	1
13	TRANS 460>24 40VA	1175310	1	1	1	1	1	1	1	1	1	1	1	1	1	1	1	1
14	WHEEL BLW 11X10 CW	1176057	1	1	1	1	1	1	1	1	1	1	1	1	1	1	1	1
15	WHEEL DD 5 1/4X1 CCW	1175971	1	1	1	1	1	1	1	1	*	*	1	1	1	1	1	1
15	WHEEL DD 5 3/4X1 CCW	1175873	*	*	*	*	*	*	*	*	1	1	*	*	*	*	1	1
16	DISTRIBUTOR 6 CKT	1175220	1	1	1	1	1	1	1	1	1	1	*	*	*	*	*	*
16	DISTRIBUTOR 8 CKT	1174244	*	*	*	*	*	*	*	*	*	*	1	1	1	1	1	1
18	SWITCH LMT 225-50	1171484	1	1	1	1	1	1	1	1	1	1	1	1	1	1	1	1
20	SWITCH PRESS LO O20 C45	1174412	1	1	1	1	1	1	1	1	1	1	1	1	1	1	1	1
21	SENSOR ASY	1175973	1	1	1	1	1	1	1	1	1	1	1	1	1	1	1	1
22	INGNITER ASY	1175974	1	1	1	1	1	1	1	1	1	1	1	1	1	1	1	1
23	MANIFOLD 2 BURNER	1176059	1	1	*	*	*	*	*	*	*	*	*	*	*	*	*	*
23	MANIFOLD 3 BURNER	1176089	*	*	1	1	1	1	1	1	1	1	1	1	1	1	1	1
24	BURNER ASY	1171095	2	2	2	2	2	2	2	2	2	2	2	2	2	2	2	2
25	BURNER ASY	1171087	*	*	1	1	1	1	1	1	1	1	1	1	1	1	1	1
26	RING INSERT	1171439	2	2	3	3	3	3	3	3	3	3	3	3	3	3	3	3
27	VALVE GAS	1175976	1	1	1	1	1	1	1	1	1	1	1	1	1	1	1	1
28	ORIFICE MAIN 38	1172235	2	2	3	3	3	3	*	*	*	*	3	3	*	*	*	*
28	ORIFICE MAIN 33	1172226	*	*	*	*	*	*	3	3	*	*	*	*	3	3	*	*
28	ORIFICE MAIN 31	1171462	*	*	*	*	*	*	*	*	3	3	*	*	*	*	3	3
29	MOTOR ASY IDF 460V	1176051	1	1	1	1	1	1	1	1	*	*	1	1	1	1	*	*

**PGD3 42 - 60 ( 460 ) PARTS LIST (continued)**

KEY NO.	DESCRIPTION	FAST PARTS NO.	PGD342060L00A1	PGD342060L01A1	PGD342090L00A1	PGD342090L01A1	PGD348090L00A1	PGD348090L01A1	PGD348115L00A1	PGD348115L01A1	PGD348130L00A1	PGD348130L01A1	PGD360090L00A1	PGD360090L01A1	PGD360115L00A1	PGD360115L01A1	PGD360130L00A1	PGD360130L01A1
			*	*	*	*	*	*	*	*	*	*	*	*	*	*	*	*
29	MOTOR ASY IDF 460V	1176126	*	*	*	*	*	*	*	*	1	1	*	*	*	*	1	1
30	SENSOR HALL EFFECT	1171450	1	1	1	1	1	1	1	1	1	1	1	1	1	1	1	1
31	MTR IDF 1/460 1/16 3450	1176052	1	1	1	1	1	1	1	1	1	1	1	1	1	1	1	1
32	MOUNTING KIT BLW MTR (42-60)	1176088	1	1	1	1	1	1	1	1	1	1	1	1	1	1	1	1
33	TUBE ASY HT EX 60K BTU	1175982	1	*	*	*	*	*	*	*	*	*	*	*	*	*	*	*
33	TUBE ASY HT EX 60K BTU LWNX	1175981	*	1	*	*	*	*	*	*	*	*	*	*	*	*	*	*
33	TUBE ASY HT EX 90K BTU	1176041	*	*	1	*	1	*	*	*	*	*	1	*	*	*	*	*
33	TUBE ASY HT EX 90K BTU LWNX	1176042	*	*	*	1	*	1	*	*	*	*	1	*	*	*	*	*
33	TUBE ASY HT EX 115/130K BTU	1176118	*	*	*	*	*	*	1	*	1	*	*	*	1	*	1	*
33	TUBE ASY HT EX 115/130K BTU LWNX	1176119	*	*	*	*	*	*	1	*	1	*	*	*	1	*	1	*
35	BAFFLE FLUE 60K	1175986	1	*	*	*	*	*	*	*	*	*	*	*	*	*	*	*
35	BAFFLE FLUE 60K LWNX	1175632	*	1	*	*	*	*	*	*	*	*	*	*	*	*	*	*
35	BAFFLE FLUE 80/90K BTU	1176043	*	*	1	*	1	*	*	*	*	*	1	*	*	*	*	*
35	BAFFLE FLUE 80/90K BTU LWNX	1176044	*	*	*	1	*	1	*	*	*	*	1	*	*	*	*	*
35	BAFFLE FLUE 115K BTU	1176120	*	*	*	*	*	*	1	*	*	*	*	*	1	*	*	*
35	BAFFLE FLUE 115K BTU LWNX	1175629	*	*	*	*	*	*	1	*	*	*	*	*	1	*	*	*
35	BAFFLE FLUE 130K BTU	1176122	*	*	*	*	*	*	*	1	*	*	*	*	*	*	1	*
35	BAFFLE FLUE 130K BTU LWNX	1175602	*	*	*	*	*	*	*	*	1	*	*	*	*	*	*	1
36	BAFFLE LWNX	1175987	*	2	*	3	*	3	*	3	*	3	*	3	*	3	*	3
37	PLUG COMPRESSOR	1176033	1	1	1	1	1	1	1	1	1	1	1	1	1	1	1	1
38	HTR CC WP 40W 460V TCH196-7	1176125	*	*	*	*	1	1	1	1	1	1	1	1	1	1	1	1
39	VALVE TXV 4.0 TON R410A	1176870	1	1	1	1	1	1	1	1	1	1	*	*	*	*	*	*
39	VALVE TXV 6.0 TON R410A	1176871	*	*	*	*	*	*	*	*	*	*	1	1	1	1	1	1
40	SWITCH PRESS HI O650 C420	1174407	1	1	1	1	1	1	1	1	1	1	1	1	1	1	1	1
41	DRIER LIQ 08 CU IN 3/8 SWEAT	1173679	1	1	1	1	1	1	1	1	1	1	1	1	1	1	1	1
50	SWITCH TEMP 160F	1175972	1	1	*	*	*	*	*	*	*	*	*	*	*	*	*	*
50	SWITCH TEMP 165F	1176039	*	*	1	1	*	*	*	*	*	*	*	*	*	*	*	*
50	SWITCH TEMP 155F	1176103	*	*	*	*	1	1	*	*	*	*	1	1	*	*	*	*
50	SWITCH TEMP 135F	1176115	*	*	*	*	*	*	1	1	*	*	*	*	1	1	*	*
50	SWITCH TEMP 140F	1176116	*	*	*	*	*	*	*	1	1	*	*	*	*	1	1	*
A	RACEWAY	1171428	1	1	1	1	1	1	1	1	1	1	1	1	1	1	1	1
B	INSULATION ASY TOP	1176083	1	1	1	1	1	1	1	1	1	1	1	1	1	1	1	1
C	BASE PAN ASY	1176061	1	1	1	1	1	1	1	1	1	1	1	1	1	1	1	1
D	COVER ASY DUCT	1176062	2	2	2	2	2	2	2	2	2	2	2	2	2	2	2	2
E	TOP COND	1176063	1	1	1	1	1	1	1	1	1	1	1	1	1	1	1	1
F	PARTITION COIL RETURN	1176064	1	1	1	1	1	1	1	1	1	1	1	1	1	1	1	1
G	PARTITION FAN	1176065	1	1	1	1	1	1	1	1	1	1	1	1	1	1	1	1
H	PANEL REAR DUCT	1176066	1	1	1	1	1	1	1	1	1	1	1	1	1	1	1	1
J	PANEL SIDE COMP	1176067	1	1	1	1	1	1	1	1	1	1	1	1	1	1	1	1
K	PANEL ACCESS	1176068	1	1	1	1	1	1	1	1	1	1	1	1	1	1	1	1
L	INSULATION PANEL ACCESS	1176069	1	1	1	1	1	1	1	1	1	1	1	1	1	1	1	1
M	INSULATION PANEL COMP SIDE	1176070	1	1	1	1	1	1	1	1	1	1	1	1	1	1	1	1
N	GRILLE OUTLET	1171267	1	1	1	1	1	1	1	1	1	1	1	1	1	1	1	1
P	GROMMET COMPRESSOR 1.62"DIA	1171270	4	4	4	4	4	4	4	4	4	4	4	4	4	4	4	4
Q	CAP HOOD	1175999	1	1	1	1	1	1	1	1	1	1	1	1	1	1	1	1
R	PLATE INSULATION	1176000	1	1	1	1	1	1	1	1	1	1	1	1	1	1	1	1

**PGD3 42 - 60 ( 460 ) PARTS LIST (continued)**

KEY NO.	DESCRIPTION	FAST PARTS NO.	PGD342060L00A1	PGD342060L01A1	PGD342090L00A1	PGD342090L01A1	PGD348090L00A1	PGD348090L01A1	PGD348115L00A1	PGD348115L01A1	PGD348130L00A1	PGD348130L01A1	PGD360090L00A1	PGD360090L01A1	PGD360115L00A1	PGD360115L01A1	PGD360130L00A1	PGD360130L01A1
S	INSULATION ASY FLUE BOX	1176001	1	1	1	1	1	1	*	*	*	*	*	*	*	*	*	*
S	INSULATION ASY FLUE BOX	1176124	*	*	*	*	*	*	1	1	1	1	1	1	1	1	1	1
T	INSULATION FLUE COVER	1176002	1	1	1	1	1	1	1	1	1	1	1	1	1	1	1	1
V	SHEILD	1176003	1	1	1	1	1	1	1	1	1	1	1	1	1	1	1	1
W	INSULATION FLUE COVER	1176004	1	1	1	1	1	1	1	1	1	1	1	1	1	1	1	1
X	PANEL SIDE GAS	1176071	1	1	1	1	1	1	1	1	1	1	1	1	1	1	1	1
Y	INSULATION PANEL GAS SIDE	1176072	1	1	1	1	1	1	1	1	1	1	1	1	1	1	1	1
Z	CONTROL BOX	1176007	1	1	1	1	1	1	1	1	1	1	1	1	1	1	1	1
AA	INSULATION FAN PARTITION	1176073	1	1	1	1	1	1	1	1	1	1	1	1	1	1	1	1
AE	SCROLL	1176074	1	1	1	1	1	1	1	1	1	1	1	1	1	1	1	1
AF	PLATE ASY FAN SIDE	1176075	1	1	1	1	1	1	1	1	1	1	1	1	1	1	1	1
AH	PLATE FAN BOTTOM	1176077	1	1	1	1	1	1	1	1	1	1	1	1	1	1	1	1
AJ	CLAMP CAPACITOR OVAL	1171552	2	2	2	2	2	2	2	2	2	2	1	1	1	1	1	1
AJ	CLAMP CAPACITOR OVAL	1176134	*	*	*	*	*	*	*	*	*	*	1	1	1	1	1	1
AK	GRILLE ASY 16"	1176173	1	1	1	1	1	1	1	1	1	1	*	*	*	*	*	*
AK	GRILLE ASY 20"	1176106	*	*	*	*	*	*	*	*	*	*	1	1	1	1	1	1
AL	GRILLE ASY 16"	1176017	2	2	2	2	2	2	2	2	2	2	*	*	*	*	*	*
AL	GRILLE ASY 20"	1176107	*	*	*	*	*	*	*	*	*	*	2	2	2	2	2	2
AM	GRILLE ASY 16"	1176174	1	1	1	1	1	1	1	1	1	1	*	*	*	*	*	*
AM	GRILLE ASY 20"	1176108	*	*	*	*	*	*	*	*	*	*	1	1	1	1	1	1
AP	PANEL CORNER 16" COND	1176045	2	2	2	2	2	2	2	2	2	2	*	*	*	*	*	*
AP	PANEL CORNER 20" COND	1176109	*	*	*	*	*	*	*	*	*	*	2	2	2	2	2	2
AQ	BRACKET SUPPORT 10"	1176023	4	4	4	4	4	4	4	4	4	4	*	*	*	*	*	*
AQ	BRACKET SUPPORT 16"	1176110	*	*	*	*	*	*	*	*	*	*	4	4	4	4	4	4
AR	PANEL CORNER 16" HEADER	1176046	1	1	1	1	1	1	1	1	1	1	*	*	*	*	*	*
AR	PANEL CORNER 20" HEADER	1176111	*	*	*	*	*	*	*	*	*	*	1	1	1	1	1	1
AS	PARTITION COIL EVAP	1176081	1	1	1	1	*	*	*	*	*	*	*	*	*	*	*	*
AS	PARTITION COIL EVAP	1176112	*	*	*	*	1	1	1	1	1	1	1	1	1	1	1	1
AT	SUPPORT BURNER	1176027	1	1	1	1	1	1	1	1	1	1	1	1	1	1	1	1
AV	BRACKET BURNER	1176028	1	1	*	*	*	*	*	*	*	*	*	*	*	*	*	*
AV	BRACKET BURNER	1176047	*	*	1	1	1	1	1	1	1	1	1	1	1	1	1	1
AX	HOUSING FAN IDM	1176030	1	1	1	1	1	1	1	1	1	1	1	1	1	1	1	1
AW	BRACKET SWITCH	1176031	1	1	1	1	1	1	1	1	1	1	1	1	1	1	1	1
AZ	BARRIER 24V	1176032	1	1	1	1	1	1	1	1	1	1	1	1	1	1	1	1
BA	PANEL CORNER 16"	1176734	1	1	1	1	1	1	1	1	1	1	*	*	*	*	*	*
BA	PANEL CORNER 20" HAIRPIN	1176113	*	*	*	*	*	*	*	*	*	*	1	1	1	1	1	1
BB	SUPPORT BLOWER	1176085	1	1	1	1	1	1	1	1	1	1	1	1	1	1	1	1
BC	PARTITION COIL SUPPLY	1176084	1	1	1	1	1	1	1	1	1	1	1	1	1	1	1	1
BD	SUPPORT BLOWER	1176784	1	1	1	1	1	1	1	1	1	1	1	1	1	1	1	1
BE	SHEILD BASE PAN	1176086	1	1	1	1	1	1	1	1	1	1	1	1	1	1	1	1
BF	INSULATION RETURN DUCT PANEL	1176087	1	1	1	1	1	1	1	1	1	1	1	1	1	1	1	1
BG	COMPRESSOR MTG BOLT	1176731	4	4	4	4	4	4	4	4	4	4	4	4	4	4	4	4
BH	INSULATION COIL PARTITION	1176153	1	1	1	1	1	1	1	1	1	1	1	1	1	1	1	1
BJ	INSULATION COIL PARTITION	1176786	1	1	1	1	1	1	1	1	1	1	1	1	1	1	1	1
BK	GROMMET	1176613	1	1	1	1	1	1	1	1	1	1	1	1	1	1	1	1
BL	PARTITION COIL EVAP	1176114	*	*	*	*	1	1	1	1	1	1	1	1	1	1	1	1

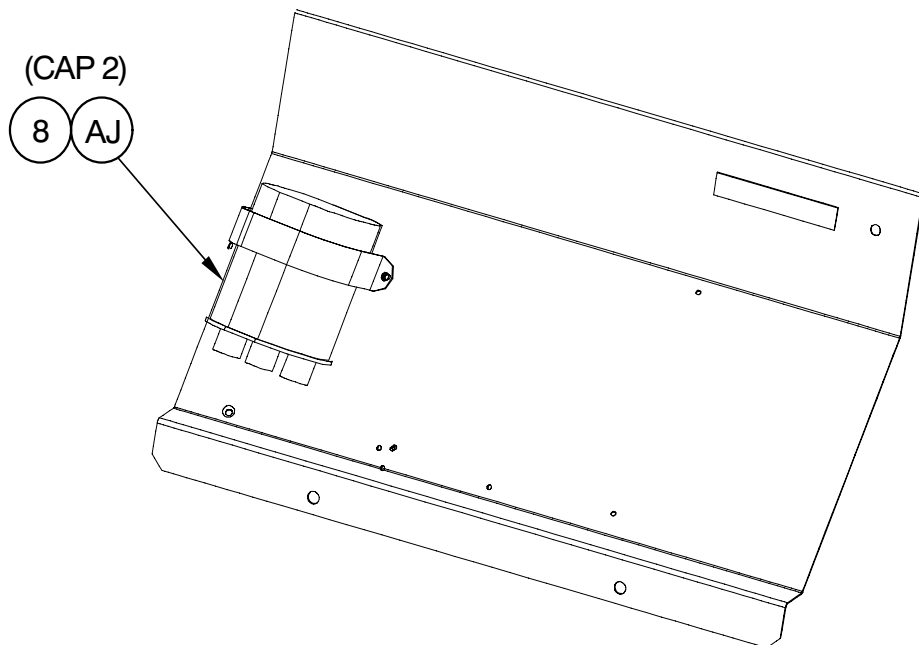
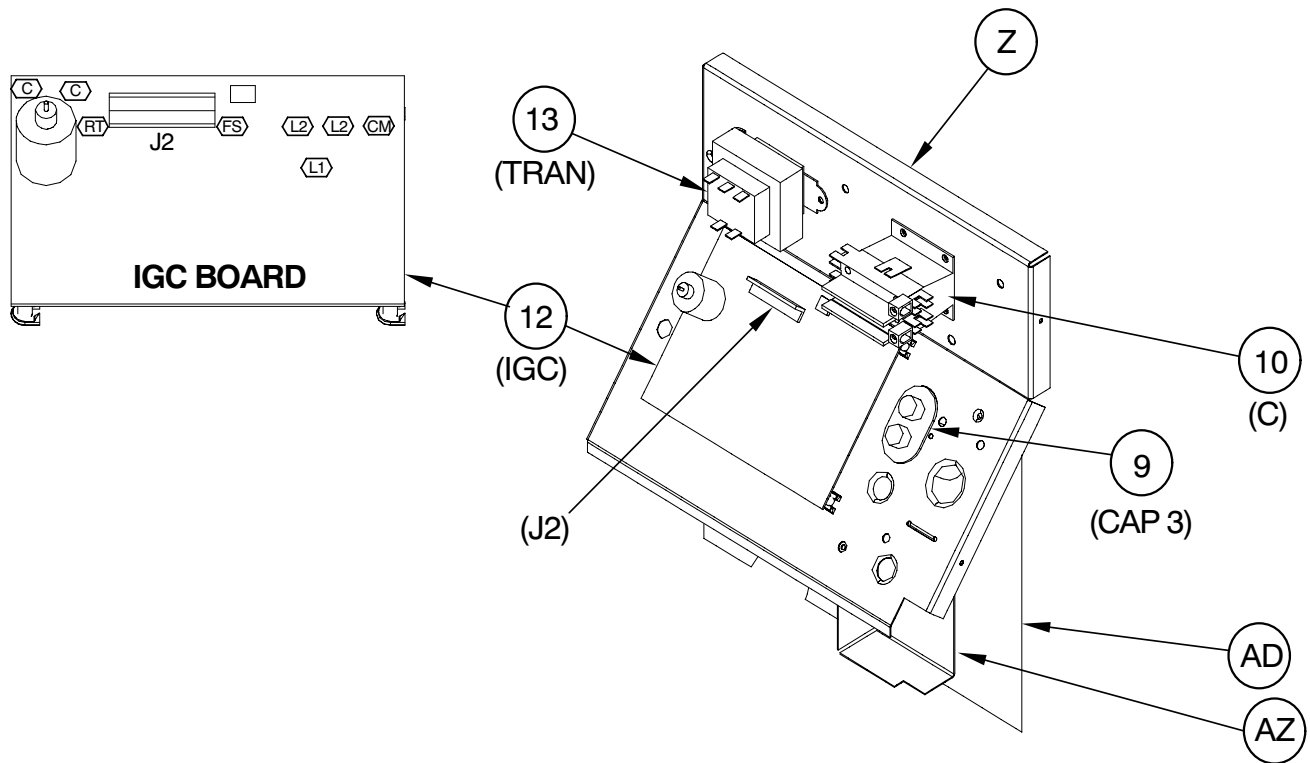
**PGD3 42 - 60 ( 460 ) PARTS LIST (continued)**

KEY NO.	DESCRIPTION	FAST PARTS NO.	PGD342060L00A1	PGD342060L01A1	PGD342090L00A1	PGD342090L01A1	PGD348090L00A1	PGD348090L01A1	PGD348115L00A1	PGD348115L01A1	PGD348130L00A1	PGD348130L01A1	PGD360090L00A1	PGD360090L01A1	PGD360115L00A1	PGD360115L01A1	PGD360130L00A1	PGD360130L01A1
			PARTS NOT SHOWN															
)	HARNESS ASY 460V	1176048	1	1	1	1	1	1	1	1	1	1	1	1	1	1	1	1
)	WIRE ASY INGNITION	1175969	1	1	1	1	1	1	1	1	1	1	1	1	1	1	1	1
)	WIRE IGNITION	1175498	1	1	1	1	1	1	1	1	1	1	1	1	1	1	1	1
)	STD ALTD LP CONV ( 0-2000 FT )	1177450	1	1	1	1	1	1	1	1	1	1	1	1	1	1	1	1
)	HIGH ALTD LP CONV ( ABOVE 2000 FT )	1177451	1	1	1	1	1	1	1	1	1	1	1	1	1	1	1	1
)	LP TO NG CONV	1177452	1	1	1	1	1	1	1	1	1	1	1	1	1	1	1	1

PGD3 30 & 36

NOTE: This illustration is for reference only. Your unit may differ in appearance or may not include all components shown.

**CONTROL BOX ASY**



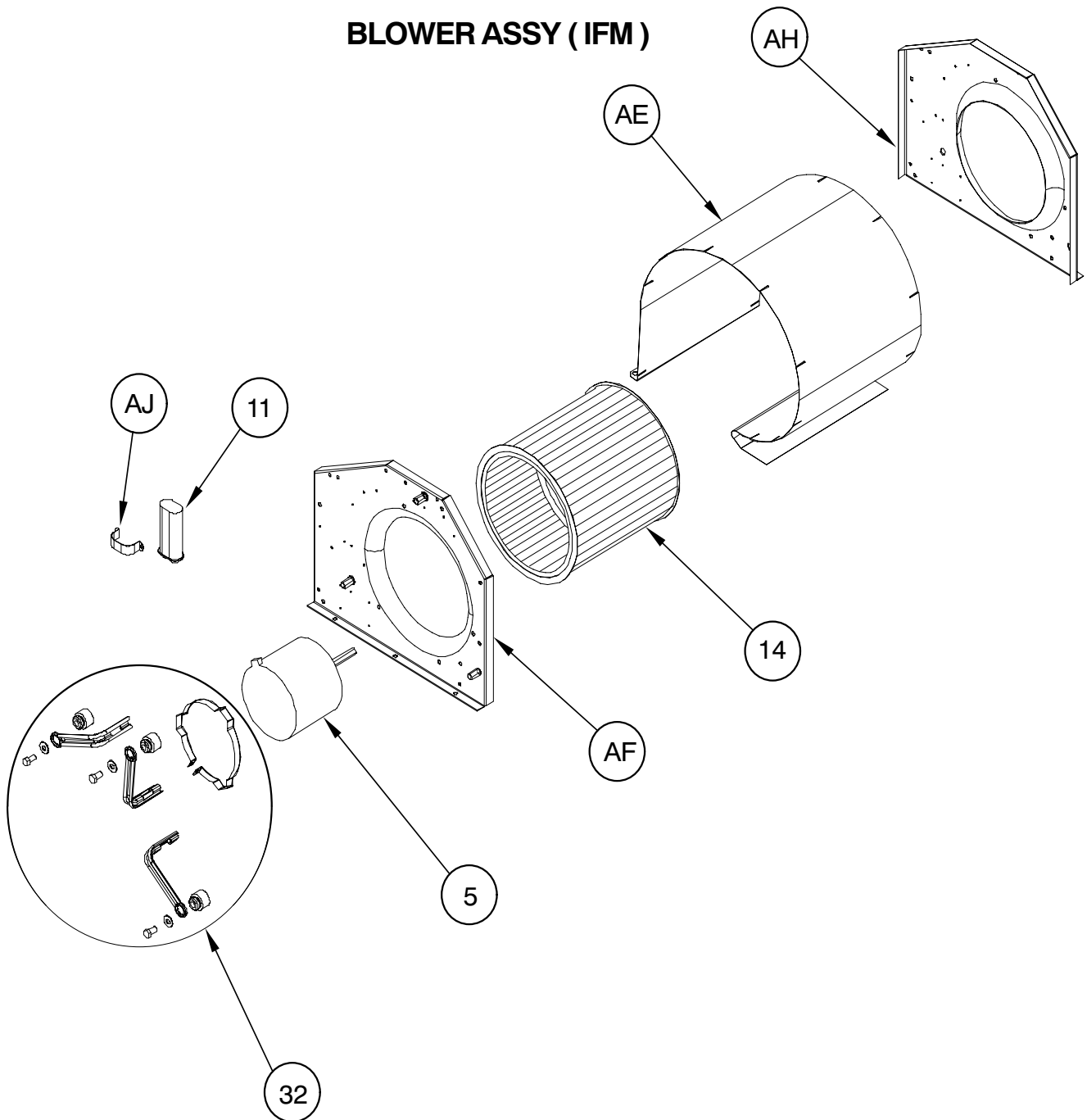
**CONTROL PANEL ASY**



PGD3 30 & 36

NOTE: This illustration is for reference only. Your unit may differ in appearance or may not include all components shown.

**BLOWER ASSY ( IFM )**

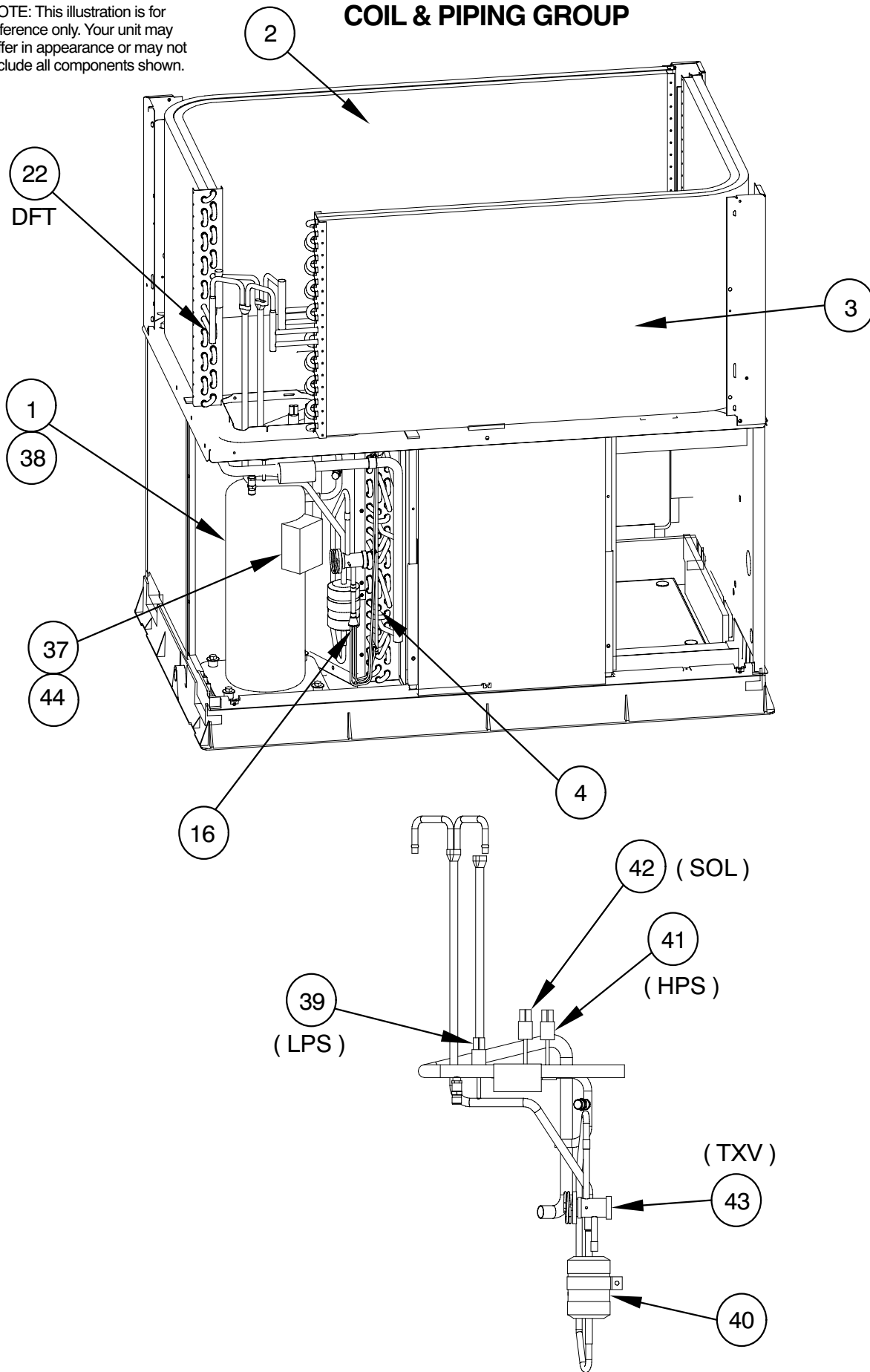


WPA3001

PGD3 30 & 36

NOTE: This illustration is for reference only. Your unit may differ in appearance or may not include all components shown.

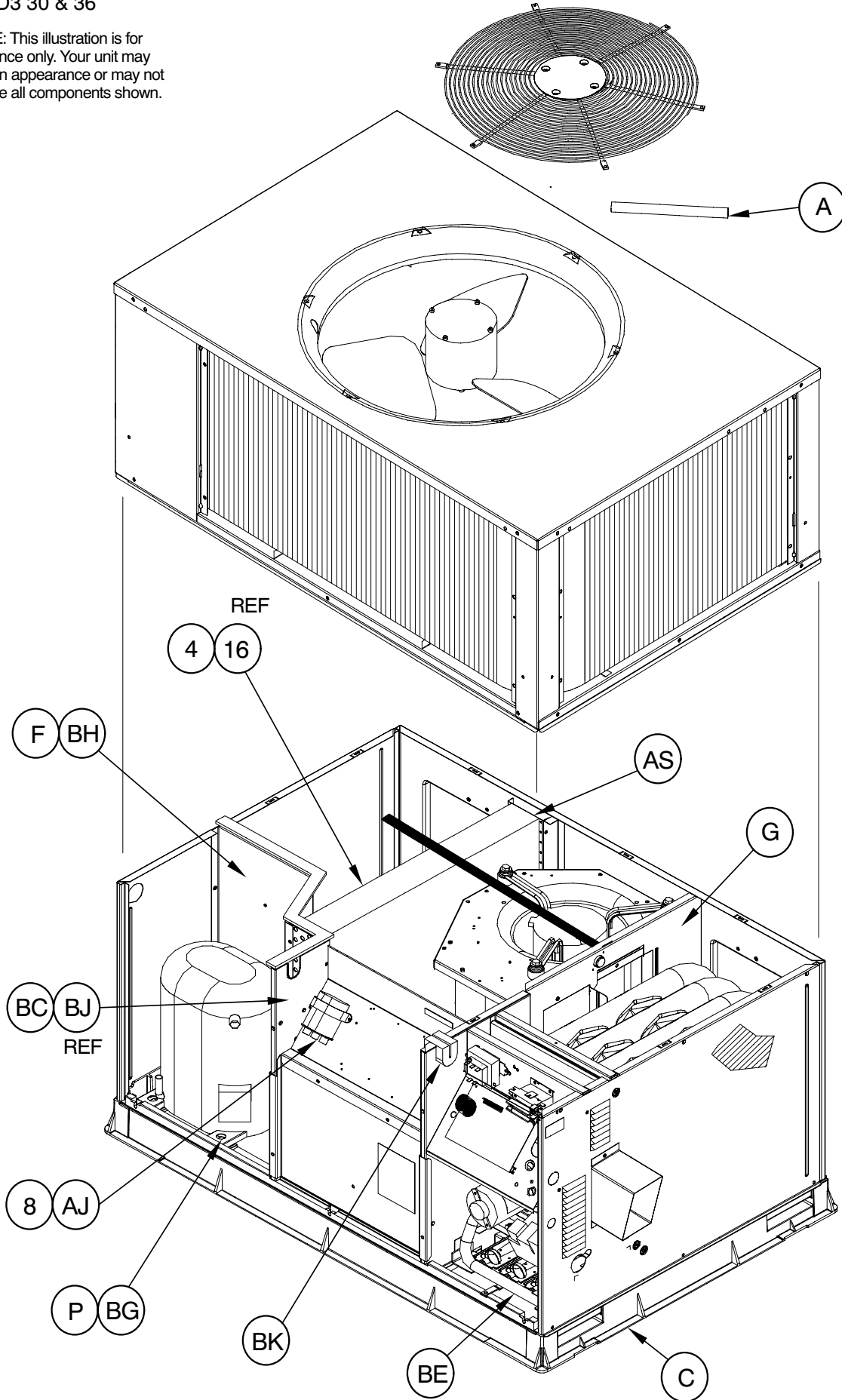
### COIL & PIPING GROUP



PAD300

PGD3 30 & 36

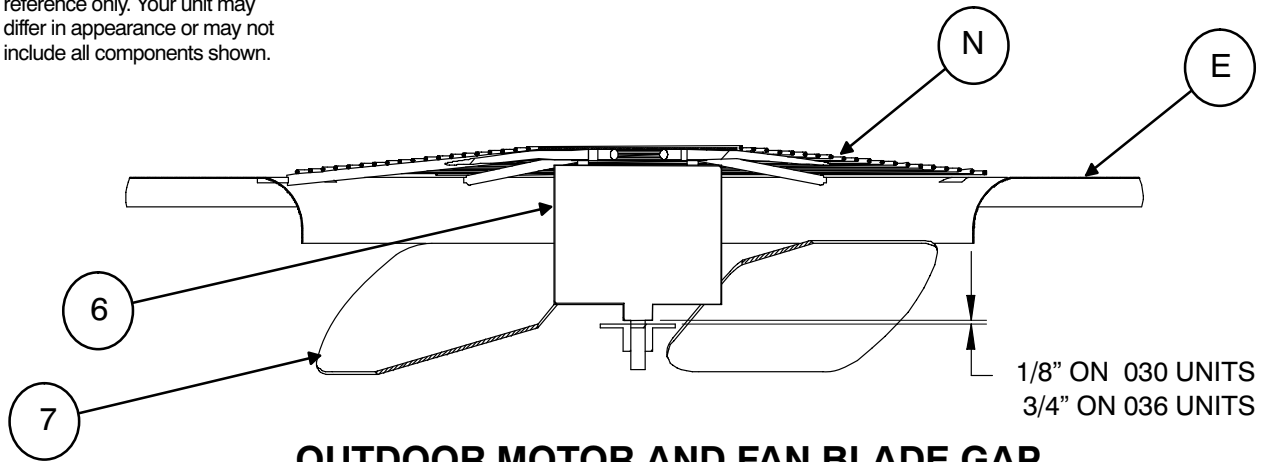
NOTE: This illustration is for reference only. Your unit may differ in appearance or may not include all components shown.



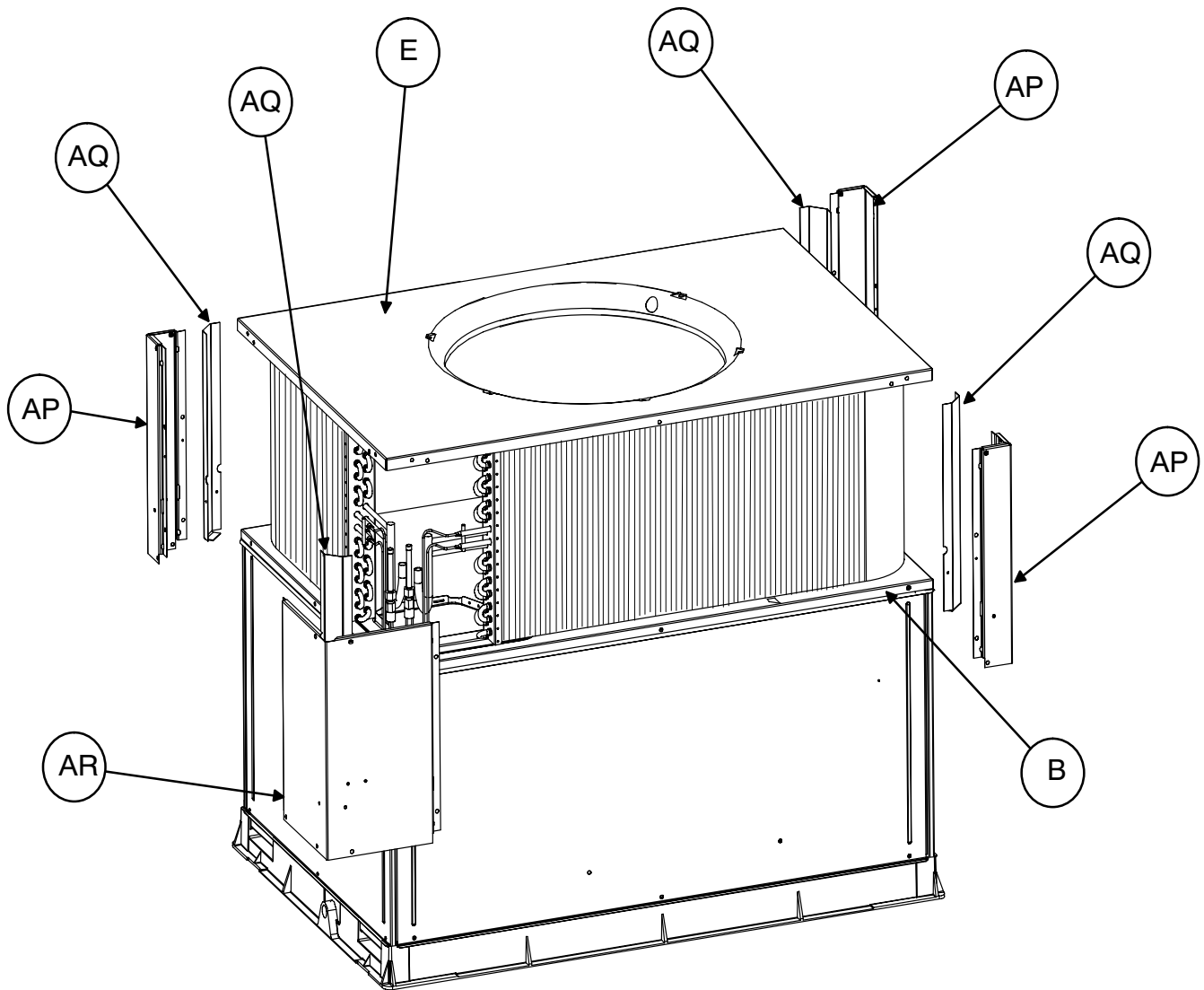
PGD3002

PGD3 30 & 36

NOTE: This illustration is for reference only. Your unit may differ in appearance or may not include all components shown.



**OUTDOOR MOTOR AND FAN BLADE GAP**

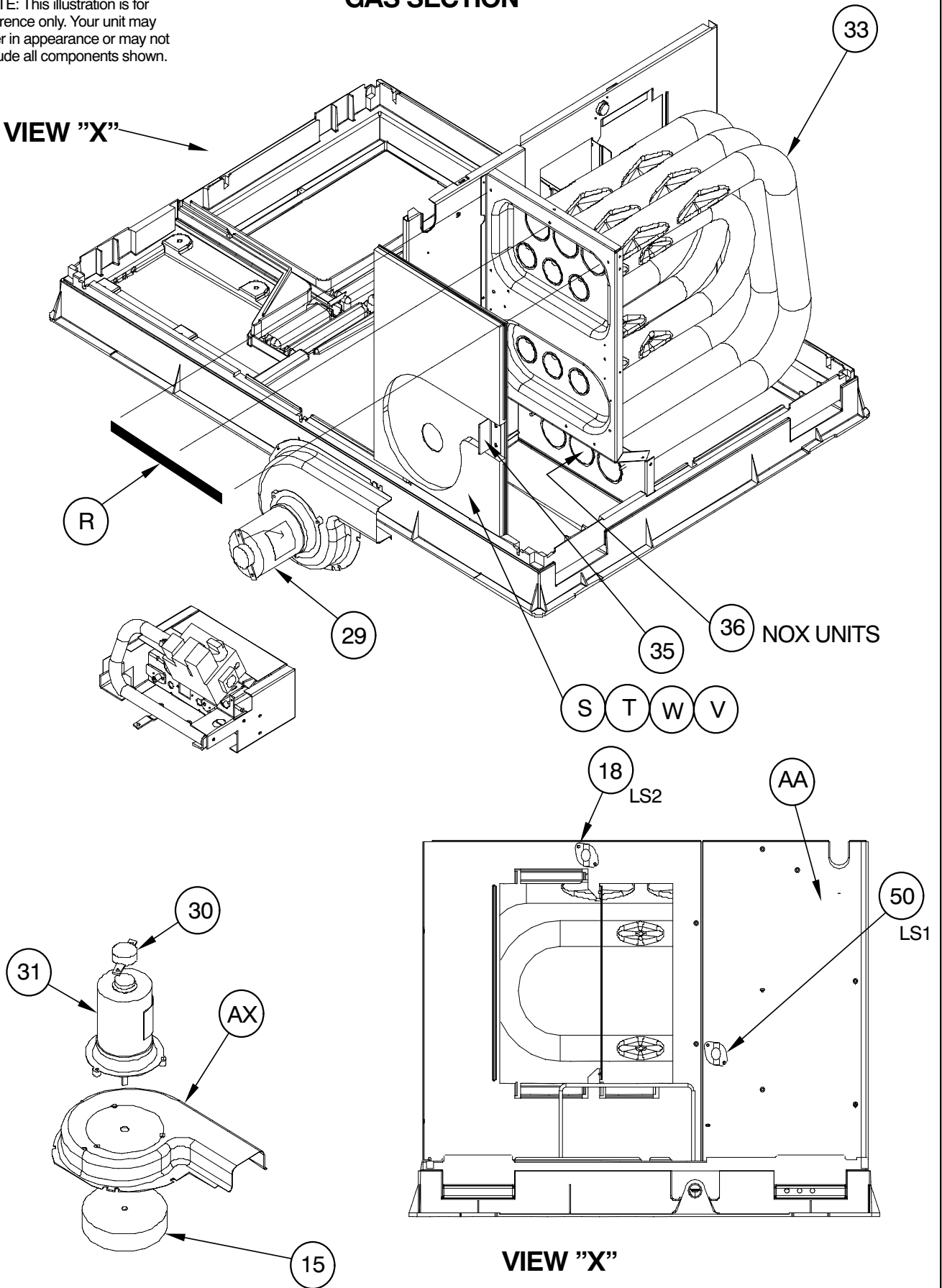


PHD08

NOTE: This illustration is for reference only. Your unit may differ in appearance or may not include all components shown.

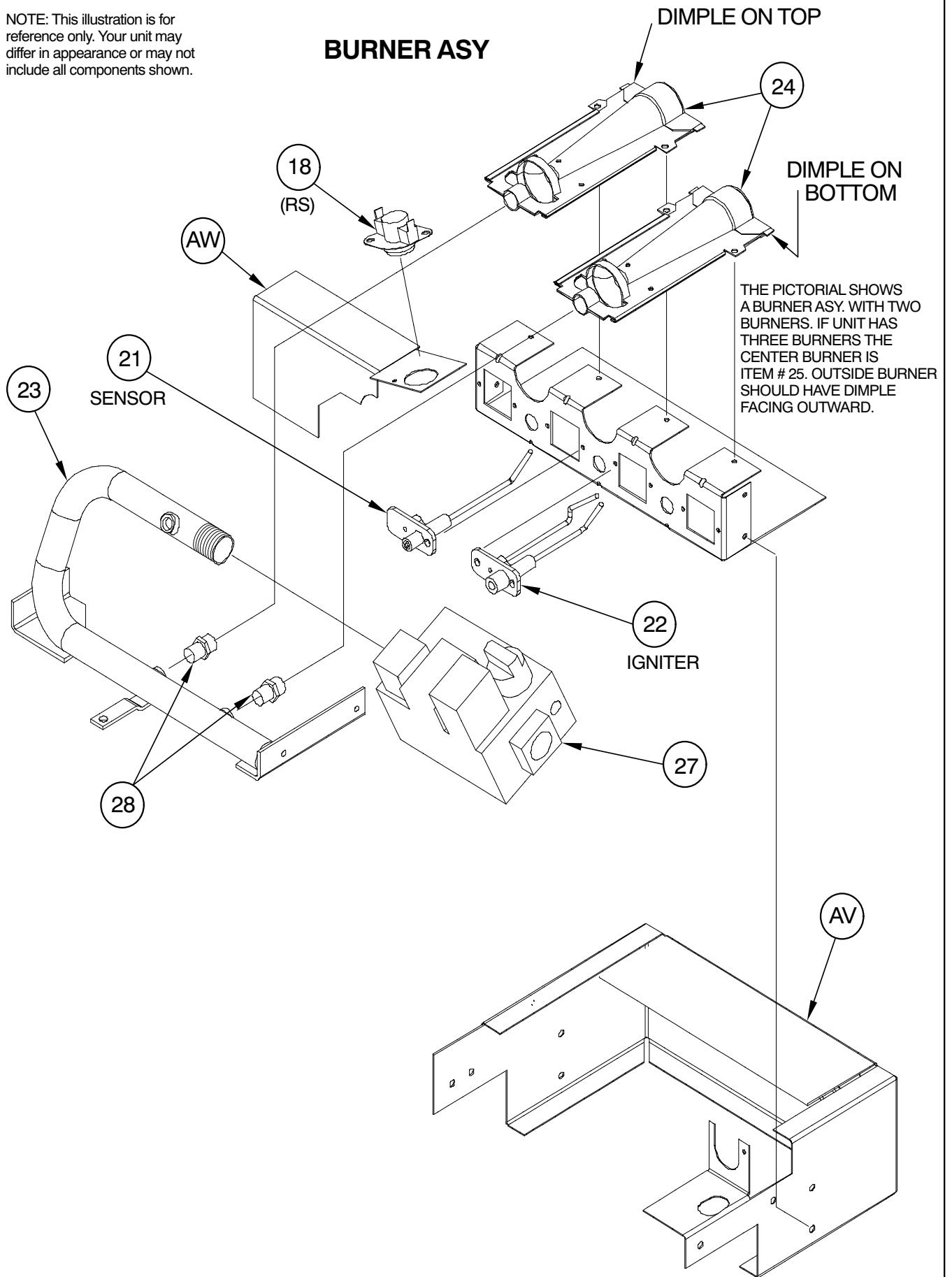
### GAS SECTION

VIEW "X"



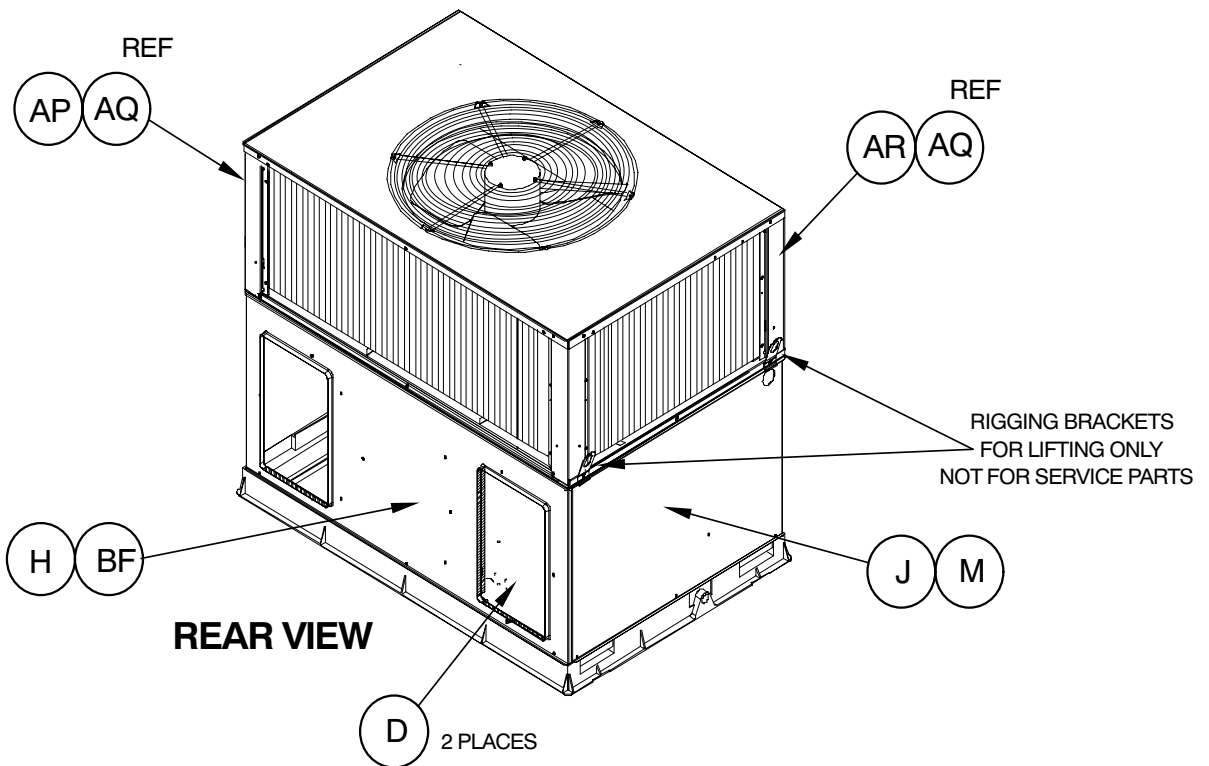
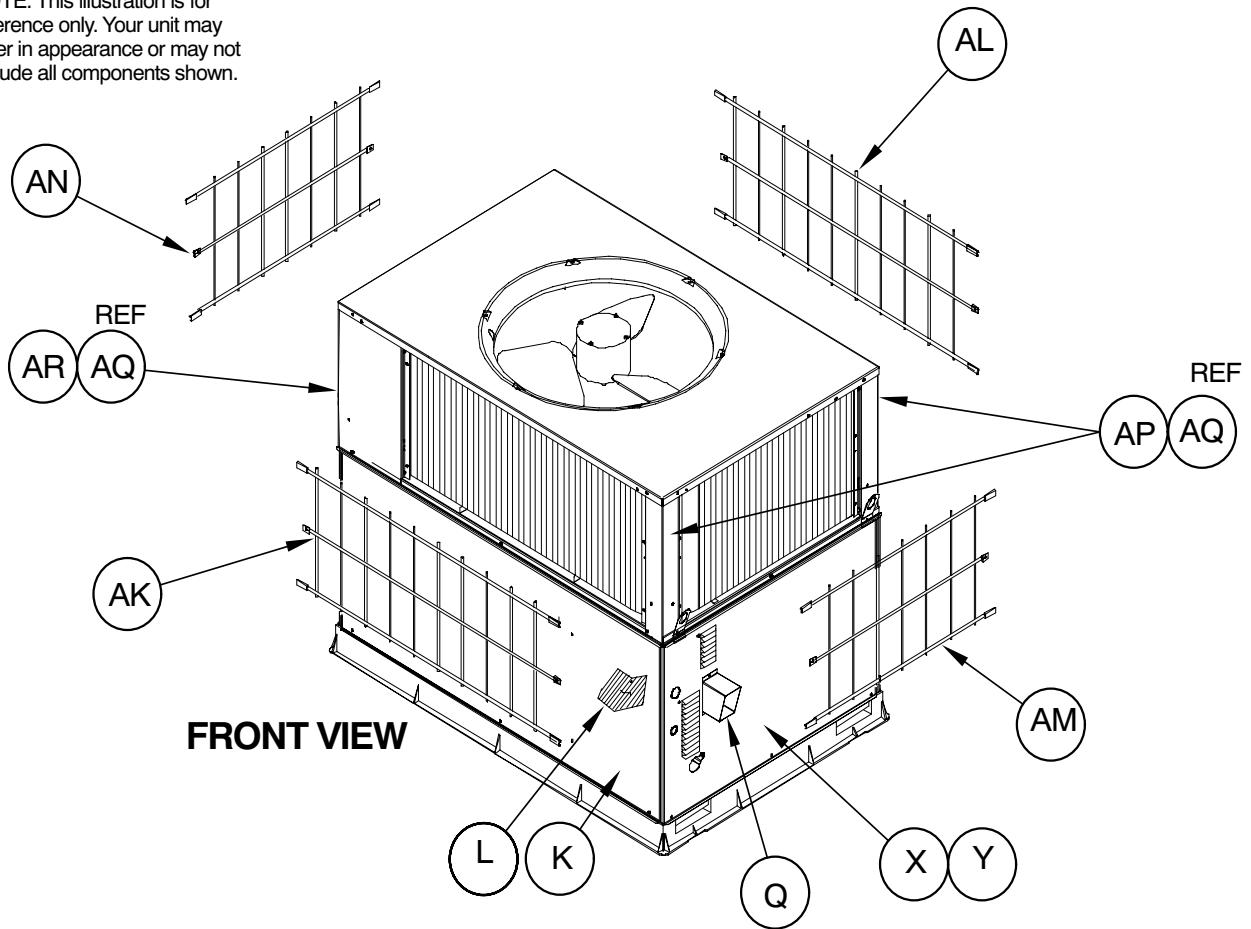
NOTE: This illustration is for reference only. Your unit may differ in appearance or may not include all components shown.

### BURNER ASY



PGD3 30 & 36

NOTE: This illustration is for reference only. Your unit may differ in appearance or may not include all components shown.

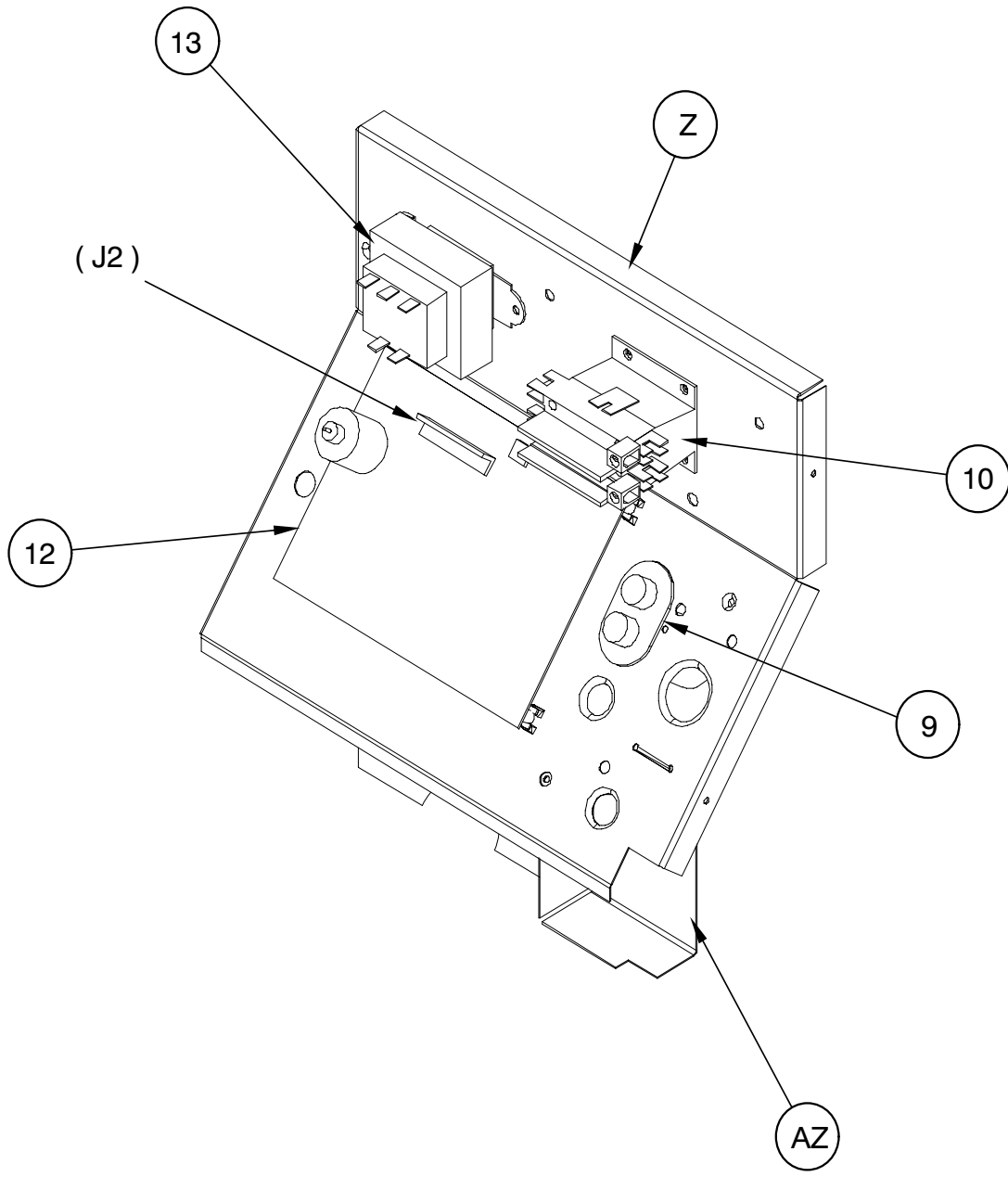


PGD3005

PGD3 42 - 60

NOTE: This illustration is for reference only. Your unit may differ in appearance or may not include all components shown.

**CONTROL BOX ASSY**

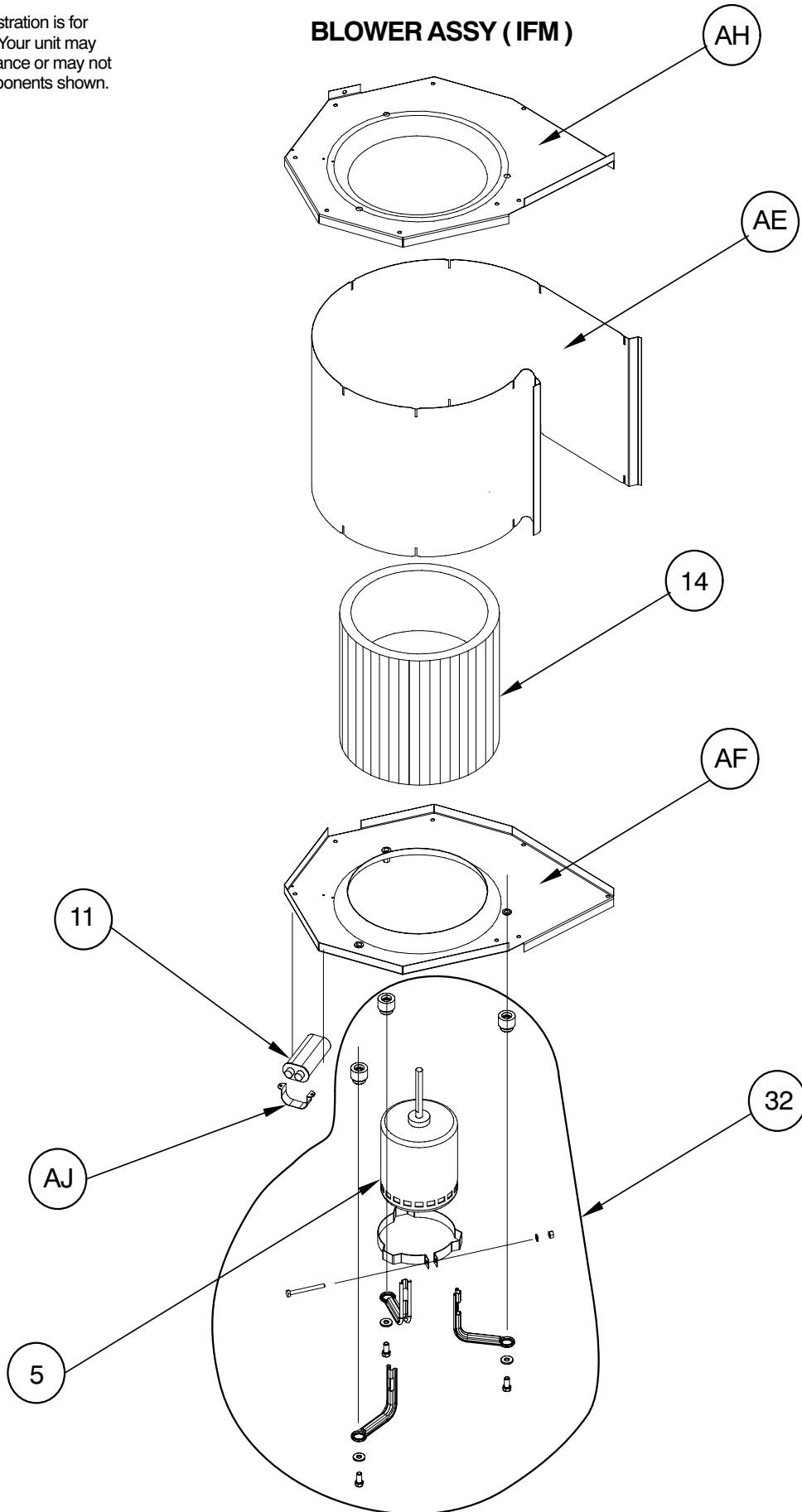




PGD3 42 - 60

NOTE: This illustration is for reference only. Your unit may differ in appearance or may not include all components shown.

**BLOWER ASSY (IFM)**

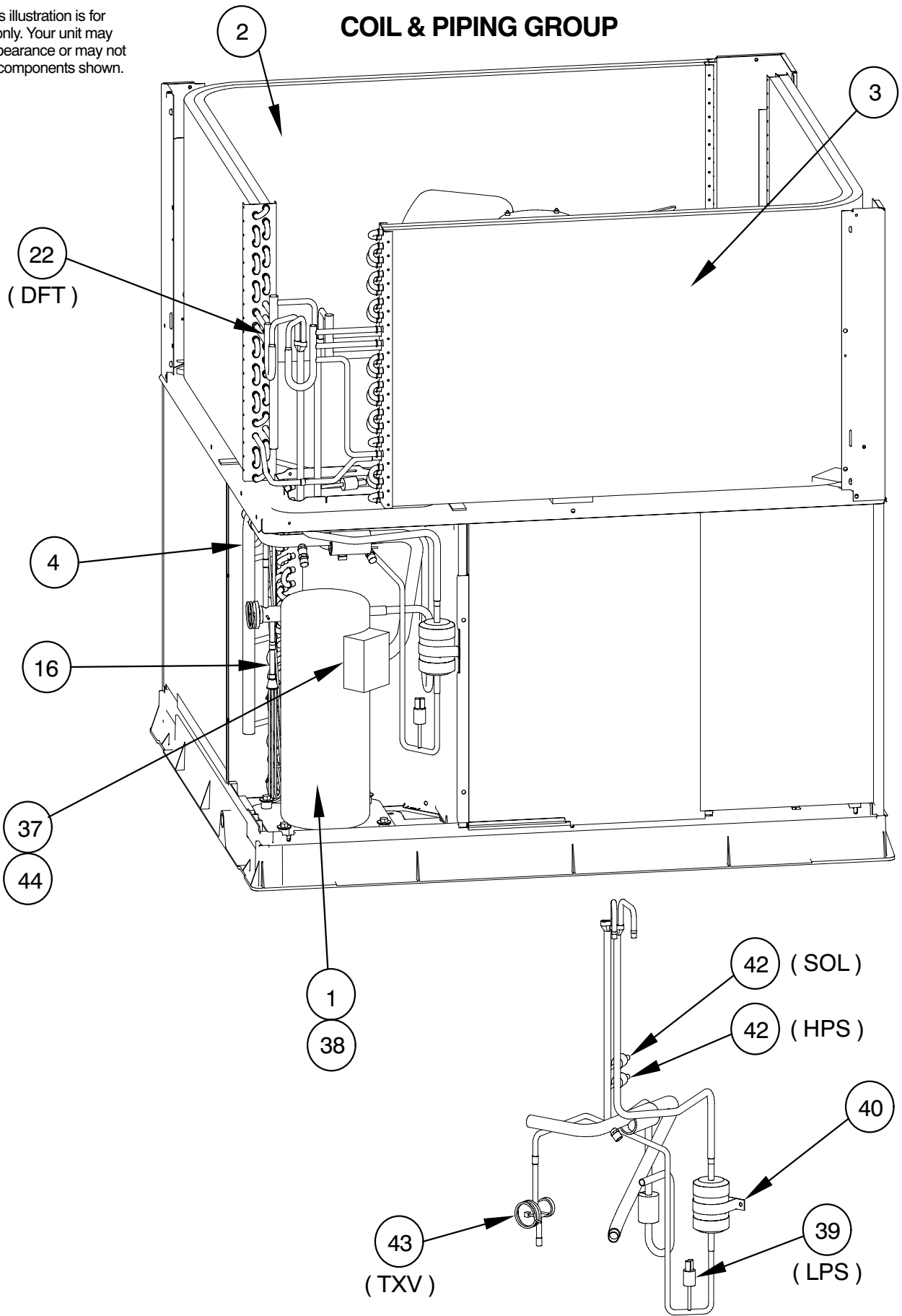


WPGN06

PGD3 42 - 60

NOTE: This illustration is for reference only. Your unit may differ in appearance or may not include all components shown.

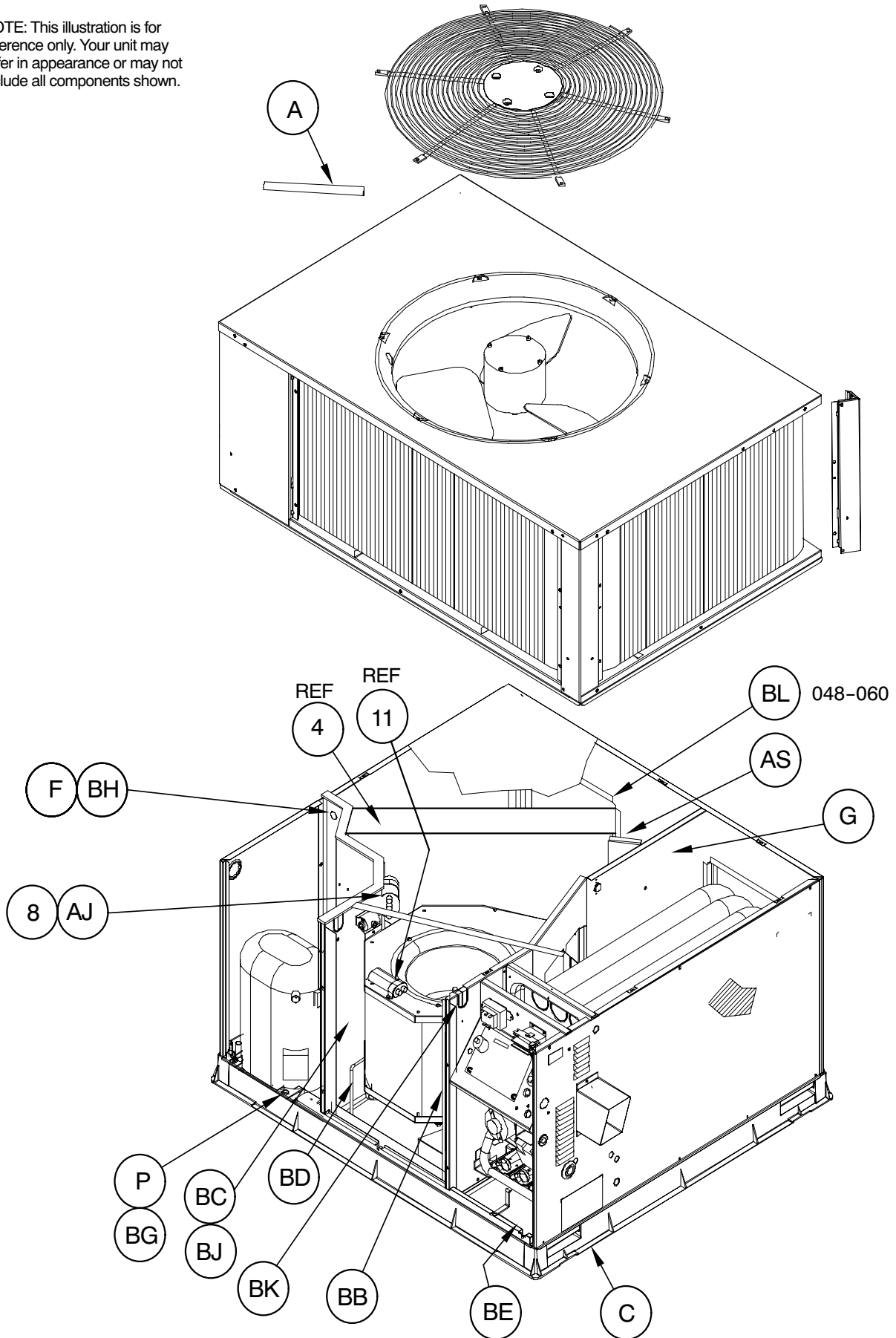
### COIL & PIPING GROUP



PAD301

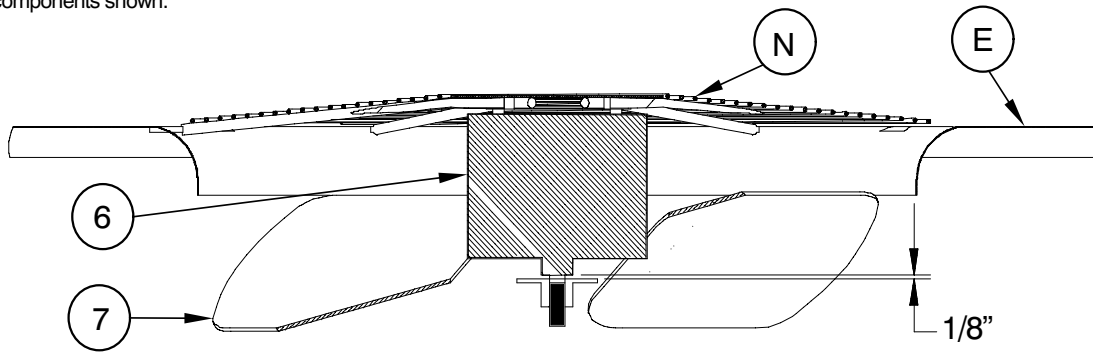
PGD3 42 - 60

NOTE: This illustration is for reference only. Your unit may differ in appearance or may not include all components shown.

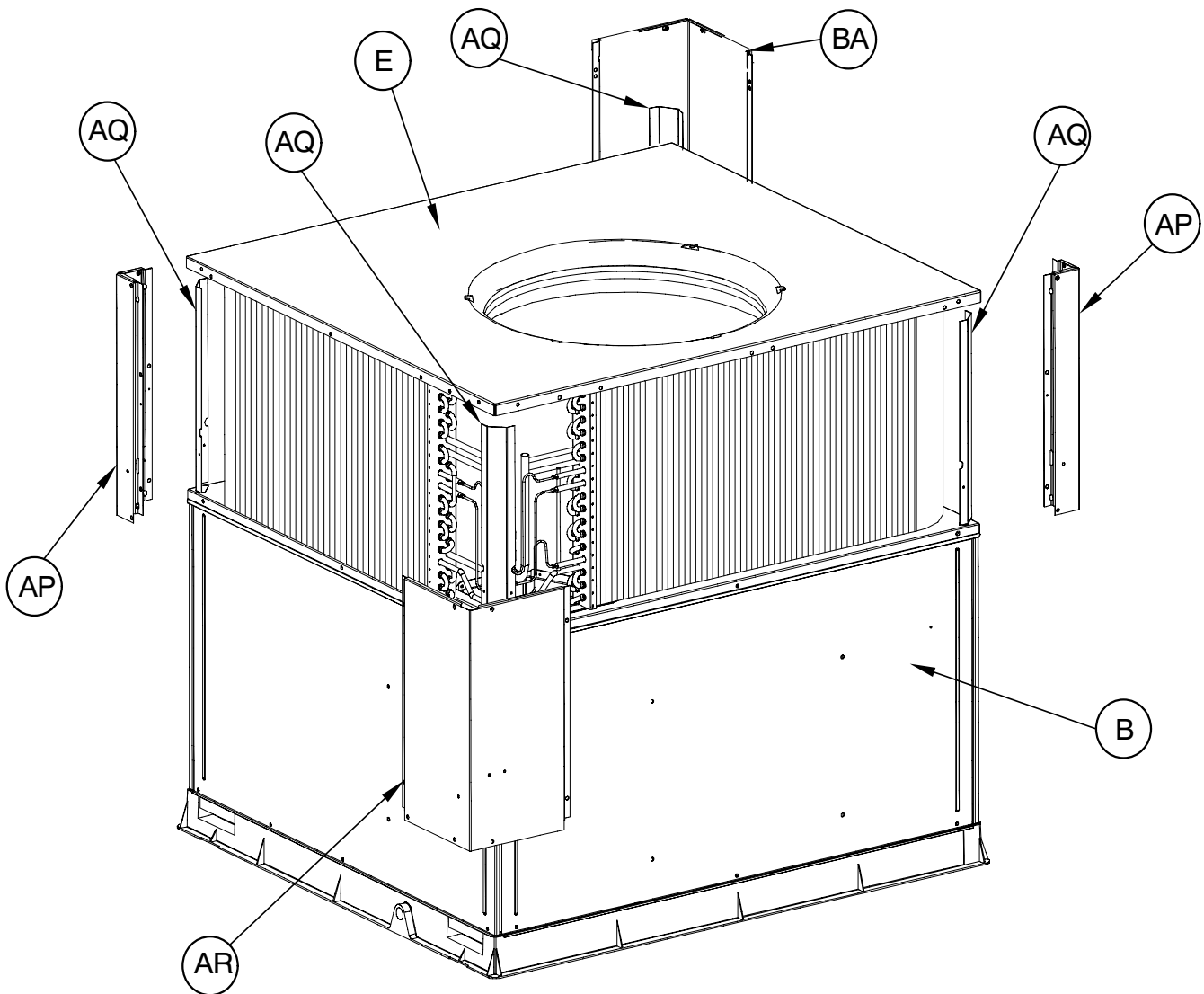


PGD3007

NOTE: This illustration is for reference only. Your unit may differ in appearance or may not include all components shown.

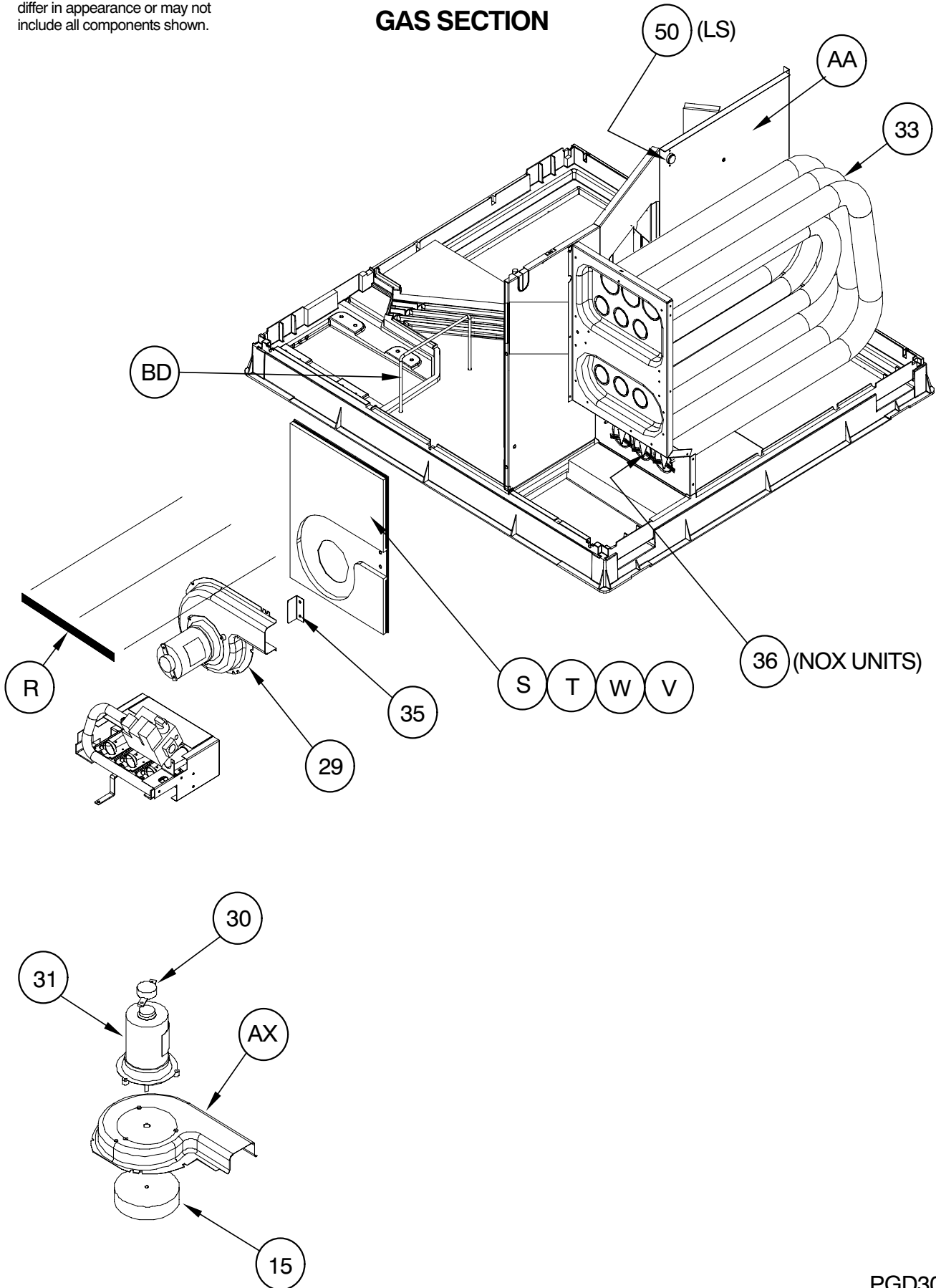


### OUTDOOR MOTOR AND FAN BLADE GAP

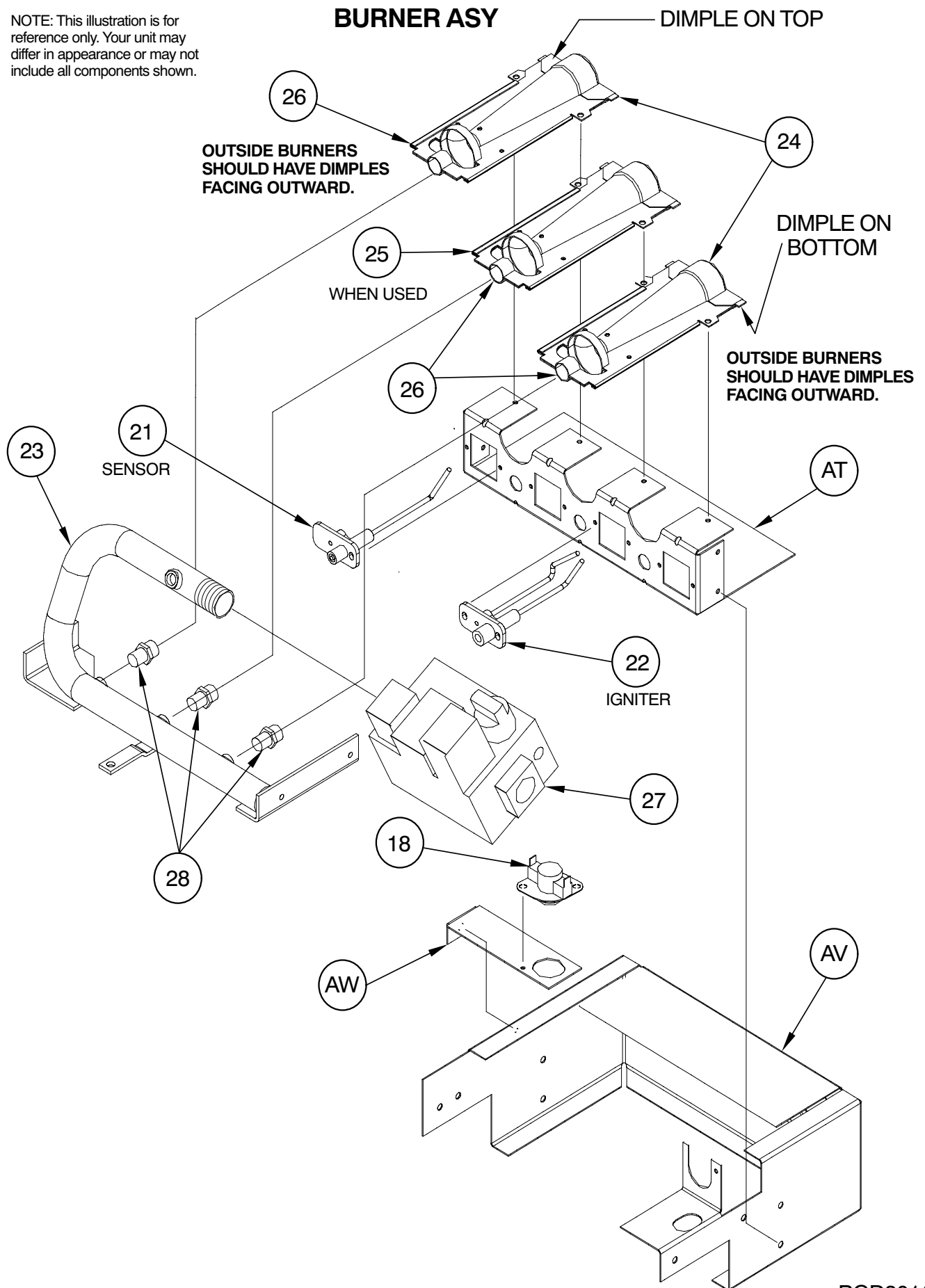


NOTE: This illustration is for reference only. Your unit may differ in appearance or may not include all components shown.

### GAS SECTION



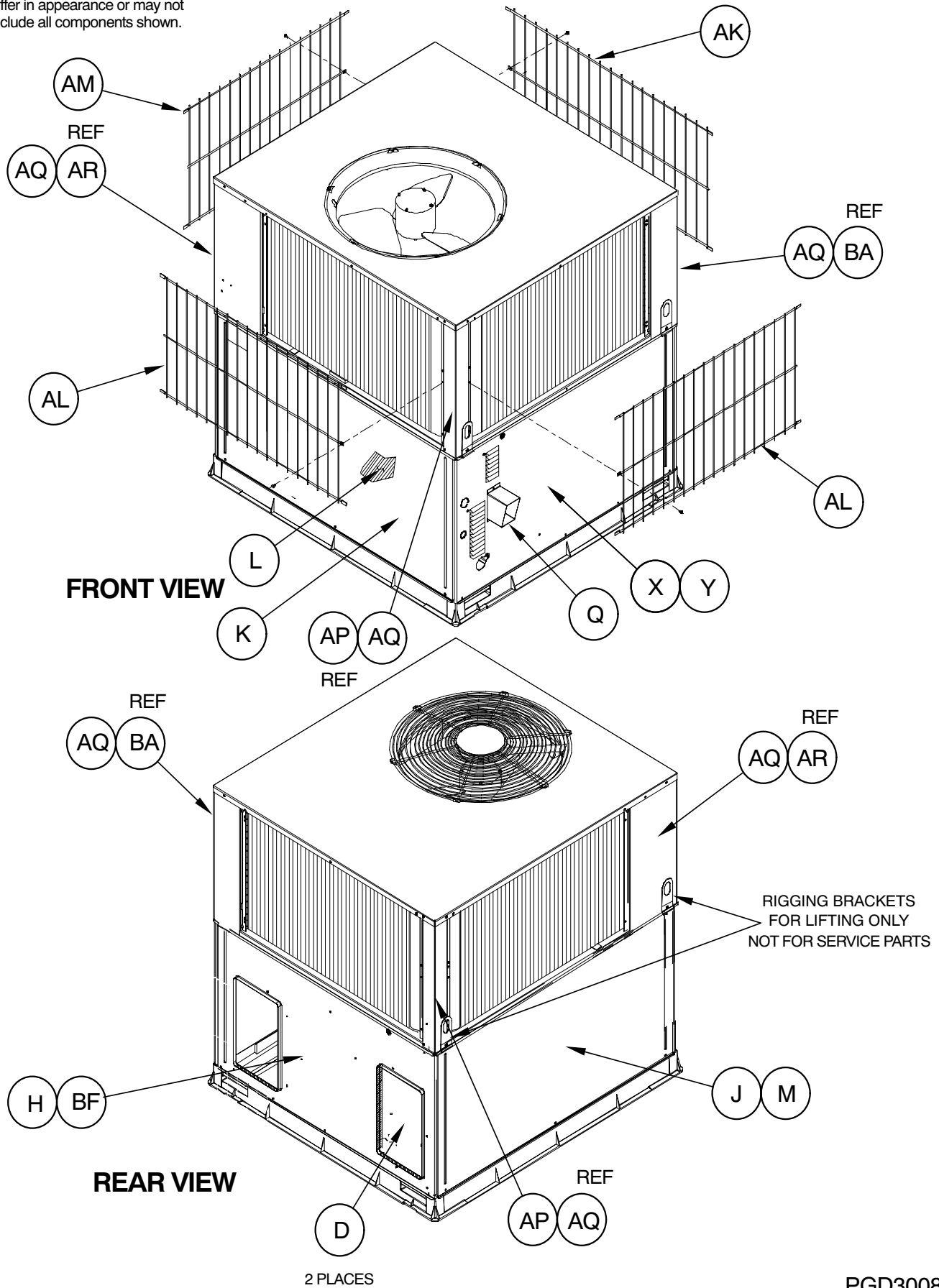
NOTE: This illustration is for reference only. Your unit may differ in appearance or may not include all components shown.



PGD3011

PGD3 42 - 60

NOTE: This illustration is for reference only. Your unit may differ in appearance or may not include all components shown.



PGD3008

**Charging Procedure**

- 1- Measure Discharge line pressure by attaching a gauge to the service port.
- 2- Measure the Liquid line temperature by attaching a temperature sensing device to it.
- 3- Insulate the temperature sensing device so that the Outdoor Ambient doesn't affect the reading.
- 4- Refer to the required Subcooling in the table based on the model size and the Outdoor Ambient temperature.
- 5- Interpolate if the Outdoor ambient temperature lies in between the table values.

- 6- Find the Pressure Value in the table corresponding to the the measured Pressure of the Compressor Discharge line.
- 7- Read across from the Pressure reading to obtain the Liquid line temperature for a required Subcooling
- 8- Add Charge if the measured temperature is higher than the table value.
- 9 - Remove charge if the measured temperature is lower than the table value.

Required Subcooling of F (oC)

Model Size	Outdoor Ambient Temperature				
	75 (24)	85 (29)	95 (35)	105 (41)	115 (46)
030	12 (6.7)	13 (7.2)	14 (7.8)	15 (5.0)	15 (5.0)
036	14 (7.8)	14 (7.8)	14 (7.8)	14 (7.8)	14 (7.8)
042	11 (6.1)	11 (6.1)	11 (6.1)	10 (5.6)	9 (5.0)
048	8 (4.4)	7 (3.9)	7 (3.9)	7 (3.9)	6 (3.3)
060	14 (7.8)	13 (7.2)	12 (6.7)	11 (6.1)	10 (5.6)

Required Liquid Line Temperature for a Specific Subcooling (R-410A)

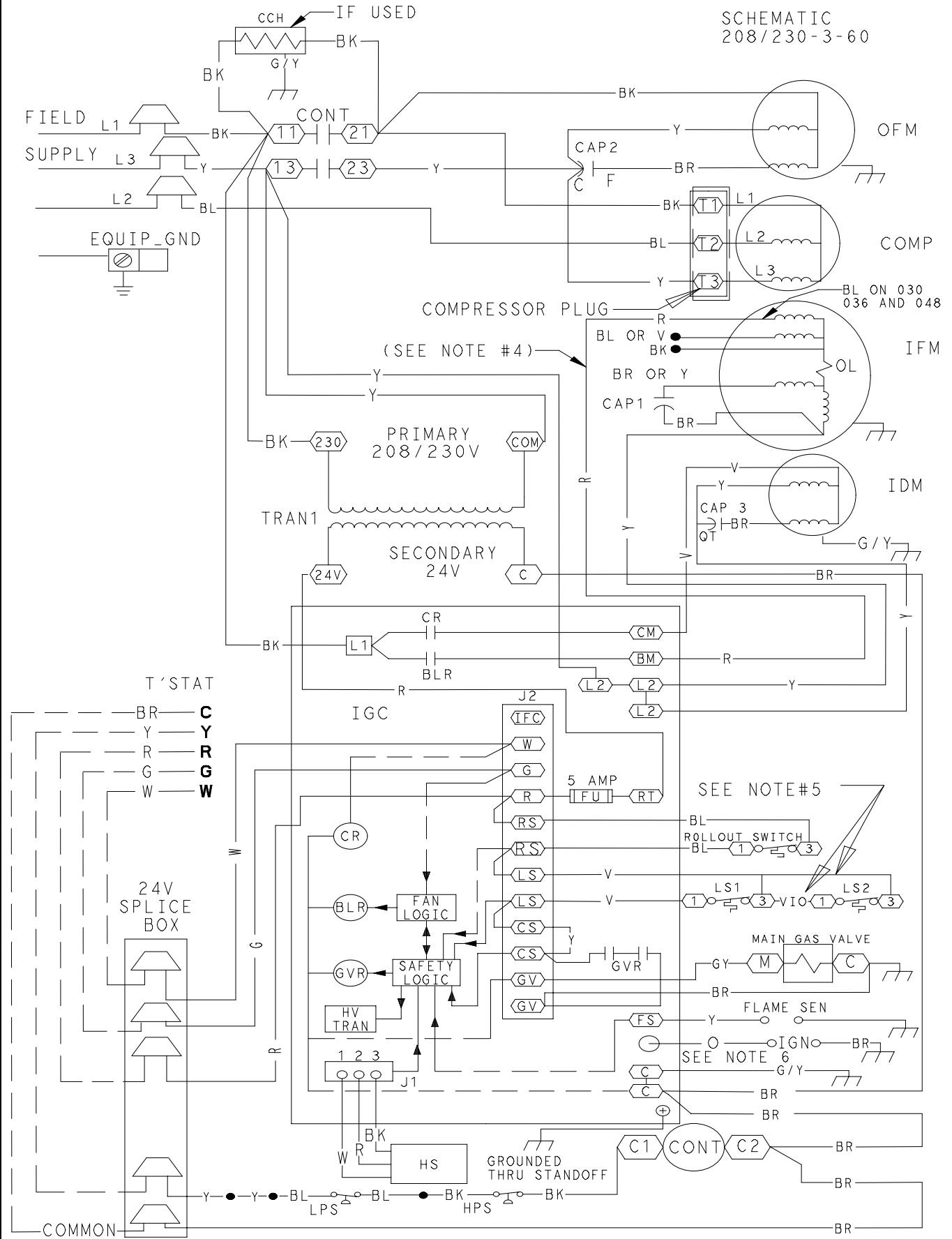
Pressure (psig)		Required Subcooling (°F)						Pressure (kPa)		Required Subcooling (°C)				
		5	10	15	20	25				3	6	8	11	14
189	66	61	56	51	46	41	1303	19	16	13	11	8	5	
196	68	63	58	53	48	43	1351	20	17	15	12	9	6	
203	71	66	61	56	51	46	1399	21	19	16	13	10	8	
210	73	68	63	58	53	48	1448	23	20	17	14	11	9	
217	75	70	65	60	55	50	1496	24	21	18	15	13	10	
224	77	72	67	62	57	52	1544	25	22	19	16	14	11	
231	79	74	69	64	59	54	1593	26	23	20	18	15	12	
238	81	76	71	66	61	56	1641	27	24	21	19	16	13	
245	82	77	72	67	62	57	1689	28	25	22	20	17	14	
252	84	79	74	69	64	59	1737	29	26	23	21	18	15	
260	86	81	76	71	66	61	1792	30	27	25	22	19	16	
268	88	83	78	73	68	63	1848	31	29	26	23	20	17	
276	90	85	80	75	70	65	1903	32	30	27	24	21	19	
284	92	87	82	77	72	67	1958	33	31	28	25	22	20	
292	94	89	84	79	74	69	2013	35	32	29	26	23	21	
300	96	91	86	81	76	71	2068	36	33	30	27	24	22	
309	98	93	88	83	78	73	2130	37	34	31	28	26	23	
318	100	95	90	85	80	75	2192	38	35	32	29	27	24	
327	102	97	92	87	82	77	2254	39	36	33	31	28	25	
336	104	99	94	89	84	79	2316	40	37	34	32	29	26	
345	106	101	96	91	86	81	2378	41	38	35	33	30	27	
354	108	103	98	93	88	83	2440	42	39	36	34	31	28	
364	110	105	100	95	90	85	2509	43	40	38	35	32	29	
374	112	107	102	97	92	87	2578	44	41	39	36	33	30	
384	113	108	103	98	93	88	2647	45	42	40	37	34	31	
394	115	110	105	100	95	90	2716	46	44	41	38	35	32	
404	117	112	107	102	97	92	2785	47	45	42	39	36	33	
414	119	114	109	104	99	94	2854	48	46	43	40	37	34	
424	121	116	111	106	101	96	2923	49	47	44	41	38	35	
434	123	118	113	108	103	98	2992	50	48	45	42	39	36	
444	124	119	114	109	104	99	3061	51	48	46	43	40	37	
454	126	121	116	111	106	101	3130	52	49	47	44	41	38	
464	128	123	118	113	108	103	3199	53	50	48	45	42	39	
474	129	124	119	114	109	104	3268	54	51	48	46	43	40	
484	131	126	121	116	111	106	3337	55	52	49	47	44	41	
494	132	127	122	117	112	107	3406	56	53	50	47	45	42	
504	134	129	124	119	114	109	3475	57	54	51	48	46	43	
514	136	131	126	121	116	111	3544	58	55	52	49	46	44	
524	137	132	127	122	117	112	3612	58	56	53	50	47	45	
534	139	134	129	124	119	114	3681	59	56	54	51	48	45	



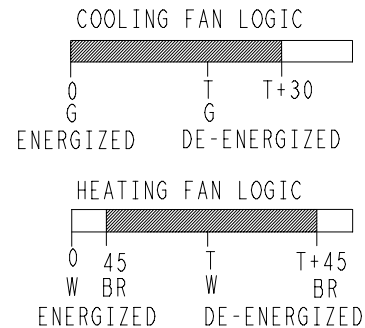
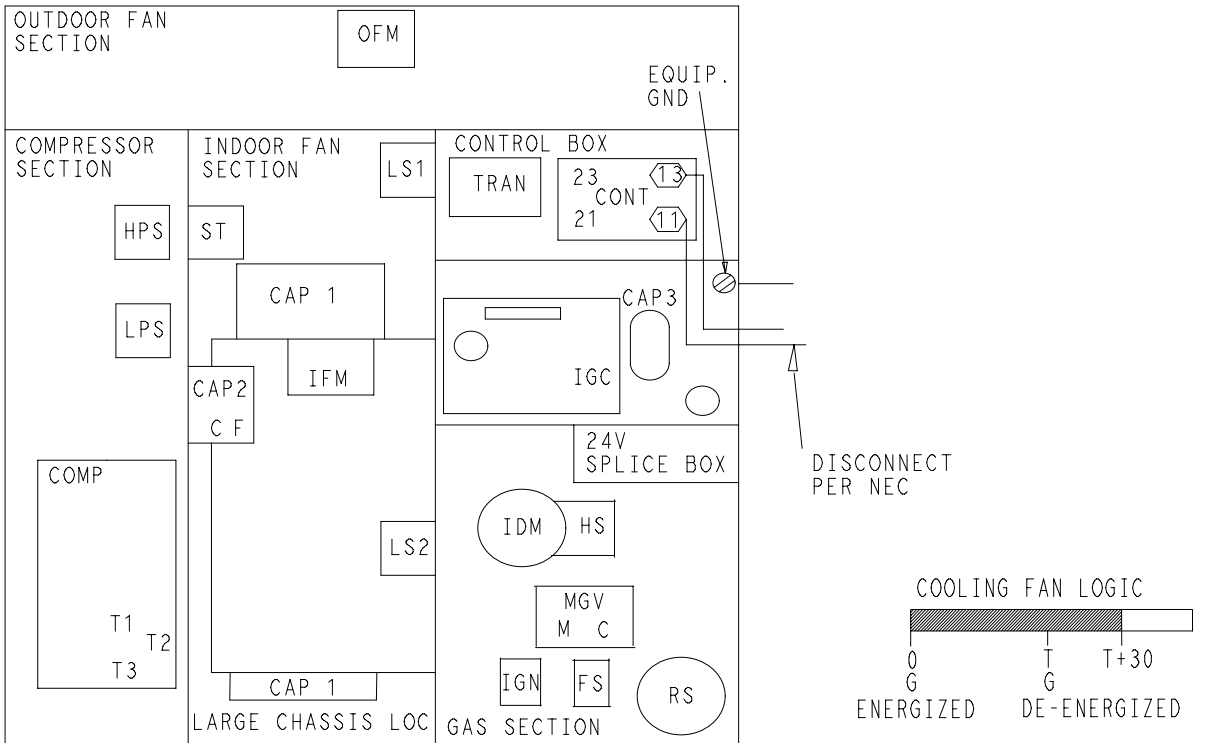
CONNECTION WIRING DIAGRAM

WARNING: ELECTRICAL SHOCK HAZARD DISCONNECT POWER BEFORE SERVICING

SCHEMATIC  
208/230-3-60



UNIT COMPONENT ARRANGEMENT



NOTES:

1. IF ANY OF THE ORIGINAL WIRES FURNISHED ARE REPLACED, THEY MUST BE REPLACED WITH TYPE 90 DEG. C WIRE OR ITS EQUIVALENT.
2. SEE PRICE PAGES FOR THERMOSTAT.
3. USE 75 DEG. COPPER CONDUCTORS FOR FIELD POWER SUPPLY.
4. FOR "HIGH SPEED" IFM, DISCONNECT "RED" OR "BLUE" WIRE FROM IGC BOARD AND CONNECT THE "BLACK" WIRE.
5. ON MODELS 024-036 LSI AND LS2 ARE WIRED IN SERIES. ON MODELS 042-060 HAS LS1 ONLY.
6. SPARK OUTPUT IS MINIMUM 22kV OPEN CIRCUIT VOLTAGE.

LEGEND

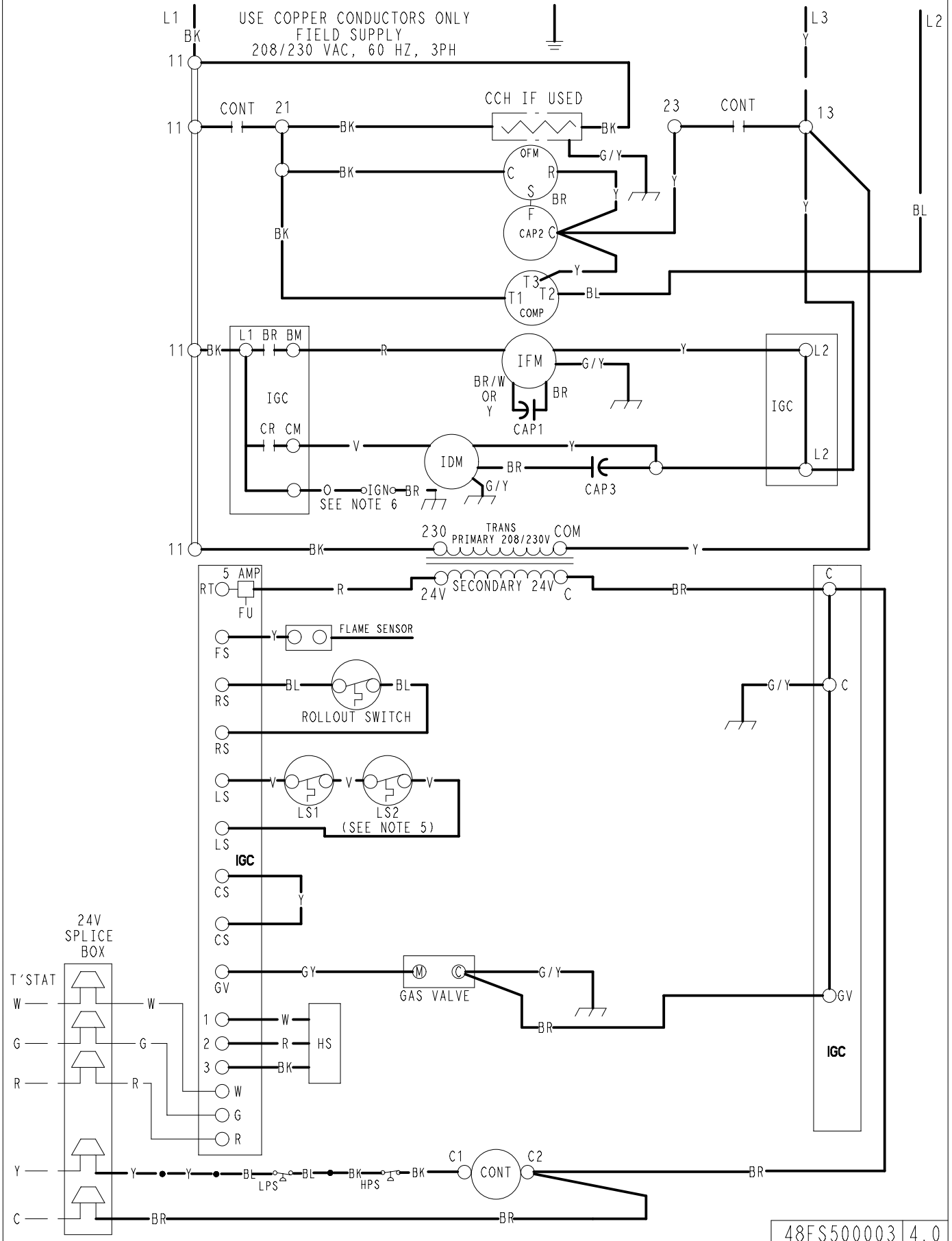
△	FIELD SPLICE	FS	FLAME SENSOR
◻	TERMINAL (MARKED)	FU	FUSE
○	TERMINAL (UNMARKED)	GND	GROUND
○	SPLICE	GVR	GAS VALVE RELAY
◻	SPLICE (MARKED)	HS	HALL EFFECT SENSOR
—	FACTORY WIRING	HV TRAN	HIGH VOLTAGE TRANSFORMER
- -	FIELD CONTROL WIRING	IGN	IGNITOR
---	FIELD POWER WIRING	IGC	INTERGRATED GAS UNIT CONTROLLER
---	ACCESSORY OR OPTIONAL WIRING	IDM	INDUCED DRAFT MOTOR
—	TO INDICATE COMMON POTENTIAL ONLY:	IFM	INDOOR FAN MOTOR
---	NOT TO REPRESENT WIRING	LS	LIMIT SWITCH
BLR	BLOWER RELAY	MGV	MAIN GAS VALVE
CONT	CONTACTOR	OFM	OUTDOOR FAN MOTOR
CAP	CAPACITOR	QT	QUADRUPLE TERMINAL
COMP	COMPRESSOR MOTOR	RS	ROLLOUT SWITCH
CR	COMBUSTION RELAY	TRAN	TRANSFORMER
EQUIP	EQUIPMENT	LPS	LOW PRESSURE SWITCH
		HPS	HIGH PRESSURE SWITCH

COLOR CODE

BK	BLACK
BL	BLUE
BR	BROWN
GY	GRAY
G	GREEN
O	ORANGE
P	PINK
R	RED
V	VIOLET
W	WHITE
Y	YELLOW

LADDER WIRING DIAGRAM

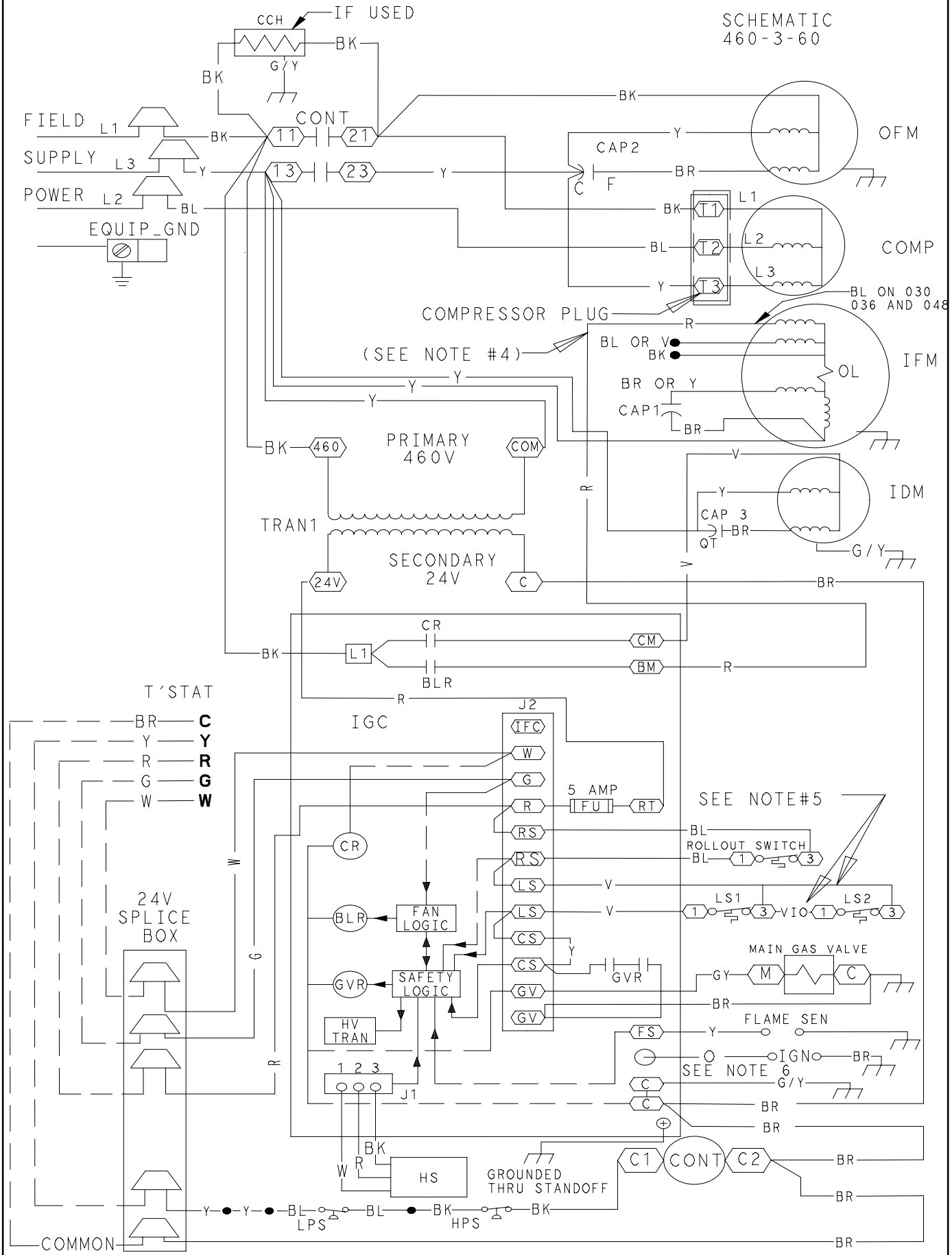
WARNING: ELECTRICAL SHOCK HAZARD DISCONNECT POWER BEFORE SERVICING



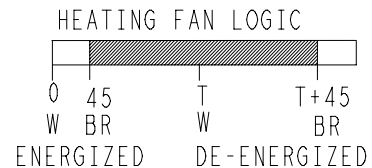
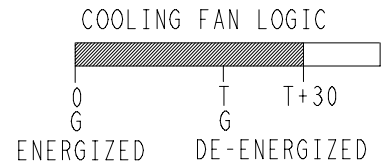
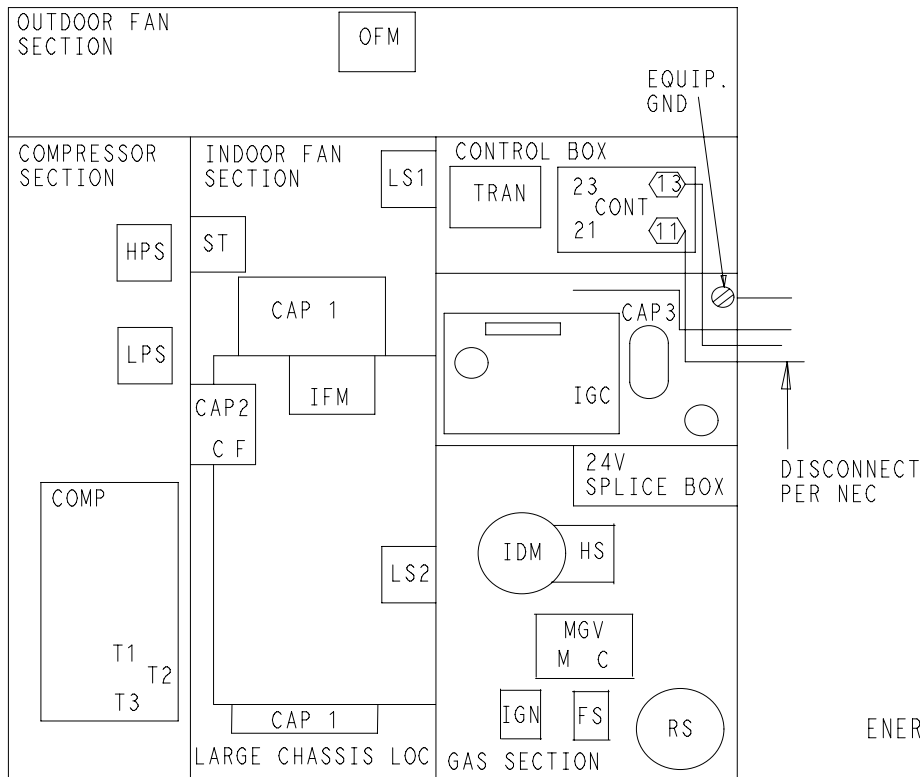
48ES500003 4.0

CONNECTION WIRING DIAGRAM  
 WARNING: ELECTRICAL SHOCK HAZARD DISCONNECT POWER BEFORE SERVICING

SCHEMATIC  
 460-3-60



UNIT COMPONENT ARRANGEMENT



NOTES:

1. IF ANY OF THE ORIGINAL WIRES FURNISHED ARE REPLACED, THEY MUST BE REPLACED WITH TYPE 90 DEG. C WIRE OR ITS EQUIVALENT.
2. SEE PRICE PAGES FOR THERMOSTAT AND SUBBASES.
3. USE 75 DEG. COPPER CONDUCTORS FOR FIELD POWER SUPPLY.
4. FOR "HIGH SPEED" IFM, DISCONNECT "RED" OR "BLUE" WIRE FROM IGC BOARD AND CONNECT THE "BLACK" WIRE.
5. ON MODELS 024-036 LSI AND LS2 ARE WIRED IN SERIES. ON MODELS 042-060 HAS LS1 ONLY.
6. SPARK OUTPUT IS MINIMUM 22KV OPEN CIRCUIT VOLTAGE.

LEGEND

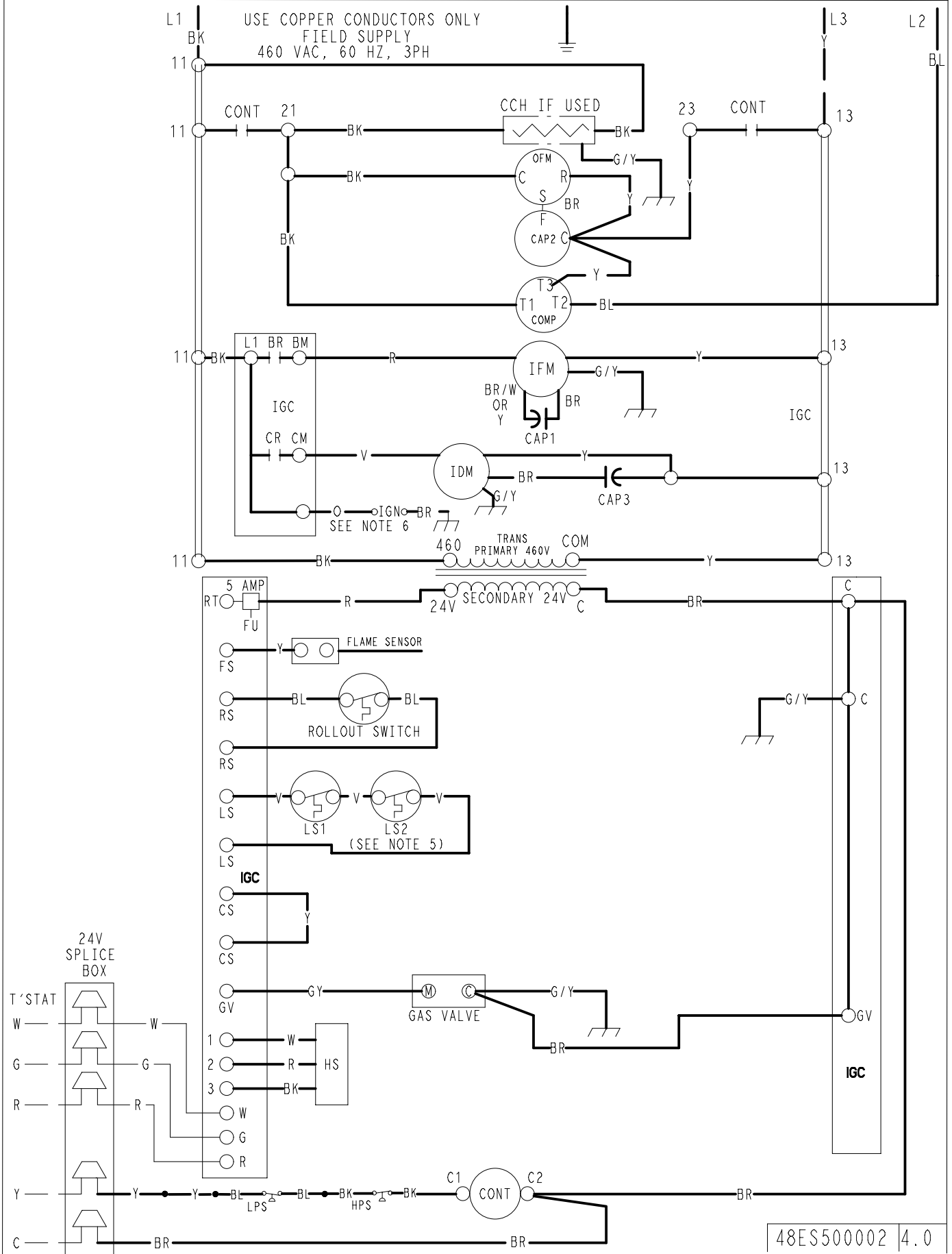
△	FIELD SPLICE	FS	FLAME SENSOR
◻	TERMINAL (MARKED)	FU	FUSE
○	TERMINAL (UNMARKED)	GND	GROUND
○	SPLICE	GVR	GAS VALVE RELAY
◻	SPLICE (MARKED)	HS	HALL EFFECT SENSOR
—	FACTORY WIRING	HV TRAN	HIGH VOLTAGE TRANSFORMER
- - -	FIELD CONTROL WIRING	IGN	IGNITOR
- - -	FIELD POWER WIRING	IGC	INTERGRATED GAS UNIT CONTROLLER
- - -	ACCESSORY OR OPTIONAL WIRING	IDM	INDUCED DRAFT MOTOR
—	TO INDICATE COMMON POTENTIAL ONLY: NOT TO REPRESENT WIRING	IFM	INDOOR FAN MOTOR
BLR	BLOWER RELAY	LS	LIMIT SWITCH
CONT	CONTACTOR	MGV	MAIN GAS VALVE
CAP	CAPACITOR	OFM	OUTDOOR FAN MOTOR
COMP	COMPRESSOR MOTOR	OT	QUADRUPLE TERMINAL
CR	COMBUSTION RELAY	RS	ROLLOUT SWITCH
EQUIP	EQUIPMENT	TRAN	TRANSFORMER
		LPS	LOW PRESSURE SWITCH
		HPS	HIGH PRESSURE SWITCH

COLOR CODE

BK	BLACK
BL	BLUE
BR	BROWN
GY	GRAY
G	GREEN
O	ORANGE
P	PINK
R	RED
V	VIOLET
W	WHITE
Y	YELLOW

LADDER WIRING DIAGRAM

WARNING: ELECTRICAL SHOCK HAZARD DISCONNECT POWER BEFORE SERVICING



48ES500002 4.0