

Parts List, Charging Chart, Wiring Diagram

**PAE036, PAE048 ,PAE060 SERIES
575 Volt**

PACKAGE AIR CONDITIONER UNITS



TABLE OF CONTENTS

CHARGING CHART ----- 2

PARTS LIST ----- 3-4

PARTS DRAWING ----- 5-8

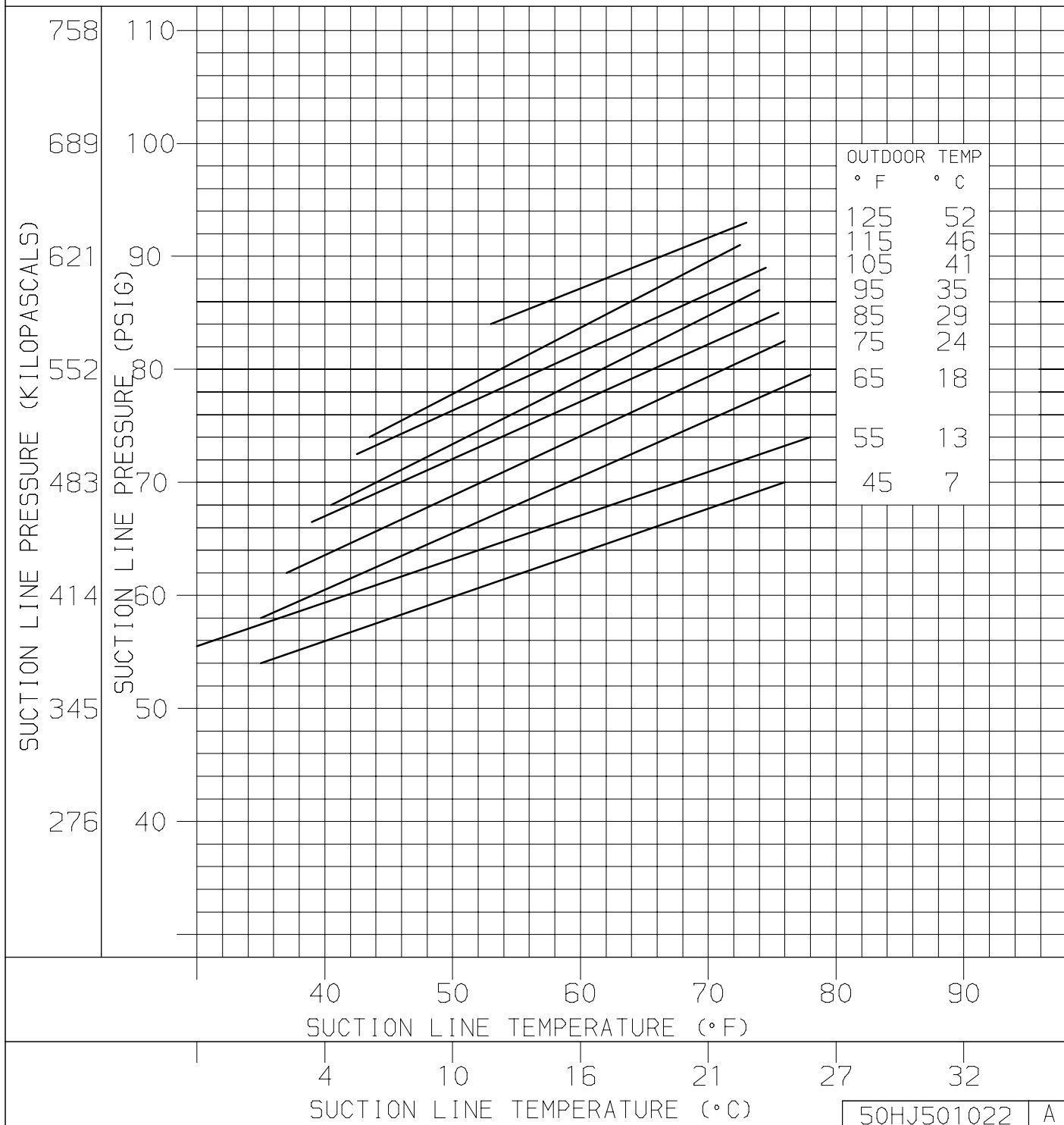
WIRING DIAGRAM ----- 9



PAE036-060

HJ004

CHARGING CHART



PAE036-60 PARTS LIST

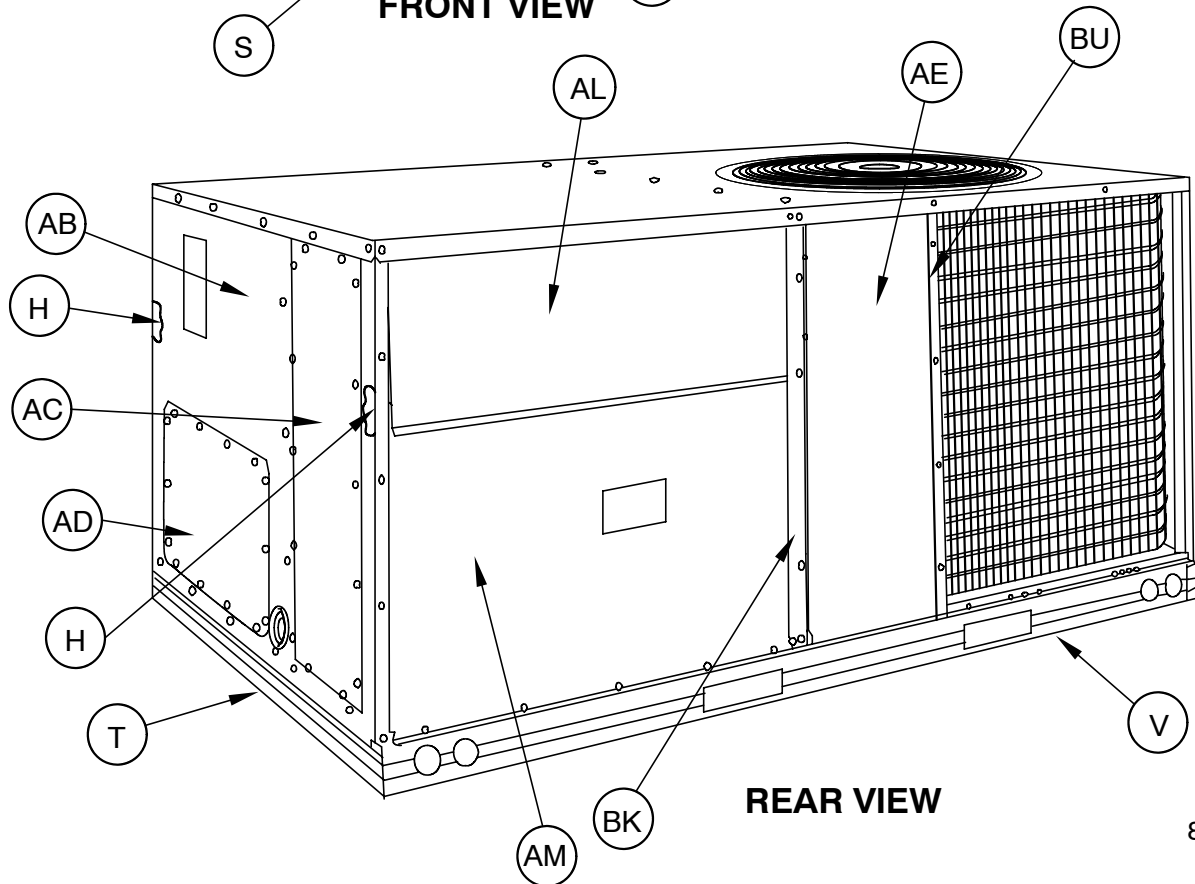
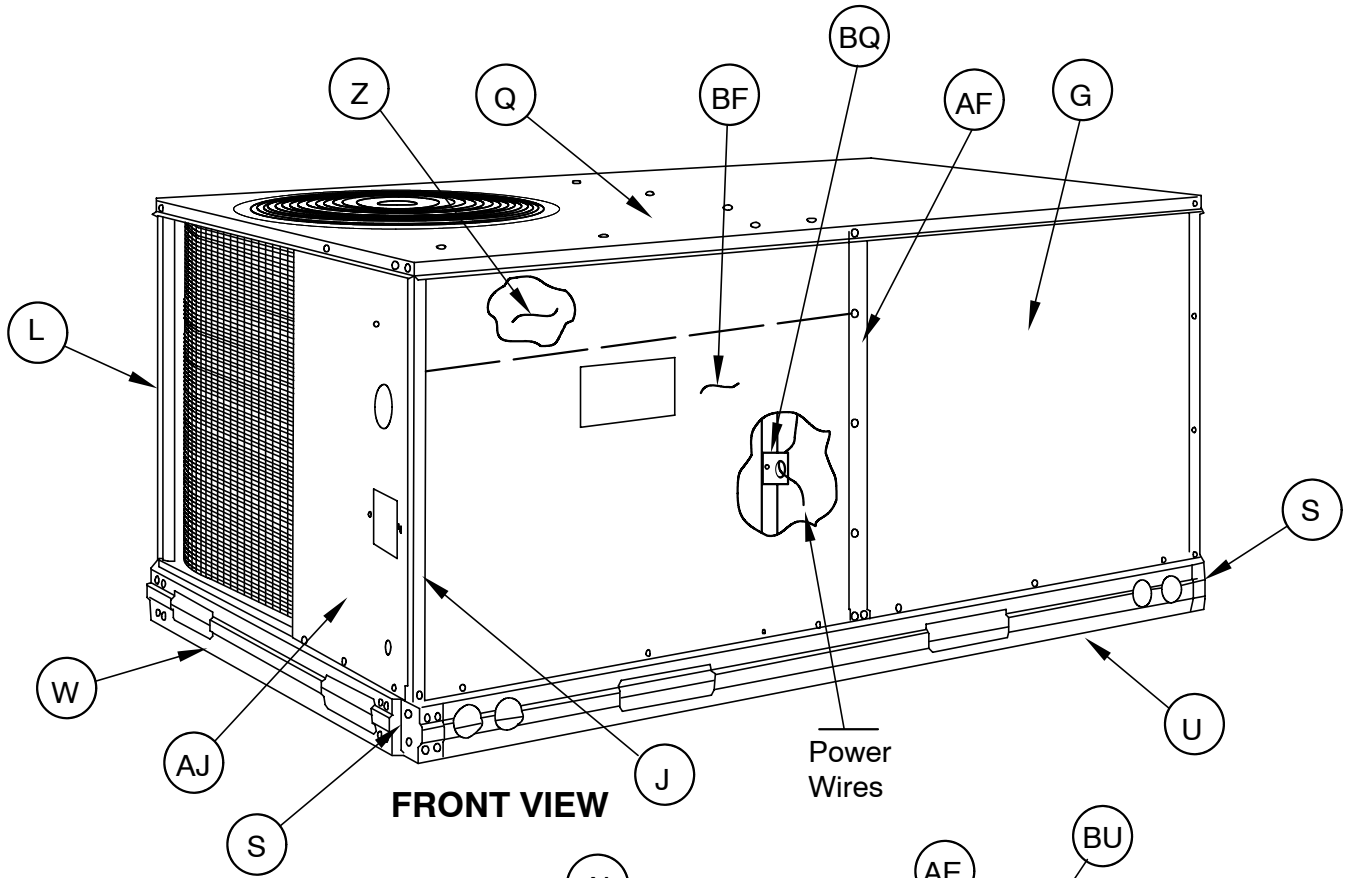
KEY NO.	DESCRIPTION	FAST PARTS NO.	PAE036S000AA	PAE048S000AA	PAE060S000AA
)	HARNESS ASY	1175329	1	1	1
)	PLUG,WIRING ASY	1175284	1	1	1
)	HARNESS ASY	1175281	1	1	1
)	HARNESS ASY	1175838	1	1	*
)	HARNESS ASY	1175663	*	*	1
)	PLUG, WIRING ASY	1171405	1	1	1
01	CONTACTOR	1171160	1	1	1
02	TRANSFORMER	1175311	1	1	1
03	CAPACITOR	1172149	1	1	1
04	CONTACTOR	1173690	1	1	*
04	RELAY	1171809	*	*	1
05	TERMINAL BOARD	1171488	1	1	1
06	BLOWER ASY	1175283	1	1	1
07	BEARING	1175424	2	2	2
08	WHEEL,BLOWER	1175318	1	1	1
09	KEY	1175493	1	1	1
10	MOTOR,INDOOR	1175829	1	1	1
11	PULLEY,BLOWER	1175314	1	*	*
11	PULLEY,BLOWER	1175830	*	1	1
12	PULLEY,MOTOR	1175831	1	1	*
12	PULLEY,MOTOR	1175832	*	*	1
13	BELT	BLTA36	1	1	*
13	BELT	BLTA39	*	*	1
14	COIL ASY, FORMED	1175833	1	*	*
14	COIL ASY, FORMED	1175834	*	1	1
15	COIL ASY	1175835	1	*	*
15	COIL ASY	1175836	*	1	*
15	COIL ASY	1175837	*	*	1
16	CONDUIT	1171428	1	1	1
17	FILTER	1175312	2	2	2
18	MOTOR,OUTDOOR	1175839	1	1	*
18	MOTOR,OUTDOOR	1175840	*	*	1
19	PROPELLER,FAN	1171220	1	1	1
20	SWITCH,LIMIT	1171483	1	1	1
21	COMP ZR34K3-TFE-230	1175828	1	*	*
21	COMP SRJ452HC	1175401	*	1	*
21	COMP ZR57K3-TFE-230	1171148	*	*	1
22	SWITCH,THERMAL	1171252	1	1	1
47	DRIER,FILTER	1171555	1	1	1
52	SWITCH,PRESSURE	1171805	1	1	1
53	SWITCH,PRESSURE	1175321	1	1	1
55	CIRCUIT BREAKER	1175307	1	1	1
56	RELAY	1175841	1	1	1
57	CAPACITOR, MOTOR	1172505	1	1	*
58	TERMINAL BLOCK	1175339	1	1	1
61	RELAY, LOCK OUT	1171434	1	1	1
62	SHAFT, FAN	1175422	1	1	1
63	PLATE, FAN	1175484	1	1	1
64	PLATE, FAN	1175299	1	1	1

PAE036-60 PARTS LIST (continued)

KEY NO.	DESCRIPTION	FAST PARTS NO.	PAE036S000AA	PAE048S000AA	PAE060S000AA
A	SCROLL,FAN	1175260	1	1	1
B	STRAP,CAPACITOR	1171552	2	2	1
C	CONTROL BOX	1175257	1	1	1
D	PLATE,WIRING	1171373	1	1	1
E	BRACKET, MTR MTG	1175842	1	1	*
E	BRACKET, MTR MTG	1175483	*	*	1
F	BRACKET ASY	1175423	2	2	2
G	PANEL ASY	1175229	1	1	1
H	INSULATION ASY	1175230	2	2	2
J	POST,CORNER	1175255	1	1	1
K	PAN ASY	1175243	1	1	1
L	POST,CORNER	1175256	1	1	1
M	DECK,FAN	1175259	1	1	1
N	BRACKET, COIL	1171070	1	1	1
P	PLATE ASY	1175843	1	1	1
Q	COVER ASY	1175280	1	1	1
R	BASE PAN ASY	1175231	1	1	1
S	BRACKET,BASE	1171071	2	2	2
T	GUARD,BASERAIL	1175263	1	1	1
U	RAIL,BASE	1175265	1	1	1
V	RAIL,BASE	1175266	1	1	1
W	RAIL, BASE	1175334	1	1	1
X	PLATE,BLOCKOFF	1175294	1	1	1
Y	GRILLE,OUTLET	1171267	1	1	1
Z	COVER,CONTROL	1171169	1	1	1
AA	PANEL,BLOCKOFF	1175337	1	1	1
AB	PANEL ASY	1175226	1	1	1
AC	COVER ASY	1175227	1	1	1
AD	COVER,SUPPLY	1175228	1	1	1
AE	PANEL,ACCESS	1175293	1	1	1
AF	POST,CENTER	1175331	1	1	1
AG	PARTITION,GAS	1175292	1	1	1
AH	BRACKET,INDOOR	1175262	1	1	1
AJ	PANEL,OUTDOOR	1171846	1	1	1
AK	GROMMET	1171270	4	*	4
AK	GROMMET	1171269	*	4	*
AL	PANEL ASY, UPPER	1175241	1	1	1
AM	PANEL ASY, LOWER	1175242	1	1	1
BF	PANEL,ACCESS	1175341	1	1	1
BK	POST,CENTER	1175254	1	1	1
BL	FRAME ASY	1175238	1	1	1
BP	PLATE, MOTOR	1175844	1	1	*
BP	PLATE ASY, MTR MTG	1175664	*	*	1
BQ	BRACKET,MOUNT	1175335	1	1	1
BS	COVER,HEAT	1175332	2	2	2
BT	BRACKET,HEAT	1175333	1	1	1
BU	PANEL,COIL	1175327	*	1	1
BV	BASE PAN ASY	1175328	1	1	1

PAE036-060 Series 3-5 Ton

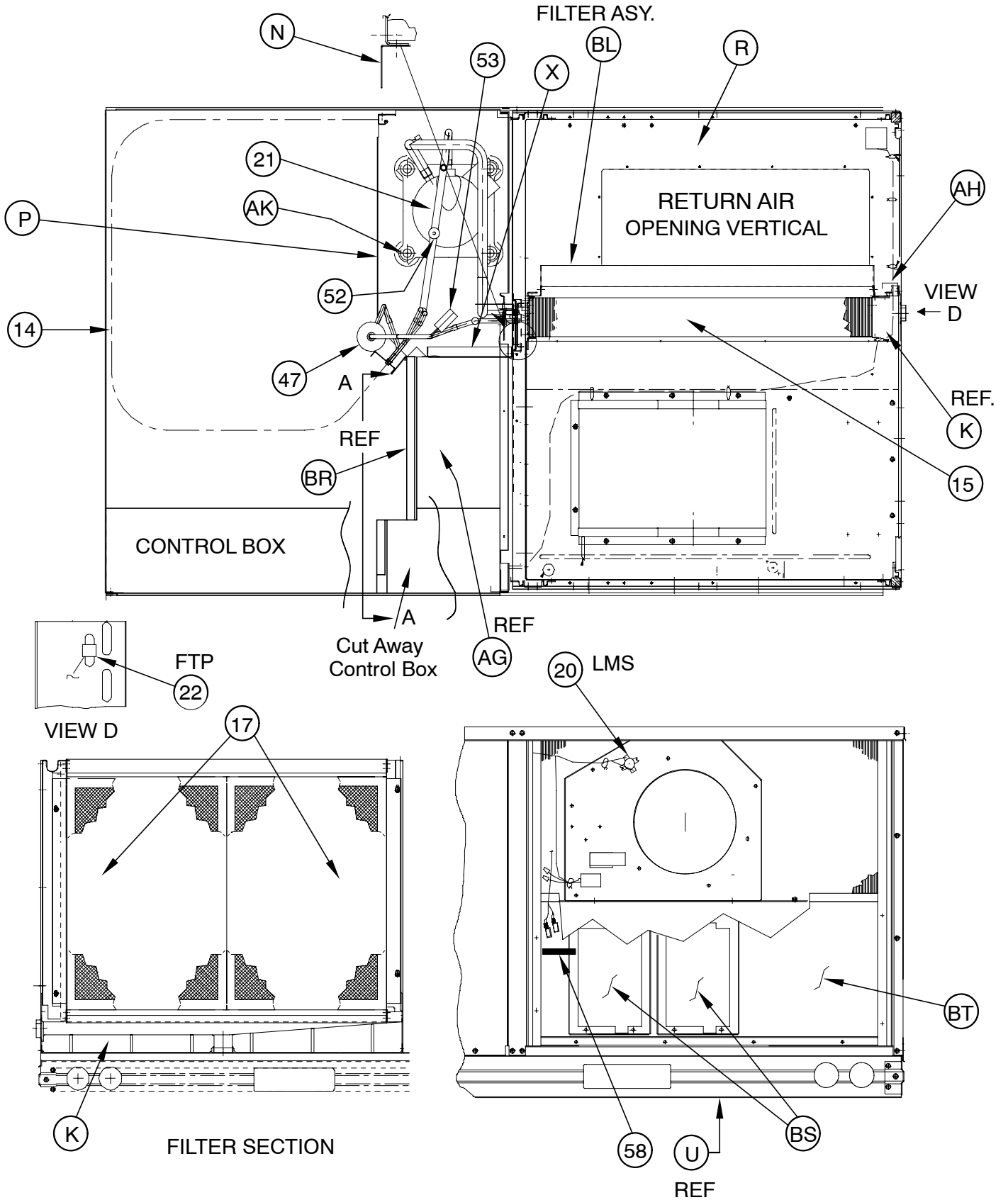
NOTE: This illustration is for reference only. Your unit may differ in appearance or may not include all components shown.



80-50-73

PAE036-060 Series 3-5 Ton

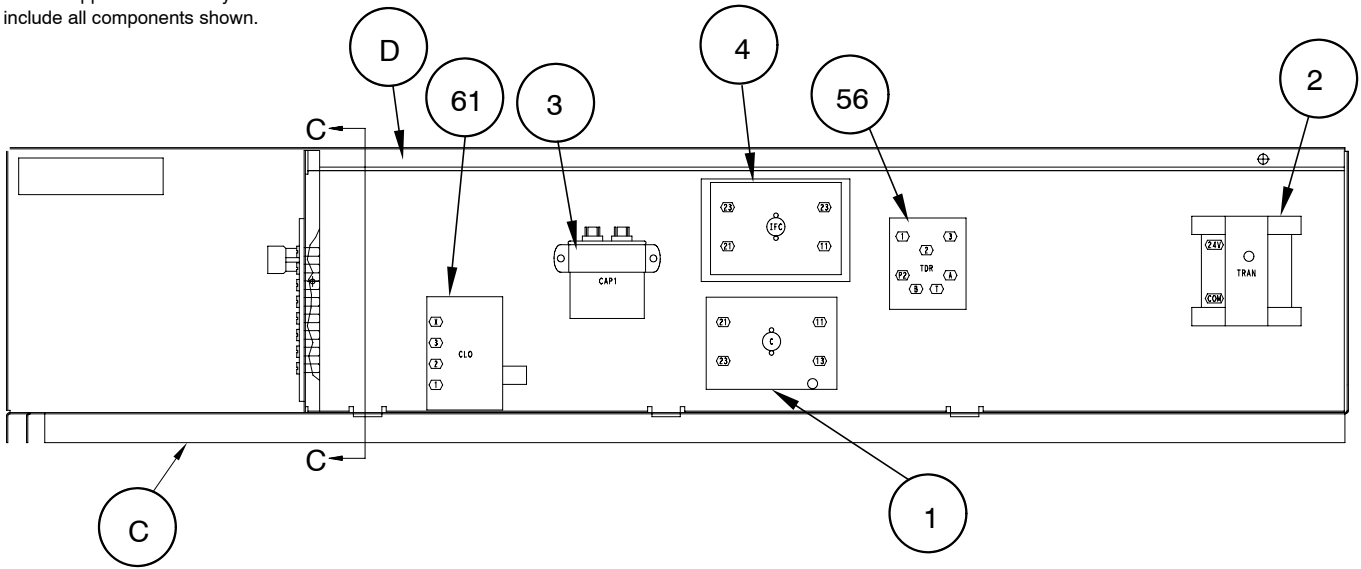
NOTE: This illustration is for reference only. Your unit may differ in appearance or may not include all components shown.



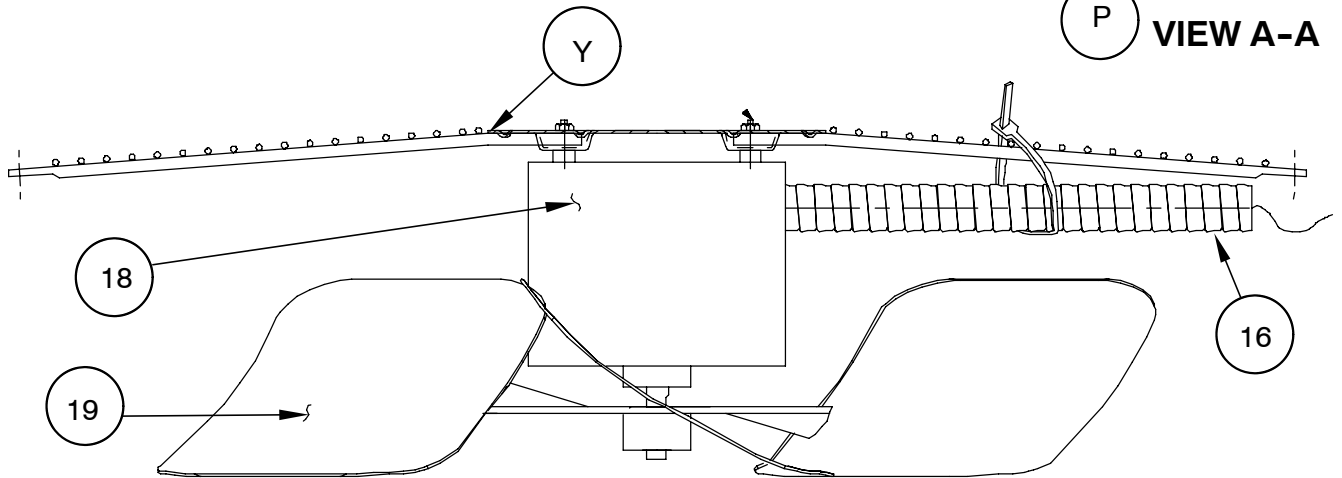
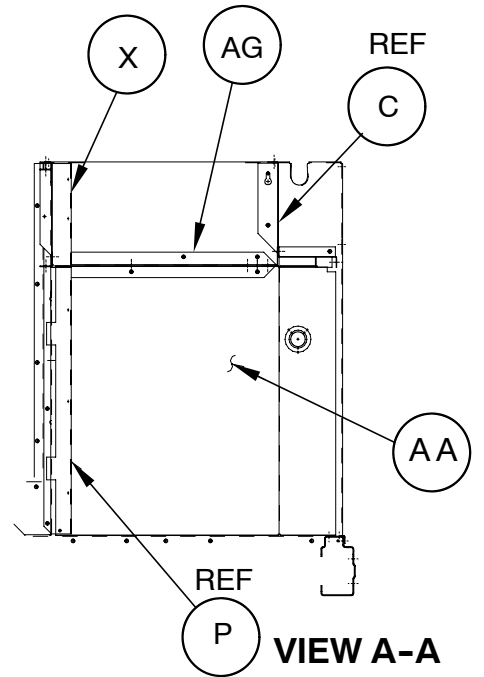
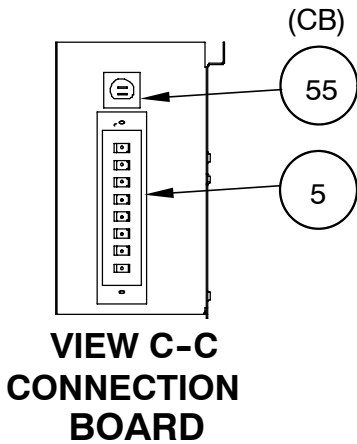
80-50-74

PAE036-060 Series 3-5 Ton

NOTE: This illustration is for reference only. Your unit may differ in appearance or may not include all components shown.



CONTROL BOX ASY.

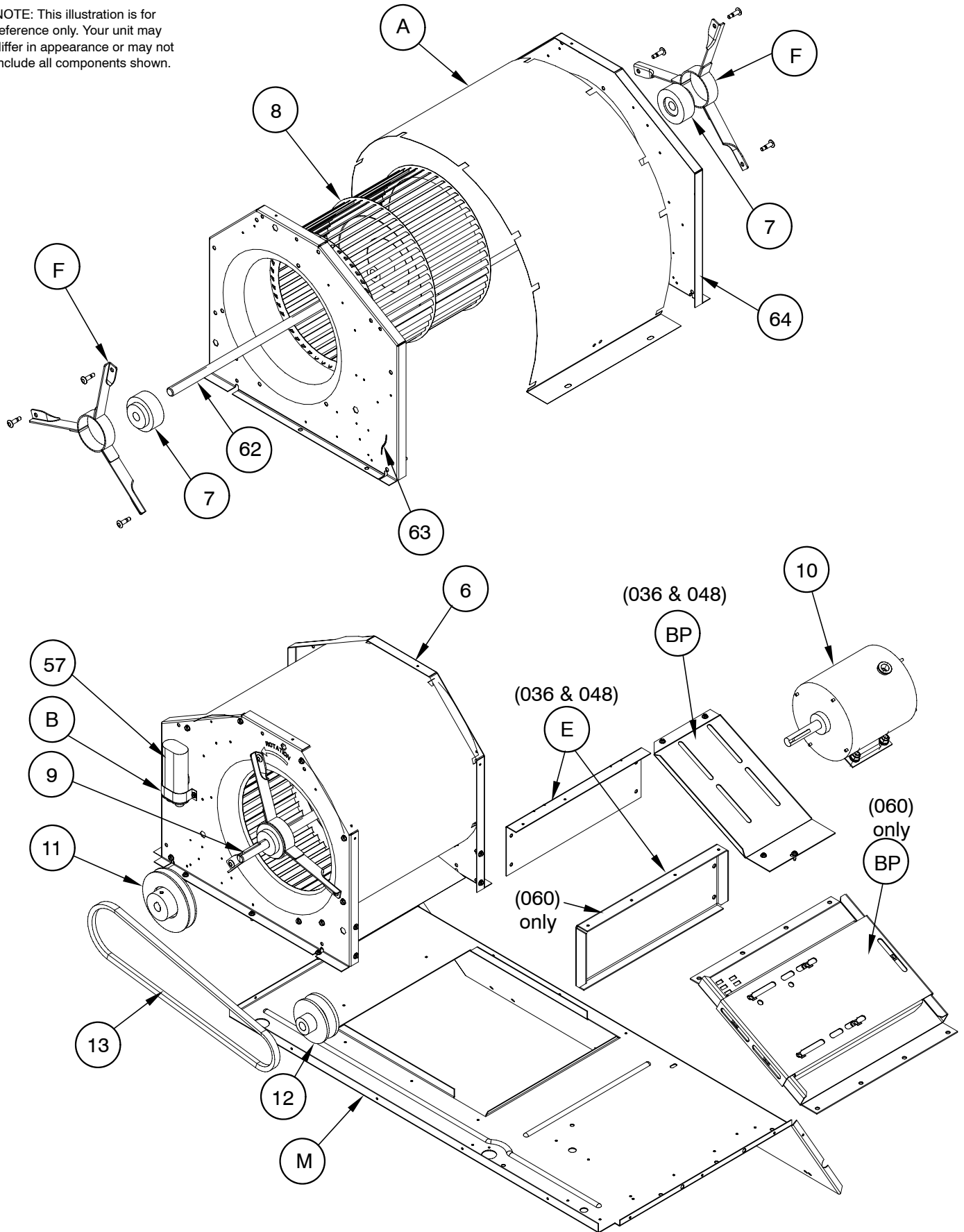


OUTDOOR FAN MOTOR SECTION

80-50-75

PAE036-060 Series 3-5 Ton

NOTE: This illustration is for reference only. Your unit may differ in appearance or may not include all components shown.



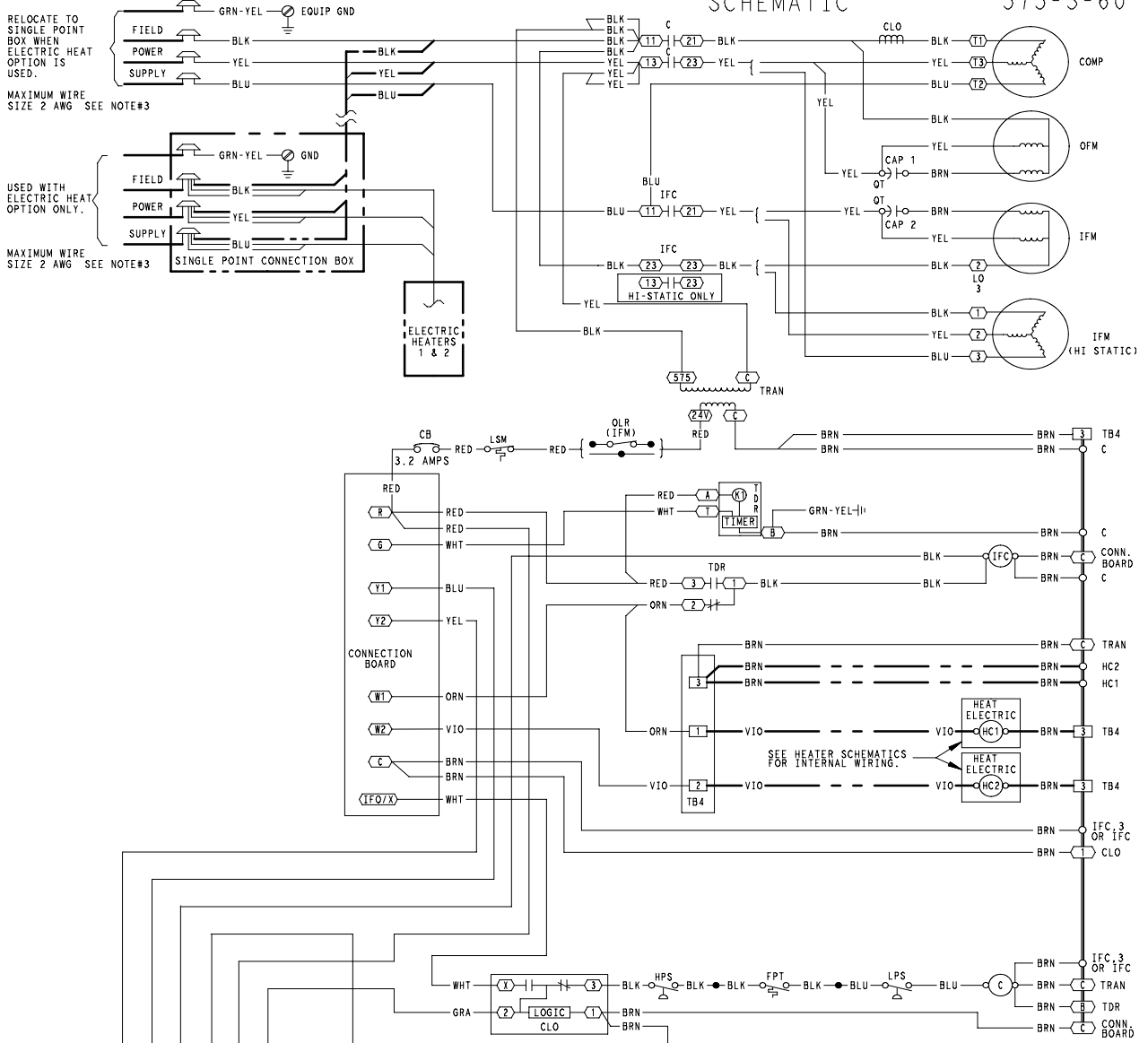
BELT DRIVE FAN PARTS

80-50-76

PAE036-060 575V-3-60

SCHEMATIC

575-3-60



- LEGEND**
- FIELD SPLICE
 - MARKED WIRE
 - TERMINAL (MARKED)
 - TERMINAL (UNMARKED)
 - TERMINAL BLOCK
 - SPLICE
 - SPLICE (MARKED)
 - FACTORY WIRING
 - FIELD CONTROL WIRING
 - FIELD POWER WIRING
 - ACCESSORY OR OPTIONAL WIRING
- FAN SEQUENCE**
- ENERGIZED DE-ENERGIZED
- LEGEND**
- FIELD SPLICE
 - MARKED WIRE
 - TERMINAL (MARKED)
 - TERMINAL (UNMARKED)
 - TERMINAL BLOCK
 - SPLICE
 - SPLICE (MARKED)
 - FACTORY WIRING
 - FIELD CONTROL WIRING
 - FIELD POWER WIRING
 - ACCESSORY OR OPTIONAL WIRING
- COMPONENT ARRANGEMENT**
- | VOLTAGE RATING | CB | MUST TRIP |
|----------------|----------------------------------|-----------|
| 24V | POTTER & BRUMFIELD W28-X1075-3.2 | 3.2 |

