

Parts List, Tech Labels & Wiring Diagrams for PAB & PAMC Series

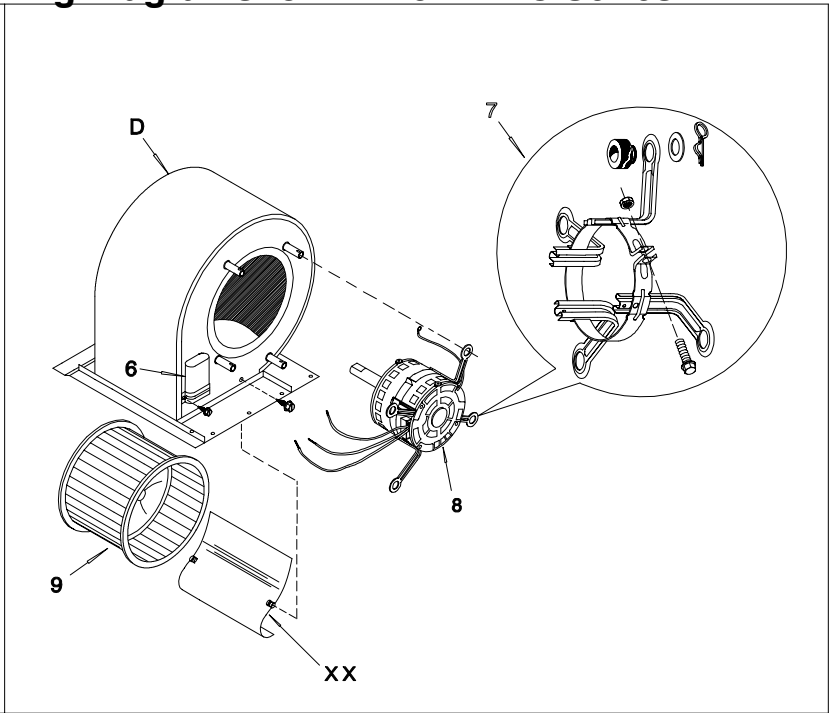
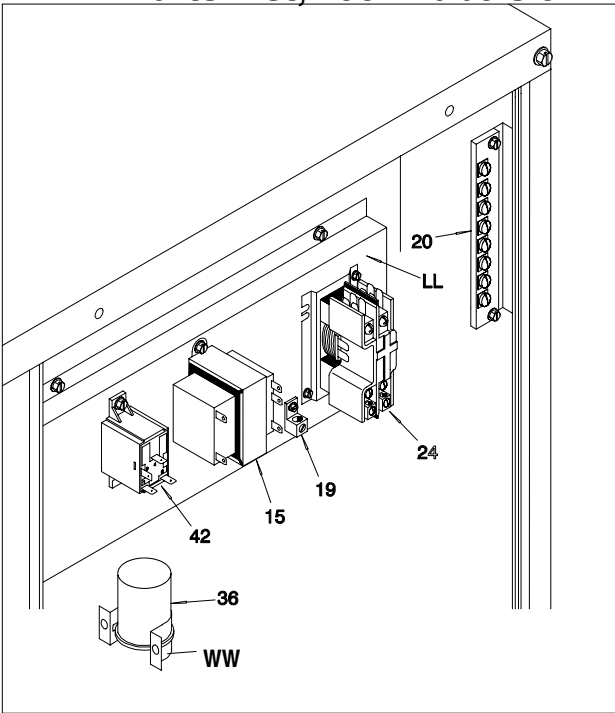
**Model Numbers: PAB036N1HA, PAB036N1LA, PAB036N1SA, PAB048N1HC, PAB048N1LC, PAB060N1HC, PAB060N1LC, PAB060N1SC
PAMC36HA, PAMC36FA, PAMC36NA, PAMC48HC, PAMC48FC, PAMC60HC, PAMC60FC, PAMC60NC**

NO DESCRIPTION PART NUM.			PAB								
			036N1HA	036N1LA	036N1SA	048N1HC	048N1LC	048N1SC	060N1HC	060N1LC	060N1SC
			PAMC								
			36HA	36FA	36NA	48HC	48FC	48NC	60HC	60FC	60NC
1	Compressor, CR32K6TF5	1054609	1								
1	CR32K6TFD	1065350	*	1							
1	CR32K6TFE	1065354	*	*	1						
1	ZR45KCTF5	1082647	*	*	*	1					
1	ZR45KCTFD	1082648	*	*	*	*	1				
1	ZR45KC	1081432	*	*	*	*	*	1			
1	ZR61KCTF5	1069413	*	*	*	*	*	*	1		
1	ZR61KCTFD	1069414	*	*	*	*	*	*	*	1	
1	ZR61KCTFE	1097118	*	*	*	*	*	*	*	*	1
2	Motor, Condenser Fan	1065751	1	*	*	1	*	*	1	*	
2		1054575	*	1	*	*	1	*	*	1	
2		1054574	*	*	1	*	*	1	*	*	1
3	Fan, Condenser	1080791	1	1	1						
3		1080792	*	*	*	1	1	1	1	1	1
5	Coil, Condenser	1065064	1	1	1						
5		1082448	*	*	*	1	1	1	1	1	1
6	Capacitor, 7.5 Mfd., 370 Volt	1094239	1	1	1						
6	20 Mfd., 440 Volt	1094968	*	*	*	1	1	1	1	1	1
7	Mount Kit, Blower Motor	1004905	1	1	1						
7		1002804	*	*	*	1	1	1	1	1	1
8	Motor, Blower	1054583	1	1	1						
8		1065129	*	*	*	1	1	1	1	1	1
9	Wheel, Blower 10-8 DD	600587	1	1	1						
9	11-11 DD	1054593	*	*	*	1	1	1	1	1	1
11	Coil, Evaporator	1065602	1	1	1						
11		1082451	*	*	*	1	1	1			
11		1082453	*	*	*	*	*	*	1	1	1
14	Capillary Tube Asy	1065507	1	1	1						
14	Feeder Tube Asy	1081492	*	*	*	1	1	1			
14		1081493	*	*	*	*	*	*	1	1	1
15	Transformer, 208-240V Pri, 24V Sec. 65VA	1054637	1	1	1	1	1	1	1	1	1
19	Lug, Ground	91590	1	1	1	1	1	1	1	1	1
20	Board, Terminal	1066159	1	1	1	1	1	1	1	1	1
24	Contact, 30 Amp., 3 Pole	607339	1	1	1	1	1	1	1	1	1
27	Grommet, Compressor Mount	1053188	4	4	4						
27		1052060	*	*	*	4	4	4	4	4	4
28	Switch, Low Pressure	1071317	1	1	1	1	1	1	1	1	1
36	Capacitor, 10 Mfd., 440 Volt	1094965	1	1	1	1	1	1	1	1	1
41	Port Valve Assembly	1080745	1	1	1						
41		1083939	*	*	*	1	1	1	1	1	1
42	Relay, SPDT	1058148	1	1	1	1	1	1	1	1	1
43	Manifold, Condenser (Dis)	1054555	1	1	1						
43		1081458	*	*	*	1	1	1	1	1	1
44	Manifold, Condenser (Liquid)	1082421	*	*	*	1	1	1	1	1	1
45	Drier, Filter	713894	1	1	1	1	1	1	1	1	1
48	Manifold, Evaporator	1065616	1	1	1						
48		1081494	*	*	*	1	1	1			
48		1082409	*	*	*	*	*	*	1	1	1
53	Switch, Temperature	1066247	1	1	1	1	1	1	1	1	1
54	Switch, High Pressure	1070152	1	1	1	1	1	1	1	1	1
55	Filter, Air 20x30x2"	1054503	2	2	2	2	2	2	2	2	2
56	Transformer, High Voltage	1065245	*	1	*	*	1	*	*	1	*
56		1065745	*	*	1	*	*	1	*	*	1
60	Control, Flow	1082405	*	*	*	1	1	1			
60		1082406	*	*	*	*	*	*	1	1	1

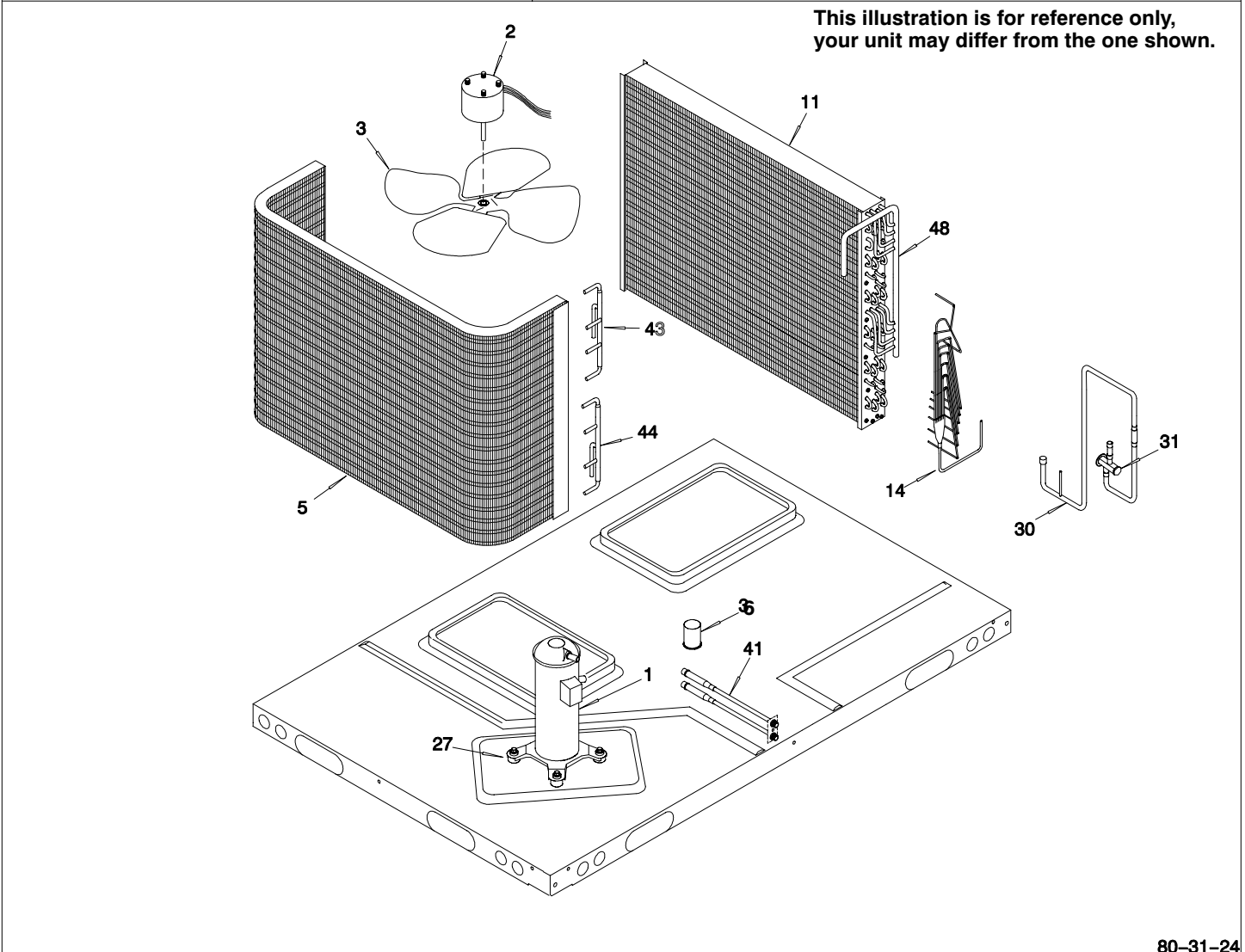
Parts List, Tech Labels & Wiring Diagrams for PAB & PAMC Series

			PAB								
			036N1HA	036N1LA	036N1SA	048N1HC	048N1LC	048N1SC	060N1HC	060N1LC	060N1SC
			PAMC								
NO	DESCRIPTION	PART NUM.	36HA	36FA	36NA	48HC	48FC	48NC	60HC	60FC	60NC
A	Grille, Outlet	1072842	1	1	1	1	1	1	1	1	1
AA	Cover, Duct	1068158	2	2	2	2	2	2	2	2	2
AB	Retainer, Filter	1054517	2	2	2	2	2	2	2	2	2
B	Panel, Top	1068157	1	1	1	1	1	1	1	1	1
C	Orifice, Condenser Fan	1065725	1	1	1	1	1	1	1	1	1
CC	Bracket, Supply Air	1054525	1	1	1	1	1	1	1	1	1
D	Housing, Blower	1065300	1	1	1						
D		1066363	*	*	*	1	1	1	1	1	1
E	Deck, Blower	1065948	1	1	1	1	1	1	1	1	1
F	Panel, Access	1068181	1	1	1	1	1	1	1	1	1
FF	Baffle, Air	1054522	1	1	1	1	1	1	1	1	1
G	Plate, Block Off	1066107	1	1	1	1	1	1	1	1	1
H	Panel, Division	1065943	1	1	1	1	1	1	1	1	1
J	Post, Electrical Corner	1068193	1	1	1	1	1	1	1	1	1
JJ	Nut, Cap	1067902	4	4	4	4	4	4	4	4	4
K	Bracket, Terminal Board Mtg.	1066106	1	1	1	1	1	1	1	1	1
KK	Baffle, Air	1066364	*	*	*	1	1	1	1	1	1
L	Plate, Conduit	1068179	1	1	1	1	1	1	1	1	1
LL	Plate, Control	1066168	1	1	1	1	1	1	1	1	1
M	Panel, Electrical Access	1068186	1	1	1	1	1	1	1	1	1
MM	Bracket, Filter Top	1065618	1	1	1	1	1	1	1	1	1
N	Panel, Pressure Port	1068164	1	1	1	1	1	1	1	1	1
N1	Panel, Compressor Access	1068176	1	1	1						
NN	Support, Filter Top	1054502	1	1	1	1	1	1	1	1	1
O	Plate, Pressure Port	1068189	1	1	1	1	1	1	1	1	1
OO	Panel, Coil Support	1082434	1	1	1	1	1	1	1	1	1
PP	Panel, Heating Area	1054508	1	1	1	1	1	1	1	1	1
QQ	Baffle, Coil	1082435	1	1	1	1	1	1	1	1	1
R	Post, Corner	1068172	1	1	1	1	1	1	1	1	1
RR	Panel, Drain Outlet	1068162	1	1	1	1	1	1	1	1	1
S	Rail, Base	1065001	2	2	2	2	2	2	2	2	2
S1	Rail, Base	1054464	1	1	1	1	1	1	1	1	1
S2	Rail, Base	1084078	1	1	1	1	1	1	1	1	1
SS	Panel, Filter Access	1068175	1	1	1	1	1	1	1	1	1
T	Panel, Base	1054463	1	1	1	1	1	1	1	1	1
U	Panel, Return Air	1068160	1	1	1	1	1	1	1	1	1
UU	Post, Return Air	1068168	1	1	1	1	1	1	1	1	1
V	Partition, Return Air	1054471	1	1	1	1	1	1	1	1	1
VV	Post, Center	1068163	1	1	1	1	1	1	1	1	1
WW	Clamp, Capacitor	1095020	1	1	1						
WW		1095022	*	*	*	1	1	1	1	1	1
X	Pan, Drain	1068366	1	1	1	1	1	1	1	1	1
XX	Panel, Cut Off	95143	1	1	1						
XX		1065073	*	*	*	1	1	1	1	1	1
Y	Bracket, Evaporator	1082436	1	1	1	1	1	1	1	1	1
YY	Bracket, Blower Support	1065030	*	*	*	1	1	1	1	1	1
Z	Panel, Supply Air	1068161	1	1	1	1	1	1	1	1	1
ZZ	Handle, Filter Door	1068209	1	1	1	1	1	1	1	1	1
)(Manual, Parts List	513041004	1	1	1	1	1	1	1	1	1
)(Manual, Installation	513011001	1	1	1	1	1	1	1	1	1

Parts List, Tech Labels & Wiring Diagrams for PAB & PAMC Series



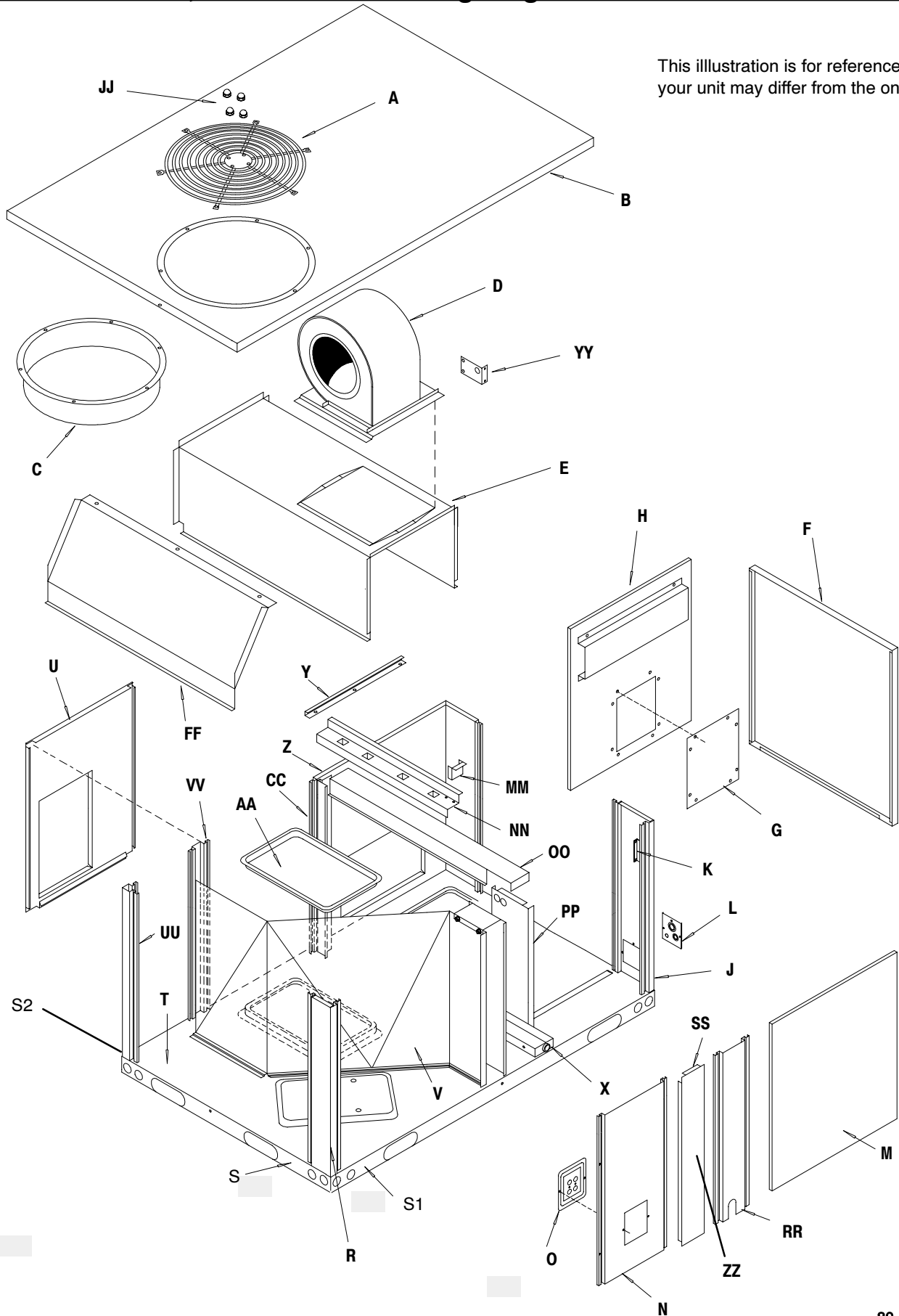
This illustration is for reference only, your unit may differ from the one shown.



80-31-24

Parts List, Tech Labels & Wiring Diagrams for PAB & PAMC Series

This illustration is for reference only,
your unit may differ from the one shown.



80-31-25

Parts List, Tech Labels & Wiring Diagrams for PAB & PAMC Series

3 Ton - 230 Volt

Model or Style No. PAB036N1H, PAMC36H		Performance Data: 80°F Dry Bulb Indoor											
Specifications		Coil – Internal					Rated 1200 CFM					.20 ESP Wet.	
Electrical: Voltage/Phase/Hz Branch Circuit Ampacity Wire Size/Max. Ft. Time Delay Fuse Size Max. Fuse/HACR Brk. Boost Transformer	208/230–3–60 17.8 No. 10 / 64' 25 25 –	Low Wet Bulb (63°F)					High Wet Bulb (69°F)						
		Ambient Outdoor °F	Approx. MBTUH	Sens. Total Ratio	PSIG. Liquid (Head)	PSIG. Suct.	Unit Amps	Ambient Outdoor °F	Approx. MBTUH	Sens. Total Ratio	PSIG. Liquid (Head)	PSIG. Suct.	Unit Amps
		65	34.7	0.88	171	65	10.2	65	38.0	0.62	185	75	10.7
		75	34.0	0.90	192	69	10.9	75	37.2	0.64	207	79	11.5
		85	33.4	0.92	218	73	11.6	85	36.5	0.66	235	83	12.2
		95	32.5	0.94	248	76	12.3	95	35.6	0.67	268	87	13.0
105	31.0	0.95	278	79	18.0	105	33.9	0.68	301	90	19.0		
115	28.4	0.95	307	82	19.0	115	31.0	0.68	332	94	20.0		
Fan Motor: H.P./Type FLA/LRA Speeds/CFM Cap. MFD/Volts		COND.	EVAP.										
		3 / 4PSC 2.6 / 9.52 1 / 3500 10 / 440	1 / 2 PSC 4.0 / 7.09 4 / 1665 7.5 / 370										
Compressor: FLA/LRA Run Cap. MFD./Volts Acc. Start Kit		Blower Performance Data (Add 0.05 In. W.C. for wet coil)											
External Static Pressure Inches of W. C.		CFM @ 230V – Dry Coil (No filter)											
		TAP	LOW	MED L	MED H	HIGH							
		.10	---	---	---	---							
		.20	---	1430	1558	1665							
		.30	1235	1408	1522	1617							
		.40	1173	1375	1480	1566							
		.50	1158	1332	1428	1507							
		.60	1152	1275	1365	1437							
		.70	1115	1205	1285	1353							
		CFM @ 208V – Dry Coil (No filter)											
		TAP	LOW	MED L	MED H	HIGH							
		.10	---	---	---	---							
		.20	---	1225	1358	1500							
		.30	1123	1217	1339	1475							
.40	1113	1202	1316	1439									
.50	1095	1178	1287	1398									
.60	1064	1140	1245	1345									
.70	1016	1085	1187	1268									
Service Driers: Liquid/Charge Suction		30 cu in / 17oz 30 sq in											
Ref. Charge (R-22 Oz.)		104											
Clearances See Installation Instructions													
Note: Optimum operating charge will produce 15° – 25° F suction line superheat at compressor with 82° F outdoor ambient and 80° F Dry Bulb (67° F Wet Bulb) indoor temperature at rated airflow.											1068223 2–14–95 AH–1		

3 Ton - 460 Volt

Model or Style No. PAB036N1L, PAMC36F		Performance Data: 80°F Dry Bulb Indoor											
Specifications		Coil – Internal					Rated 1200 CFM					.20 ESP Wet.	
Electrical: Voltage/Phase/Hz Branch Circuit Ampacity Time Delay Fuse Size Max. Fuse/HACR Brk. Boost Transformer	460–3–60 9.1 15 15 – – – –	Low Wet Bulb (63°F)					High Wet Bulb (69°F)						
		Ambient Outdoor °F	Approx. MBTUH	Sens. Total Ratio	PSIG. Liquid (Head)	PSIG. Suct.	Unit Amps	Ambient Outdoor °F	Approx. MBTUH	Sens. Total Ratio	PSIG. Liquid (Head)	PSIG. Suct.	Unit Amps
		65	34.7	0.88	171	65	4.3	65	38.0	0.62	185	75	4.6
		75	34.0	0.90	192	69	4.6	75	37.2	0.64	207	79	4.9
		85	33.4	0.92	218	73	4.9	85	36.5	0.66	235	83	5.2
		95	32.7	0.94	248	76	5.2	95	35.6	0.67	268	87	5.5
105	31.0	0.95	278	79	5.5	105	33.9	0.68	301	90	5.8		
115	28.4	0.95	307	82	5.8	115	31.0	0.68	332	94	6.1		
Fan Motor: H.P./Type FLA/LRA Speeds/CFM Cap. MFD/Volts		COND.	EVAP.										
		3 / 4 PSC 1.4 / 4.8 1 / 3500 10 / 440	1 / 2 PSC 2.0 / 3.6 4 / 1200 7.5 / 370										
Compressor: FLA/LRA Run Cap. MFD./Volts Acc. Start Kit		Blower Performance Data (Add 0.05 In. W.C. for wet coil)											
External Static Pressure Inches of W. C.		CFM @ 460V – Dry Coil (No filter)											
		TAP	LOW	MED L	MED H	HIGH							
		.10	---	---	---	---							
		.20	---	1430	1558	1665							
		.30	1235	1408	1522	1617							
		.40	1173	1375	1480	1566							
		.50	1158	1332	1428	1507							
		.60	1152	1275	1365	1437							
		.70	1115	1205	1285	1353							
		Service Driers: Liquid/Charge Suction		30 cu in / 17oz 30 sq in									
		Ref. Charge (R-22 Oz.)		104									
		Clearances See Installation Instructions											
		Note: Optimum operating charge will produce 15° – 25° F suction line superheat at compressor with 82° F outdoor ambient and 80° F dry bulb (67° F wet bulb) indoor temperature at rated airflow.											1068227 3–15–95 AH–1

Parts List, Tech Labels & Wiring Diagrams for PAB & PAMC Series

3 Ton - 575 Volt

Model or Style No. PAB036N1S, PAMC36N		Performance Data: 80°F Dry Bulb Indoor																																																		
Specifications		Coil - Internal					Rated 1200 CFM					.20 ESP Wet.																																								
		Low Wet Bulb (63°F)					High Wet Bulb (69°F)																																													
		Ambient Outdoor °F	Approx. MBTUH	Sens. Total Ratio	PSIG. Liquid (Head)	PSIG. Suct.	Unit Amps	Ambient Outdoor °F	Approx. MBTUH	Sens. Total Ratio	PSIG. Liquid (Head)	PSIG. Suct.	Unit Amps																																							
Electrical: Voltage/Phase/Hz Branch Circuit Ampacity Time Delay Fuse Size Max. Fuse/HACR Brk. Boost Transformer	575-3-60 7.4 15 15 - - - -	65	34.7	0.88	171	65	4.3	65	38.0	0.62	185	75	4.6																																							
		75	34.0	0.90	192	69	4.6	75	37.2	0.64	207	79	4.9																																							
		85	33.4	0.92	218	73	4.9	85	36.5	0.66	235	83	5.2																																							
		95	32.7	0.94	248	76	5.2	95	35.6	0.67	268	87	5.5																																							
		105	31.0	0.95	278	79	5.5	105	33.9	0.68	301	90	5.8																																							
		115	28.4	0.95	307	82	5.8	115	31.0	0.68	332	94	6.1																																							
Fan Motor: H.P./Type FLA/LRA Speeds/CFM Cap. MFD/Volts	COND. EVAP. 3 / 4 PSC 1 / 2 PSC 1.2 / 3.6 1.6 / 2.9 1 / 3500 4 / 1665 10 / 440 7.5 / 370	Blower Performance Data (Add 0.05 In. W.C. for wet coil) CFM @ 575V - Dry Coil (No filter) <table border="1"> <thead> <tr> <th>TAP</th> <th>LOW</th> <th>MED L</th> <th>MED H</th> <th>HIGH</th> </tr> </thead> <tbody> <tr> <td>.10</td> <td>---</td> <td>---</td> <td>---</td> <td>1712</td> </tr> <tr> <td>.20</td> <td>---</td> <td>1430</td> <td>1558</td> <td>1665</td> </tr> <tr> <td>.30</td> <td>1235</td> <td>1408</td> <td>1522</td> <td>1617</td> </tr> <tr> <td>.40</td> <td>1173</td> <td>1375</td> <td>1480</td> <td>1566</td> </tr> <tr> <td>.50</td> <td>1158</td> <td>1332</td> <td>1428</td> <td>1507</td> </tr> <tr> <td>.60</td> <td>1152</td> <td>1275</td> <td>1365</td> <td>1437</td> </tr> <tr> <td>.70</td> <td>1115</td> <td>1205</td> <td>1285</td> <td>1353</td> </tr> </tbody> </table>											TAP	LOW	MED L	MED H	HIGH	.10	---	---	---	1712	.20	---	1430	1558	1665	.30	1235	1408	1522	1617	.40	1173	1375	1480	1566	.50	1158	1332	1428	1507	.60	1152	1275	1365	1437	.70	1115	1205	1285	1353
TAP	LOW												MED L	MED H	HIGH																																					
.10	---	---	---	1712																																																
.20	---	1430	1558	1665																																																
.30	1235	1408	1522	1617																																																
.40	1173	1375	1480	1566																																																
.50	1158	1332	1428	1507																																																
.60	1152	1275	1365	1437																																																
.70	1115	1205	1285	1353																																																
Compressor: FLA/LRA Run Cap. MFD./Volts Acc. Start Kit	COPELAND 3.7 / 27 - - - - - - - -																																																			
Service Driers: Liquid/Charge Suction	30 cu in / 17oz 30 sq in	External Static Pressure Inches of W. C.																																																		
Ref. Charge (R-22 Oz.)	104																																																			
Clearances See Installation Instructions																																																				

Note: Optimum operating charge will produce 15° - 25° F suction line superheat at compressor with 82° F outdoor ambient and 80° F dry bulb (67° F wet bulb) indoor temperature at rated airflow.

1068231
3-13-95
AH-1

4 Ton - 230 Volt

Style No. PAB048N1H / PAMC48H		Outdoor Ambient Temperature - Degrees F. Dry Bulb																											
		75				85				95				105				115											
		Entering Indoor Temperature - Degrees F. Wet Bulb																											
		59				63				67				71				75											
		IDB	59	63	67	71	59	63	67	71	59	63	67	71	59	63	67	71	59	63	67	71							
Voltage	208 / 230	70	MBh	41.8	43.3	47.5	-	40.8	42.3	46.4	-	39.8	41.3	45.2	-	37.8	39.2	43.0	-	35.0	36.3	39.8	-						
Phase	3		S/T	0.77	0.65	0.45	-	0.79	0.66	0.46	-	0.82	0.68	0.47	-	0.85	0.71	0.49	-	0.86	0.72	0.50	-						
Ampacity	24	75	AMPS	14.6	14.8	15.2	-	15.5	15.8	16.1	-	16.3	16.5	17.0	-	17.0	17.3	17.8	-	17.8	18.1	18.6	-						
Wire Ga/Ft	10 / 50		HI PR	191	206	217	-	217	234	247	-	248	266	281	-	278	300	316	-	308	331	350	-						
Delay Fuse	30	80	LO PR	61	65	71	-	63	68	74	-	67	71	77	-	70	74	81	-	72	77	84	-						
Max. Fuse	35		MBh	42.5	43.8	47.4	50.9	41.5	42.7	46.3	49.7	40.5	41.7	45.1	48.4	38.5	39.6	42.9	46.0	35.6	36.7	39.7	42.6						
Compressor	COPELAND	85	S/T	0.88	0.79	0.60	0.38	0.90	0.81	0.61	0.39	0.93	0.83	0.63	0.41	0.97	0.86	0.65	0.42	0.98	0.87	0.66	0.42						
RLA	13.11		AMPS	14.7	14.9	15.3	15.7	15.6	15.9	16.2	16.7	16.4	16.7	17.1	17.6	17.1	17.5	17.9	18.4	17.9	18.3	18.7	19.3						
LRA	91	85	HI PR	193	208	219	229	220	236	249	260	250	269	284	296	281	303	320	333	311	334	353	368						
Cap MFD/V	-		LO PR	62	66	72	76	64	68	74	79	67	72	78	83	71	75	82	87	73	78	85	90						
CC Heater	NONE	85	MBh	44.0	44.9	47.0	50.2	43.0	43.8	45.9	49.0	41.9	42.8	44.8	47.8	39.8	40.6	42.5	45.4	36.9	37.6	39.4	42.0						
Start Kit	NONE		S/T	1.00	0.98	0.88	0.72	1.00	1.00	0.90	0.73	1.00	1.00	0.93	0.76	1.00	1.00	0.97	0.79	1.00	1.00	0.98	0.79						
Cond & Evap	Cond Evap	85	AMPS	14.9	15.1	15.5	15.9	15.8	16.1	16.5	16.9	16.6	16.9	17.3	17.8	17.4	17.7	18.2	18.7	18.2	18.5	19.0	19.6						
Type	Fan Blower		HI PR	197	212	224	233	224	241	255	265	255	275	290	302	287	309	326	340	317	341	360	376						
Size	22 DD10-9	85	LO PR	63	67	73	78	65	70	76	81	69	73	80	85	72	77	84	89	74	79	86	92						
Motor-HP	1/2 1/2		Air Delivery in CFM - Dry Coil - No Filter (Add .05 static for Wet Coil)																										
Type	PSC PSC	230 Volt		External Static Press (Inch Water Column)								208 Volt								External Static Press (Inch Water Column)									
FLA	2.6 5	Operating Chg (No Lines)*		Speed Tap	0.1	0.2	0.3	0.4	0.5	0.6	0.7	Speed Tap	0.1	0.2	0.3	0.4	0.5	0.6	0.7										
LRA	9.52 8.75	(R-22 Oz)		230 Volt	126																								
RPM	1145 1125	85	HI	2184	2124	2062	1997	1928	1854	1773	HI	2015	1971	1918	1859	1794	1725	1652											
Cap MFD/V	10/440 15/370		MD HI	2039	1990	1936	1877	1814	1746	1672	MD HI	1811	1780	1741	1694	1641	1583	1519											
PTCR	NONE	85	MD LO	1638	1614	1584	1549	1507	1457	1398	MD LO	1378	1366	1349	1326	1296	1257	1207											
Hi Press	NONE		LO	1285	1277	1263	1242	1212	1174	1127	LO	1061	1052	1040	1023	1000	970	933											
Low Press	NONE																												
Service Driers																													
Liquid/Chg	30 Cu In / 17 oz																												
Suction	30 Sq In																												
Unit Weight																													

1082394

Parts List, Tech Labels & Wiring Diagrams for PAB & PAMC Series

4 Ton - 460 Volt

Style No:	PAB048N1L / PAMC48F		Outdoor Ambient Temperature - Degrees F. Dry Bulb																			
			75				85				95				105				115			
			Entering Indoor Temperature - Degrees F. Wet Bulb																			
IDB			59	63	67	71	59	63	67	71	59	63	67	71	59	63	67	71	59	63	67	71
Voltage	460																					
Phase	3																					
Ampacity	12.1																					
Wire Ga/Ft	12 / 62																					
Delay Fuse	15																					
Max. Fuse	15																					
Compressor	COPELAND																					
RLA	6.56																					
LRA	46																					
Cap MFD/V	-																					
CC Heater	-																					
Start Kit	NONE																					
Cond & Evap	Cond	Evap																				
Type	Fan	Blower																				
Size	22	DD10-9																				
Motor-HP	1/2	1/2																				
Type	PSC	PSC																				
FLA	1.4	5																				
LRA	5.04	8.75																				
RPM	1145	1125																				
Cap MFD/V	10/440	15/370																				
PTCR	NONE																					
Hi Press	NONE																					
Low Press	NONE																					
			Air Delivery in CFM - Dry Coil - No Filter (Add .05 static for Wet Coil)																			
Operating Chg (No Lines)*	(R-22 Oz)	126	230 Volt		External Static Press (Inch Water Column)																	
			Speed Tap	0.1	0.2	0.3	0.4	0.5	0.6	0.7												
Service Driers			HI	2184	2124	2062	1997	1928	1854	1773												
Liquid/Chg	30 Cu In / 17 oz		MD HI	2039	1990	1936	1877	1814	1746	1672	1082395											
Suction	30 Sq In		MD LO	1638	1614	1584	1549	1507	1457	1398												
Unit Weight			LO	1285	1277	1263	1242	1212	1174	1127												

4 Ton - 575 Volt

Style No:	PAB048N1S / PAMC48N		Outdoor Ambient Temperature - Degrees F. Dry Bulb																			
			75				85				95				105				115			
			Entering Indoor Temperature - Degrees F. Wet Bulb																			
IDB			59	63	67	71	59	63	67	71	59	63	67	71	59	63	67	71	59	63	67	71
Voltage	575																					
Phase	3																					
Ampacity	10.4																					
Wire Ga/Ft	12 / 62																					
Delay Fuse	15																					
Max. Fuse	15																					
Compressor	COPELAND																					
FLA	5.8																					
LRA	40																					
Cap MFD/V	-																					
CC Heater	-																					
Start Kit	NONE																					
Cond & Evap	Cond	Evap																				
Type	Fan	Blower																				
Size	22	DD11-11																				
Motor-HP	3/4	3/4																				
Type	PSC	PSC																				
FLA	1.2	2																				
LRA	3.6	3.5																				
RPM	1155	1125																				
Cap MFD/V	10/440	15/370																				
PTCR	NONE																					
Hi Press	NONE																					
Low Press	NONE																					
			Air Delivery in CFM - Dry Coil - No Filter (Add .05 static for Wet Coil)																			
Operating Chg (No Lines)*	(R-22 Oz)	126	230 Volt		External Static Press (Inch Water Column)																	
			Speed Tap	0.1	0.2	0.3	0.4	0.5	0.6	0.7												
Service Driers			HI	2184	2124	2062	1997	1928	1854	1773												
Liquid/Chg	30 Cu In / 17 oz		MD HI	2039	1990	1936	1877	1814	1746	1672	1097761											
Suction	30 Sq In		MD LO	1638	1614	1584	1549	1507	1457	1398												
Unit Weight			LO	1285	1277	1263	1242	1212	1174	1127												

Parts List, Tech Labels & Wiring Diagrams for PAB & PAMC Series

5 Ton - 230 Volt

Style No:	PAB060N1H / PAMC60H		Outdoor Ambient Temperature - Degrees F. Dry Bulb																			
Voltage	208 / 230		75				85				95				105				115			
Phase	3		Entering Indoor Temperature - Degrees F. Wet Bulb																			
Ampacity	34.2		59				63				67				71				75			
Wire Ga/Ft	8 / 60		59				63				67				71				75			
Delay Fuse	50		59				63				67				71				75			
Max. Fuse	40		59				63				67				71				75			
Compressor	COPELAND		IDB																			
RLA	21.28																					
LRA	128		70																			
Cap MFD/V	-																					
CC Heater	-		75																			
Start Kit	-																					
Cond & Evap	Cond	Evap	80																			
Type	Fan	Blower																				
Size	DD11-11		85																			
Motor-HP	3 / 4																					
Type	PSC	PSC	85																			
FLA	2.6																					
LRA	9.52		85																			
RPM	1145																					
Cap MFD/V	10/440	20/370	85																			
PTCR																						
Hi Press			85																			
Low Press																						
Operating Chg (No Lines)*	(R-22 Oz) 99		Air Delivery in CFM - Dry Coil - No Filter (Add .05 static for Wet Coil)																			
Service Driers	30 Cu In / 17 oz		230 Volt				External Static Press (Inch Water Column)				208 Volt				External Static Press (Inch Water Column)				1082391			
			Speed Tap	0.1	0.2	0.3	0.4	0.5	0.6	0.7	Speed Tap	0.1	0.2	0.3	0.4	0.5	0.6	0.7				
Liquid/Chg Suction	30 Sq In		HI				MD HI				MD LO				LO							
Unit Weight			LO				LO				LO				LO							

Parts List, Tech Labels & Wiring Diagrams for PAB & PAMC Series

5 Ton - 460 Volt

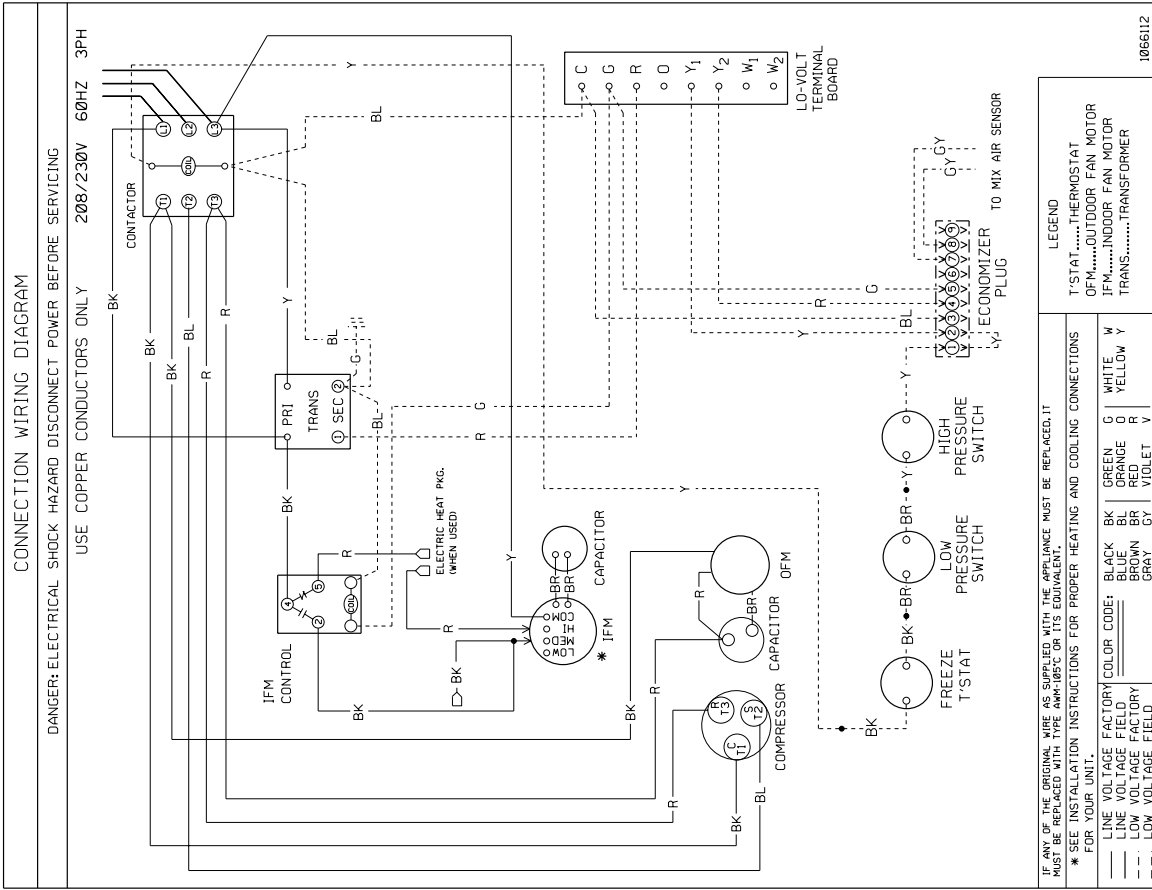
Style No:	PAB060N1L / PAMC60F			Outdoor Ambient Temperature - Degrees F. Dry Bulb																			
				75				85				95				105				115			
				Entering Indoor Temperature - Degrees F. Wet Bulb																			
IDB		59	63	67	71	59	63	67	71	59	63	67	71	59	63	67	71	59	63	67	71		
Voltage	460																						
Phase	3																						
Ampacity	15.3																						
Wire Ga/Ft	12 / 48																						
Delay Fuse	20																						
Max. Fuse	20																						
Compressor	COPELAND																						
RLA	9.12																						
LRA	63																						
Cap MFD/V	-																						
CC Heater	-																						
Start Kit	-																						
Cond & Evap	Cond	Evap																					
Type	Fan	Blower																					
Size	22	DD11-11																					
Motor-HP	3 / 4	1																					
Type	PSC	PSC																					
FLA	1.4	5																					
LRA	5.04	8.75																					
RPM	1145	1140																					
Cap MFD/V	10/440	20/370																					
PTCR																							
Hi Press																							
Low Press				Air Delivery in CFM - Dry Coil - No Filter (Add .05 static for Wet Coil)																			
Operating Chg (No Lines)*	(R-22 Oz) 99	230 Volt Speed Tap		External Static Press (Inch Water Column)																			
Service Driers				0.1	0.2	0.3	0.4	0.5	0.6	0.7													
Liquid/Chg	30 Cu In / 17 oz	MD HI		2184	2124	2062	1997	1928	1854	1773													
Suction	30 Sq In	MD LO		1638	1614	1584	1549	1507	1457	1398													
Unit Weight				LO	1285	1277	1263	1242	1212	1174	1127												

5 Ton - 575 Volt

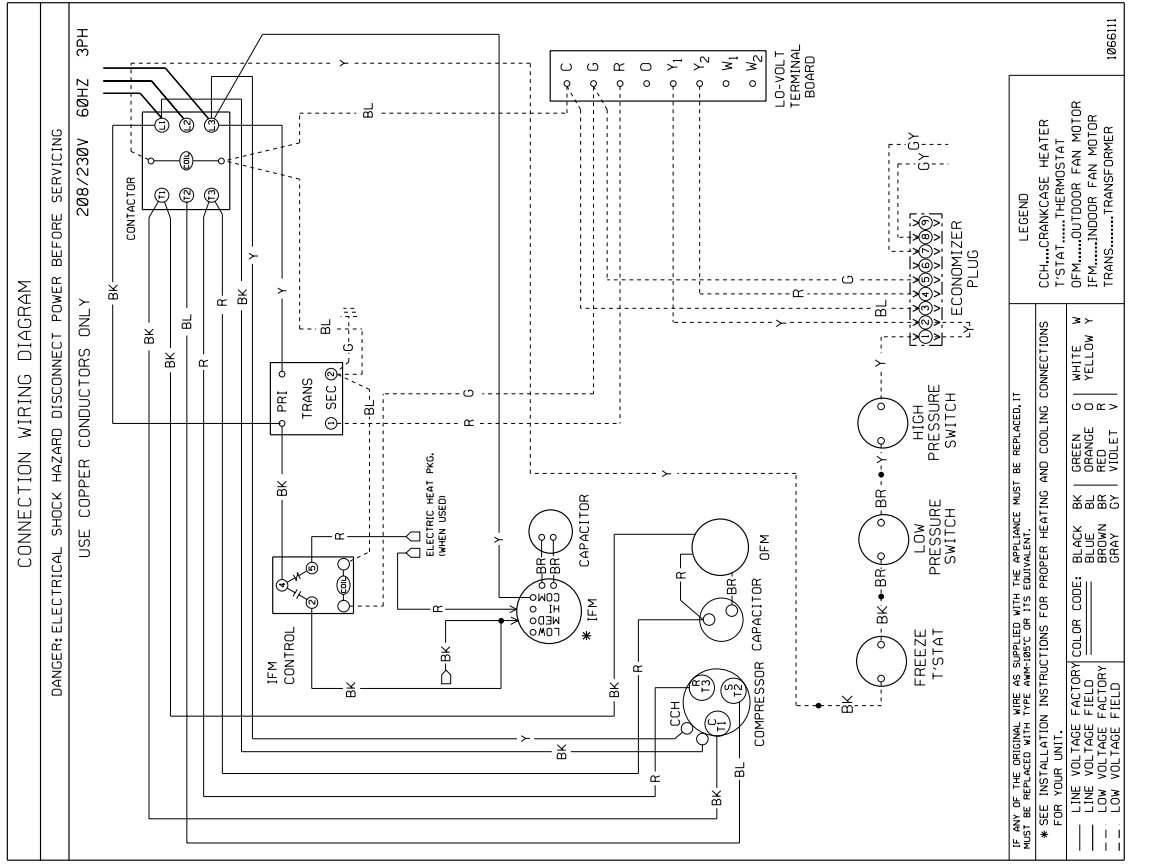
Style No:	PAB060N1S / PAMC60N			Outdoor Ambient Temperature - Degrees F. Dry Bulb																			
				75				85				95				105				115			
				Entering Indoor Temperature - Degrees F. Wet Bulb																			
IDB		59	63	67	71	59	63	67	71	59	63	67	71	59	63	67	71	59	63	67	71		
Voltage	575																						
Phase	3																						
Ampacity	13.9																						
Wire Ga/Ft	12 / 61																						
Delay Fuse	15																						
Max. Fuse	20																						
Compressor	COPELAND																						
RLA	8.55																						
LRA	49																						
Cap MFD/V	-																						
CC Heater	-																						
Start Kit	-																						
Cond & Evap	Cond	Evap																					
Type	Fan	Blower																					
Size	22	DD11-11																					
Motor-HP	3 / 4	1																					
Type	PSC	PSC																					
FLA	1.02	5																					
LRA	3.9	8.75																					
RPM	1145	1140																					
Cap MFD/V	10/440	20/370																					
PTCR																							
Hi Press																							
Low Press				Air Delivery in CFM - Dry Coil - No Filter (Add .05 static for Wet Coil)																			
Operating Chg (No Lines)*	(R-22 Oz) 99	230 Volt Speed Tap		External Static Press (Inch Water Column)																			
Service Driers				0.1	0.2	0.3	0.4	0.5	0.6	0.7													
Liquid/Chg	30 Cu In / 17 oz	MD HI		2184	2124	2062	1997	1928	1854	1773													
Suction	30 Sq In	MD LO		1638	1614	1584	1549	1507	1457	1398													
Unit Weight				LO	1285	1277	1263	1242	1212	1174	1127												

Parts List, Tech Labels & Wiring Diagrams for PAB & PAMC Series 230 Volt

4 & 5 Ton Models



3 Ton Models

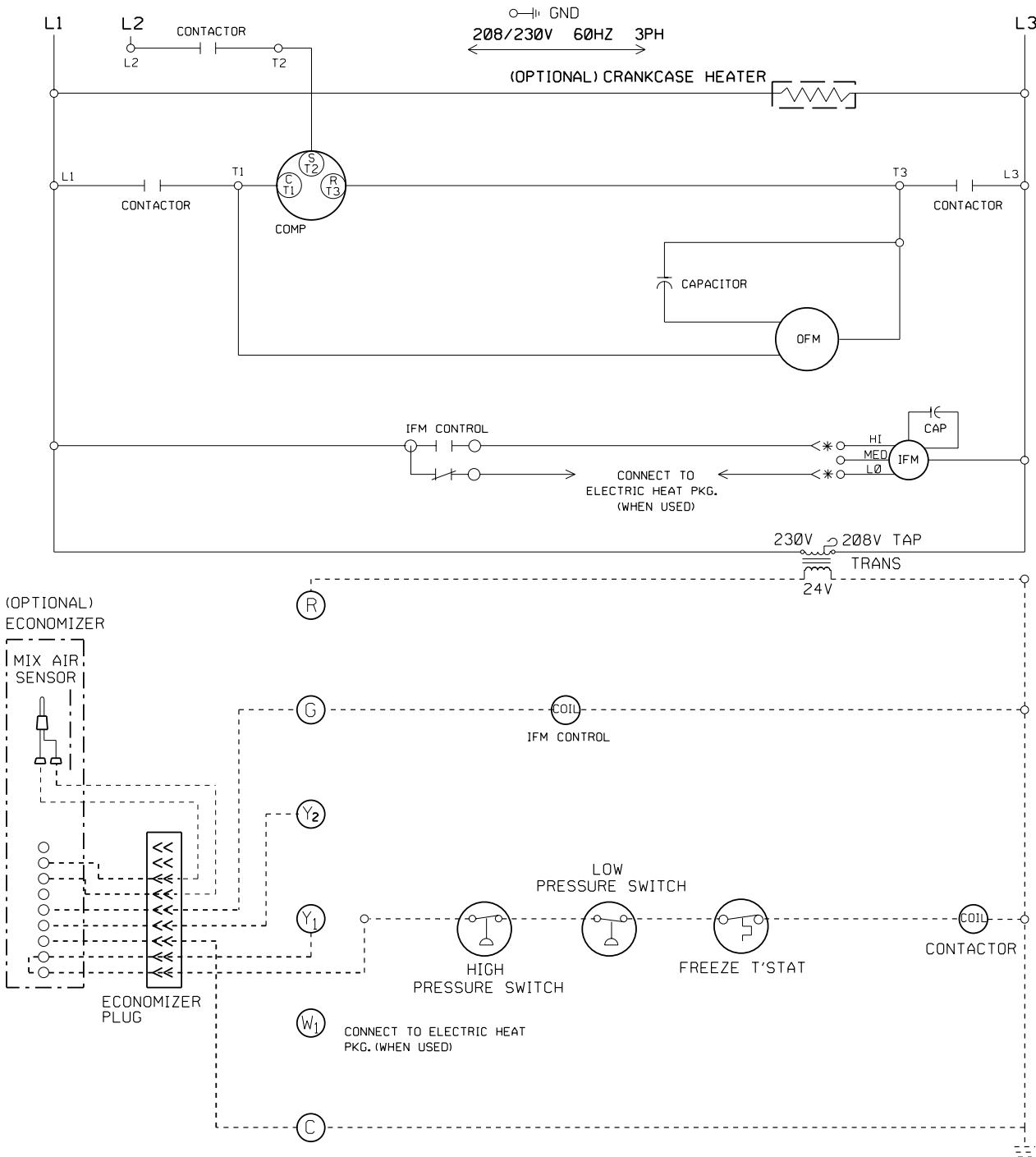


Parts List, Tech Labels & Wiring Diagrams for PAB & PAMC Series

**LADDER WIRING DIAGRAM:
ALL MODELS
230 Volt**

LADDER WIRING DIAGRAM

DANGER: ELECTRICAL SHOCK HAZARD DISCONNECT POWER BEFORE SERVICING



* SEE INSTALLATION INSTRUCTIONS FOR PROPER HEATING AND COOLING CONNECTIONS FOR YOUR UNIT.

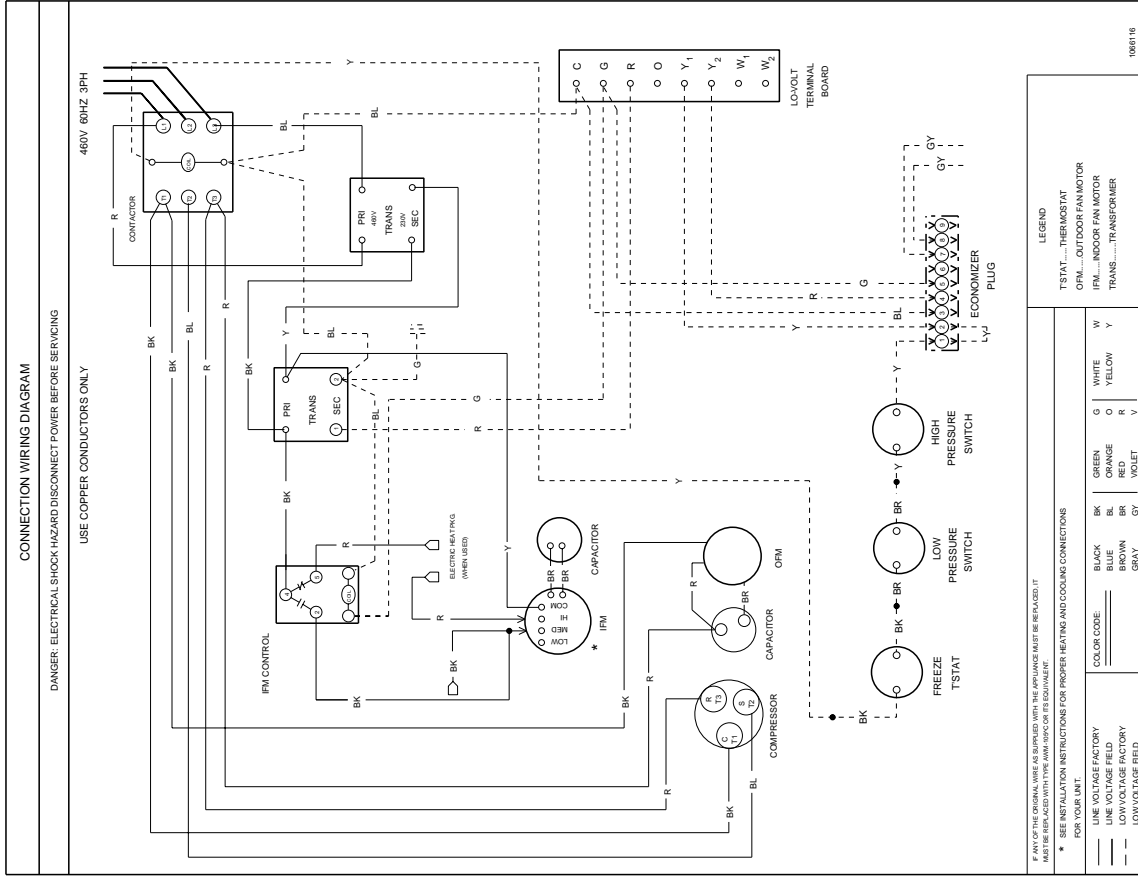
LEGEND

- | | |
|---------------------------|-----------------------|
| COMP.....COMPRESSOR | GND.....GROUND |
| CAP.....CAPACITOR | TRANS..TRANSFORMER |
| OFM.....OUTDOOR FAN MOTOR | T'STAT.....THERMOSTAT |
| IFM.....INDOOR FAN MOTOR | |

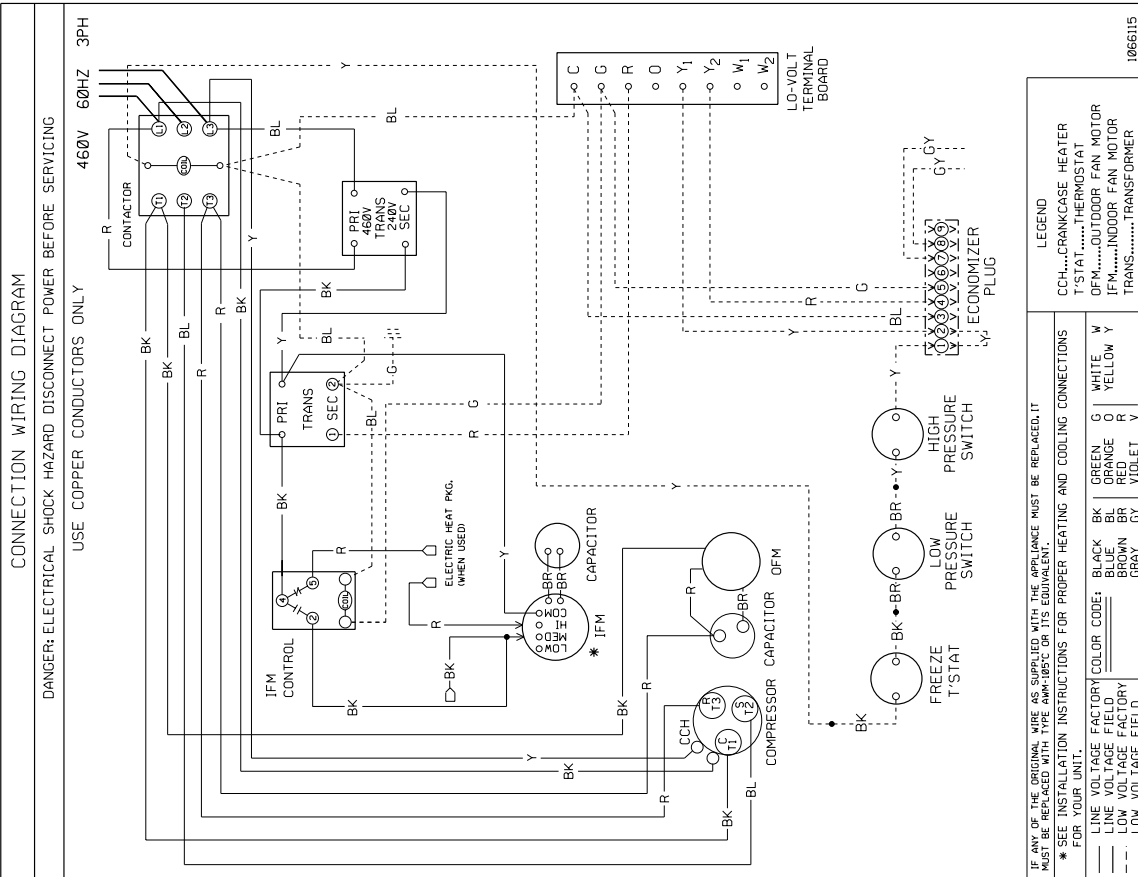
1066189

Parts List, Tech Labels & Wiring Diagrams for PAB & PAMC Series 460 Volt

4 & 5 Ton Models



3 Ton Models

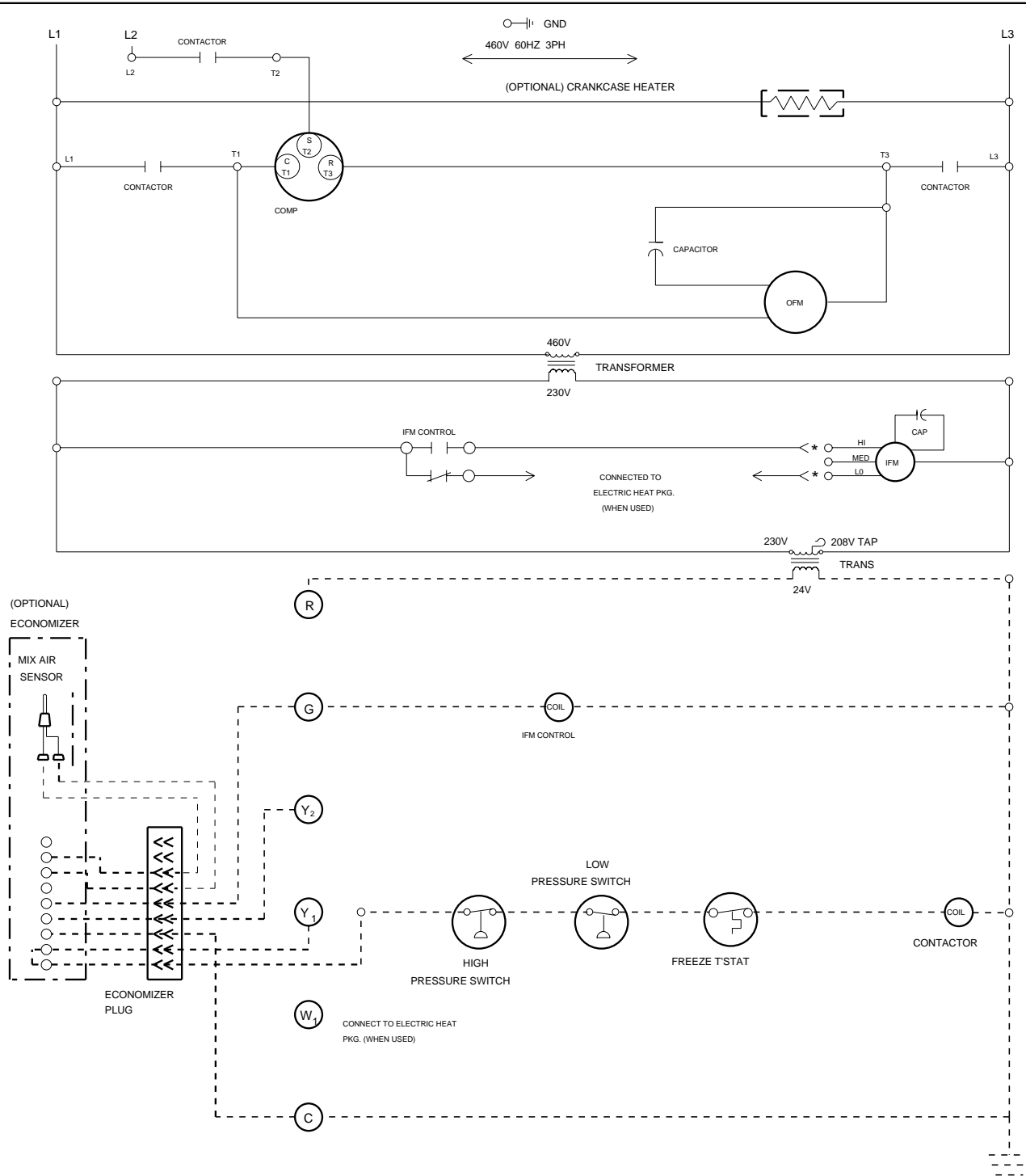


Parts List, Tech Labels & Wiring Diagrams for PAB & PAMC Series

LADDER WIRING DIAGRAM: ALL MODELS 460 Volt

LADDER WIRING DIAGRAM

⚠ DANGER: ELECTRICAL SHOCK HAZARD DISCONNECT POWER BEFORE SERVICING



* SEE INSTALLATION INSTRUCTIONS FOR PROPER HEATING AND COOLING CONNECTIONS FOR YOUR UNIT.

LEGEND

- | | |
|---------------------------|-----------------------|
| COMP.....COMPRESSOR | GND.....GROUND |
| CAP.....CAPACITOR | TRANS..TRANSFORMER |
| OFM.....OUTDOOR FAN MOTOR | T'STAT.....THERMOSTAT |
| IFM.....INDOOR FAN MOTOR | |

1066190

Parts List, Tech Labels & Wiring Diagrams for PAB & PAMC Series

CONNECTION WIRING DIAGRAM

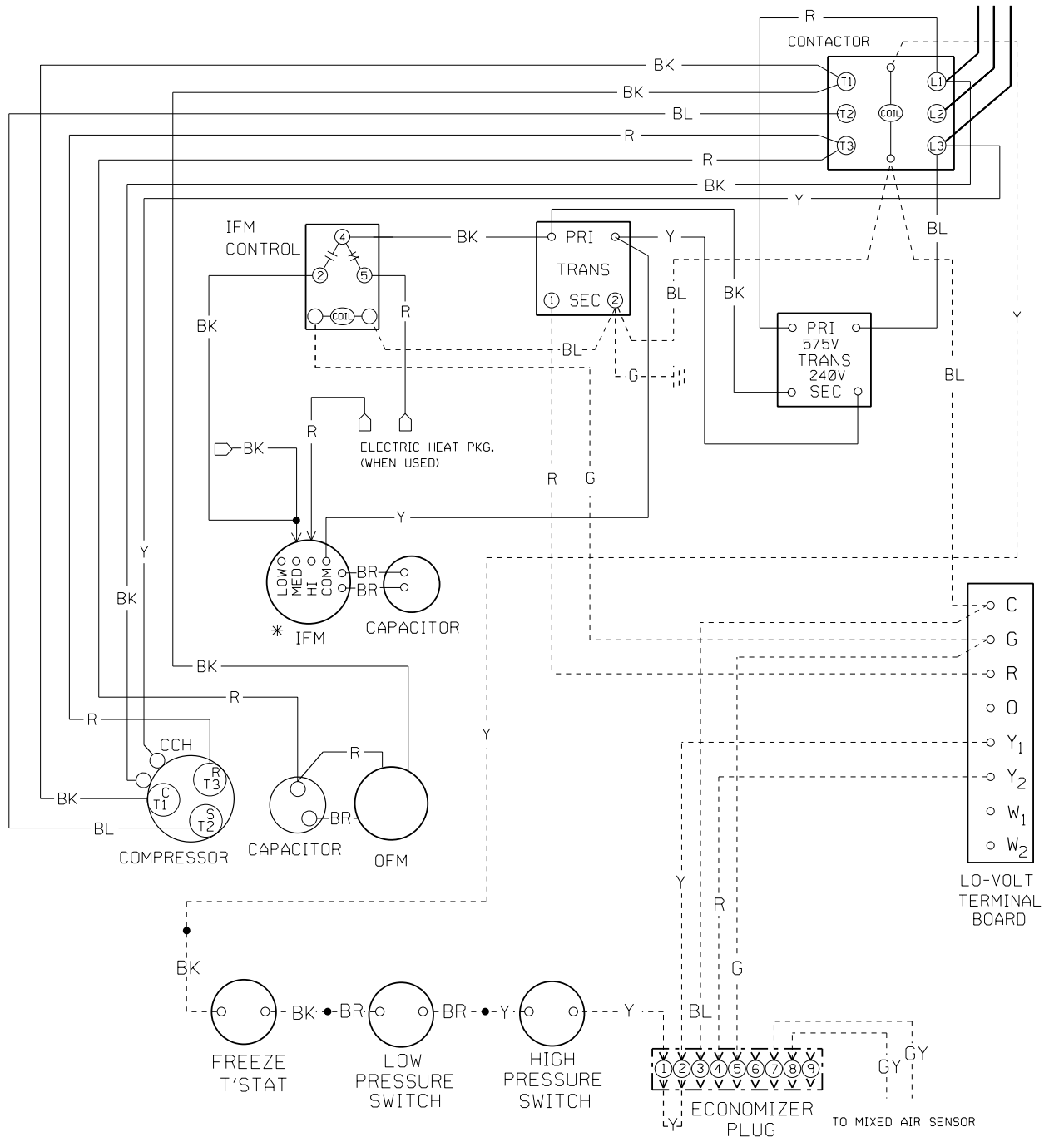
3 TON - 575V

CONNECTION WIRING DIAGRAM

DANGER: ELECTRICAL SHOCK HAZARD DISCONNECT POWER BEFORE SERVICING

USE COPPER CONDUCTORS ONLY

575V 60HZ 3PH



IF ANY OF THE ORIGINAL WIRE AS SUPPLIED WITH THE APPLIANCE MUST BE REPLACED, IT MUST BE REPLACED WITH TYPE AWM-105°C OR ITS EQUIVALENT.

* SEE INSTALLATION INSTRUCTIONS FOR PROPER HEATING AND COOLING CONNECTIONS FOR YOUR UNIT.

— LINE VOLTAGE FACTORY
 - - - LINE VOLTAGE FIELD
 - - - LOW VOLTAGE FACTORY
 - - - LOW VOLTAGE FIELD

COLOR CODE:

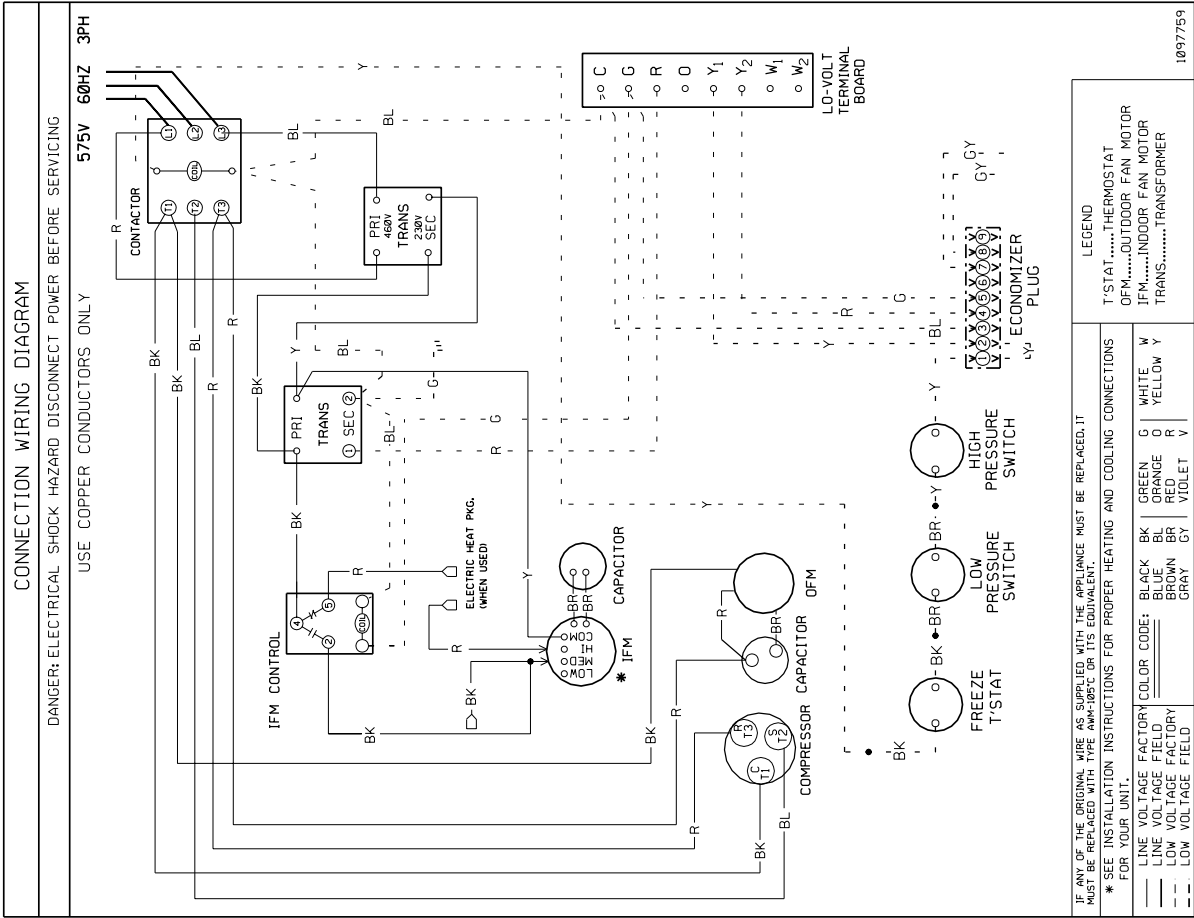
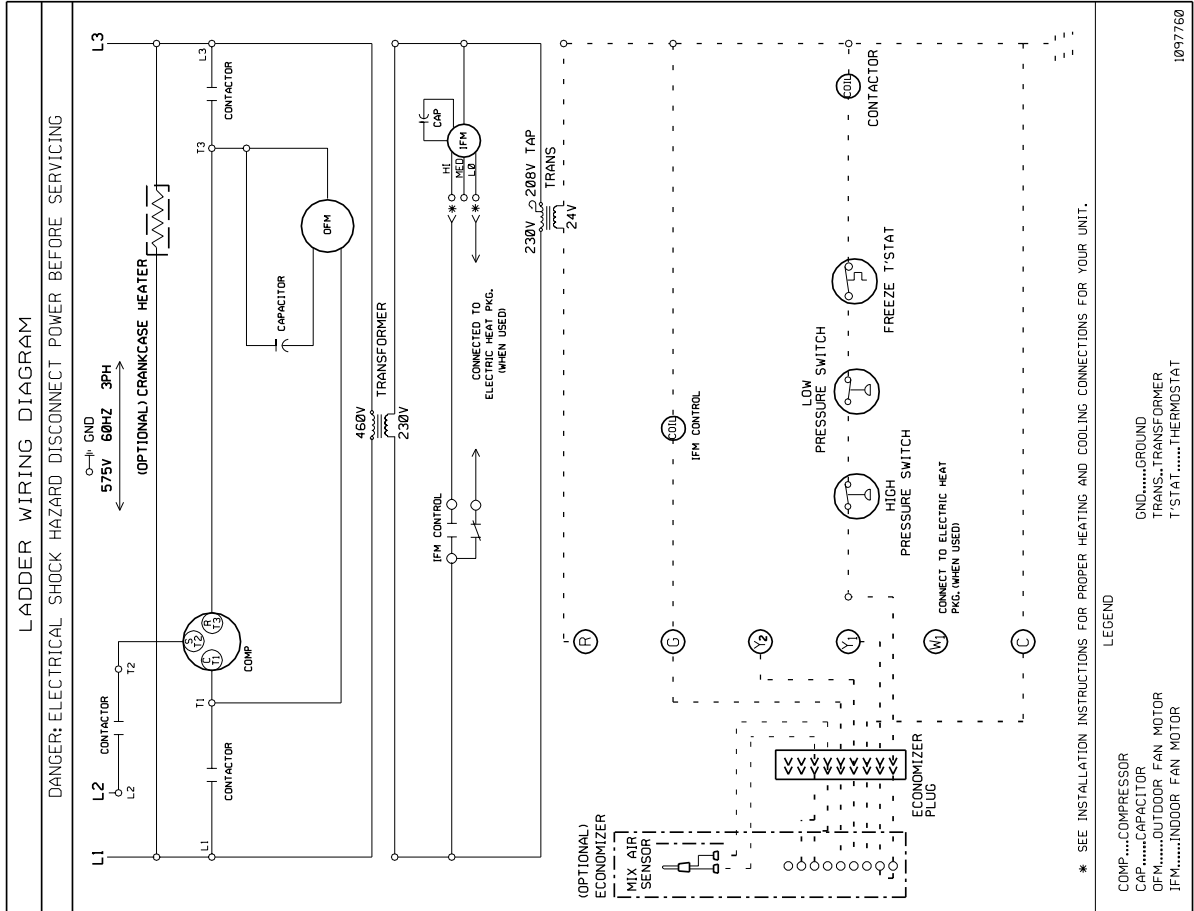
BLACK BK	GREEN G	WHITE W
BLUE BL	ORANGE O	YELLOW Y
BROWN BR	RED R	
GRAY GY	VIOLET V	

LEGEND

CCH.....CRANKCASE HEATER
 T'STAT.....THERMOSTAT
 OFM.....OUTDOOR FAN MOTOR
 IFM.....INDOOR FAN MOTOR
 TRANS.....TRANSFORMER

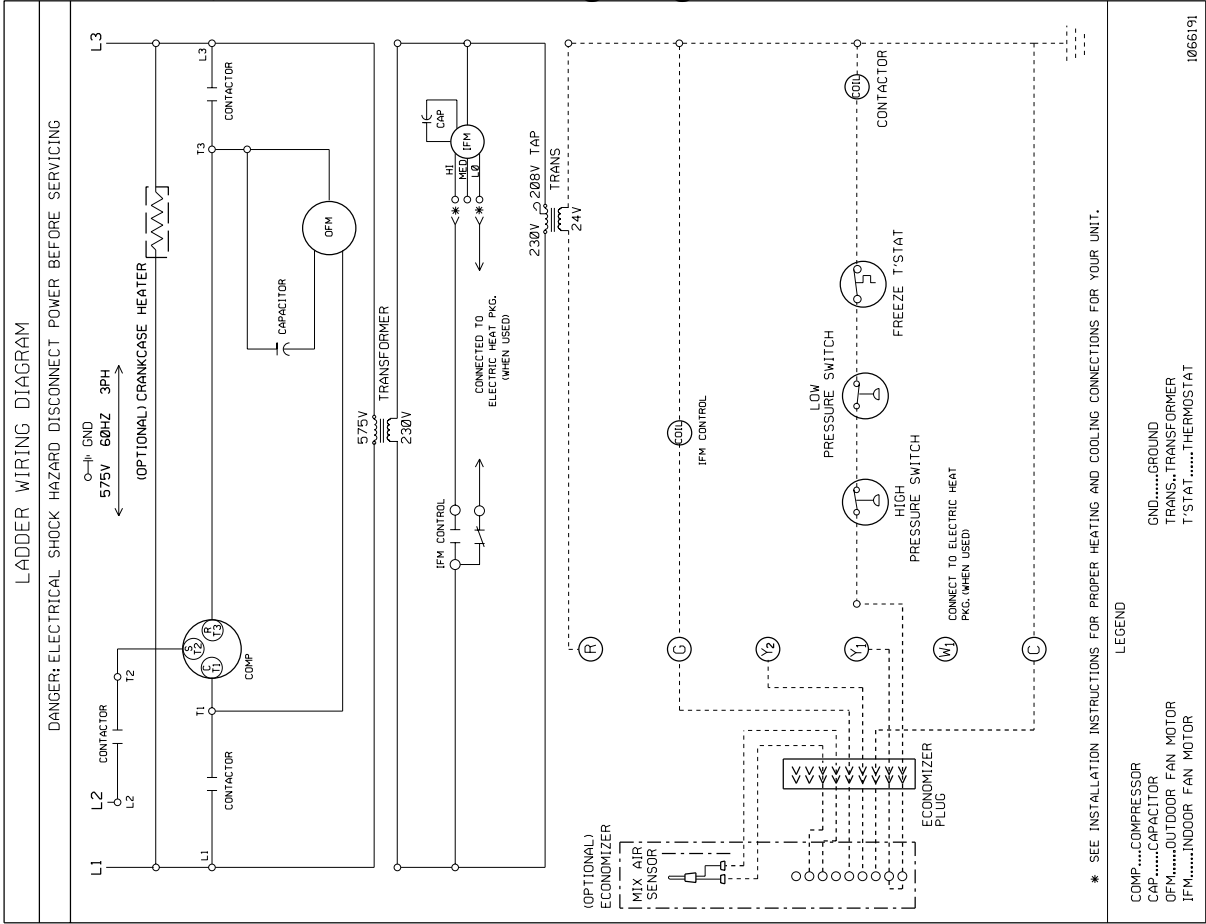
1066117

4 Ton - 575 Volt



Parts List, Tech Labels & Wiring Diagrams for PAB & PAMC Series

3 & 5 TON - 575 VOLT



5 TON - 575 VOLT

