

PARTS MANUAL

Gas Furnace

F9MAC, G9MAC

Safety Labeling and Signal Words

DANGER, WARNING, CAUTION, and NOTE

The signal words **DANGER, WARNING, CAUTION,** and **NOTE** are used to identify levels of hazard seriousness. The signal word **DANGER** is only used on product labels to signify an immediate hazard. The signal words **WARNING, CAUTION,** and **NOTE** will be used on product labels and throughout this manual and other manuals that may apply to the product.

DANGER – Immediate hazards which **will** result in severe personal injury or death.

WARNING – Hazards or unsafe practices which **could** result in severe personal injury or death.

CAUTION – Hazards or unsafe practices which **may** result in minor personal injury or product or property damage.

NOTE – Used to highlight suggestions which **will** result in enhanced installation, reliability, or operation.

Signal Words in Manuals

The signal word **WARNING** is used throughout this manual in the following manner:



The signal word **CAUTION** is used throughout this manual in the following manner:



Signal Words on Product Labeling

Signal words are used in combination with colors and/or pictures on product labels.

TABLE OF CONTENTS

Model Number Identification	2
Parts Diagram	3
Parts	8

MODELS

A1 Series

F9MAC0601714A1	G9MAC0601714A1
F9MAC0801714A1	G9MAC0801714A1
F9MAC1002120A1	G9MAC1002120A1
F9MAC1202422A1	G9MAC1202422A1

A2 Series

F9MAC0602120A2	G9MAC0602120A2
F9MAC0802120A2	G9MAC0802120A2
F9MAC1002122A2	G9MAC1002122A2

ELECTRICAL SHOCK HAZARD

Failure to turn off electric power could result in personal injury or death.

Before installing or servicing system, turn off main power to the system. There may be more than one disconnect switch, including accessory heater(s).

MODEL NUMBER IDENTIFICATION GUIDE

DIGIT POSITION	1	2	3	4	5	6,7,8	9,10	11,12	13	14
(F/G) = Mainline N = Entry	*	9	M	A	C	060	17	14	A	1
9 = 90+% AFUE	EFFICIENCY		POSITION							
M = Multiposition										
A = Modulating ECM Variable Speed Blower V = ECM Variable Speed X = ECM Blower S = Single-stage T = Two-stage						TYPE				
C = Communicating E = Extra AFUE Efficiency T = Two-Stage						FEATURE				
040 = 40,000 BTU/hr 060 = 60,000 BTU/hr 080 = 80,000 BTU/hr 100 = 100,000 BTU/hr 120 = 120,000 BTU/hr						HEAT INPUT				
14 = 14-3/16" 17 = 17-1/2" 21 = 21" 24 = 24-1/2"						CABINET WIDTH				
08 = 800 CFM 12 = 1200 CFM 14 = 1400 CFM 16 = 1600 CFM 20 = 2000 CFM 22 = 2200 CFM						NOMINAL MAXIMUM COOLING AIRFLOW @ .5 IN. W.C.				
SALES (MAJOR) REVISION DIGIT										
ENGINEERING (MINOR) REVISION DIGIT										

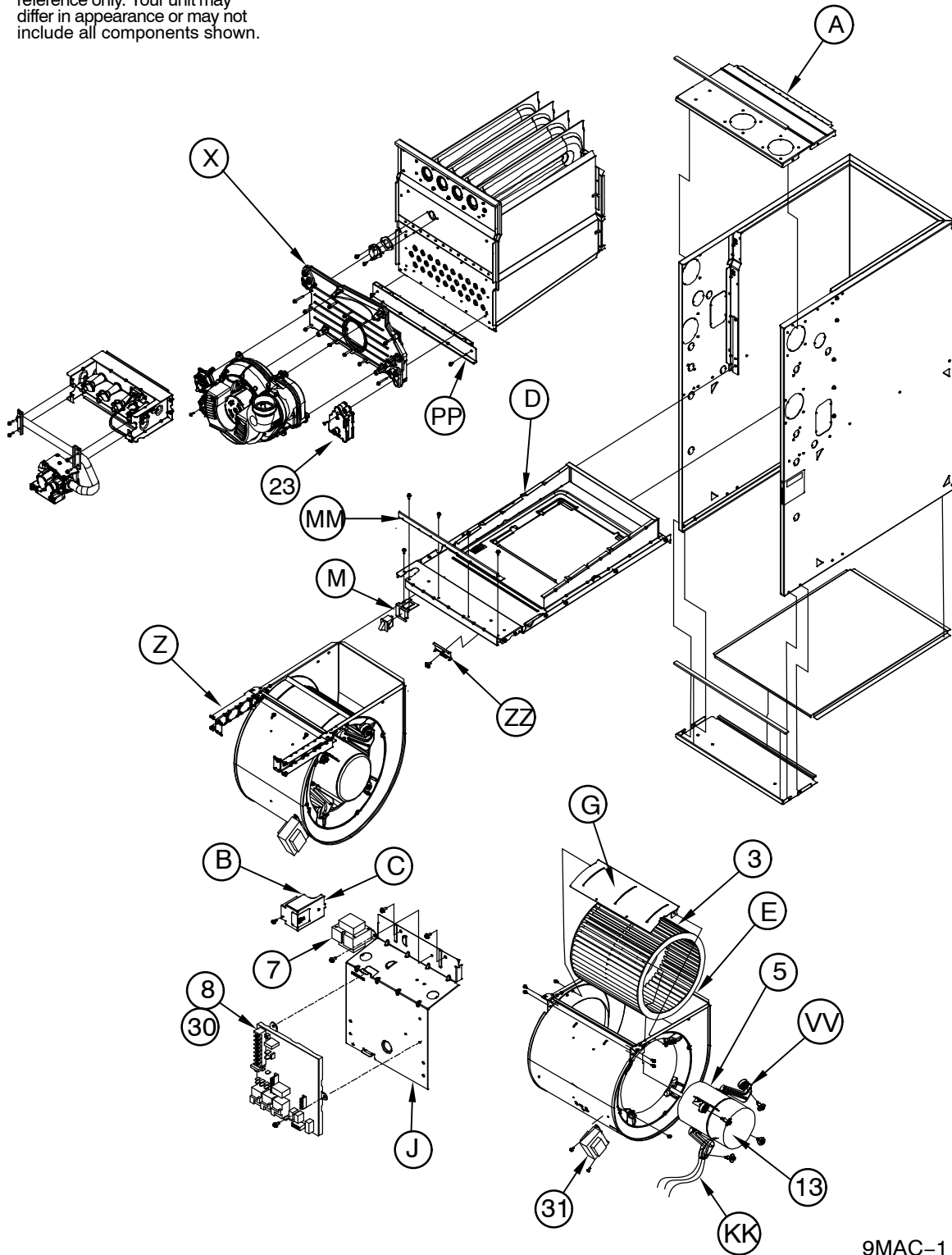
ECM—Electronically Commutated Motor

ACCESSORIES PART NUMBER IDENTIFICATION GUIDE

DIGIT POSITION	1	2	3	4	5, 6, 7	8, 9	10, 11
N = Non-Branded	N	A	H	A	001	01	DH
A = Accessory	BRANDING		PRODUCT GROUP				
H = Heating				KIT USAGE			
A = Original B = 2nd Generation				MAJOR SERIES			
Product Identifier Number							
Package Quantity							
Type of Kit (Example: DH = Draft Hood - Chimney Adapter)							

PARTS DIAGRAM

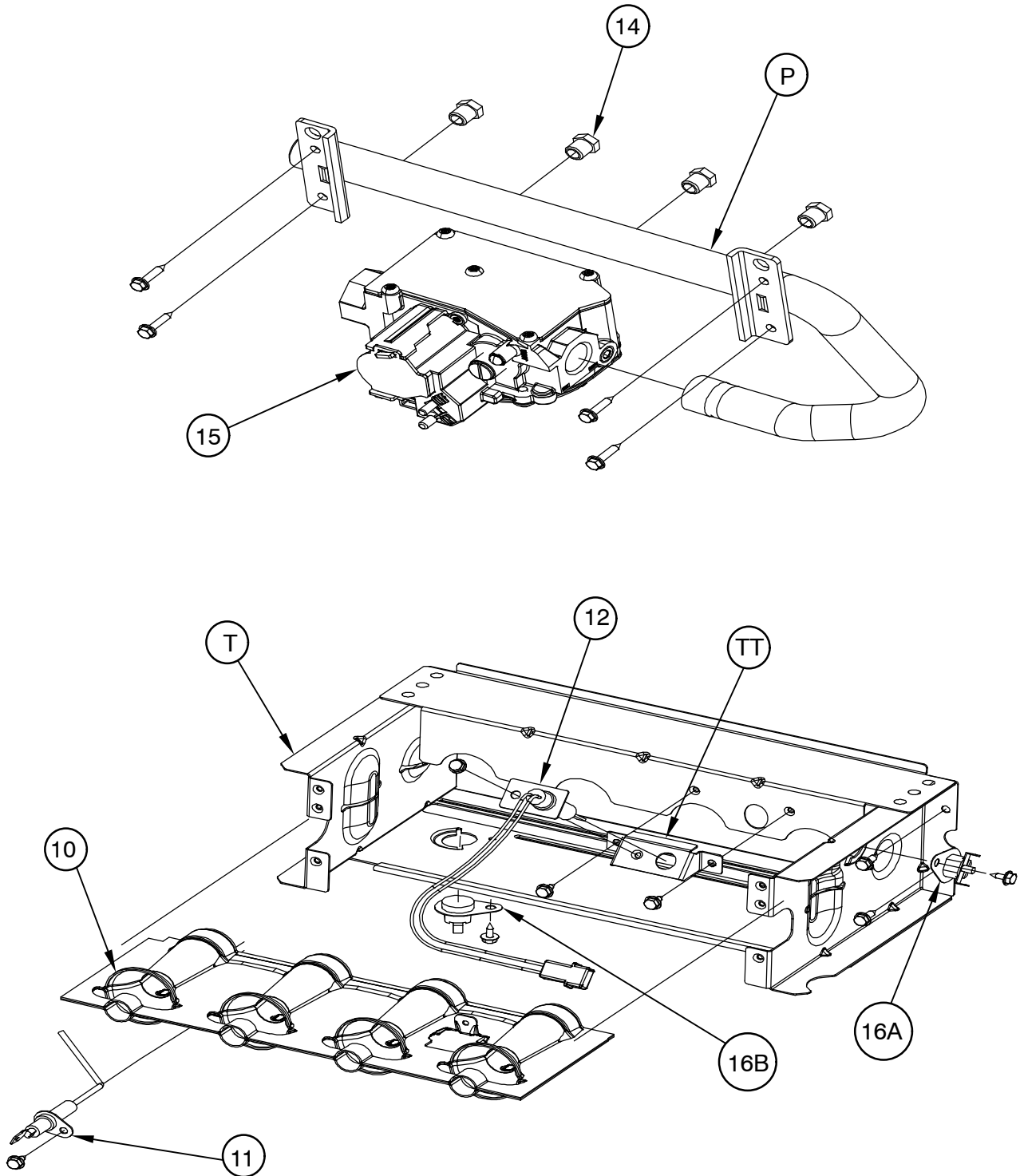
NOTE: This illustration is for reference only. Your unit may differ in appearance or may not include all components shown.



9MAC-1

PARTS DIAGRAM

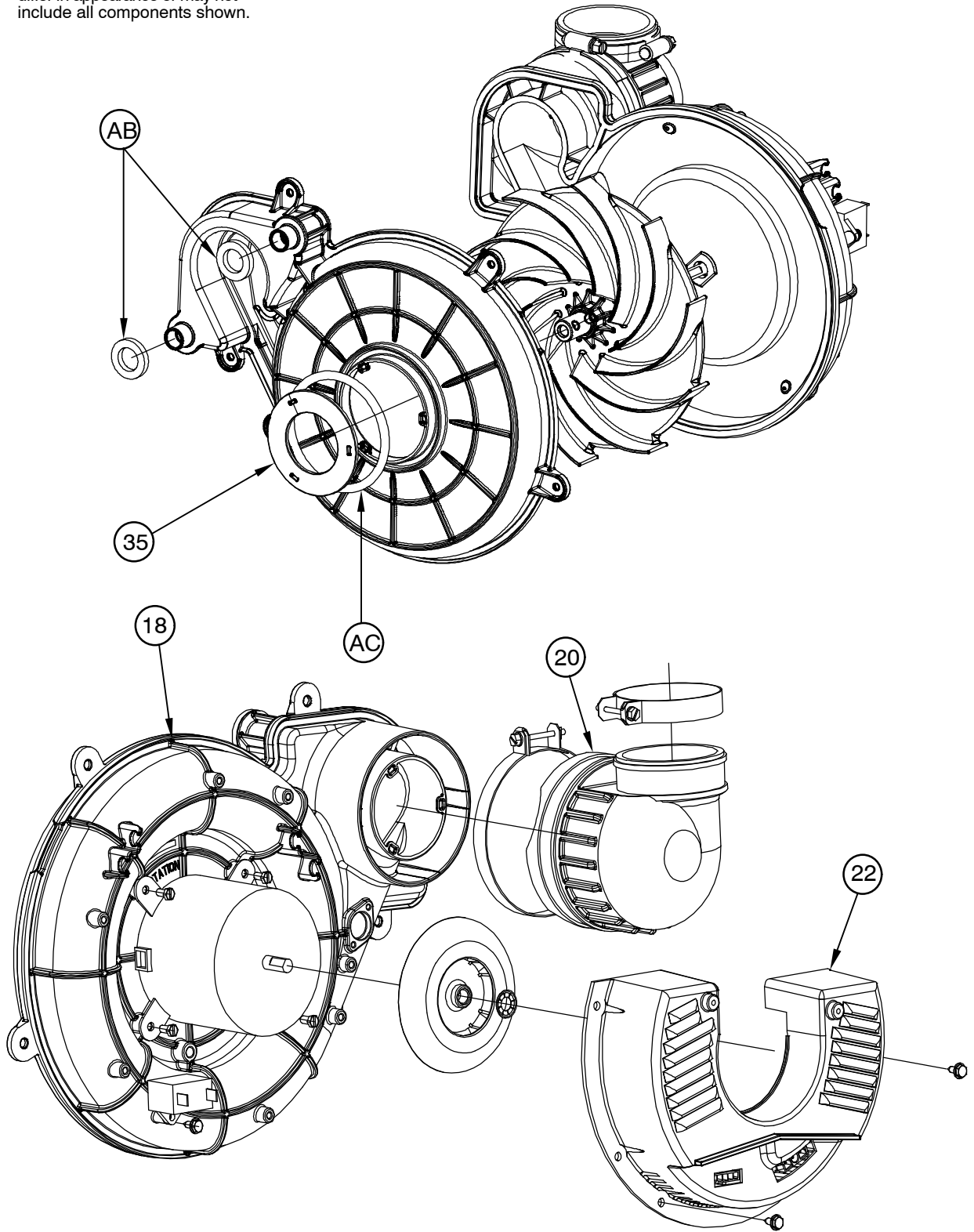
NOTE: This illustration is for reference only. Your unit may differ in appearance or may not include all components shown.



9MAC-2

PARTS DIAGRAM

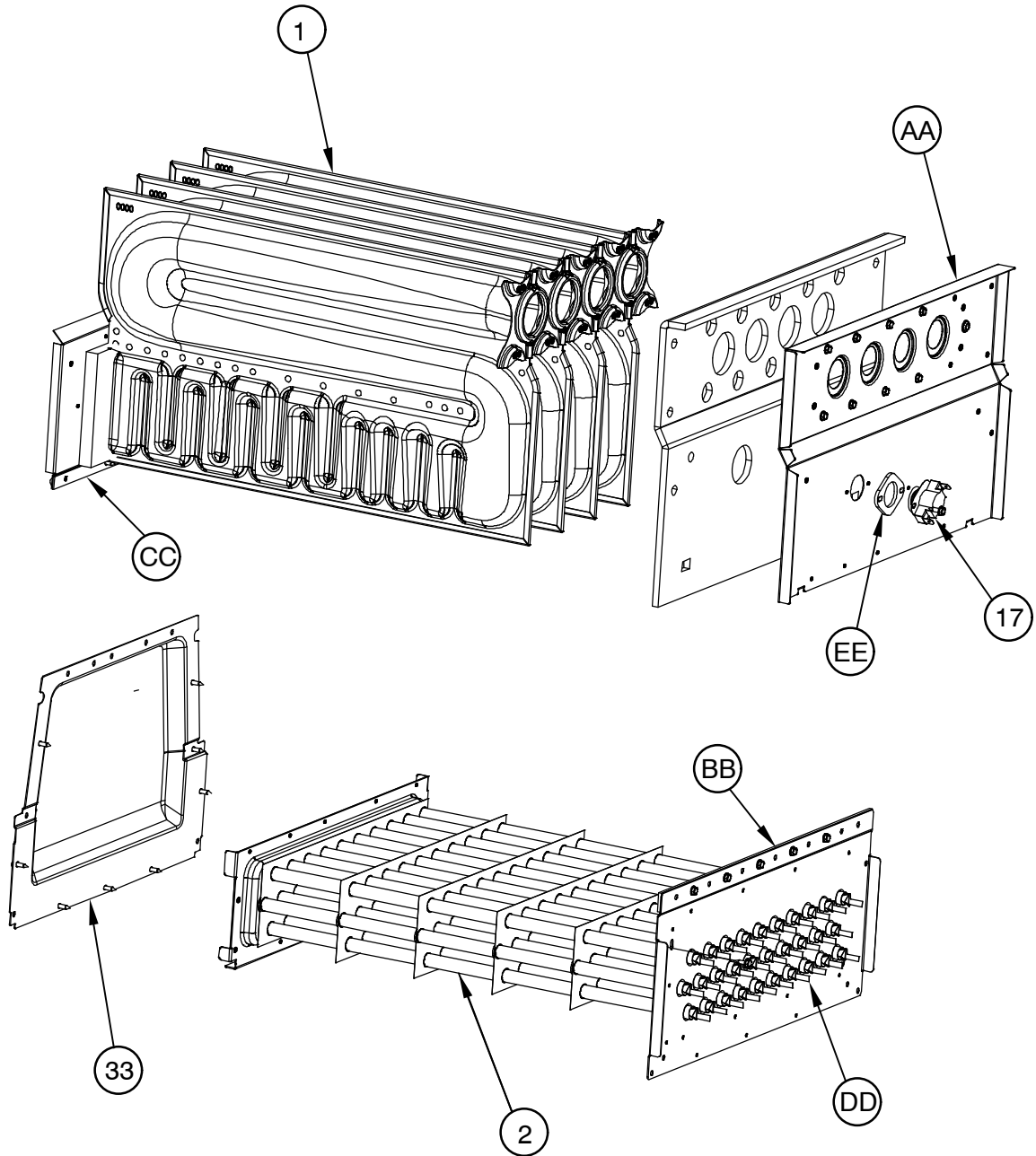
NOTE: This illustration is for reference only. Your unit may differ in appearance or may not include all components shown.



9MAC-3

PARTS DIAGRAM

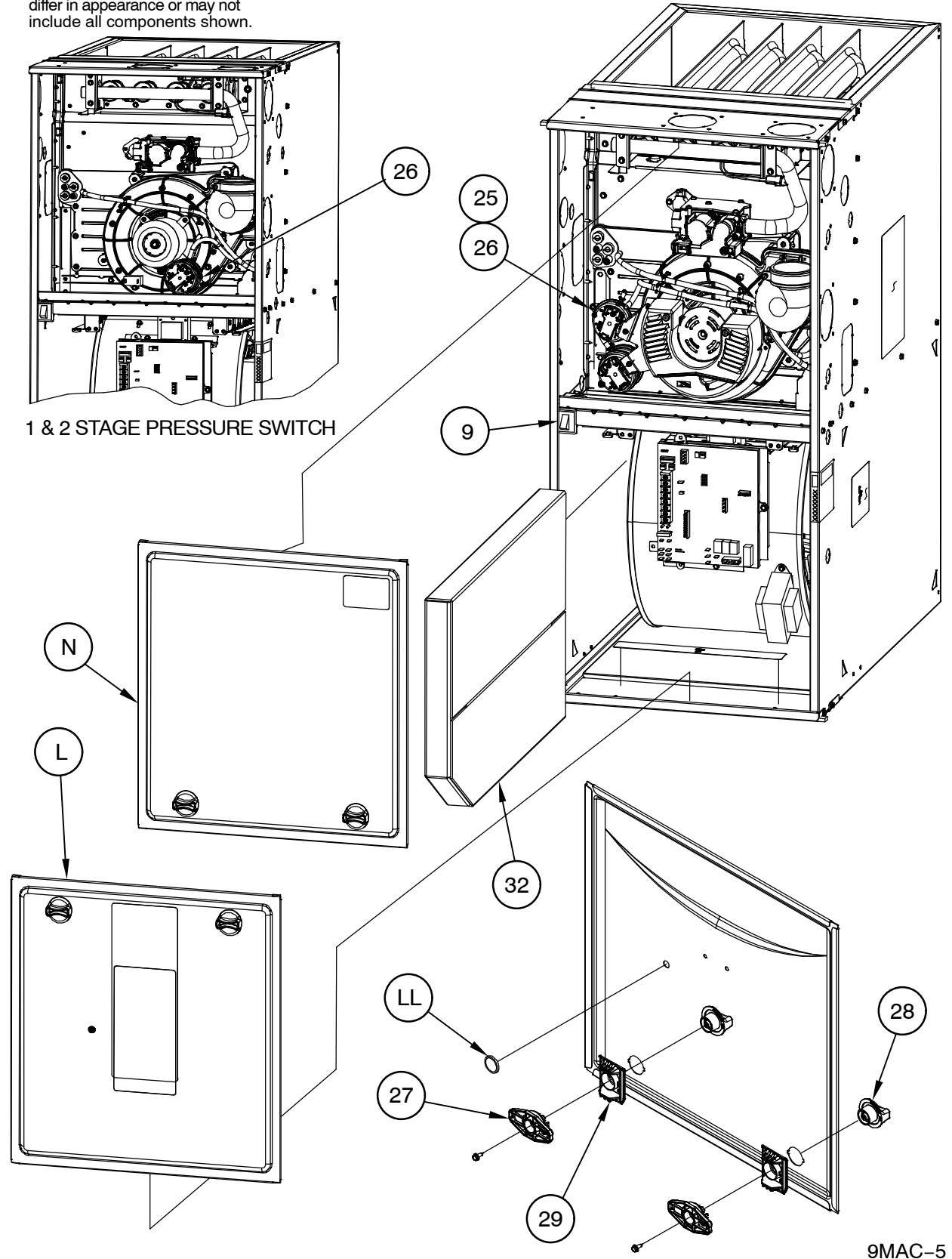
NOTE: This illustration is for reference only. Your unit may differ in appearance or may not include all components shown.



9MAC-4

PARTS DIAGRAM

NOTE: This illustration is for reference only. Your unit may differ in appearance or may not include all components shown.



PARTS LIST

KEY NO.	DESCRIPTION	FAST PARTS NO.	F9MAC0601714A1	F9MAC0801714A1	F9MAC1002120A1	F9MAC1202422A1	G9MAC0601714A1	G9MAC0801714A1	G9MAC1002120A1	G9MAC1202422A1	F9MAC0602120A2	F9MAC0802120A2	F9MAC1002122A2	G9MAC0602120A2	G9MAC0802120A2	G9MAC1002122A2
01	HT EX PRIM 3 CELL SSTL	1184497	1	-	-	-	1	-	-	-	-	-	-	-	-	-
01	HT EX PRIM 4 CELL SSTL	1184498	-	1	-	-	-	1	-	-	-	-	-	-	-	-
01	HT EX PRIM 4 CELL SSTL	1184498	-	-	-	-	-	-	-	-	-	1	-	-	1	-
01	HT EX PRIM 5 CELL SSTL	1184499	-	-	1	-	-	-	1	-	-	-	-	-	-	-
01	HT EX PRIM 5 CELL SSTL	1184499	-	-	-	-	-	-	-	-	-	-	1	-	-	1
01	HT EX PRIM 6 CELL SSTL	1184500	-	-	-	1	-	-	-	1	-	-	-	-	-	-
01	HT EX PRIM 3 CELL SSTL	1184883	-	-	-	-	-	-	-	-	1	-	-	1	-	-
02	HT EX SEC	1184501	1	1	-	-	1	1	-	-	-	-	-	-	-	-
02	HT EX SEC	1184502	-	-	1	-	-	-	1	-	-	-	-	-	-	-
02	HT EX SEC	1184502	-	-	-	-	-	-	-	-	1	-	1	1	-	1
02	HT EX SEC	1184503	-	-	-	1	-	-	-	1	-	-	-	-	-	-
02	HT EX SEC	1184819	-	-	-	-	-	-	-	-	-	1	-	-	1	-
03	WHEEL DD11x10x1/2 CW CV	1172129	-	-	1	-	-	-	1	-	-	-	-	-	-	-
03	WHEEL DD11x10x1/2 CW CV	1172129	-	-	-	-	-	-	-	-	1	1	1	1	1	1
03	WHEEL BLOWER 11 X 11	1176937	-	-	-	1	-	-	-	1	-	-	-	-	-	-
03	WHEEL BLOWER 11 X 8	1177180	1	1	-	-	1	1	-	-	-	-	-	-	-	-
05	MTR BLR 1/2 HP VAR SPD	1183469	1	1	-	-	1	1	-	-	-	-	-	-	-	-
05	MTR BLR 1 HP VAR SPD	1183470	-	-	1	-	-	-	1	-	-	-	-	-	-	-
05	MTR BLR 1 HP VAR SPD	1183470	-	-	-	-	-	-	-	-	1	1	1	1	1	1
05	MTR BLR 1 HP VAR SPD	1183470	-	-	-	1	-	-	-	1	-	-	-	-	-	-
07	TRANSFORMER ASY	1177217	1	1	1	-	1	1	1	-	-	-	-	-	-	-
07	TRANSFORMER ASY	1177217	-	-	-	-	-	-	-	-	1	1	1	1	1	1
07	TRANSFORMER ASY	1177217	-	-	-	1	-	-	-	1	-	-	-	-	-	-
08	CONTROL BOARD	1184327	1	1	1	-	1	1	1	-	-	-	-	-	-	-
08	CONTROL BOARD	1184327	-	-	-	1	-	-	-	1	-	-	-	-	-	-
08	BOARD CONTROL	1184837	-	-	-	-	-	-	-	-	1	1	1	1	1	1
09	SWITCH DOOR S	1171981	1	1	1	-	1	1	1	-	-	-	-	-	-	-
09	SWITCH DOOR S	1171981	-	-	-	-	-	-	-	-	1	1	1	1	1	1
09	SWITCH DOOR S	1171981	-	-	-	1	-	-	-	1	-	-	-	-	-	-
10	BURNER ASY	1184318	1	-	-	-	1	-	-	-	-	-	-	-	-	-
10	BURNER ASY	1184318	-	-	-	-	-	-	-	-	1	-	-	1	-	-
10	BURNER ASY	1184319	-	1	-	-	-	1	-	-	-	-	-	-	-	-
10	BURNER ASY	1184319	-	-	-	-	-	-	-	-	-	1	-	-	1	-
10	BURNER ASY	1184320	-	-	1	-	-	-	1	-	-	-	-	-	-	-
10	BURNER ASY	1184320	-	-	-	-	-	-	-	-	-	-	1	-	-	1
10	BURNER ASY	1184321	-	-	-	1	-	-	-	1	-	-	-	-	-	-
11	SENSOR FLAME	1184322	1	1	1	-	1	1	1	-	-	-	-	-	-	-
11	SENSOR FLAME	1184322	-	-	-	-	-	-	-	-	1	1	1	1	1	1
11	SENSOR FLAME	1184322	-	-	-	1	-	-	-	1	-	-	-	-	-	-
12	IGNITOR	1176919	1	1	1	-	1	1	1	-	-	-	-	-	-	-
12	IGNITOR	1176919	-	-	-	-	-	-	-	-	1	1	1	1	1	1
12	IGNITOR	1176919	-	-	-	1	-	-	-	1	-	-	-	-	-	-
13	MODULE CONTROL	1183509	1	1	-	-	1	1	-	-	-	-	-	-	-	-
13	CONTROL ECM	1184366	-	-	1	-	-	-	1	-	-	-	-	-	-	-
13	CONTROL ECM	1184366	-	-	-	-	-	-	-	-	1	1	1	1	1	1
13	CONTROL ECM	1184366	-	-	-	1	-	-	-	1	-	-	-	-	-	-
14	ORIFICE	1177213	3	4	5	-	3	4	5	-	-	-	-	-	-	-
14	ORIFICE	1177213	-	-	-	-	-	-	-	-	3	4	5	3	4	5
14	ORIFICE	1177213	-	-	-	6	-	-	-	6	-	-	-	-	-	-
15	VALVE GAS	1184333	1	1	1	-	1	1	1	-	-	-	-	-	-	-
15	VALVE GAS	1184333	-	-	-	-	-	-	-	-	1	1	1	1	1	1
15	VALVE GAS	1184333	-	-	-	1	-	-	-	1	-	-	-	-	-	-
17	SWITCH MAIN LIMIT	1184421	1	-	-	-	1	-	-	-	-	-	-	-	-	-

- continued on next page -

PARTS LIST (continued)

KEY NO.	DESCRIPTION	FAST PARTS NO.	F9MAC								G9MAC					
			C0601714A1	C0801714A1	1002120A1	1202422A1	C0601714A1	C0801714A1	1002120A1	1202422A1	C0602120A2	C0802120A2	1002122A2	C0602120A2	C0802120A2	1002122A2
17	SWITCH MAIN LIMIT	1184421	-	-	-	-	-	-	-	-	-	-	1	-	-	1
17	SWITCH MAIN LIMIT	1184422	-	1	-	-	-	1	-	-	-	-	-	-	-	-
17	SWITCH MAIN LIMIT	1184424	-	-	1	-	-	-	1	-	-	-	-	-	-	-
17	SWITCH MAIN LIMIT	1184424	-	-	-	-	-	-	-	-	1	-	-	1	-	-
17	SWITCH MAIN LIMIT	1184424	-	-	-	1	-	-	-	1	-	-	-	-	-	-
17	SWITCH ASY MAIN LIMIT	1184879	-	-	-	-	-	-	-	-	-	1	-	-	1	-
18	INDUCER ASY	1184269	1	1	1	-	1	1	1	-	-	-	-	-	-	-
18	INDUCER ASY	1184269	-	-	-	1	-	-	-	1	-	-	-	-	-	-
18	INDUCER ASY	1184884	-	-	-	-	-	-	-	-	1	1	1	1	1	1
20	VENT ELBOW	1184313	1	1	1	-	1	1	1	-	-	-	-	-	-	-
20	VENT ELBOW	1184313	-	-	-	-	-	-	-	-	1	1	1	1	1	1
20	VENT ELBOW	1184313	-	-	-	1	-	-	-	1	-	-	-	-	-	-
22	CONTROL INDUCER	1184312	-	-	-	-	-	-	-	-	1	1	1	1	1	1
23	TRAP ASY CONDENSING	1184288	1	1	1	-	1	1	1	-	-	-	-	-	-	-
23	TRAP ASY CONDENSING	1184288	-	-	-	-	-	-	-	-	1	1	1	1	1	1
23	TRAP ASY CONDENSING	1184288	-	-	-	1	-	-	-	1	-	-	-	-	-	-
25	HARNESS ASY PRESS SWITCH	1184328	1	1	1	-	1	1	1	-	-	-	-	-	-	-
25	HARNESS ASY PRESS SWITCH	1184328	-	-	-	-	-	-	-	-	1	1	1	1	1	1
25	HARNESS ASY PRESS SWITCH	1184328	-	-	-	1	-	-	-	1	-	-	-	-	-	-
26	SWITCH ASY PRESSURE	1184274	1	-	-	-	1	-	-	-	-	-	-	-	-	-
26	SWITCH ASY PRESSURE	1184275	-	1	-	-	-	1	-	-	-	-	-	-	-	-
26	SWITCH ASY PRESSURE	1184275	-	-	-	-	-	-	-	-	-	1	-	-	1	-
26	SWITCH ASY PRESSURE	1184276	-	-	1	-	-	-	1	-	-	-	-	-	-	-
26	SWITCH ASY PRESSURE	1184276	-	-	-	-	-	-	-	-	-	-	1	-	-	1
26	SWITCH ASY PRESSURE	1184277	-	-	-	1	-	-	-	1	-	-	-	-	-	-
26	SWITCH ASY VENT PRESSURE	1184801	-	-	-	-	-	-	-	-	1	-	-	1	-	-
27	LATCH DOOR	1184521	4	4	4	-	4	4	4	-	-	-	-	-	-	-
27	LATCH DOOR	1184521	-	-	-	-	-	-	-	-	4	4	4	4	4	4
27	LATCH DOOR	1184521	-	-	-	4	-	-	-	4	-	-	-	-	-	-
28	KNOB DOOR	1184520	4	4	4	-	4	4	4	-	-	-	-	-	-	-
28	KNOB DOOR	1184520	-	-	-	-	-	-	-	-	4	4	4	4	4	4
28	KNOB DOOR	1184520	-	-	-	4	-	-	-	4	-	-	-	-	-	-
29	PLATE LATCH	1184530	4	4	4	-	4	4	4	-	-	-	-	-	-	-
29	PLATE LATCH	1184530	-	-	-	-	-	-	-	-	4	4	4	4	4	4
29	PLATE LATCH	1184530	-	-	-	4	-	-	-	4	-	-	-	-	-	-
30	PLUG MODEL	1184491	1	-	-	-	1	-	-	-	-	-	-	-	-	-
30	PLUG MODEL	1184492	-	1	-	-	-	1	-	-	-	-	-	-	-	-
30	PLUG MODEL	1184493	-	-	1	-	-	-	1	-	-	-	-	-	-	-
30	PLUG MODEL	1184494	-	-	-	1	-	-	-	1	-	-	-	-	-	-
30	PLUG MODEL	1184885	-	-	-	-	-	-	-	-	1	-	-	1	-	-
30	PLUG MODEL	1184886	-	-	-	-	-	-	-	-	-	1	-	-	1	-
30	PLUG MODEL	1184887	-	-	-	-	-	-	-	-	-	-	1	-	-	1
31	CHOKE POWER VS	1172838	-	-	1	-	-	-	1	-	-	-	-	-	-	-
31	CHOKE POWER VS	1172838	-	-	-	-	-	-	-	-	1	1	1	1	1	1
31	CHOKE POWER VS	1172838	-	-	-	1	-	-	-	1	-	-	-	-	-	-
33	BOX COUPLING	1184301	1	1	-	-	1	1	-	-	-	-	-	-	-	-
33	BOX COUPLING	1184301	-	-	-	-	-	-	-	-	-	1	-	-	1	-
33	BOX COUPLING	1184302	-	-	1	-	-	-	1	-	-	-	-	-	-	-
33	BOX COUPLING	1184302	-	-	-	-	-	-	-	-	-	-	1	-	-	1
33	BOX COUPLING	1184303	-	-	-	1	-	-	-	1	-	-	-	-	-	-
33	BOX COUPLING	1184784	-	-	-	-	-	-	-	-	1	-	-	1	-	-
35	PLATE CHOKE	1184796	-	-	-	-	-	-	-	-	1	-	-	1	-	-
16A	SWITCH LIMIT 350 F	1177033	1	1	1	-	1	1	1	-	-	-	-	-	-	-
16A	SWITCH LIMIT 350 F	1177033	-	-	-	-	-	-	-	-	1	2	2	1	2	2

- continued on next page -

PARTS LIST (continued)

KEY NO.	DESCRIPTION	FAST PARTS NO.	F9MAC								G9MAC					
			C0601714A1	C0801714A1	1002120A1	1202422A1	C0601714A1	C0801714A1	1002120A1	1202422A1	C0602120A2	C0802120A2	1002122A2	C0602120A2	C0802120A2	1002122A2
16A	SWITCH LIMIT 350 F	1177033	-	-	-	1	-	-	-	-	-	-	-	-	-	-
16B	SWITCH LIMIT 350 F	1177033	-	1	1	-	-	1	1	-	-	-	-	-	-	-
16B	SWITCH LIMIT 350 F	1177033	-	-	-	1	-	-	-	1	-	-	-	-	-	-
16B	TEMP SWITCH ROLL-OUT	1184323	1	-	-	-	1	-	-	-	-	-	-	-	-	-
16B	TEMP SWITCH ROLL-OUT	1184323	-	-	-	-	-	-	-	-	1	-	-	1	-	-
A	PLATE ASY TOP	1184270	1	-	-	-	1	-	-	-	-	-	-	-	-	-
A	PLATE ASY TOP	1184271	-	1	-	-	-	1	-	-	-	-	-	-	-	-
A	PLATE ASY TOP	1184272	-	-	1	-	-	-	1	-	-	-	-	-	-	-
A	PLATE ASY TOP	1184272	-	-	-	-	-	-	-	-	1	1	1	1	1	1
A	PLATE ASY TOP	1184273	-	-	-	1	-	-	-	1	-	-	-	-	-	-
AA	PANEL CELL	1184522	1	-	-	-	1	-	-	-	-	-	-	-	-	-
AA	PANEL CELL	1184523	-	1	-	-	-	1	-	-	-	-	-	-	-	-
AA	PANEL CELL	1184524	-	-	1	-	-	-	1	-	-	-	-	-	-	-
AA	PANEL CELL	1184524	-	-	-	-	-	-	-	-	-	-	1	-	-	1
AA	PANEL CELL	1184525	-	-	-	1	-	-	-	1	-	-	-	-	-	-
AA	PANEL CELL	1184824	-	-	-	-	-	-	-	-	-	1	-	-	1	-
AA	PANEL CELL	1184888	-	-	-	-	-	-	-	-	1	-	-	1	-	-
AB	GASKET DRAIN HOUSING	1185622	2	2	2	-	2	2	2	-	-	-	-	-	-	-
AB	GASKET DRAIN HOUSING	1185622	-	-	-	-	-	-	-	-	2	2	2	2	2	2
AB	GASKET DRAIN HOUSING	1185622	-	-	-	2	-	-	-	2	-	-	-	-	-	-
AC	GASKET INDUCER INLET	1185621	1	1	1	-	1	1	1	-	-	-	-	-	-	-
AC	GASKET INDUCER INLET	1185621	-	-	-	-	-	-	-	-	1	1	1	1	1	1
AC	GASKET INDUCER INLET	1185621	-	-	-	1	-	-	-	1	-	-	-	-	-	-
B	J BOX AUX	1184529	1	1	1	-	1	1	1	-	-	-	-	-	-	-
B	J BOX AUX	1184529	-	-	-	-	-	-	-	-	1	1	1	1	1	1
B	J BOX AUX	1184529	-	-	-	1	-	-	-	1	-	-	-	-	-	-
BB	GASKET FRONT CELL PANEL	1184309	1	1	-	-	1	1	-	-	-	-	-	-	-	-
BB	GASKET FRONT CELL PANEL	1184309	-	-	-	-	-	-	-	-	1	1	-	1	1	-
BB	GASKET FRONT CELL PANEL	1184310	-	-	1	-	-	-	1	-	-	-	-	-	-	-
BB	GASKET FRONT CELL PANEL	1184310	-	-	-	-	-	-	-	-	-	-	1	-	-	1
BB	GASKET FRONT CELL PANEL	1184311	-	-	-	1	-	-	-	1	-	-	-	-	-	-
C	COVER BOX AUX J	1183422	1	1	1	-	1	1	1	-	-	-	-	-	-	-
C	COVER BOX AUX J	1183422	-	-	-	-	-	-	-	-	1	1	1	1	1	1
C	COVER BOX AUX J	1183422	-	-	-	1	-	-	-	1	-	-	-	-	-	-
CC	GASKET REAR CELL PANEL	1184304	1	1	-	-	1	1	-	-	-	-	-	-	-	-
CC	GASKET REAR CELL PANEL	1184304	-	-	-	-	-	-	-	-	1	1	-	1	1	-
CC	GASKET REAR CELL PANEL	1184305	-	-	1	-	-	-	1	-	-	-	-	-	-	-
CC	GASKET REAR CELL PANEL	1184305	-	-	-	-	-	-	-	-	-	-	1	-	-	1
CC	GASKET REAR CELL PANEL	1184306	-	-	-	1	-	-	-	1	-	-	-	-	-	-
D	SHELF ASY BLOWER	1184278	1	1	-	-	1	1	-	-	-	-	-	-	-	-
D	SHELF ASY BLOWER	1184279	-	-	1	-	-	-	1	-	-	-	-	-	-	-
D	SHELF ASY BLOWER	1184279	-	-	-	-	-	-	-	-	1	-	1	1	-	1
D	SHELF ASY BLOWER	1184280	-	-	-	1	-	-	-	1	-	-	-	-	-	-
D	SHELF ASY BLOWER	1184826	-	-	-	-	-	-	-	-	-	1	-	-	1	-
DD	TURBULATOR	1184308	30	30	36	-	30	30	36	-	-	-	-	-	-	-
DD	TURBULATOR	1184308	-	-	-	-	-	-	-	-	30	30	36	30	30	36
DD	TURBULATOR	1184308	-	-	-	45	-	-	-	45	-	-	-	-	-	-
E	BLOWER HOUSING ASY	1183464	-	-	-	1	-	-	-	1	-	-	-	-	-	-
E	HOUSING ASY BLOWER	1183495	-	-	1	-	-	-	1	-	-	-	-	-	-	-
E	HOUSING ASY BLOWER	1183495	-	-	-	-	-	-	-	-	1	1	1	1	1	1
E	HOUSING ASY BLOWER	1183532	1	1	-	-	1	1	-	-	-	-	-	-	-	-
EE	GASKET MAIN LIMIT	1184307	1	1	1	-	1	1	1	-	-	-	-	-	-	-
EE	GASKET MAIN LIMIT	1184307	-	-	-	-	-	-	-	-	1	1	1	1	1	1
EE	GASKET MAIN LIMIT	1184307	-	-	-	1	-	-	-	1	-	-	-	-	-	-

- continued on next page -

PARTS LIST (continued)

KEY NO.	DESCRIPTION	FAST PARTS NO.	F9MAC								G9MAC					
			C0601714A1	C0801714A1	1002120A1	1202422A1	C0601714A1	C0801714A1	1002120A1	1202422A1	C0602120A2	C0802120A2	1002122A2	C0602120A2	C0802120A2	1002122A2
G	CUTOFF BLOWER	1176941	-	-	-	1	-	-	-	-	-	-	-	-	-	-
G	CUTOFF BLOWER	1183500	-	-	1	-	-	-	1	-	-	-	-	-	-	-
G	CUTOFF BLOWER	1183500	-	-	-	-	-	-	-	-	1	1	1	1	1	1
G	CUTOFF BLOWER	1183535	1	1	-	-	1	1	-	-	-	-	-	-	-	-
J	BRACKET CONTROL MTG	1183472	1	1	1	-	1	1	1	-	-	-	-	-	-	-
J	BRACKET CONTROL MTG	1183472	-	-	-	-	-	-	-	-	1	1	1	1	1	1
J	BRACKET CONTROL MTG	1183472	-	-	-	1	-	-	-	1	-	-	-	-	-	-
KK	HARNESS ASY VS ECM	1184325	1	1	1	-	1	1	1	-	-	-	-	-	-	-
KK	HARNESS ASY VS ECM	1184325	-	-	-	-	-	-	-	-	1	1	1	1	1	1
KK	HARNESS ASY VS ECM	1184325	-	-	-	1	-	-	-	1	-	-	-	-	-	-
L	DOOR ASY BLOWER	1184285	1	1	-	-	-	-	-	-	-	-	-	-	-	-
L	DOOR ASY BLOWER	1184286	-	-	1	-	-	-	-	-	-	-	-	-	-	-
L	DOOR ASY BLOWER	1184286	-	-	-	-	-	-	-	-	1	1	1	-	-	-
L	DOOR ASY BLOWER	1184287	-	-	-	1	-	-	-	-	-	-	-	-	-	-
L	DOOR ASY BLOWER	1184370	-	-	-	-	1	1	-	-	-	-	-	-	-	-
L	DOOR ASY BLOWER	1184371	-	-	-	-	-	-	1	-	-	-	-	-	-	-
L	DOOR ASY BLOWER	1184371	-	-	-	-	-	-	-	-	-	-	-	1	1	1
L	DOOR ASY BLOWER	1184372	-	-	-	-	-	-	-	1	-	-	-	-	-	-
LL	INDICATOR	1184526	1	1	1	-	1	1	1	-	-	-	-	-	-	-
LL	INDICATOR	1184526	-	-	-	-	-	-	-	-	1	1	1	1	1	1
LL	INDICATOR	1184526	-	-	-	1	-	-	-	1	-	-	-	-	-	-
M	SWITCH BRACKET DOOR	1184289	1	1	1	-	1	1	1	-	-	-	-	-	-	-
M	SWITCH BRACKET DOOR	1184289	-	-	-	-	-	-	-	-	1	1	1	1	1	1
M	SWITCH BRACKET DOOR	1184289	-	-	-	1	-	-	-	1	-	-	-	-	-	-
MM	BRACKET DOOR	1184290	1	1	-	-	1	1	-	-	-	-	-	-	-	-
MM	BRACKET DOOR	1184291	-	-	1	-	-	-	1	-	-	-	-	-	-	-
MM	BRACKET DOOR	1184291	-	-	-	-	-	-	-	-	1	1	1	1	1	1
MM	BRACKET DOOR	1184292	-	-	-	1	-	-	-	1	-	-	-	-	-	-
N	DOOR ASY CONTROL	1184282	1	1	-	-	-	-	-	-	-	-	-	-	-	-
N	DOOR ASY CONTROL	1184283	-	-	1	-	-	-	-	-	-	-	-	-	-	-
N	DOOR ASY CONTROL	1184283	-	-	-	-	-	-	-	-	1	1	1	-	-	-
N	DOOR ASY CONTROL	1184284	-	-	-	1	-	-	-	-	-	-	-	-	-	-
N	DOOR ASY CONTROL	1184367	-	-	-	-	1	1	-	-	-	-	-	-	-	-
N	DOOR ASY CONTROL	1184368	-	-	-	-	-	-	1	-	-	-	-	-	-	-
N	DOOR ASY CONTROL	1184368	-	-	-	-	-	-	-	-	-	-	-	1	1	1
N	DOOR ASY CONTROL	1184369	-	-	-	-	-	-	-	1	-	-	-	-	-	-
P	MANIFOLD	1184329	1	-	-	-	1	-	-	-	-	-	-	-	-	-
P	MANIFOLD	1184329	-	-	-	-	-	-	-	-	1	-	-	1	-	-
P	MANIFOLD	1184330	-	1	-	-	-	1	-	-	-	-	-	-	-	-
P	MANIFOLD	1184330	-	-	-	-	-	-	-	-	-	1	-	-	1	-
P	MANIFOLD	1184331	-	-	1	-	-	-	1	-	-	-	-	-	-	-
P	MANIFOLD	1184331	-	-	-	-	-	-	-	-	-	-	1	-	-	1
P	MANIFOLD	1184332	-	-	-	1	-	-	-	1	-	-	-	-	-	-
PP	PANEL ASY FILLER	1184548	1	1	1	-	1	1	1	-	-	-	-	-	-	-
PP	PANEL ASY FILLER	1184548	-	-	-	-	-	-	-	-	1	1	1	1	1	1
PP	PANEL ASY FILLER	1184549	-	-	-	1	-	-	-	1	-	-	-	-	-	-
T	SUPPORT BURNER ASY	1184314	1	-	-	-	1	-	-	-	-	-	-	-	-	-
T	SUPPORT BURNER ASY	1184314	-	-	-	-	-	-	-	-	1	-	-	1	-	-
T	SUPPORT BURNER ASY	1184315	1	1	1	-	1	1	1	-	-	-	-	-	-	-
T	SUPPORT BURNER ASY	1184315	-	-	-	-	-	-	-	-	-	1	-	-	1	-
T	SUPPORT BURNER ASY	1184316	-	-	1	-	-	-	1	-	-	-	-	-	-	-
T	SUPPORT BURNER ASY	1184316	-	-	-	-	-	-	-	-	-	-	1	-	-	1
T	SUPPORT BURNER ASY	1184317	-	-	-	1	-	-	-	1	-	-	-	-	-	-
TT	BRACKET IGNITOR	1184324	1	1	1	-	1	1	1	-	-	-	-	-	-	-

- continued on next page -

PARTS LIST (continued)

KEY NO.	DESCRIPTION	FAST PARTS NO.	PARTS LIST (continued)													
			F9MAC0601714A1	F9MAC0801714A1	F9MAC1002120A1	F9MAC1202422A1	G9MAC0601714A1	G9MAC0801714A1	G9MAC1002120A1	G9MAC1202422A1	F9MAC0602120A2	F9MAC0802120A2	F9MAC1002122A2	G9MAC0602120A2	G9MAC0802120A2	G9MAC1002122A2
TT	BRACKET IGNITOR	1184324	-	-	-	-	-	-	-	-	-	1	1	1	1	1
TT	BRACKET IGNITOR	1184324	-	-	-	1	-	-	-	-	1	-	-	-	-	-
VV	SCREW THD FORMING 1/4-20X1-1/4	1178570	4	4	4	-	4	4	4	-	-	-	-	-	-	-
VV	SCREW THD FORMING 1/4-20X1-1/4	1178570	-	-	-	-	-	-	-	-	4	4	4	4	4	4
VV	SCREW THD FORMING 1/4-20X1-1/4	1178570	-	-	-	4	-	-	-	4	-	-	-	-	-	-
X	COLLECTOR BOX ASY	1184293	1	1	-	-	1	1	-	-	-	-	-	-	-	-
X	COLLECTOR BOX ASY	1184294	-	-	1	-	-	-	1	-	-	-	-	-	-	-
X	COLLECTOR BOX ASY	1184294	-	-	-	-	-	-	-	-	1	1	1	1	1	1
X	COLLECTOR BOX ASY	1184295	-	-	-	1	-	-	-	1	-	-	-	-	-	-
XX	GASKET COLLECTOR BOX	1184334	1	1	-	-	1	1	-	-	-	-	-	-	-	-
XX	GASKET COLLECTOR BOX	1184335	-	-	1	-	-	-	1	-	-	-	-	-	-	-
XX	GASKET COLLECTOR BOX	1184335	-	-	-	-	-	-	-	-	1	1	1	1	1	1
XX	GASKET COLLECTOR BOX	1184336	-	-	-	1	-	-	-	1	-	-	-	-	-	-
Y	GASKET COLLECTOR BOX	1184337	2	2	2	-	2	2	2	-	-	-	-	-	-	-
Y	GASKET COLLECTOR BOX	1184337	-	-	-	-	-	-	-	-	2	2	2	2	2	2
Y	GASKET COLLECTOR BOX	1184337	-	-	-	2	-	-	-	2	-	-	-	-	-	-
YY	DRAIN PLUG COLLECTOR BOX	1184338	4	4	4	-	4	4	4	-	-	-	-	-	-	-
YY	DRAIN PLUG COLLECTOR BOX	1184338	-	-	-	-	-	-	-	-	4	4	4	4	4	4
YY	DRAIN PLUG COLLECTOR BOX	1184338	-	-	-	4	-	-	-	4	-	-	-	-	-	-
Z	BRACKET BLOWER MTG	1184326	2	2	2	-	2	2	2	-	-	-	-	-	-	-
Z	BRACKET BLOWER MTG	1184326	-	-	-	-	-	-	-	-	2	2	2	2	2	2
Z	BRACKET BLOWER MTG	1184326	-	-	-	2	-	-	-	2	-	-	-	-	-	-
ZZ	BRACKET HANGER	1184551	2	2	2	-	2	2	2	-	-	-	-	-	-	-
ZZ	BRACKET HANGER	1184551	-	-	-	-	-	-	-	-	1	1	1	1	1	1
ZZ	BRACKET HANGER	1184551	-	-	-	2	-	-	-	2	-	-	-	-	-	-
PARTS NOT SHOWN																
)	HARNESS ASY	1184281	1	1	1	-	1	1	1	-	-	-	-	-	-	-
)	HARNESS ASY	1184281	-	-	-	-	-	-	-	-	1	1	1	1	1	1
)	HARNESS ASY	1184281	-	-	-	1	-	-	-	1	-	-	-	-	-	-
)	KIT RUBBER PARTS	1184481	1	1	1	-	1	1	1	-	-	-	-	-	-	-
)	KIT RUBBER PARTS	1184481	-	-	-	-	-	-	-	-	1	1	1	1	1	1
)	KIT RUBBER PARTS	1184481	-	-	-	1	-	-	-	1	-	-	-	-	-	-
)	BAG LOOSE PARTS	1184517	1	1	1	-	1	1	1	-	-	-	-	-	-	-
)	BAG LOOSE PARTS	1184517	-	-	-	-	-	-	-	-	1	1	1	1	1	1
)	BAG LOOSE PARTS	1184517	-	-	-	1	-	-	-	1	-	-	-	-	-	-
)	HARNESS ASY INDUCER	1185609	1	1	1	-	1	1	1	-	-	-	-	-	-	-
)	HARNESS ASY INDUCER	1185609	-	-	-	-	-	-	-	-	1	1	1	1	1	1
)	HARNESS ASY INDUCER	1185609	-	-	-	1	-	-	-	1	-	-	-	-	-	-
)	NAHA01001LP - CNV KIT NAT TO LP	1184527	1	1	1	1	1	1	1	1	1	1	1	1	1	1
)	NAHA01001NG - CNV KIT LP TO NAT	1184528	1	1	1	1	1	1	1	1	1	1	1	1	1	1