

# TECHNICAL SUPPORT MANUAL

## Fan Coils

### FEA4X, FSA4X, WAHA

#### Safety Labeling and Signal Words

##### DANGER, WARNING, CAUTION, and NOTE

The signal words **DANGER**, **WARNING**, **CAUTION**, and **NOTE** are used to identify levels of hazard seriousness. The signal word **DANGER** is only used on product labels to signify an immediate hazard. The signal words **WARNING**, **CAUTION**, and **NOTE** will be used on product labels and throughout this manual and other manuals that may apply to the product.

**DANGER** – Immediate hazards which **will** result in severe personal injury or death.

**WARNING** – Hazards or unsafe practices which **could** result in severe personal injury or death.

**CAUTION** – Hazards or unsafe practices which **may** result in minor personal injury or product or property damage.

**NOTE** – Used to highlight suggestions which **will** result in enhanced installation, reliability, or operation.

##### Signal Words in Manuals

The signal word **WARNING** is used throughout this manual in the following manner:



The signal word **CAUTION** is used throughout this manual in the following manner:



##### Signal Words on Product Labeling


Signal words are used in combination with colors and/or pictures on product labels.

#### TABLE OF CONTENTS

|                                   |         |
|-----------------------------------|---------|
| Model Number Identification ..... | 2       |
| Wiring Diagram FEA4X & WAHA ..... | 3       |
| Wiring Diagram FSA4X .....        | 4       |
| Airflow Tables .....              | 5       |
| Exploded Drawing .....            | 6       |
| Parts List FEA4X .....            | 7 – 8   |
| Parts List FSA4X .....            | 9 – 10  |
| Parts List WAHA .....             | 11 – 12 |

#### MODELS

|             |             |             |
|-------------|-------------|-------------|
| FEA4X1805A1 | FSA4X1800A1 | WAHA18054A1 |
| FEA4X1807A1 | FSA4X1805A1 | WAHA18074A1 |
| FEA4X2405A1 | FSA4X1807A1 | WAHA24054A1 |
| FEA4X2407A1 | FSA4X1811A1 | WAHA24074A1 |
| FEA4X2411A1 | FSA4X2400A1 | WAHA24114A1 |
| FEA4X3005A1 | FSA4X2405A1 | WAHA30054A1 |
| FEA4X3007A1 | FSA4X2407A1 | WAHA30074A1 |
| FEA4X3011A1 | FSA4X2411A1 | WAHA30114A1 |
| FEA4X3605A1 | FSA4X3000A1 | WAHA36054A1 |
| FEA4X3607A1 | FSA4X3005A1 | WAHA36074A1 |
| FEA4X3611A1 | FSA4X3007A1 | WAHA36114A1 |
|             | FSA4X3011A1 |             |
|             | FSA4X3600A1 |             |
|             | FSA4X3605A1 |             |
|             | FSA4X3607A1 |             |
|             | FSA4X3611A1 |             |



**ELECTRICAL SHOCK HAZARD**

Failure to turn off electric power could result in personal injury or death.

Before installing or servicing system, turn off main power to the system. There may be more than one disconnect switch, including accessory heater(s).

| FAN COIL MODEL NUMBER IDENTIFICATION GUIDE |  |                           |   |                   |   |             |    |                 |   |                  |
|--|--|---------------------------|---|-------------------|---|-------------|----|-----------------|---|------------------|
|  |  | F                         | E | A                 | 4 | X           | 18 | 05              | A | 1                |
| F = Fan Coil                               |  |                           |   |                   |   |             |    |                 |   |                  |
| E = High Efficiency ECM                    |  |                           |   |                   |   |             |    |                 |   |                  |
| S = Standard PSC                           |  |                           |   |                   |   |             |    |                 |   |                  |
|  |  | MOTOR TYPE                |   |                   |   |             |    |                 |   |                  |
| A = Apartment                              |  |                           |   | INSTALLATION TYPE |   |             |    |                 |   |                  |
| 2 = R-22                                   |  |                           |   |                   |   |             |    |                 |   |                  |
| 4 = R-410A                                 |  |                           |   |                   |   | REFRIGERANT |    |                 |   |                  |
| X = TXV                                    |  |                           |   |                   |   |             |    | METERING DEVICE |   |                  |
| 18 = 18,000 BTUH = 1½ tons                 |  | 24 = 24,000 BTUH = 2 tons |   |                   |   |             |    |                 |   |                  |
| 30 = 30,000 BTUH = 2½ tons                 |  | 36 = 36,000 BTUH = 3 tons |   |                   |   |             |    |                 |   | NOMINAL CAPACITY |
| 05 = kW electric heat (factory installed)  |  |                           |   |                   |   |             |    |                 |   |                  |
| 07 = kW electric heat (factory installed)  |  |                           |   |                   |   |             |    |                 |   |                  |
| 11 = kW electric heat (factory installed)  |  |                           |   |                   |   |             |    |                 |   | HEAT             |
| Sales Code                                 |  |                           |   |                   |   |             |    |                 |   |                  |
| Engineering Revision                       |  |                           |   |                   |   |             |    |                 |   |                  |

| FAN COIL MODEL NUMBER IDENTIFICATION GUIDE |  |                           |   |                   |    |    |   |   |   |                      |
|--|--|---------------------------|---|-------------------|----|----|---|---|---|----------------------|
|  |  | WA                        | H | A                 | 18 | 05 | 4 | A | 1 |                      |
| WA = Air Handler                           |  |                           |   |                   |    |    |   |   |   |                      |
| H = High Efficiency ECM                    |  |                           |   |                   |    |    |   |   |   |                      |
| A = Apartment                              |  |                           |   | INSTALLATION TYPE |    |    |   |   |   |                      |
| 18 = 18,000 BTUH = 1½ tons                 |  | 24 = 24,000 BTUH = 2 tons |   |                   |    |    |   |   |   |                      |
| 30 = 30,000 BTUH = 2½ tons                 |  | 36 = 36,000 BTUH = 3 tons |   |                   |    |    |   |   |   | NOMINAL CLG CAPACITY |
| 05 = kW electric heat (factory installed)  |  |                           |   |                   |    |    |   |   |   |                      |
| 07 = kW electric heat (factory installed)  |  |                           |   |                   |    |    |   |   |   |                      |
| 11 = kW electric heat (factory installed)  |  |                           |   |                   |    |    |   |   |   | HEAT                 |
| 2 = R-22                                   |  |                           |   |                   |    |    |   |   |   |                      |
| 4 = R-410A                                 |  |                           |   |                   |    |    |   |   |   | REFRIGERANT          |
| SALES DIGIT                                |  |                           |   |                   |    |    |   |   |   |                      |
| EXTRA DIGIT                                |  |                           |   |                   |    |    |   |   |   |                      |

| ELECTRIC HEATER MODEL NUMBER IDENTIFICATION GUIDE                      |  |            |  |    |   |   |   |   |  |                    |
|--|--|------------|--|----|---|---|---|---|--|--------------------|
|  |  | EHK        |  | 05 | A | K | N | 1 |  |                    |
| EHK = Electric Heater Kit  |  |            |  |    |   |   |   |   |  |                    |
| 05 = 5 kW  |  | 18 = 18 kW |  |    |   |   |   |   |  |                    |
| 07 = 7 kW  |  | 20 = 20 kW |  |    |   |   |   |   |  |                    |
| 09 = 9 kW  |  | 25 = 25 kW |  |    |   |   |   |   |  |                    |
| 10 = 10 kW   |  | 30 = 30 kW |  |    |   |   |   |   |  |                    |
| 15 = 15 kW   |  |            |  |    |   |   |   |   |  | NOMINAL HEAT VALUE |
| Sales Code   |  |            |  |    |   |   |   |   |  |                    |
| K = 208 / 230 single-phase   |  |            |  |    |   |   |   |   |  |                    |
| H = 208 / 230, 3-phase   |  |            |  |    |   |   |   |   |  |                    |
| KC = 208 / 230, supplied as single phase, field convertible to 3-phase |  |            |  |    |   |   |   |   |  |                    |
| HC = 208 / 230 supplied as 3-phase, field convertible to single phase  |  |            |  |    |   |   |   |   |  | VOLTAGE (60 Hz)    |
| Product Identifier   |  |            |  |    |   |   |   |   |  |                    |
| Engineering Code   |  |            |  |    |   |   |   |   |  |                    |

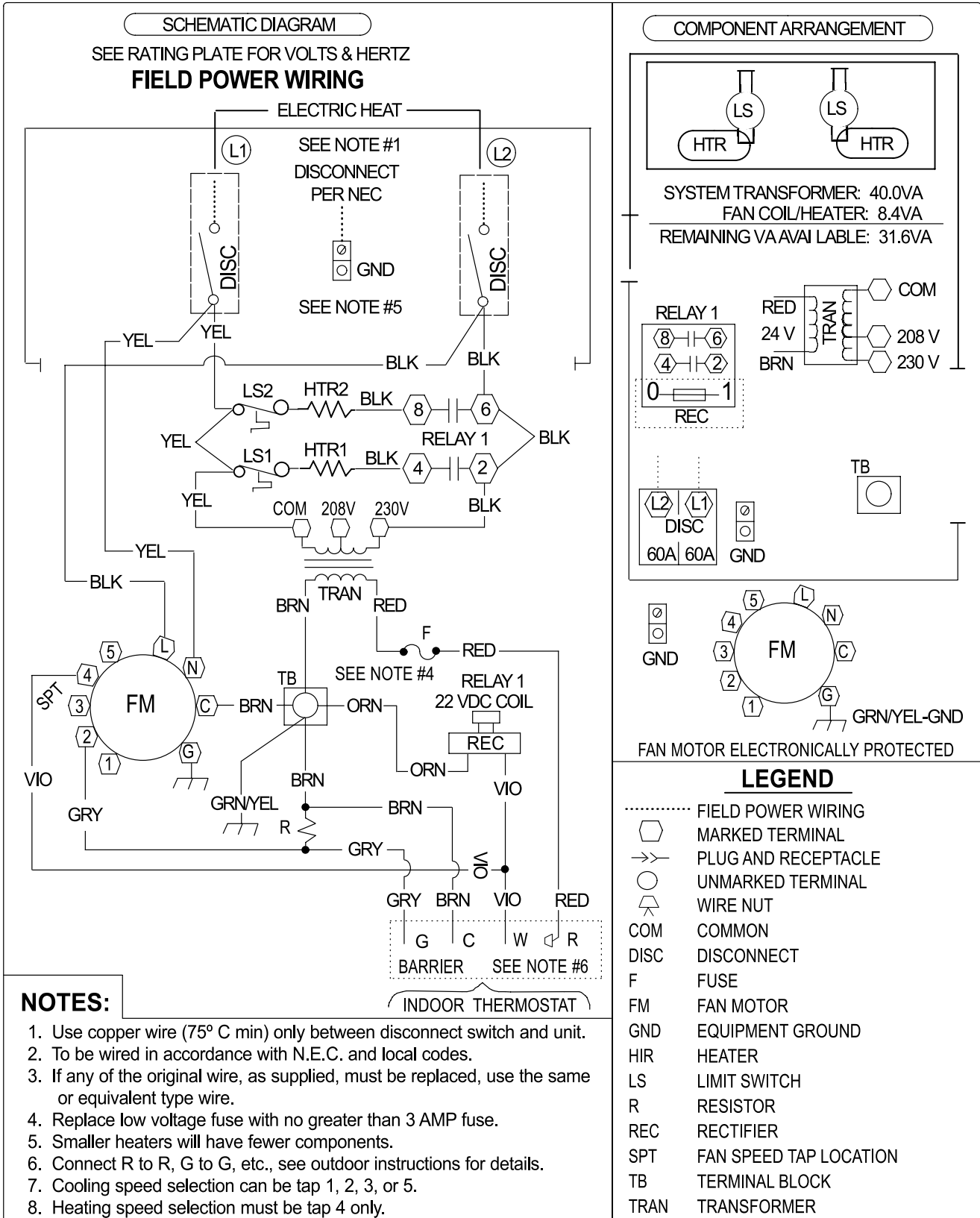
| ACCESSORY MODEL NUMBER IDENTIFICATION GUIDE |  |  |   |    |     |    |   |   |  |  |
|---|--|--|---|----|-----|----|---|---|--|--|
|   |  | A                                      | M | WK | 001 | WG | A | 1 |  |  |
| A = Accessory                               |  |  |   |    |     |    |   |   |  |  |
| C = Cooling                                 |  | M = Multi-use (Cooling and/or Heating) |   |    |     |    |   |   |  |  |
| H = Heating                                 |  | X = Special                            |   |    |     |    |   |   |  |  |
|   |  | PRODUCT TYPE                           |   |    |     |    |   |   |  |  |
| Series                                      |  |  |   |    |     |    |   |   |  |  |
| Product Identifier                          |  |  |   |    |     |    |   |   |  |  |
| Product Identifier (see below)              |  |  |   |    |     |    |   |   |  |  |
| Sales Code                                  |  |  |   |    |     |    |   |   |  |  |
| Engineering Revision                        |  |  |   |    |     |    |   |   |  |  |
| WG = Louvered Wall Panel with Frame         |  |  |   |    |     |    |   |   |  |  |

**Product Identifier Codes**

AH = Auxiliary Heater  
 CK = Cooling Control Kit

MK = Wall Mounting Brackets Kit  
 WG = Louvered Wall Panel with Frame

FEA4X AND WAHA



**NOTES:**

1. Use copper wire (75° C min) only between disconnect switch and unit.
2. To be wired in accordance with N.E.C. and local codes.
3. If any of the original wire, as supplied, must be replaced, use the same or equivalent type wire.
4. Replace low voltage fuse with no greater than 3 AMP fuse.
5. Smaller heaters will have fewer components.
6. Connect R to R, G to G, etc., see outdoor instructions for details.
7. Cooling speed selection can be tap 1, 2, 3, or 4.
8. Heating speed selection must be tap 4 only.

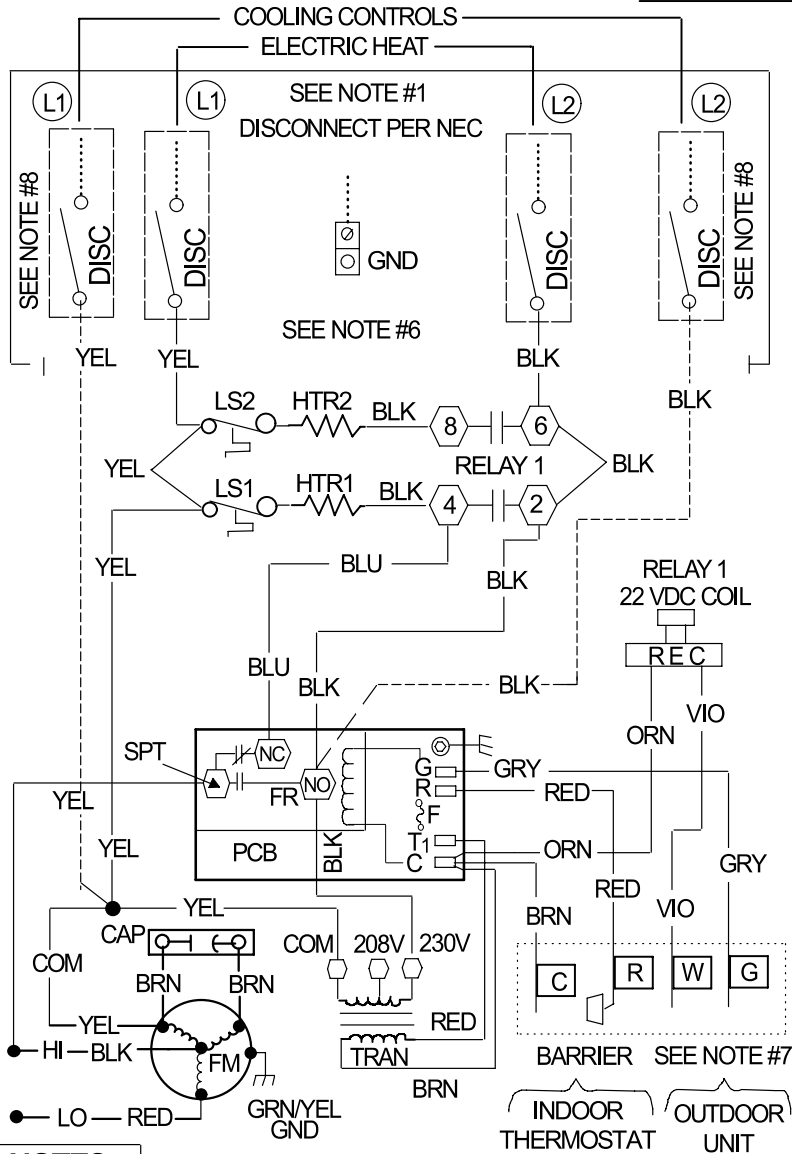
**This compartment must be closed except when servicing.**

← ROTATION

335826-101 REV. B

FSA4X

**SCHMATIC DIAGRAM**  
SEE RATING PLATE FOR VOLTS & HERTZ  
**FIELD POWER WIRING**

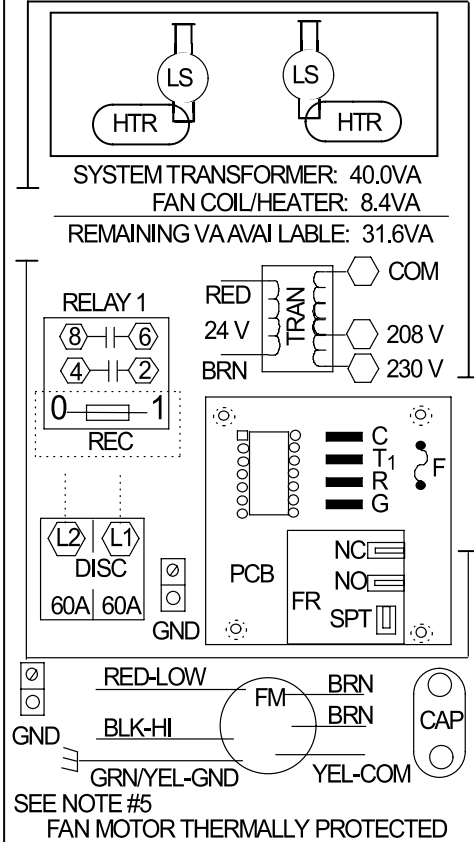


**NOTES:**

1. Use copper wire (75° C min) only between disconnect switch and unit.
2. To be wired in accordance with N.E.C. and local codes.
3. If any of the original wire, as supplied, must be replaced, use the same or equivalent type wire.
4. Replace low voltage fuse with no greater than 5 AMP fuse.
5. (2) Speed Motor uses HI (BLK) and LOW (RED).
6. Smaller heaters will have fewer components.
7. Connect R to R, G to G, etc., see outdoor instructions for details.
8. Cooling controls wiring not used with electric heaters.
9. Motor speed selection for 018 and 024 sizes with 11 kW heater and heat pump is High. All other heater combinations is Low.

**CAUTION:**  
NOT SUITABLE FOR USE ON SYSTEMS EXCEEDING 150V TO GROUND  
**ATTENTION:**  
NE CONVIENT PAS AUX INSTALLATIONS DE PLUS DE 150 V A LA TERRE

**COMPONENT ARRANGEMENT**



**LEGEND**

- CAP CAPACITOR
- COM COMMON
- DISC DISCONNECT
- F FUSE
- FM FAN MOTOR
- ..... FIELD POWER WIRING
- FR PCB FAN RELAY
- GND EQUIPMENT GROUND
- HTR HEATER
- LS LIMIT SWITCH
- ◻ MARKED TERMINAL
- > PLUG AND RECEPTACLE
- PCB PRINTED CIRCUIT BOARD
- REC RECTIFIER
- SPT FAN SPEED TAP LOCATION
- TRAN TRANSFORMER
- UNMARKED TERMINAL

**This compartment must be closed except when servicing.**



**324494-101 REV. E**

| AIRFLOW PERFORMANCE - CFM at a given Speed and Static reading |              |   |      |      |      |      |      |
|---|--------------|---|------|------|------|------|------|
| Model Size  | Blower Speed | Measured Static Pressure, inlet to outlet (inches water column) |      |      |      |      |      |
|   |              | 0.10  | 0.20 | 0.30 | 0.40 | 0.50 | 0.60 |
| FEA4X18<br>FSA4X18<br>WAHA18                                  | High         | 995   | 955  | 910  | 862  | 811  | -    |
|   | Low          | 738   | 711  | 678  | 641  | 600  | -    |
| FEA4X24<br>FSA4X24<br>WAHA24                                  | High         | 950   | 908  | 861  | 810  | 754  | 693  |
|   | Low          | 732   | 699  | 662  | 621  | 576  | 527  |
| FEA4X30<br>FSA4X30<br>WAHA30                                  | High         | 1128  | 1082 | 1030 | 973  | 911  | 845  |
|   | Low          | 1053  | 1011 | 964  | 911  | 854  | 791  |
| FEA4X36<br>FSA4X36<br>WAHA36                                  | High         | 1408  | 1355 | 1295 | 1227 | 1152 | 1068 |
|   | Low          | 1191  | 1157 | 1113 | 1061 | 1000 | 931  |

NOTES:

1. Airflow based on dry coil at 230V with factory approved filter and 2 element electric heater.
2. Not recommended for use above 0.60 inches water column external static pressure.
3. Shaded cells indicate airflow is greater than 450 CFM per ton.

**STATIC PRESSURE CORRECTION FROM DRY TO WET COIL (inches of water column)**

AIRFLOW PERFORMANCE chart was developed using fan coils with DRY coils. When taking a static reading across a WET coil, adjust the static pressure numbers in the AIRFLOW PERFORMANCE chart by **adding** the values in this table.

| Model Size                   | CFM   |       |       |       |       |       |       |       |       |
|------------------------------|-------|-------|-------|-------|-------|-------|-------|-------|-------|
|                              | 500   | 600   | 700   | 800   | 900   | 1000  | 1100  | 1200  | 1300  |
| FEA4X18<br>FSA4X18<br>WAHA18 | 0.034 | 0.049 | 0.063 | -     | -     | -     | -     | -     | -     |
| FEA4X24<br>FSA4X24<br>WAHA24 | 0.021 | 0.033 | 0.045 | 0.056 | 0.068 | -     | -     | -     | -     |
| FEA4X30<br>FSA4X30<br>WAHA30 | -     | -     | -     | 0.056 | 0.068 | 0.079 | 0.090 | -     | -     |
| FEA4X36<br>FSA4X36<br>WAHA36 | -     | -     | -     | -     | -     | 0.055 | 0.064 | 0.073 | 0.081 |

**FEA4X AND WAHA**

**STATIC PRESSURE CORRECTION FOR ELECTRIC HEATERS (inches of water column)**

AIRFLOW PERFORMANCE chart was developed using fan coils with 2-element electric heaters. When using a 1-element electric heater or no electric heater, adjust the static pressure numbers in the AIRFLOW PERFORMANCE chart by **subtracting** the values in this table.

| Electric Heater | CFM   |       |       |       |       |       |       |       |
|-----------------|-------|-------|-------|-------|-------|-------|-------|-------|
|                 | 400   | 500   | 600   | 700   | 800   | 900   | 1000  | 1100  |
| 5 kW            | 0.007 | 0.010 | 0.015 | 0.025 | 0.035 | 0.55  | 0.070 | 0.080 |
| 7 kW and 11 kW  | 0.010 | 0.012 | 0.018 | 0.028 | 0.050 | 0.075 | 0.100 | 0.130 |

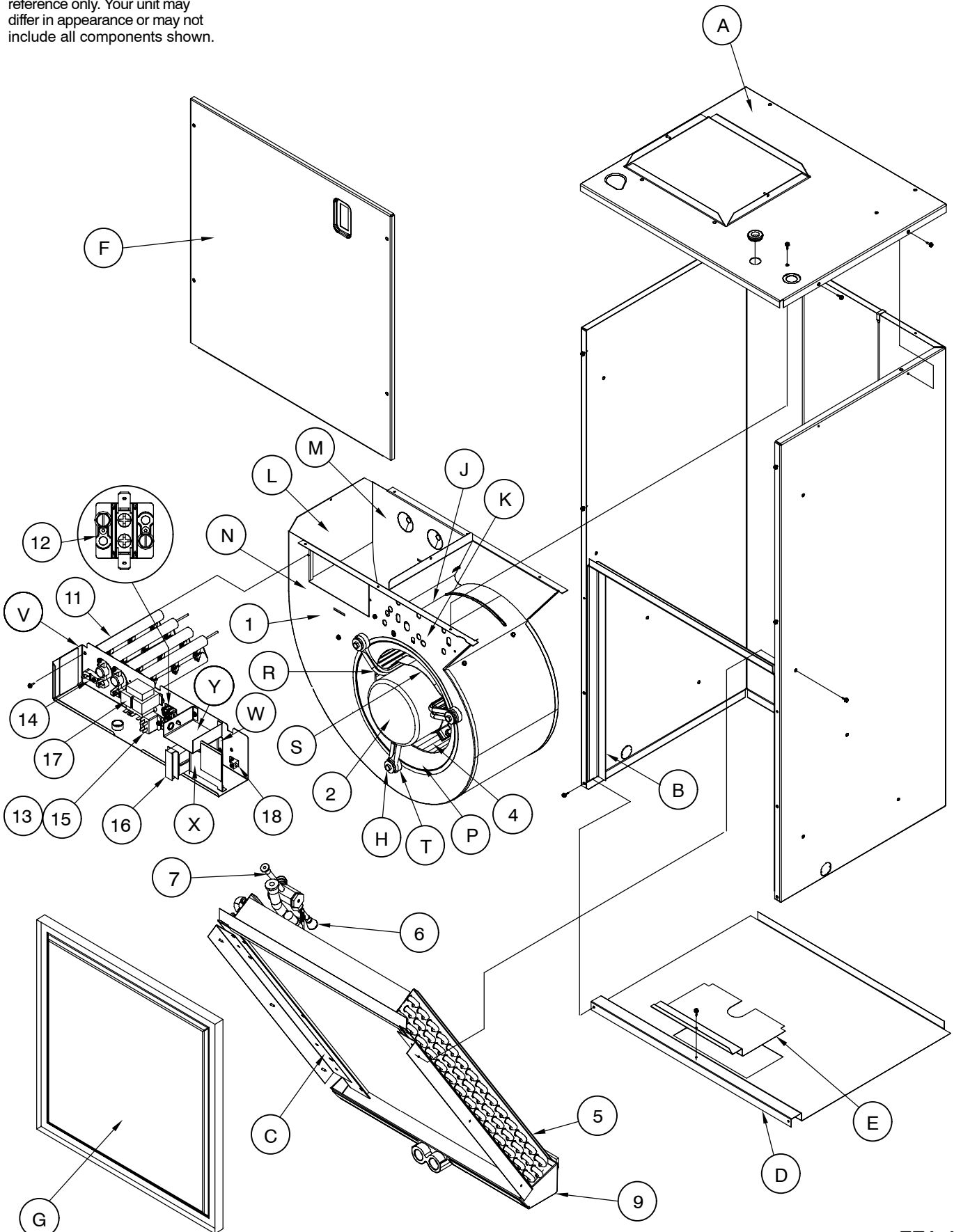
**FSA4X**

**STATIC PRESSURE CORRECTION FOR ELECTRIC HEATERS (inches of water column)**

AIRFLOW PERFORMANCE chart was developed using fan coils with 2-element electric heaters (7.5 kW or 11 kW). When using a 1-element electric heater (5 kW), or no electric heater, adjust the static pressure numbers in the AIRFLOW PERFORMANCE chart by **subtracting** the values in this table.

| Electric Heater | CFM  |      |      |      |      |      |      |      |      |
|-----------------|------|------|------|------|------|------|------|------|------|
|                 | 500  | 600  | 700  | 800  | 900  | 1000 | 1100 | 1200 | 1300 |
| none            | .012 | .018 | .028 | .050 | .075 | .100 | .130 | -    | -    |
| 5 kW            | .002 | .003 | .003 | .015 | .020 | .030 | .050 | -    | -    |

NOTE: This illustration is for reference only. Your unit may differ in appearance or may not include all components shown.



FEA4X

| FEA4X PARTS LIST |                               |          |             |             |             |             |             |             |             |             |             |             |             |
|------------------|-------------------------------|----------|-------------|-------------|-------------|-------------|-------------|-------------|-------------|-------------|-------------|-------------|-------------|
| KEY NO.          | DESCRIPTION                   | PART NO. | FEA4X1805A1 | FEA4X1807A1 | FEA4X2405A1 | FEA4X2407A1 | FEA4X2411A1 | FEA4X3005A1 | FEA4X3007A1 | FEA4X3011A1 | FEA4X3605A1 | FEA4X3607A1 | FEA4X3611A1 |
| 01               | BLOWER ASY                    | 1179360  | 1           | 1           | -           | -           | -           | -           | -           | -           | -           | -           | -           |
| 01               |                               | 1179361  | -           | -           | 1           | 1           | 1           | -           | -           | -           | -           | -           | -           |
| 01               |                               | 1179362  | -           | -           | -           | -           | -           | 1           | 1           | 1           | -           | -           | -           |
| 01               |                               | 1179363  | -           | -           | -           | -           | -           | -           | -           | -           | 1           | 1           | 1           |
| 02               | MTR BLR 1/3 HP                | 1179355  | 1           | 1           | -           | -           | -           | -           | -           | -           | -           | -           | -           |
| 02               |                               | 1179356  | -           | -           | 1           | 1           | 1           | -           | -           | -           | -           | -           | -           |
| 02               |                               | 1179357  | -           | -           | -           | -           | -           | 1           | 1           | 1           | -           | -           | -           |
| 02               | MTR BLR 1/2 HP                | 1179358  | -           | -           | -           | -           | -           | -           | -           | -           | 1           | 1           | 1           |
| 04               | WHEEL DD10X6X1/2 CCW CV       | 1170652  | 1           | 1           | 1           | 1           | 1           | -           | -           | -           | -           | -           | -           |
| 04               | WHEEL DD10X7X1/2 CCW CV       | 1173847  | -           | -           | -           | -           | -           | 1           | 1           | 1           | 1           | 1           | 1           |
| 05               | COIL ASY EVAP                 | 1179345  | 1           | 1           | -           | -           | -           | -           | -           | -           | -           | -           | -           |
| 05               |                               | 1179346  | -           | -           | 1           | 1           | 1           | -           | -           | -           | -           | -           | -           |
| 05               |                               | 1179348  | -           | -           | -           | -           | -           | 1           | 1           | 1           | -           | -           | -           |
| 05               |                               | 1179347  | -           | -           | -           | -           | -           | -           | -           | -           | 1           | 1           | 1           |
| 06               | DISTRIBUTOR ASY               | 1172624  | 1           | 1           | -           | -           | -           | -           | -           | -           | -           | -           | -           |
| 06               |                               | 1171603  | -           | -           | 1           | 1           | 1           | -           | -           | -           | -           | -           | -           |
| 06               |                               | 1172984  | -           | -           | -           | -           | -           | 1           | 1           | 1           | -           | -           | -           |
| 06               |                               | 1171604  | -           | -           | -           | -           | -           | -           | -           | -           | 1           | 1           | 1           |
| 07               | VALVE TXV 2.0 BI-FLO R410     | 1179353  | 1           | 1           | 1           | 1           | 1           | -           | -           | -           | -           | -           | -           |
| 07               | VALVE TXV 3.0 BI-FLO R410     | 1179354  | -           | -           | -           | -           | -           | 1           | 1           | 1           | 1           | 1           | 1           |
| 09               | PAN CONDENSATE ASY            | 1170656  | 1           | 1           | 1           | 1           | 1           | 1           | 1           | 1           | 1           | 1           | 1           |
| 11               | ELEMENT ASSY 5 KW             | 1173900  | 1           | -           | 1           | -           | -           | 1           | -           | -           | 1           | -           | -           |
| 11               | ELEMENT ASSY 3.75 KW          | 1173901  | -           | 2           | -           | 2           | -           | -           | 2           | -           | -           | 2           | -           |
| 11               | ELEMENT ASSY 5.5 KW           | 1173902  | -           | -           | -           | -           | 2           | -           | -           | 2           | -           | -           | 2           |
| 12               | TERMINAL BLOCK                | 1179352  | 1           | 1           | 1           | 1           | 1           | 1           | 1           | 1           | 1           | 1           | 1           |
| 13               | BOARD CIRCUIT RECTIFIER CNTRL | 1171780  | 1           | 1           | 1           | 1           | 1           | 1           | 1           | 1           | 1           | 1           | 1           |
| 14               | SWITCH LIMIT DISC O145 C090   | 1170673  | 1           | 2           | 1           | 2           | 2           | 1           | 2           | 2           | 1           | 2           | 2           |
| 15               | RELAY 22V DPST T92S7D22-22    | 1170674  | 1           | 1           | 1           | 1           | 1           | 1           | 1           | 1           | 1           | 1           | 1           |
| 16               | DISCONNECT NON FUSED 60A 240V | 1173837  | 1           | 1           | 1           | 1           | 1           | 1           | 1           | 1           | 1           | 1           | 1           |
| 17               | TRANS 208/230>24 40VA         | 1173844  | 1           | 1           | 1           | 1           | 1           | 1           | 1           | 1           | 1           | 1           | 1           |
| 18               | LUG GROUND                    | 1170677  | 1           | 1           | 1           | 1           | 1           | 1           | 1           | 1           | 1           | 1           | 1           |
| A                | TOP ASSY                      | 1173889  | 1           | 1           | 1           | 1           | 1           | -           | -           | -           | -           | -           | -           |
| A                |                               | 1173892  | -           | -           | -           | -           | -           | 1           | 1           | 1           | 1           | 1           | 1           |
| B                | BRACKET FILTER                | 1170628  | 1           | 1           | 1           | 1           | 1           | -           | -           | -           | -           | -           | -           |
| B                |                               | 1173894  | -           | -           | -           | -           | -           | 1           | 1           | 1           | 1           | 1           | 1           |
| C                | SUPPORT COIL                  | 1170629  | 2           | 2           | 2           | 2           | 2           | -           | -           | -           | -           | -           | -           |
| C                |                               | 1173893  | -           | -           | -           | -           | -           | 2           | 1           | 1           | 1           | 1           | 1           |

- continued on next page -

FEA4X PARTS LIST

| KEY NO.                | DESCRIPTION                  | PART NO. | FEA4X1805A1 | FEA4X1807A1 | FEA4X2405A1 | FEA4X2407A1 | FEA4X2411A1 | FEA4X3005A1 | FEA4X3007A1 | FEA4X3011A1 | FEA4X3605A1 | FEA4X3607A1 | FEA4X3611A1 |
|------------------------|------------------------------|----------|-------------|-------------|-------------|-------------|-------------|-------------|-------------|-------------|-------------|-------------|-------------|
| D                      | BASE FAN COIL                | 1170630  | 1           | 1           | 1           | 1           | 1           | -           | -           | -           | -           | -           | -           |
| D                      |                              | 1173882  | -           | -           | -           | -           | -           | 1           | 1           | 1           | 1           | 1           | 1           |
| E                      | PLATE PATCH                  | 1173883  | 1           | 1           | 1           | 1           | 1           | 1           | 1           | 1           | 1           | 1           | 1           |
| F                      | PANEL ASSY BLOWER DOOR       | 1173890  | 1           | 1           | 1           | 1           | 1           | -           | -           | -           | -           | -           | -           |
| F                      |                              | 1173891  | -           | -           | -           | -           | -           | 1           | 1           | 1           | 1           | 1           | 1           |
| G                      | FILTER 16.5 X 19.625         | 1173885  | 1           | 1           | 1           | 1           | 1           | -           | -           | -           | -           | -           | -           |
| G                      | FILTER 19.625 X 19.625       | 1173886  | -           | -           | -           | -           | -           | 1           | 1           | 1           | 1           | 1           | 1           |
| H                      | SCREW                        | 1170636  | 3           | 3           | 3           | 3           | 3           | 3           | 3           | 3           | 3           | 3           | 3           |
| J                      | PANEL BLOWER CUTOFF          | 1170637  | 1           | 1           | 1           | 1           | 1           | -           | -           | -           | -           | -           | -           |
| J                      | CUTOFF AIR                   | 1173897  | -           | -           | -           | -           | -           | 1           | 1           | 1           | 1           | 1           | 1           |
| K                      | HOUSING BLOWER               | 1170638  | 1           | 1           | 1           | 1           | 1           | -           | -           | -           | -           | -           | -           |
| K                      | HOUSING ASSY DD10-7          | 1173896  | -           | -           | -           | -           | -           | 1           | 1           | 1           | 1           | 1           | 1           |
| L                      | WRAPPER BLOWER               | 1170639  | 1           | 1           | 1           | 1           | 1           | -           | -           | -           | -           | -           | -           |
| L                      |                              | 1173898  | -           | -           | -           | -           | -           | 1           | 1           | 1           | 1           | 1           | 1           |
| M                      | PLATE BLOWER SIDE            | 1170640  | 1           | 1           | 1           | 1           | 1           | 1           | 1           | 1           | 1           | 1           | 1           |
| N                      | PLATE BLOWER SIDE MOTOR SIDE | 1170641  | 1           | 1           | 1           | 1           | 1           | 1           | 1           | 1           | 1           | 1           | 1           |
| P                      | RING INLET                   | 1170642  | 1           | 1           | 1           | 1           | 1           | 1           | 1           | 1           | 1           | 1           | 1           |
| R                      | ARM & GROM ASSY              | 1173747  | 3           | 3           | 3           | 3           | 3           | 3           | 3           | 3           | 3           | 3           | 3           |
| S                      | BAND MOTOR MOUNT             | 1171733  | 1           | 1           | 1           | 1           | 1           | 1           | 1           | 1           | 1           | 1           | 1           |
| T                      | GROMMET MOTOR MOUNT          | 1171738  | 3           | 3           | 3           | 3           | 3           | 3           | 3           | 3           | 3           | 3           | 3           |
| V                      | PANEL CONTROL                | 1170659  | 1           | -           | 1           | -           | -           | 1           | -           | -           | 1           | -           | -           |
| V                      |                              | 1170660  | -           | 1           | -           | 1           | 1           | -           | 1           | 1           | -           | 1           | 1           |
| W                      | BRACKET DISC MTG             | 1170661  | 1           | 1           | 1           | 1           | 1           | 1           | 1           | 1           | 1           | 1           | 1           |
| X                      | PANEL PROTECTIVE             | 1170662  | 1           | 1           | 1           | 1           | 1           | 1           | 1           | 1           | 1           | 1           | 1           |
| Y                      | BARRIER                      | 1170663  | 1           | 1           | 1           | 1           | 1           | 1           | 1           | 1           | 1           | 1           | 1           |
| <b>PARTS NOT SHOWN</b> |                              |          |             |             |             |             |             |             |             |             |             |             |             |
| )                      | HARNESS ASY                  | 1179349  | 1           | 1           | 1           | 1           | 1           | 1           | 1           | 1           | 1           | 1           | 1           |
| )                      |                              | 1179350  | 1           | 1           | 1           | 1           | 1           | 1           | 1           | 1           | 1           | 1           | 1           |
| )                      |                              | 1179351  | 1           | 1           | 1           | 1           | 1           | 1           | 1           | 1           | 1           | 1           | 1           |
| )                      | STRAINER                     | 1171740  | 1           | 1           | 1           | 1           | 1           | 1           | 1           | 1           | 1           | 1           | 1           |
| )                      | PAINT DARK GREY 16OZ AEROSOL | 1171357  | 1           | 1           | 1           | 1           | 1           | 1           | 1           | 1           | 1           | 1           | 1           |
| )                      | EXTENSION ASSY COIL          | 1175061  | 1           | 1           | -           | -           | -           | 1           | 1           | 1           | -           | -           | -           |
| )                      | SHIELD COIL                  | 1175062  | -           | -           | 1           | 1           | 1           | -           | -           | -           | 1           | 1           | 1           |
| )                      | EXTENSION SUPPORT            | 1175064  | 1           | 1           | -           | -           | -           | -           | -           | -           | -           | -           | -           |
| )                      |                              | 1175063  | -           | -           | 1           | 1           | 1           | -           | -           | -           | -           | -           | -           |
| )                      |                              | 1179344  | -           | -           | -           | -           | -           | 1           | 1           | 1           | -           | -           | -           |
| )                      |                              | 1175065  | -           | -           | -           | -           | -           | -           | -           | -           | 1           | 1           | 1           |



| FSA4X PARTS LIST |                           |          |             |             |             |             |             |             |             |             |             |             |             |             |             |             |             |             |
|------------------|---------------------------|----------|-------------|-------------|-------------|-------------|-------------|-------------|-------------|-------------|-------------|-------------|-------------|-------------|-------------|-------------|-------------|-------------|
| KEY NO.          | DESCRIPTION               | PART NO. | FSA4X1800A1 | FSA4X1805A1 | FSA4X1807A1 | FSA4X1811A1 | FSA4X2400A1 | FSA4X2405A1 | FSA4X2407A1 | FSA4X2411A1 | FSA4X3000A1 | FSA4X3005A1 | FSA4X3007A1 | FSA4X3011A1 | FSA4X3600A1 | FSA4X3605A1 | FSA4X3607A1 | FSA4X3611A1 |
| 01               | BLOWER ASSEMBLY DD10-6    | 1170634  | 1           | 1           | 1           | 1           | 1           | 1           | 1           | 1           | -           | -           | -           | -           | -           | -           | -           | -           |
| 01               | DD10-7                    | 1173881  | -           | -           | -           | -           | -           | -           | -           | -           | 1           | 1           | 1           | 1           | -           | -           | -           | -           |
| 01               |                           | 1173895  | -           | -           | -           | -           | -           | -           | -           | -           | -           | -           | -           | -           | 1           | 1           | 1           | 1           |
| 02               | MOTOR, BLOWER 1/5 HP      | 1170645  | 1           | 1           | 1           | 1           | 1           | 1           | 1           | 1           | -           | -           | -           | -           | -           | -           | -           | -           |
| 02               | 1/3 HP                    | 1173839  | -           | -           | -           | -           | -           | -           | -           | -           | 1           | 1           | 1           | 1           | -           | -           | -           | -           |
| 02               |                           | 1173840  | -           | -           | -           | -           | -           | -           | -           | -           | -           | -           | -           | -           | 1           | 1           | 1           | 1           |
| 03               | CAPACITOR 5 MFD 370 VOLTS | 1171727  | 1           | 1           | 1           | 1           | 1           | 1           | 1           | 1           | -           | -           | -           | -           | -           | -           | -           | -           |
| 03               | 10 MFD 370 VOLTS          | 1171729  | -           | -           | -           | -           | -           | -           | -           | -           | 1           | 1           | 1           | 1           | -           | -           | -           | -           |
| 03               | 15 MFD 370 VOLTS          | 1171730  | -           | -           | -           | -           | -           | -           | -           | -           | -           | -           | -           | -           | 1           | 1           | 1           | 1           |
| 04               | WHEEL, BLOWER DD10-6      | 1170652  | -           | -           | -           | -           | 1           | 1           | 1           | 1           | 1           | 1           | 1           | 1           | -           | -           | -           | -           |
| 04               | DD10-7                    | 1173847  | -           | -           | -           | -           | -           | -           | -           | -           | -           | -           | -           | -           | 1           | 1           | 1           | 1           |
| 05               | COIL & HEADER ASSEMBLY    | 1173851  | 1           | 1           | 1           | 1           | -           | -           | -           | -           | -           | -           | -           | -           | -           | -           | -           | -           |
| 05               |                           | 1173850  | -           | -           | -           | -           | 1           | 1           | 1           | 1           | 1           | 1           | 1           | 1           | -           | -           | -           | -           |
| 05               |                           | 1173852  | -           | -           | -           | -           | -           | -           | -           | -           | -           | -           | -           | -           | 1           | 1           | 1           | 1           |
| 06               | DISTRIBUTOR ASSEMBLY      | 1172624  | 1           | 1           | 1           | 1           | -           | -           | -           | -           | -           | -           | -           | -           | -           | -           | -           | -           |
| 06               |                           | 1171603  | -           | -           | -           | -           | 1           | 1           | 1           | 1           | 1           | 1           | 1           | 1           | -           | -           | -           | -           |
| 06               |                           | 1171604  | -           | -           | -           | -           | -           | -           | -           | -           | -           | -           | -           | -           | 1           | 1           | 1           | 1           |
| 07               | VALVE, EXPANSION          | 1176347  | 1           | 1           | 1           | 1           | 1           | 1           | 1           | 1           | 1           | 1           | 1           | 1           | -           | -           | -           | -           |
| 07               |                           | 1176348  | -           | -           | -           | -           | -           | -           | -           | -           | -           | -           | -           | -           | 1           | 1           | 1           | 1           |
| 09               | PAN, CONDENSATE ASSY      | 1170656  | 1           | 1           | 1           | 1           | 1           | 1           | 1           | 1           | 1           | 1           | 1           | 1           | 1           | 1           | 1           | 1           |
| 10               | PAN, CONDENSATE           | 1170657  | 1           | 1           | 1           | 1           | 1           | 1           | 1           | 1           | 1           | 1           | 1           | 1           | 1           | 1           | 1           | 1           |
| 11               | ELEMENT 3.75 KW           | 1173901  | -           | -           | 2           | -           | -           | -           | 2           | -           | -           | -           | 2           | -           | -           | -           | 2           | -           |
| 11               | 5.0 KW                    | 1173900  | -           | 1           | -           | -           | -           | 1           | -           | -           | -           | 1           | -           | -           | -           | 1           | -           | -           |
| 11               | 5.5 KW                    | 1173902  | -           | -           | -           | 2           | -           | -           | -           | 2           | -           | -           | -           | 2           | -           | -           | -           | 2           |
| 12               | BOARD, CIRCUIT W/ TDR     | 1171000  | -           | 1           | 1           | 1           | -           | 1           | 1           | 1           | -           | 1           | 1           | 1           | -           | 1           | 1           | 1           |
| 13               | BOARD, RECTIFIER          | 1171780  | -           | 1           | 1           | 1           | -           | 1           | 1           | 1           | -           | 1           | 1           | 1           | -           | 1           | 1           | 1           |
| 14               | SWITCH, LIMIT             | 1170673  | -           | 1           | 1           | 1           | -           | 1           | 1           | 1           | -           | 1           | 1           | 1           | -           | 1           | 1           | 1           |
| 15               | RELAY                     | 1170674  | -           | 1           | 1           | 1           | -           | 1           | 1           | 1           | -           | 1           | 1           | 1           | -           | 1           | 1           | 1           |
| 16               | DISCONNECT                | 1173837  | -           | 1           | 1           | 1           | -           | 1           | 1           | 1           | -           | 1           | 1           | 1           | -           | 1           | 1           | 1           |
| 17               | TRANSFORMER               | 1173844  | -           | 1           | 1           | 1           | -           | 1           | 1           | 1           | -           | 1           | 1           | 1           | -           | 1           | 1           | 1           |
| 18               | LUG, GROUND               | 1170677  | -           | 1           | 1           | 1           | -           | 1           | 1           | 1           | -           | 1           | 1           | 1           | -           | 1           | 1           | 1           |
| A                | PANEL, TOP                | 1173889  | 1           | 1           | 1           | 1           | 1           | 1           | 1           | 1           | 1           | 1           | 1           | 1           | -           | -           | -           | -           |
| A                |                           | 1173892  | -           | -           | -           | -           | -           | -           | -           | -           | -           | -           | -           | -           | 1           | 1           | 1           | 1           |
| B                | BRACKET, FILTER           | 1170628  | 1           | 1           | 1           | 1           | 1           | 1           | 1           | 1           | 1           | 1           | 1           | 1           | -           | -           | -           | -           |
| B                |                           | 1173894  | -           | -           | -           | -           | -           | -           | -           | -           | -           | -           | -           | -           | 1           | 1           | 1           | 1           |
| C                | SUPPORT, COIL             | 1170629  | 2           | 2           | 2           | 2           | 2           | 2           | 2           | 2           | 2           | 2           | 2           | 2           | -           | -           | -           | -           |
| C                |                           | 1173893  | -           | -           | -           | -           | -           | -           | -           | -           | -           | -           | -           | -           | 2           | 2           | 2           | 2           |
| D                | BASE, FAN COIL            | 1170630  | 1           | 1           | 1           | 1           | 1           | 1           | 1           | 1           | 1           | 1           | 1           | 1           | -           | -           | -           | -           |
| D                |                           | 1173882  | -           | -           | -           | -           | -           | -           | -           | -           | -           | -           | -           | -           | 1           | 1           | 1           | 1           |

- continued on next page -

| FSA4X PARTS LIST       |                               |          |             |             |             |             |             |             |             |             |             |             |             |             |             |             |             |             |
|------------------------|-------------------------------|----------|-------------|-------------|-------------|-------------|-------------|-------------|-------------|-------------|-------------|-------------|-------------|-------------|-------------|-------------|-------------|-------------|
| KEY NO.                | DESCRIPTION                   | PART NO. | FSA4X1800A1 | FSA4X1805A1 | FSA4X1807A1 | FSA4X1811A1 | FSA4X2400A1 | FSA4X2405A1 | FSA4X2407A1 | FSA4X2411A1 | FSA4X3000A1 | FSA4X3005A1 | FSA4X3007A1 | FSA4X3011A1 | FSA4X3600A1 | FSA4X3605A1 | FSA4X3607A1 | FSA4X3611A1 |
| E                      | PLATE, PATCH                  | 1173883  | 1           | 1           | 1           | 1           | 1           | 1           | 1           | 1           | 1           | 1           | 1           | 1           | 1           | 1           | 1           | 1           |
| F                      | PANEL, BLOWER DOOR            | 1173890  | 1           | 1           | 1           | 1           | 1           | 1           | 1           | 1           | 1           | 1           | 1           | 1           | -           | -           | -           | -           |
| F                      |                               | 1173891  | -           | -           | -           | -           | -           | -           | -           | -           | -           | -           | -           | -           | 1           | 1           | 1           | 1           |
| G                      | FILTER 16.5" X 19.625"        | 1173885  | 1           | 1           | 1           | 1           | 1           | 1           | 1           | 1           | 1           | 1           | 1           | 1           | -           | -           | -           | -           |
| G                      | 19.625" X 19.625"             | 1173886  | -           | -           | -           | -           | -           | -           | -           | -           | -           | -           | -           | -           | 1           | 1           | 1           | 1           |
| H                      | SCREW, MOTOR MOUNT            | 1170636  | 3           | 3           | 3           | 3           | 3           | 3           | 3           | 3           | 3           | 3           | 3           | 3           | 3           | 3           | 3           | 3           |
| J                      | PANEL, BLOWER CUTOFF          | 1170637  | 1           | 1           | 1           | 1           | 1           | 1           | 1           | 1           | 1           | 1           | 1           | 1           | -           | -           | -           | -           |
| J                      |                               | 1173897  | -           | -           | -           | -           | -           | -           | -           | -           | -           | -           | -           | -           | 1           | 1           | 1           | 1           |
| K                      | HOUSING ASSY, BLOWER          | 1170638  | 1           | 1           | 1           | 1           | 1           | 1           | 1           | 1           | 1           | 1           | 1           | 1           | -           | -           | -           | -           |
| K                      |                               | 1173896  | -           | -           | -           | -           | -           | -           | -           | -           | -           | -           | -           | -           | 1           | 1           | 1           | 1           |
| L                      | WRAPPER, BLOWER               | 1170639  | 1           | 1           | 1           | 1           | 1           | 1           | 1           | 1           | 1           | 1           | 1           | 1           | -           | -           | -           | -           |
| L                      |                               | 1173898  | -           | -           | -           | -           | -           | -           | -           | -           | -           | -           | -           | -           | 1           | 1           | 1           | 1           |
| M                      | PLATE, BLOWER SIDE            | 1170640  | 1           | 1           | 1           | 1           | 1           | 1           | 1           | 1           | 1           | 1           | 1           | 1           | 1           | 1           | 1           | 1           |
| N                      | PLATE, BLOWER SIDE MOTOR SIDE | 1170641  | 1           | 1           | 1           | 1           | 1           | 1           | 1           | 1           | 1           | 1           | 1           | 1           | 1           | 1           | 1           | 1           |
| P                      | RING, INLET                   | 1170642  | 1           | 1           | 1           | 1           | 1           | 1           | 1           | 1           | 1           | 1           | 1           | 1           | 1           | 1           | 1           | 1           |
| Q                      | STRAP, CAPACITOR              | 1170643  | 1           | 1           | 1           | 1           | 1           | 1           | 1           | 1           | 1           | 1           | 1           | 1           | 1           | 1           | 1           | 1           |
| R                      | ARM & GROMMET ASSY            | 1173747  | 3           | 3           | 3           | 3           | 3           | 3           | 3           | 3           | 3           | 3           | 3           | 3           | 3           | 3           | 3           | 3           |
| S                      | BAND, MOTOR MOUNT             | 1171733  | 1           | 1           | 1           | 1           | 1           | 1           | 1           | 1           | 1           | 1           | 1           | 1           | 1           | 1           | 1           | 1           |
| T                      | GROMMET, MOTOR MOUNT          | 1171738  | 3           | 3           | 3           | 3           | 3           | 3           | 3           | 3           | 3           | 3           | 3           | 3           | 3           | 3           | 3           | 3           |
| U                      | SHIELD, CONDENSATE PAN        | 1170658  | 1           | 1           | 1           | 1           | 1           | 1           | 1           | 1           | 1           | 1           | 1           | 1           | 1           | 1           | 1           | 1           |
| V                      | PANEL, CONTROL                | 1170679  | -           | 1           | 1           | 1           | -           | 1           | 1           | 1           | -           | 1           | 1           | 1           | -           | 1           | 1           | 1           |
| W                      | BRACKET DISCONNECT MTG        | 1170661  | -           | 1           | 1           | 1           | -           | 1           | 1           | 1           | -           | 1           | 1           | 1           | -           | 1           | 1           | 1           |
| X                      | PANEL PROTECTIVE              | 1170662  | -           | 1           | 1           | 1           | -           | 1           | 1           | 1           | -           | 1           | 1           | 1           | -           | 1           | 1           | 1           |
| Y                      | BARRIER                       | 1170663  | -           | 1           | 1           | 1           | -           | 1           | 1           | 1           | -           | 1           | 1           | 1           | -           | 1           | 1           | 1           |
| <b>PARTS NOT SHOWN</b> |                               |          |             |             |             |             |             |             |             |             |             |             |             |             |             |             |             |             |
| )                      | EXTENSION COIL ASY            | 1175061  | 1           | 1           | 1           | 1           | -           | -           | -           | -           | -           | -           | -           | -           | -           | -           | -           | -           |
| )                      |                               | 1175062  | -           | -           | -           | -           | 1           | 1           | 1           | 1           | 1           | 1           | 1           | 1           | 1           | 1           | 1           | 1           |
| )                      | EXTENSION SUPPORT             | 1175064  | 1           | 1           | 1           | 1           | -           | -           | -           | -           | -           | -           | -           | -           | -           | -           | -           | -           |
| )                      |                               | 1175063  | -           | -           | -           | -           | 1           | 1           | 1           | 1           | 1           | 1           | 1           | 1           | -           | -           | -           | -           |
| )                      |                               | 1175065  | -           | -           | -           | -           | -           | -           | -           | -           | -           | -           | -           | -           | 1           | 1           | 1           | 1           |
| )                      | PAINT                         | 1171357  | 1           | 1           | 1           | 1           | 1           | 1           | 1           | 1           | 1           | 1           | 1           | 1           | 1           | 1           | 1           | 1           |
| )                      | STRAINER                      | 1171740  | 1           | 1           | 1           | 1           | 1           | 1           | 1           | 1           | 1           | 1           | 1           | 1           | 1           | 1           | 1           | 1           |
| )                      | HARNESS ASSY, COOLING CONTROL | 1171698  | 1           | 1           | 1           | 1           | 1           | 1           | 1           | 1           | 1           | 1           | 1           | 1           | 1           | 1           | 1           | 1           |

| WAHA PARTS LIST |                               |          |             |             |             |             |             |             |             |             |             |             |             |
|-----------------|-------------------------------|----------|-------------|-------------|-------------|-------------|-------------|-------------|-------------|-------------|-------------|-------------|-------------|
| KEY NO.         | DESCRIPTION                   | PART NO. | WAHA18054A1 | WAHA18074A1 | WAHA24054A1 | WAHA24074A1 | WAHA24114A1 | WAHA30054A1 | WAHA30074A1 | WAHA30114A1 | WAHA36054A1 | WAHA36074A1 | WAHA36114A1 |
| 01              | BLOWER ASY                    | 1179360  | 1           | 1           | -           | -           | -           | -           | -           | -           | -           | -           | -           |
| 01              |                               | 1179361  | -           | -           | 1           | 1           | 1           | -           | -           | -           | -           | -           | -           |
| 01              |                               | 1179362  | -           | -           | -           | -           | -           | 1           | 1           | 1           | -           | -           | -           |
| 01              |                               | 1179363  | -           | -           | -           | -           | -           | -           | -           | -           | 1           | 1           | 1           |
| 02              | MTR BLR 1/3 HP                | 1179355  | 1           | 1           | -           | -           | -           | -           | -           | -           | -           | -           | -           |
| 02              |                               | 1179356  | -           | -           | 1           | 1           | 1           | -           | -           | -           | -           | -           | -           |
| 02              |                               | 1179357  | -           | -           | -           | -           | -           | 1           | 1           | 1           | -           | -           | -           |
| 02              | MTR BLR 1/2 HP                | 1179358  | -           | -           | -           | -           | -           | -           | -           | -           | 1           | 1           | 1           |
| 04              | WHEEL DD10X6X1/2 CCW CV       | 1170652  | 1           | 1           | 1           | 1           | 1           | -           | -           | -           | -           | -           | -           |
| 04              | WHEEL DD10X7X1/2 CCW CV       | 1173847  | -           | -           | -           | -           | -           | 1           | 1           | 1           | 1           | 1           | 1           |
| 05              | COIL ASY EVAP                 | 1179345  | 1           | 1           | -           | -           | -           | -           | -           | -           | -           | -           | -           |
| 05              |                               | 1179346  | -           | -           | 1           | 1           | 1           | -           | -           | -           | -           | -           | -           |
| 05              |                               | 1179348  | -           | -           | -           | -           | -           | 1           | 1           | 1           | -           | -           | -           |
| 05              |                               | 1179347  | -           | -           | -           | -           | -           | -           | -           | -           | 1           | 1           | 1           |
| 06              | DISTRIBUTOR ASY               | 1172624  | 1           | 1           | -           | -           | -           | -           | -           | -           | -           | -           | -           |
| 06              |                               | 1171603  | -           | -           | 1           | 1           | 1           | -           | -           | -           | -           | -           | -           |
| 06              |                               | 1172984  | -           | -           | -           | -           | -           | 1           | 1           | 1           | -           | -           | -           |
| 06              |                               | 1171604  | -           | -           | -           | -           | -           | -           | -           | -           | 1           | 1           | 1           |
| 07              | VALVE TXV 2.0 BI-FLO R410     | 1179353  | 1           | 1           | 1           | 1           | 1           | -           | -           | -           | -           | -           | -           |
| 07              | VALVE TXV 3.0 BI-FLO R410     | 1179354  | -           | -           | -           | -           | -           | 1           | 1           | 1           | 1           | 1           | 1           |
| 09              | PAN CONDENSATE ASY            | 1170656  | 1           | 1           | 1           | 1           | 1           | 1           | 1           | 1           | 1           | 1           | 1           |
| 11              | ELEMENT ASSY 5 KW             | 1173900  | 1           | -           | 1           | -           | -           | 1           | -           | -           | 1           | -           | -           |
| 11              | ELEMENT ASSY 3.75 KW          | 1173901  | -           | 2           | -           | 2           | -           | -           | 2           | -           | -           | 2           | -           |
| 11              | ELEMENT ASSY 5.5 KW           | 1173902  | -           | -           | -           | -           | 2           | -           | -           | 2           | -           | -           | 2           |
| 12              | TERMINAL BLOCK                | 1179352  | 1           | 1           | 1           | 1           | 1           | 1           | 1           | 1           | 1           | 1           | 1           |
| 13              | BOARD CIRCUIT RECTIFIER CNTRL | 1171780  | 1           | 1           | 1           | 1           | 1           | 1           | 1           | 1           | 1           | 1           | 1           |
| 14              | SWITCH LIMIT DISC O145 C090 S | 1170673  | 1           | 2           | 1           | 2           | 2           | 1           | 2           | 2           | 1           | 2           | 2           |
| 15              | RELAY 22V DPST T92S7D22-22 S  | 1170674  | 1           | 1           | 1           | 1           | 1           | 1           | 1           | 1           | 1           | 1           | 1           |
| 16              | DISCONNECT NON FUSED 60A 240V | 1173837  | 1           | 1           | 1           | 1           | 1           | 1           | 1           | 1           | 1           | 1           | 1           |
| 17              | TRANS 208/230>24 40VA         | 1173844  | 1           | 1           | 1           | 1           | 1           | 1           | 1           | 1           | 1           | 1           | 1           |
| 18              | LUG GROUND                    | 1170677  | 1           | 1           | 1           | 1           | 1           | 1           | 1           | 1           | 1           | 1           | 1           |
| A               | TOP ASY                       | 1179365  | 1           | 1           | 1           | 1           | 1           | -           | -           | -           | -           | -           | -           |
| A               |                               | 1179366  | -           | -           | -           | -           | -           | 1           | 1           | 1           | 1           | 1           | 1           |
| B               | BRACKET FILTER                | 1170628  | 1           | 1           | 1           | 1           | 1           | -           | -           | -           | -           | -           | -           |
| B               |                               | 1173894  | -           | -           | -           | -           | -           | 1           | 1           | 1           | 1           | 1           | 1           |
| C               | SUPPORT COIL                  | 1170629  | 2           | 2           | 2           | 2           | 2           | -           | -           | -           | -           | -           | -           |
| C               |                               | 1173893  | -           | -           | -           | -           | -           | 2           | 1           | 1           | 1           | 1           | 1           |
| D               | BASE FAN COIL                 | 1170630  | 1           | 1           | 1           | 1           | 1           | -           | -           | -           | -           | -           | -           |
| D               |                               | 1173882  | -           | -           | -           | -           | -           | 1           | 1           | 1           | 1           | 1           | 1           |
| E               | PLATE PATCH                   | 1173883  | 1           | 1           | 1           | 1           | 1           | 1           | 1           | 1           | 1           | 1           | 1           |

- continued on next page -

| WAHA PARTS LIST        |                               |          |             |             |             |             |             |             |             |             |             |             |             |
|------------------------|-------------------------------|----------|-------------|-------------|-------------|-------------|-------------|-------------|-------------|-------------|-------------|-------------|-------------|
| KEY NO.                | DESCRIPTION                   | PART NO. | WAHA18054A1 | WAHA18074A1 | WAHA24054A1 | WAHA24074A1 | WAHA24114A1 | WAHA30054A1 | WAHA30074A1 | WAHA30114A1 | WAHA36054A1 | WAHA36074A1 | WAHA36114A1 |
| F                      | PANEL ASY BLOWER DOOR         | 1179367  | 1           | 1           | 1           | 1           | 1           | -           | -           | -           | -           | -           | -           |
| F                      |                               | 1179368  | -           | -           | -           | -           | -           | 1           | 1           | 1           | 1           | 1           | 1           |
| G                      | FILTER 16.5 X 19.625          | 1173885  | 1           | 1           | 1           | 1           | 1           | -           | -           | -           | -           | -           | -           |
| G                      | FILTER 19.625 X 19.625        | 1173886  | -           | -           | -           | -           | -           | 1           | 1           | 1           | 1           | 1           | 1           |
| H                      | SCREW                         | 1170636  | 3           | 3           | 3           | 3           | 3           | 3           | 3           | 3           | 3           | 3           | 3           |
| J                      | PANEL BLOWER CUTOFF           | 1170637  | 1           | 1           | 1           | 1           | 1           | -           | -           | -           | -           | -           | -           |
| K                      | HOUSING BLOWER                | 1170638  | 1           | 1           | 1           | 1           | 1           | -           | -           | -           | -           | -           | -           |
| K                      | HOUSING ASSY DD10-7           | 1173896  | -           | -           | -           | -           | -           | 1           | 1           | 1           | 1           | 1           | 1           |
| L                      | WRAPPER BLOWER                | 1170639  | 1           | 1           | 1           | 1           | 1           | -           | -           | -           | -           | -           | -           |
| L                      |                               | 1173898  | -           | -           | -           | -           | -           | 1           | 1           | 1           | 1           | 1           | 1           |
| M                      | PLATE BLOWER SIDE             | 1170640  | 1           | 1           | 1           | 1           | 1           | 1           | 1           | 1           | 1           | 1           | 1           |
| N                      | PLATE BLOWER SIDE MOTOR SIDE  | 1170641  | 1           | 1           | 1           | 1           | 1           | 1           | 1           | 1           | 1           | 1           | 1           |
| P                      | RING INLET                    | 1170642  | 1           | 1           | 1           | 1           | 1           | 1           | 1           | 1           | 1           | 1           | 1           |
| R                      | ARM & GROM ASSY               | 1173747  | 3           | 3           | 3           | 3           | 3           | 3           | 3           | 3           | 3           | 3           | 3           |
| S                      | BAND MOTOR MOUNT              | 1171733  | 1           | 1           | 1           | 1           | 1           | 1           | 1           | 1           | 1           | 1           | 1           |
| T                      | GROMMET MOTOR MOUNT           | 1171738  | 3           | 3           | 3           | 3           | 3           | 3           | 3           | 3           | 3           | 3           | 3           |
| V                      | PANEL CONTROL                 | 1170659  | 1           | -           | 1           | -           | -           | 1           | -           | -           | 1           | -           | -           |
| V                      |                               | 1170660  | -           | 1           | -           | 1           | 1           | -           | 1           | 1           | -           | 1           | 1           |
| W                      | BRACKET DISC MTG              | 1170661  | 1           | 1           | 1           | 1           | 1           | 1           | 1           | 1           | 1           | 1           | 1           |
| X                      | PANEL PROTECTIVE              | 1170662  | 1           | 1           | 1           | 1           | 1           | 1           | 1           | 1           | 1           | 1           | 1           |
| Y                      | BARRIER                       | 1170663  | 1           | 1           | 1           | 1           | 1           | 1           | 1           | 1           | 1           | 1           | 1           |
| <b>PARTS NOT SHOWN</b> |                               |          |             |             |             |             |             |             |             |             |             |             |             |
| )                      | HARNESS ASY                   | 1179349  | 1           | 1           | 1           | 1           | 1           | 1           | 1           | 1           | 1           | 1           | 1           |
| )                      |                               | 1179350  | 1           | 1           | 1           | 1           | 1           | 1           | 1           | 1           | 1           | 1           | 1           |
| )                      |                               | 1179351  | 1           | 1           | 1           | 1           | 1           | 1           | 1           | 1           | 1           | 1           | 1           |
| )                      | STRAINER                      | 1171740  | 1           | 1           | 1           | 1           | 1           | 1           | 1           | 1           | 1           | 1           | 1           |
| )                      | PAINT TOUCH-UP TAUPE METALLIC | 1179019  | 1           | 1           | 1           | 1           | 1           | 1           | 1           | 1           | 1           | 1           | 1           |
| )                      | EXTENSION ASSY COIL           | 1175061  | 1           | 1           | -           | -           | -           | 1           | 1           | 1           | -           | -           | -           |
| )                      | SHIELD COIL                   | 1175062  | -           | -           | 1           | 1           | 1           | -           | -           | -           | 1           | 1           | 1           |
| )                      | EXTENSION SUPPORT             | 1175064  | 1           | 1           | -           | -           | -           | -           | -           | -           | -           | -           | -           |
| )                      |                               | 1175063  | -           | -           | 1           | 1           | 1           | -           | -           | -           | -           | -           | -           |
| )                      |                               | 1179344  | -           | -           | -           | -           | -           | 1           | 1           | 1           | -           | -           | -           |
| )                      |                               | 1175065  | -           | -           | -           | -           | -           | -           | -           | -           | 1           | 1           | 1           |