

Vent Drain Kit

(Part # 1013932)

SUBJECT: Vent Drain Modifications for *9MPD, *9MPT, *9MPV

PRODUCT: All *9MPD, *9MPT, *9MPV Furnaces. Date code L0100 – 0151xxx

REASON: Water may accumulate in the draft inducer assembly under certain operating conditions when the furnace is installed in the upflow or horizontal left configurations

INSTRUCTIONS: This Bulletin authorizes installation deviations from those as shown in the Installation Instructions packaged with the furnace. When the subject furnaces are installed as upflow or horizontal left applications, the vent drain coupling is more effective when installed on the discharge of the inducer assembly. If vent drainage problems are encountered, it is permissible to relocate the vent drain coupling as detailed below. Vent Drain Kit (Part # 1013932) contains all the necessary components to make the modification.

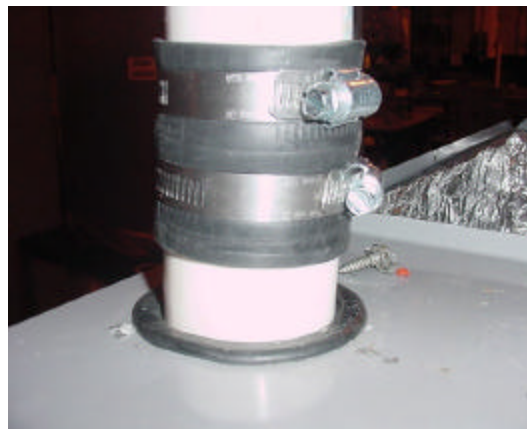
UPFLOW APPLICATIONS - with vent routed through top panel of furnace:

1. Remove vent drain coupling, black plastic elbow, and rubber coupling from the inducer assembly. Relocate vent drain coupling to the inducer assembly discharge (*Picture 1*). Make sure that the airflow arrow on the vent drain coupling is pointing away from the inducer assembly. Also make sure that the drain outlet of the vent drain coupling is rotated downward 20 – 30 degrees from horizontal plane. Tighten clamp. Route the drain hose from the vent drain coupling, (bottom port) to the trap fitting. Note: For furnaces manufactured before date code **L0146** we also recommend that the condensate trap assembly (part #1013676) be replaced during this vent drain coupling modification. Replace the original condensate trap with the new design trap included in the Vent Drain Kit.
2. Install 2" PVC Street elbow, supplied with kit, into the vent drain coupling, and tighten clamp. (*Picture 1*)
3. Install the section of 2" PVC pipe (approx. 11") that will extend from the Street elbow through the top panel of the furnace. (*Picture 2*) After checking for proper fit, glue the pipe into the Street elbow. Note: The Street elbow will slightly misalign the section of PVC inside the furnace casing.
4. Use the rubber connector previously removed from the inducer assembly, or use the new coupling from the kit to connect to vent pipe. The rubber

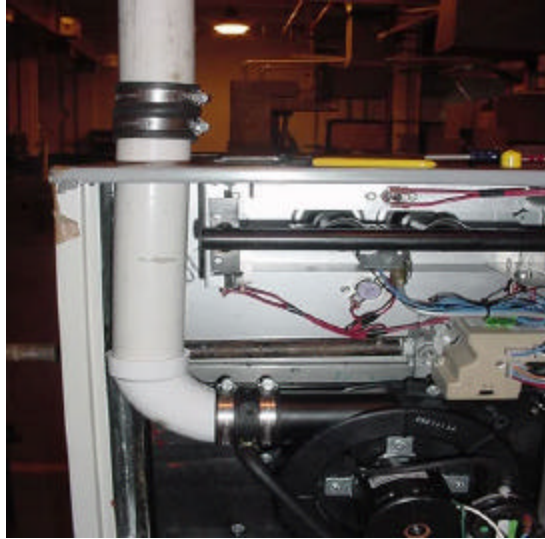
coupling compensates for the slight misalignment of the PVC section in the furnace. (*Picture 2*). The completed assembly should appear as in ***Picture 3***.



PICTURE 1



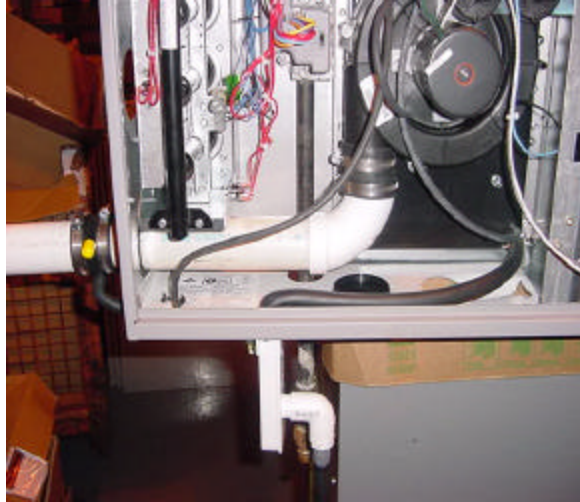
PICTURE 2



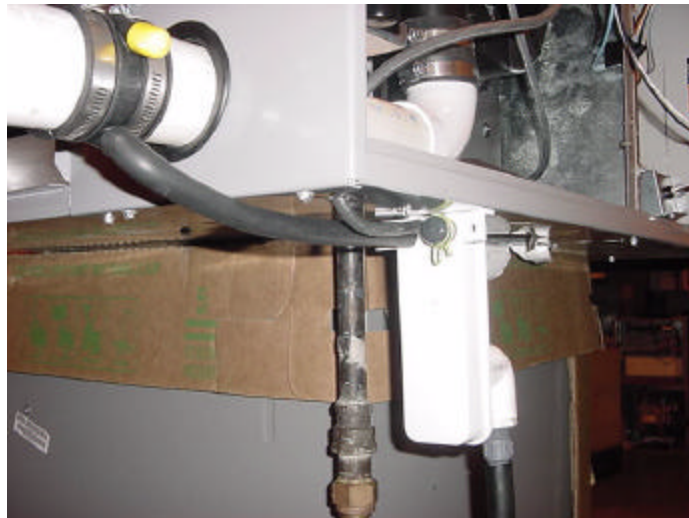
PICTURE 3

HORIZONTAL LEFT APPLICATIONS

1. Disassemble the vent coupling from the inducer discharge. Use the 90 degree 2" street elbow, and secure it to the inducer with the discharge coupling (looks like a piece of black inner tube) with clamps. **See Picture 1A**
2. Glue together the street elbow and 11 inch long piece of PVC pipe using PVC cement.
3. Use the trap supplied in the kit, and reverse the trap orientation from what is shown in the Installation Instructions so that the large diameter hole going to the transition box now faces the front of the unit. **See Picture 2A**
4. Install the vent coupling externally as shown in **Picture 2A**. Rotate the drain port down 20 to 30 degrees. Connect the 90 degree bend of the 5/8 inch OD hose to the coupling, cut the hose to length and connect to the trap as shown. Install the large diameter hose (3/4"OD) from the transition box to the top stub of the trap inside the unit (**Picture 1A**). Secure hoses with clamps.
5. Use the 26-inch length hose (same diameter hose as used on pressure switches), and connect it to the small center port of the trap. Next, connect the opposite end of the hose to the unused pressure switch tap at the top of the transition box. This may require drilling a 5/16 inch diameter hole through the cabinet in an appropriate location to route the hose.



PICTURE 1A



PICTURE 2A