

# INSTALLATION INSTRUCTIONS

## Accessory Wall Mounting Kit

### For R-410A Horizontal AC & HP

### NASA00101WM & NASA00201WM


**NOTE:** Read and become familiar with these instructions before beginning installation.

#### SAFETY CONSIDERATIONS

Improper installation, adjustment, alteration, service, maintenance, or use can cause explosion, fire, electrical shock, or other conditions which may cause death, personal injury, or property damage. Consult a qualified installer, service agency, or your distributor or branch for information or assistance. The qualified installer or agency must use factory-authorized kits or accessories when modifying this product. Refer to the individual instructions packaged with the kits or accessories when installing.

Follow all safety codes. Wear safety glasses, protective clothing, and work gloves. Have a fire extinguisher available. Read these instructions thoroughly and follow all warnings or cautions included in literature and attached to the unit. Consult local building codes, the current editions of the National Electrical Code (NEC) NFPA 70.

In Canada refer to the current editions of the Canadian Electrical Code CSA C22.1 Recognize safety information.

This is the safety-alert symbol . When you see this symbol on the unit and in instructions or manuals, be alert to the potential for personal injury. Understand the signal words DANGER, WARNING, and CAUTION. These words are used with the safety-alert symbol. DANGER identifies the most serious hazards which will result in severe personal injury or death. WARNING signifies hazards which could result in personal injury or death. CAUTION is used to identify unsafe practices which may result in minor personal injury or product and property damage. NOTE is used to highlight suggestions which will result in enhanced installation, reliability, or operation.

## WARNING

### ELECTRICAL SHOCK HAZARD

Failure to follow this warning could result in personal injury or death.

Before beginning any modification or installation of this kit, be sure the main electrical disconnect is in the OFF position. Ensure power is disconnected to the fan coil unit. On some systems both the fan coil and the outdoor unit may be on the same disconnect. Tag the disconnect switch with a suitable warning label. There may be more than one disconnect.

#### GENERAL

These instructions cover the installation of the accessory wall mounting kit. The kit is provided for mounting cooling only, multi-split, and heat pump units to a wall due to space limitations. Refer to Table 1 for kit contents and usage.

Table 1		Kit Contents and Usage
MOUNTING KIT PART NUMBER	UNIT SIZE	KIT CONTENTS*
NASA00101WM	18, 24	2 – Long Bracket Section 2 – Horizontal Bracket Section 2 – Angled Bracket Section 6 – Wall Lag Bolts 6 – Lag Bolt Washers
NASA00201WM	30, 36 48, 60	6 – Wall Lag Bolt Shields (Anchors) 4 – Mounting Feet Bolts – 1 in.(25.4mm) 10 – Bracket Assy. Bolts – 3/4 in.(12.7mm) 14 – Locknuts 14 – Star Washers 14 – Flat Washers

\* The contents for both kits are the same; however, the items are different sizes for specific applications.

#### INSTALLATION

1. Unpack accessory from carton. Check to be sure contents are not damaged or missing. See Table 1.
2. Select mounting location on the wall. The location must allow for use of wall studs for mounting security. Check local building codes and building construction to ensure that there is adequate wall strength to support the mounted unit. The location must also allow for condensate drainage from the unit. Be sure this drainage does not cause a problem for the area beneath the unit.

**IMPORTANT:** Ensure that the unit will be mounted at least 6 in. (152.4mm) from the wall for proper airflow. Also ensure that there will be at least 6 in. (152.4mm) of airflow clearance on the coil end and 18 in. (457.2mm) on the compressor end for service access.

**IMPORTANT:** Do not drill new holes in the bracket assembly in order to move the unit closer to the wall.

3. Use the enclosed long bracket sections as a template for marking the mounting kit location on the wall. Both long bracket sections must line up with the middle and coil end mounting feet of the unit. See Figure 1.
4. Drill six (6) mounting holes in marked-off locations on the wall. For wood wall mounting, drill 5/16 in. (7.9mm) diameter holes. For masonry wall mounting, drill 5/8-in. (15.9mm) diameter holes and insert 3/8 in. (9.5mm) steel shields (anchors).
5. Assemble the bracket sections as shown in Figure 2, using bracket assembly bolts, lockwashers and bracket assembly locknuts. Do not tighten the bracket assembly bolts until the assembled kit is mounted on the wall. Mount the bracket assembly to the wall as shown in Figure 2, using the six (6) wall lag bolts and washers provided. Once mounted, tighten the bracket assembly bolts securely at all six mounting locations.
6. Check that all bracket assembly sections are secure.



# CAUTION

## EQUIPMENT DAMAGE HAZARD

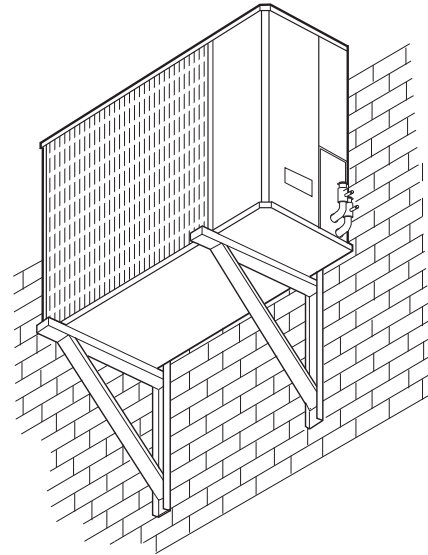
Failure to follow this caution may result in equipment and/or property damage.

To avoid damage to the wall or unit, check to be sure that all accessory parts are fastened tightly before mounting the unit on the wall brackets.

7. Mount the unit on the wall brackets using the 1 in. (25.4mm) mounting feet bolts and mounting feet locknuts provided. Tighten with the mounting feet locknuts. Use two (2) bolts on the coil end of the unit, and two (2) bolts beneath the compressor section. See Figure 2.

Figure 1

Typical Installation

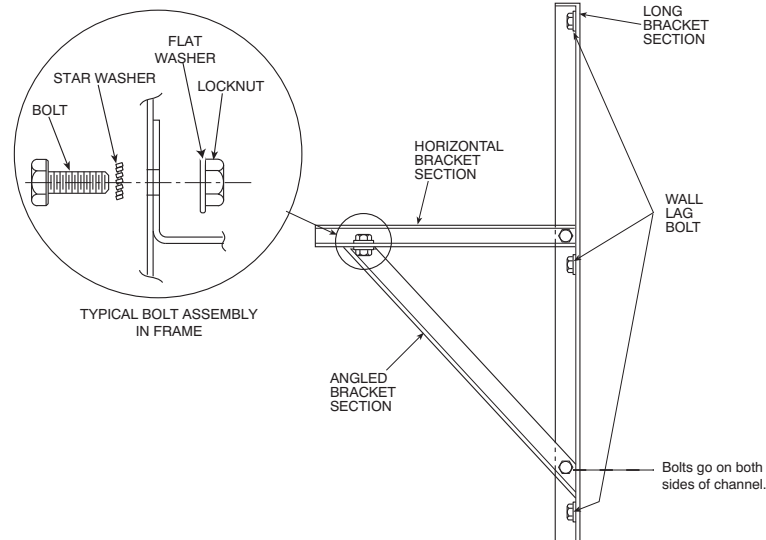


D06006

NOTE: Unit must be at least 6 in. (152.4mm) from wall.

Figure 2

Assembled Mounting Kit (One Section)



A07620